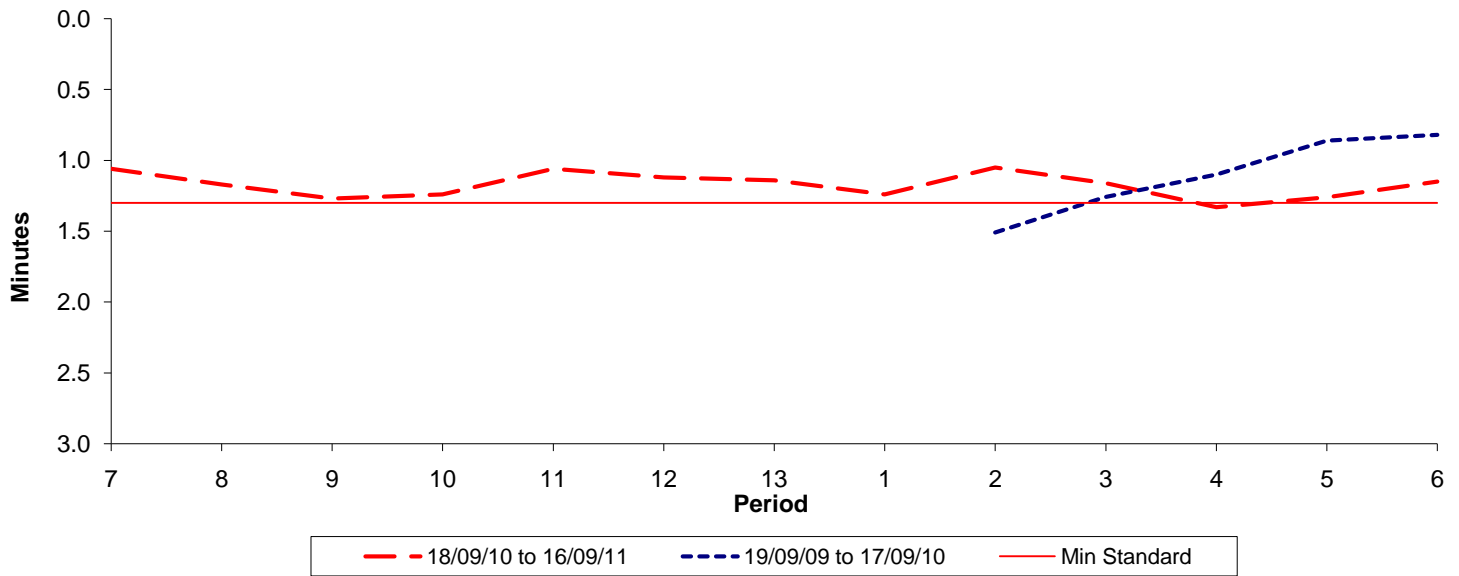




Reliability Performance (High Frequency)

Excess Waiting Time (minutes)

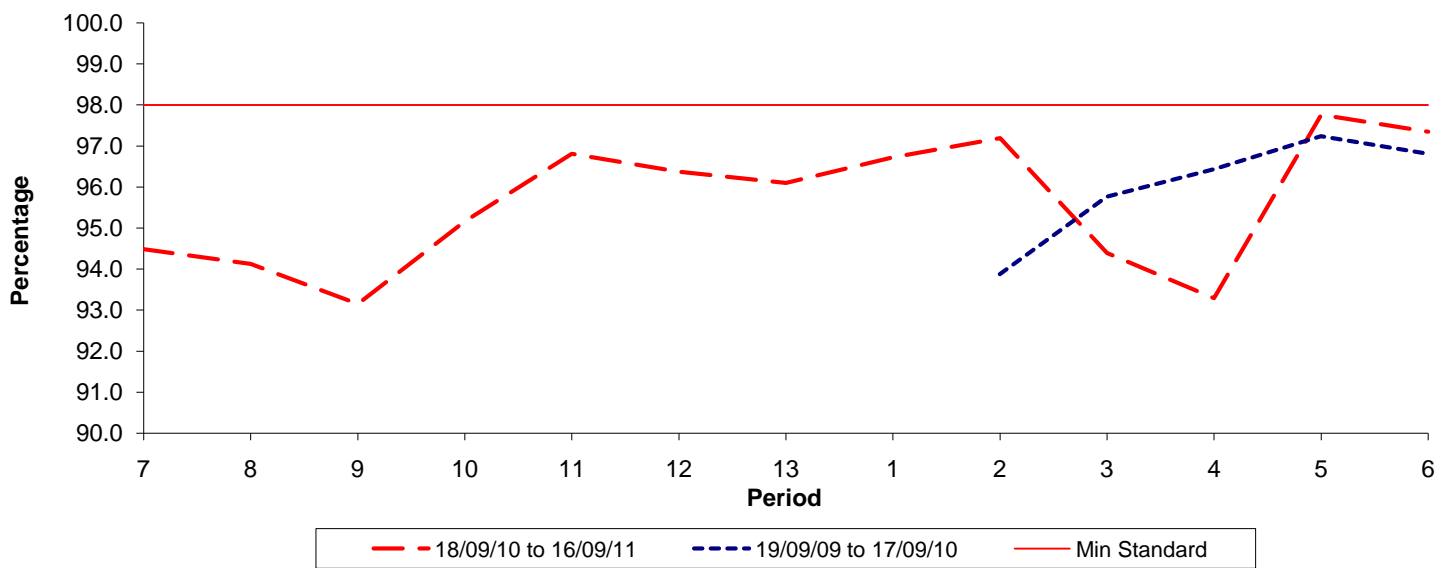


Date Range / Period	7	8	9	10	11	12	13	1	2	3	4	5	6
18/09/10 to 16/09/11	1.06	1.17	1.27	1.24	1.06	1.12	1.14	1.24	1.05	1.16	1.33	1.26	1.15
19/09/09 to 17/09/10									1.51	1.26	1.10	0.86	0.82
Min Standard	1.30	1.30	1.30	1.30	1.30	1.30	1.30	1.30	1.30	1.30	1.30	1.30	1.30

Excess Waiting Time figures are based on 12 weeks data

Kilometre Performance

% Kilometres Operated



Date Range / Period	7	8	9	10	11	12	13	1	2	3	4	5	6
18/09/10 to 16/09/11	94.48	94.13	93.15	95.16	96.81	96.37	96.10	96.72	97.19	94.39	93.29	97.76	97.35
19/09/09 to 17/09/10									93.87	95.77	96.44	97.24	96.82
Min Standard	98.00	98.00	98.00	98.00	98.00	98.00	98.00	98.00	98.00	98.00	98.00	98.00	98.00

Kilometre figures are based on 4 weeks data