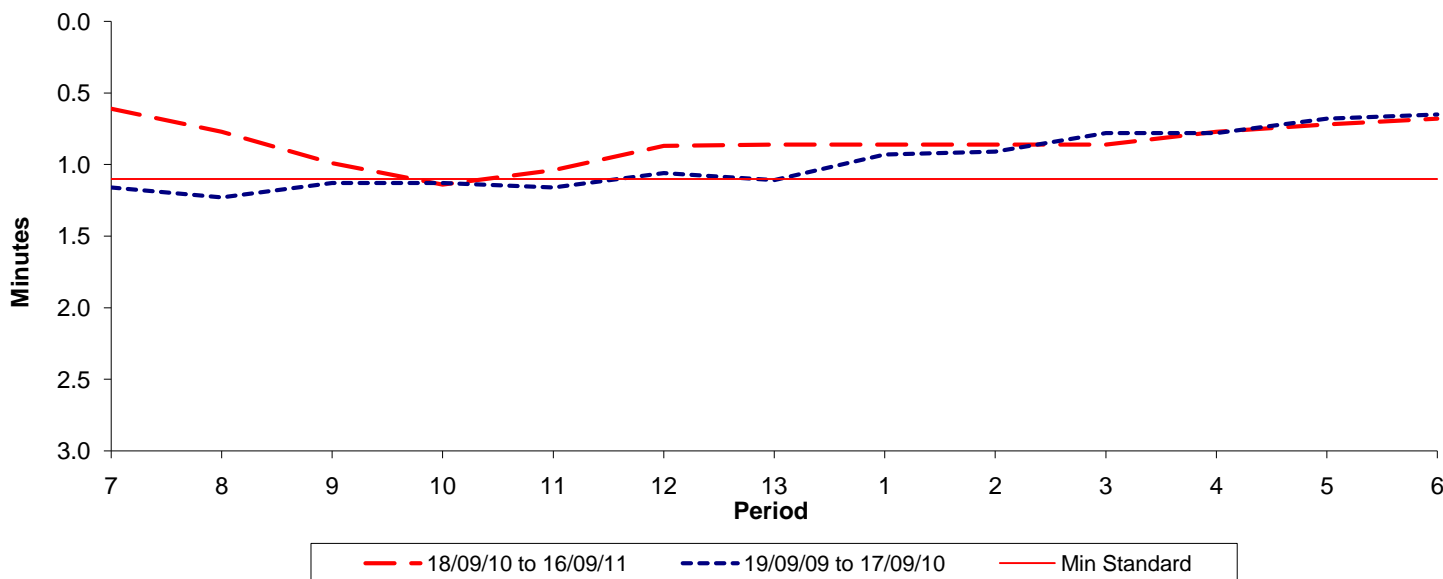




Reliability Performance (High Frequency)

Excess Waiting Time (minutes)

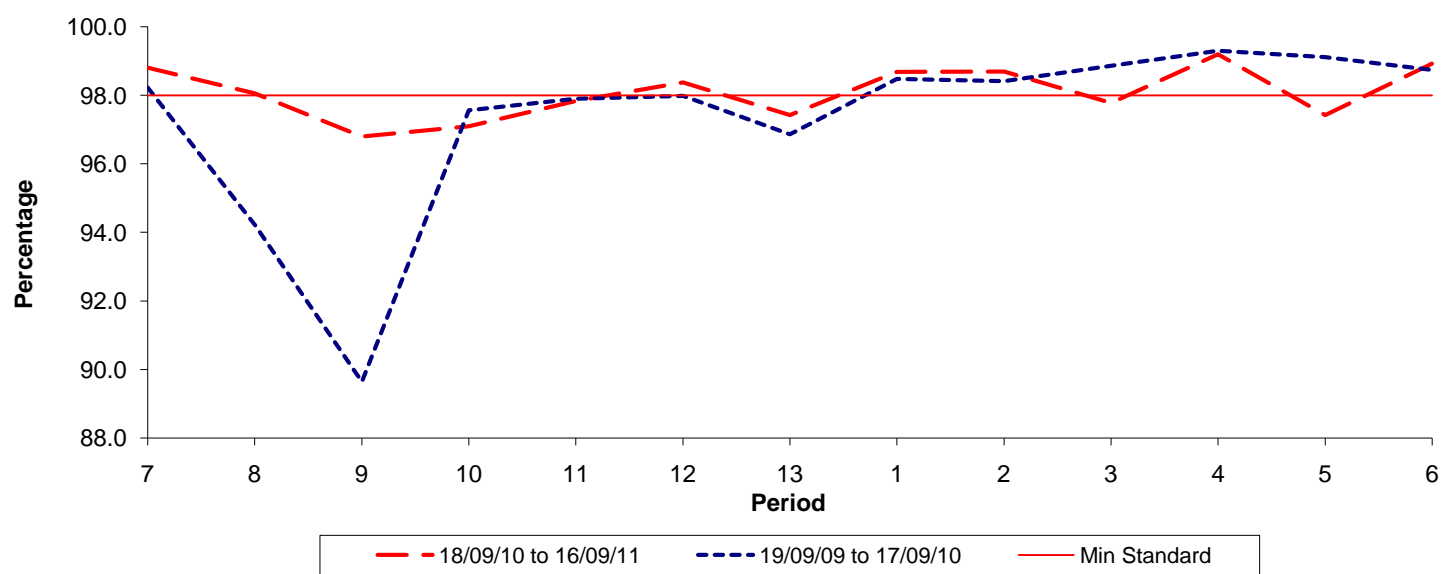


Date Range / Period	7	8	9	10	11	12	13	1	2	3	4	5	6
18/09/10 to 16/09/11	0.61	0.77	0.99	1.14	1.04	0.87	0.86	0.86	0.86	0.86	0.77	0.72	0.68
19/09/09 to 17/09/10	1.16	1.23	1.13	1.13	1.16	1.06	1.11	0.93	0.91	0.78	0.78	0.68	0.65
Min Standard	1.10	1.10	1.10	1.10	1.10	1.10	1.10	1.10	1.10	1.10	1.10	1.10	1.10

Excess Waiting Time figures are based on 12 weeks data

Kilometre Performance

% Kilometres Operated



Date Range / Period	7	8	9	10	11	12	13	1	2	3	4	5	6
18/09/10 to 16/09/11	98.81	98.06	96.80	97.10	97.84	98.38	97.43	98.69	98.70	97.78	99.20	97.43	98.93
19/09/09 to 17/09/10	98.23	94.23	89.64	97.56	97.90	97.98	96.86	98.48	98.41	98.86	99.30	99.11	98.74
Min Standard	98.00	98.00	98.00	98.00	98.00	98.00	98.00	98.00	98.00	98.00	98.00	98.00	98.00

Kilometre figures are based on 4 weeks data