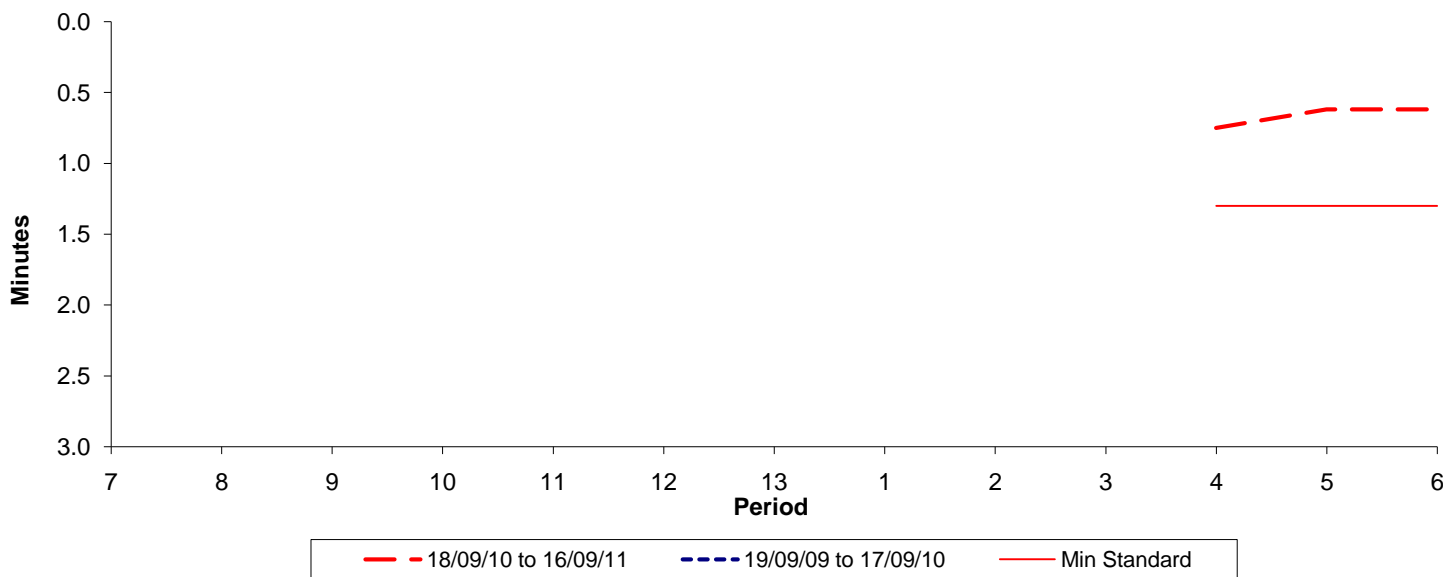




**Reliability Performance ( High Frequency )**

**Excess Waiting Time (minutes)**

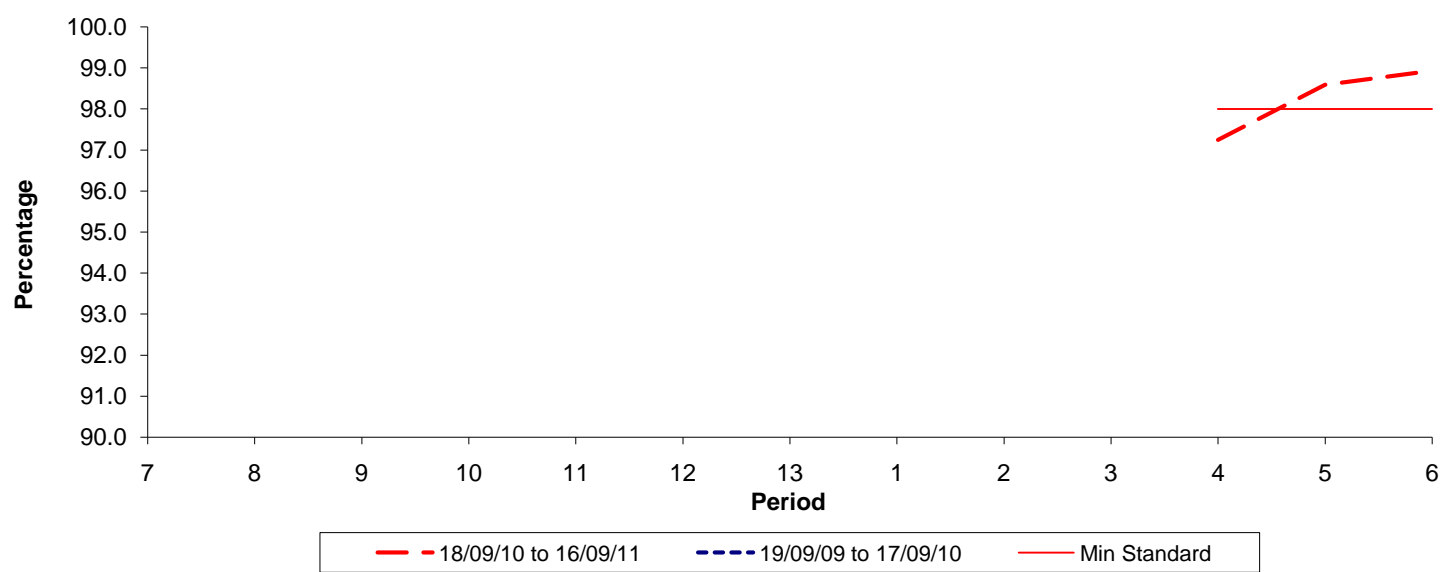


Date Range / Period	7	8	9	10	11	12	13	1	2	3	4	5	6
18/09/10 to 16/09/11											0.75	0.62	0.62
19/09/09 to 17/09/10											1.30	1.30	1.30
Min Standard											1.30	1.30	1.30

Excess Waiting Time figures are based on 12 weeks data

**Kilometre Performance**

**% Kilometres Operated**



Date Range / Period	7	8	9	10	11	12	13	1	2	3	4	5	6
18/09/10 to 16/09/11											97.25	98.59	98.93
19/09/09 to 17/09/10											98.00	98.00	98.00
Min Standard											98.00	98.00	98.00

Kilometre figures are based on 4 weeks data