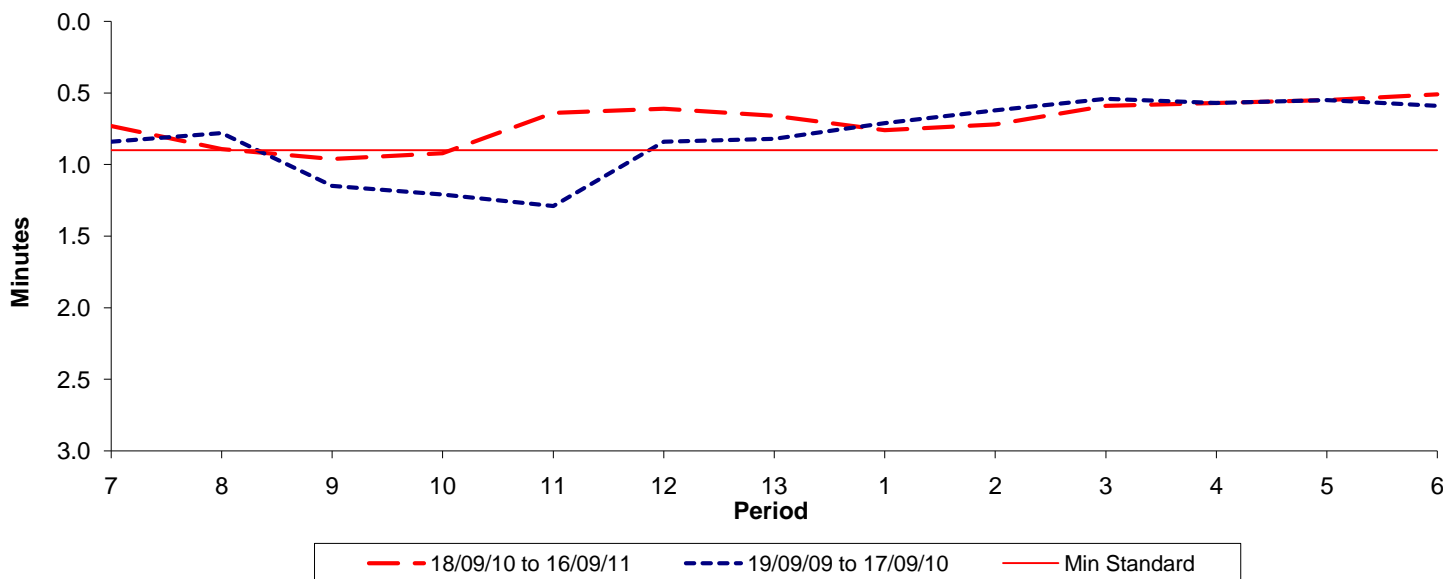




Reliability Performance (High Frequency)

Excess Waiting Time (minutes)

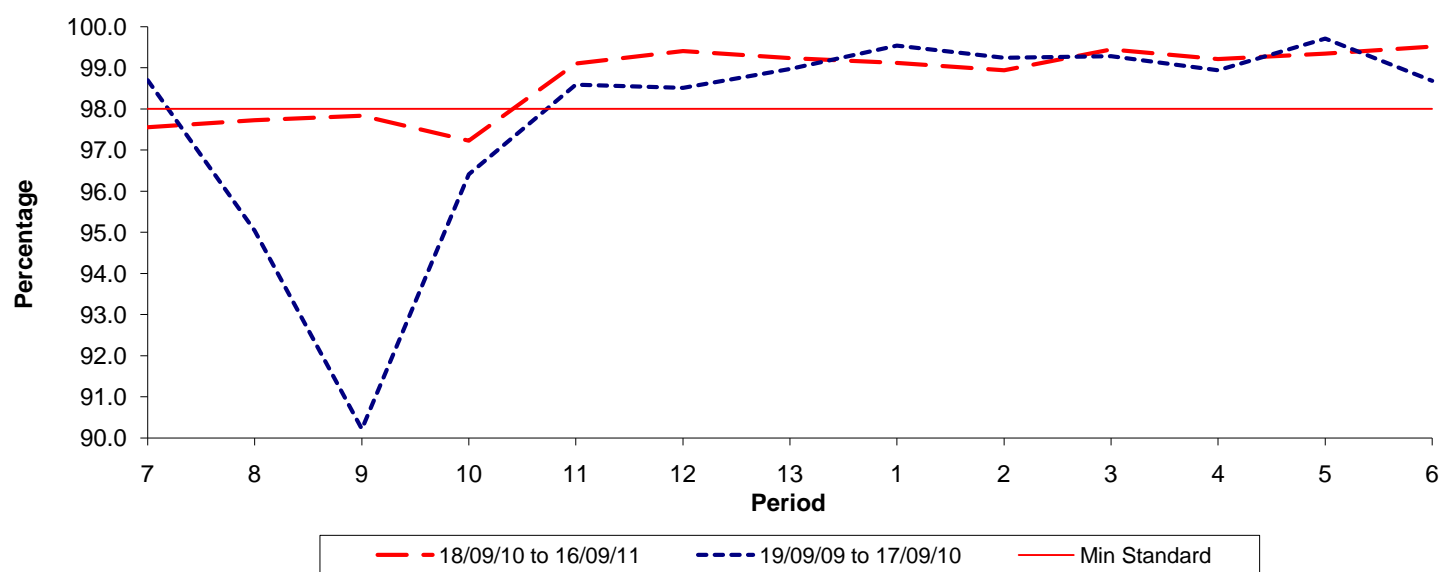


Date Range / Period	7	8	9	10	11	12	13	1	2	3	4	5	6
18/09/10 to 16/09/11	0.73	0.89	0.96	0.92	0.64	0.61	0.66	0.76	0.72	0.59	0.57	0.55	0.51
19/09/09 to 17/09/10	0.84	0.78	1.15	1.21	1.29	0.84	0.82	0.71	0.62	0.54	0.57	0.55	0.59
Min Standard	0.90	0.90	0.90	0.90	0.90	0.90	0.90	0.90	0.90	0.90	0.90	0.90	0.90

Excess Waiting Time figures are based on 12 weeks data

Kilometre Performance

% Kilometres Operated



Date Range / Period	7	8	9	10	11	12	13	1	2	3	4	5	6
18/09/10 to 16/09/11	97.56	97.73	97.84	97.23	99.11	99.41	99.24	99.12	98.94	99.45	99.22	99.35	99.52
19/09/09 to 17/09/10	98.70	95.04	90.22	96.41	98.59	98.51	98.97	99.54	99.24	99.28	98.94	99.71	98.68
Min Standard	98.00	98.00	98.00	98.00	98.00	98.00	98.00	98.00	98.00	98.00	98.00	98.00	98.00

Kilometre figures are based on 4 weeks data