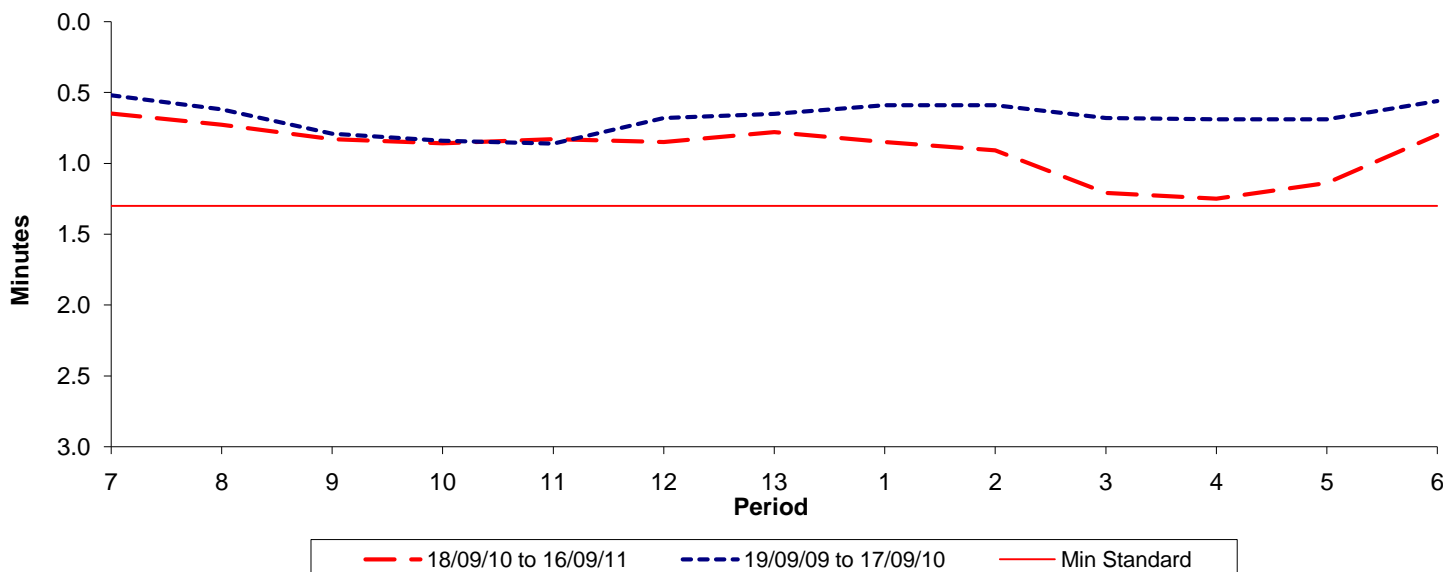




**Reliability Performance ( High Frequency )**

**Excess Waiting Time (minutes)**

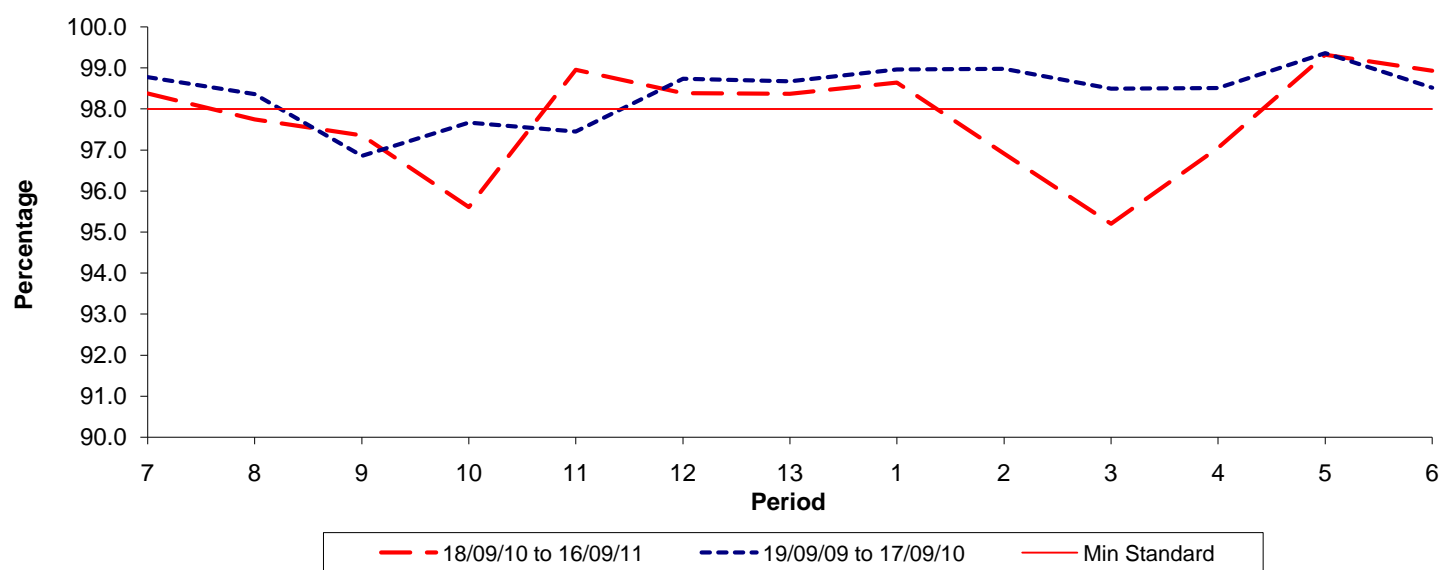


Date Range / Period	7	8	9	10	11	12	13	1	2	3	4	5	6
18/09/10 to 16/09/11	0.65	0.73	0.83	0.86	0.83	0.85	0.78	0.85	0.91	1.21	1.25	1.14	0.80
19/09/09 to 17/09/10	0.52	0.62	0.79	0.84	0.86	0.68	0.65	0.59	0.59	0.68	0.69	0.69	0.56
Min Standard	1.30	1.30	1.30	1.30	1.30	1.30	1.30	1.30	1.30	1.30	1.30	1.30	1.30

Excess Waiting Time figures are based on 12 weeks data

**Kilometre Performance**

**% Kilometres Operated**



Date Range / Period	7	8	9	10	11	12	13	1	2	3	4	5	6
18/09/10 to 16/09/11	98.37	97.74	97.35	95.61	98.95	98.38	98.37	98.64	96.91	95.20	97.05	99.32	98.93
19/09/09 to 17/09/10	98.78	98.36	96.86	97.67	97.45	98.74	98.68	98.96	98.98	98.50	98.51	99.36	98.52
Min Standard	98.00	98.00	98.00	98.00	98.00	98.00	98.00	98.00	98.00	98.00	98.00	98.00	98.00

Kilometre figures are based on 4 weeks data