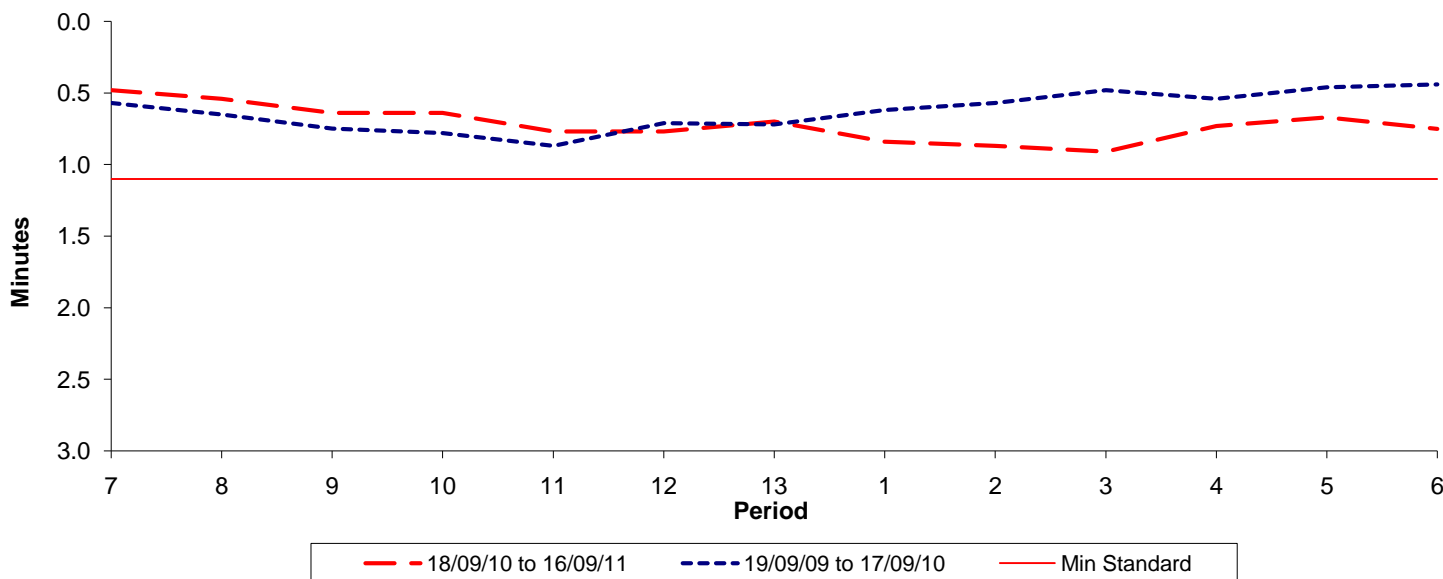




Reliability Performance (High Frequency)

Excess Waiting Time (minutes)

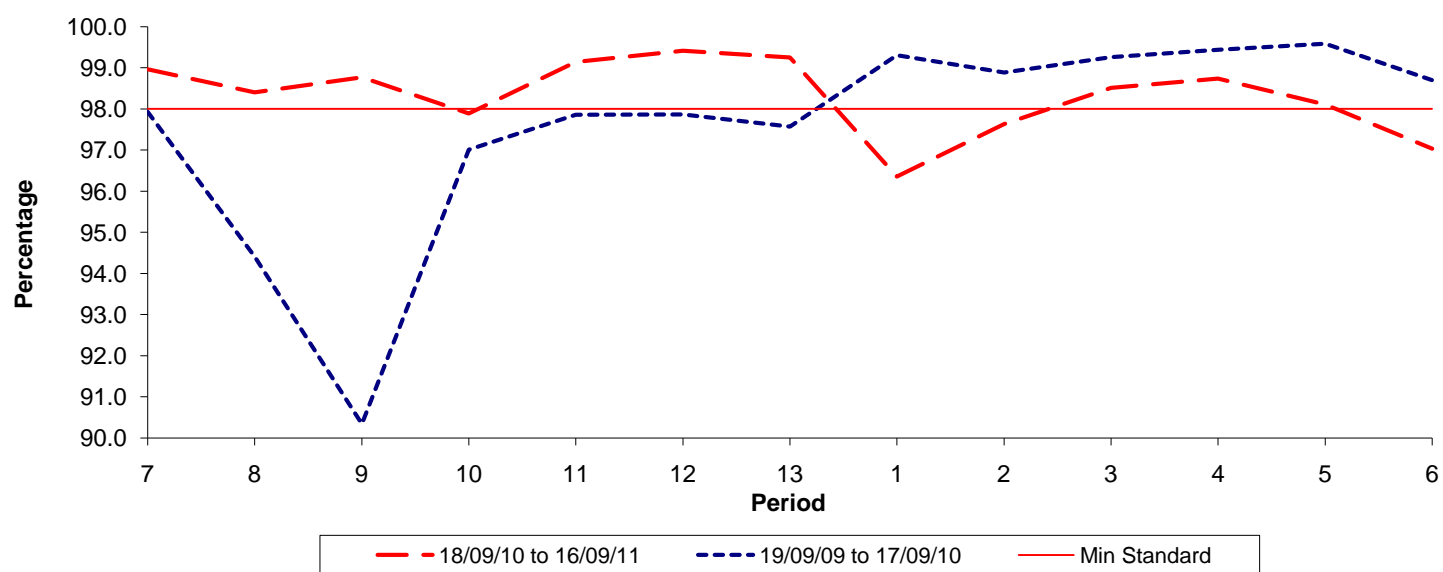


Date Range / Period	7	8	9	10	11	12	13	1	2	3	4	5	6
18/09/10 to 16/09/11	0.48	0.54	0.64	0.64	0.77	0.77	0.70	0.84	0.87	0.91	0.73	0.67	0.75
19/09/09 to 17/09/10	0.57	0.65	0.75	0.78	0.87	0.71	0.72	0.62	0.57	0.48	0.54	0.46	0.44
Min Standard	1.10	1.10	1.10	1.10	1.10	1.10	1.10	1.10	1.10	1.10	1.10	1.10	1.10

Excess Waiting Time figures are based on 12 weeks data

Kilometre Performance

% Kilometres Operated



Date Range / Period	7	8	9	10	11	12	13	1	2	3	4	5	6
18/09/10 to 16/09/11	98.97	98.41	98.77	97.89	99.15	99.42	99.26	96.36	97.64	98.52	98.74	98.11	97.04
19/09/09 to 17/09/10	97.93	94.41	90.34	97.01	97.86	97.87	97.57	99.31	98.89	99.26	99.44	99.59	98.70
Min Standard	98.00	98.00	98.00	98.00	98.00	98.00	98.00	98.00	98.00	98.00	98.00	98.00	98.00

Kilometre figures are based on 4 weeks data