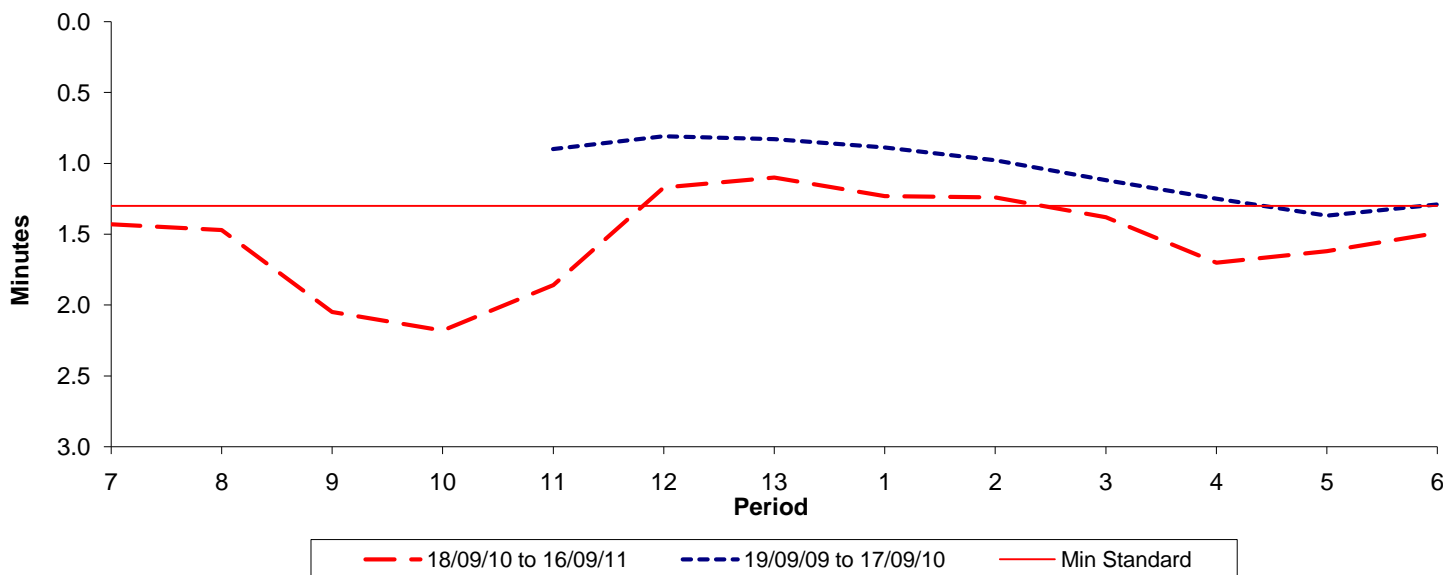




Reliability Performance (High Frequency)

Excess Waiting Time (minutes)

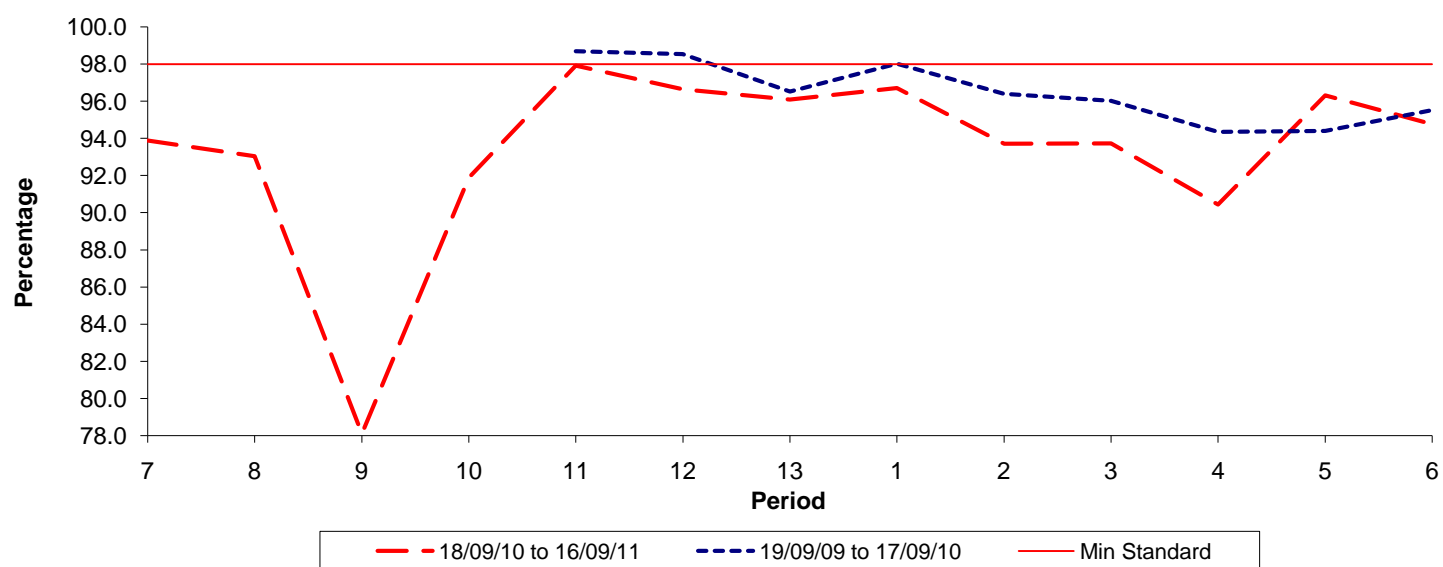


Date Range / Period	7	8	9	10	11	12	13	1	2	3	4	5	6
18/09/10 to 16/09/11	1.43	1.47	2.05	2.18	1.86	1.17	1.10	1.23	1.24	1.38	1.70	1.62	1.49
19/09/09 to 17/09/10					0.90	0.81	0.83	0.89	0.98	1.12	1.25	1.37	1.29
Min Standard	1.30	1.30	1.30	1.30	1.30	1.30	1.30	1.30	1.30	1.30	1.30	1.30	1.30

Excess Waiting Time figures are based on 12 weeks data

Kilometre Performance

% Kilometres Operated



Date Range / Period	7	8	9	10	11	12	13	1	2	3	4	5	6
18/09/10 to 16/09/11	93.87	93.03	78.10	91.87	97.91	96.63	96.08	96.71	93.70	93.73	90.44	96.31	94.75
19/09/09 to 17/09/10					98.70	98.54	96.54	98.02	96.40	96.03	94.36	94.40	95.52
Min Standard	98.00	98.00	98.00	98.00	98.00	98.00	98.00	98.00	98.00	98.00	98.00	98.00	98.00

Kilometre figures are based on 4 weeks data