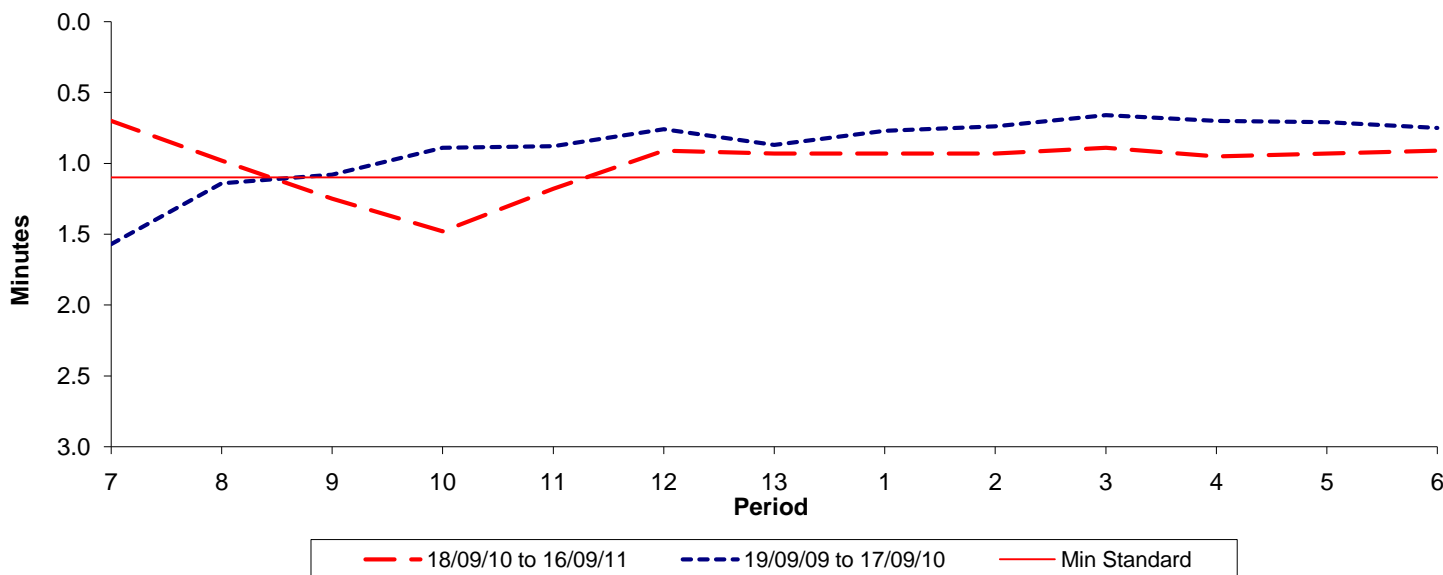




Reliability Performance (High Frequency)

Excess Waiting Time (minutes)

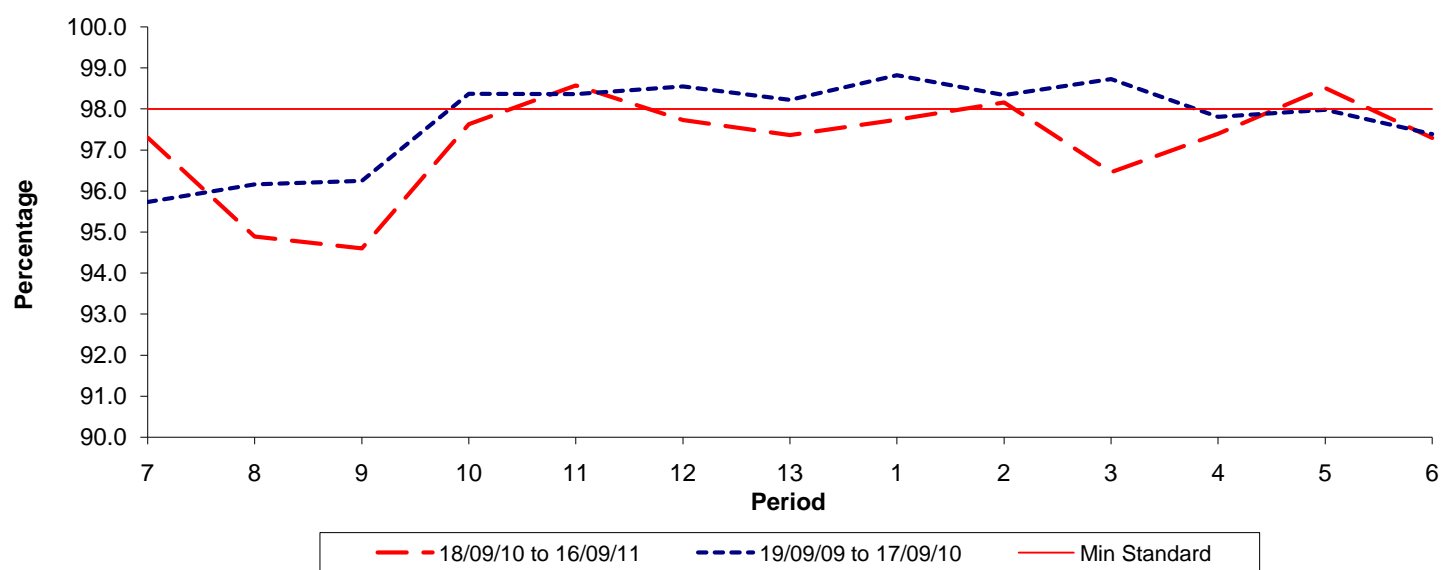


Date Range / Period	7	8	9	10	11	12	13	1	2	3	4	5	6
18/09/10 to 16/09/11	0.70	0.98	1.25	1.48	1.18	0.91	0.93	0.93	0.93	0.89	0.95	0.93	0.91
19/09/09 to 17/09/10	1.57	1.14	1.08	0.89	0.88	0.76	0.87	0.77	0.74	0.66	0.70	0.71	0.75
Min Standard	1.10	1.10	1.10	1.10	1.10	1.10	1.10	1.10	1.10	1.10	1.10	1.10	1.10

Excess Waiting Time figures are based on 12 weeks data

Kilometre Performance

% Kilometres Operated



Date Range / Period	7	8	9	10	11	12	13	1	2	3	4	5	6
18/09/10 to 16/09/11	97.30	94.89	94.60	97.63	98.57	97.73	97.36	97.74	98.16	96.46	97.39	98.51	97.29
19/09/09 to 17/09/10	95.73	96.16	96.25	98.37	98.37	98.55	98.23	98.82	98.34	98.73	97.81	97.98	97.39
Min Standard	98.00	98.00	98.00	98.00	98.00	98.00	98.00	98.00	98.00	98.00	98.00	98.00	98.00

Kilometre figures are based on 4 weeks data