

SILVERTOWN TUNNEL

**Preliminary
Environmental
Information Report:
Appendix 15.A**

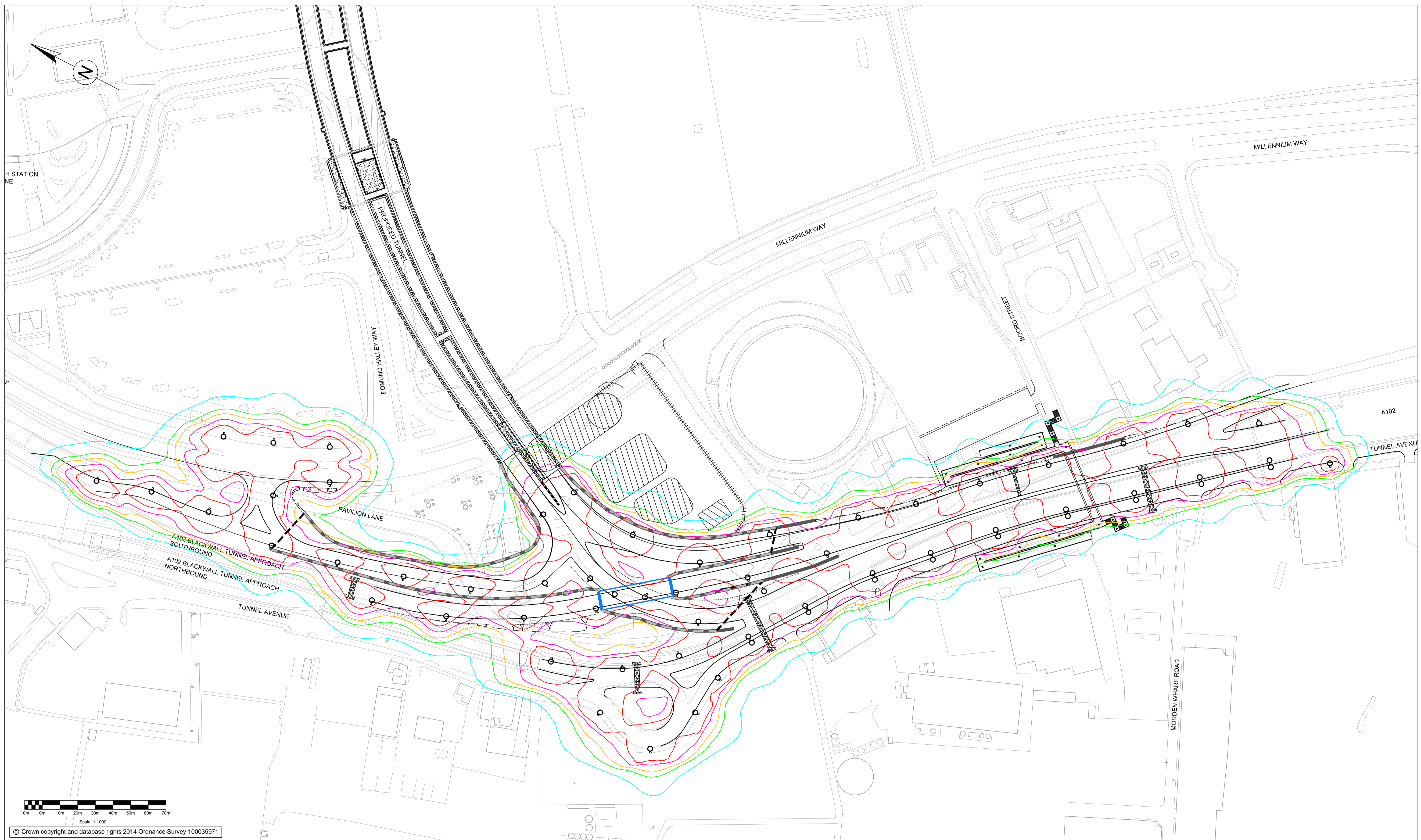
**Indicative Lighting
Drawings**

THIS PAGE IS LEFT INTENTIONALLY BLANK

Please note that changes have been made to the junction layouts since the issue of the drawings.

THIS PAGE IS LEFT INTENTIONALLY BLANK

Millimetres
100
10
0
DO NOT SCALE



SAFETY, HEALTH AND ENVIRONMENTAL INFORMATION

In addition to the hazards/risks normally associated with the types of work detailed on this drawing, note the following significant residual risks (Reference shall also be made to the design hazard log).

Construction

- National grid electricity and gas utilities present
- High risk of encountering unexploded ordnance (UXO) during the civil works.
- Ground contamination from former gas works

Maintenance / Cleaning

- No significant risks

Use

- No significant risks

Decommissioning / Demolition

- No significant risks

NOTES

- THIS DRAWING IS NOT FOR CONSTRUCTION
- ALL DIMENSIONS ARE IN METRES UNLESS OTHERWISE STATED
- LIGHTING SYMBOLS ARE INDICATIVE AND NOT TO SCALE
- DESIGNED IN ACCORDANCE WITH BS 5489-1:2013 AND BS EN 13201-2:2003
- THIS DRAWING SHOULD BE PRINTED IN COLOUR
- ILLUMINANCE CONTOURS ARE CALCULATED ON A TWO-DIMENSIONAL PLANE AND DO NOT TAKE

ACCOUNT OF SOLID OBJECTS OR CHANGES IN TOPOGRAPHY. THEY SHOW THE LIGHTING LEVELS AT THE START OF THE SCHEME'S 6 YEAR MAINTENANCE CYCLE AND OPERATING AT 100% OUTPUT, THEREFORE SHOWING THE MAXIMUM EXTENT OF LIGHT SPILL AT THE CONTOUR VALUES SHOWN

- THE IMPACT OF LIGHTING UNITS THAT DO NOT FORM PART OF THIS SCHEME HAS NOT BEEN FACTORED IN THE ILLUMINANCE CONTOUR PLAN

ISOLUX KEY

- 20 LUX
- 10 LUX
- 5 LUX
- 3 LUX
- 1 LUX

KEY

- REFERENCE DESIGN LIGHTING COLUMN POSITION

P01	AC	BH	KS	05/11/14
First Issue				
P02	AC	BH	KS	17/11/14
First Issue				
P03	AC	BH	MF	05/12/14
First Issue				
P04	AC	MJC	MF	16/01/15
For TFL Review				
P05	DB	MJC	MF	23/04/15
Reference Design Submission				
Rev	Drawn / Des	Checked	Approved	Date
Description				

Drawing Status: **FOR REVIEW AND COMMENT**

Suitability: **S3**

ATKINS

Woodcote Grove
Ashley Road
Epsom
Surrey
KT18 5BW
Tel: +44 (0)1372 726140
Fax: +44 (0)1372 740055
www.atkinsglobal.com

Copyright © Atkins Limited (2014)

Client: **Transport for London**

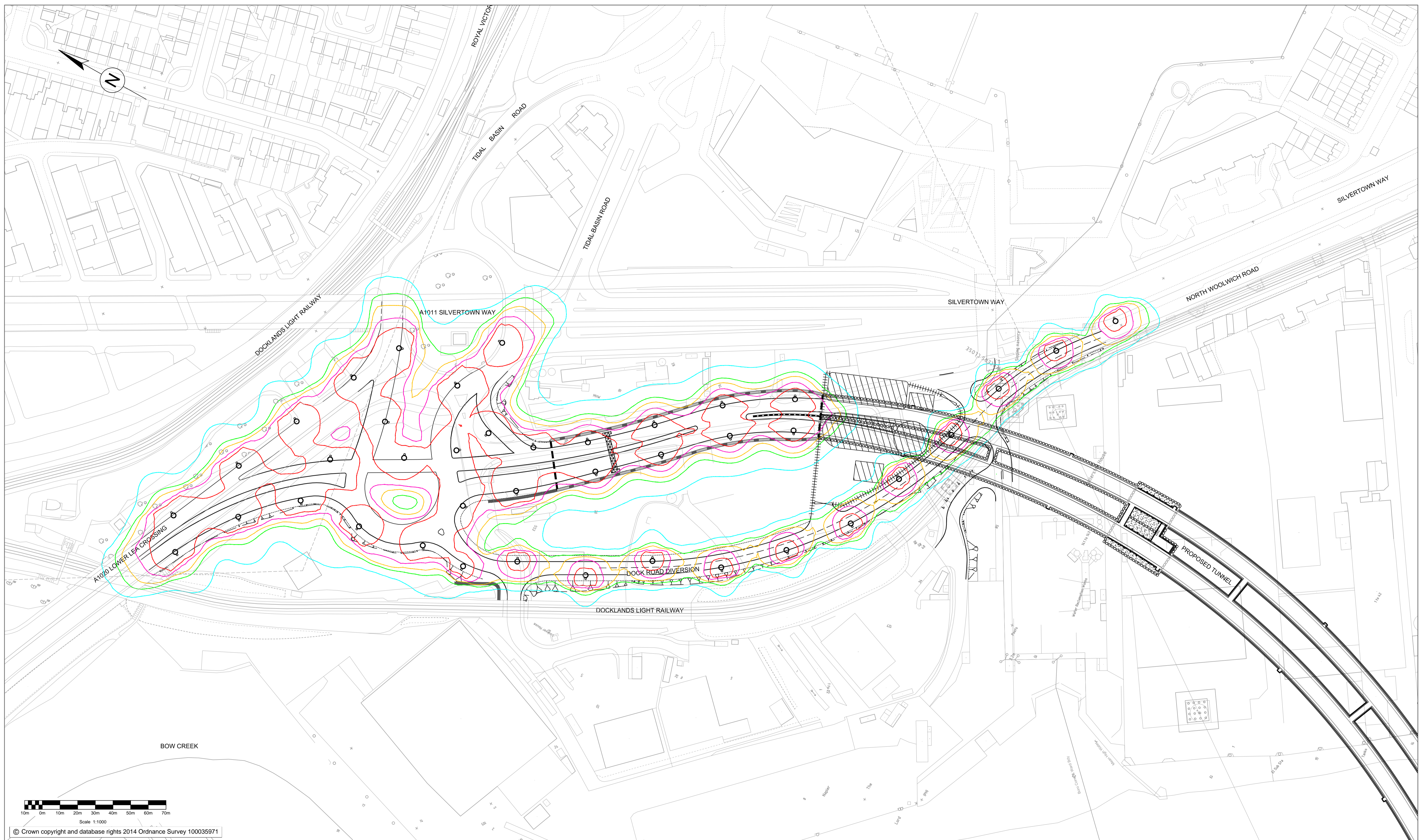
Scale	Designed / Drawn	Checked	Approved	Authorised
1:1000	DB	MJC	MF	MRM
Original Size	Date	Date	Date	Date
A1	23/04/15	23/04/15	23/04/15	23/04/15
Drawing Number	Revision			
STWTN-ATK-HLG-ASXX-DR-E-0001	P05			

Project Title: **SILVERTOWN TUNNEL REFERENCE DESIGN**

Drawing Title: **GREENWICH END (SOUTH) ISOLUX CONTOUR PLAN**

Plotfile: Apr 23, 2015 - 6:54pm by: BIRD7413

100
Millimetres
0 10
DO NOT SCALE



© Crown copyright and database rights 2014 Ordnance Survey 100035971

SAFETY, HEALTH AND ENVIRONMENTAL INFORMATION

In addition to the hazards/risks normally associated with the types of work detailed on this drawing, note the following significant residual risks (Reference shall also be made to the design hazard log).

- Construction**
 - National grid electricity and gas utilities present
 - High risk of encountering unexploded ordnance (UXO) during the civil works.
 - Royal Victoria sewer affected
- Maintenance / Cleaning**
 - No significant risks
- Use**
 - No significant risks
- Decommissioning / Demolition**
 - No significant risks

NOTES

1. THIS DRAWING IS NOT FOR CONSTRUCTION
2. ALL DIMENSIONS ARE IN METRES UNLESS OTHERWISE STATED
3. LIGHTING SYMBOLS ARE INDICATIVE AND NOT TO SCALE
4. DESIGNED IN ACCORDANCE WITH BS 5489-1:2013 AND BS EN 13201-2:2003
5. THIS DRAWING SHOULD BE PRINTED IN COLOUR
6. ILLUMINANCE CONTOURS ARE CALCULATED ON A TWO-DIMENSIONAL PLANE AND DO NOT TAKE

ACCOUNT OF SOLID OBJECTS OR CHANGES IN TOPOGRAPHY. THEY SHOW THE LIGHTING LEVELS AT THE START OF THE SCHEME'S 6 YEAR MAINTENANCE CYCLE AND OPERATING AT 100% OUTPUT, THEREFORE SHOWING THE MAXIMUM EXTENT OF LIGHT SPILL AT THE CONTOUR VALUES SHOWN

7. THE IMPACT OF LIGHTING UNITS THAT DO NOT FORM PART OF THIS SCHEME HAS NOT BEEN FACTORED IN THE ILLUMINANCE CONTOUR PLAN

ISOLUX KEY

- 20 LUX
- 10 LUX
- 5 LUX
- 3 LUX
- 1 LUX

KEY

☉ REFERENCE DESIGN LIGHTING COLUMN POSITION

P01	AC	BH	KS	05/11/14
First Issue				
P02	AC	BH	KS	17/11/14
First Issue				
P03	AC	BH	MF	05/12/14
First Issue				
P04	AC	MJC	MF	16/01/15
For TFL Review				
P05	DB	MJC	MF	23/04/15
Reference Design Submission				
Rev	Drawn / Des	Checked	Approved	Date
Description				

Drawing Status: **FOR REVIEW AND COMMENT** Suitability: **S3**

ATKINS

Woodcote Grove
Ashley Road
Epsom
Surrey
KT18 5BW
Tel: +44 (0)1372 726140
Fax: +44 (0)1372 740055
www.atkinsglobal.com

Copyright © Atkins Limited (2014)

Client: **Transport for London**

Scale	Designed / Drawn	Checked	Approved	Authorised
1:1000	DB	MJC	MF	MRM
Original Size	Date	Date	Date	Date
A1	23/04/15	23/04/15	23/04/15	23/04/15
Drawing Number	Revision			
STWTN-ATK-HLG-ANXX-DR-E-0001	P05			

Project Title: **SILVERTOWN TUNNEL REFERENCE DESIGN**

Drawing Title: **SILVERTOWN END (NORTH) ISOLUX CONTOUR LAYOUT**

Plotfile: Apr 23, 2015 - 5:54pm by: BIRD7413