

Northern Line Extension

Nine Elms and Oval

Community Liaison Group

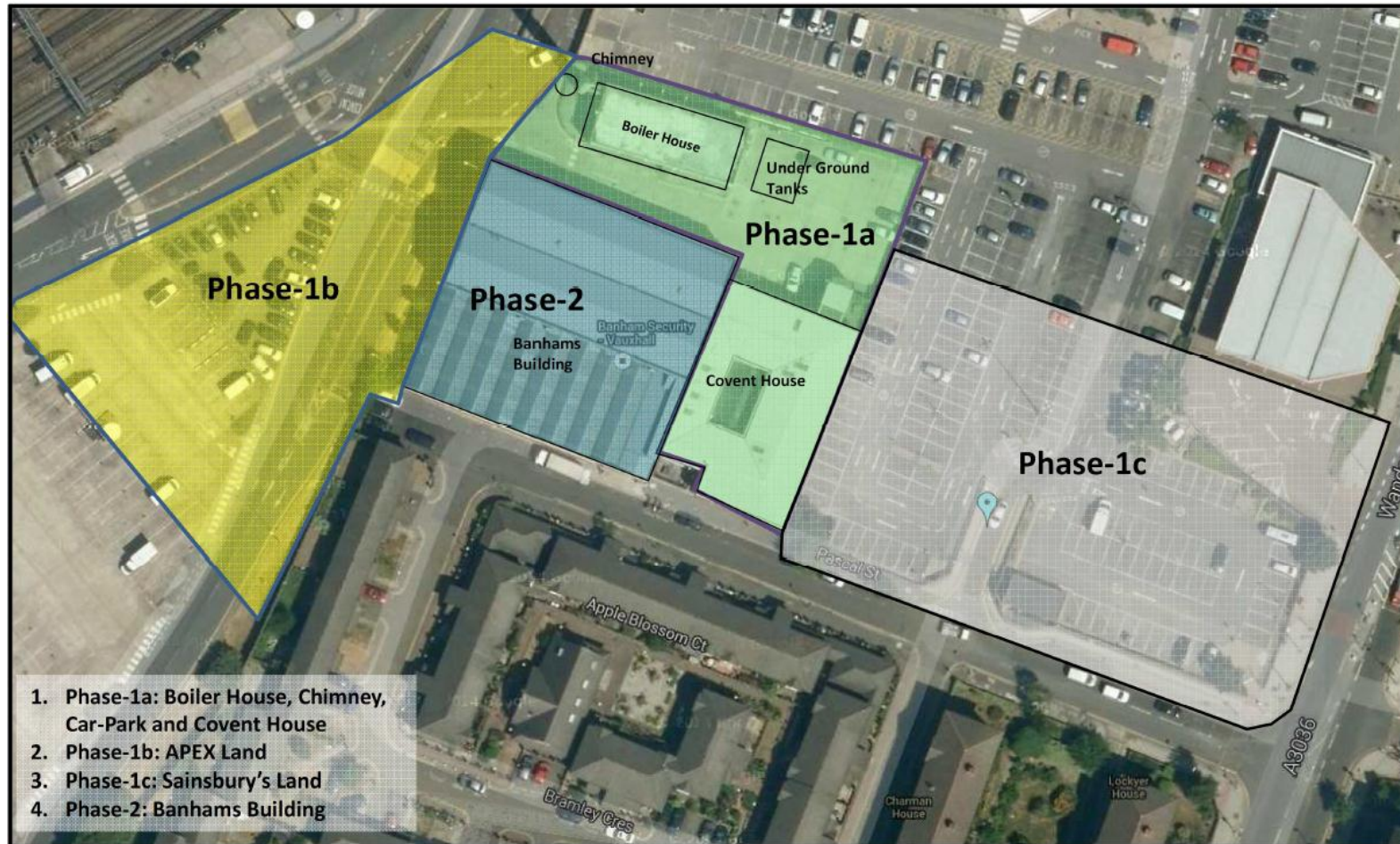
22.06.15



NLE Project timetable

Year	Key milestones
2014	Transport and Works Act Order decision, Design & Build contract signed
2015	Agreement on Code of Construction Practice Part B, Start of main works at all sites
2016	Start of Tunnel Boring Machines
2017	Completion of tunnelling
2018	Fit out of new stations, Kennington shafts complete inc reinstatement, work at Kennington station complete
2019	Testing, commissioning, trial operations
2020	NLE complete and in service

Nine Elms Overview



1. Phase-1a: Boiler House, Chimney, Car-Park and Covent House
2. Phase-1b: APEX Land
3. Phase-1c: Sainsbury's Land
4. Phase-2: Banhams Building



Summary Update March-June 2015



1) Hoarding installation



2) Installation of office cabins.
Fit-out being carrying out



3) Substation foundations



4) Access ramp in Pascal
Street



5) Tarmac removal and
piling mat excavation



6) Piling mat construction



Summary Update March – June 2015



7) Obstruction removal



8) Boiler House demolition



9) Covent House demolition



10) Demolition of Chimney



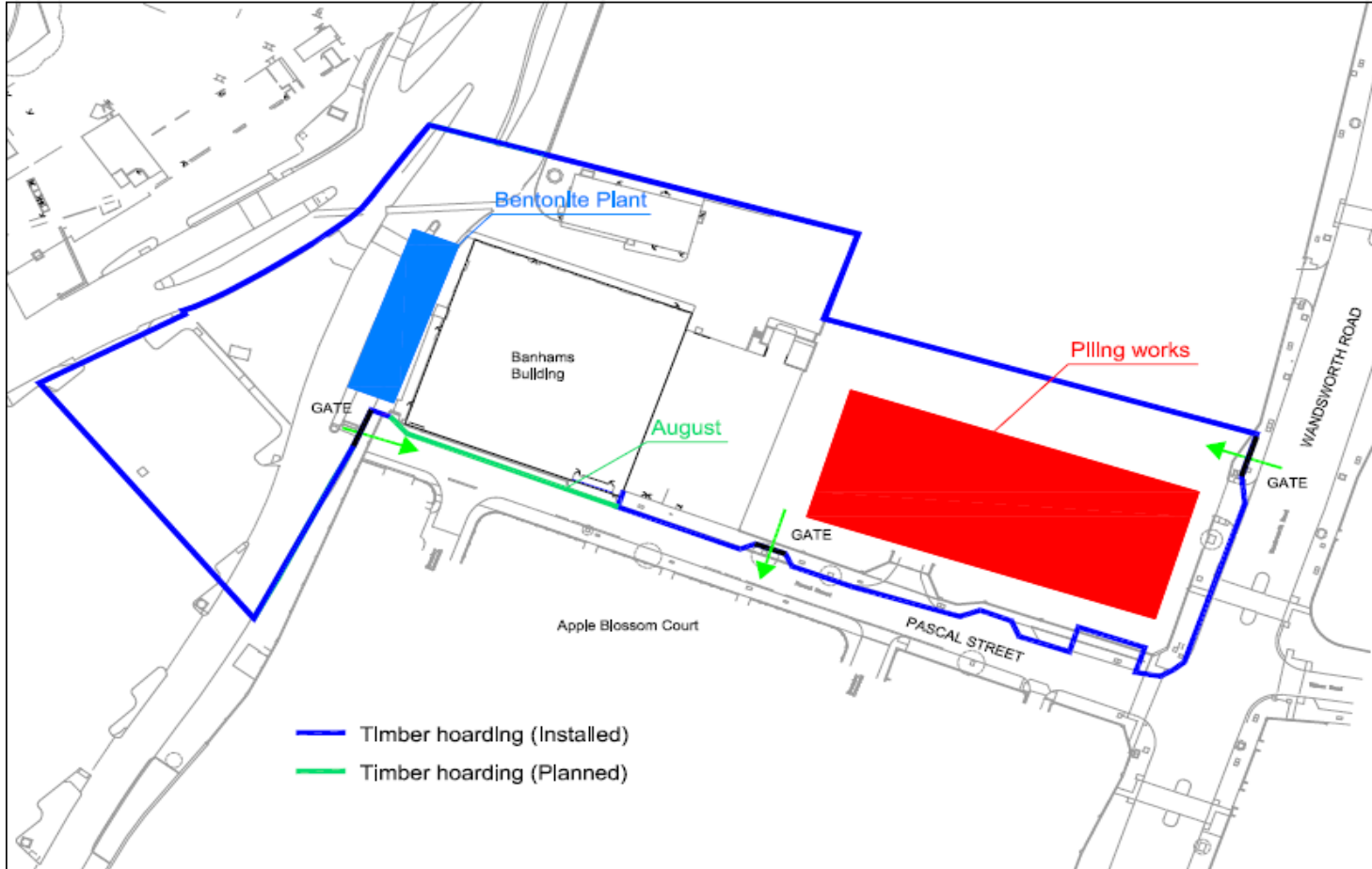
Nine Elms look ahead



Nine Elms	Enabling Works
Jun – Sept 15	<ul style="list-style-type: none">• Demolition of Banham’s building• Installation of hoarding and scaffold erection at the front of Banham’s building• Continue obstruction removal and build of piling platform and guide wall• Piling enabling works (bentonite plant construction)• Piling works in former Sainsbury’s car-park• Exit gate in Pascal Street will be used for site traffic• Hoarding graphics installed to TfL standards



Nine Elms look ahead / Traffic Management



Thank you

Measuring & Monitoring

- Damage assessment is being carried out for detailed monitoring scope.
- Installation of ground monitoring studs has been completed within the zone of influence of the piling works at Nine Elms, and baseline monitoring is ongoing
- We are currently liaising with building owners prior to the installation of monitoring equipment.
- We envisage that the monitoring equipment will comprise of Building Research Establishment (BRE) studs (structure levelling studs) and 3D geodetic prisms prior to piling commencing in August/September

Monitoring techniques

Buildings – Real time data:

3D geodetic prisms



Automatic Total Station (ATS)



Prisms

ATS: an electrical/optical instrument used in modern building construction to measure slope distances from the instrument to a particular point.



Monitoring techniques

Buildings – Manual data:

BRE studs (structure levelling studs)



Construction Noise

- Noise (and air quality) monitors will be installed on the site hoarding. This will complement the monitoring currently being undertaken.
- Noise predictions show that an acoustic shed will be needed to minimise the noise associated with 24/7 tunnelling works.
- For all other activities a standard height hoarding (2.4m) will provide sufficient screening to meet the requirements of the NLE Construction Noise Mitigation Scheme

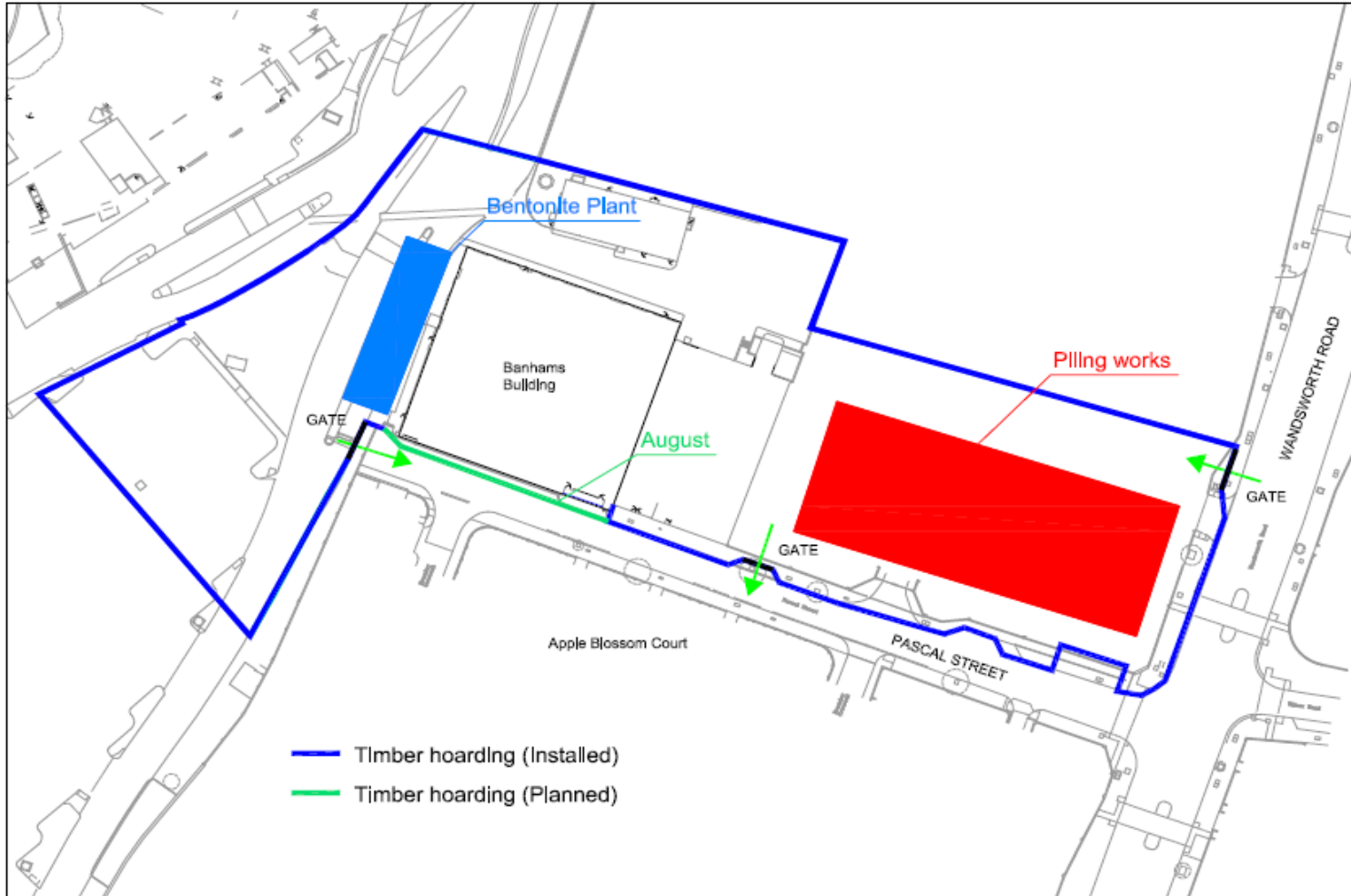
Hoardings Nine Elms



- Permanent hoardings have been installed at Nine Elms
- 2.4 metres high
- Corporate TfL standards followed
- Helpdesk contact details to be presented at all hoardings
- Installation of graphic work ongoing during June 2015



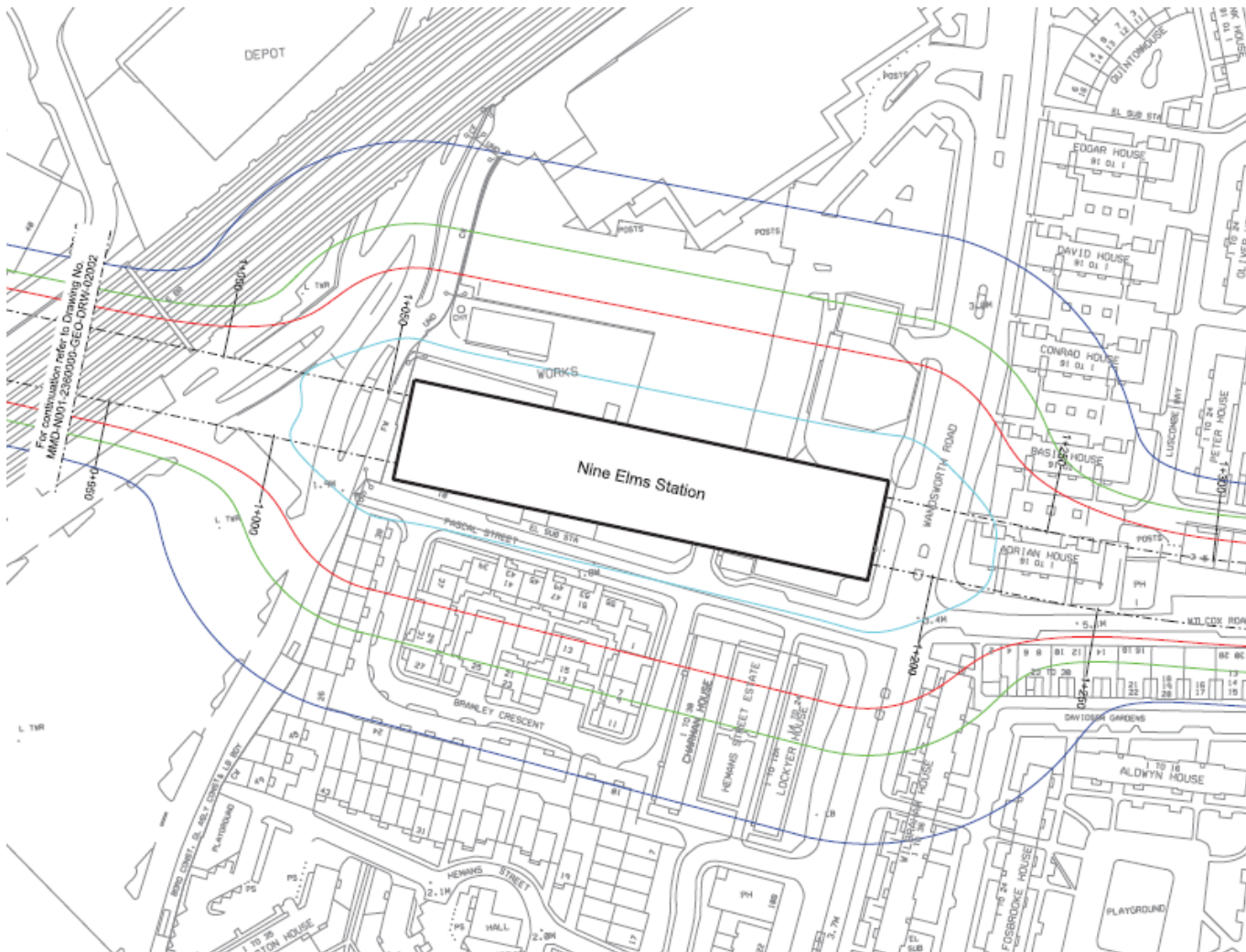
Hoarding at Nine Elms



Defect Surveys Nine Elms

- Defect Surveys to be undertaken by CPM (qualified chartered building surveyor) on properties predicted to experience 1mm or more settlement.
- TfL have sent initial letter to affected properties
- Nine Elms surveys to start in July 2015
- Where necessary, a second survey will be undertaken in the event of any claims for damage
- Written and photographic record and a copy will be available to the property owner.

Settlement Contours Nine Elms



LEGEND

- 1mm Settlement
- 5mm Settlement
- 10mm Settlement
- 25mm Settlement
- 50mm Settlement



Code of Construction Practice Part B

- The Code of Construction Practice was approved by the London Boroughs of Lambeth and Wandsworth in May
- The requirements of the Code of Construction Practice parts A and B have been incorporated into the FLO practices and procedures
- Core working hours are from 08:00 to 18:00hrs Monday to Friday and 08:00 to 13:00hrs on Saturdays



Complaints / Enquiries Summary

Three complaints received Nine Elms area

Date	Organisation	Address	Details of complaint/Enquiry	Response	Status
29/04/2015	Resident	Nine Elms	Personal approach to site team by resident claiming Flo work had caused dirty windows in property	AF contacted property managers and they visited and discovered that faulty guttering had caused dirty windows following heavy rain.	Closed
29/04/2015	Resident	Nine Elms	Personal approach to site team by resident claiming broken picture frame due to alleged vibrations.	Site team will replace picture frame as a goodwill gesture.	Closed
15/06/2015	Resident	Nine Elms	Resident complaining about noise coming from construction site	AF came back to this resident within 48h and explaining construction challenges on the ground and measures in place to mitigate. Acoustic blankets and monitoring. AF called her to follow up on e-mail. She advised that the noise wasn't bad the following day or the day of the contact and was very pleased that we are keeping the matter under observation.	Closed

Updates and newsletters

- Monthly Activity Updates sent out 20 April & 2 June.
- Via letter drop and emailing
- NLE Quarterly newsletter to be distributed mid June
- Drop in session held at Apple Blossom Court in April
- Community meeting attended at Wyvil Estate in March

Nine Elms Updates / Newsletters



Delivered April 20

Delivered June 2



Northern line extension

ACTIVITY NOTIFICATION

20 April 2015

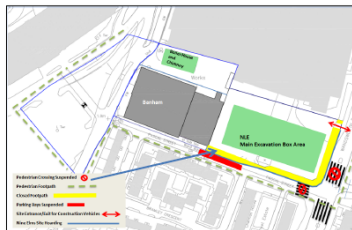
Nine Elms – Planned Works April 2015

The Northern line extension (NLE) works near you are progressing well and we would like to update you on the activities happening on site for the next four weeks.

We have commenced preparing the ground for the excavation of the future station. This includes breaking the existing concrete and removal of obstructions. The chimney and boiler house situated beside the car park will be demolished and we are also working on the demolition of the inside of Covent House. The construction of the site accommodation will also commence in this period.

There will be vehicle movements (lorries) to remove excavated material and delivery of construction material for the main working areas shown in green on the diagram below. Vehicles serving the site will use a one way system entering and exiting from Wandsworth Road. For the safety of pedestrians, the public footpath will change around the end of April as shown by the green dotted line on the diagram below.

Our core working hours are Monday to Friday 0800 to 1800 and on Saturday from 0800 to 1300



We will endeavour to minimise disturbance and will manage the work in accordance with the Code of Construction Practice, including the control of noise, vibration and dust using best practicable means. Traffic marshals will be on site to help with traffic and vehicle access and signage will be installed to manage the changes mentioned above.

If you have any concerns or queries, please contact us at nle@tfl.gov.uk or call our 24/7 helpdesk on 0343 222 2424

nle@tfl.gov.uk
0343 222 2424

Ref: FLO-N143-2360000-COM-NTF-00001

tfl.gov.uk/northern-line-extension



Northern line extension

MONTHLY UPDATE

Jun

Nine Elms Station

Thank you for your patience while we continue with the set-up of the Northern line extension (NLE) Elms worksite. It is progressing well and we would like to give you an update of what has already been achieved and the main activities planned for June.

Our main site situated on Pascal Street by the old Sainsbury's car park has now been cleared. The 1 chimney and boiler house have now been demolished. We have also installed permanent hoarding the site.

Pascal Street is now open and a ramp to facilitate vehicle movements to and from site has now been installed. Please note construction vehicles will be accessing the area both ways from and towards Wandsworth Road.

In June, we plan to complete the finishings on the hoardings and positioning our community notice around the site which will display our updates and contact details.

We will demolish Covent House and construct a platform to enable piling along the NLE main excavation area, see diagram 1 overleaf. We will keep deliveries of material for this activity within the core working hours.

Our Core working hours are: Monday to Friday 0800 to 1800 and Saturdays 0800 to 1300

We will endeavour to minimise disturbance and will manage the work in accordance with the Code of Construction Practice, including the control of noise, vibration and dust using best practicable means.

Please see overleaf a site diagram and some pictures of the existing site.

Your feedback is important to us. The next Nine Elms Community Liaison Group meeting will take place on Monday 22 June (venue to be confirmed). Please contact us if you would like to attend.

If you have any concerns or queries, please contact us at nle@tfl.gov.uk

or call our 24/7 helpdesk on 0343 222 2424

Ref: FLO-N143-2360000-COM-NTF-00004

nle@tfl.gov.uk
0343 222 2424
tfl.gov.uk/northern-line-extension



Construction workers NLE site Elms Elms



Demolition of the chimney and boiler house, Elms Elms

Ref: FLO-N143-2360000-COM-NTF-00004

nle@tfl.gov.uk
0343 222 2424
tfl.gov.uk/northern-line-extension



Skills and apprenticeships



- Skills & Employment Strategy, Delivery Plan for Schools and Young People on-going
- FLO to host 5 Work Experience Students from Ernest Bevin College, Wandsworth. Starting June 22.

Employment/Skills/Diversity on the NLE programme

- FLO is working in partnership with TfL and the local authorities – including the Nine Elms Vauxhall Strategy Board Employment, Training & Business Charter, Wandsworth Chamber of Commerce and Nine Elms Supply Chain
- Make sure employment/training opportunities are advertised within the job opportunity/brokerage schemes operated by Southwark, Lambeth & Wandsworth councils
- Encourage job starts for workless people in London, placement & taster positions, apprenticeships, skills development for staff, engagement with schools



Jobs and Business Opportunities



- FLO has created a working group with Local Authorities and local brokerages to ensure opportunities are advertised and promoted locally
- Local Employment and Procurement Group. NLE LEAP Group
- Small and medium business had the opportunity to meet with major contractors at an event in BPSD. FLO in attendance.
- FLO continues to engage with small and medium companies through events and endeavours to recruit / source locally when possible.



Community engagement strategy



- Draft Strategy is work in progress.
- Includes community comments and forecast activities from FLO
- **6 months look ahead include:**
- Engagement with local groups
- Community Drop-in sessions for Kennington residents on June 18
- School activities to start within the next period.
- Arts and Culture plan being developed by TfL



Consents



Key approvals granted since the last CLG meeting

Code of Construction Practice Part B (planning condition 7) – all sites	L B Lambeth, Wandsworth
All sites – application to discharge planning condition 10 - Archaeology – all sites	L B Lambeth, Wandsworth
Approval of the Yellow Box Junction (planning condition 18) – Kennington Park	LB Southwark
Marine approvals (TWAO protective provisions) - Battersea	Environment Agency, Marine Management Organisation, Port of London Authority

Current applications under determination

Removal of a single tree (planning condition 5)– Kennington Green	LB Lambeth
Application for the fixing of monitoring to Listed structures (planning condition 11)– Kennington Park and Kennington Green	LB Lambeth and LB Southwark

