



FERROVIAL AGROMAN
LAING O'ROURKE JV

Northern Line Extension

Nine Elms and Oval

Community Liaison Group

3rd May 2017

Delivering the Northern line extension with

ferrovial
agroman



MAYOR OF LONDON



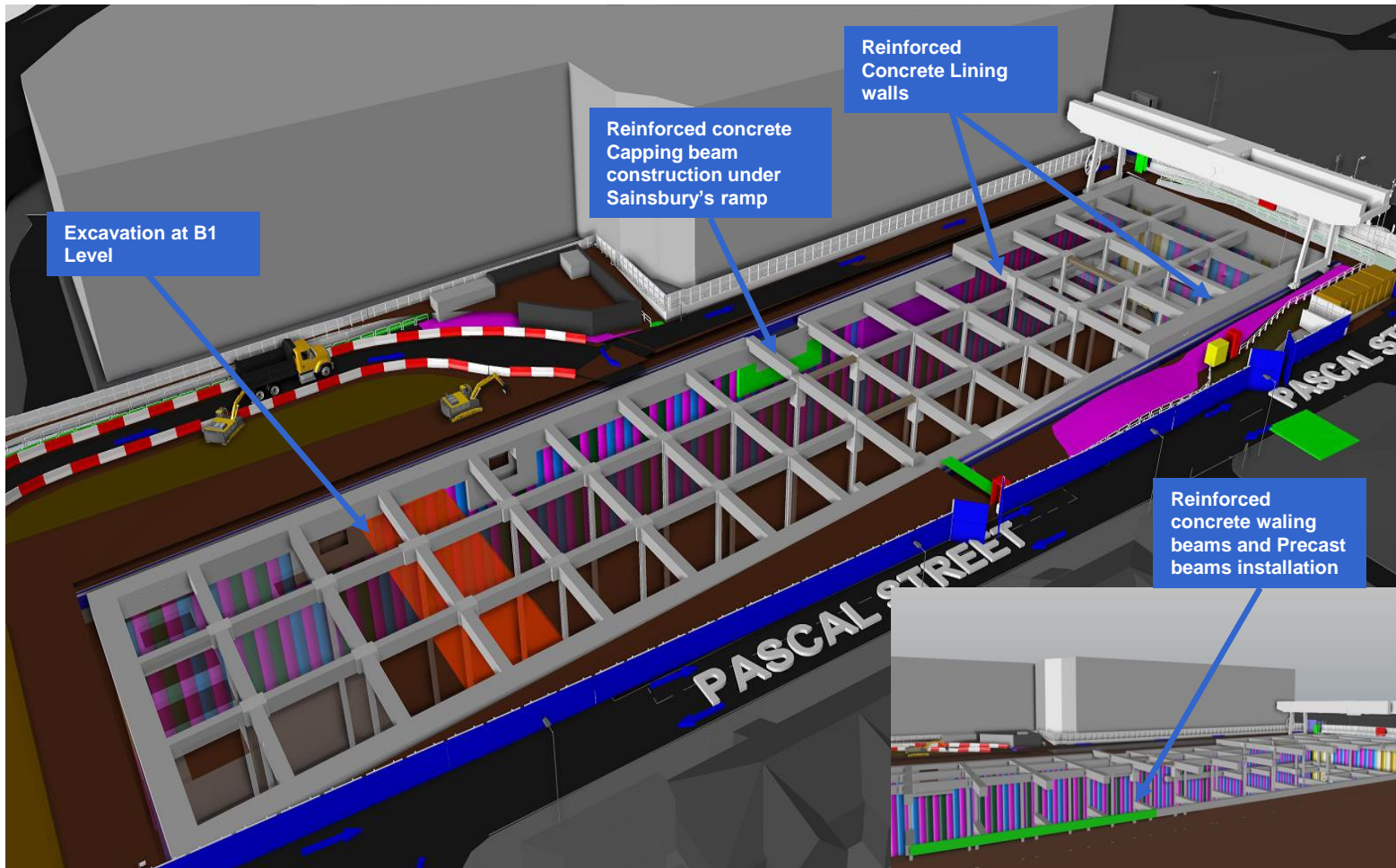
TRANSPORT
FOR LONDON



Site Map Overview – May 17



FERROVIAL AGROMAN
LAING O'ROURKE JV



Summary Update Jan – Apr 2017



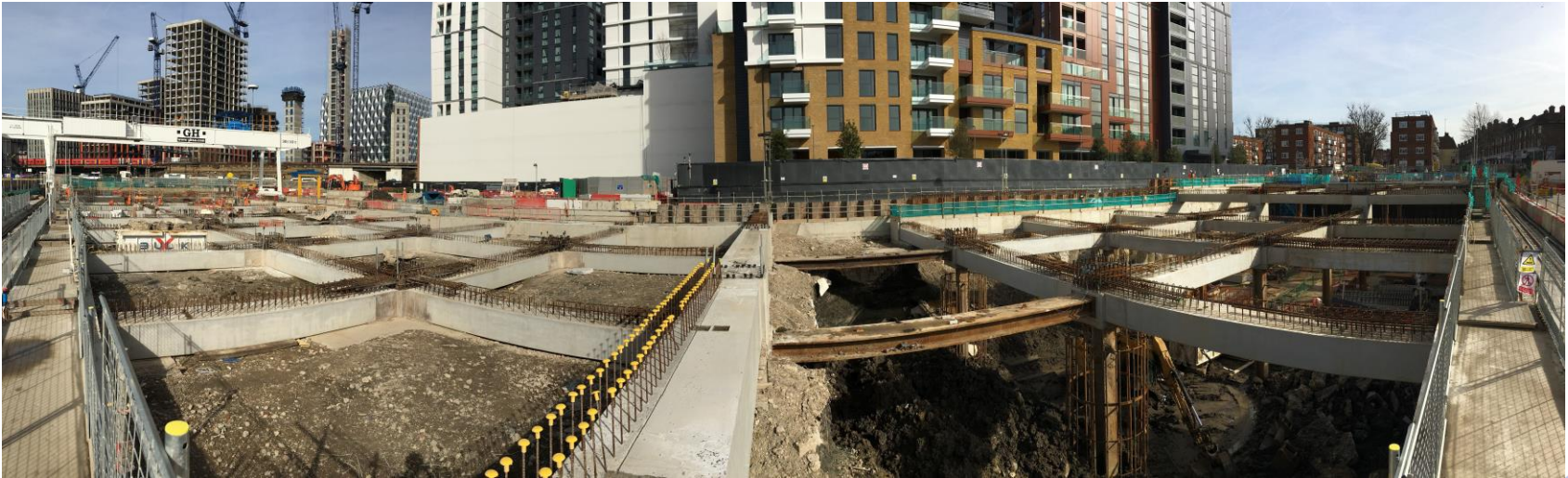
FERROVIAL AGROMAN
LAING O'ROURKE JV

- Reinforced concrete works at ground level completed (top down strategy)
- All precast beams installed at ground level, including in-situ stitches (links between the beams and the columns)
- Continue with Excavation works to Basement 1 level
- Continue with reinforced concrete works commenced to Basement 1 level including precast beams installation
- Gantry now operating along the whole station



Look Ahead May – July 2017

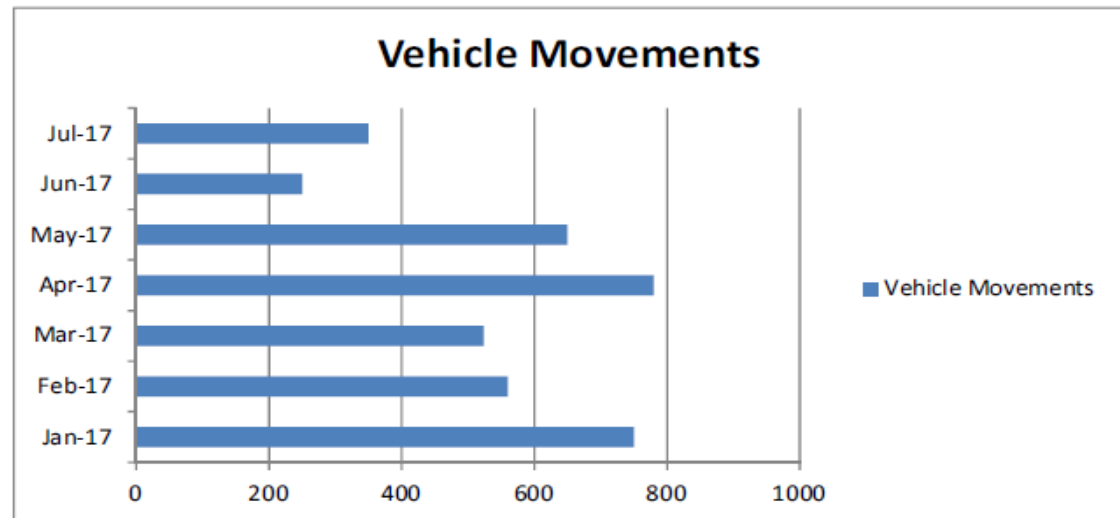
- Completion of excavation works to Basement 1 level
- Construction of in-situ slab at west end (Basement 1 level)
- Install more precast beams and construct the in-situ stitches to the columns (Basement 1 level)
- Continue with reinforced concrete works (Basement 1 level)



Logistics. Vehicle Movements Jan - July 2017

Vehicle movements

Jan-17	750
Feb-17	560
Mar-17	524
Apr-17	780
May-17	650
Jun-17	250
Jul-17	350



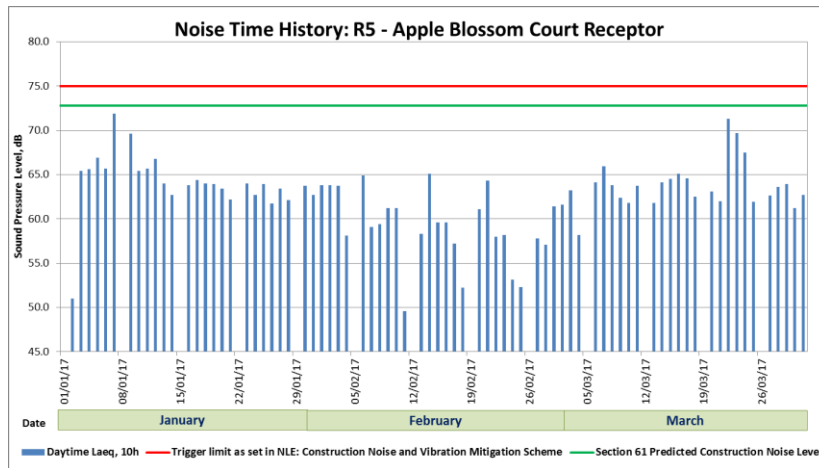
- Principal vehicle movements related to :
 - Muck away operations
 - Concrete, rebar and precast beams deliveries

Monitoring Jan – Mar 2017

Environmental monitoring



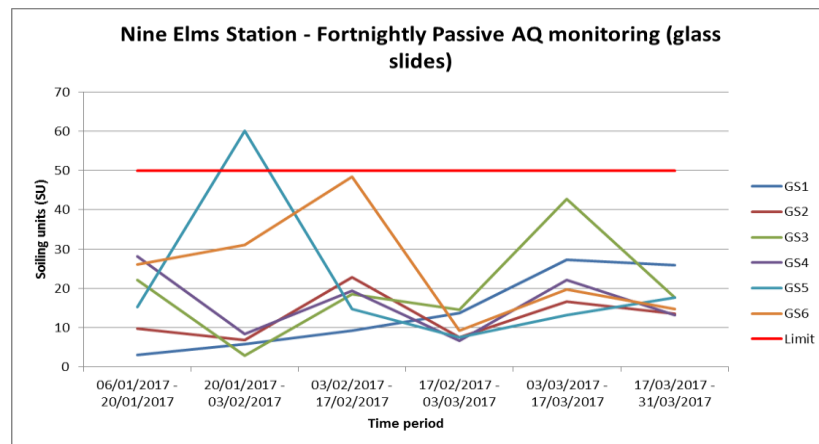
FERROVIAL AGROMAN
LAING O'ROURKE JV



NOISE – During these three months of monitoring there have been no noise triggers associated with the Nine Elms station worksite.

No noise complaints have been received in the monitoring period.

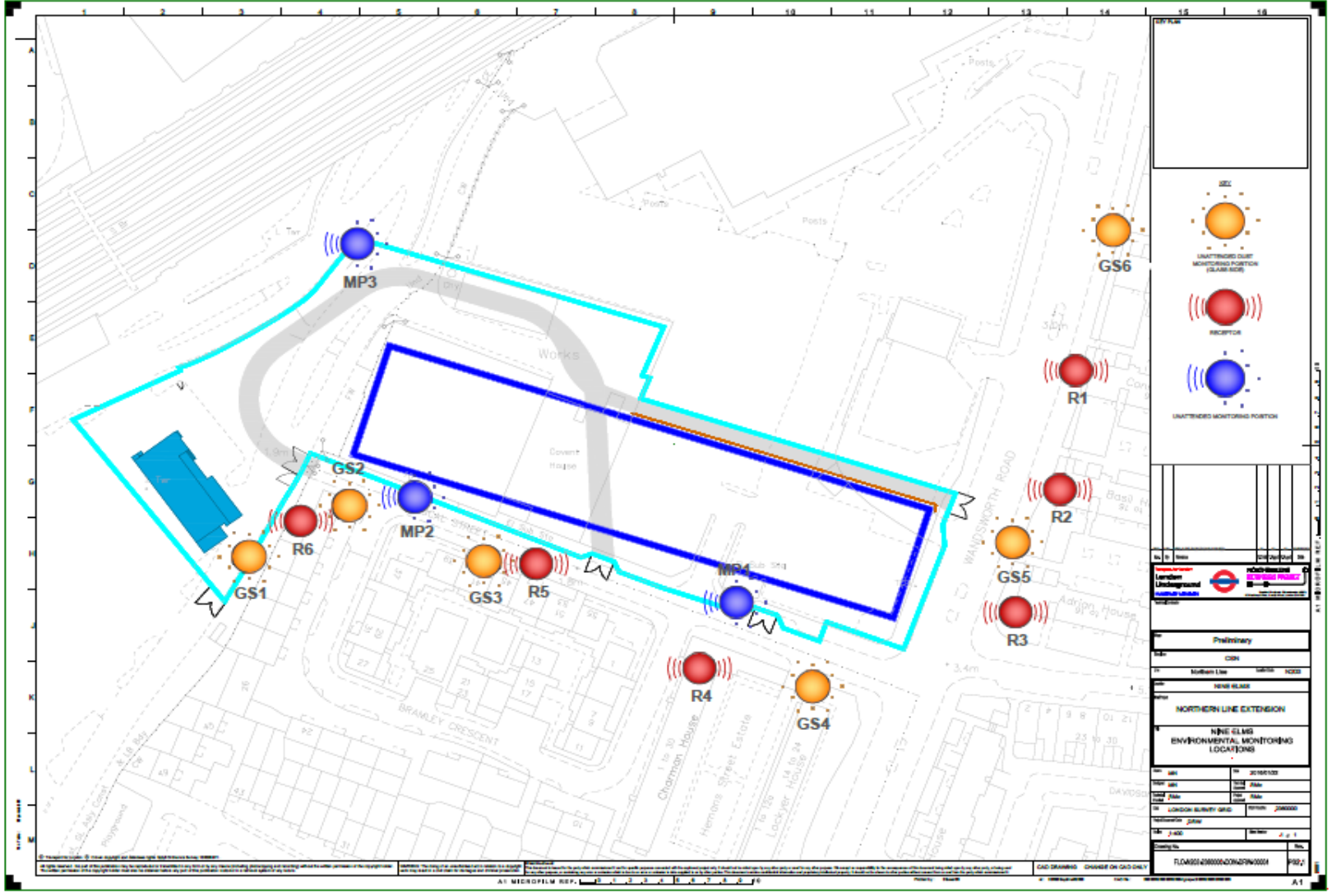
AIR QUALITY – Dust deposition rates have been lower than the guidance criterion of 25 SU per week set out by the Environmental Agency, with the exception of the GS5 presenting 60SU for the period 20-01-17 to 03-02-17. The location of this glass slide is highly influenced by road traffic of Wandsworth Road.



Working Hours – Shoulder hours are now to be utilised from 07:00 and 08:00 and between 18:00 and 19:00 to allow removal of excavation material. Authorisation from local authorities is granted on a trial basis.



Environmental Monitoring. Receptors Location



Your Feedback



FERROVIAL AGROMAN
LAING O'ROURKE JV

Feedback	Action
Additional information on tunnelling activities	Special activity notification has been prepared and will be delivered ahead of tunnelling. (4 weeks)
Additional engagement with new resident areas	Engagement session planned for mid-May to address new Estates near Nine Elms.
Road cleaning	Road sweepers working daily.
Pedestrian access to Sainsbury's.	A pedestrian walkway is planned to be installed along Wandsworth Road.
Proactive engagement ahead of works	Letter drop and door knocking to future impact properties . Changes in working hours and planned activities are communicated in advance.



NLE Skills and Employment



CATEGORY	Overall / Target	Yearly Target	Yearly Status
Apprenticeships (1=1SLNT)	66	12	20 (Local Boroughs 2 London 6)
Worklessness job/ grad starts (1=1SLNT)	41	6	57 (> 26 weeks in NLE) Lambeth: 6 Southwark: 3 Wansdworth: 1 Stockwell: 1 Chelsea: 1 Greenwich: 1 Other London boroughs: 23 (confirmed by employer) 21- awaiting confirmation by employer
Educational / Career support (20h=1SLNT)	935h (46 SLNT)	210	714
Total SLNT Target over project			168
Total SLNT so far			154

NLE Skills and Employment



- Between Feb 17 and Mar 17 we had a contract amendment to our Works Information, which means we now report our SLNT achievements to the LU in a different way.
- Definitions for Targets still the same as before:
 - Apprentices qualify for 1 SLNT point when they begin, each year they're on the project and complete their apprenticeships.
 - Worklessness employment is counted once the person passes their 26 week retention date on the project.
- FLO to take on 3 candidates of TfL & Peabody Pre-apprenticeship Pilot Scheme for work experience on the NLE this summer
- Wandsworth Prison in discussions around training HMPW can provide to soon to be released offenders so we can try and equip them with the skills they need to work on an infrastructure project and begin a rehabilitation programme
- Table provided with full details.

Engagement Opportunities

- CLG meetings
- One to one meetings
- Drop in sessions
- School and Youth Engagement
- Stakeholder Activities
- LEAP group meetings



Ways to contact us

- It is important that calls are logged through the NLE 24/7 helpdesk on 0343 222 2424 Option 1
- Email nle@tfl.gov.uk
- Regular Drop In sessions
- Please visit:

<https://tfl.gov.uk/northern-line-extension>