

Northern line extension

MONTHLY UPDATE

January-February 2016

Kennington Park

Dear neighbour,

We would like to update you on the Northern line extension works near you at Kennington Park.

What is planned:

Work will continue on the installation of the piling prior to the commencement of excavation of the shaft, which will be a reception chamber for the tunnel boring machines (TBM's) and the two storey structure below the future head house. The piling operation is due for completion in February 2016. More than 160 piles of the 304 to be constructed in total have now been completed.

During January and February we will be constructing the concrete capping beams on top of the piles and temporary foundations will be put in place ready for the installation of the acoustic enclosure. The enclosure will be built prior to the delivery and erection of the crane which will be used during the sinking of the shaft, the tunnelling operation and the eventual removal of the Tunnel Boring Machine from the completed section of tunnel (please see image overleaf).

During concreting operations, there may be occasions when our work may have to overrun the normal core working hours. This is due to the need to ensure the safety and integrity of the completed structure and must be completed in one uninterrupted operation. The works to construct the capping beams and foundations are not anticipated to generate significant noise levels but activity on the site may be noted. We will endeavour to minimise disturbance and will diligently manage and monitor the work in accordance with the Code of Construction Practice, including the control of noise and vibration, using best practicable means and keeping within agreed environmental limits.

The main purpose of an acoustic enclosure is to demonstrate best practicable means in further reducing the potential noise levels of the 24/7 sprayed concrete lining tunnelling works which are planned to commence around spring 2016. A noise modelling study has predicted the enclosure will provide at least 20dB(A) of noise attenuation in addition to further mitigation for dust associated with the removal of spoil from the tunnels. Any possible light pollution arising from task lighting, associated with overnight tunnelling works, will also be contained.

Acoustic enclosures have been used successfully on recent Crossrail contracts and are recognised as current best practice. Without this additional mitigation we believe that there is an unacceptable risk that, at times, NLE Construction Noise and Vibration Mitigation Scheme and noise thresholds agreed with the Local Authorities may be breached.

Please see on the overleaf page a few images of the progress of our Kennington Park site and an artist impression of the acoustic enclosure to be installed in the coming weeks.

PLEASE TURN OVER

nle@tfl.gov.uk

0343 222 2424

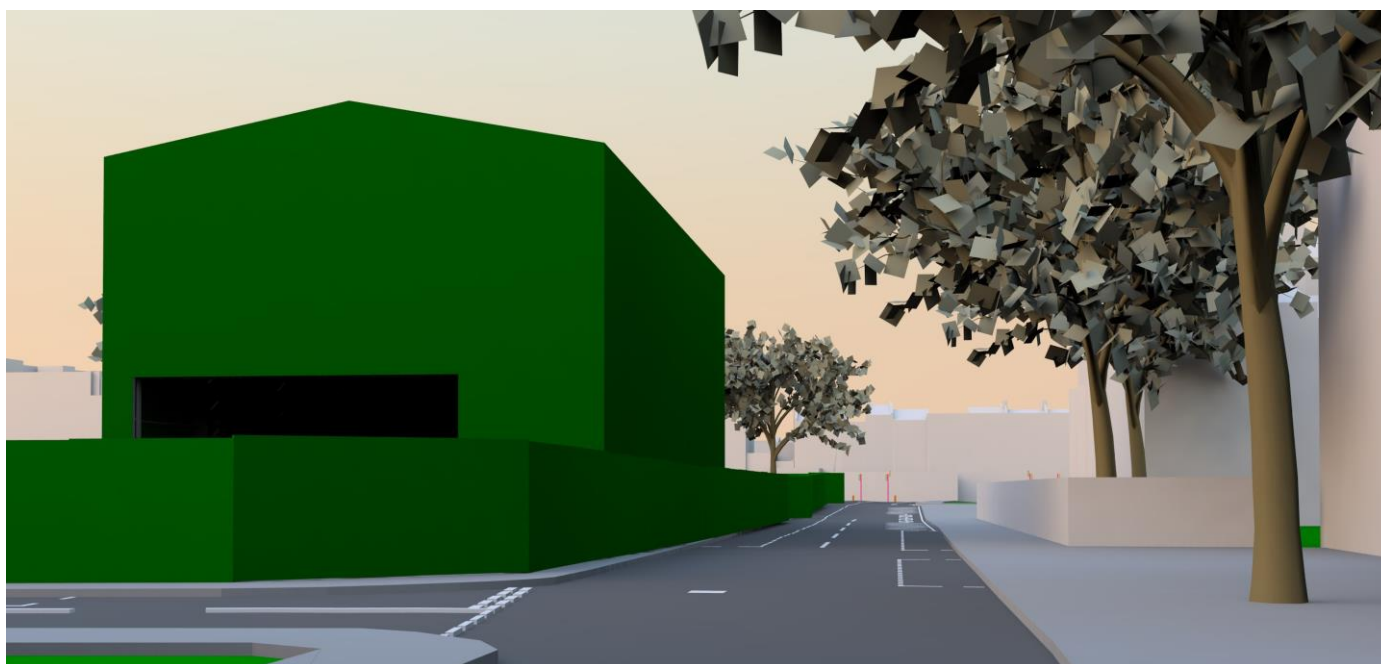
tfl.gov.uk/northern-line-extension



Piling Operations at Kennington Park



Overview of the Kennington Park site. Dec' 15



Acoustic Enclosure at Kennington Park. Artist impression.

Our core working hours are: **Monday to Friday 0800 to 1800 and on Saturday from 0800 to 1300** however it is possible that overruns may occur due to concrete pours being delayed or other unforeseen circumstances. We will endeavour to advise the community if this occurs.

Your feedback is important to us. We will continue to hold regular "Drop In" days at the Montford Place work site so that residents can meet staff and discuss any concerns or queries. We will advise you when the next session is planned.

If you have any concerns or queries, please contact us at nle@tfl.gov.uk or call our 24/7 helpdesk on 0343 222 2424 (Option 1)

nle@tfl.gov.uk

0343 222 2424

tfl.gov.uk/northern-line-extension