

Surface Transport

2009



Collisions and casualties on London's roads



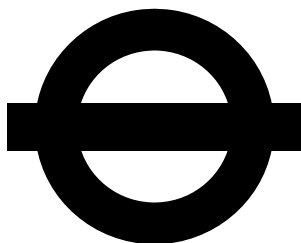
Collisions and Casualties on London's roads 2009

October 2010

This report presents information on road traffic collisions occurring on the public highway involving personal injury in the Greater London area. These are collisions reported to the Metropolitan and City of London police services during 2009 in accordance with the *Stats 19* national reporting system.

The Greater London area comprises the 32 London boroughs and the City of London. It is the largest metropolitan area in Great Britain.

Data is presented on collisions, casualties injured and types of vehicles involved. These are presented in total and also analysed by the range of factors collected about each collision as part of the *Stats 19* system. Data has been presented to show the main collision, casualty and vehicle trends in Greater London during 2009 in each of the London boroughs. These factors include severity of collision and casualty, weather and road surface conditions, junction control, class of road user, age and gender of casualty, vehicle type and vehicle manoeuvre.



Road Safety in London

Copyright
Transport for London
October 2010

Please send any enquiries or requests for collision data or further information about this work to:

Modal Policy
Better Routes and Places
Transport for London
Palestra
197 Blackfriars Road
London SE1 8NJ

Brief extracts of this publication may be reproduced provided the source is fully acknowledged. Proposals for larger extracts should be requested at the above address.

Contents

1 Introduction

2 Collision data 2009

3 Casualties data 2009

4 Vehicle data 2009

5 Collision costs

6 Appendices

Index of tables and figures

Introduction		Page
Table A	Summary of changes in casualties	10
Fig 1.1	Total casualties 2000-2009	14
Fig 1.2	Killed or seriously injured casualties 2000-2009	14
Fig 1.3	Pedestrian casualties 2000-2009	15
Fig 1.4	Pedal cyclist casualties 2000-2009	15
Fig 1.5	Powered two wheeler casualties 2000-2009	16
Fig 1.6	Car casualties 2000-2009	16
Fig 1.7	Child casualties 2000-2009	17
Fig 1.8	Fatal casualties 1972-2009	17
Fig 1.9	Killed and seriously injured casualties 1972-2009	18
Fig 1.10	Total casualties 1972-2009	18
 Collisions		
Fig 2.1	Collisions 2005-2009 (histogram)	19
Fig 2.2	Pedestrian and non-pedestrian collisions 2005-2009 (histogram)	19
Table 2.3	Collisions by severity and borough 2009	20
Table 2.4	Collisions by severity, borough and month (33 borough tables)	21
Table 2.5	Collisions in 2009 tabulated by severity and month	37
Table 2.6	Collisions by junction detail and borough 2009	38
Fig 2.7a	Fatal collisions 2005-2009 (histogram)	39
Fig 2.7b	Serious collisions 2005-2009 (histogram)	39
Table 2.8	Collisions at junctions by junction control and borough 2009	40

		Page
Table 2.9	Collisions by weather and borough 2009	41
Table 2.10	Collisions involving a parked vehicle 2009	42
Table 2.11	Collisions by road surface condition and borough 2009	43
Fig 2.12	Collisions on a wet road surface 2005-2009 (histogram)	44
Fig 2.13	Collisions in the dark 2005-2009 (histogram)	44
Table 2.14	Collisions by road class and borough 2009	45
Table 2.15	Collisions involving a pedestrian by severity and borough 2009	46
Table 2.16	Pedestrian collisions by month and borough 2009	47
Table 2.17	Collisions involving a pedestrian crossing road by pedestrian action and borough 2009	48
Table 2.18	Collisions by day of week and time of day 2009	49
Table 2.19	Collisions by lighting condition and borough 2009	50
Table 2.20	Collisions by speed limit and borough 2009	51
Table 2.21	Collisions by highway authority and borough 2009	52
Fig 2.22	Collisions by month 2009 (histogram)	53
Fig 2.23	Collisions by day of week 2009 (histogram)	53
Fig 2.24	Collisions by hour of day 2009 (histogram)	54
Casualties		
Table 3.1	Casualties by mode of travel and severity 2009	55
Table 3.2	Casualties by mode of travel, age group and gender 2009	55
Table 3.3	Casualties 2009 by borough and mode of travel percentage change over 2008	56
Fig 3.4	Vehicle casualties by type of road user 2005-2009 (histogram)	57

		Page
Fig 3.5	Pedestrian casualties and age group 2005-2009	58
Fig 3.6	Driver casualties by type of vehicle 2005-2009 (histograms)	59
Fig 3.7	Passenger casualties by type of vehicle (histograms)	60
Table 3.8	Driver and passenger casualties by age group and type of vehicle 2009	61
Table 3.9	Casualties by severity and borough 2009	62
Table 3.10	Casualties by borough, severity and mode of travel 2009 (33 borough tables)	63
Table 3.11	Casualties by severity and mode of travel 2009	79
Table 3.12	Pedestrian casualties by severity and borough 2009	80
Table 3.13	Driver casualties by severity and borough 2009	81
Table 3.14	Passenger casualties by severity and borough 2009	82
Table 3.15	Pedestrian casualties by pedestrian action and borough 2009	83
Table 3.16	Driver casualties by vehicle type and borough 2009	85
Fig 3.17	Pedestrian casualties at or within 50 metres of a crossing 2005-2009 (histogram)	86
Table 3.18	Passenger casualties by vehicle type and borough 2009	87
Table 3.19	Driver casualties by age group and borough 2009	88
Table 3.20	Passenger casualties by age group and borough 2009	89
Table 3.21	Pedestrian casualties by age group and borough 2009	90

		Page
Fig 3.22	Driver casualties with a positive breath test 2005-2009 (histogram)	91
Table 3.23	Bus and coach casualties by age group and borough 2009	92
Table 3.24	Pedestrian casualties by associated vehicle and time of day 2009	93
Table 3.25	Casualties by casualty class, gender and borough 2009	94
Table 3.26	Casualties by highway authority and borough 2009	95
Table 3.27	Pedal cyclist casualties by age group and borough 2009	96
Table 3.28	Powered two-wheeler casualties by age group and borough 2009	97
Table 3.29	Child casualties (0-15 years) by severity, highway authority and borough 2009	98
Table 3.30	Child pedestrian casualties (0-15 years) by severity, highway authority and borough 2009	99
Table 3.31	Casualties in Greater London on the TLRN by mode of travel and borough 2009	100
Table 3.32	Casualties in Greater London on borough roads by mode of travel and borough 2009	101
Table 3.33	Casualties in Greater London on Highways Agency roads by mode of travel and borough 2009	102
Table 3.34	Casualties in Greater London on all roads by mode of travel and borough 2009	103

Vehicles		Page
Table 4.1	Vehicles involved in collisions by vehicle type and borough 2009	104
Table 4.2	Vehicles involved in collisions by age group and borough 2009	105
Table 4.3	Vehicles skidding or overturning by borough 2009	106
Table 4.4	Drivers of motor vehicles by breath test and borough 2009	107
Table 4.5	Vehicles involved in collisions by manoeuvre and borough 2009	108
Table 4.6	Vehicles involved in collisions by manoeuvre and vehicle type 2009	110
Fig 4.7	Age profile of motor vehicle drivers involved in collisions 2009 (histogram)	112
Fig 4.8	Age profile of positive breath tests 2009 (histogram)	112
 Costs		
Table 5.1	Collision costs (£'s at 2008 prices)	113

1

Introduction

1.1 Summary of general trends

In 2009, 23,239 personal injury collisions occurring on the public highway were reported to the Metropolitan and City of London police services within the Greater London area. This represents a slight increase of 0.5% over the 23,116 collisions recorded in 2008. These resulted in 27,979 casualties, a decrease of 0.6% compared to the 28,153 recorded in 2008.

These changes - as well as much of the data recorded in this report - need to be seen in the context of current national and London-wide casualty reduction targets. In March 2000 the former Government published its road safety strategy and casualty reduction targets for 2010 in the report *Tomorrow's roads: safer for everyone*.

The targets, compared with the average for 1994-98, are:

- a 40% reduction in the number of people killed or seriously injured in road collisions
- a 50% reduction in the number of children killed or seriously injured
- a 10% reduction in the slight casualty rate expressed as the number of people slightly injured per 100 million vehicle kilometres.

In addition, Transport for London published its first Road Safety Plan in November 2001. As well as endorsing the national targets the Plan recognised particular issues for vulnerable road users.

Consequently, the 40% reduction target for fatal or serious casualties was to be applied in London to:

- pedestrians
- pedal cyclists
- powered two wheelers

to ensure that attention is directed at these groups.

By 2004 these targets had been achieved in London, apart from those for powered two wheelers. The former Mayor therefore announced new, more challenging targets in March 2006, to be achieved by 2010:

- a 50% reduction in the number of people killed or seriously injured
- a 50% reduction in the number of cyclists and pedestrians killed or seriously injured
- a 40% reduction in the number of powered two wheeler users killed or seriously injured (unchanged)
- a 60% reduction in the number of children killed or seriously injured
- a 25% reduction in the slight casualty rate, expressed as the number of people slightly injured per 100 million vehicle kilometers.

These targets are supported by the current Mayor's Transport Strategy published in May 2010.

By the end of 2009:

- slight casualties were 37% below the 1994-98 average, following virtually no change (0.5 increase) to 24,752 in 2009. Note that slight casualty changes relate to absolute figures rather than rates
- all fatal or serious casualties were 52% below the 1994-98 average, following a 8% decrease to 3,227 in 2009
- child fatal or serious casualties were 72% below the 1994-98 average, following a decrease of 15% to 263 in 2009.

Considering the targets for vulnerable road users in London:

- pedestrian fatal or serious casualties were 51% below the 1994-98 average, after a decrease of 13% to 1,055 in 2009
- pedal cyclist fatal or serious casualties were 24% below the 1994-98 average, following a 3% decrease to 433 in 2009
- powered two wheeler user fatal or serious casualties were 24% below the 1994-98 average, after a 4% decrease to 706 in 2009. (see table A).

Table A: Summary of changes in casualties for London target categories by year 2009

Category	Target change by 2010 (%)	Casualties			% change by 2009 compared with	
		1994-98 average	2008	2009	2008	1994-98 average
Killed or seriously injured casualties						
Total	-50%	6,684.4	3,526	3,227	-8%	-52%
Pedestrians	-50%	2,136.6	1,208	1,055	-13%	-51%
Pedal cyclists	-50%	566.8	445	433	-3%	-24%
Powered two-wheelers	-40%	932.8	738	706	-4%	-24%
Children	-60%	935.4	310	263	-15%	-72%
Slight casualties						
Total	-25%	38,996.8	24,627	24,752	1%	-37%

For further information on progress towards the casualty reduction targets in London, see the report *Towards the year 2010: monitoring casualties in Greater London*, Issue 10 which was published in August 2010 by TfL.

Following recent change in government a decision about future road safety policy and the role of national targets in particular is awaited. In London, a new Road Safety Plan to 2020 is being prepared for consultation in the coming months.

The trend in total casualties in Greater London over the past ten years was generally flat between 1999 and 2000. However, in the subsequent nine years there has been a noticeable decline, although in the past two years this has been less marked (see figures 1.1 and 1.10). The remaining high numbers of casualties continue to place a substantial burden on society in terms of social, emotional and economic costs.

The cost to the community of collisions in Greater London for the year 2009 is estimated to be almost £2.2 billion at 2008 prices (see *Section 5: Collision costs*).

This suggests that resources still need to be invested in new and existing road safety programmes. This would enable activity to target those audiences and areas suffering from high levels of road casualties.

During 2009, casualties in Greater London accounted for around 13% of those in Great Britain as a whole. KSI casualties represented 12% (*source 'Reported Road Casualties Great Britain: Main Results 2009' Department for Transport 2009*).

The collisions and casualties occurred against a background in which total road traffic in London fell by 2% between 2007 and 2008, having also fallen by 1.4% in the previous seven years between 2000 and 2007. The general decline in London traffic between 2000 and 2007 is in contrast with the trend for traffic in Great Britain as a whole, which increased by 10% between 2000 and 2007. (*source Travel in London report 2 Transport for London, 2010*).

1.2 Background

This report provides background information on personal injury road traffic collisions on the public highway occurring within the Greater London area and reported to the police. This information will assist in policy formulation for road safety, traffic and transport planning studies, the production of road safety plans, and for reference purposes.

This is the 24th annual report published by Transport for London and its predecessor organisations. The individual tables in Section 2 (Collision Analysis), Section 3 (Casualty Analysis) and Section 4 (Vehicle Analysis) are produced without comment.

This annual report is presented primarily showing figures and tables only. The extensive commentary found in previous annual reports has been removed to make the document more manageable. Further analysis of London's progress towards the current road casualty reduction targets can be found in *Towards the year 2010: monitoring casualties in Greater London*.

The tables and graphical illustrations are those most commonly requested and not an exhaustive list of possible analyses of the data. Additional tabulations of collision, casualty and vehicle factors associated with personal injury collisions may be available on request (see appendices).

Appendix 6.1 provides information about changes in the coverage and reporting of collisions that it is important to be aware of when considering very long term trends.

Casualty Trends

Figure 1.1: Total casualties in Greater London 2000-2009

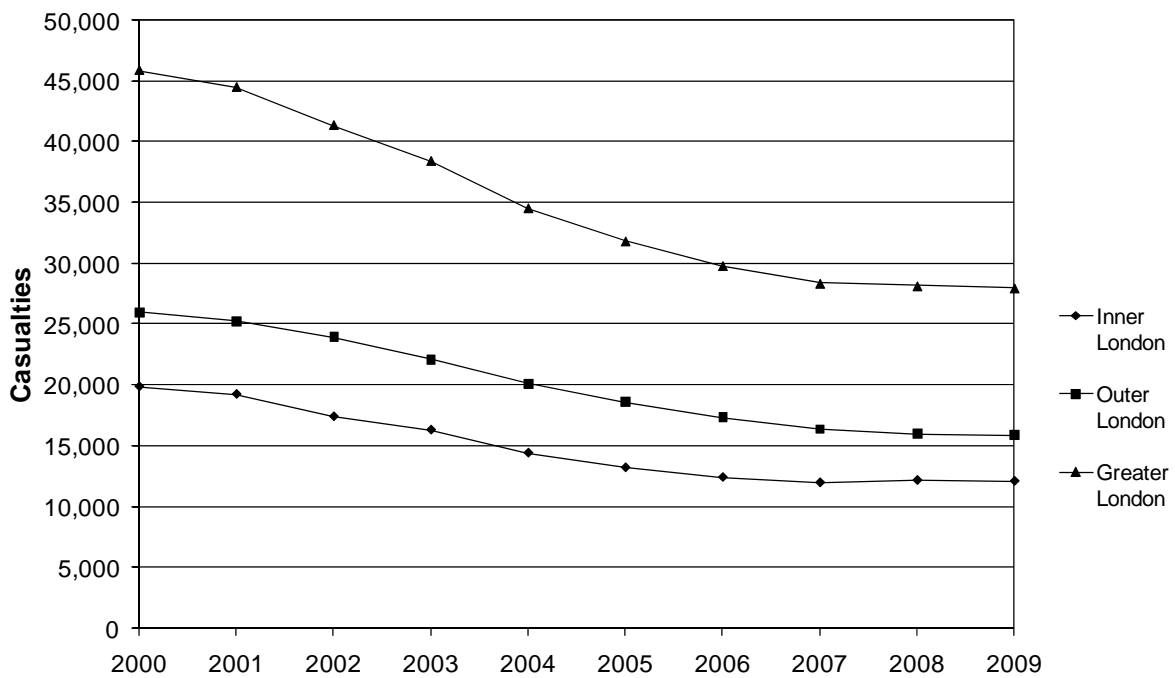


Figure 1.2: Killed and seriously injured casualties in Greater London 2000-2009

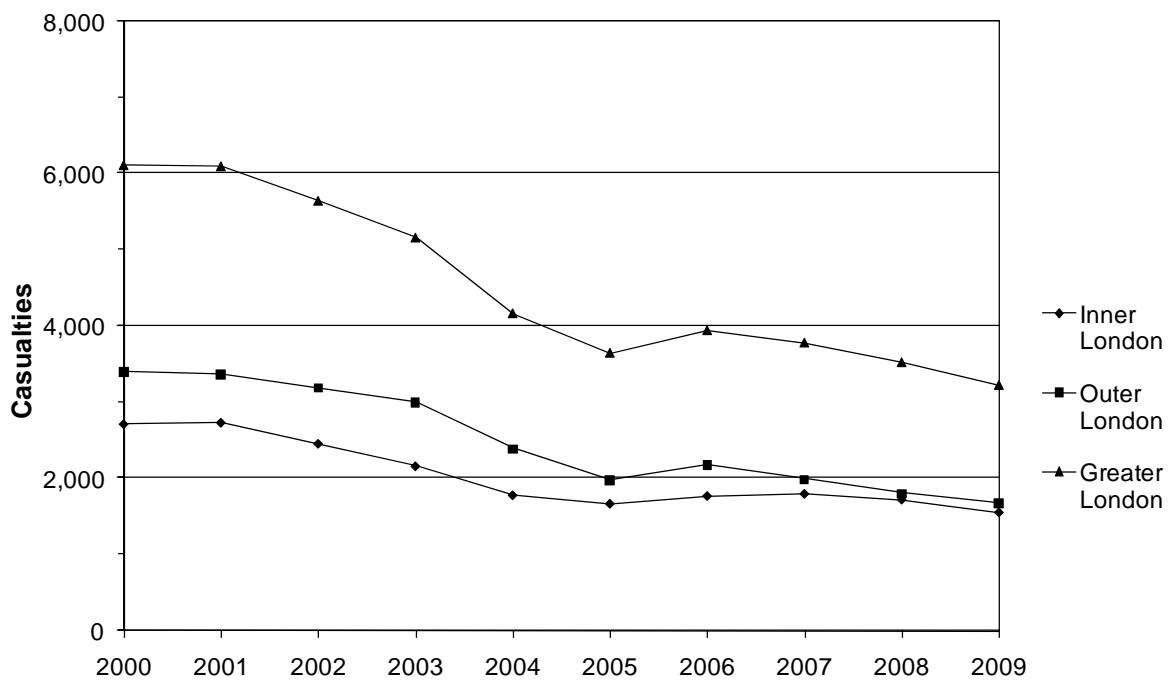


Figure 1.3 Pedestrian casualties in Greater London 2000-2009

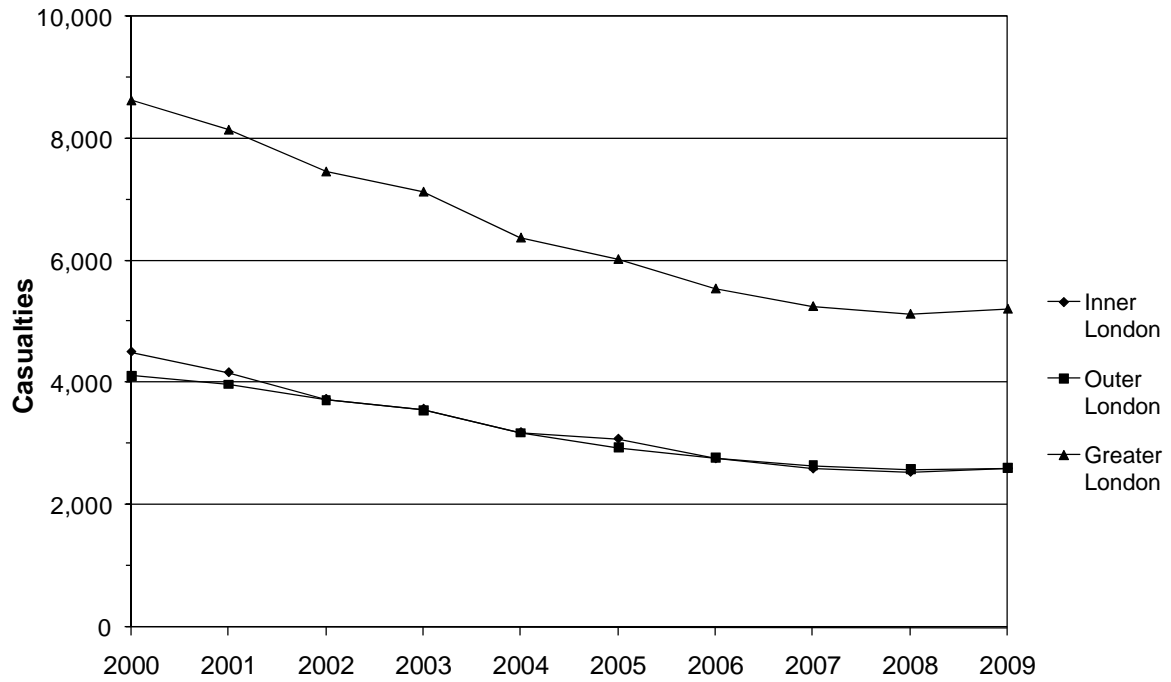


Figure 1.4: Pedal cyclist casualties in Greater London 2000-2009

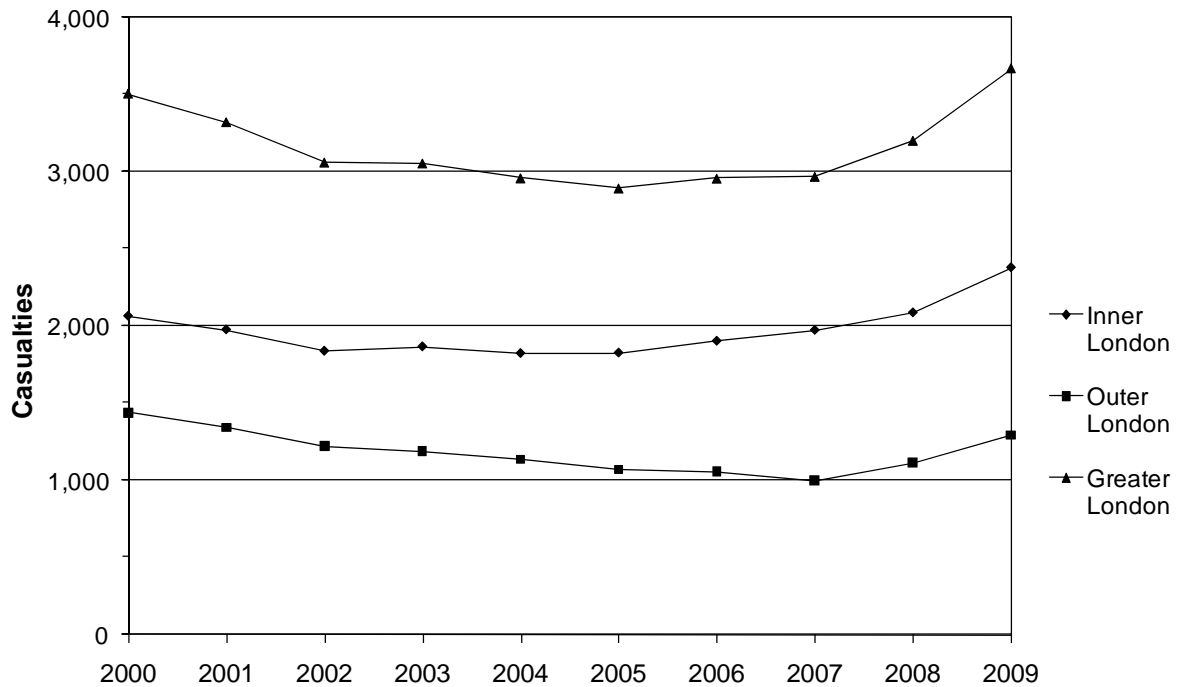


Figure 1.5: Powered two wheeler casualties in Greater London 2000-2009

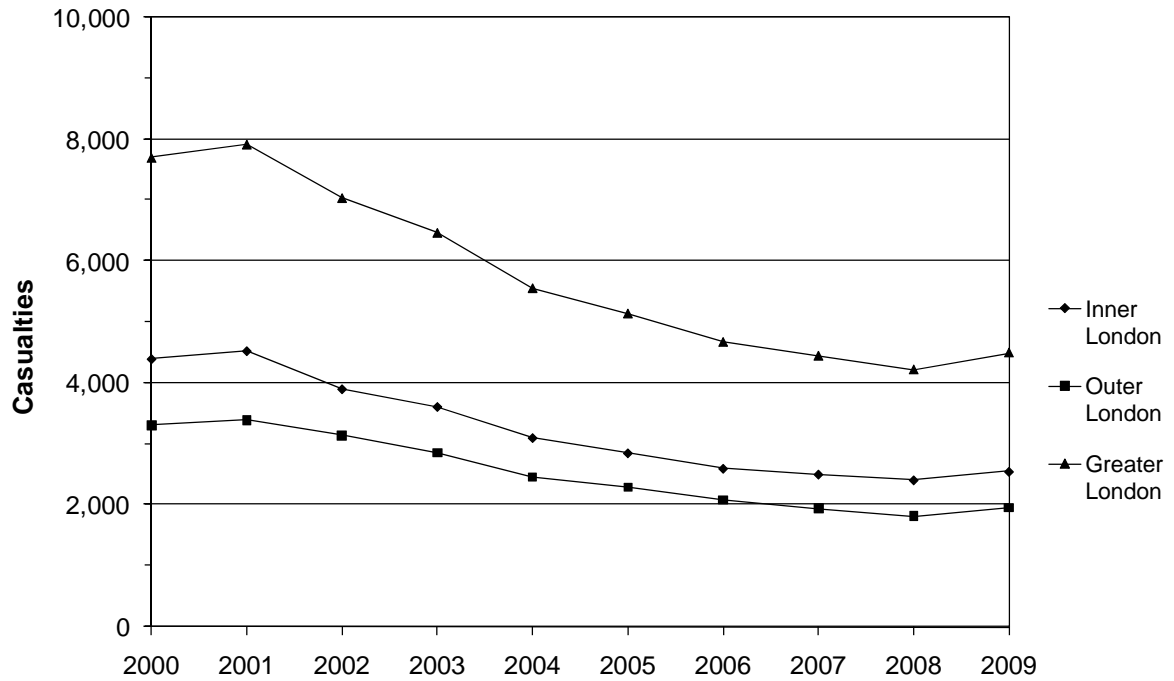


Figure 1.6: Car casualties in Greater London 2000-2009

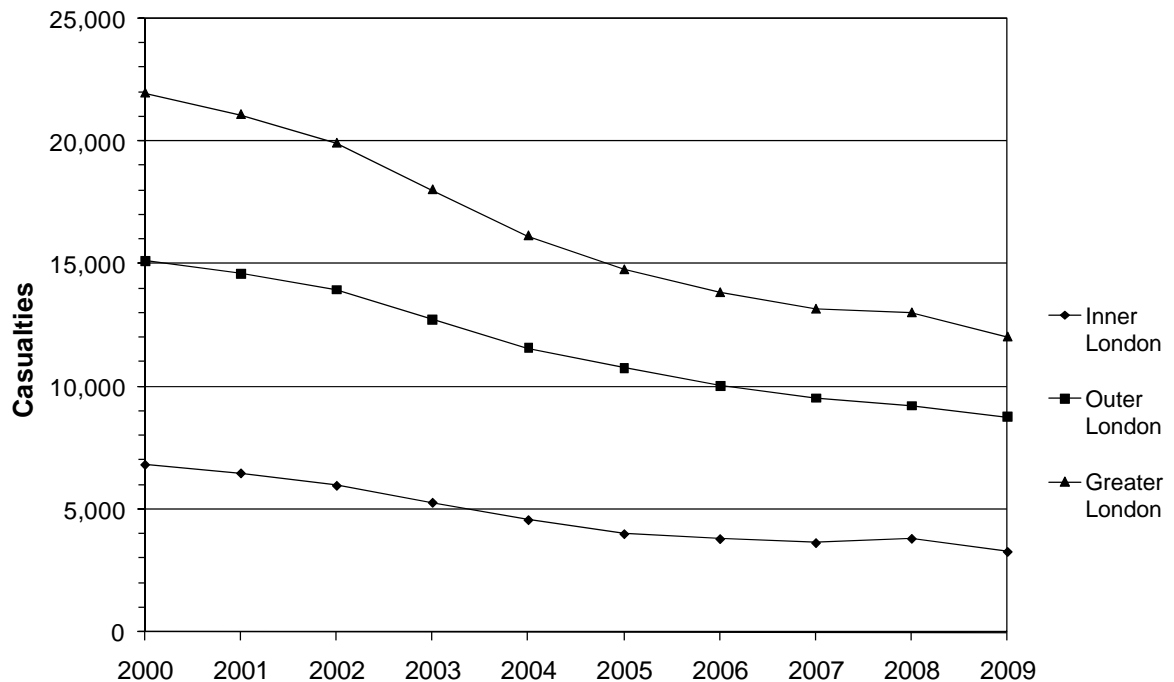


Figure 1.7: Child casualties in Greater London 2000-2009

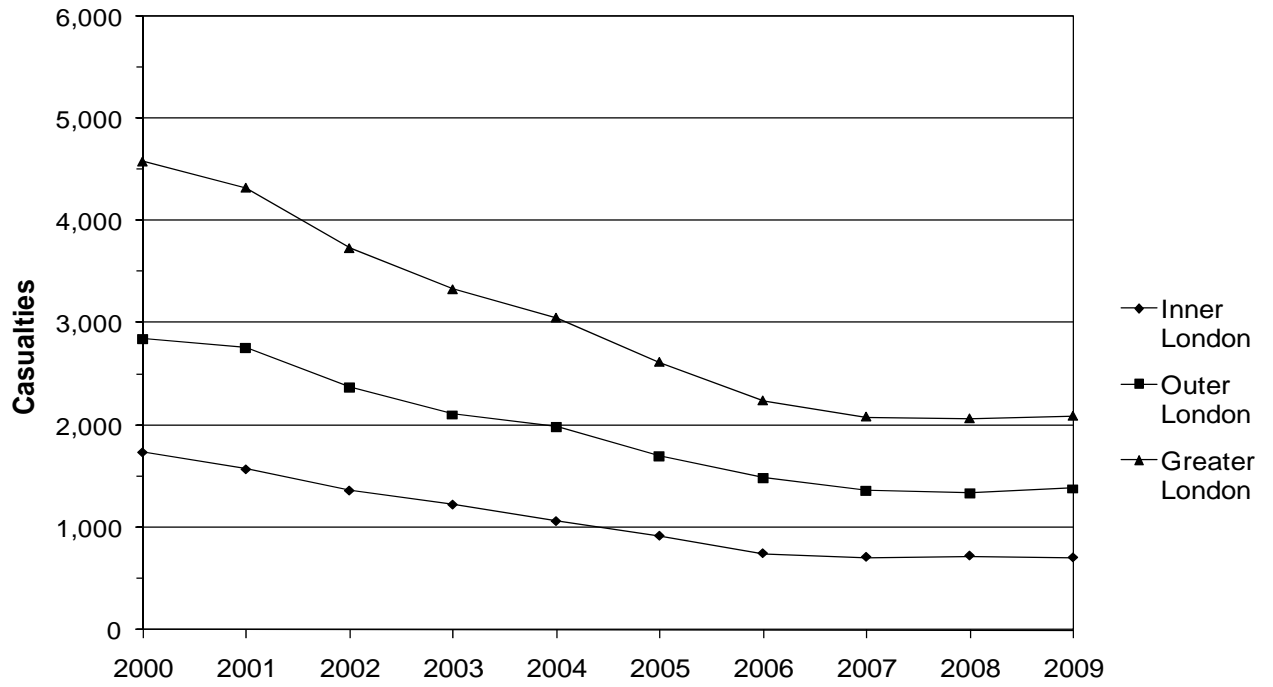


Figure 1.8: Fatal casualties in Greater London 1972-2009



Figure 1.9: Killed and seriously injured casualties in Greater London 1972-2009

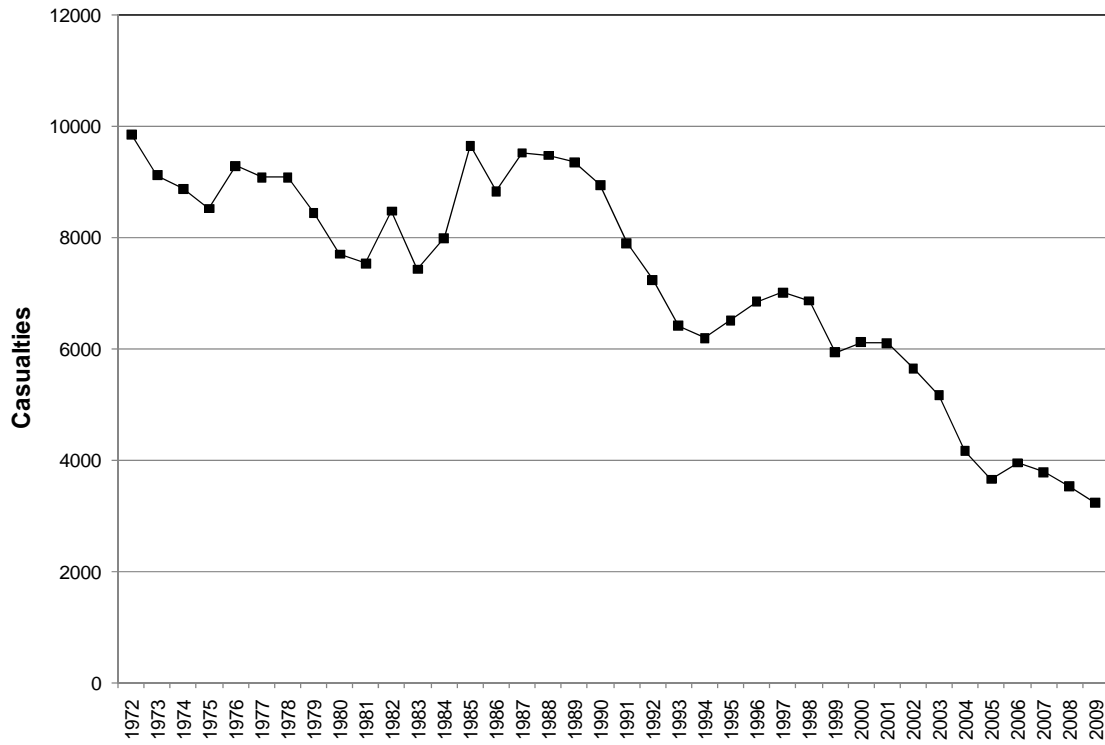
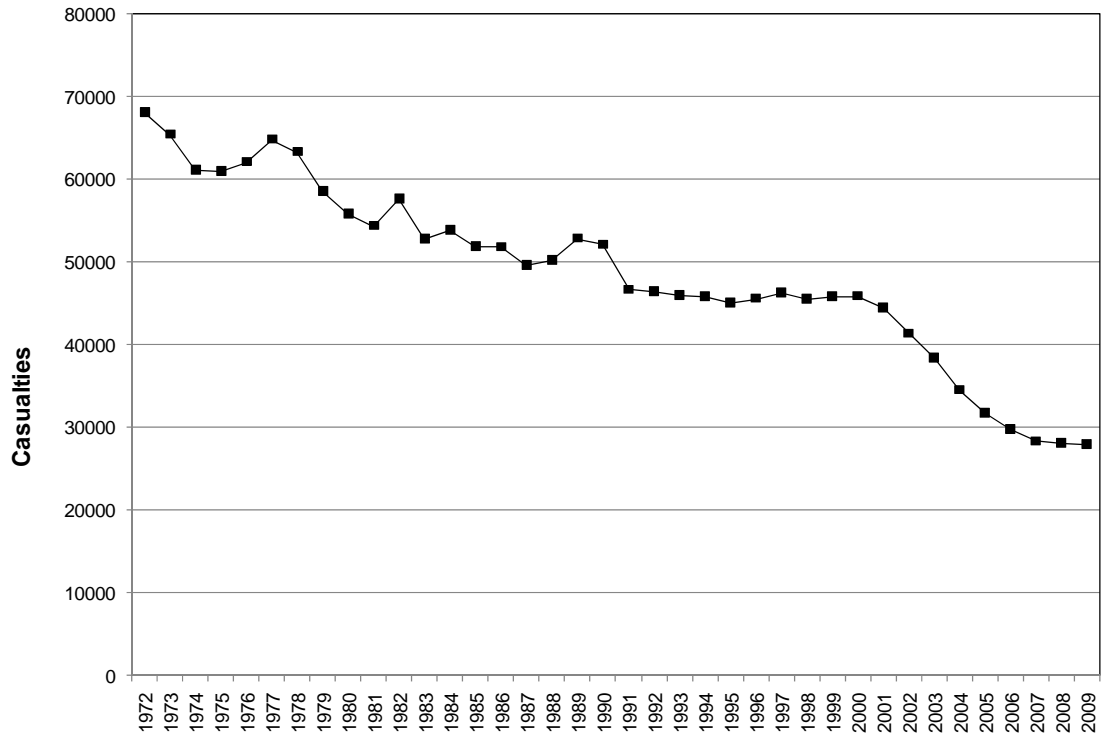


Figure 1.10: Total casualties in Greater London 1972-2009



2

Collision data 2009

Figure 2.1: Collisions in Greater London 2005-2009

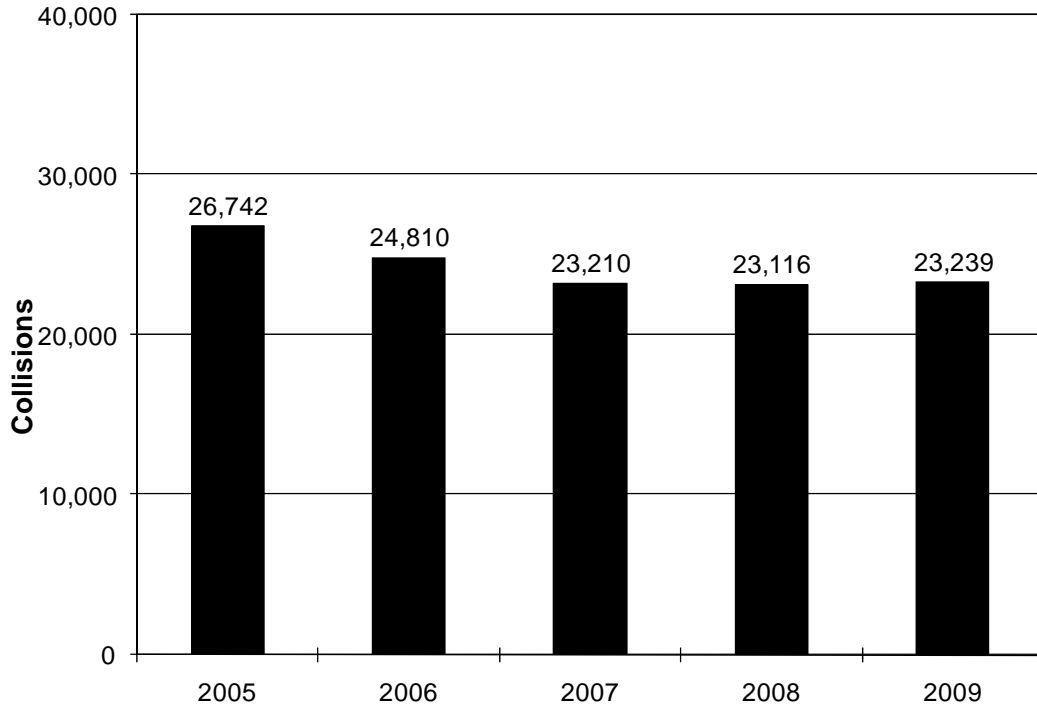


Figure 2.2: Pedestrian and non-pedestrian collisions in Greater London 2005-2009

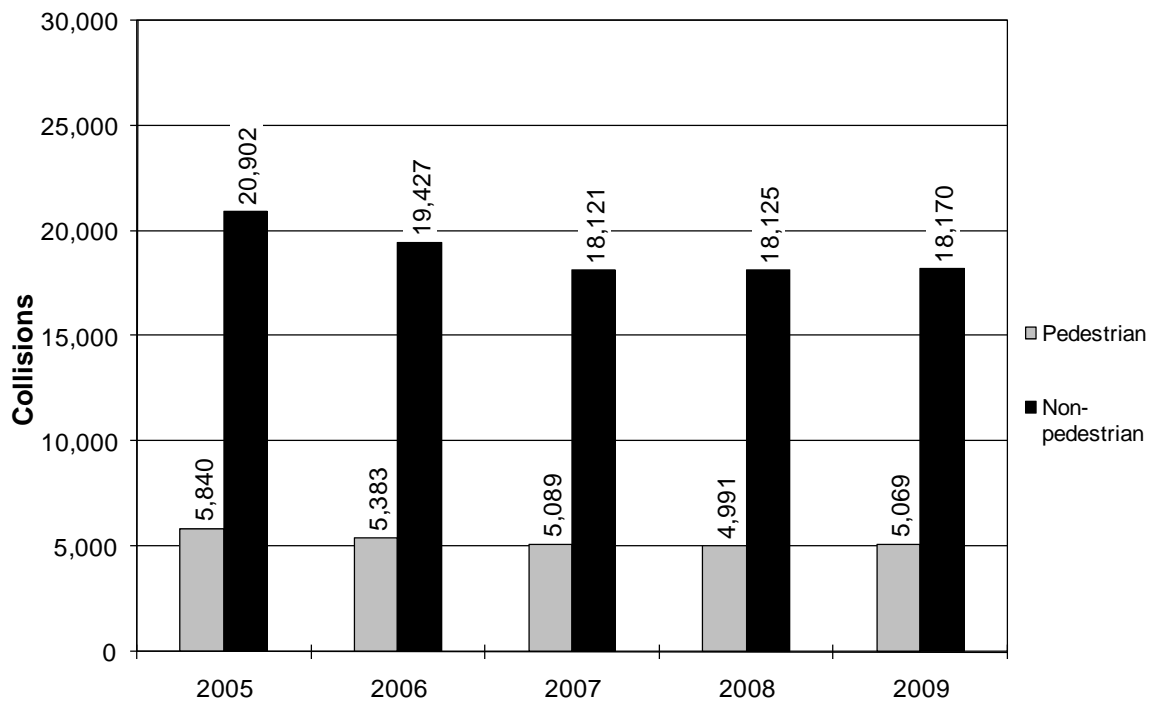


Table 2.3 Collisions in the Greater London area in 2009 tabulated by severity and borough

Borough	Fatal	Serious	Slight	Total
City of London	2	41	257	300
Westminster	15	237	1,138	1,390
Camden	5	133	677	815
Islington	3	73	646	722
Hackney	4	93	709	806
Tower Hamlets	7	91	674	772
Greenwich	8	75	622	705
Lewisham	7	99	724	830
Southwark	6	118	851	975
Lambeth	2	160	982	1,144
Wandsworth	6	109	697	812
Hammersmith and Fulham	3	84	550	637
Kensington and Chelsea	2	87	579	668
Total Inner	70	1,400	9,106	10,576
Waltham Forest	5	54	533	592
Redbridge	6	54	550	610
Havering	5	64	514	583
Barking and Dagenham	2	40	362	404
Newham	8	80	677	765
Bexley	5	67	413	485
Bromley	9	107	584	700
Croydon	5	93	807	905
Sutton	3	50	335	388
Merton	2	50	334	386
Kingston	2	45	331	378
Richmond	3	48	336	387
Hounslow	5	90	630	725
Hillingdon	5	77	650	732
Ealing	7	109	786	902
Brent	8	82	625	715
Harrow	2	39	360	401
Barnet	8	118	969	1,095
Haringey	6	82	668	756
Enfield	9	78	667	754
Total Outer	105	1,427	11,131	12,663
Greater London	175	2,827	20,237	23,239

Table 2.4 Collisions in the Greater London area in 2009 tabulated by borough, severity and month

00 City of London

Month	Fatal	Serious	Slight	Total
January	0	3	15	18
February	0	2	19	21
March	0	5	21	26
April	1	2	22	25
May	0	1	29	30
June	1	11	30	42
July	0	3	24	27
August	0	4	8	12
September	0	3	25	28
October	0	5	21	26
November	0	1	13	14
December	0	1	30	31
Total	2	41	257	300

01 Westminster

Month	Fatal	Serious	Slight	Total
January	0	16	59	75
February	2	24	80	106
March	2	25	88	115
April	4	18	81	103
May	0	19	104	123
June	1	21	98	120
July	0	20	104	124
August	0	15	79	94
September	1	15	113	129
October	2	27	127	156
November	3	21	119	143
December	0	16	86	102
Total	15	237	1,138	1,390

Table 2.4 Collisions in the Greater London area in 2009 tabulated by borough, severity and month

02 Camden

Month	Fatal	Serious	Slight	Total
January	0	9	39	48
February	0	4	43	47
March	0	7	58	65
April	0	9	57	66
May	0	13	69	82
June	1	15	67	83
July	0	16	50	66
August	0	5	48	53
September	1	15	65	81
October	1	12	57	70
November	1	19	70	90
December	1	9	54	64
Total	5	133	677	815

03 Islington

Month	Fatal	Serious	Slight	Total
January	0	4	44	48
February	0	7	39	46
March	0	5	58	63
April	1	12	43	56
May	0	6	60	66
June	0	12	49	61
July	0	4	61	65
August	0	7	49	56
September	2	4	59	65
October	0	7	64	71
November	0	1	76	77
December	0	4	44	48
Total	3	73	646	722

Table 2.4 Collisions in the Greater London area in 2009 tabulated by borough, severity and month

04 Hackney

Month	Fatal	Serious	Slight	Total
January	0	7	47	54
February	1	9	46	56
March	1	6	55	62
April	0	11	64	75
May	0	7	63	70
June	0	8	61	69
July	1	9	55	65
August	0	3	57	60
September	0	8	64	72
October	0	7	74	81
November	0	8	66	74
December	1	10	57	68
Total	4	93	709	806

05 Tower Hamlets

Month	Fatal	Serious	Slight	Total
January	3	5	48	56
February	1	4	38	43
March	0	8	56	64
April	1	9	44	54
May	0	5	61	66
June	0	8	61	69
July	0	8	63	71
August	0	3	56	59
September	1	10	79	90
October	1	13	57	71
November	0	4	70	74
December	0	14	41	55
Total	7	91	674	772

Table 2.4 Collisions in the Greater London area in 2009 tabulated by borough, severity and month

06 Greenwich

Month	Fatal	Serious	Slight	Total
January	2	9	42	53
February	0	5	31	36
March	0	5	57	62
April	1	6	47	54
May	1	14	58	73
June	0	2	58	60
July	0	3	56	59
August	0	8	63	71
September	0	8	45	53
October	1	4	53	58
November	1	8	64	73
December	2	3	48	53
Total	8	75	622	705

07 Lewisham

Month	Fatal	Serious	Slight	Total
January	1	11	53	65
February	0	4	35	39
March	2	6	69	77
April	0	13	48	61
May	1	4	50	55
June	0	13	69	82
July	0	10	55	65
August	0	8	61	69
September	1	9	77	87
October	1	4	59	64
November	1	8	75	84
December	0	9	73	82
Total	7	99	724	830

Table 2.4 Collisions in the Greater London area in 2009 tabulated by borough, severity and month

08 Southwark

Month	Fatal	Serious	Slight	Total
January	0	7	53	60
February	0	7	62	69
March	0	9	65	74
April	1	9	52	62
May	0	6	69	75
June	1	9	73	83
July	0	12	73	85
August	3	8	79	90
September	0	11	84	95
October	1	17	102	120
November	0	15	71	86
December	0	8	68	76
Total	6	118	851	975

09 Lambeth

Month	Fatal	Serious	Slight	Total
January	0	17	55	72
February	0	10	68	78
March	0	14	73	87
April	0	21	74	95
May	0	17	83	100
June	1	18	103	122
July	0	11	96	107
August	0	11	71	82
September	0	14	73	87
October	0	9	108	117
November	0	13	109	122
December	1	5	69	75
Total	2	160	982	1,144

Table 2.4 Collisions in the Greater London area in 2009 tabulated by borough, severity and month

10 Wandsworth

Month	Fatal	Serious	Slight	Total
January	0	11	47	58
February	1	9	45	55
March	0	9	65	74
April	0	11	50	61
May	0	4	61	65
June	1	5	63	69
July	1	9	59	69
August	0	9	49	58
September	0	10	69	79
October	0	12	69	81
November	1	11	69	81
December	2	9	51	62
Total	6	109	697	812

11 Hammersmith and Fulham

Month	Fatal	Serious	Slight	Total
January	0	3	42	45
February	0	6	34	40
March	1	7	50	58
April	0	10	52	62
May	0	6	41	47
June	1	7	54	62
July	0	6	50	56
August	0	9	49	58
September	0	6	42	48
October	0	8	50	58
November	0	5	46	51
December	1	11	40	52
Total	3	84	550	637

Table 2.4 Collisions in the Greater London area in 2009 tabulated by borough, severity and month

12 Kensington and Chelsea

Month	Fatal	Serious	Slight	Total
January	1	13	35	49
February	1	6	32	39
March	0	8	50	58
April	0	7	43	50
May	0	6	40	46
June	0	7	66	73
July	0	8	63	71
August	0	10	38	48
September	0	8	51	59
October	0	7	66	73
November	0	4	45	49
December	0	3	50	53
Total	2	87	579	668

13 Waltham Forest

Month	Fatal	Serious	Slight	Total
January	0	4	39	43
February	0	4	25	29
March	1	5	48	54
April	0	6	46	52
May	0	2	49	51
June	2	4	42	48
July	0	10	42	52
August	1	3	47	51
September	0	5	54	59
October	0	7	48	55
November	0	2	50	52
December	1	2	43	46
Total	5	54	533	592

Table 2.4 Collisions in the Greater London area in 2009 tabulated by borough, severity and month

14 Redbridge

Month	Fatal	Serious	Slight	Total
January	1	3	43	47
February	1	4	34	39
March	0	6	37	43
April	0	6	50	56
May	1	4	44	49
June	1	4	57	62
July	0	7	48	55
August	1	7	40	48
September	0	1	60	61
October	0	4	50	54
November	0	7	51	58
December	1	1	36	38
Total	6	54	550	610

15 Havering

Month	Fatal	Serious	Slight	Total
January	0	5	50	55
February	1	4	46	51
March	1	4	51	56
April	0	7	45	52
May	0	8	44	52
June	0	6	44	50
July	0	6	37	43
August	1	3	34	38
September	1	1	35	37
October	0	8	50	58
November	0	5	42	47
December	1	7	36	44
Total	5	64	514	583

Table 2.4 Collisions in the Greater London area in 2009 tabulated by borough, severity and month

16 Barking and Dagenham

Month	Fatal	Serious	Slight	Total
January	0	3	24	27
February	0	3	12	15
March	0	6	31	37
April	0	1	27	28
May	1	4	36	41
June	0	3	30	33
July	1	5	30	36
August	0	4	33	37
September	0	3	32	35
October	0	5	36	41
November	0	1	41	42
December	0	2	30	32
Total	2	40	362	404

17 Newham

Month	Fatal	Serious	Slight	Total
January	2	8	54	64
February	0	1	40	41
March	0	7	47	54
April	2	11	46	59
May	1	6	52	59
June	0	7	60	67
July	1	5	63	69
August	1	5	53	59
September	0	4	75	79
October	0	7	68	75
November	0	11	41	52
December	1	8	78	87
Total	8	80	677	765

Table 2.4 Collisions in the Greater London area in 2009 tabulated by borough, severity and month

18 Bexley

Month	Fatal	Serious	Slight	Total
January	1	5	28	34
February	0	5	21	26
March	0	4	30	34
April	0	4	32	36
May	1	3	23	27
June	0	7	39	46
July	0	2	38	40
August	1	7	33	41
September	1	6	41	48
October	0	5	50	55
November	0	8	39	47
December	1	11	39	51
Total	5	67	413	485

19 Bromley

Month	Fatal	Serious	Slight	Total
January	2	5	49	56
February	1	11	49	61
March	0	7	52	59
April	2	9	49	60
May	1	10	50	61
June	1	10	51	62
July	0	9	41	50
August	0	12	44	56
September	1	11	55	67
October	1	7	51	59
November	0	6	50	56
December	0	10	43	53
Total	9	107	584	700

Table 2.4 Collisions in the Greater London area in 2009 tabulated by borough, severity and month

20 Croydon

Month	Fatal	Serious	Slight	Total
January	1	7	62	70
February	0	5	50	55
March	1	6	55	62
April	0	11	57	68
May	1	12	80	93
June	1	5	58	64
July	0	6	73	79
August	1	10	70	81
September	0	8	67	75
October	0	7	72	79
November	0	10	81	91
December	0	6	82	88
Total	5	93	807	905

21 Sutton

Month	Fatal	Serious	Slight	Total
January	1	1	23	25
February	0	4	30	34
March	1	5	31	37
April	0	4	29	33
May	1	5	31	37
June	0	6	37	43
July	0	1	34	35
August	0	6	26	32
September	0	4	22	26
October	0	4	26	30
November	0	7	28	35
December	0	3	18	21
Total	3	50	335	388

Table 2.4 Collisions in the Greater London area in 2009 tabulated by borough, severity and month

22 Merton

Month	Fatal	Serious	Slight	Total
January	0	6	21	27
February	0	3	13	16
March	1	2	24	27
April	0	6	29	35
May	0	2	24	26
June	0	6	27	33
July	0	2	34	36
August	0	3	22	25
September	0	2	32	34
October	0	8	48	56
November	1	6	29	36
December	0	4	31	35
Total	2	50	334	386

23 Kingston

Month	Fatal	Serious	Slight	Total
January	0	3	11	14
February	0	1	20	21
March	0	6	30	36
April	1	1	33	35
May	0	5	28	33
June	0	3	27	30
July	0	2	27	29
August	0	4	26	30
September	0	9	21	30
October	1	7	28	36
November	0	4	48	52
December	0	0	32	32
Total	2	45	331	378

Table 2.4 Collisions in the Greater London area in 2009 tabulated by borough, severity and month

24 Richmond

Month	Fatal	Serious	Slight	Total
January	0	7	23	30
February	1	2	16	19
March	0	3	34	37
April	0	2	33	35
May	0	4	26	30
June	0	4	30	34
July	0	3	36	39
August	0	4	26	30
September	0	6	28	34
October	1	3	24	28
November	0	5	34	39
December	1	5	26	32
Total	3	48	336	387

25 Hounslow

Month	Fatal	Serious	Slight	Total
January	0	7	64	71
February	0	8	29	37
March	0	6	57	63
April	1	6	41	48
May	0	8	59	67
June	1	3	51	55
July	1	7	43	51
August	0	9	45	54
September	0	3	59	62
October	0	16	65	81
November	1	11	58	70
December	1	6	59	66
Total	5	90	630	725

Table 2.4 Collisions in the Greater London area in 2009 tabulated by borough, severity and month

26 Hillingdon

Month	Fatal	Serious	Slight	Total
January	0	10	50	60
February	0	3	48	51
March	0	7	57	64
April	0	3	53	56
May	1	13	73	87
June	2	5	49	56
July	1	6	50	57
August	1	4	30	35
September	0	7	61	68
October	0	10	60	70
November	0	5	58	63
December	0	4	61	65
Total	5	77	650	732

27 Ealing

Month	Fatal	Serious	Slight	Total
January	1	7	55	63
February	0	5	52	57
March	0	10	65	75
April	1	5	71	77
May	0	8	61	69
June	1	13	79	93
July	1	12	79	92
August	1	8	55	64
September	2	11	61	74
October	0	9	76	85
November	0	15	75	90
December	0	6	57	63
Total	7	109	786	902

Table 2.4 Collisions in the Greater London area in 2009 tabulated by borough, severity and month

28 Brent

Month	Fatal	Serious	Slight	Total
January	0	11	32	43
February	1	4	34	39
March	0	7	59	66
April	0	9	66	75
May	1	2	57	60
June	2	10	46	58
July	0	5	45	50
August	2	4	46	52
September	0	7	70	77
October	1	8	55	64
November	1	7	64	72
December	0	8	51	59
Total	8	82	625	715

29 Harrow

Month	Fatal	Serious	Slight	Total
January	0	6	31	37
February	1	3	17	21
March	0	3	26	29
April	0	5	32	37
May	0	5	31	36
June	0	2	46	48
July	0	1	35	36
August	0	2	16	18
September	0	1	30	31
October	0	4	37	41
November	1	4	36	41
December	0	3	23	26
Total	2	39	360	401

Table 2.4 Collisions in the Greater London area in 2009 tabulated by borough, severity and month

30 Barnet

Month	Fatal	Serious	Slight	Total
January	1	12	66	79
February	0	8	47	55
March	0	8	83	91
April	1	10	90	101
May	0	12	74	86
June	0	9	91	100
July	1	8	94	103
August	0	6	69	75
September	2	11	81	94
October	0	7	79	86
November	1	14	110	125
December	2	13	85	100
Total	8	118	969	1,095

31 Haringey

Month	Fatal	Serious	Slight	Total
January	0	4	47	51
February	0	2	36	38
March	1	7	70	78
April	1	4	61	66
May	0	7	51	58
June	1	5	62	68
July	0	14	55	69
August	0	9	59	68
September	1	7	68	76
October	1	7	63	71
November	0	11	56	67
December	1	5	40	46
Total	6	82	668	756

Table 2.4 Collisions in the Greater London area in 2009 tabulated by borough, severity and month

32 Enfield

Month	Fatal	Serious	Slight	Total
January	0	6	41	47
February	0	2	38	40
March	0	7	52	59
April	1	10	41	52
May	0	3	48	51
June	2	8	63	73
July	1	4	57	62
August	1	3	66	70
September	1	9	50	60
October	1	9	75	85
November	1	8	86	95
December	1	9	50	60
Total	9	78	667	754

Table 2.5 Collisions in the Greater London area in 2009 tabulated by severity and month

Greater London total

Month	Fatal	Serious	Slight	Total
January	17	235	1,392	1,644
February	12	179	1,229	1,420
March	12	230	1,704	1,946
April	19	258	1,608	1,885
May	11	231	1,729	1,971
June	21	256	1,841	2,118
July	9	234	1,770	2,013
August	14	213	1,547	1,774
September	15	237	1,848	2,100
October	13	274	1,968	2,255
November	13	265	1,970	2,248
December	19	215	1,631	1,865
Total	175	2,827	20,237	23,239

Table 2.6 Collisions in the Greater London area in 2009 tabulated by junction detail and borough

Borough	Round- about	Mini- roundabout	T or staggered	Slip road	Cross- road	Multiple	Private drive or entrance	Other 20m of junct.	Not within 20m of junct.	Total
City of London	13	0	159	1	58	11	6	0	52	300
Westminster	23	6	556	3	470	16	8	3	305	1,390
Camden	1	2	393	2	240	9	14	4	150	815
Islington	21	0	373	2	165	8	8	2	143	722
Hackney	11	4	454	6	168	19	13	9	122	806
Tower Hamlets	26	4	432	8	136	6	17	7	136	772
Greenwich	53	10	267	8	98	5	10	0	254	705
Lewisham	21	12	408	0	129	1	27	0	232	830
Southwark	61	6	498	2	148	3	24	2	231	975
Lambeth	20	3	607	1	201	22	19	4	267	1,144
Wandsworth	21	13	428	4	153	18	28	1	146	812
Hammersmith and Fulham	35	7	316	5	95	16	33	3	127	637
Kensington and Chelsea	12	7	335	1	166	7	6	0	134	668
Total Inner	318	74	5,226	43	2,227	141	213	35	2,299	10,576
Waltham Forest	37	10	318	2	73	1	12	4	135	592
Redbridge	55	19	265	5	86	1	19	3	157	610
Havering	58	22	237	8	84	3	22	4	145	583
Barking and Dagenham	35	5	144	3	89	7	13	2	106	404
Newham	41	11	408	4	105	12	6	11	167	765
Bexley	48	18	175	2	48	0	16	0	178	485
Bromley	28	36	314	1	104	3	5	0	209	700
Croydon	36	7	447	0	123	12	10	0	270	905
Sutton	13	6	180	0	66	1	12	0	110	388
Merton	24	3	172	2	59	10	25	1	90	386
Kingston	37	8	169	2	39	6	18	0	99	378
Richmond	39	10	160	0	43	7	14	2	112	387
Hounslow	75	11	261	12	122	9	30	0	205	725
Hillingdon	67	11	217	27	82	6	48	5	269	732
Ealing	46	5	408	33	110	14	43	1	242	902
Brent	38	6	343	6	76	5	24	0	217	715
Harrow	30	6	161	3	52	2	18	2	127	401
Barnet	84	11	426	14	169	12	31	4	344	1,095
Haringey	16	11	345	2	130	7	26	2	217	756
Enfield	39	10	280	13	108	7	29	4	264	754
Total Outer	846	226	5,430	139	1,768	125	421	45	3,663	12,663
Greater London	1,164	300	10,656	182	3,995	266	634	80	5,962	23,239

Figure 2.7a: Fatal collisions 2005-2009

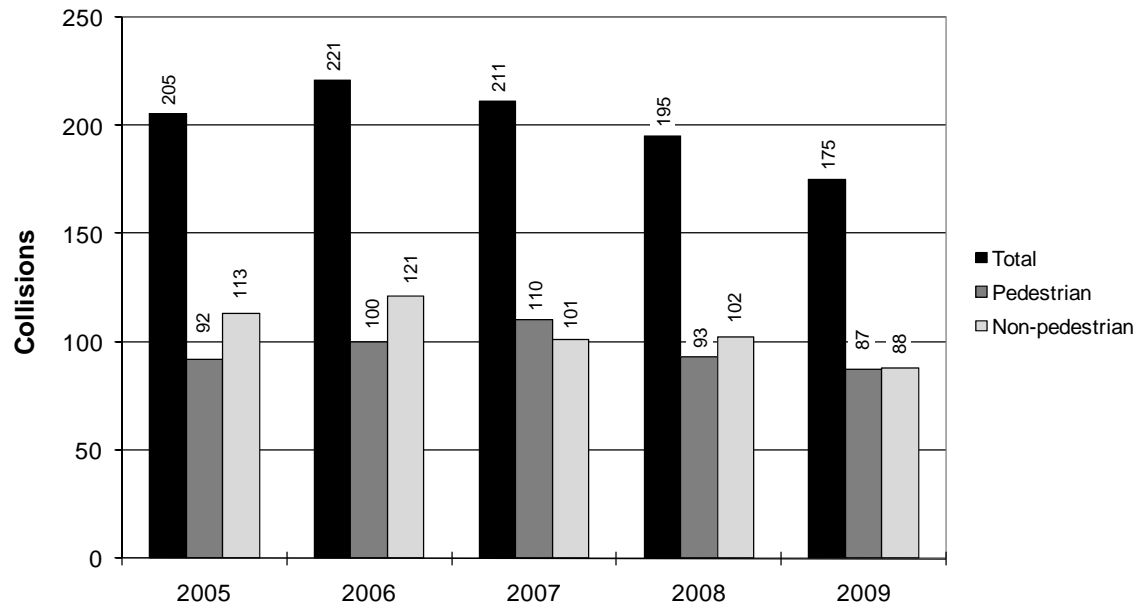


Figure 2.7b: Serious collisions 2005-2009

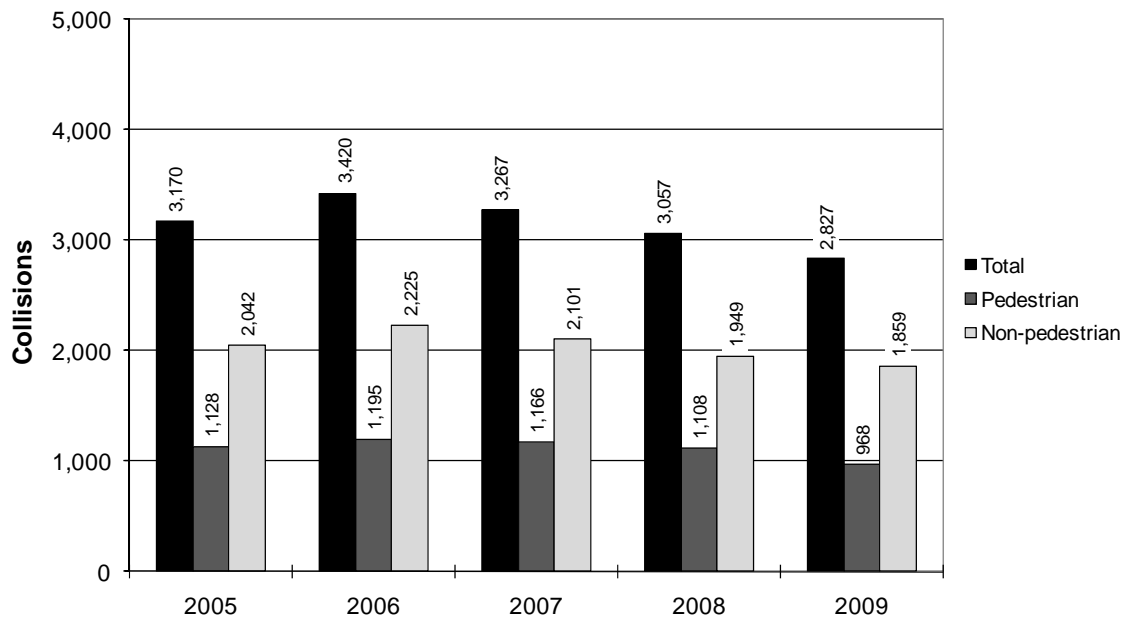


Table 2.8 Collisions at junctions in the Greater London area in 2009 tabulated by junction control and borough

Borough	Authorised person	Automatic traffic signal	Stop sign	Give Way/ Uncontrolled	Not at junction	Total
City of London	0	107	0	141	52	300
Westminster	0	522	2	561	305	1,390
Camden	2	276	2	385	150	815
Islington	0	193	0	386	143	722
Hackney	3	184	1	496	122	806
Tower Hamlets	1	203	4	428	136	772
Greenwich	0	113	1	337	254	705
Lewisham	0	158	1	439	232	830
Southwark	0	216	1	527	231	975
Lambeth	0	323	0	554	267	1,144
Wandsworth	0	162	2	502	146	812
Hammersmith and Fulham	0	126	0	384	127	637
Kensington and Chelsea	1	171	0	362	134	668
Total Inner	7	2,754	14	5,502	2,299	10,576
Waltham Forest	1	92	1	363	135	592
Redbridge	1	85	0	367	157	610
Havering	2	88	1	347	145	583
Barking and Dagenham	0	77	0	221	106	404
Newham	0	139	2	457	167	765
Bexley	0	51	0	256	178	485
Bromley	0	87	0	404	209	700
Croydon	0	124	1	510	270	905
Sutton	0	55	0	223	110	388
Merton	0	75	0	221	90	386
Kingston	0	58	1	220	99	378
Richmond	0	47	0	228	112	387
Hounslow	1	187	0	332	205	725
Hillingdon	0	96	0	367	269	732
Ealing	0	120	2	538	242	902
Brent	1	92	1	404	217	715
Harrow	0	46	0	228	127	401
Barnet	0	182	2	567	344	1,095
Haringey	2	115	0	422	217	756
Enfield	1	118	2	369	264	754
Total Outer	9	1,934	13	7,044	3,663	12,663
Greater London	16	4,688	27	12,546	5,962	23,239

Table 2.9 Collisions in the Greater London area in 2009 tabulated by weather and borough

Borough	Raining	Snowing	Fog	Other	Unknown	Total
City of London	34	1	0	265	0	300
Westminster	155	11	0	1,218	6	1,390
Camden	99	9	0	700	7	815
Islington	71	3	0	639	9	722
Hackney	91	6	0	709	0	806
Tower Hamlets	85	6	2	677	2	772
Greenwich	69	5	1	628	2	705
Lewisham	78	4	0	740	8	830
Southwark	110	9	0	856	0	975
Lambeth	115	6	0	1,018	5	1,144
Wandsworth	89	3	0	720	0	812
Hammersmith and Fulham	65	5	0	566	1	637
Kensington and Chelsea	67	4	0	597	0	668
Total Inner	1,128	72	3	9,333	40	10,576
Waltham Forest	64	6	0	518	4	592
Redbridge	76	8	1	522	3	610
Havering	61	10	3	509	0	583
Barking and Dagenham	34	3	0	367	0	404
Newham	77	7	1	678	2	765
Bexley	71	5	2	407	0	485
Bromley	84	13	3	598	2	700
Croydon	99	13	4	785	4	905
Sutton	30	0	2	347	9	388
Merton	43	1	0	342	0	386
Kingston	33	2	0	343	0	378
Richmond	32	3	0	352	0	387
Hounslow	73	9	2	641	0	725
Hillingdon	91	5	0	632	4	732
Ealing	88	8	0	806	0	902
Brent	69	7	0	631	8	715
Harrow	52	3	1	341	4	401
Barnet	136	17	4	934	4	1,095
Haringey	73	3	1	678	1	756
Enfield	102	8	0	632	12	754
Total Outer	1,388	131	24	11,063	57	12,663
Greater London	2,516	203	27	20,396	97	23,239

Table 2.10 Collisions involving a parked vehicle in the Greater London area in 2009 tabulated by severity and borough

Borough	Fatal	Serious	Slight	Total
City of London	0	3	8	11
Westminster	0	16	62	78
Camden	0	5	40	45
Islington	1	4	37	42
Hackney	1	4	39	44
Tower Hamlets	0	4	26	30
Greenwich	0	3	32	35
Lewisham	1	10	43	54
Southwark	0	4	36	40
Lambeth	0	5	57	62
Wandsworth	0	8	43	51
Hammersmith and Fulham	0	3	31	34
Kensington and Chelsea	0	5	48	53
Total Inner	3	74	502	579
Waltham Forest	1	5	29	35
Redbridge	0	4	33	37
Havering	0	4	22	26
Barking and Dagenham	0	2	14	16
Newham	1	1	29	31
Bexley	0	8	23	31
Bromley	2	6	38	46
Croydon	0	4	56	60
Sutton	0	2	25	27
Merton	0	6	31	37
Kingston	0	5	21	26
Richmond	0	2	26	28
Hounslow	0	6	18	24
Hillingdon	1	3	31	35
Ealing	1	9	39	49
Brent	1	8	38	47
Harrow	0	4	35	39
Barnet	1	7	73	81
Haringey	1	5	31	37
Enfield	2	3	41	46
Total Outer	11	94	653	758
Greater London	14	168	1,155	1,337

Table 2.11 Collisions in the Greater London area in 2009 tabulated by road surface condition and borough

Borough	Dry	Wet/Damp	Snow	Frost/Ice	Flood	Oil/diesel¹	Mud¹	Total
City of London	243	56	1	0	0	2	0	300
Westminster	1,114	256	9	11	0	7	0	1,390
Camden	626	174	6	9	0	1	0	815
Islington	615	100	2	5	0	0	0	722
Hackney	652	144	6	4	0	2	0	806
Tower Hamlets	623	142	4	3	0	1	0	772
Greenwich	545	141	5	14	0	2	0	705
Lewisham	653	165	2	10	0	1	0	830
Southwark	764	201	6	4	0	1	0	975
Lambeth	901	233	4	6	0	3	0	1,144
Wandsworth	649	150	3	10	0	2	0	812
Hammersmith and Fulham	512	115	4	6	0	0	0	637
Kensington and Chelsea	554	109	2	3	0	0	0	668
Total Inner	8,451	1,986	54	85	0	22	0	10,576
Waltham Forest	473	106	5	7	1	3	0	592
Redbridge	474	122	5	7	2	0	0	610
Havering	440	121	10	11	1	0	0	583
Barking and Dagenham	332	67	2	2	1	1	0	404
Newham	606	142	5	12	0	0	0	765
Bexley	357	116	6	5	1	1	0	485
Bromley	515	160	12	13	0	3	0	700
Croydon	689	189	10	17	0	4	0	905
Sutton	312	68	0	7	1	0	0	388
Merton	309	73	1	3	0	0	0	386
Kingston	307	64	2	5	0	0	0	378
Richmond	319	60	3	5	0	0	0	387
Hounslow	565	146	3	11	0	1	0	725
Hillingdon	558	157	4	12	1	0	0	732
Ealing	715	163	6	18	0	1	1	902
Brent	587	117	6	5	0	0	0	715
Harrow	297	98	2	4	0	0	0	401
Barnet	832	223	12	27	1	1	0	1,095
Haringey	619	129	1	6	1	0	0	756
Enfield	557	184	6	7	0	0	0	754
Total Outer	9,863	2,505	101	184	10	15	1	12,663
Greater London	18,314	4,491	155	269	10	37	1	23,239

¹ Note that data for Oil/Diesel and Mud are obtained from the 'Special conditions at site' variable and consequently are not included in the Total column to avoid double counting of collisions.

Figure 2.12: Collisions on a wet road surface 2005-2009

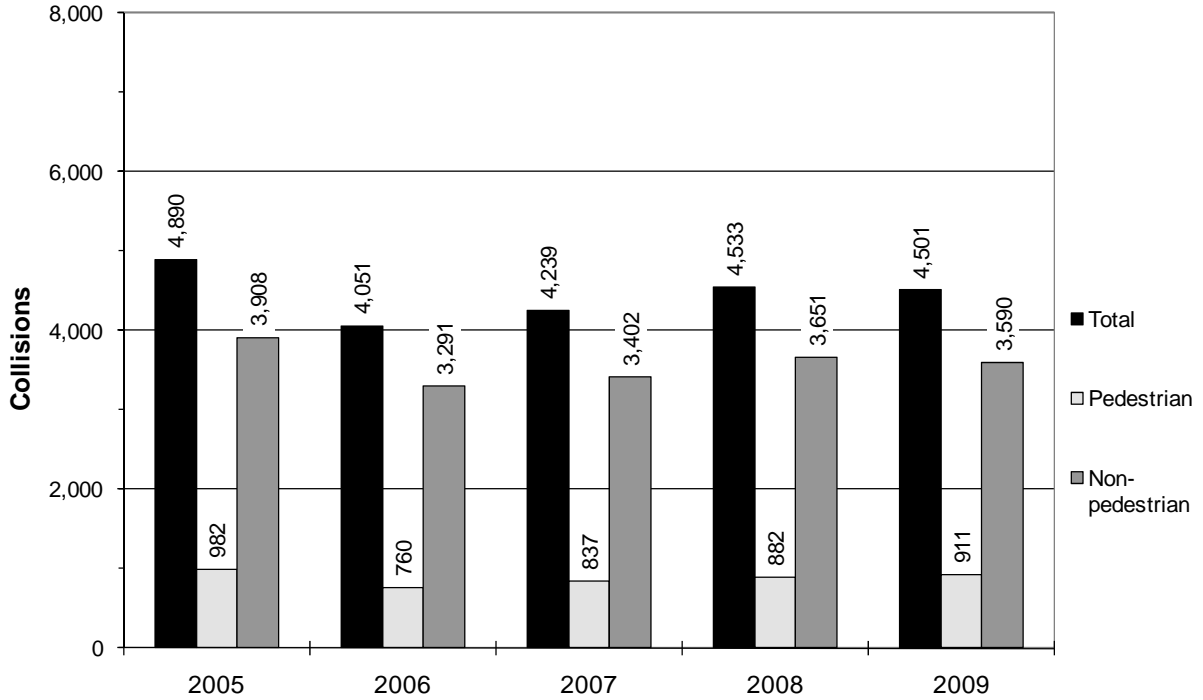


Figure 2.13: Collisions in the dark 2005-2009

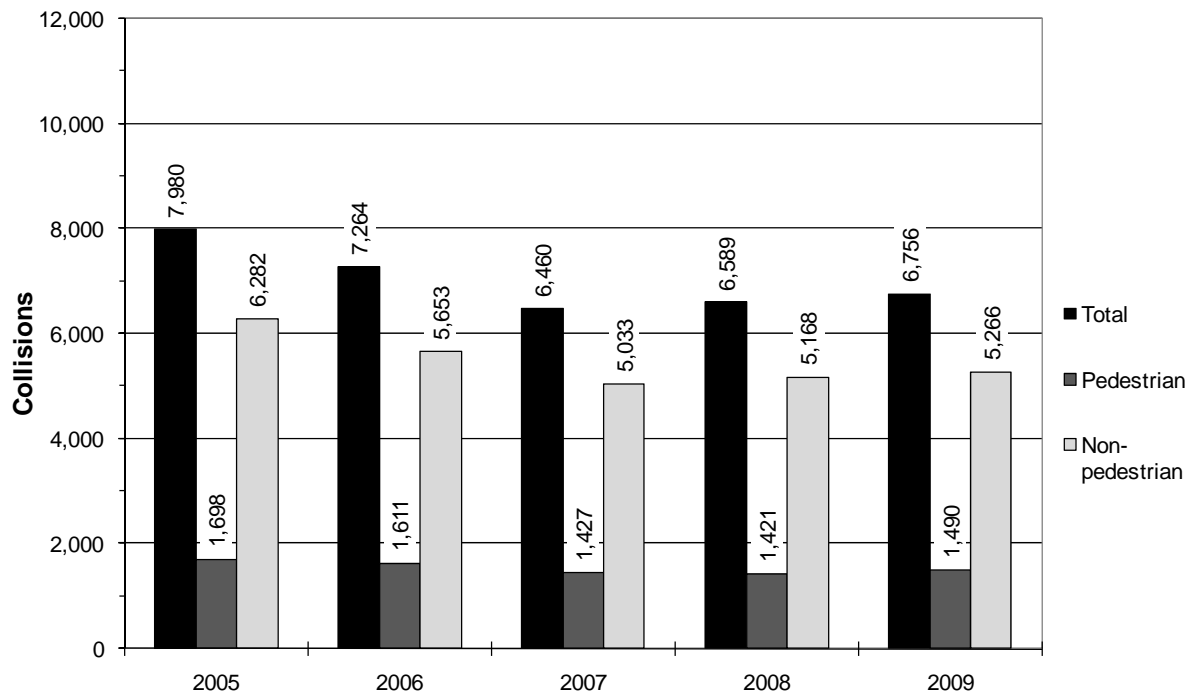


Table 2.14 Collisions in the Greater London area in 2009 tabulated by road class and borough

Borough	Motorway	A	B	C	Unclassified	Total
City of London	0	180	8	107	5	300
Westminster	0	911	106	192	181	1,390
Camden	0	525	130	77	83	815
Islington	0	556	39	53	74	722
Hackney	0	533	64	114	95	806
Tower Hamlets	0	547	118	34	73	772
Greenwich	0	497	46	60	102	705
Lewisham	0	547	76	80	127	830
Southwark	0	703	87	62	123	975
Lambeth	0	877	69	73	125	1,144
Wandsworth	0	589	40	70	113	812
Hammersmith and Fulham	0	485	42	38	72	637
Kensington and Chelsea	0	423	74	80	91	668
Total Inner	0	7,373	899	1,040	1,264	10,576
Waltham Forest	0	393	52	54	93	592
Redbridge	6	323	29	108	144	610
Havering	26	230	44	181	102	583
Barking and Dagenham	0	231	10	98	65	404
Newham	0	521	67	42	135	765
Bexley	0	260	28	94	103	485
Bromley	1	371	59	109	160	700
Croydon	0	503	103	137	162	905
Sutton	0	150	114	38	86	388
Merton	0	229	58	45	54	386
Kingston	0	240	30	42	66	378
Richmond	0	283	49	18	37	387
Hounslow	42	493	48	58	84	725
Hillingdon	52	329	52	181	118	732
Ealing	0	562	109	114	117	902
Brent	0	479	42	93	101	715
Harrow	0	186	11	128	76	401
Barnet	27	710	48	102	208	1,095
Haringey	0	505	89	63	99	756
Enfield	37	453	30	109	125	754
Total Outer	191	7,451	1,072	1,814	2,135	12,663
Greater London	191	14,824	1,971	2,854	3,399	23,239

Note: Road Class is allocated according to the category of the road at which the collisions occurred. For collisions occurring at a junction where the collision cannot be clearly allocated to a particular road the class of the major road is chosen.

Table 2.15 Collisions involving a pedestrian in the Greater London area in 2009 tabulated by severity and borough

Borough	Fatal	Serious	Slight	Total
City of London	1	14	69	84
Westminster	10	89	311	410
Camden	4	64	202	270
Islington	1	28	140	169
Hackney	4	27	134	165
Tower Hamlets	3	41	147	191
Greenwich	3	20	107	130
Lewisham	3	34	153	190
Southwark	3	47	156	206
Lambeth	1	50	194	245
Wandsworth	5	38	123	166
Hammersmith and Fulham	1	26	113	140
Kensington and Chelsea	0	29	141	170
Total Inner	39	507	1,990	2,536
Waltham Forest	1	16	102	119
Redbridge	3	16	101	120
Havering	1	16	67	84
Barking and Dagenham	0	10	60	70
Newham	4	47	142	193
Bexley	2	18	61	81
Bromley	0	28	76	104
Croydon	4	30	165	199
Sutton	0	17	58	75
Merton	2	18	64	84
Kingston	1	9	62	72
Richmond	3	11	47	61
Hounslow	3	21	95	119
Hillingdon	1	17	101	119
Ealing	5	34	130	169
Brent	5	30	165	200
Harrow	1	16	77	94
Barnet	5	40	166	211
Haringey	4	38	151	193
Enfield	3	29	134	166
Total Outer	48	461	2,024	2,533
Greater London	87	968	4,014	5,069

Table 2.16 Pedestrian collisions in the Greater London area in 2009 tabulated by month and borough

Borough	Jan.	Feb.	March	April	May	June	July	August	Sept.	Oct.	Nov.	Dec.	Total
City of London	9	8	6	7	10	6	6	3	6	4	4	15	84
Westminster	26	41	40	23	34	30	28	22	41	45	40	40	410
Camden	17	17	17	16	32	22	23	18	31	21	33	23	270
Islington	18	11	16	13	11	13	10	8	18	22	17	12	169
Hackney	13	15	16	13	13	18	10	10	10	11	21	15	165
Tower Hamlets	14	14	19	11	14	17	18	8	14	21	22	19	191
Greenwich	6	10	19	9	13	9	8	12	9	11	14	10	130
Lewisham	17	10	19	13	9	24	12	12	13	16	16	29	190
Southwark	16	22	17	19	19	14	11	11	16	23	22	16	206
Lambeth	16	17	21	15	21	26	22	15	25	28	22	17	245
Wandsworth	14	9	15	13	9	10	13	10	18	19	25	11	166
Hammersmith and Fulham	10	11	14	16	16	15	10	9	7	8	14	10	140
Kensington and Chelsea	14	11	14	10	11	11	13	17	15	23	13	18	170
Total Inner	190	196	233	178	212	215	184	155	223	252	263	235	2,536
Waltham Forest	9	6	16	13	10	8	11	11	10	8	11	6	119
Redbridge	5	5	12	10	13	14	8	8	7	14	12	12	120
Havering	7	8	10	5	7	6	5	5	10	6	9	6	84
Barking and Dagenham	4	4	9	3	11	2	5	6	7	8	3	8	70
Newham	15	10	11	18	14	16	14	15	16	22	20	22	193
Bexley	6	10	6	8	3	4	6	3	11	7	7	10	81
Bromley	10	10	10	6	10	6	3	10	11	11	9	8	104
Croydon	18	15	21	16	19	13	17	13	18	14	20	15	199
Sutton	6	12	6	7	8	5	8	4	3	7	3	6	75
Merton	6	4	9	6	3	5	2	6	8	16	10	9	84
Kingston	3	5	10	5	9	5	1	6	6	6	8	8	72
Richmond	4	1	8	5	1	5	10	1	5	7	6	8	61
Hounslow	7	7	12	13	10	5	8	9	9	11	12	16	119
Hillingdon	9	10	10	6	11	5	14	2	11	12	16	13	119
Ealing	11	13	14	12	13	20	15	8	14	13	22	14	169
Brent	16	11	11	22	18	11	11	9	23	24	24	20	200
Harrow	12	4	9	6	12	11	5	2	8	6	13	6	94
Barnet	13	12	18	18	20	19	22	12	19	17	23	18	211
Haringey	11	11	17	11	18	19	23	14	23	14	16	16	193
Enfield	12	5	20	10	12	19	10	12	12	16	22	16	166
Total Outer	184	163	239	200	222	198	198	156	231	239	266	237	2,533
Greater London	374	359	472	378	434	413	382	311	454	491	529	472	5,069

Table 2.17 Collisions involving a pedestrian crossing the road in the Greater London area in 2009 tabulated by pedestrian action and borough

Borough	Crossing road at pedestrian crossing	Crossing within 50m of pedestrian crossing	Crossing road elsewhere	Total
City of London	19	15	35	69
Westminster	119	75	136	330
Camden	81	54	95	230
Islington	54	33	59	146
Hackney	30	16	82	128
Tower Hamlets	44	29	79	152
Greenwich	24	11	75	110
Lewisham	28	32	110	170
Southwark	50	32	95	177
Lambeth	36	44	127	207
Wandsworth	27	36	70	133
Hammersmith and Fulham	44	30	35	109
Kensington and Chelsea	47	38	52	137
Total Inner	603	445	1,050	2,098
Waltham Forest	23	22	56	101
Redbridge	13	8	68	89
Havering	12	7	40	59
Barking and Dagenham	14	6	41	61
Newham	39	21	96	156
Bexley	9	9	49	67
Bromley	10	13	56	79
Croydon	39	24	106	169
Sutton	10	8	42	60
Merton	15	12	31	58
Kingston	11	6	29	46
Richmond	8	9	31	48
Hounslow	23	18	46	87
Hillingdon	13	9	73	95
Ealing	28	19	88	135
Brent	43	19	100	162
Harrow	14	11	50	75
Barnet	41	20	104	165
Haringey	44	35	80	159
Enfield	36	19	77	132
Total Outer	445	295	1,263	2,003
Greater London	1,048	740	2,313	4,101

Table 2.18 Collisions in the Greater London area in 2009 tabulated by day of week and time of day

Time of day	Monday	Tuesday	Wednesday	Thursday	Friday	Saturday	Sunday	Total
00.00-00.59	37	46	39	51	70	117	97	457
01.00-01.59	21	21	25	29	35	57	81	269
02.00-02.59	9	9	12	16	22	52	63	183
03.00-03.59	9	12	9	26	14	45	70	185
04.00-04.59	16	7	12	19	15	47	37	153
05.00-05.59	31	26	21	31	26	28	40	203
06.00-06.59	67	68	70	66	68	48	42	429
07.00-07.59	162	171	181	160	189	59	41	963
08.00-08.59	272	294	283	331	303	72	39	1,594
09.00-09.59	217	218	236	203	207	111	65	1,257
10.00-10.59	138	166	151	123	146	140	102	966
11.00-11.59	157	181	179	149	172	158	112	1,108
12.00-12.59	143	166	205	170	202	194	148	1,228
13.00-13.59	184	195	171	210	230	221	193	1,404
14.00-14.59	180	210	197	194	197	210	171	1,359
15.00-15.59	237	250	253	265	295	193	178	1,671
16.00-16.59	269	289	256	260	273	185	156	1,688
17.00-17.59	243	322	315	297	317	205	167	1,866
18.00-18.59	276	293	307	282	309	207	162	1,836
19.00-19.59	183	216	194	223	220	176	152	1,364
20.00-20.59	125	134	151	137	167	161	116	991
21.00-21.59	104	113	131	118	142	117	114	839
22.00-22.59	72	84	106	85	115	118	92	672
23.00-23.59	60	69	79	76	108	101	61	554
Total	3,212	3,560	3,583	3,521	3,842	3,022	2,499	23,239

Table 2.19 Collisions in the Greater London area in 2009 tabulated by lighting condition and borough

Borough	Light	Dark	Total
City of London	230	70	300
Westminster	941	449	1,390
Camden	577	238	815
Islington	517	205	722
Hackney	563	243	806
Tower Hamlets	522	250	772
Greenwich	498	207	705
Lewisham	579	251	830
Southwark	695	280	975
Lambeth	805	339	1,144
Wandsworth	558	254	812
Hammersmith and Fulham	452	185	637
Kensington and Chelsea	495	173	668
Total Inner	7,432	3,144	10,576
Waltham Forest	429	163	592
Redbridge	429	181	610
Havering	432	151	583
Barking and Dagenham	298	106	404
Newham	514	251	765
Bexley	344	141	485
Bromley	499	201	700
Croydon	629	276	905
Sutton	282	106	388
Merton	287	99	386
Kingston	290	88	378
Richmond	300	87	387
Hounslow	496	229	725
Hillingdon	504	228	732
Ealing	629	273	902
Brent	540	175	715
Harrow	292	109	401
Barnet	794	301	1,095
Haringey	542	214	756
Enfield	521	233	754
Total Outer	9,051	3,612	12,663
Greater London	16,483	6,756	23,239

Table 2.20 Collisions in the Greater London area in 2009 tabulated by speed limit and borough

Borough	20 mph or less	30 mph	40 mph	50 mph	60 mph	70 mph	Total
City of London	0	300	0	0	0	0	300
Westminster	2	1,363	9	15	0	1	1,390
Camden	5	809	1	0	0	0	815
Islington	1	719	2	0	0	0	722
Hackney	0	799	1	6	0	0	806
Tower Hamlets	5	733	23	10	1	0	772
Greenwich	0	627	19	58	1	0	705
Lewisham	0	827	3	0	0	0	830
Southwark	0	974	0	1	0	0	975
Lambeth	0	1,137	7	0	0	0	1,144
Wandsworth	2	802	8	0	0	0	812
Hammersmith and Fulham	2	619	13	3	0	0	637
Kensington and Chelsea	1	663	2	2	0	0	668
Total Inner	18	10,372	88	95	2	1	10,576
Waltham Forest	4	554	6	28	0	0	592
Redbridge	1	516	53	36	0	4	610
Havering	0	492	22	32	5	32	583
Barking and Dagenham	1	357	22	21	0	3	404
Newham	7	688	44	25	0	1	765
Bexley	0	443	7	34	0	1	485
Bromley	2	693	4	0	1	0	700
Croydon	0	900	4	0	1	0	905
Sutton	0	386	2	0	0	0	388
Merton	2	376	7	1	0	0	386
Kingston	4	357	5	12	0	0	378
Richmond	4	373	10	0	0	0	387
Hounslow	1	606	95	12	7	4	725
Hillingdon	1	540	75	56	9	51	732
Ealing	2	810	62	28	0	0	902
Brent	1	673	31	9	0	1	715
Harrow	1	389	10	0	1	0	401
Barnet	2	874	80	113	1	25	1,095
Haringey	1	745	9	1	0	0	756
Enfield	0	605	77	36	2	34	754
Total Outer	34	11,377	625	444	27	156	12,663
Greater London	52	21,749	713	539	29	157	23,239

Table 2.21 Collisions in the Greater London area in 2009 tabulated by highway authority and borough

Borough	TLRN ¹	Highways		Total
		Agency	Borough	
City of London	123	0	177	300
Westminster	358	0	1,032	1,390
Camden	224	0	591	815
Islington	319	0	403	722
Hackney	380	0	426	806
Tower Hamlets	445	0	327	772
Greenwich	228	0	477	705
Lewisham	405	0	425	830
Southwark	420	0	555	975
Lambeth	677	0	467	1,144
Wandsworth	421	0	391	812
Hammersmith and Fulham	55	0	582	637
Kensington and Chelsea	204	0	464	668
Total Inner	4,259	0	6,317	10,576
Waltham Forest	60	0	532	592
Redbridge	164	6	440	610
Havering	92	40	451	583
Barking and Dagenham	70	0	334	404
Newham	109	0	656	765
Bexley	40	0	445	485
Bromley	80	0	620	700
Croydon	184	0	721	905
Sutton	118	0	270	388
Merton	66	0	320	386
Kingston	78	0	300	378
Richmond	94	0	293	387
Hounslow	270	31	424	725
Hillingdon	107	53	572	732
Ealing	237	0	665	902
Brent	41	0	674	715
Harrow	0	0	401	401
Barnet	291	21	783	1,095
Haringey	166	0	590	756
Enfield	152	41	561	754
Total Outer	2,419	192	10,052	12,663
Greater London	6,678	192	16,369	23,239

¹ TLRN is the Transport for London Road Network.

Note: the highway authority is allocated according to the category of the road at which the collision occurred. For a collision occurring at a junction where the collision cannot be clearly allocated to a particular road the highway authority of the major road is chosen.

Figure 2.22: Collisions in Greater London by month 2009

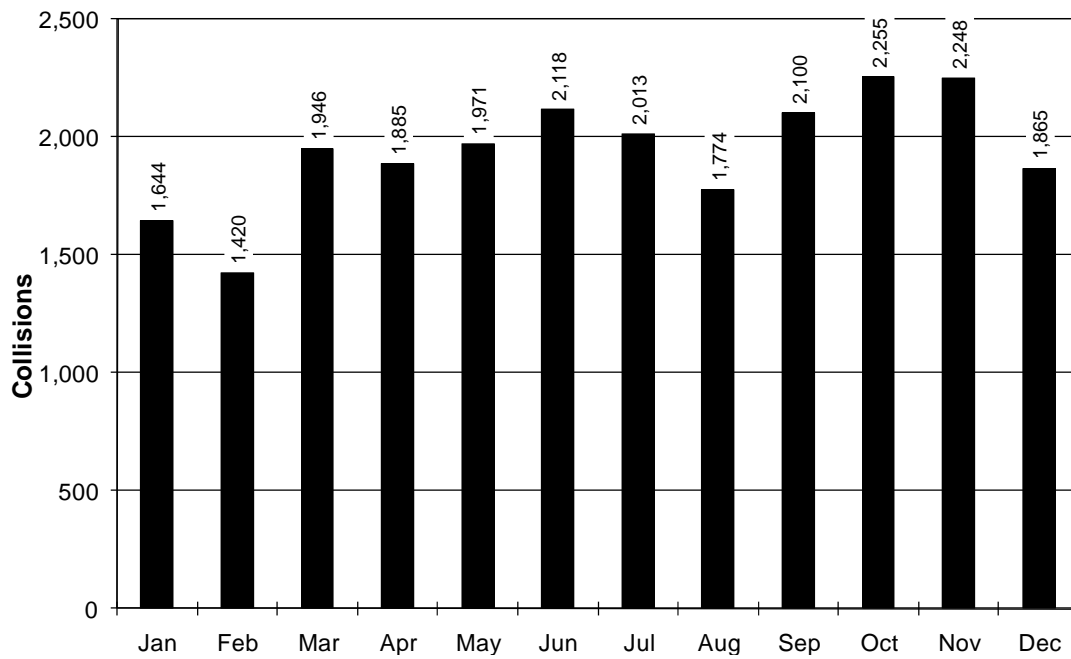


Figure 2.23: Collisions in Greater London by day of week 2009

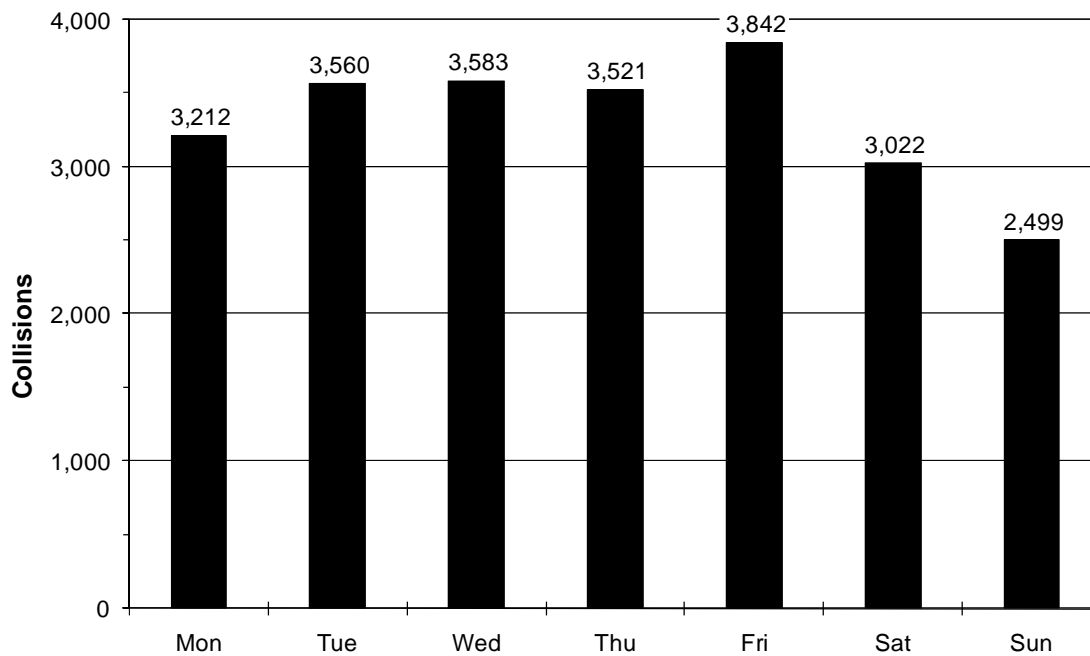
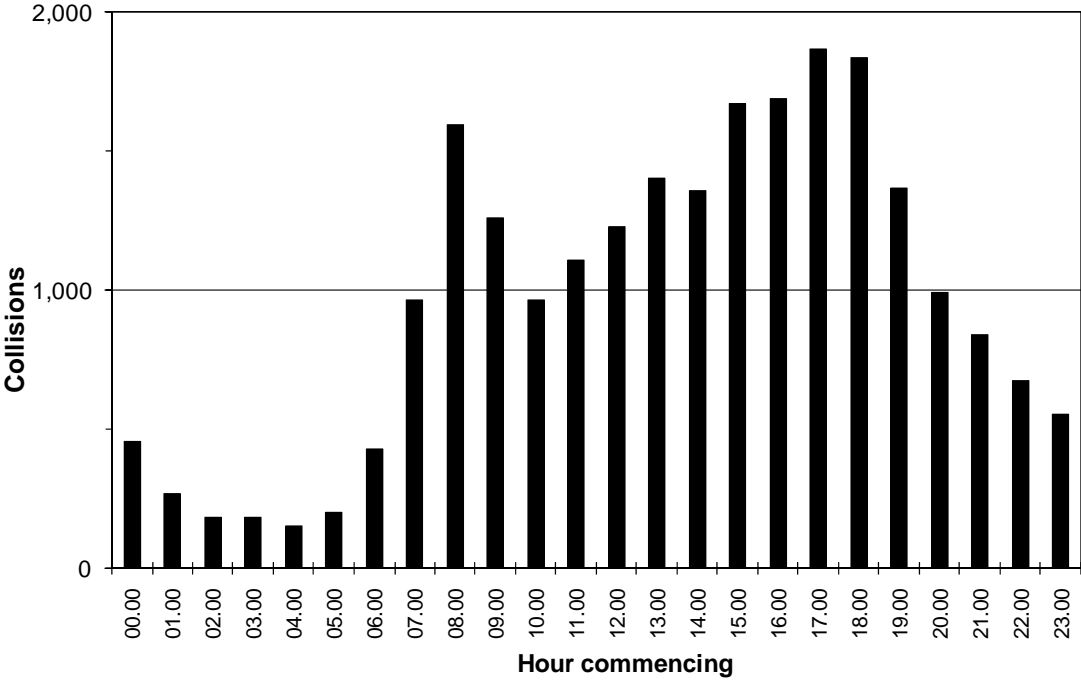


Figure 2.24: Collisions in Greater London by hour of day 2009



3

Casualty data 2009

Please note that for 2009 data Private Hire fields have been incorporated into Taxi

Table 3.1: Casualties in Greater London 2009 by mode of travel and severity of casualty

Mode of travel					% of total in 2009
	Fatal	Serious	Slight	Total	
Pedestrian	88	967	4,154	5,209	18.6%
Pedal cyclist	13	420	3,236	3,669	13.1%
Powered two-wheeler	39	667	3,795	4,501	16.1%
Car	41	777	11,230	12,048	43.1%
Taxi	0	29	382	411	1.5%
Bus or coach	3	121	1,319	1,443	5.2%
Goods vehicle	0	46	532	578	2.1%
Other vehicle	0	16	104	120	0.4%
Total	184	3,043	24,752	27,979	100.0%
% of total in 2009	0.7%	10.9%	88.5%	100.0%	

Table 3.2: Casualties in Greater London in 2009 by mode of travel, age group and gender

Mode of travel	Age group					Gender		Total
	0-15	16-24	25-59	60+	Unknown	Male	Female	
Pedestrian	1,057	892	2,255	692	313	2,863	2,346	5,209
Pedal cyclist	268	485	2,592	101	223	2,842	827	3,669
Powered two-wheeler	22	912	3,247	94	226	4,105	396	4,501
Car	561	2,774	7,075	927	711	6,590	5,458	12,048
Taxi	5	40	288	52	26	322	87	411
Bus or coach	157	109	603	445	129	528	915	1,443
Goods vehicle	16	69	448	23	22	532	46	578
Other vehicle	4	16	62	22	16	87	35	120
Total	2,090	5,297	16,570	2,356	1,666	17,869	10,110	27,979
% of total in 2009	7.5%	18.9%	59.2%	8.4%	6.0%	63.9%	36.1%	100.0%

Table 3.3: Casualties in Greater London 2009 by borough and percentage change over 2008

Borough	Total casualties		Pedestrians		Pedal cyclists		Powered two-wheeler:		Car occupants		Total vehicle occupants	
City of London	343	(-9%)	89	(-15%)	110	(-1%)	73	(3%)	33	(-20%)	254	(-7%)
Westminster	1,570	(-2%)	419	(-9%)	303	(9%)	347	(13%)	275	(-12%)	1,151	(0%)
Camden	908	(6%)	274	(40%)	167	(0%)	185	(1%)	174	(-21%)	634	(-4%)
Islington	811	(19%)	170	(31%)	230	(44%)	148	(21%)	172	(-18%)	641	(16%)
Hackney	922	(-6%)	176	(-10%)	192	(2%)	150	(-15%)	279	(-11%)	746	(-5%)
Tower Hamlets	892	(-19%)	198	(2%)	158	(15%)	159	(-16%)	312	(-34%)	694	(-24%)
Greenwich	872	(-5%)	133	(-13%)	73	(30%)	135	(19%)	454	(-8%)	739	(-4%)
Lewisham	972	(10%)	194	(30%)	115	(11%)	181	(29%)	387	(-5%)	778	(6%)
Southwark	1,108	(-7%)	210	(-11%)	222	(-6%)	230	(11%)	314	(-16%)	898	(-6%)
Lambeth	1,285	(8%)	250	(7%)	275	(34%)	297	(20%)	347	(-7%)	1,035	(9%)
Wandsworth	932	(5%)	173	(-2%)	205	(23%)	257	(15%)	234	(-9%)	759	(6%)
Hammersmith & Fulham	722	(7%)	145	(7%)	156	(19%)	193	(8%)	164	(-15%)	577	(7%)
Kensington & Chelsea	765	(-8%)	174	(-6%)	172	(15%)	195	(-23%)	145	(-1%)	591	(-8%)
Total Inner London	12,102	(-1%)	2,605	(2%)	2,378	(14%)	2,550	(6%)	3,290	(-14%)	9,497	(-1%)
Waltham Forest	736	(-21%)	121	(-24%)	93	(43%)	69	(-4%)	372	(-35%)	615	(-20%)
Redbridge	768	(-8%)	123	(-2%)	41	(21%)	71	(11%)	480	(-14%)	645	(-9%)
Havering	748	(-20%)	88	(-5%)	31	(7%)	59	(-23%)	483	(-26%)	660	(-21%)
Barking & Dagenham	524	(-15%)	70	(-29%)	28	(-3%)	59	(4%)	323	(-14%)	454	(-12%)
Newham	946	(-12%)	197	(-1%)	85	(20%)	88	(-2%)	484	(-22%)	749	(-15%)
Bexley	632	(0%)	83	(-7%)	34	(-3%)	72	(-14%)	382	(1%)	549	(1%)
Bromley	877	(1%)	104	(-19%)	63	(-6%)	108	(1%)	534	(7%)	773	(5%)
Croydon	1,142	(1%)	203	(21%)	82	(-12%)	144	(-7%)	637	(3%)	939	(-2%)
Sutton	483	(-14%)	76	(-10%)	42	(11%)	57	(-40%)	267	(-11%)	407	(-15%)
Merton	475	(-9%)	87	(-3%)	62	(0%)	86	(-15%)	195	(-17%)	388	(-10%)
Kingston	461	(2%)	73	(-9%)	69	(33%)	71	(0%)	217	(0%)	388	(4%)
Richmond	445	(-5%)	63	(0%)	99	(3%)	105	(2%)	157	(-2%)	382	(-5%)
Hounslow	879	(-5%)	123	(1%)	83	(-9%)	140	(18%)	469	(-8%)	756	(-6%)
Hillingdon	971	(1%)	122	(-4%)	72	(36%)	77	(15%)	630	(0%)	849	(2%)
Ealing	1,079	(8%)	175	(-3%)	111	(28%)	190	(43%)	510	(0%)	904	(10%)
Brent	849	(8%)	206	(2%)	69	(28%)	143	(55%)	369	(-1%)	643	(10%)
Harrow	508	(8%)	100	(25%)	31	(29%)	46	(-4%)	312	(1%)	408	(5%)
Barnet	1,403	(15%)	215	(11%)	62	(24%)	147	(29%)	877	(11%)	1,188	(16%)
Haringey	929	(25%)	204	(11%)	96	(85%)	147	(56%)	389	(19%)	725	(29%)
Enfield	1,022	(20%)	171	(45%)	38	(19%)	72	(6%)	671	(18%)	851	(16%)
Total Outer London	15,877	(-1%)	2,604	(1%)	1,291	(16%)	1,951	(8%)	8,758	(-5%)	13,273	(-1%)
Greater London	27,979	(-1%)	5,209	(2%)	3,669	(15%)	4,501	(7%)	12,048	(-8%)	22,770	(-1%)

Figure 3.4a: Vehicle casualties by type of road user 2005-2009

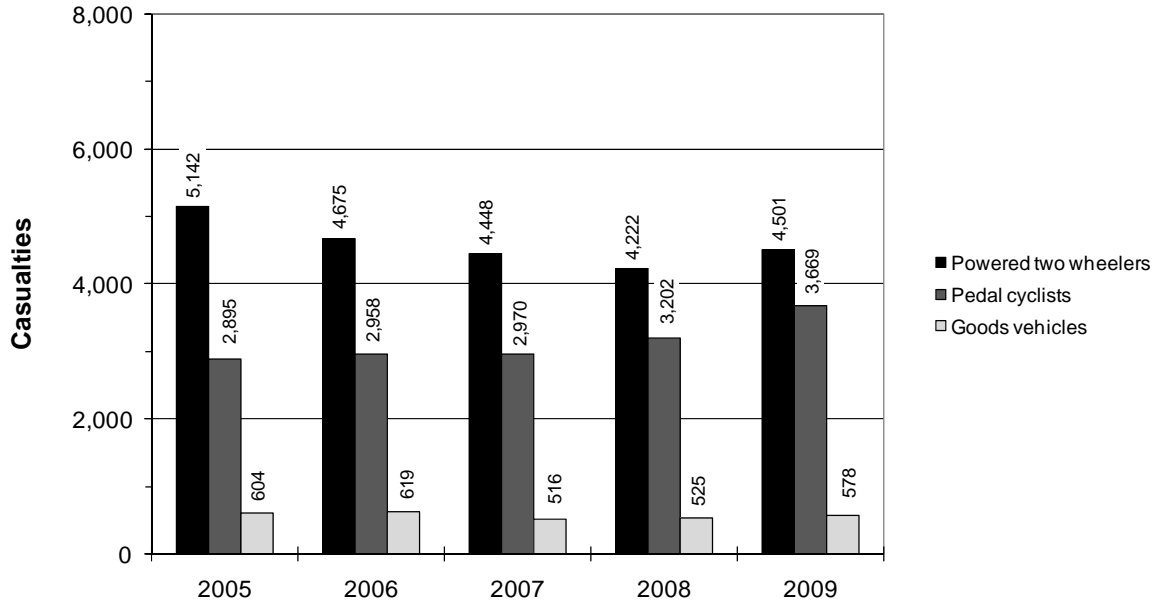


Figure 3.4b: Vehicle casualties by type of road user 2005-2009

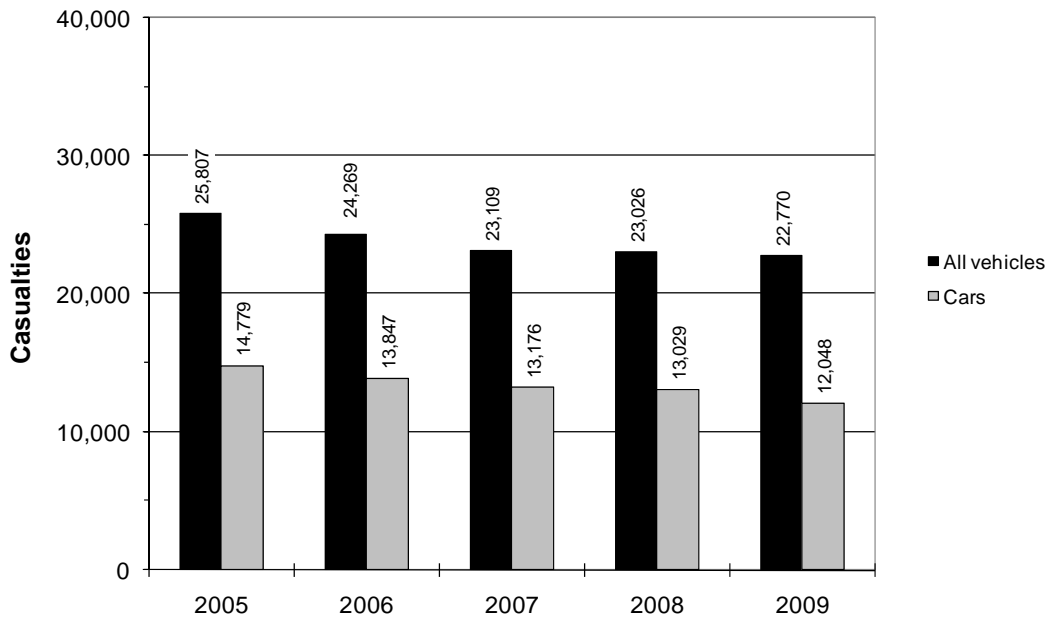


Figure 3.5a: Pedestrian casualties 2005-2009

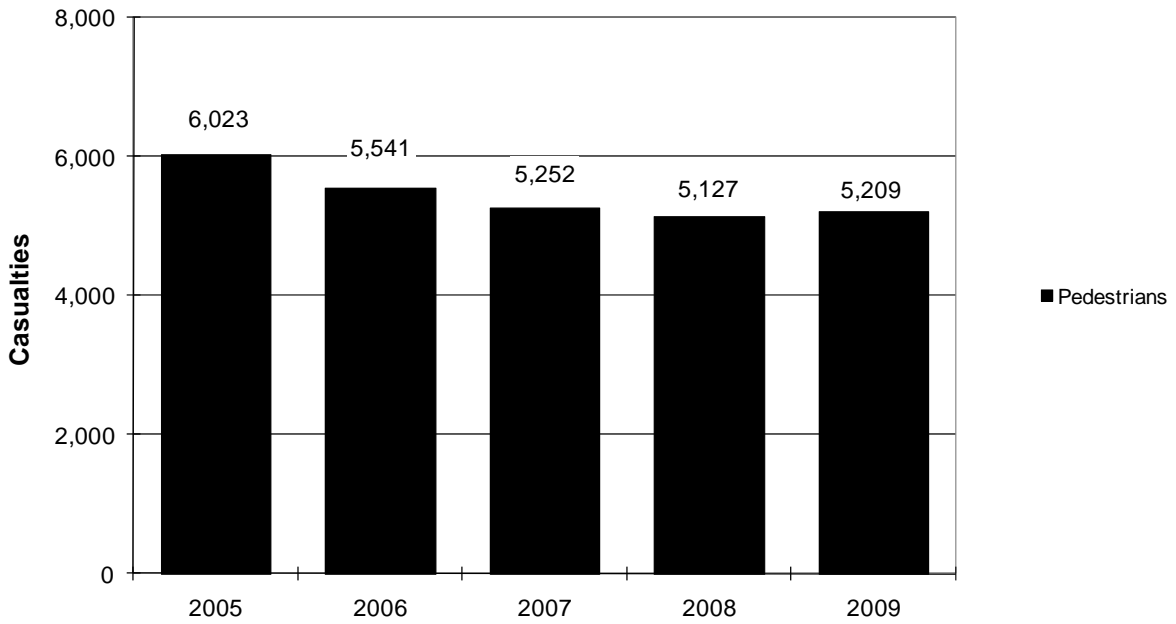


Figure 3.5b: Pedestrian casualties by age groups 2005-2009

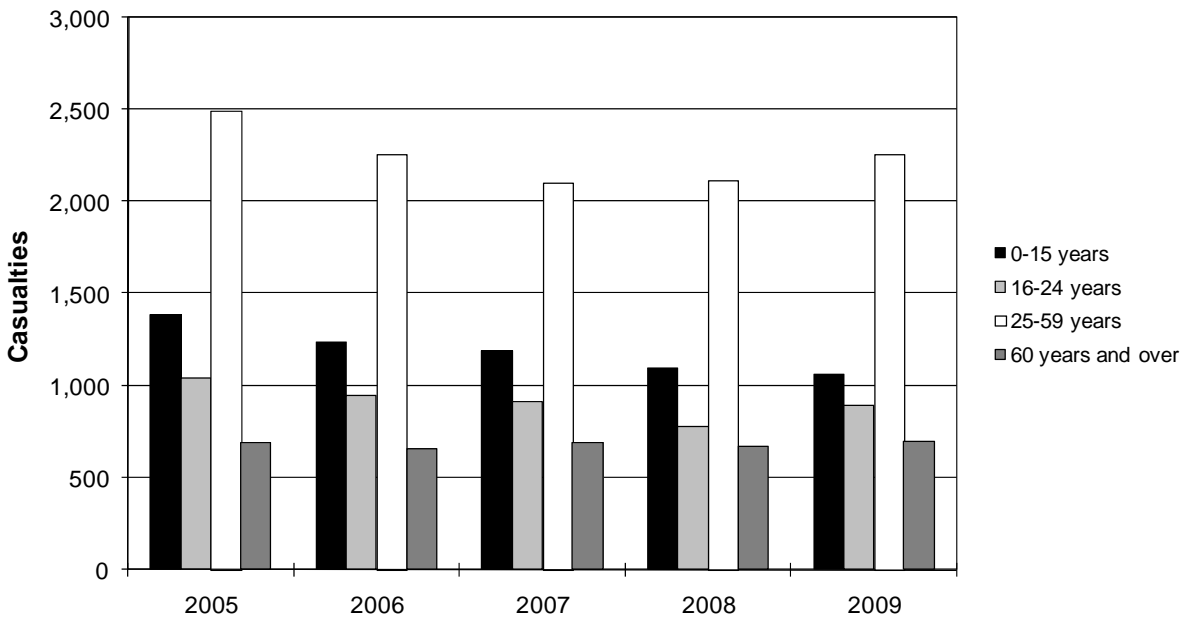


Figure 3.6a: Driver casualties by type of vehicle 2005-2009

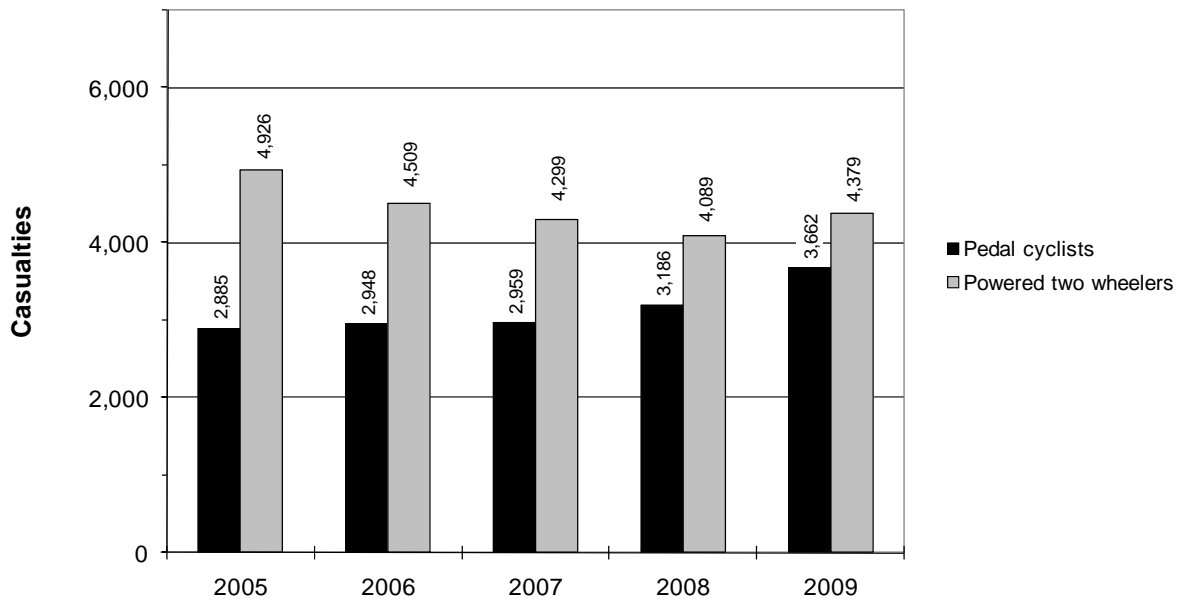


Figure 3.6b: Driver casualties by type of vehicle 2005-2009

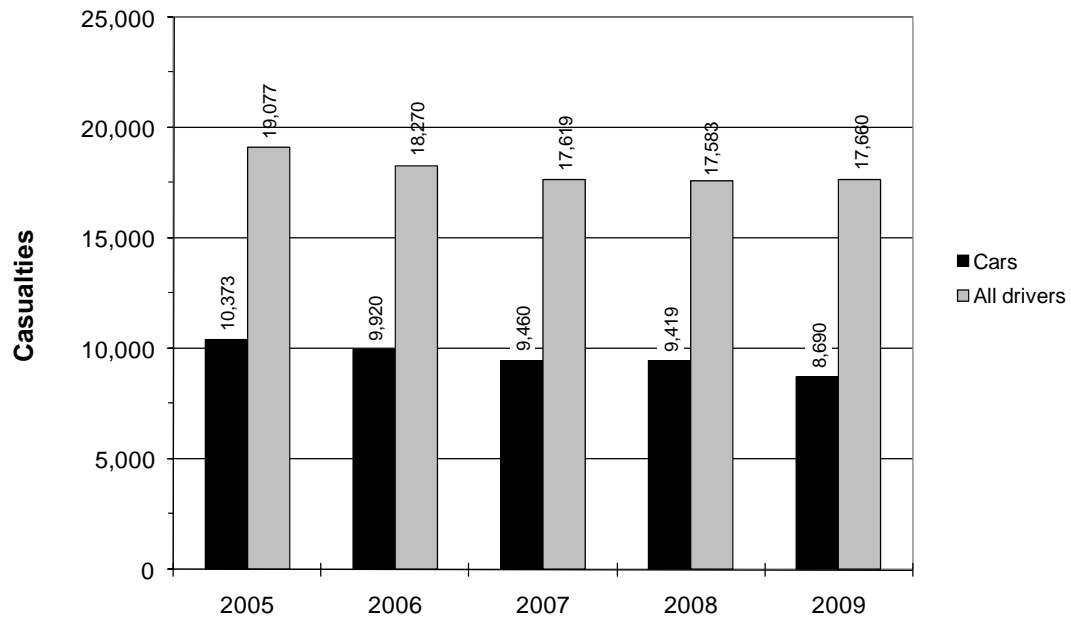


Figure 3.7a: Passenger casualties by type of vehicle 2005-2009

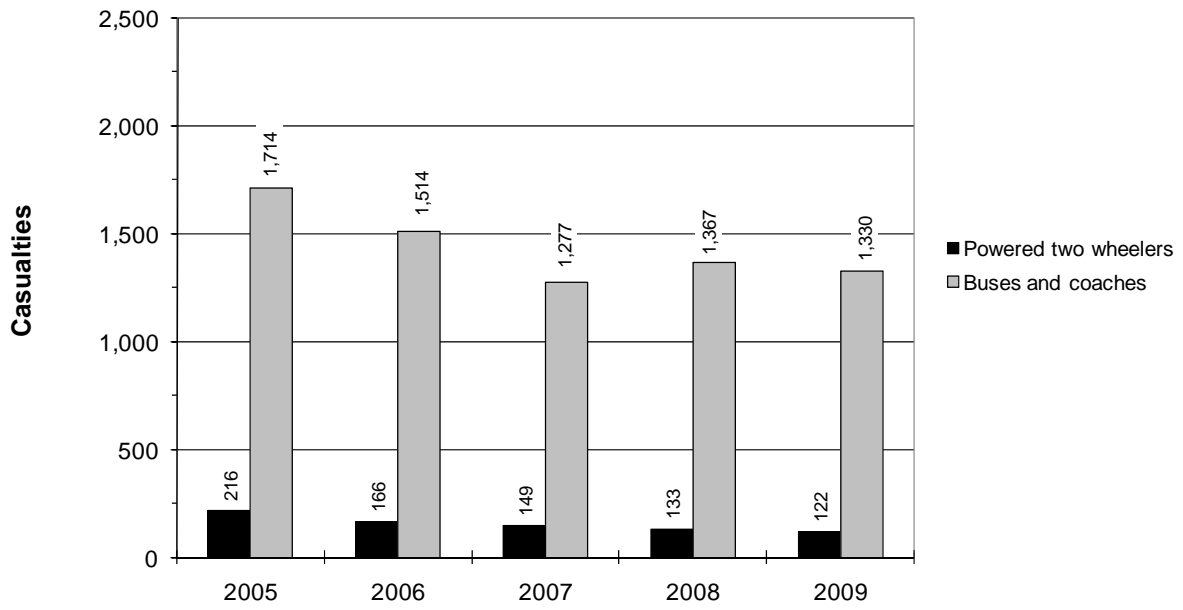


Figure 3.7b: Passenger casualties by type of vehicle 2005-2009

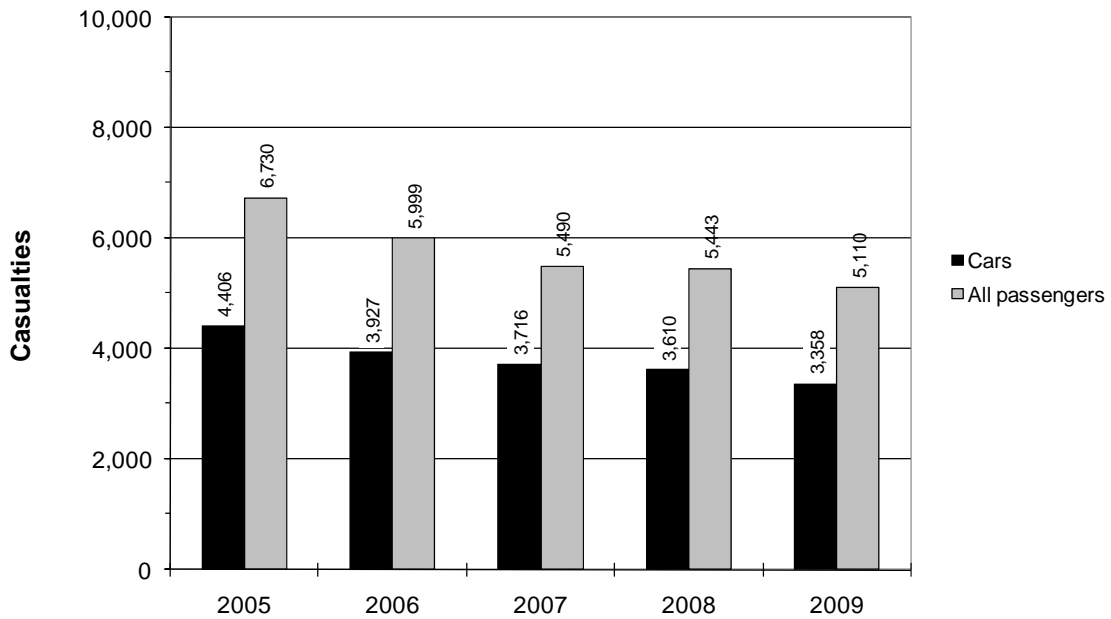


Table 3.8 Driver and passenger casualties in the Greater London area in 2009 tabulated by age group and vehicle occupied

Vehicle type	0-15 years	16-24 years	25-59 years	60+ years	Not known	Total
Pedal cycle	268	485	2,592	101	223	3,669
Motor cycle up to 50cc	6	165	240	4	19	434
Motor cycle 50 to 125cc	11	520	1,259	21	84	1,895
Motor cycle 125 to 500cc	2	75	332	22	37	468
Motor cycle over 500cc	3	152	1,416	47	86	1,704
Car	561	2,774	7,075	927	711	12,048
Taxi	5	40	288	52	26	411
Bus or coach	157	109	603	445	129	1,443
Goods	16	69	448	23	22	578
Other	4	16	62	22	16	120
Total	1,033	4,405	14,315	1,664	1,353	22,770

Table 3.9 Casualties in the Greater London area in 2009 tabulated by severity and borough

Borough	Fatal	Serious	Slight	Total
City of London	3	43	297	343
Westminster	15	246	1,309	1,570
Camden	5	136	767	908
Islington	3	74	734	811
Hackney	4	99	819	922
Tower Hamlets	7	98	787	892
Greenwich	8	91	773	872
Lewisham	7	105	860	972
Southwark	6	121	981	1,108
Lambeth	2	171	1,112	1,285
Wandsworth	6	114	812	932
Hammersmith and Fulham	3	90	629	722
Kensington and Chelsea	2	92	671	765
Total Inner	71	1,480	10,551	12,102
Waltham Forest	5	56	675	736
Redbridge	9	60	699	768
Havering	5	70	673	748
Barking and Dagenham	2	43	479	524
Newham	9	84	853	946
Bexley	5	77	550	632
Bromley	11	116	750	877
Croydon	5	102	1,035	1,142
Sutton	3	54	426	483
Merton	2	53	420	475
Kingston	2	50	409	461
Richmond	3	53	389	445
Hounslow	6	95	778	879
Hillingdon	5	83	883	971
Ealing	7	119	953	1,079
Brent	8	93	748	849
Harrow	3	46	459	508
Barnet	8	129	1,266	1,403
Haringey	6	92	831	929
Enfield	9	88	925	1,022
Total Outer	113	1,563	14,201	15,877
Greater London	184	3,043	24,752	27,979

Table 3.10 Casualties in the Greater London area in 2009 by borough, mode of travel and severity

00 City of London

Mode of travel	Fatal	Serious	Slight	Total
Pedestrians	2	14	73	89
Pedal cycles	1	18	91	110
Powered two wheelers	0	7	66	73
Car occupants	0	4	29	33
Taxi occupants	0	0	8	8
Bus or coach occupants	0	0	22	22
Goods vehicle occupants	0	0	8	8
Other vehicle occupants	0	0	0	0
Total	3	43	297	343

01 Westminster

Mode of travel	Fatal	Serious	Slight	Total
Pedestrians	10	89	320	419
Pedal cycles	1	44	258	303
Powered two wheelers	3	59	285	347
Car occupants	0	27	248	275
Taxi occupants	0	6	53	59
Bus or coach occupants	1	15	113	129
Goods vehicle occupants	0	5	21	26
Other vehicle occupants	0	1	11	12
Total	15	246	1,309	1,570

Table 3.10 Casualties in the Greater London area in 2009 by borough, mode of travel and severity

02 Camden

Mode of travel	Fatal	Serious	Slight	Total
Pedestrians	4	61	209	274
Pedal cycles	1	21	145	167
Powered two wheelers	0	28	157	185
Car occupants	0	14	160	174
Taxi occupants	0	4	36	40
Bus or coach occupants	0	6	51	57
Goods vehicle occupants	0	1	4	5
Other vehicle occupants	0	1	5	6
Total	5	136	767	908

03 Islington

Mode of travel	Fatal	Serious	Slight	Total
Pedestrians	1	28	141	170
Pedal cycles	1	17	212	230
Powered two wheelers	0	15	133	148
Car occupants	0	8	164	172
Taxi occupants	0	0	19	19
Bus or coach occupants	1	6	51	58
Goods vehicle occupants	0	0	13	13
Other vehicle occupants	0	0	1	1
Total	3	74	734	811

Table 3.10 Casualties in the Greater London area in 2009 by borough, mode of travel and severity

04 Hackney

Mode of travel	Fatal	Serious	Slight	Total
Pedestrians	3	26	147	176
Pedal cycles	0	23	169	192
Powered two wheelers	1	22	127	150
Car occupants	0	22	257	279
Taxi occupants	0	1	24	25
Bus or coach occupants	0	3	78	81
Goods vehicle occupants	0	2	16	18
Other vehicle occupants	0	0	1	1
Total	4	99	819	922

05 Tower Hamlets

Mode of travel	Fatal	Serious	Slight	Total
Pedestrians	3	43	152	198
Pedal cycles	1	14	143	158
Powered two wheelers	2	19	138	159
Car occupants	1	18	293	312
Taxi occupants	0	1	18	17
Bus or coach occupants	0	1	32	33
Goods vehicle occupants	0	1	11	12
Other vehicle occupants	0	1	0	3
Total	7	98	787	892

Table 3.10 Casualties in the Greater London area in 2009 by borough, mode of travel and severity

06 Greenwich

Mode of travel	Fatal	Serious	Slight	Total
Pedestrians	3	20	110	133
Pedal cycles	2	11	60	73
Powered two wheelers	0	13	122	135
Car occupants	3	38	413	454
Taxi occupants	0	1	5	6
Bus or coach occupants	0	5	38	43
Goods vehicle occupants	0	3	22	25
Other vehicle occupants	0	0	3	3
Total	8	91	773	872

07 Lewisham

Mode of travel	Fatal	Serious	Slight	Total
Pedestrians	3	35	156	194
Pedal cycles	0	11	104	115
Powered two wheelers	4	24	153	181
Car occupants	0	24	363	387
Taxi occupants	0	4	7	11
Bus or coach occupants	0	3	58	61
Goods vehicle occupants	0	2	16	18
Other vehicle occupants	0	2	3	5
Total	7	105	860	972

Table 3.10 Casualties in the Greater London area in 2009 by borough, mode of travel and severity

08 Southwark

Mode of travel	Fatal	Serious	Slight	Total
Pedestrians	3	44	163	210
Pedal cycles	1	26	195	222
Powered two wheelers	0	34	196	230
Car occupants	2	11	301	314
Taxi occupants	0	2	17	19
Bus or coach occupants	0	3	91	94
Goods vehicle occupants	0	0	17	17
Other vehicle occupants	0	1	1	2
Total	6	121	981	1,108

09 Lambeth

Mode of travel	Fatal	Serious	Slight	Total
Pedestrians	1	50	199	250
Pedal cycles	1	32	242	275
Powered two wheelers	0	49	248	297
Car occupants	0	32	315	347
Taxi occupants	0	0	15	15
Bus or coach occupants	0	5	75	80
Goods vehicle occupants	0	2	16	18
Other vehicle occupants	0	1	2	3
Total	2	171	1,112	1,285

Table 3.10 Casualties in the Greater London area in 2009 by borough, mode of travel and severity

10 Wandsworth

Mode of travel	Fatal	Serious	Slight	Total
Pedestrians	5	39	129	173
Pedal cycles	0	23	182	205
Powered two wheelers	1	33	223	257
Car occupants	0	13	221	234
Taxi occupants	0	0	17	17
Bus or coach occupants	0	6	26	32
Goods vehicle occupants	0	0	11	11
Other vehicle occupants	0	0	3	3
Total	6	114	812	932

11 Hammersmith and Fulham

Mode of travel	Fatal	Serious	Slight	Total
Pedestrians	1	27	117	145
Pedal cycles	0	21	135	156
Powered two wheelers	2	29	162	193
Car occupants	0	6	158	164
Taxi occupants	0	0	9	9
Bus or coach occupants	0	5	41	46
Goods vehicle occupants	0	1	7	8
Other vehicle occupants	0	1	0	1
Total	3	90	629	722

Table 3.10 Casualties in the Greater London area in 2009 by borough, mode of travel and severity

12 Kensington and Chelsea

Mode of travel	Fatal	Serious	Slight	Total
Pedestrians	0	29	145	174
Pedal cycles	1	22	149	172
Powered two wheelers	1	29	165	195
Car occupants	0	5	140	145
Taxi occupants	0	2	26	28
Bus or coach occupants	0	5	37	42
Goods vehicle occupants	0	0	8	8
Other vehicle occupants	0	0	1	1
Total	2	92	671	765

13 Waltham Forest

Mode of travel	Fatal	Serious	Slight	Total
Pedestrians	1	16	104	121
Pedal cycles	0	9	84	93
Powered two wheelers	2	6	61	69
Car occupants	1	21	350	372
Taxi occupants	0	0	9	9
Bus or coach occupants	1	2	41	44
Goods vehicle occupants	0	1	21	22
Other vehicle occupants	0	1	5	6
Total	5	56	675	736

Table 3.10 Casualties in the Greater London area in 2009 by borough, mode of travel and severity

14 Redbridge

Mode of travel	Fatal	Serious	Slight	Total
Pedestrians	3	17	103	123
Pedal cycles	0	8	33	41
Powered two wheelers	0	8	63	71
Car occupants	6	23	451	480
Taxi occupants	0	0	6	6
Bus or coach occupants	0	1	16	17
Goods vehicle occupants	0	3	22	25
Other vehicle occupants	0	0	5	5
Total	9	60	699	768

15 Havering

Mode of travel	Fatal	Serious	Slight	Total
Pedestrians	1	15	72	88
Pedal cycles	0	6	25	31
Powered two wheelers	0	12	47	59
Car occupants	4	34	445	483
Taxi occupants	0	0	7	7
Bus or coach occupants	0	1	44	45
Goods vehicle occupants	0	1	24	25
Other vehicle occupants	0	1	9	10
Total	5	70	673	748

Table 3.10 Casualties in the Greater London area in 2009 by borough, mode of travel and severity

16 Barking and Dagenham

Mode of travel	Fatal	Serious	Slight	Total
Pedestrians	0	10	60	70
Pedal cycles	0	4	24	28
Powered two wheelers	1	10	48	59
Car occupants	1	17	305	323
Taxi occupants	0	0	6	6
Bus or coach occupants	0	1	17	18
Goods vehicle occupants	0	1	18	19
Other vehicle occupants	0	0	1	1
Total	2	43	479	524

17 Newham

Mode of travel	Fatal	Serious	Slight	Total
Pedestrians	4	47	146	197
Pedal cycles	2	6	77	85
Powered two wheelers	1	18	69	88
Car occupants	2	10	472	484
Taxi occupants	0	0	18	18
Bus or coach occupants	0	2	55	57
Goods vehicle occupants	0	1	13	14
Other vehicle occupants	0	0	3	3
Total	9	84	853	946

Table 3.10 Casualties in the Greater London area in 2009 by borough, mode of travel and severity

18 Bexley

Mode of travel	Fatal	Serious	Slight	Total
Pedestrians	2	19	62	83
Pedal cycles	0	8	26	34
Powered two wheelers	1	13	58	72
Car occupants	2	30	350	382
Taxi occupants	0	1	3	4
Bus or coach occupants	0	3	35	38
Goods vehicle occupants	0	2	11	13
Other vehicle occupants	0	1	5	6
Total	5	77	550	632

19 Bromley

Mode of travel	Fatal	Serious	Slight	Total
Pedestrians	0	28	76	104
Pedal cycles	0	5	58	63
Powered two wheelers	5	21	82	108
Car occupants	6	51	477	534
Taxi occupants	0	0	0	0
Bus or coach occupants	0	7	36	43
Goods vehicle occupants	0	3	19	22
Other vehicle occupants	0	1	2	3
Total	11	116	750	877

Table 3.10 Casualties in the Greater London area in 2009 by borough, mode of travel and severity

20 Croydon

Mode of travel	Fatal	Serious	Slight	Total
Pedestrians	4	30	169	203
Pedal cycles	0	7	75	82
Powered two wheelers	1	17	126	144
Car occupants	0	41	596	637
Taxi occupants	0	0	3	3
Bus or coach occupants	0	5	46	51
Goods vehicle occupants	0	2	15	17
Other vehicle occupants	0	0	5	5
Total	5	102	1,035	1,142

21 Sutton

Mode of travel	Fatal	Serious	Slight	Total
Pedestrians	0	16	60	76
Pedal cycles	0	3	39	42
Powered two wheelers	2	9	46	57
Car occupants	1	21	245	267
Taxi occupants	0	0	1	1
Bus or coach occupants	0	3	21	24
Goods vehicle occupants	0	2	14	16
Other vehicle occupants	0	0	0	0
Total	3	54	426	483

Table 3.10 Casualties in the Greater London area in 2009 by borough, mode of travel and severity

22 Merton

Mode of travel	Fatal	Serious	Slight	Total
Pedestrians	2	18	67	87
Pedal cycles	0	7	55	62
Powered two wheelers	0	17	69	86
Car occupants	0	9	186	195
Taxi occupants	0	1	9	10
Bus or coach occupants	0	1	23	24
Goods vehicle occupants	0	0	9	9
Other vehicle occupants	0	0	2	2
Total	2	53	420	475

23 Kingston

Mode of travel	Fatal	Serious	Slight	Total
Pedestrians	1	9	63	73
Pedal cycles	0	9	60	69
Powered two wheelers	1	12	58	71
Car occupants	0	14	203	217
Taxi occupants	0	1	3	4
Bus or coach occupants	0	4	14	18
Goods vehicle occupants	0	1	7	8
Other vehicle occupants	0	0	1	1
Total	2	50	409	461

Table 3.10 Casualties in the Greater London area in 2009 by borough, mode of travel and severity

24 Richmond

Mode of travel	Fatal	Serious	Slight	Total
Pedestrians	3	11	49	63
Pedal cycles	0	17	82	99
Powered two wheelers	0	13	92	105
Car occupants	0	11	146	157
Taxi occupants	0	0	2	2
Bus or coach occupants	0	1	8	9
Goods vehicle occupants	0	0	10	10
Other vehicle occupants	0	0	0	0
Total	3	53	389	445

25 Hounslow

Mode of travel	Fatal	Serious	Slight	Total
Pedestrians	3	21	99	123
Pedal cycles	0	11	72	83
Powered two wheelers	1	19	120	140
Car occupants	2	37	430	469
Taxi occupants	0	2	11	13
Bus or coach occupants	0	4	26	30
Goods vehicle occupants	0	0	15	15
Other vehicle occupants	0	1	5	6
Total	6	95	778	879

Table 3.10 Casualties in the Greater London area in 2009 by borough, mode of travel and severity

26 Hillingdon

Mode of travel	Fatal	Serious	Slight	Total
Pedestrians	1	17	104	122
Pedal cycles	0	7	65	72
Powered two wheelers	2	13	62	77
Car occupants	2	38	590	630
Taxi occupants	0	1	6	7
Bus or coach occupants	0	4	29	33
Goods vehicle occupants	0	2	21	23
Other vehicle occupants	0	1	6	7
Total	5	83	883	971

27 Ealing

Mode of travel	Fatal	Serious	Slight	Total
Pedestrians	5	35	135	175
Pedal cycles	1	15	95	111
Powered two wheelers	1	32	157	190
Car occupants	0	27	483	510
Taxi occupants	0	1	9	10
Bus or coach occupants	0	4	38	42
Goods vehicle occupants	0	4	31	35
Other vehicle occupants	0	1	5	6
Total	7	119	953	1,079

Table 3.10 Casualties in the Greater London area in 2009 by borough, mode of travel and severity

28 Brent

Mode of travel	Fatal	Serious	Slight	Total
Pedestrians	5	30	171	206
Pedal cycles	0	4	65	69
Powered two wheelers	2	25	116	143
Car occupants	1	31	337	369
Taxi occupants	0	1	3	4
Bus or coach occupants	0	2	27	29
Goods vehicle occupants	0	0	24	24
Other vehicle occupants	0	0	5	5
Total	8	93	748	849

29 Harrow

Mode of travel	Fatal	Serious	Slight	Total
Pedestrians	2	16	82	100
Pedal cycles	0	1	30	31
Powered two wheelers	0	6	40	46
Car occupants	1	18	293	312
Taxi occupants	0	0	3	3
Bus or coach occupants	0	2	6	8
Goods vehicle occupants	0	2	4	6
Other vehicle occupants	0	1	1	2
Total	3	46	459	508

Table 3.10 Casualties in the Greater London area in 2009 by borough, mode of travel and severity

30 Barnet

Mode of travel	Fatal	Serious	Slight	Total
Pedestrians	5	40	170	215
Pedal cycles	0	4	58	62
Powered two wheelers	2	22	123	147
Car occupants	1	54	822	877
Taxi occupants	0	0	10	10
Bus or coach occupants	0	8	39	47
Goods vehicle occupants	0	1	39	40
Other vehicle occupants	0	0	5	5
Total	8	129	1,266	1,403

31 Haringey

Mode of travel	Fatal	Serious	Slight	Total
Pedestrians	4	39	161	204
Pedal cycles	0	4	92	96
Powered two wheelers	1	21	125	147
Car occupants	1	24	364	389
Taxi occupants	0	0	8	8
Bus or coach occupants	0	2	58	60
Goods vehicle occupants	0	2	20	22
Other vehicle occupants	0	0	3	3
Total	6	92	831	929

Table 3.10 Casualties in the Greater London area in 2009 by borough, mode of travel and severity

32 Enfield

Mode of travel	Fatal	Serious	Slight	Total
Pedestrians	3	28	140	171
Pedal cycles	0	2	36	38
Powered two wheelers	2	12	58	72
Car occupants	4	44	623	671
Taxi occupants	0	0	11	11
Bus or coach occupants	0	1	27	28
Goods vehicle occupants	0	1	25	26
Other vehicle occupants	0	0	5	5
Total	9	88	925	1,022

Table 3.11 Casualties in the Greater London area in 2009 by borough, mode of travel and severity

Greater London total

Mode of travel	Fatal	Serious	Slight	Total
Pedestrians	88	967	4,154	5,209
Pedal cycles	13	420	3,236	3,669
Powered two wheelers	39	667	3,795	4,501
Car occupants	41	777	11,230	12,048
Taxi occupants	0	29	382	409
Bus or coach occupants	3	121	1,319	1,443
Goods vehicle occupants	0	46	532	578
Other vehicle occupants	0	16	104	122
Total	184	3,043	24,752	27,979

Table 3.12 Pedestrian casualties in the Greater London area in 2009 tabulated by severity and borough

Borough	Fatal	Serious	Slight	Total
City of London	2	14	73	89
Westminster	10	89	320	419
Camden	4	61	209	274
Islington	1	28	141	170
Hackney	3	26	147	176
Tower Hamlets	3	43	152	198
Greenwich	3	20	110	133
Lewisham	3	35	156	194
Southwark	3	44	163	210
Lambeth	1	50	199	250
Wandsworth	5	39	129	173
Hammersmith and Fulham	1	27	117	145
Kensington and Chelsea	0	29	145	174
Total Inner	39	505	2,061	2,605
Waltham Forest	1	16	104	121
Redbridge	3	17	103	123
Havering	1	15	72	88
Barking and Dagenham	0	10	60	70
Newham	4	47	146	197
Bexley	2	19	62	83
Bromley	0	28	76	104
Croydon	4	30	169	203
Sutton	0	16	60	76
Merton	2	18	67	87
Kingston	1	9	63	73
Richmond	3	11	49	63
Hounslow	3	21	99	123
Hillingdon	1	17	104	122
Ealing	5	35	135	175
Brent	5	30	171	206
Harrow	2	16	82	100
Barnet	5	40	170	215
Haringey	4	39	161	204
Enfield	3	28	140	171
Total Outer	49	462	2,093	2,604
Greater London	88	967	4,154	5,209

Table 3.13 Driver casualties in the Greater London area in 2009 tabulated by severity and borough

Borough	Fatal	Serious	Slight	Total
City of London	1	28	187	216
Westminster	4	127	797	928
Camden	1	60	442	503
Islington	1	37	496	534
Hackney	0	60	516	576
Tower Hamlets	4	48	516	568
Greenwich	2	54	499	555
Lewisham	4	61	545	610
Southwark	3	67	642	712
Lambeth	1	100	737	838
Wandsworth	1	69	583	653
Hammersmith and Fulham	2	54	432	488
Kensington and Chelsea	2	53	424	479
Total Inner	26	818	6,816	7,660
Waltham Forest	3	33	418	454
Redbridge	1	32	441	474
Havering	4	41	412	457
Barking and Dagenham	2	25	308	335
Newham	3	33	512	548
Bexley	2	45	360	407
Bromley	9	65	521	595
Croydon	1	52	643	696
Sutton	2	26	279	307
Merton	0	31	270	301
Kingston	1	34	268	303
Richmond	0	40	294	334
Hounslow	2	58	530	590
Hillingdon	4	55	563	622
Ealing	2	71	636	709
Brent	3	47	443	493
Harrow	1	21	292	314
Barnet	3	72	852	927
Haringey	2	36	486	524
Enfield	4	50	556	610
Total Outer	49	867	9,084	10,000
Greater London	75	1,685	15,900	17,660

Table 3.14 Passenger casualties in the Greater London area in 2009 tabulated by severity and borough

Borough	Fatal	Serious	Slight	Total
City of London	0	1	37	38
Westminster	1	30	192	223
Camden	0	15	116	131
Islington	1	9	97	107
Hackney	1	13	156	170
Tower Hamlets	0	7	119	126
Greenwich	3	17	164	184
Lewisham	0	9	159	168
Southwark	0	10	176	186
Lambeth	0	21	176	197
Wandsworth	0	6	100	106
Hammersmith and Fulham	0	9	80	89
Kensington and Chelsea	0	10	102	112
Total Inner	6	157	1,674	1,837
Waltham Forest	1	7	153	161
Redbridge	5	11	155	171
Havering	0	14	189	203
Barking and Dagenham	0	8	111	119
Newham	2	4	195	201
Bexley	1	13	128	142
Bromley	2	23	153	178
Croydon	0	20	223	243
Sutton	1	12	87	100
Merton	0	4	83	87
Kingston	0	7	78	85
Richmond	0	2	46	48
Hounslow	1	16	149	166
Hillingdon	0	11	216	227
Ealing	0	13	182	195
Brent	0	16	134	150
Harrow	0	9	85	94
Barnet	0	17	244	261
Haringey	0	17	184	201
Enfield	2	10	229	241
Total Outer	15	234	3,024	3,273
Greater London	21	391	4,698	5,110

Table 3.15 Pedestrian casualties in the Greater London area in 2009 by pedestrian action and borough

Borough	Crossing road at pedestrian crossing	Crossing within 50m of pedestrian crossing	Crossing road elsewhere	Sub-total
City of London	20	15	36	71
Westminster	122	75	139	336
Camden	83	54	97	234
Islington	54	33	59	146
Hackney	33	18	86	137
Tower Hamlets	45	29	80	154
Greenwich	26	11	75	112
Lewisham	28	33	111	172
Southwark	50	32	97	179
Lambeth	37	45	130	212
Wandsworth	28	37	70	135
Hammersmith and Fulham	47	31	36	114
Kensington and Chelsea	48	38	54	140
Total Inner	621	451	1,070	2,142
Waltham Forest	24	22	56	102
Redbridge	14	8	69	91
Havering	13	7	40	60
Barking and Dagenham	14	6	41	61
Newham	41	21	97	159
Bexley	9	9	50	68
Bromley	10	13	56	79
Croydon	39	24	109	172
Sutton	10	8	42	60
Merton	15	12	32	59
Kingston	11	7	29	47
Richmond	8	9	33	50
Hounslow	23	18	46	87
Hillingdon	13	10	74	97
Ealing	30	20	89	139
Brent	45	19	102	166
Harrow	15	11	51	77
Barnet	42	20	105	167
Haringey	46	35	83	164
Enfield	36	19	80	135
Total Outer	458	298	1,284	2,040
Greater London	1,079	749	2,354	4,182

Note: This table is continued on the next page.

Table 3.15 (cont.) Pedestrian casualties in the Greater London area in 2009 by pedestrian action and borough

Borough	In road not crossing	On footpath or verge	On refuge or central strip	In centre of carriageway	Pedestrian location unknown	Grand total
City of London	6	7	0	0	5	89
Westminster	35	41	2	0	5	419
Camden	19	16	0	1	4	274
Islington	13	7	0	1	3	170
Hackney	21	12	0	0	6	176
Tower Hamlets	18	14	0	1	11	198
Greenwich	8	10	0	1	2	133
Lewisham	9	8	0	0	5	194
Southwark	10	13	0	0	8	210
Lambeth	15	12	0	0	11	250
Wandsworth	9	14	0	2	13	173
Hammersmith and Fulham	10	14	0	0	7	145
Kensington and Chelsea	11	16	1	1	5	174
Total Inner	184	184	3	7	85	2,605
Waltham Forest	7	5	0	1	6	121
Redbridge	13	12	0	0	7	123
Havering	9	11	0	0	8	88
Barking and Dagenham	0	5	0	0	4	70
Newham	19	10	0	0	9	197
Bexley	5	9	0	0	1	83
Bromley	13	11	0	0	1	104
Croydon	15	12	0	0	4	203
Sutton	9	5	1	0	1	76
Merton	6	10	0	1	11	87
Kingston	10	3	0	0	13	73
Richmond	3	5	0	0	5	63
Hounslow	13	9	2	0	12	123
Hillingdon	10	10	0	1	4	122
Ealing	16	7	0	0	13	175
Brent	14	13	0	3	10	206
Harrow	5	14	0	0	4	100
Barnet	20	21	2	1	4	215
Haringey	13	19	3	0	5	204
Enfield	19	13	0	0	4	171
Total Outer	219	204	8	7	126	2,604
Greater London	403	388	11	14	211	5,209

Table 3.16 Driver casualties in the Greater London area in 2009 tabulated by vehicle type and borough

Borough	Motor cycle					Car	Taxi	Bus or coach	Goods vehicle	Other	Total
	Pedal cycle	up to 50cc	50 to 125cc	125 to 500cc	over 500cc						
City of London	110	4	35	5	27	21	7	0	7	0	216
Westminster	303	29	150	53	107	208	35	10	22	11	928
Camden	167	7	93	19	62	124	24	2	3	2	503
Islington	230	20	57	24	41	133	11	5	12	1	534
Hackney	192	24	68	18	38	199	17	4	15	1	576
Tower Hamlets	158	8	59	22	64	227	12	4	12	2	568
Greenwich	73	4	42	16	70	320	4	5	18	3	555
Lewisham	114	13	76	16	71	291	5	4	15	5	610
Southwark	222	18	109	19	76	237	11	4	14	2	712
Lambeth	275	23	107	29	124	248	9	3	17	3	838
Wandsworth	205	36	116	12	88	172	9	5	9	1	653
Hammersmith and Fulham	154	20	97	13	56	129	8	4	6	1	488
Kensington and Chelsea	172	25	90	14	59	93	13	5	7	1	479
Total Inner	2,375	231	1,099	260	883	2,402	165	55	157	33	7,660
Waltham Forest	93	7	32	11	17	263	6	6	16	3	454
Redbridge	40	6	25	10	29	336	5	1	20	2	474
Havering	31	6	23	3	23	336	3	4	22	6	457
Barking and Dagenham	28	6	21	4	27	230	2	1	15	1	335
Newham	85	7	28	18	33	347	13	6	10	1	548
Bexley	34	8	30	7	24	283	1	2	13	5	407
Bromley	63	7	29	5	64	403	0	6	15	3	595
Croydon	82	7	67	9	56	457	1	6	11	0	696
Sutton	42	3	16	8	29	196	0	1	12	0	307
Merton	61	11	32	12	29	139	5	2	8	2	301
Kingston	69	6	31	4	29	154	2	2	5	1	303
Richmond	98	10	32	8	52	124	1	0	9	0	334
Hounslow	83	16	56	11	55	340	10	1	13	5	590
Hillingdon	71	13	25	10	29	439	4	4	21	6	622
Ealing	111	23	86	6	71	367	7	2	31	5	709
Brent	69	19	60	17	42	261	3	2	19	1	493
Harrow	31	4	20	5	17	227	3	0	5	2	314
Barnet	62	10	53	15	68	665	7	7	35	5	927
Haringey	96	16	65	22	39	260	7	2	14	3	524
Enfield	38	6	27	12	27	461	7	3	24	5	610
Total Outer	1,287	191	758	197	760	6,288	87	58	318	56	10,000
Greater London	3,662	422	1,857	457	1,643	8,690	252	113	475	89	17,660

Figure 3.17: Pedestrian casualties at or within 50 metres of a pedestrian crossing 2005-2009

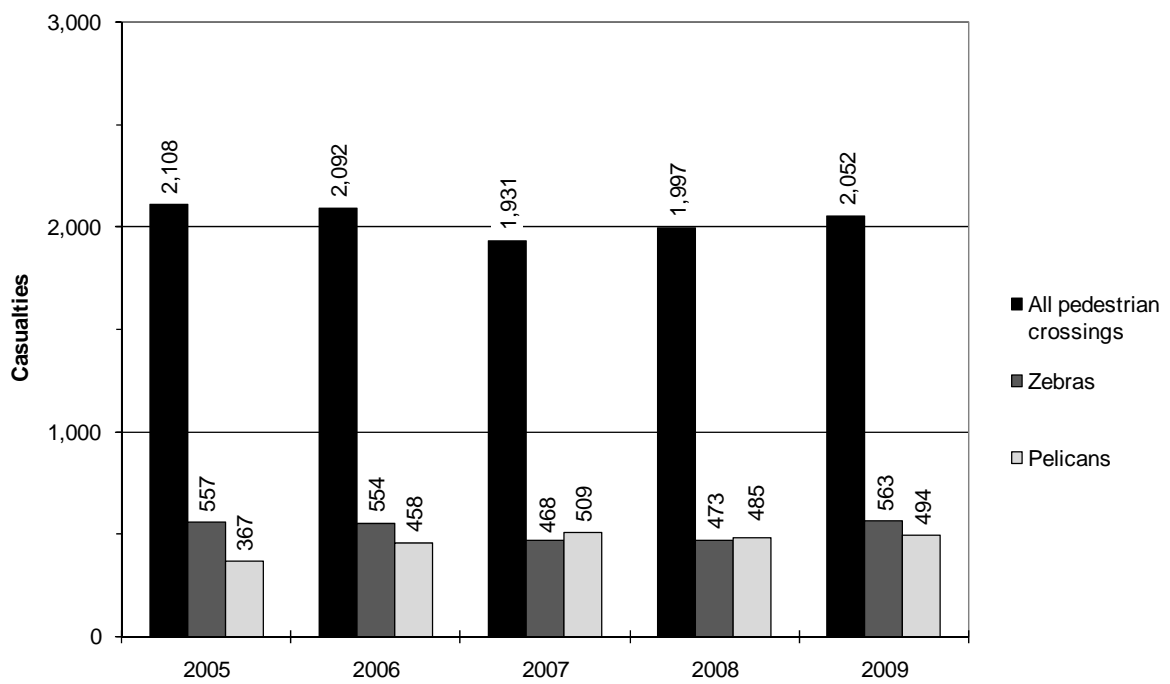


Table 3.18 Passenger casualties in the Greater London area in 2009 tabulated by vehicle type and borough

Borough	Motor cycle					Car	Taxi	Bus or Goods			Total
	Pedal cycle	up to 50cc	125cc	125 to 500cc	over 500cc			coach	vehicle	Other	
City of London	0	0	2	0	0	12	1	22	1	0	38
Westminster	0	1	2	2	3	67	24	119	4	1	223
Camden	0	1	1	1	1	50	16	55	2	4	131
Islington	0	1	2	1	2	39	8	53	1	0	107
Hackney	0	1	0	0	1	80	8	77	3	0	170
Tower Hamlets	0	1	2	2	1	85	5	29	0	1	126
Greenwich	0	0	1	0	2	134	2	38	7	0	184
Lewisham	1	0	3	0	2	96	6	57	3	0	168
Southwark	0	1	4	0	3	77	8	90	3	0	186
Lambeth	0	4	3	0	7	99	6	77	1	0	197
Wandsworth	0	1	4	0	0	62	8	27	2	2	106
Hammersmith and Fulham	2	0	4	0	3	35	1	42	2	0	89
Kensington and Chelsea	0	0	3	1	3	52	15	37	1	0	112
Total Inner	3	11	31	7	28	888	108	723	30	8	1,837
Waltham Forest	0	0	0	0	2	109	3	38	6	3	161
Redbridge	1	0	0	0	1	144	1	16	5	3	171
Havering	0	1	1	0	2	147	4	41	3	4	203
Barking and Dagenham	0	0	0	1	0	93	4	17	4	0	119
Newham	0	0	0	0	2	137	5	51	4	2	201
Bexley	0	0	1	0	2	99	3	36	0	1	142
Bromley	0	0	1	0	2	131	0	37	7	0	178
Croydon	0	0	1	1	3	180	2	45	6	5	243
Sutton	0	0	0	0	1	71	1	23	4	0	100
Merton	1	0	0	0	2	56	5	22	1	0	87
Kingston	0	0	0	0	1	63	2	16	3	0	85
Richmond	1	0	0	0	3	33	1	9	1	0	48
Hounslow	0	0	0	0	2	129	3	29	2	1	166
Hillingdon	1	0	0	0	0	191	3	29	2	1	227
Ealing	0	0	1	0	3	143	3	40	4	1	195
Brent	0	0	1	2	2	108	1	27	5	4	150
Harrow	0	0	0	0	0	85	0	8	1	0	94
Barnet	0	0	0	0	1	212	3	40	5	0	261
Haringey	0	0	1	0	4	129	1	58	8	0	201
Enfield	0	0	0	0	0	210	4	25	2	0	241
Total Outer	4	1	7	4	33	2,470	49	607	73	25	3,273
Greater London	7	12	38	11	61	3,358	157	1,330	103	33	5,110

Table 3.19 Driver casualties in the Greater London area in 2009 tabulated by age group and borough

Borough	0-15 years	16-24 years	25-59 years	60+ years	Unknown	Total
City of London	0	23	166	4	23	216
Westminster	4	109	723	41	51	928
Camden	5	67	388	22	21	503
Islington	8	75	394	21	36	534
Hackney	6	92	436	17	25	576
Tower Hamlets	10	92	416	11	39	568
Greenwich	5	108	384	27	31	555
Lewisham	10	99	460	29	12	610
Southwark	10	110	536	23	33	712
Lambeth	14	118	637	32	37	838
Wandsworth	13	99	492	25	24	653
Hammersmith and Fulham	11	70	368	16	23	488
Kensington and Chelsea	5	58	381	16	19	479
Total Inner	101	1,120	5,781	284	374	7,660
Waltham Forest	16	85	295	32	26	454
Redbridge	8	87	324	35	20	474
Havering	13	111	273	42	18	457
Barking and Dagenham	10	67	218	18	22	335
Newham	12	115	372	16	33	548
Bexley	10	101	248	36	12	407
Bromley	6	145	345	75	24	595
Croydon	13	145	466	40	32	696
Sutton	3	74	187	27	16	307
Merton	3	62	189	23	24	301
Kingston	7	72	196	19	9	303
Richmond	4	57	231	32	10	334
Hounslow	12	109	407	36	26	590
Hillingdon	18	168	369	38	29	622
Ealing	10	134	496	38	31	709
Brent	5	88	351	17	32	493
Harrow	4	67	185	42	16	314
Barnet	8	162	627	76	54	927
Haringey	9	92	367	29	27	524
Enfield	7	152	396	32	23	610
Total Outer	178	2,093	6,542	703	484	10,000
Greater London	279	3,213	12,323	987	858	17,660

Table 3.20 Passenger casualties in the Greater London area in 2009 tabulated by age group and borough

Borough	0-15 years	16-24 years	25-59 years	60+ years	Unknown	Total
City of London	4	9	19	2	4	38
Westminster	19	21	113	46	24	223
Camden	15	13	65	20	18	131
Islington	9	16	50	24	8	107
Hackney	12	38	75	24	21	170
Tower Hamlets	15	30	48	12	21	126
Greenwich	29	54	67	14	20	184
Lewisham	23	36	72	25	12	168
Southwark	31	34	78	25	18	186
Lambeth	27	32	90	33	15	197
Wandsworth	17	20	46	12	11	106
Hammersmith and Fulham	11	18	37	12	11	89
Kensington and Chelsea	10	23	51	22	6	112
Total Inner	222	344	811	271	189	1,837
Waltham Forest	28	39	63	19	12	161
Redbridge	28	45	61	16	21	171
Havering	36	48	53	33	33	203
Barking and Dagenham	30	27	42	11	9	119
Newham	37	48	79	19	18	201
Bexley	22	47	36	26	11	142
Bromley	25	67	48	34	4	178
Croydon	46	63	83	29	22	243
Sutton	10	32	37	17	4	100
Merton	16	21	32	10	8	87
Kingston	12	27	26	17	3	85
Richmond	4	12	21	9	2	48
Hounslow	29	38	66	18	15	166
Hillingdon	36	73	80	18	20	227
Ealing	39	35	86	22	13	195
Brent	19	33	64	16	18	150
Harrow	14	23	34	10	13	94
Barnet	30	68	107	31	25	261
Haringey	37	34	78	24	28	201
Enfield	34	68	85	27	27	241
Total Outer	532	848	1,181	406	306	3,273
Greater London	754	1,192	1,992	677	495	5,110

Table 3.21 Pedestrian casualties in the Greater London area in 2009 tabulated by age group and borough

Borough	0-15 years	16-24 years	25-59 years	60+ years	Unknown	Total
City of London	4	18	50	6	11	89
Westminster	18	71	253	53	24	419
Camden	23	67	132	38	14	274
Islington	21	28	78	26	17	170
Hackney	31	34	78	23	10	176
Tower Hamlets	33	31	99	21	14	198
Greenwich	40	34	39	13	7	133
Lewisham	45	35	81	29	4	194
Southwark	50	33	95	19	13	210
Lambeth	44	51	121	16	18	250
Wandsworth	28	31	77	23	14	173
Hammersmith and Fulham	24	22	66	22	11	145
Kensington and Chelsea	24	25	91	27	7	174
Total Inner	385	480	1,260	316	164	2,605
Waltham Forest	34	14	49	16	8	121
Redbridge	37	17	44	14	11	123
Havering	26	16	25	11	10	88
Barking and Dagenham	27	9	20	11	3	70
Newham	49	34	83	14	17	197
Bexley	27	13	25	15	3	83
Bromley	28	17	35	20	4	104
Croydon	55	36	71	31	10	203
Sutton	22	9	25	15	5	76
Merton	18	15	39	12	3	87
Kingston	21	14	19	15	4	73
Richmond	12	14	24	11	2	63
Hounslow	28	21	51	16	7	123
Hillingdon	31	24	45	16	6	122
Ealing	39	28	74	27	7	175
Brent	49	33	80	35	9	206
Harrow	29	11	38	18	4	100
Barnet	42	34	95	32	12	215
Haringey	44	31	89	24	16	204
Enfield	54	22	64	23	8	171
Total Outer	672	412	995	376	149	2,604
Greater London	1,057	892	2,255	692	313	5,209

Figure 3.22: Driver casualties with a positive breath test 2005-2009

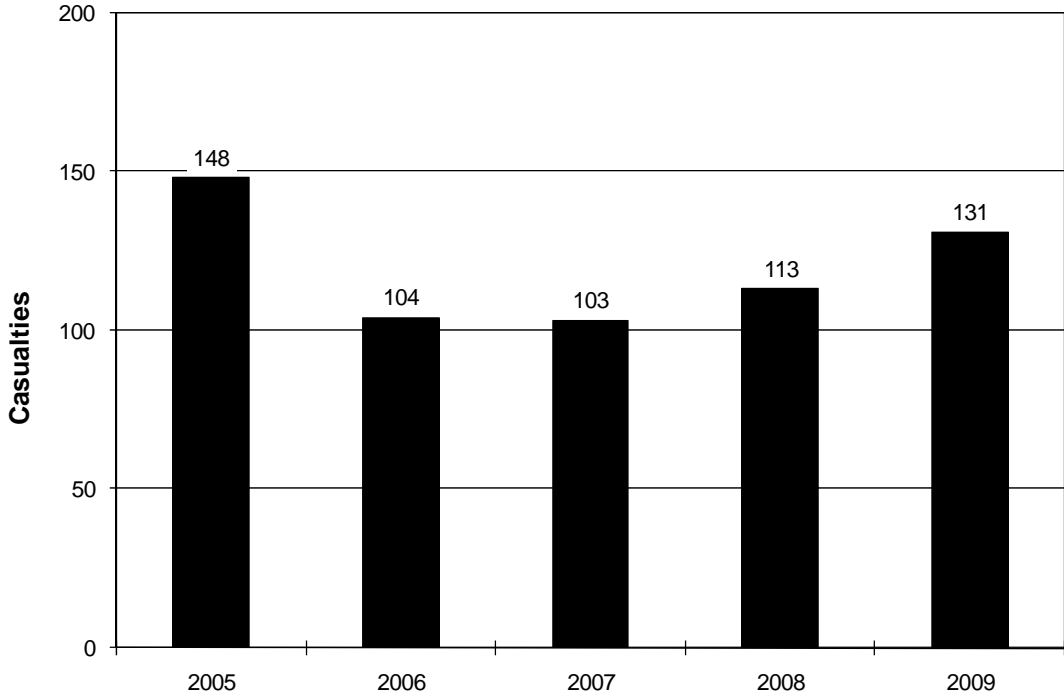


Table 3.23 Bus or coach passenger casualties in the Greater London area in 2009 tabulated by age group and borough

Borough	0-15 years	16-24 years	25-59 years	60+ years	Unknown	Total
City of London	2	3	14	2	1	22
Westminster	11	6	60	33	9	119
Camden	5	1	24	17	8	55
Islington	4	4	19	19	7	53
Hackney	2	7	33	23	12	77
Tower Hamlets	4	3	8	9	5	29
Greenwich	4	2	16	9	7	38
Lewisham	3	1	31	20	2	57
Southwark	15	9	36	23	7	90
Lambeth	9	6	33	25	4	77
Wandsworth	2	2	13	5	5	27
Hammersmith and Fulham	4	6	18	10	4	42
Kensington and Chelsea	2	3	15	17	0	37
Total Inner	67	53	320	212	71	723
Waltham Forest	8	7	13	6	4	38
Redbridge	2	0	6	6	2	16
Havering	8	4	4	17	8	41
Barking and Dagenham	3	1	5	5	3	17
Newham	11	2	18	14	6	51
Bexley	3	4	7	19	3	36
Bromley	4	3	9	18	3	37
Croydon	8	4	13	17	3	45
Sutton	1	1	7	13	1	23
Merton	2	1	9	8	2	22
Kingston	1	1	3	10	1	16
Richmond	1	1	3	4	0	9
Hounslow	6	2	8	12	1	29
Hillingdon	4	4	7	11	3	29
Ealing	9	4	18	9	0	40
Brent	1	2	13	9	2	27
Harrow	1	0	3	4	0	8
Barnet	2	7	13	16	2	40
Haringey	12	1	24	15	6	58
Enfield	3	2	10	7	3	25
Total Outer	90	51	193	220	53	607
Greater London	157	104	513	432	124	1,330

Table 3.24 Pedestrian casualties in the Greater London area in 2009 tabulated by associated vehicle type and time of day

Time	Motor cycle										Goods			Other		Total		
	Pedal cycle		50 to 125cc		125cc to 500cc		over 500cc		Bus or up to 3.5t		3.5 - 7.5t		over 7.5t		Other motor vehicle		Other non-motor vehicle	
	up to 50cc	50cc to 125cc	125cc to 500cc	500cc to 125cc	125cc to 500cc	over 500cc	MGW	coach	MGW	MGW	MGW	MGW	MGW					
00.00-00.59	0	1	2	0	0	0	0	0	70	16	15	4	0	0	2	1	0	111
01.00-01.59	0	1	1	0	0	2	41	7	9	9	2	0	0	0	0	1	0	64
02.00-02.59	0	0	0	0	0	0	37	12	11	2	2	0	0	3	0	0	0	65
03.00-03.59	0	0	1	1	0	0	39	5	4	3	0	0	1	0	0	0	0	54
04.00-04.59	0	0	0	0	0	0	21	2	7	5	1	0	0	1	0	1	0	37
05.00-05.59	0	0	1	0	0	0	12	2	3	4	0	0	1	1	1	1	0	24
06.00-06.59	1	0	2	0	0	3	42	1	2	9	1	1	1	1	1	1	0	63
07.00-07.59	6	0	7	2	6	6	101	6	12	13	0	0	4	3	6	0	0	160
08.00-08.59	22	4	17	5	16	16	206	10	16	20	1	3	6	0	0	0	0	326
09.00-09.59	7	2	17	2	14	156	10	20	27	2	2	2	2	1	1	0	0	260
10.00-10.59	4	1	3	1	6	118	8	13	24	4	2	3	3	0	3	0	0	187
11.00-11.59	4	0	8	2	7	159	5	22	23	0	0	5	3	0	3	0	0	238
12.00-12.59	7	3	8	2	8	169	13	25	31	4	4	5	6	0	6	0	0	281
13.00-13.59	8	2	10	3	13	212	10	30	31	5	6	3	0	0	3	0	0	333
14.00-14.59	3	1	12	5	8	204	13	34	27	2	6	1	0	0	1	0	0	316
15.00-15.59	11	3	17	4	12	369	12	44	39	1	6	2	0	0	2	0	0	520
16.00-16.59	4	5	21	10	20	317	10	39	32	3	4	4	0	0	4	0	0	469
17.00-17.59	18	5	16	4	22	279	9	31	25	1	2	6	0	0	6	0	0	418
18.00-18.59	18	4	17	4	23	254	15	24	12	0	3	2	0	0	2	0	0	376
19.00-19.59	3	2	14	5	4	199	17	17	8	1	2	3	0	0	3	0	0	275
20.00-20.59	3	1	9	2	9	139	7	9	10	0	0	2	0	0	2	0	0	191
21.00-21.59	4	3	10	1	2	135	8	13	3	1	0	2	1	0	2	1	0	183
22.00-22.59	2	0	5	2	2	105	8	7	4	0	0	0	0	0	0	0	0	135
23.00-23.59	1	0	2	2	2	84	12	12	5	2	0	1	0	0	1	0	0	123
Total	126	38	200	57	179	3,468	218	419	363	29	58	53	1	5,209	1	53	1	5,209

Table 3.25 Casualties in the Greater London area in 2009 tabulated by casualty class, gender and borough

Borough	Driver		Passenger		Pedestrian		Total
	Male	Female	Male	Female	Male	Female	
City of London	182	34	17	21	49	40	343
Westminster	751	177	100	123	213	206	1,570
Camden	399	104	62	69	147	127	908
Islington	410	124	40	67	97	73	811
Hackney	421	155	57	113	97	79	922
Tower Hamlets	468	100	57	69	116	82	892
Greenwich	397	158	70	114	66	67	872
Lewisham	433	177	70	98	108	86	972
Southwark	539	173	67	119	115	95	1,108
Lambeth	651	187	67	130	134	116	1,285
Wandsworth	508	145	49	57	97	76	932
Hammersmith and Fulham	403	85	39	50	72	73	722
Kensington and Chelsea	375	104	43	69	84	90	765
Total Inner	5,937	1,723	738	1,099	1,395	1,210	12,102
Waltham Forest	339	115	70	91	72	49	736
Redbridge	319	155	84	87	68	55	768
Havering	271	186	79	124	54	34	748
Barking and Dagenham	234	101	44	75	40	30	524
Newham	424	124	74	127	122	75	946
Bexley	253	154	50	92	51	32	632
Bromley	390	205	70	108	52	52	877
Croydon	468	228	84	159	112	91	1,142
Sutton	197	110	45	55	42	34	483
Merton	226	75	31	56	49	38	475
Kingston	204	99	31	54	41	32	461
Richmond	244	90	16	32	35	28	445
Hounslow	418	172	70	96	72	51	879
Hillingdon	428	194	101	126	76	46	971
Ealing	532	177	92	103	94	81	1,079
Brent	396	97	68	82	117	89	849
Harrow	208	106	43	51	48	52	508
Barnet	620	307	113	148	117	98	1,403
Haringey	391	133	91	110	110	94	929
Enfield	416	194	97	144	96	75	1,022
Total Outer	6,978	3,022	1,353	1,920	1,468	1,136	15,877
Greater London	12,915	4,745	2,091	3,019	2,863	2,346	27,979

Table 3.26 Casualties in the Greater London area in 2009 tabulated by highway authority and borough

Borough	Highways		Borough	Total
	TLRN ¹	Agency		
City of London	142	0	201	343
Westminster	415	0	1,155	1,570
Camden	265	0	643	908
Islington	362	0	449	811
Hackney	434	0	488	922
Tower Hamlets	517	0	375	892
Greenwich	303	0	569	872
Lewisham	479	0	493	972
Southwark	471	0	637	1,108
Lambeth	761	0	524	1,285
Wandsworth	487	0	445	932
Hammersmith and Fulham	66	0	656	722
Kensington and Chelsea	242	0	523	765
Total Inner	4,944	0	7,158	12,102
Waltham Forest	93	0	643	736
Redbridge	211	7	550	768
Havering	118	60	570	748
Barking and Dagenham	110	0	414	524
Newham	142	0	804	946
Bexley	59	0	573	632
Bromley	100	0	777	877
Croydon	220	0	922	1,142
Sutton	156	0	327	483
Merton	89	0	386	475
Kingston	105	0	356	461
Richmond	109	0	336	445
Hounslow	349	42	488	879
Hillingdon	149	77	745	971
Ealing	297	0	782	1,079
Brent	54	0	795	849
Harrow	0	0	508	508
Barnet	390	27	986	1,403
Haringey	198	0	731	929
Enfield	214	60	748	1,022
Total Outer	3,163	273	12,441	15,877
Greater London	8,107	273	19,599	27,979

¹ TLRN is the Transport for London Road Network.

Note: the highway authority is allocated according to the category of the road at which the collision occurred. For a collision occurring at a junction where the collision cannot be clearly allocated to a particular road the highway authority of the major road is chosen.

Table 3.27 Pedal cycle rider and passenger casualties in the Greater London area in 2009 tabulated by age group and borough

Borough	0-15 years	16-24 years	25-59 years	60+ years	Unknown	Total
City of London	0	13	81	1	15	110
Westminster	3	26	239	11	24	303
Camden	5	25	123	5	9	167
Islington	5	33	168	7	17	230
Hackney	6	21	151	4	10	192
Tower Hamlets	9	19	117	1	12	158
Greenwich	4	17	44	4	4	73
Lewisham	10	14	85	2	4	115
Southwark	9	29	170	4	10	222
Lambeth	13	30	217	7	8	275
Wandsworth	13	19	160	5	8	205
Hammersmith and Fulham	12	17	115	4	8	156
Kensington and Chelsea	5	24	129	4	10	172
Total Inner	94	287	1,799	59	139	2,378
Waltham Forest	15	11	59	1	7	93
Redbridge	9	4	25	2	1	41
Havering	13	4	9	0	5	31
Barking and Dagenham	9	4	13	0	2	28
Newham	12	14	52	2	5	85
Bexley	10	5	18	0	1	34
Bromley	6	8	38	5	6	63
Croydon	11	13	49	3	6	82
Sutton	3	10	23	2	4	42
Merton	4	10	39	2	7	62
Kingston	7	8	47	4	3	69
Richmond	4	9	78	3	5	99
Hounslow	11	11	51	6	4	83
Hillingdon	18	18	29	2	5	72
Ealing	9	17	72	6	7	111
Brent	5	11	47	1	5	69
Harrow	4	9	17	1	0	31
Barnet	8	6	43	0	5	62
Haringey	9	16	65	1	5	96
Enfield	7	10	19	1	1	38
Total Outer	174	198	793	42	84	1,291
Greater London	268	485	2,592	101	223	3,669

Table 3.28 Powered two wheeler rider and passenger casualties in the Greater London area in 2009 tabulated by age group and borough

Borough	0-15 years	16-24 years	25-59 years	60+ years	Unknown	Total
City of London	0	9	58	2	4	73
Westminster	2	45	278	4	18	347
Camden	0	26	151	2	6	185
Islington	3	25	100	5	15	148
Hackney	0	29	112	1	8	150
Tower Hamlets	2	25	119	1	12	159
Greenwich	1	32	94	3	5	135
Lewisham	0	28	140	9	4	181
Southwark	1	42	170	3	14	230
Lambeth	1	46	228	8	14	297
Wandsworth	2	43	194	6	12	257
Hammersmith and Fulham	2	35	144	2	10	193
Kensington and Chelsea	2	25	159	2	7	195
Total Inner	16	410	1,947	48	129	2,550
Waltham Forest	0	21	44	2	2	69
Redbridge	0	11	56	2	2	71
Havering	0	19	34	3	3	59
Barking and Dagenham	2	18	36	0	3	59
Newham	0	20	55	4	9	88
Bexley	1	28	39	2	2	72
Bromley	0	31	69	3	5	108
Croydon	2	38	92	4	8	144
Sutton	0	15	34	4	4	57
Merton	0	14	63	3	6	86
Kingston	0	25	42	1	3	71
Richmond	0	21	74	7	3	105
Hounslow	0	39	95	0	6	140
Hillingdon	0	28	43	1	5	77
Ealing	1	52	127	4	6	190
Brent	0	33	100	0	10	143
Harrow	0	13	28	1	4	46
Barnet	0	27	110	2	8	147
Haringey	0	33	105	2	7	147
Enfield	0	16	54	1	1	72
Total Outer	6	502	1,300	46	97	1,951
Greater London	22	912	3,247	94	226	4,501

Table 3.29 Child casualties (0-15 years) in the Greater London area in 2009 by severity, highway authority and borough

Borough	TLRN ¹				Borough				All roads ²			
	Fatal	Serious	Slight	Total	Fatal	Serious	Slight	Total	Fatal	Serious	Slight	Total
City of London	0	1	2	3	0	0	5	5	0	1	7	8
Westminster	0	4	11	15	0	3	23	26	0	7	34	41
Camden	0	2	11	13	0	7	23	30	0	9	34	43
Islington	0	2	11	13	0	3	22	25	0	5	33	38
Hackney	0	2	13	15	0	2	32	34	0	4	45	49
Tower Hamlets	0	4	19	23	1	7	27	35	1	11	46	58
Greenwich	1	4	14	19	1	6	48	55	2	10	62	74
Lewisham	0	2	25	27	0	6	45	51	0	8	70	78
Southwark	0	2	22	24	0	6	61	67	0	8	83	91
Lambeth	0	7	25	32	0	14	39	53	0	21	64	85
Wandsworth	0	6	20	26	0	0	32	32	0	6	52	58
Hammersmith and Fulham	0	1	2	3	0	6	37	43	0	7	39	46
Kensington and Chelsea	0	0	6	6	0	6	27	33	0	6	33	39
Total Inner	1	37	181	219	2	66	421	489	3	103	602	708
Waltham Forest	0	0	1	1	0	7	70	77	0	7	71	78
Redbridge	0	1	5	6	0	5	62	67	0	6	67	73
Havering	0	1	11	12	0	8	52	60	0	9	66	75
Barking and Dagenham	0	0	6	6	0	3	58	61	0	3	64	67
Newham	0	0	8	8	0	11	79	90	0	11	87	98
Bexley	0	0	1	1	0	14	44	58	0	14	45	59
Bromley	0	0	6	6	0	7	46	53	0	7	52	59
Croydon	0	2	17	19	0	17	78	95	0	19	95	114
Sutton	0	1	6	7	0	5	23	28	0	6	29	35
Merton	0	1	7	8	0	1	28	29	0	2	35	37
Kingston	0	0	3	3	0	3	34	37	0	3	37	40
Richmond	0	0	3	3	0	1	16	17	0	1	19	20
Hounslow	0	3	18	21	0	6	40	46	0	10	59	69
Hillingdon	0	0	7	7	0	6	71	77	0	6	79	85
Ealing	0	0	13	13	2	9	64	75	2	9	77	88
Brent	0	0	4	4	0	11	58	69	0	11	62	73
Harrow	0	0	0	0	0	4	43	47	0	4	43	47
Barnet	0	1	6	7	0	4	68	72	0	6	74	80
Haringey	0	2	10	12	1	10	67	78	1	12	77	90
Enfield	0	0	10	10	0	8	75	83	0	8	87	95
Total Outer	0	12	142	154	3	140	1076	1219	3	154	1225	1382
Greater London	1	49	323	373	5	206	1497	1708	6	257	1827	2090

¹ TLRN is the Transport for London Road Network.

² Includes Highways Agency roads

Note: the highway authority is allocated according to the category of the road at which the collision occurred. For a collision occurring at a junction where the collision cannot be clearly allocated to a particular road the highway authority of the major road is chosen.

Table 3.30 Child pedestrian casualties (0-15 years) in the Greater London area in 2009 by severity, highway authority and borough

Borough	TLRN ¹				Borough				All roads ²			
	Fatal	Serious	Slight	Total	Fatal	Serious	Slight	Total	Fatal	Serious	Slight	Total
City of London	0	1	2	3	0	0	1	1	0	1	3	4
Westminster	0	2	2	4	0	2	12	14	0	4	14	18
Camden	0	2	3	5	0	7	11	18	0	9	14	23
Islington	0	2	4	6	0	2	13	15	0	4	17	21
Hackney	0	2	6	8	0	2	21	23	0	4	27	31
Tower Hamlets	0	4	8	12	0	4	17	21	0	8	25	33
Greenwich	1	0	3	4	1	5	30	36	2	5	33	40
Lewisham	0	2	14	16	0	6	23	29	0	8	37	45
Southwark	0	2	10	12	0	4	34	38	0	6	44	50
Lambeth	0	3	9	12	0	9	23	32	0	12	32	44
Wandsworth	0	5	8	13	0	0	15	15	0	5	23	28
Hammersmith and Fulham	0	0	0	0	0	4	20	24	0	4	20	24
Kensington and Chelsea	0	0	1	1	0	3	20	23	0	3	21	24
Total Inner	1	25	70	96	1	48	240	289	2	73	310	385
Waltham Forest	0	0	0	0	0	6	28	34	0	6	28	34
Redbridge	0	0	0	0	0	1	36	37	0	1	36	37
Havering	0	0	1	1	0	4	21	25	0	4	22	26
Barking and Dagenham	0	0	1	1	0	1	25	26	0	1	26	27
Newham	0	0	1	1	0	11	37	48	0	11	38	49
Bexley	0	0	0	0	0	5	22	27	0	5	22	27
Bromley	0	0	3	3	0	3	22	25	0	3	25	28
Croydon	0	2	4	6	0	10	39	49	0	12	43	55
Sutton	0	1	4	5	0	4	13	17	0	5	17	22
Merton	0	1	0	1	0	1	16	17	0	2	16	18
Kingston	0	0	1	1	0	2	18	20	0	2	19	21
Richmond	0	0	1	1	0	1	10	11	0	1	11	12
Hounslow	0	1	2	3	0	4	21	25	0	5	23	28
Hillingdon	0	0	0	0	0	3	28	31	0	3	28	31
Ealing	0	0	0	0	1	6	32	39	1	6	32	39
Brent	0	0	0	0	0	8	41	49	0	8	41	49
Harrow	0	0	0	0	0	4	25	29	0	4	25	29
Barnet	0	0	1	1	0	3	38	41	0	3	39	42
Haringey	0	1	5	6	1	7	30	38	1	8	35	44
Enfield	0	0	1	1	0	7	46	53	0	7	47	54
Total Outer	0	6	25	31	2	91	548	641	2	97	573	672
Greater London	1	31	95	127	3	139	788	930	4	170	883	1057

¹ TLRN is the Transport for London Road Network.

² Includes Highways Agency roads

Note: the highway authority is allocated according to the category of the road at which the collision occurred. For a collision occurring at a junction where the collision cannot be clearly allocated to a particular road the highway authority of the major road is chosen.

Table 3.31 Casualties in Greater London on the TLRN¹ in 2009 by mode of travel and borough

Borough	Pedest- rians	Pedal cyclists	Powered two wheelers	Car	Taxi	Bus or coach	Goods vehicle	Other	Total
City of London	23	50	36	18	2	7	6	0	142
Westminster	65	65	105	106	21	41	9	3	415
Camden	68	40	45	61	21	26	2	2	265
Islington	79	92	71	76	13	24	7	0	362
Hackney	81	82	74	136	13	40	8	0	434
Tower Hamlets	95	76	107	199	8	21	8	3	517
Greenwich	14	21	61	188	5	4	9	1	303
Lewisham	79	63	111	169	7	41	8	1	479
Southwark	84	108	120	107	6	40	5	1	471
Lambeth	131	169	196	188	11	56	8	2	761
Wandsworth	84	101	155	113	8	18	5	3	487
Hammersmith and Fulham	2	9	13	38	2	1	1	0	66
Kensington and Chelsea	39	38	67	69	15	7	7	0	242
Total Inner	844	914	1,161	1,468	132	326	83	16	4,944
Waltham Forest	1	3	1	75	1	1	10	1	93
Redbridge	10	8	32	145	1	3	11	1	211
Havering	3	3	10	90	1	2	8	1	118
Barking and Dagenham	3	1	13	77	0	4	12	0	110
Newham	6	2	19	102	0	5	8	0	142
Bexley	0	2	4	51	1	0	1	0	59
Bromley	9	10	22	52	0	7	0	0	100
Croydon	23	24	49	107	1	15	1	0	220
Sutton	19	9	21	93	0	8	6	0	156
Merton	8	7	21	40	0	9	3	1	89
Kingston	6	5	13	74	3	1	3	0	105
Richmond	9	20	34	41	1	1	3	0	109
Hounslow	20	23	56	228	10	2	8	2	349
Hillingdon	5	4	6	118	3	3	9	1	149
Ealing	15	4	68	185	6	6	13	0	297
Brent	2	2	14	31	0	0	5	0	54
Harrow	0	0	0	0	0	0	0	0	0
Barnet	13	7	46	296	8	3	15	2	390
Haringey	39	22	42	74	1	15	4	1	198
Enfield	12	3	14	167	4	4	10	0	214
Total Outer	203	159	485	2,046	41	89	130	10	3,163
Greater London	1,047	1,073	1,646	3,514	173	415	213	26	8,107

¹ TLRN is the Transport for London Road Network.

Note: the highway authority is allocated according to the category of the road at which the collision occurred. For a collision occurring at a junction where the collision cannot be clearly allocated to a particular road the highway authority of the major road is chosen.

Table 3.32 Casualties in Greater London on borough roads in 2009 by mode of travel and borough

Borough	Pedestrians	Pedal cyclists	Powered two wheelers	Car	Bus or Goods			Other	Total
					Taxi	coach	vehicle		
City of London	66	60	37	15	6	15	2	0	201
Westminster	354	238	242	169	38	88	17	9	1,155
Camden	206	127	140	113	19	31	3	4	643
Islington	91	138	77	96	6	34	6	1	449
Hackney	95	110	76	143	12	41	10	1	488
Tower Hamlets	103	82	52	113	9	12	4	0	375
Greenwich	119	52	74	266	1	39	16	2	569
Lewisham	115	52	70	218	4	20	10	4	493
Southwark	126	114	110	207	13	54	12	1	637
Lambeth	119	106	101	159	4	24	10	1	524
Wandsworth	89	104	102	121	9	14	6	0	445
Hammersmith and Fulham	143	147	180	126	7	45	7	1	656
Kensington and Chelsea	135	134	128	76	13	35	1	1	523
Total Inner	1,761	1,464	1,389	1,822	141	452	104	25	7,158
Waltham Forest	120	90	68	297	8	43	12	5	643
Redbridge	113	33	38	330	5	14	13	4	550
Havering	82	28	46	344	6	43	12	9	570
Barking and Dagenham	67	27	46	246	6	14	7	1	414
Newham	191	83	69	382	18	52	6	3	804
Bexley	83	32	68	331	3	38	12	6	573
Bromley	95	53	86	482	0	36	22	3	777
Croydon	180	58	95	530	2	36	16	5	922
Sutton	57	33	36	174	1	16	10	0	327
Merton	79	55	65	155	10	15	6	1	386
Kingston	67	64	58	143	1	17	5	1	356
Richmond	54	79	71	116	1	8	7	0	336
Hounslow	103	60	75	212	0	28	7	3	488
Hillingdon	117	68	65	445	3	30	12	5	745
Ealing	160	107	122	325	4	36	22	6	782
Brent	204	67	129	338	4	29	19	5	795
Harrow	100	31	46	312	3	8	6	2	508
Barnet	202	55	99	559	2	44	22	3	986
Haringey	165	74	105	315	7	45	18	2	731
Enfield	159	35	57	450	6	24	12	5	748
Total Outer	2,398	1,132	1,444	6,486	90	576	246	69	12,441
Greater London	4,159	2,596	2,833	8,308	231	1,028	350	94	19,599

Note: the highway authority is allocated according to the category of the road at which the collision occurred. For a collision occurring at a junction where the collision cannot be clearly allocated to a particular road the highway authority of the major road is chosen.

Table 3.33 Casualties in Greater London on Highways Agency roads in 2009 by mode of travel and borough

Borough	Pedestrians	Pedal cyclists	Powered two wheelers	Car	Taxi	Bus or coach	Goods vehicle	Other	Total
City of London	0	0	0	0	0	0	0	0	0
Westminster	0	0	0	0	0	0	0	0	0
Camden	0	0	0	0	0	0	0	0	0
Islington	0	0	0	0	0	0	0	0	0
Hackney	0	0	0	0	0	0	0	0	0
Tower Hamlets	0	0	0	0	0	0	0	0	0
Greenwich	0	0	0	0	0	0	0	0	0
Lewisham	0	0	0	0	0	0	0	0	0
Southwark	0	0	0	0	0	0	0	0	0
Lambeth	0	0	0	0	0	0	0	0	0
Wandsworth	0	0	0	0	0	0	0	0	0
Hammersmith and Fulham	0	0	0	0	0	0	0	0	0
Kensington and Chelsea	0	0	0	0	0	0	0	0	0
Total Inner	0	0	0	0	0	0	0	0	0
Waltham Forest	0	0	0	0	0	0	0	0	0
Redbridge	0	0	1	5	0	0	1	0	7
Havering	3	0	3	49	0	0	5	0	60
Barking and Dagenham	0	0	0	0	0	0	0	0	0
Newham	0	0	0	0	0	0	0	0	0
Bexley	0	0	0	0	0	0	0	0	0
Bromley	0	0	0	0	0	0	0	0	0
Croydon	0	0	0	0	0	0	0	0	0
Sutton	0	0	0	0	0	0	0	0	0
Merton	0	0	0	0	0	0	0	0	0
Kingston	0	0	0	0	0	0	0	0	0
Richmond	0	0	0	0	0	0	0	0	0
Hounslow	0	0	9	29	3	0	0	1	42
Hillingdon	0	0	6	67	1	0	2	1	77
Ealing	0	0	0	0	0	0	0	0	0
Brent	0	0	0	0	0	0	0	0	0
Harrow	0	0	0	0	0	0	0	0	0
Barnet	0	0	2	22	0	0	3	0	27
Haringey	0	0	0	0	0	0	0	0	0
Enfield	0	0	1	54	1	0	4	0	60
Total Outer	3	0	22	226	5	0	15	2	273
Greater London	3	0	22	226	5	0	15	2	273

Note: the highway authority is allocated according to the category of the road at which the collision occurred. For a collision occurring at a junction where the collision cannot be clearly allocated to a particular road the highway authority of the major road is chosen.

Table 3.34 Casualties in Greater London on all roads in 2009 by mode of travel and borough

Borough	Pedest- rians	Pedal cyclists	Powered two wheelers	Car	Taxi	Bus or coach	Goods vehicle	Other	Total
City of London	89	110	73	33	8	22	8	0	343
Westminster	419	303	347	275	59	129	26	12	1,570
Camden	274	167	185	174	40	57	5	6	908
Islington	170	230	148	172	19	58	13	1	811
Hackney	176	192	150	279	25	81	18	1	922
Tower Hamlets	198	158	159	312	17	33	12	3	892
Greenwich	133	73	135	454	6	43	25	3	872
Lewisham	194	115	181	387	11	61	18	5	972
Southwark	210	222	230	314	19	94	17	2	1,108
Lambeth	250	275	297	347	15	80	18	3	1,285
Wandsworth	173	205	257	234	17	32	11	3	932
Hammersmith and Fulham	145	156	193	164	9	46	8	1	722
Kensington and Chelsea	174	172	195	145	28	42	8	1	765
Total Inner	2,605	2,378	2,550	3,290	273	778	187	41	12,102
Waltham Forest	121	93	69	372	9	44	22	6	736
Redbridge	123	41	71	480	6	17	25	5	768
Havering	88	31	59	483	7	45	25	10	748
Barking and Dagenham	70	28	59	323	6	18	19	1	524
Newham	197	85	88	484	18	57	14	3	946
Bexley	83	34	72	382	4	38	13	6	632
Bromley	104	63	108	534	0	43	22	3	877
Croydon	203	82	144	637	3	51	17	5	1,142
Sutton	76	42	57	267	1	24	16	0	483
Merton	87	62	86	195	10	24	9	2	475
Kingston	73	69	71	217	4	18	8	1	461
Richmond	63	99	105	157	2	9	10	0	445
Hounslow	123	83	140	469	13	30	15	6	879
Hillingdon	122	72	77	630	7	33	23	7	971
Ealing	175	111	190	510	10	42	35	6	1,079
Brent	206	69	143	369	4	29	24	5	849
Harrow	100	31	46	312	3	8	6	2	508
Barnet	215	62	147	877	10	47	40	5	1,403
Haringey	204	96	147	389	8	60	22	3	929
Enfield	171	38	72	671	11	28	26	5	1,022
Total Outer	2,604	1,291	1,951	8,758	136	665	391	81	15,877
Greater London	5,209	3,669	4,501	12,048	409	1,443	578	122	27,979

Vehicle data 2009

Table 4.1 Vehicles involved in collisions in the Greater London area in 2009 tabulated by vehicle type and borough

Borough	Motor cycle					Bus or up to 3.5t			Goods			Other		Total	
	Pedal cycle		50cc to 125cc		over 500cc	coach	MGW	MGW	MGW	MGW	MGW	MGW	MGW		MGW
	up to 50cc	50 to 125cc	125cc	125 to 500cc	500cc	up to 3.5t	3.5 - 7.5t	7.5t over 7.5t	up to 3.5t	3.5 - 7.5t	7.5t over 7.5t	motor vehicle	non-motor vehicle		
City of London	119	5	39	8	34	126	66	36	42	5	13	10	0	503	
Westminster	331	29	169	62	133	872	240	222	158	16	24	37	5	2,298	
Camden	181	14	105	25	77	565	106	99	89	13	9	25	1	1,309	
Islington	238	24	74	27	53	618	42	74	78	10	9	4	0	1,251	
Hackney	196	27	78	19	48	794	36	103	85	6	4	10	0	1,406	
Tower Hamlets	158	8	67	25	73	800	41	53	80	8	10	9	1	1,333	
Greenwich	73	5	45	17	75	820	7	63	101	5	18	8	1	1,238	
Lewisham	115	13	83	18	79	939	17	91	77	7	16	9	0	1,464	
Southwark	232	20	120	25	91	880	40	118	117	11	19	8	0	1,681	
Lambeth	281	26	120	35	136	1,096	38	120	129	8	13	13	0	2,015	
Wandsworth	210	41	129	16	102	786	36	57	77	7	6	6	0	1,473	
Hammersmith and Fulham	163	22	111	13	64	578	27	55	60	6	13	7	0	1,119	
Kensington and Chelsea	179	29	107	15	68	531	80	66	74	11	6	7	0	1,173	
Total Inner	2,476	263	1,247	305	1,033	9,405	776	1,157	1,167	113	160	153	8	18,263	
Waltham Forest	97	7	37	12	20	768	10	46	47	1	9	6	0	1,060	
Redbridge	41	6	27	11	32	898	14	32	58	6	8	7	0	1,140	
Havering	31	7	26	4	23	826	13	46	58	7	15	18	0	1,074	
Barking and Dagenham	29	7	23	5	27	581	7	22	52	4	7	4	0	768	
Newham	86	9	30	21	37	994	25	74	49	5	17	9	0	1,356	
Bexley	36	9	31	7	28	635	6	51	52	4	9	10	1	879	
Bromley	65	8	32	5	67	911	2	55	65	6	1	7	0	1,224	
Croydon	82	8	70	9	62	1,163	7	74	81	5	3	5	0	1,569	
Sutton	45	3	18	8	32	513	3	30	49	4	7	1	0	713	
Merton	65	13	36	13	30	452	17	26	44	3	9	5	0	713	
Kingston	71	8	34	4	31	479	7	30	32	1	3	4	0	704	
Richmond	100	13	32	9	57	431	6	20	37	5	2	3	0	715	
Hounslow	85	16	60	12	59	944	24	50	67	3	15	11	0	1,346	
Hillingdon	72	14	26	11	32	1,055	10	45	60	7	23	13	1	1,369	
Ealing	114	23	91	6	77	1,147	21	64	92	10	44	10	0	1,699	
Brent	71	26	73	23	44	828	15	54	71	6	13	15	0	1,239	
Harrow	32	4	20	6	18	568	6	12	27	2	4	5	0	704	
Barnet	65	12	55	15	76	1,538	18	64	137	9	29	10	0	2,028	
Haringey	101	17	74	25	50	844	22	79	67	8	10	8	1	1,306	
Enfield	40	6	29	13	27	1,061	21	46	82	7	34	12	0	1,378	
Total Outer	1,328	216	824	219	829	16,636	254	920	1,227	103	262	163	3	22,984	
Greater London	3,804	479	2,071	524	1,862	26,041	1,030	2,077	2,394	216	422	316	11	41,247	

Table 4.2 Vehicles involved in collisions in the Greater London area in 2009 tabulated by driver age and borough

Borough	under 17 years	17 years	18 years	19 years	20 years	21 years	22-24 years	25-28 years	29-34 years	35-54 years	55-64 years	65+ years	Not known	Total
City of London	0	0	1	0	2	4	26	55	68	203	37	6	101	503
Westminster	8	9	8	13	20	23	120	215	350	820	178	58	476	2,298
Camden	8	7	6	8	12	13	52	140	174	491	84	41	273	1,309
Islington	10	5	9	10	23	17	57	123	204	415	83	30	265	1,251
Hackney	7	5	13	13	21	20	86	164	222	457	76	27	295	1,406
Tower Hamlets	11	7	6	22	14	27	79	157	197	402	46	21	344	1,333
Greenwich	9	10	17	20	23	21	78	105	151	448	90	38	228	1,238
Lewisham	12	7	10	20	30	24	98	123	186	566	97	49	242	1,464
Southwark	12	2	10	17	14	29	110	161	254	615	104	32	321	1,681
Lambeth	16	3	10	17	31	37	121	200	319	720	117	49	375	2,015
Wandsworth	17	6	13	17	21	18	70	171	239	525	79	39	258	1,473
Hammersmith and Fulham	14	11	7	15	9	13	57	116	185	377	66	27	222	1,119
Kensington and Chelsea	12	6	4	11	15	12	48	113	195	431	84	31	211	1,173
Total Inner	136	78	114	183	235	258	1,002	1,843	2,744	6,470	1,141	448	3,611	18,263
Waltham Forest	20	5	10	15	24	26	63	89	145	324	57	41	241	1,060
Redbridge	9	7	17	19	22	28	75	102	129	365	73	43	251	1,140
Havering	15	16	36	32	26	21	69	68	108	342	85	47	209	1,074
Barking and Dagenham	14	5	17	20	14	20	43	62	92	252	48	23	158	768
Newham	15	6	19	18	26	36	95	142	185	423	51	25	315	1,356
Bexley	14	17	30	19	25	23	59	64	98	294	74	32	130	879
Bromley	9	19	38	32	33	19	76	83	109	391	99	93	223	1,224
Croydon	19	12	24	20	31	47	91	147	167	525	91	66	329	1,569
Sutton	6	10	15	20	18	18	39	64	89	219	57	34	124	713
Merton	3	1	6	12	12	24	58	65	87	227	50	28	140	713
Kingston	10	12	17	13	19	14	48	58	80	236	51	36	110	704
Richmond	11	9	6	10	14	13	41	60	106	227	51	48	119	715
Hounslow	22	18	25	21	19	23	78	147	174	449	86	43	241	1,346
Hillingdon	25	18	47	33	38	25	75	106	153	452	83	55	259	1,369
Ealing	17	8	19	21	32	37	98	179	261	517	110	55	345	1,699
Brent	9	4	15	13	22	19	75	135	168	433	75	39	232	1,239
Harrow	9	10	17	12	20	11	39	50	90	213	51	45	137	704
Barnet	15	20	30	30	41	50	97	194	254	638	134	104	421	2,028
Haringey	13	5	14	14	19	29	79	121	176	437	73	41	285	1,306
Enfield	11	12	29	35	38	36	88	121	162	436	72	52	286	1,378
Total Outer	266	214	431	409	493	519	1,386	2,057	2,833	7,400	1,471	950	4,555	22,984
Greater London	402	292	545	592	728	777	2,388	3,900	5,577	13,870	2,612	1,398	8,166	41,247

Table 4.3 Vehicles involved in collisions in the Greater London area in 2009 tabulated by skidding/overturning and borough

Borough	Skidded &		Jack-knifed		Overturned	No skid/ overturn	Total
	Skidded	overturned	Jack-knifed	& overturned			
City of London	16	1	0	0	0	486	503
Westminster	82	3	0	0	4	2,209	2,298
Camden	42	1	0	0	5	1,261	1,309
Islington	23	1	0	0	2	1,225	1,251
Hackney	43	1	0	0	4	1,358	1,406
Tower Hamlets	32	0	0	0	4	1,297	1,333
Greenwich	38	6	0	0	5	1,189	1,238
Lewisham	24	2	0	0	1	1,437	1,464
Southwark	31	2	0	0	2	1,646	1,681
Lambeth	44	2	0	0	0	1,969	2,015
Wandsworth	52	5	0	0	2	1,414	1,473
Hammersmith and Fulham	37	2	0	0	0	1,080	1,119
Kensington and Chelsea	46	1	0	0	1	1,125	1,173
Total Inner	510	27	0	0	30	17,696	18,263
Waltham Forest	42	4	0	0	4	1,010	1,060
Redbridge	39	1	0	0	4	1,096	1,140
Havering	63	4	0	0	15	992	1,074
Barking and Dagenham	24	1	0	0	5	738	768
Newham	60	3	0	0	5	1,288	1,356
Bexley	22	2	0	0	5	850	879
Bromley	46	14	0	0	11	1,153	1,224
Croydon	62	8	0	0	5	1,494	1,569
Sutton	8	2	0	0	1	702	713
Merton	30	2	0	0	2	679	713
Kingston	30	3	0	0	3	668	704
Richmond	32	3	0	0	2	678	715
Hounslow	54	14	0	0	6	1,272	1,346
Hillingdon	37	7	1	0	4	1,320	1,369
Ealing	48	7	0	0	5	1,639	1,699
Brent	30	3	0	0	4	1,202	1,239
Harrow	30	4	0	0	6	664	704
Barnet	66	9	0	0	7	1,946	2,028
Haringey	30	0	0	0	1	1,275	1,306
Enfield	48	5	0	0	6	1,319	1,378
Total Outer	801	96	1	0	101	21,985	22,984
Greater London	1,311	123	1	0	131	39,681	41,247

Table 4.4 Drivers of motor vehicles involved in collisions in the Greater London area in 2009 tabulated by breath test and borough

Borough	Positive	Negative	Not required	Failed to provide	Driver not contacted	Not provided (medical reasons)	Total
City of London	4	186	47	0	135	12	384
Westminster	13	870	444	0	554	81	1,962
Camden	8	486	255	2	334	42	1,127
Islington	5	400	334	0	249	25	1,013
Hackney	17	302	530	0	318	48	1,215
Tower Hamlets	5	356	368	2	395	49	1,175
Greenwich	9	453	382	4	273	43	1,164
Lewisham	5	618	368	1	307	50	1,349
Southwark	13	437	564	2	388	45	1,449
Lambeth	16	546	662	3	441	66	1,734
Wandsworth	3	449	466	0	293	53	1,264
Hammersmith and Fulham	5	410	242	0	262	37	956
Kensington and Chelsea	5	408	313	1	227	40	994
Total Inner	108	5,921	4,975	15	4,176	591	15,786
Waltham Forest	14	258	368	0	292	33	965
Redbridge	12	326	410	1	309	42	1,100
Havering	10	389	311	0	287	47	1,044
Barking and Dagenham	8	212	295	1	189	34	739
Newham	15	389	466	2	368	34	1,274
Bexley	10	379	230	2	186	35	842
Bromley	11	552	253	2	258	83	1,159
Croydon	8	444	573	0	388	74	1,487
Sutton	5	274	233	1	127	28	668
Merton	3	268	196	0	154	27	648
Kingston	5	313	146	2	145	22	633
Richmond	2	262	195	0	133	23	615
Hounslow	10	458	450	3	287	53	1,261
Hillingdon	13	379	471	2	375	56	1,296
Ealing	14	496	587	5	422	62	1,586
Brent	2	308	595	2	216	45	1,168
Harrow	3	160	331	0	150	28	672
Barnet	9	714	648	3	512	77	1,963
Haringey	5	549	315	2	284	49	1,204
Enfield	1	432	416	1	417	71	1,338
Total Outer	160	7,562	7,489	29	5,499	923	21,662
Greater London	268	13,483	12,464	44	9,675	1,514	37,448

Table 4.5 Vehicles involved in collisions in the Greater London area in 2009 by manoeuvre and borough*Note: This table is continued on the next page*

Borough	Parked	Stopping	Starting	Turning round	Turning left or waiting to turn	Turning right or waiting to turn	Going ahead but held up	Going ahead overtaking	Sub- total
City of London	12	30	22	20	33	51	33	44	245
Westminster	85	159	120	65	148	249	121	141	1,088
Camden	48	87	79	20	74	154	69	114	645
Islington	44	86	70	26	81	178	57	84	626
Hackney	56	116	65	22	95	205	79	106	744
Tower Hamlets	32	122	47	24	88	164	94	86	657
Greenwich	42	110	43	20	60	119	78	75	547
Lewisham	64	83	58	16	81	226	90	105	723
Southwark	47	86	73	29	91	262	92	97	777
Lambeth	79	130	78	28	122	264	123	178	1,002
Wandsworth	70	83	34	22	84	268	57	62	680
Hammersmith and Fulham	38	57	30	27	71	181	72	73	549
Kensington and Chelsea	66	58	50	35	60	167	35	74	545
Total Inner	683	1,207	769	354	1,088	2,488	1,000	1,239	8,828
Waltham Forest	53	137	45	14	57	143	92	48	589
Redbridge	48	133	37	12	84	147	102	35	598
Havering	29	140	29	5	71	139	107	33	553
Barking and Dagenham	21	113	23	7	48	74	86	23	395
Newham	39	172	27	13	71	169	130	49	670
Bexley	40	54	28	9	25	112	71	23	362
Bromley	59	70	43	7	52	193	71	86	581
Croydon	70	112	56	6	67	207	92	94	704
Sutton	35	57	19	7	26	104	48	38	334
Merton	43	44	21	15	38	130	44	31	366
Kingston	30	52	19	6	39	121	49	39	355
Richmond	38	42	14	11	23	120	55	47	350
Hounslow	34	131	23	13	71	215	98	54	639
Hillingdon	39	144	38	7	61	170	107	44	610
Ealing	69	126	32	17	92	248	112	52	748
Brent	59	119	77	16	45	155	78	64	613
Harrow	46	72	37	7	22	83	42	20	329
Barnet	104	208	74	25	80	196	180	66	933
Haringey	45	122	54	18	57	161	67	76	600
Enfield	55	179	63	12	55	159	110	40	673
Total Outer	956	2,227	759	227	1,084	3,046	1,741	962	11,002
Greater London	1,639	3,434	1,528	581	2,172	5,534	2,741	2,201	19,830

Table 4.5 (cont.) Vehicles involved in collisions in the Greater London area in 2009 by manoeuvre and borough

Borough	Change lane to left	Change lane to right	Going ahead left bend	Going ahead right bend	Going ahead other	Reversing	Grand total
City of London	6	5	6	11	223	7	503
Westminster	41	24	16	24	1,056	49	2,298
Camden	11	10	8	5	607	23	1,309
Islington	9	4	22	3	575	12	1,251
Hackney	12	13	8	15	585	29	1,406
Tower Hamlets	22	14	8	5	603	24	1,333
Greenwich	25	14	14	22	594	22	1,238
Lewisham	13	10	16	19	666	17	1,464
Southwark	22	10	14	26	802	30	1,681
Lambeth	24	17	27	26	894	25	2,015
Wandsworth	23	13	23	27	687	20	1,473
Hammersmith and Fulham	16	17	24	22	482	9	1,119
Kensington and Chelsea	10	17	18	23	544	16	1,173
Total Inner	234	168	204	228	8,318	283	18,263
Waltham Forest	13	9	10	8	416	15	1,060
Redbridge	16	22	12	12	461	19	1,140
Havering	12	15	15	16	450	13	1,074
Barking and Dagenham	6	17	11	12	317	10	768
Newham	19	17	12	11	606	21	1,356
Bexley	11	10	17	20	447	12	879
Bromley	3	3	26	29	563	19	1,224
Croydon	20	6	28	26	759	26	1,569
Sutton	3	2	5	11	345	13	713
Merton	8	5	20	18	289	7	713
Kingston	5	11	31	20	279	3	704
Richmond	12	7	14	16	310	6	715
Hounslow	20	25	24	33	591	14	1,346
Hillingdon	12	21	34	22	651	19	1,369
Ealing	30	33	33	32	801	22	1,699
Brent	5	7	10	22	560	22	1,239
Harrow	4	1	12	20	326	12	704
Barnet	22	22	43	45	936	27	2,028
Haringey	4	13	14	21	627	27	1,306
Enfield	11	17	20	17	600	40	1,378
Total Outer	236	263	391	411	10,334	347	22,984
Greater London	470	431	595	639	18,652	630	41,247

Table 4.6 Vehicles involved in collisions in the Greater London area in 2009 tabulated by manoeuvre and vehicle type

Note: This table is continued on the next page

Type of vehicle	Parked	Stopping	Starting	Turning round	Turning left or right or waiting to turn	Turning right or waiting to turn	Going ahead but held up	Going ahead overtaking	Sub-total
Pedal cycle	10	56	59	1	111	218	61	410	926
Motor cycle up to 50cc	1	25	11	2	14	26	13	85	177
Motor cycle 50 to 125cc	4	103	30	2	48	88	51	380	706
Motor cycle 125 to 500cc	0	26	10	3	17	27	12	86	181
Motor cycle over 500cc	6	89	37	1	44	56	48	332	613
Car	1,311	2,313	875	429	1,521	4,428	2,156	710	13,743
Taxi	50	81	61	71	50	145	96	33	587
Bus or coach	92	445	282	1	81	94	132	44	1,171
Goods up to 3.5 tonnes MGW	118	228	99	61	204	369	133	84	1,296
Goods 3.5 to 7.5 tonnes MGW	11	16	13	5	16	20	7	6	94
Goods over 7.5 tonnes MGW	19	31	32	3	43	28	16	14	186
Other motor vehicle	17	20	16	0	23	34	16	8	134
Other non-motor vehicle	0	1	3	2	0	1	0	9	16
Total	1,639	3,434	1,528	581	2,172	5,534	2,741	2,201	19,830

Table 4.6 (cont.) Vehicles involved in collisions in the Greater London area in 2009 tabulated by manoeuvre and vehicle type

Type of vehicle	Change lane		Change lane to right	Going ahead		Going ahead right bend	Going ahead other		Reversing	Grand total
	to left	to right		left bend	right bend		other			
Pedal cycle	16	36	43	74	2,707	2	3,804			
Motor cycle up to 50cc	1	4	6	9	282	0	479			
Motor cycle 50 to 125cc	13	10	29	35	1,277	1	2,071			
Motor cycle 125 to 500cc	1	2	3	13	323	1	524			
Motor cycle over 500cc	12	12	28	40	1,155	2	1,862			
Car	304	269	406	387	10,470	462	26,041			
Taxi	16	7	7	9	385	19	1,030			
Bus or coach	11	17	24	25	826	3	2,077			
Goods up to 3.5 tonnes MGW	53	37	33	30	839	106	2,394			
Goods 3.5 to 7.5 tonnes MGW	12	9	6	1	84	10	216			
Goods over 7.5 tonnes MGW	30	27	6	13	149	11	422			
Other motor vehicle	1	1	4	3	149	0	292			
Other non-motor vehicle	0	0	0	0	6	13	35			
Total	470	431	595	639	18,652	630	41,247			

Figure 4.7: Age profile of motor vehicle drivers involved in collisions in Greater London 2009

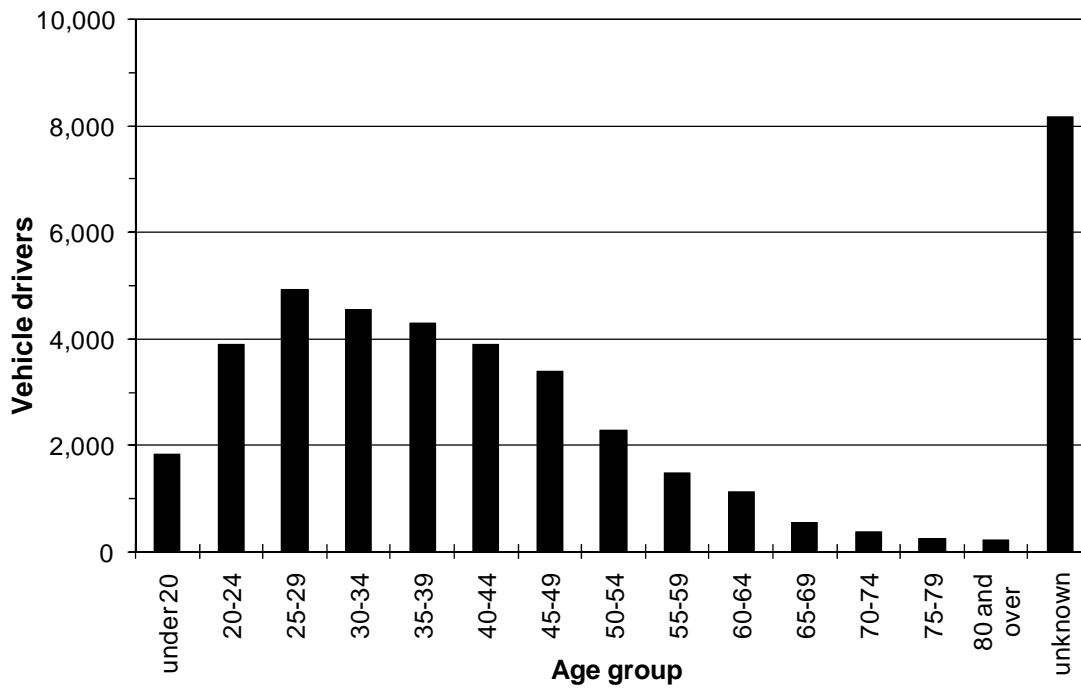
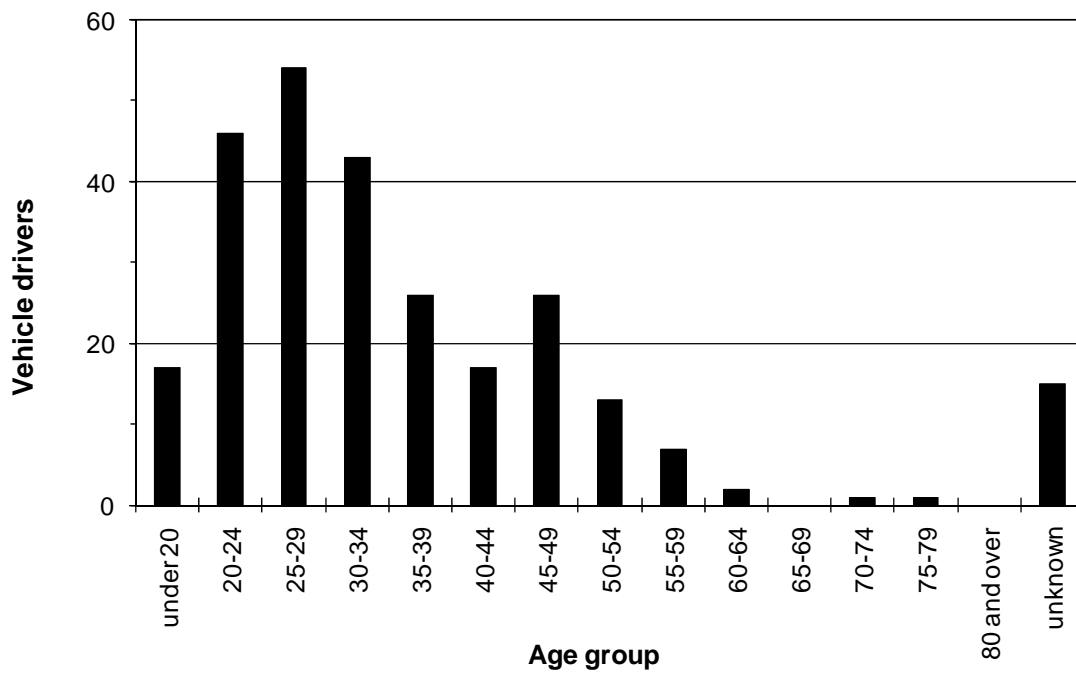


Figure 4.8: Positive breath tests for drivers involved in collisions in Greater London 2009



5

Costs

5.1 DfT collision costs

Table 5.1 shows the latest available road collision costs by severity and road type for all hours of the day, as published by the Department for Transport in the *Accidents Sub-objective TAG Unit 3.4.1* on the *Transport Analysis Guidance (TAG)* web site (www.dft.gov.uk/webtag) in January 2010.

When assessing the potential savings from engineering remedial measures or other road safety schemes, it is normal practice to use the average collision cost, which includes an allowance for *damage only collisions*, (which are not recorded as part of the *Stats 19* national reporting system).

Table 5.1 Collision costs (£'s at June 2008 prices)

Type of collision	Urban roads	Rural roads	Motorways	All roads
Fatal collision	1,806,191	1,973,602	2,064,494	1,906,154
Serious collision	209,844	234,473	243,542	218,114
Slight collision	21,465	25,188	29,928	22,633
All injury collisions	59,718	121,041	89,080	74,974
Damage only collisions	1,880	2,779	2,673	2,003
All collision cost per injury collision (including an allowance for damage only collisions)	92,986	142,716	109,363	105,044

Source: Department for Transport figures from the *Accidents Sub-objective TAG Unit 3.4.1* on the *Transport Analysis Guidance* web site (www.dft.gov.uk/webtag) January 2010

5.2 The cost to London

If the average collision cost for urban roads from Table 5.1 (£92,986) is applied to the 23,239 reported personal injury collisions in the Greater London area during 2009, then the total cost to the community of all road collisions in Greater London is estimated to be almost £2.2 billion at June 2008 prices.

Prior to 1988, the Department of Transport used a modified *human capital* approach. This placed a value on the contribution which the collision victim would have made to the economy in terms of output, together with medical costs and a notional allowance for pain, grief and suffering. This method was replaced (in 1988 for fatal collisions and in 1993 for serious and slight collisions) by a *willingness to pay* approach, intended to encompass all aspects of the cost of a casualty; namely lost output, medical costs and a variety of *human costs* based on *willingness to pay* values such as pain, grief and suffering to the casualty. The revised method gives significantly increased cost figures and hence the costs quoted in this report will not be comparable with annual reports for years prior to 1993. In addition, it should be noted that since 1994 the casualty values incorporate improvements in information on medical costs as a result of updated hospital research findings.

6

Appendices

Important notes about collision data

6.1 Comparing collision data from year to year

It is important to be aware of the following points when comparing collision data from year to year:

(a) The increase in serious casualties in 2006, particularly for car occupants, was larger than expected. In conjunction with the Metropolitan Police Service (MPS), TfL investigated possible discrepancies in the 2004/05 casualty data, concentrating on the period between November 2004 and April 2005, when serious injuries were noticeably lower compared to subsequent months. Since then figures have returned to a more consistent trend. During this period there were several organisational changes within the MPS with regards to the collision and casualty data processing. Detailed investigations by MPS have not identified direct links between these changes and the apparent decrease in serious injuries during this period.

Consequently, some of the increase in serious injuries in 2006 was probably as a result of comparing the 2006 data with the low data in 2005.

(b) The numbers of collisions and casualties were changed for the years 1991 to 1997 as some previously missing collisions were reported by the City Police. This mainly affects the City of London and adjacent boroughs, as well as figures for inner London. As a result data contained in this annual report is not directly comparable with data in *annual reports* or *Factsheets* prior to 1998.

(c) It should be noted that all the data in this report relates to the post-April 1995 Greater London borough boundaries. Because of this it is not possible to compare current Greater London collision and casualty totals or individual borough figures with those in annual reports prior to 1995.

(d) During 1984, the Metropolitan Police improved their procedures for allocating the level of severity associated with reported collisions and recording fatalities. Changes in coding the level of severity were applied to collisions occurring after September 1984, though action on fatalities was backdated to cover all collisions for the whole of 1984. Consequently, care must be taken when comparing collisions on a year to year basis, particularly serious collisions, casualties and fatalities post 1984 with those occurring before 1984.

(e) Data for the City of London recorded by the City of London Police was added to the TfL database for collisions occurring in 1986 and onwards. Therefore, care must be taken when comparing collision and casualty totals for the whole of London or inner London, before and after 1986. Note that all of the tables and figures within this report, including the ten year trend graphs (Figures 1.1 to 1.7) and longer period trend graphs (Figures 1.8 to 1.10), include data for the City of London.

(f) Due to changes in Metropolitan Police administrative procedures, collision data for Heathrow Airport are not held for 1982 onwards. Care should be taken when comparing long term data on a year to year basis, particularly in the London Borough of Hillingdon, to which these collisions had previously been allocated.

(g) It should also be noted that the Department for Transport in their annual report Road casualties Great Britain include collision data for Heathrow Airport within both the London Borough of Hillingdon total and the Greater London total, up to and including the 2007 report. From the 2008 report, Heathrow is included in the Greater London total but shown as a separate authority.

6.1.2 Reporting levels of collisions and casualties

This report deals only with those collisions notified by the police under the Stats 19 national reporting system. It is well known from a number of hospital-based studies that there is a degree of under-reporting of casualties nationally. It is likely that data for London will be similarly affected. In the case of fatalities the figures contained in this report are almost certainly accurate, but for both serious and slight casualties there is probably a degree of under-reporting. However, because the methods of collection of collision data by the police remain consistent over time, it is reasonable to assume that there is consistency between figures for reported collisions over a period of years.

To try to quantify the amount of under-reporting of collisions in London, TfL commissioned a study *Reporting of Road Traffic Accidents in London: Matching Police Stats 19 records with Hospital Accident and Emergency Department Data* by Transport Research Laboratory Ltd (TRL), which was completed in November 2002. This matched hospital collision and emergency department records of people injured on the roads around three representative hospitals, one each in outer, inner and central London, with police Stats 19 records of reported personal injury collisions. The report provided a best estimate of the reporting rate of 70%. The report is summarised in TfL's Safety Research Report No 1, published in September 2003.

If the best estimate of the reporting rate (70%) is applied to the 27,979 casualties reported to the police during 2008 it can be estimated that there may have been about 40,000 people injured on the roads in London in 2008.

6.1.3 Definitions of casualty severity

The following definitions are taken from *Stats 20: Instructions for the completion of Road Accident Reports – DfT October 2004*:

- **Fatal injury:** ‘fatal’ injury includes only those cases where death occurs in less than 30 days as a result of the accident. ‘Fatal’ does not include death from natural causes or suicide.

- **Serious injury:** examples of ‘serious’ injury are:
 - fracture
 - internal injury
 - severe cuts
 - crushing
 - burns (excluding friction burns)
 - concussion
 - severe general shock requiring hospital treatment
 - detention in hospital as an in-patient, either immediately or later
 - injuries to casualties who die 30 or more days after the accident from injuries sustained in that accident

- **Slight injury:** examples of ‘slight’ injury are:
 - sprains, not necessarily requiring medical treatment
 - neck whiplash injury
 - bruises
 - slight cuts
 - slight shock requiring roadside attention
 - (persons who are merely shaken and who have no other injury should not be included unless they receive or appear to need medical treatment)

Note: an injured casualty is coded by the police as seriously or slightly injured on the basis of information available within a short time of the collision. This generally will not include the results of a medical examination, but may include the fact of being detained in hospital, the reasons for which may vary somewhat from area to area.

6.1.4 Change at Transport for London

In December 2008 a new Directorate in Surface Transport was created to bring together a number of teams from across TfL, in order to achieve more integrated and cost-effective delivery of a number of programmes central to the Mayor's vision for London's transport system. The Department is called Better Routes and Places and it encompasses the work of teams brought together: The London Road Safety Unit; The Cycling, Walking and Accessibility team; Bus Priority; The Freight Unit; The Transport for London Road Network (TLRN) Planning Unit; The Smarter Travel Unit; and The Borough Programmes and Borough Funding teams.

The processing and analysis of collision and casualty data continues in the Modal Policy department, led by the Research and Data Analysis team.

Requests for collisions and casualty information can be made:

- by telephone: 020 3054 1079 or 1048
- by e-mail :
sandra.cowland@tfl.gov.uk or michael.pilch@tfl.gov.uk
- or in writing :
Modal Policy
Transport for London
Palestra
197 Blackfriars Road
London SE1 8NJ