

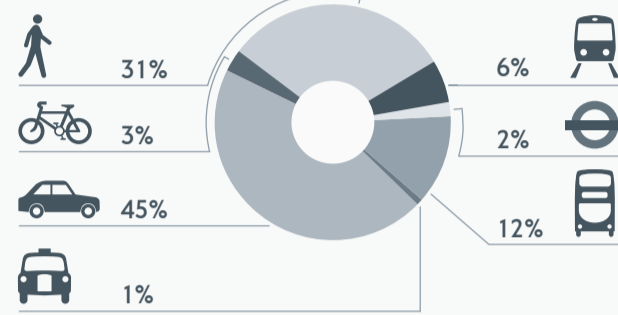
Who lives and works in the South London sub-region?

The south London sub-region, represented via the South London Partnership, consists of the London Boroughs of Bromley, Croydon, Kingston-upon-Thames, Merton, Richmond-upon-Thames, Sutton and Wandsworth.



How people travel in the south London sub-region?

Modal share (average day (seven-day week), LTDS 2011/12)



Challenges and priority work areas

Challenges in every sub-region

- Improve air quality to meet and exceed legal requirements and ensure health benefits for Londoners
- Transform the role of cycling and walking in the sub-region
- Meet CO₂ targets

South London-specific challenges

- Reduce public transport crowding
- Improve access to, from and within key places
- Improve connectivity (along identified corridors)
- Reduce Highway congestion

What are the priority work areas?

- Cycling: development of cycling vision for south London
- Tramlink: development of options for proposed extensions and exploring funding opportunities
- Rail: exploration of opportunities to improve rail services including devolution
- Freight: supporting improved freight efficiency through measures such as consolidation
- Investing in area, corridor and junction studies to address challenges on the road network

Opportunity Areas

- Vauxhall, Nine Elms and Battersea Opportunity Area
- Croydon Opportunity Area
- South Wimbledon and Colliers Wood Area for Intensification

Intensification Areas

- South Wimbledon and Colliers Wood Area for Intensification

Further information

The south Sub-Regional Transport Plan 2012/ 13 update provides more detail on the implementation plan for sub-regional projects planned and committed until 2020.

Contacts

Ambassador:
Alex Williams (alexwilliams@tfl.gov.uk)

Sub-regional partnership:
Ian Smith (director@southlondonpartnership.co.uk)

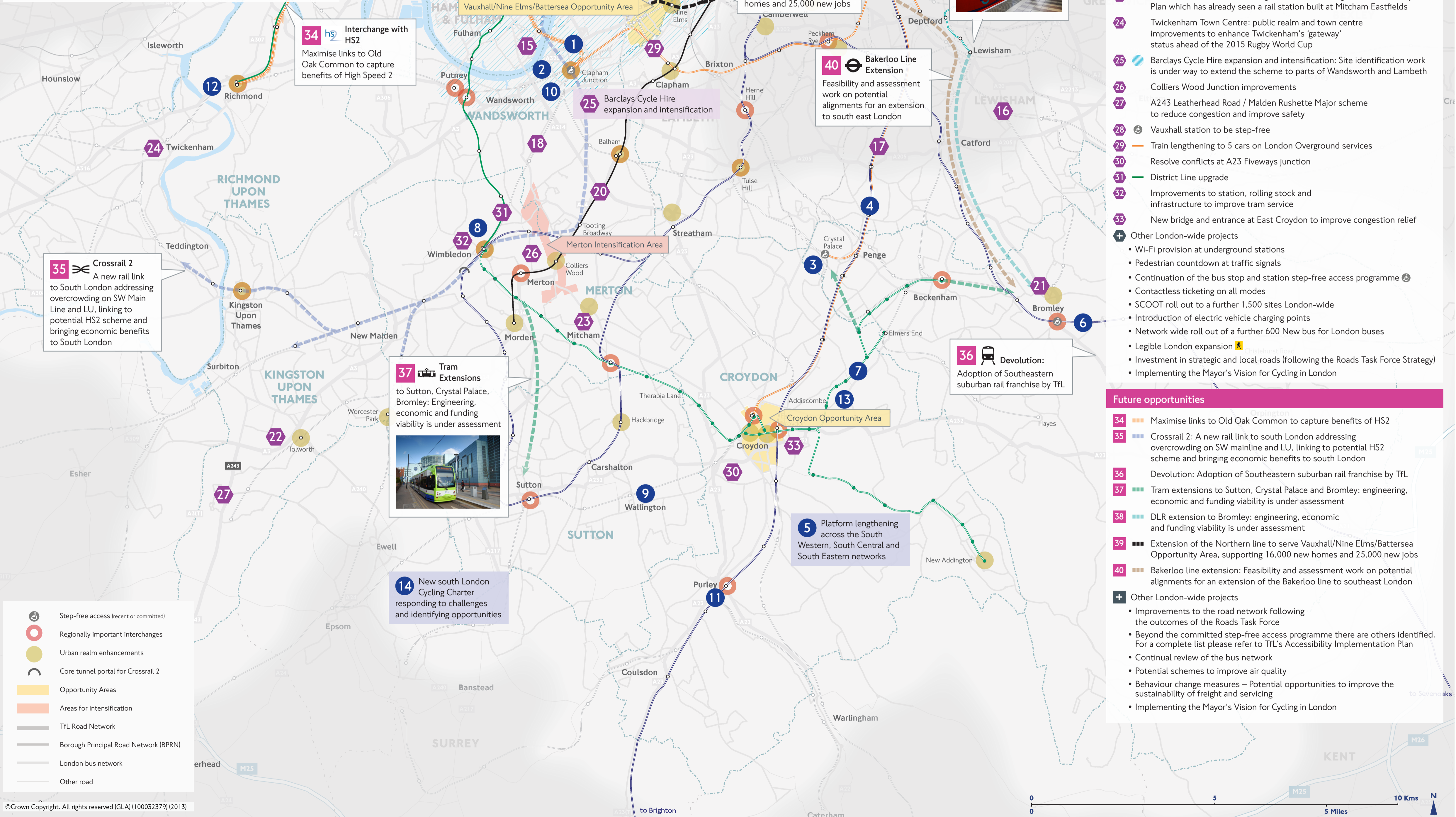
TfL Strategic:
Matthew Yates (matthewyates@tfl.gov.uk)

TfL LIP Coordinator:
Peter McBride (petermcbride@tfl.gov.uk)

TfL Engagement:
Stuart Foster (stuart.foster@tfl.gov.uk)

What was delivered in 2012/13?

- London Overground: Extension to Clapham Junction completed
- Refurbished and remodelled Grant Road ticket hall including step-free access
- Refurbishment of Crystal Palace station, with step-free access complete
- National Rail: Introduction of 10-car trains on the Sydenham corridor
- Platform lengthening at various stations across the South Western, South Central and South Eastern networks to facilitate longer trains
- Step-free access at Bromley South
- New trams to enhance frequencies between Elmers End and Therapia Lane
- Wimbledon: town centre and station forecourt improvements as part of Mayor's London's Great Outdoors programme
- Wallington: town centre improvements delivered under Sutton's Integrated Transport Package
- Clapham Junction including Brighton Yard: revisions to traffic arrangements to reduce traffic dominance and significant uplift in public realm including a new entrance to the station via Brighton Yard
- Purley: town centre improvements to help regeneration and major changes to lane markings
- Richmond: town centre improvement, rationalisation of traffic arrangements and significant uplift in public realm with a new 'gateway' created at the station forecourt
- Addiscombe: measures to rationalise kerb alignments, improve safety, reduce and remove street clutter and improve the quality of the public realm
- New south London Cycling Charter responding to challenges and identifying opportunities
- Other London-wide projects
 - Wi-Fi provision at underground stations
 - Pedestrian countdown roll out
 - Continuation of the bus stop and station step-free access programme
 - Legible London expansion



What is committed?

- West London Line: Train and platform lengthening to eight cars on between Croydon and Watford/Milton Keynes
- South Eastern: Additional trains creating 13% extra capacity
- South Central: Brighton main line Peak only: 14% more capacity through train lengthening
- South Western: mainline: around 10% additional capacity by lengthening more peak services
- Thameslink: Completion of Thameslink Programme by December 2018
- Upgrade of Northern line to deliver increased frequency
- Bromley North Village: public realm improvements and town centre regeneration
- Tolworth Broadway: removal of extensive guard-railing along the current median strip and converting this to shared pedestrian & cycle use, introducing safer and easier crossings to better connect either side of the shopping parade and introducing a new, shared-use crossing over Tolworth Broadway
- Mitcham Town Centre: building on LB Merton's Regeneration Delivery Plan which has already seen a rail station built at Mitcham Eastfields
- Twickenham Town Centre: public realm and town centre improvements to enhance Twickenham's 'gateway' status ahead of the 2015 Rugby World Cup
- Barclays Cycle Hire expansion and intensification: Site identification work is under way to extend the scheme to parts of Wandsworth and Lambeth
- Colliers Wood Junction improvements
- A243 Leatherhead Road / Malden Russette Major scheme to reduce congestion and improve safety
- Vauxhall station to be step-free
- Train lengthening to 5 cars on London Overground services
- Resolve conflicts at A23 Fiveways junction
- District Line upgrade
- Improvements to station, rolling stock and infrastructure to improve tram service
- New bridge and entrance at East Croydon to improve congestion relief
- Other London-wide projects
 - Wi-Fi provision at underground stations
 - Pedestrian countdown at traffic signals
 - Continuation of the bus stop and station step-free access programme
 - Contactless ticketing on all modes
 - SCOOT roll out to a further 1,500 sites London-wide
 - Introduction of electric vehicle charging points
 - Network wide roll out of a further 600 New bus for London buses
 - Legible London expansion
 - Investment in strategic and local roads (following the Roads Task Force Strategy)
 - Implementing the Mayor's Vision for Cycling in London

Future opportunities

- Maximise links to Old Oak Common to capture benefits of HS2
- Crossrail 2: A new rail link to south London addressing overcrowding on SW mainline and LU, linking to potential HS2 scheme and bringing economic benefits to south London
- Devolution: Adoption of Southeastern suburban rail franchise by TfL
- Tram extensions to Sutton, Crystal Palace and Bromley: engineering, economic and funding viability is under assessment
- DLR extension to Bromley: engineering, economic and funding viability is under assessment
- Extension of the Northern line to serve Vauxhall/Nine Elms/Battersea Opportunity Area, supporting 16,000 new homes and 25,000 new jobs
- Bakerloo line extension: Feasibility and assessment work on potential alignments for an extension of the Bakerloo line to southeast London
- Other London-wide projects
 - Improvements to the road network following the outcomes of the Roads Task Force
 - Beyond the committed step-free access programme there are others identified. For a complete list please refer to TfL's Accessibility Implementation Plan
 - Continual review of the bus network
 - Potential schemes to improve air quality
 - Behaviour change measures – Potential opportunities to improve the sustainability of freight and servicing
 - Implementing the Mayor's Vision for Cycling in London