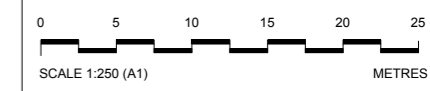


Canopy / Rooftight
Forecourt / Access
Tickethall / Entrance
Paid Concourse
Internal Accommodation
Ducts / Risers
Lift
Emergency Lift (plant replacement)
Escape Route

1. SAINBURYS BASEMENT CAR PARK ENTRANCE



This drawing is illustrative only. Detailed design will be subject to further approvals.

Rev	By	Chkd	Apprvd	Date	Description
05	SM	FM	SL	13/04/13	General Update
04	SM	FM	SL	25/03/13	Formal Issue
03	SM	FM	SL	20/03/13	General Update
02	SM	FM	SL	11/03/13	General Update
01	SM	FM	SL	04/03/13	First Drawn

Client

Transport for London



Halcrow Group Ltd.
A CH2M HILL COMPANY
Elms House, 43 Brook Green
Hammersmith, London W6 7EP
TEL: 020 3479 8000
FAX: 020 3479 8001
www.halcrow.com



Project: **NORTHERN LINE EXTENSION TO BATTERSEA PLANNING DIRECTION DRAWINGS**

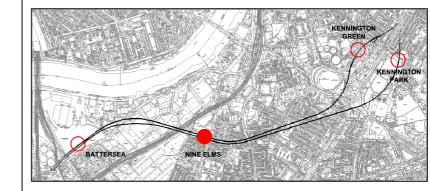
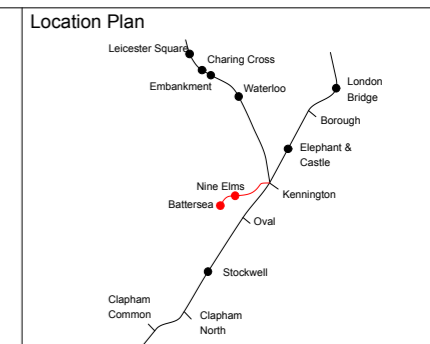
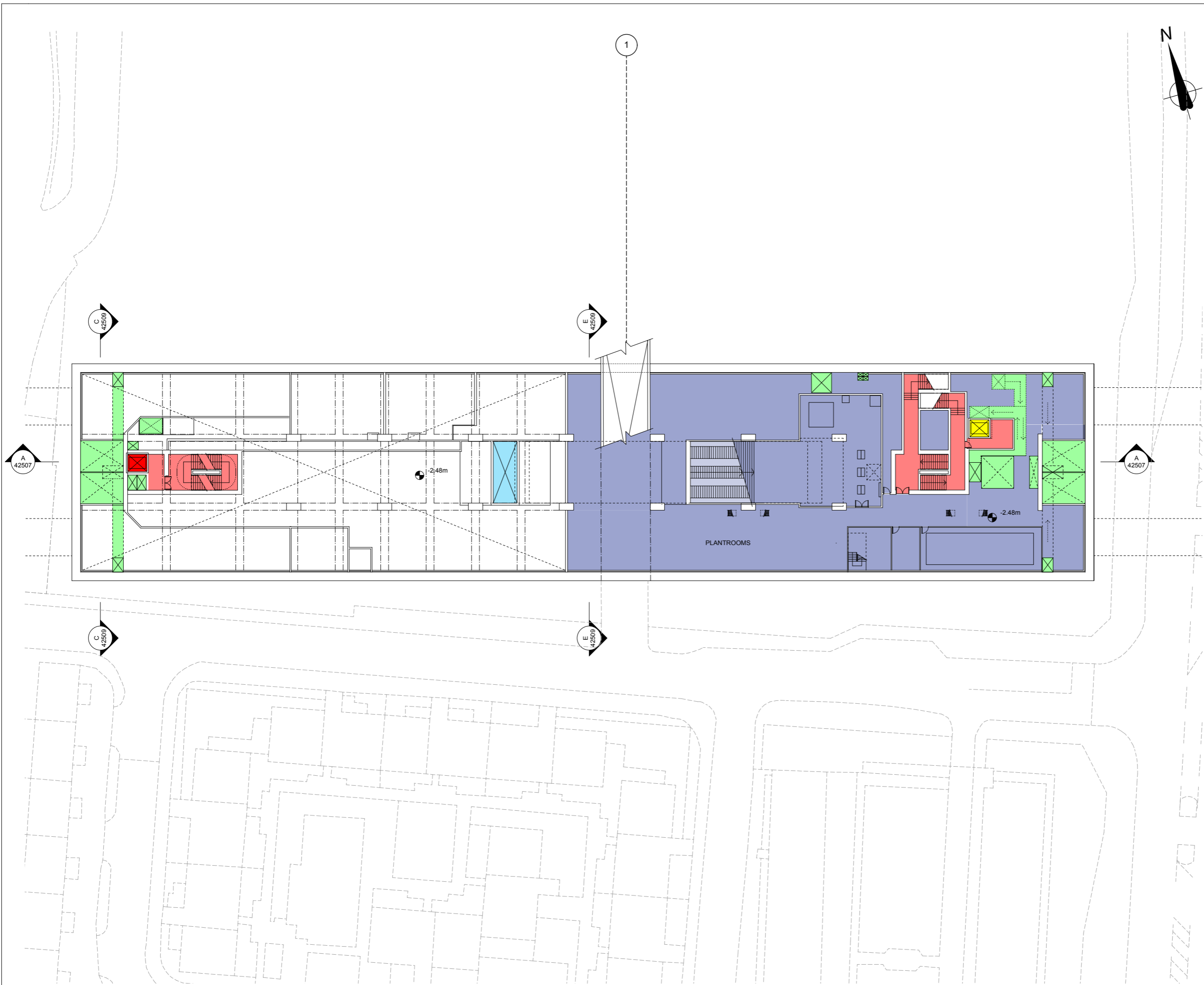
Drawing: **NINE ELMS STATION STREET LEVEL**

Suitability: **S4 FORMAL ISSUE TO CLIENT**

Drawn by:	SM	Date:	04/03/13
Checked by:	FM	Date:	04/03/13
Approved by:	SL	Date:	04/03/13
Drawing Scale:	1:250 @ A1 or 1:500 @ A3		

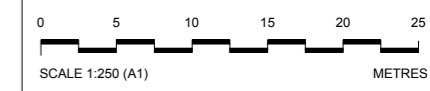
Drawing No:	GRNLEB-SDA-ST-XX-DR-ARC-42501	Revision:	05
-------------	-------------------------------	-----------	----

PLANNING DIRECTION DRAWING NUMBER 28



	Canopy / Rooflight
	Forecourt / Access
	Tickethall / Entrance
	Paid Concourse
	Internal Accommodation
	Ducts / Risers
	Lift
	Emergency Lift (plant replacement)
	Escape Route

1. SAINBURYS BASEMENT CAR PARK RAMP



Internal layouts are illustrative only.

Rev	By	Chkd	Apprvd	Date	Description
07	SM	FM	SL	13/04/13	General Update
06	SM	FM	SL	10/04/13	General Update
05	SM	FM	SL	10/04/13	General Update
04	SM	FM	SL	25/03/13	Formal Issue
03	SM	FM	SL	20/03/13	General Update
02	SM	FM	SL	11/03/13	General Update
01	SM	FM	SL	04/03/13	First Drawn

Client
Transport for London

studiodareARCHITECTS
Buro Happold
Consulting Engineers

Halcrow Group Ltd.
A CH2M HILL COMPANY
Elms House, 43 Brook Green
HammerSmith, London W6 7EP
TEL: 020 3479 8000
FAX: 020 3479 8001
www.halcrow.com

Project:
**NORTHERN LINE EXTENSION
TO BATTERSEA
PLANNING DIRECTION DRAWINGS**

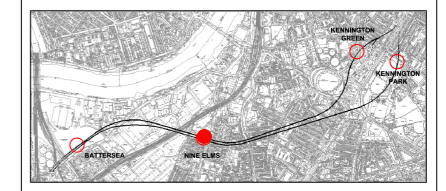
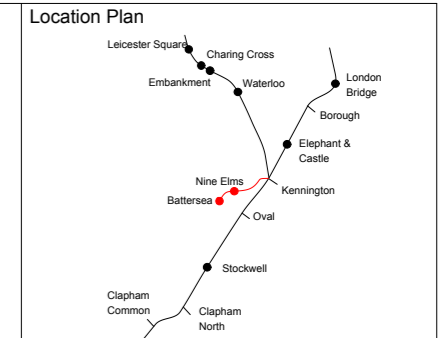
Drawing:
**NINE ELMS STATION
BASEMENT 01 LEVEL**

Suitability:
S4 FORMAL ISSUE TO CLIENT

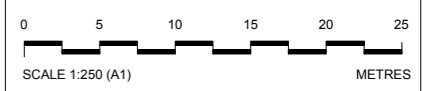
Drawn by: SM Date: 10/04/13
Checked by: FM Date: 10/04/13
Approved by: SL Date: 10/04/13
Drawing Scale: 1:250 @ A1 or 1:500 @ A3

Drawing No.: GRNLEB-SDA-ST-XX-DR-ARC-42502
Revision: 07

PLANNING DIRECTION DRAWING NUMBER 29



Canopy / Rooflight
Forecourt / Access
Tickethall / Entrance
Paid Concourse
Internal Accommodation
Ducts / Risers
Lift
Emergency Lift (plant replacement)
Escape Route



Internal layouts are illustrative only.

Rev	By	Chkd	Apprvd	Date	Description
06	SM	FM	SL	13/04/13	General Update
05	SM	FM	SL	10/04/13	General Update
04	SM	FM	SL	25/03/13	Formal Issue
03	SM	FM	SL	20/03/13	General Update
02	SM	FM	SL	11/03/13	General Update
01	SM	FM	SL	04/03/13	First Drawn

Client

Transport for London



Halcrow Group Ltd.
A CH2M HILL COMPANY
Elms House, 43 Brook Green
Hammersmith, London W6 7EF
TEL: 020 3479 8000
FAX: 020 3479 8001
www.halcrow.com



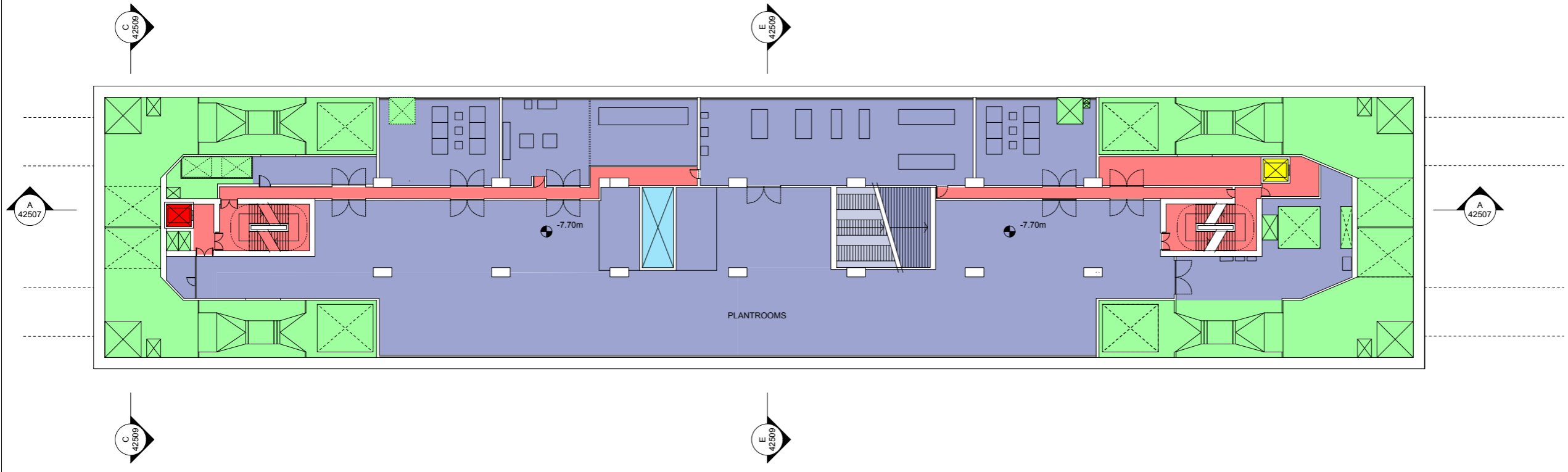
Project: **NORTHERN LINE EXTENSION TO BATTERSEA
PLANNING DIRECTION DRAWINGS**

Drawing: **NINE ELMS
BASEMENT 02 LEVEL**

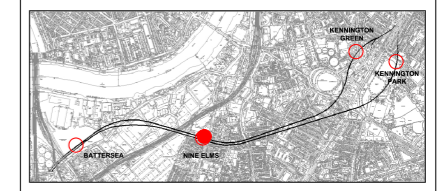
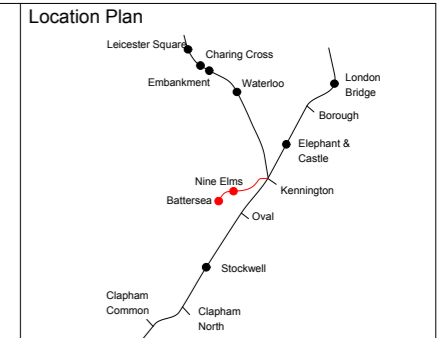
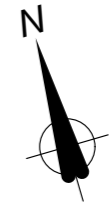
Suitability: **S4 FORMAL ISSUE TO CLIENT**

Drawn by: SM Date: 10/04/13
Checked by: FM Date: 10/04/13
Approved by: SL Date: 10/04/13
Drawing Scale: 1:250 @ A1 or 1:500 @ A3

Drawing No.: **GRNLEB-SDA-ST-XX-DR-ARC-42503** Revision: **06**



PLANNING DIRECTION DRAWING NUMBER 30



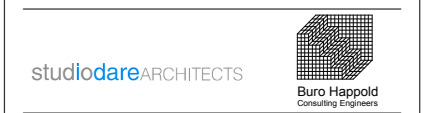
	Canopy / Rooflight
	Forecourt / Access
	Tickethall / Entrance
	Paid Concourse
	Internal Accommodation
	Ducts / Risers
	Lift
	Emergency Lift (plant replacement)
	Escape Route



Internal layouts are illustrative only.

Rev	By	Chkd	Apprvd	Date	Description
06	SM	FM	SL	13/04/13	General Update
05	SM	FM	SL	10/04/13	General Update
04	SM	FM	SL	25/03/13	Formal Issue
03	SM	FM	SL	20/03/13	General Update
02	SM	FM	SL	11/03/13	General Update
01	SM	FM	SL	04/03/13	First Drawn

Client
Transport for London



Halcrow Group Ltd.
A CH2M HILL COMPANY
Elms House, 43 Brook Green
Hammersmith, London W6 7EF
TEL: 020 3479 8000
FAX: 020 3479 8001
www.halcrow.com



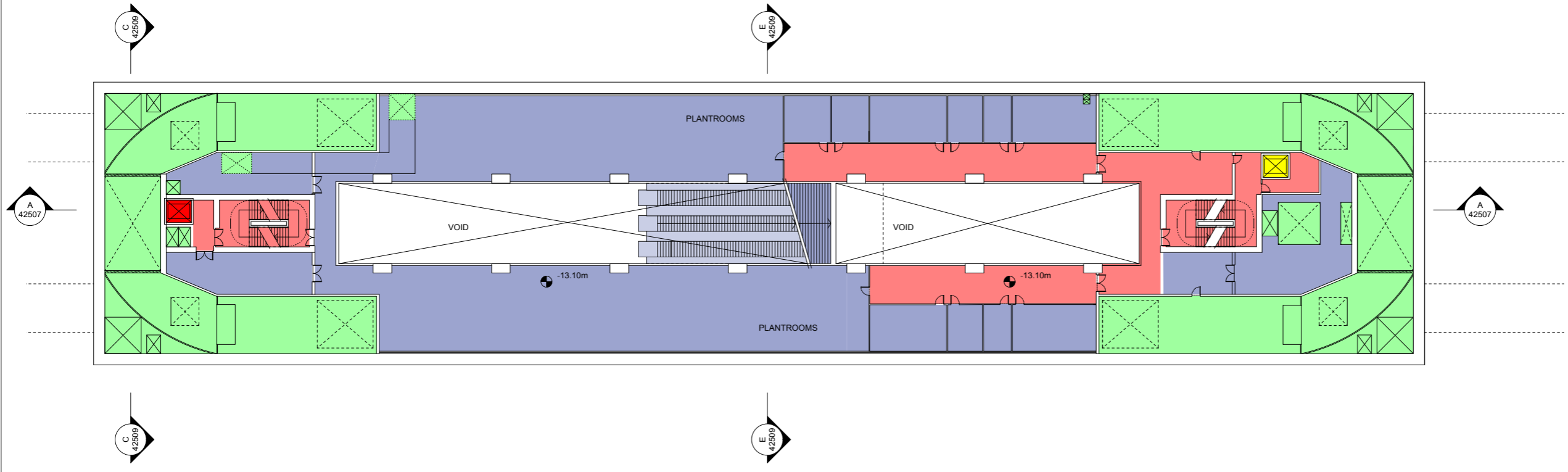
Project:
**NORTHERN LINE EXTENSION
TO BATTERSEA
PLANNING DIRECTION DRAWINGS**

Drawing:
**NINE ELMS STATION
BASEMENT 03 LEVEL**

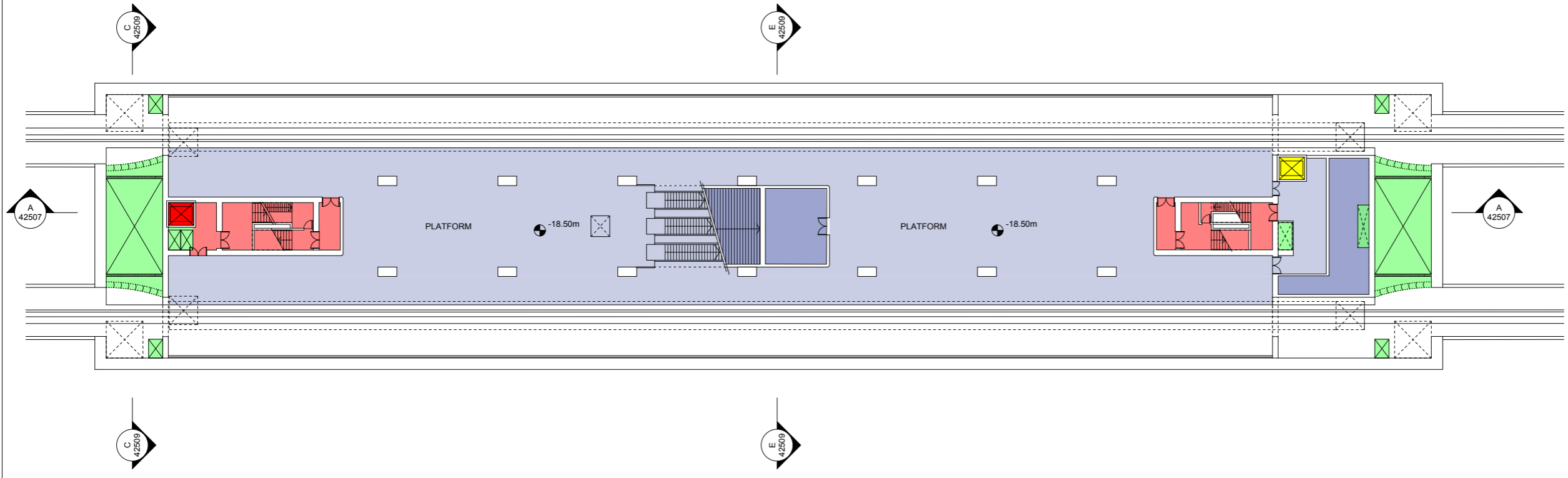
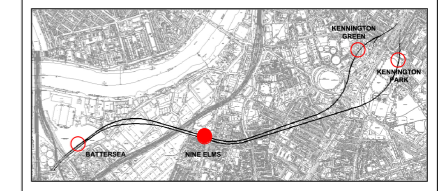
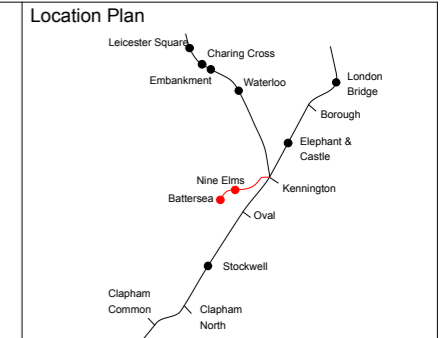
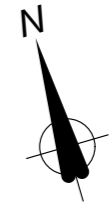
Suitability:
S4 FORMAL ISSUE TO CLIENT

Drawn by: SM Date: 10/04/13
Checked by: FM Date: 10/04/13
Approved by: SL Date: 10/04/13
Drawing Scale: 1:250 @ A1 or 1:500 @ A3

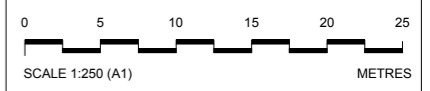
Drawing No.: GRNLEB-SDA-ST-XX-DR-ARC-42504 Revision: 06



PLANNING DIRECTION DRAWING NUMBER 31



Canopy / Rooflight
Forecourt / Access
Tickethall / Entrance
Paid Concourse
Internal Accommodation
Ducts / Risers
Lift
Emergency Lift (plant replacement)
Escape Route



Internal layouts are illustrative only.

Rev	By	Chkd	Apprvd	Date	Description
05	SM	FM	SL	10/04/13	General Update
04	SM	FM	SL	25/03/13	Formal Issue
03	SM	FM	SL	20/03/13	General Update
02	SM	FM	SL	11/03/13	General Update
01	SM	FM	SL	04/03/13	First Drawn

Client

Transport for London



Halcrow Group Ltd.
A CH2M HILL COMPANY
Elms House, 43 Brook Green
Hammersmith, London W6 7EP
TEL: 020 3479 8000
FAX: 020 3479 8001
www.halcrow.com



Project: **NORTHERN LINE EXTENSION TO BATTERSEA
PLANNING DIRECTION DRAWINGS**

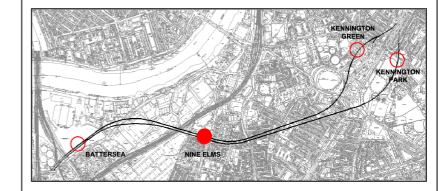
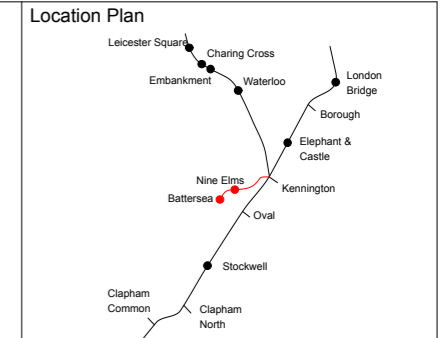
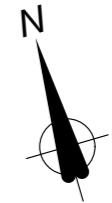
Drawing: **NINE ELMS STATION
PLATFORM 04 LEVEL**

Suitability: **S4 FORMAL ISSUE TO CLIENT**

Drawn by: SM Date: 10/04/13
Checked by: FM Date: 10/04/13
Approved by: SL Date: 10/04/13
Drawing Scale: 1:250 @ A1 or 1:500 @ A3

Drawing No: **GRNLEB-SDA-ST-XX-DR-ARC-42505** Revision: **05**

PLANNING DIRECTION DRAWING NUMBER 32



Canopy / Rooflight
Forecourt / Access
Tickethall / Entrance
Paid Concourse
Internal Accommodation
Ducts / Risers
Lift
Emergency Lift (plant replacement)
Escape Route



Internal layouts are illustrative only.

Rev	By	Chkd	Apprvd	Date	Description
05	SM	FM	SL	10/04/13	General Update
04	SM	FM	SL	25/03/13	Formal Issue
03	SM	FM	SL	20/03/13	General Update
02	SM	FM	SL	11/03/13	General Update
01	SM	FM	SL	04/03/13	First Drawn

Client

Transport for London



Halcrow Group Ltd.
A CH2M HILL COMPANY
Elms House, 43 Brook Green
HammerSmith, London W6 7EP
TEL: 020 3479 8000
FAX: 020 3479 8001
www.halcrow.com



Project: **NORTHERN LINE EXTENSION TO BATTERSEA
PLANNING DIRECTION DRAWINGS**

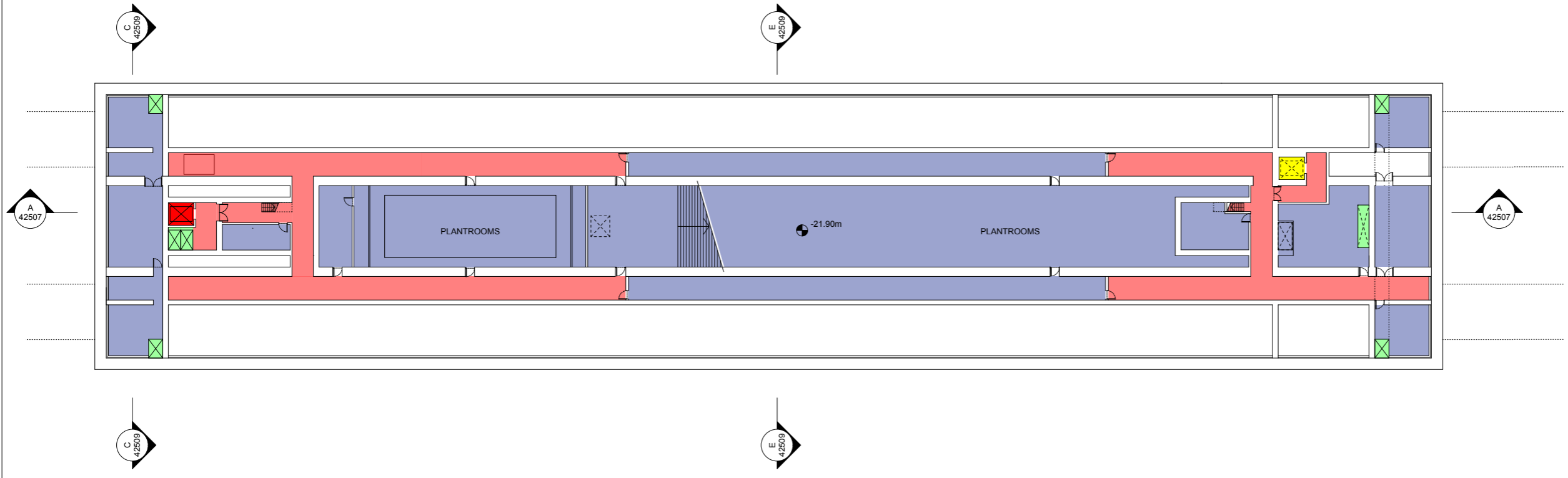
Drawing: **NINE ELMS STATION
BASEMENT 05 LEVEL**

Suitability: **S4 FORMAL ISSUE TO CLIENT**

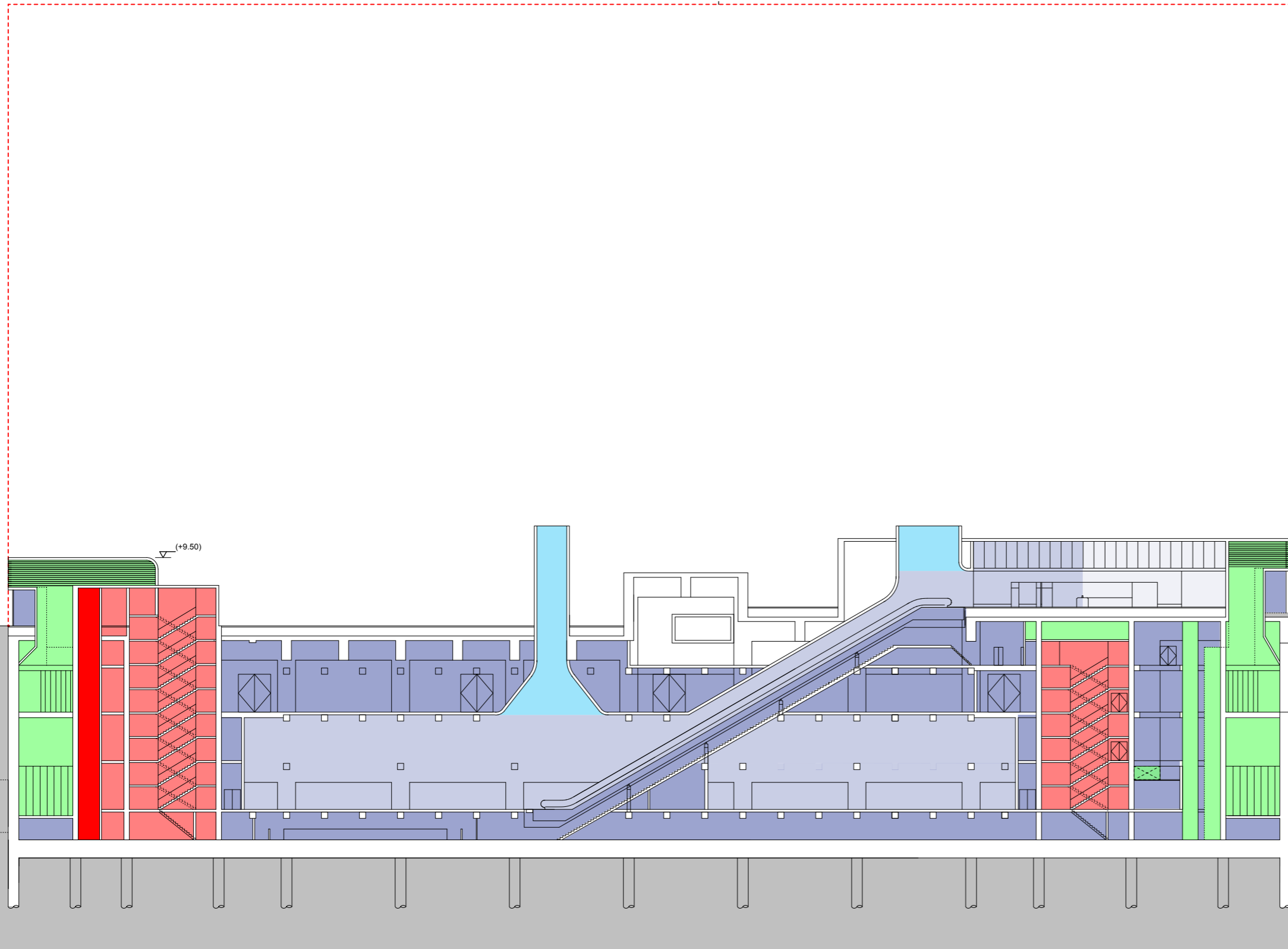
Drawn by: SM Date: 10/04/13
Checked by: FM Date: 10/04/13
Approved by: SL Date: 10/04/13
Drawing Scale: 1:250 @ A1 or 1:500 @ A3

Drawing No: **GRNLEB-SDA-ST-XX-DR-ARC-42506** Revision: **05**

PLANNING DIRECTION DRAWING NUMBER 33

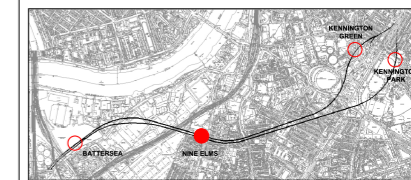
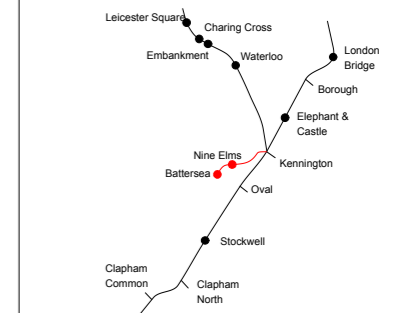


1



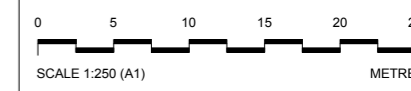
SECTION AA

Location Plan



Canopy / Rooflight
Forecourt / Access
Tickethall / Entrance
Paid Concourse
Internal Accommodation
Ducts / Risers
Lift
Emergency Lift (plant replacement)
Escape Route

1. OUTLINE OF POTENTIAL DEVELOPMENT INCLUDING VENTILATION SHAFTS



Internal layouts are illustrative only. Detailed design for above ground elements will be subject to further approvals

Rev	By	Chkd	Apprvd	Date	Description
06	SM	FM	SL	13/04/13	General Update
05	SM	FM	SL	10/04/13	General Update
04	SM	FM	SL	25/03/13	Formal Issue
03	SM	FM	SL	20/03/13	General Update
02	SM	FM	SL	11/03/13	General Update
01	SM	FM	SL	04/03/13	First Drawn

Client

Transport for London

studiodareARCHITECTS

Buro Happold
Consulting Engineers

Halcrow Group Ltd.
A CH2M HILL COMPANY
Elms House, 43 Brook Green
Hammermith, London W6 7EP
TEL: 020 3479 8000
FAX: 020 3479 8001
www.halcrow.com

Halcrow

Project: NORTHERN LINE EXTENSION TO BATTERSEA
PLANNING DIRECTION DRAWINGS

Drawing: NINE ELMS STATION
SECTION AA

Suitability: S4 FORMAL ISSUE TO CLIENT

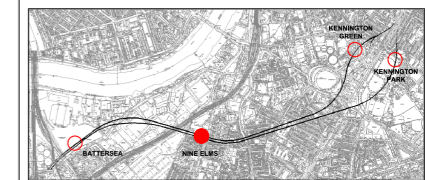
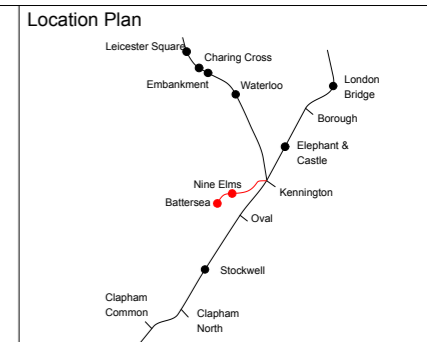
Drawn by: SM	Date: 10/04/13
Checked by: FM	Date: 10/04/13
Approved by: SL	Date: 10/04/13
Drawing Scale: 1:250 @ A1 or 1:500 @ A3	

Drawing No: GRNLEB-SDA-ST-XX-DR-ARC-42507
Revision: 06

PLANNING DIRECTION DRAWING NUMBER 34

1

1



Canopy / Rooflight
Forecourt / Access
Tickethall / Entrance
Paid Concourse
Internal Accommodation
Ducts / Risers
Lift
Emergency Lift (plant replacement)
Escape Route

1. OUTLINE OF POTENTIAL DEVELOPMENT INCLUDING VENTILATION SHAFTS



Internal layouts are illustrative only. Detailed design for above ground elements will be subject to further approvals

Rev	By	Chkd	Apprvd	Date	Description
06	SM	FM	SL	13/04/13	General Update
05	SM	FM	SL	10/04/13	General Update
04	SM	FM	SL	25/03/13	Formal Issue
03	SM	FM	SL	20/03/13	General Update
02	SM	FM	SL	11/03/13	General Update
01	SM	FM	SL	04/03/13	First Drawn

Client

Transport for London



Halcrow Group Ltd.
A CH2M HILL COMPANY
Elms House, 43 Brook Green
HammerSmith, London W6 7EF
TEL: 020 3479 8000
FAX: 020 3479 8001
www.halcrow.com



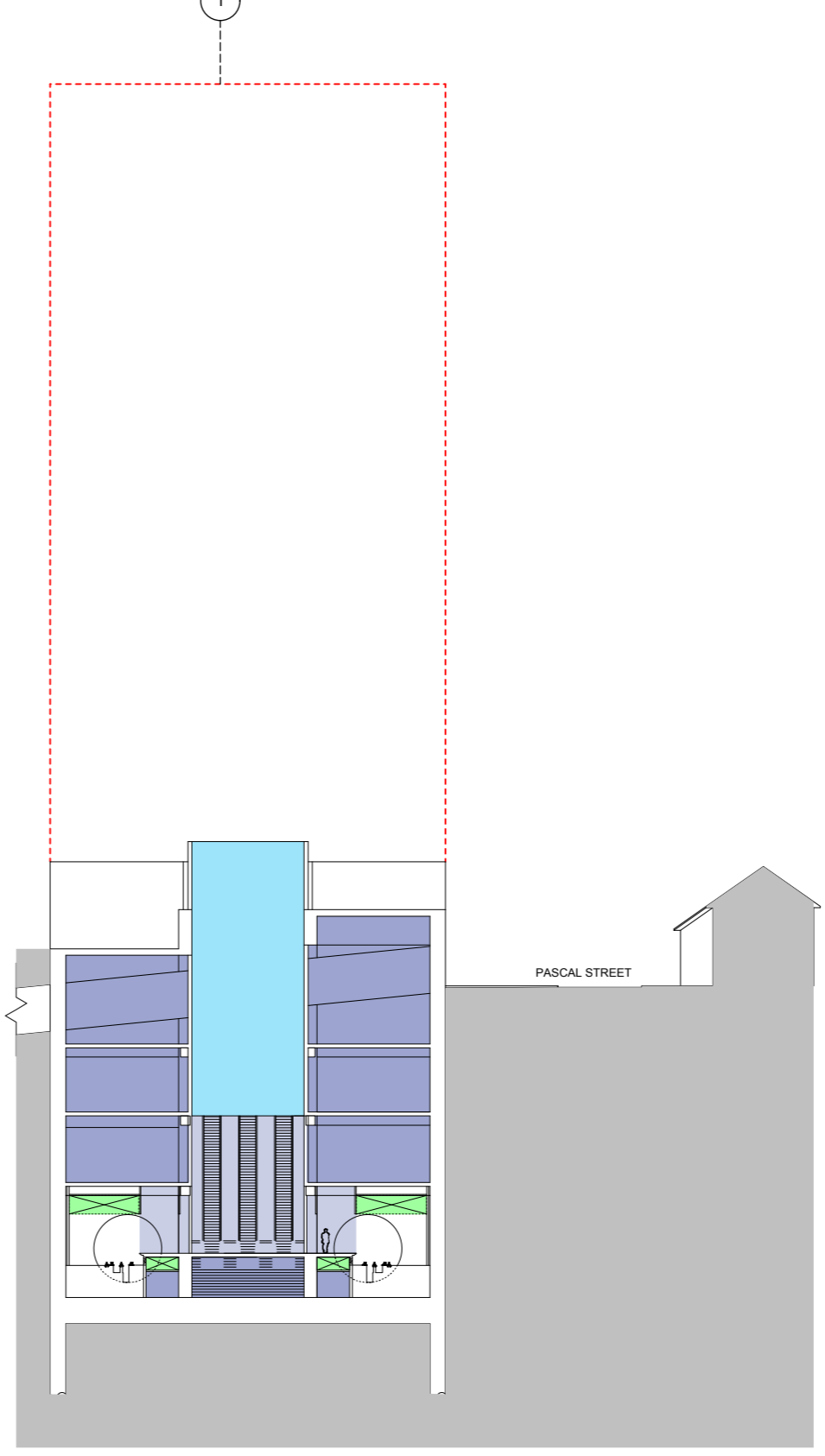
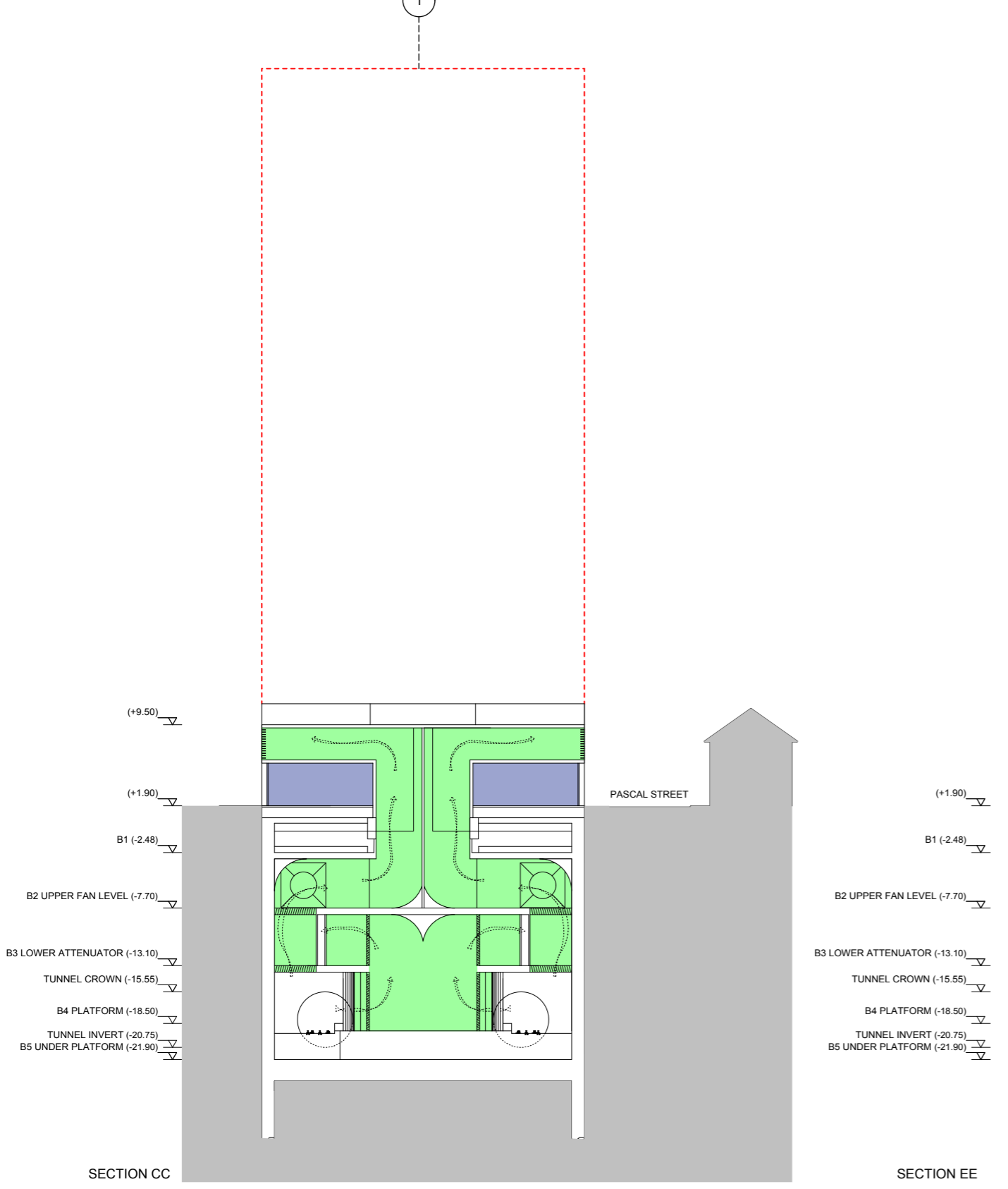
Project: **NORTHERN LINE EXTENSION TO BATTERSEA PLANNING DIRECTION DRAWINGS**

Drawing: **NINE ELMS STATION SECTION CC & EE**

Suitability: **S4 FORMAL ISSUE TO CLIENT**

Drawn by: SM Date: 10/04/13
Checked by: FM Date: 10/04/13
Approved by: SL Date: 10/04/13
Drawing Scale: 1:250 @ A1 or 1:500 @ A3

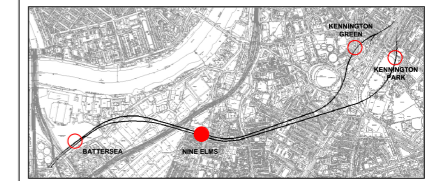
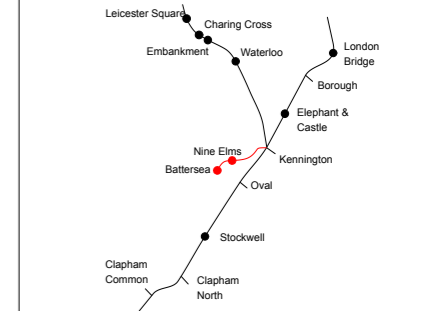
Drawing No: **GRNLEB-SDA-ST-XX-DR-ARC-42509** Revision: **06**



PLANNING DIRECTION DRAWING NUMBER 35

1

Location Plan



Canopy / Rooflight
Forecourt / Access
Tickethall / Entrance
Paid Concourse
Internal Accommodation
Ducts / Risers
Lift
Emergency Lift (plant replacement)
Escape Route

1. OUTLINE OF POTENTIAL DEVELOPMENT INCLUDING VENTILATION SHAFTS



Internal layouts are illustrative only. Detailed design for above ground elements will be subject to further approvals

Rev	By	Chkd	Apprvd	Date	Description
05	SM	FM	SL	04/04/13	Elevation reflecting OSD
04	SM	FM	SL	25/03/13	Formal Issue
03	SM	FM	SL	20/03/13	General Update
02	SM	FM	SL	11/03/13	General Update
01	SM	FM	SL	04/03/13	First Drawn

Client
Transport for London



Halcrow Group Ltd.
A CH2M HILL COMPANY
Elms House, 43 Brook Green
HammerSmith, London W6 7EF
TEL: 020 3479 8000
FAX: 020 3479 8001
www.halcrow.com



Project:
**NORTHERN LINE EXTENSION
TO BATTERSEA
PLANNING DIRECTION DRAWINGS**

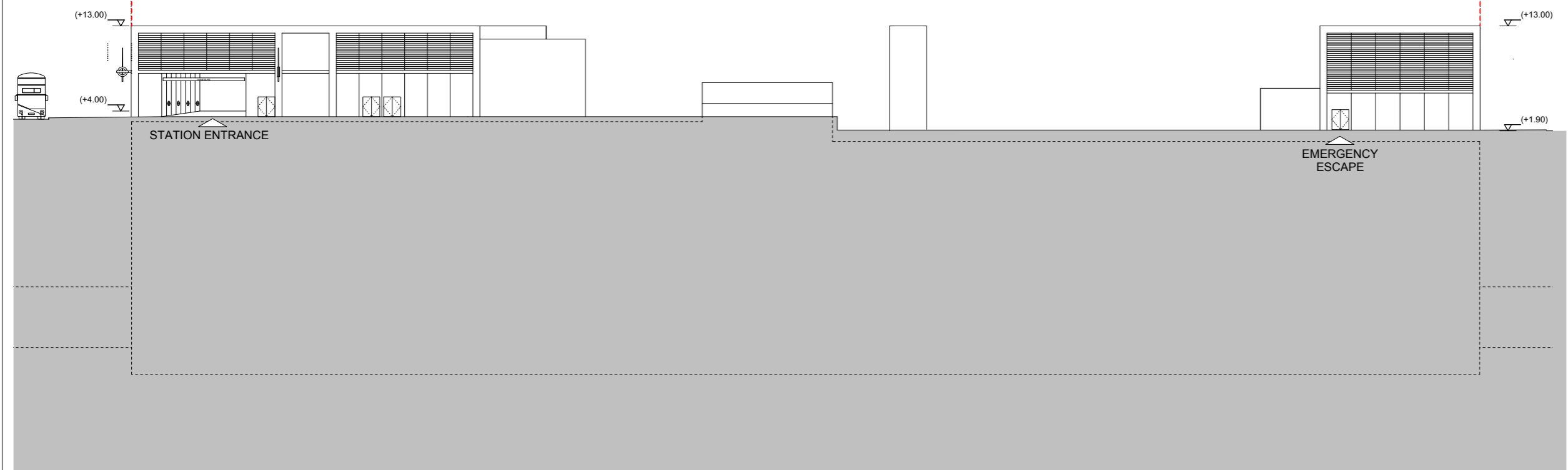
Drawing:
**NINE ELMS STATION
NORTH ELEVATION**

Suitability:
S4 FORMAL ISSUE TO CLIENT

Drawn by: SM Date: 04/04/13
Checked by: FM Date: 04/04/13
Approved by: SL Date: 04/04/13
Drawing Scale: 1:250 @ A1 or 1:500 @ A3

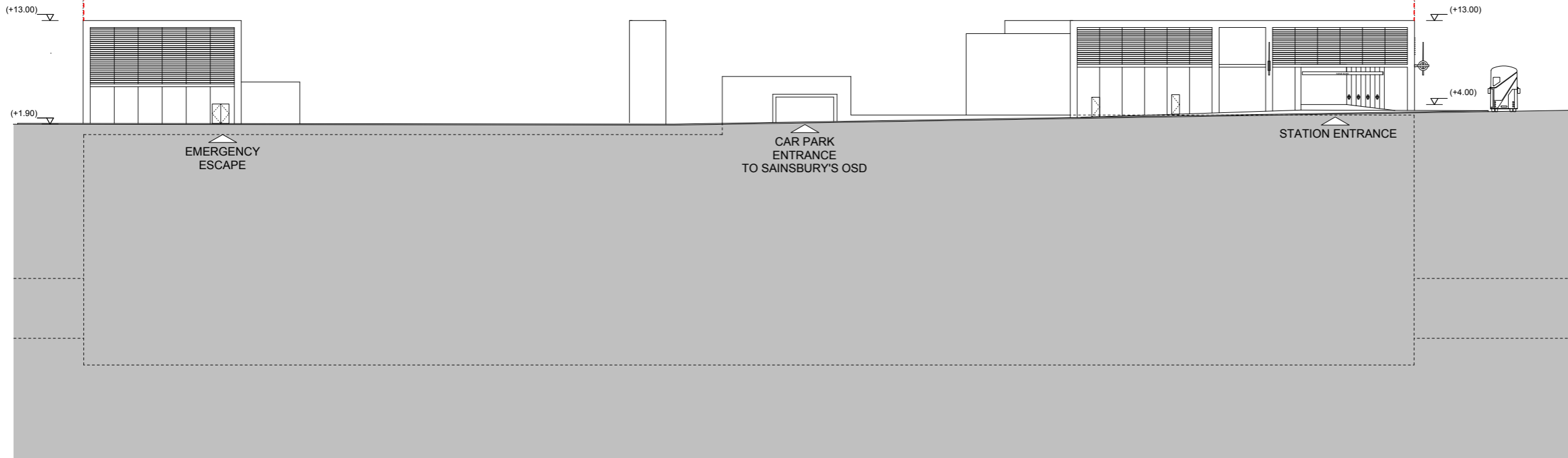
Drawing No.: GRNLEB-SDA-ST-XX-DR-ARC-42513 Revision: 05

PLANNING DIRECTION DRAWING NUMBER 36



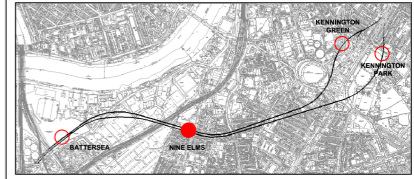
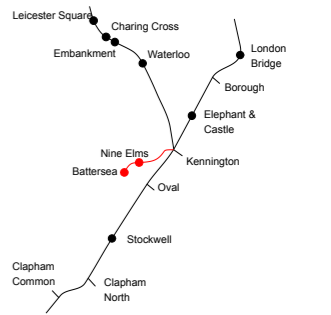
E1: NORTH ELEVATION

1



E2: SOUTH ELEVATION

Location Plan



Canopy / Rooflight
Forecourt / Access
Tickethall / Entrance
Paid Concourse
Internal Accommodation
Ducts / Risers
Lift
Emergency Lift (plant replacement)
Escape Route

1. OUTLINE OF POTENTIAL DEVELOPMENT INCLUDING VENTILATION SHAFTS



SCALE 1:250 (A1) METRES

Internal layouts are illustrative only. Detailed design for above ground elements will be subject to further approvals

Rev	By	Chkd	Apprvd	Date	Description
05	SM	FM	SL	04/04/13	Elevation reflecting OSD
04	SM	FM	SL	25/03/13	Formal Issue
03	SM	FM	SL	20/03/13	General Update
02	SM	FM	SL	11/03/13	General Update
01	SM	FM	SL	04/03/13	First Drawn

Client

Transport for London



Halcrow Group Ltd.
 A CH2M HILL COMPANY
 Elms House, 43 Brook Green
 Hammermith, London W6 7EF
 TEL: 020 3479 8000
 FAX: 020 3479 8001
 www.halcrow.com



Project: NORTHERN LINE EXTENSION TO BATTERSEA
 PLANNING DIRECTION DRAWINGS

Drawing: NINE ELMS STATION
 SOUTH ELEVATION

Suitability: S4 FORMAL ISSUE TO CLIENT

Drawn by: SM Date: 04/04/13

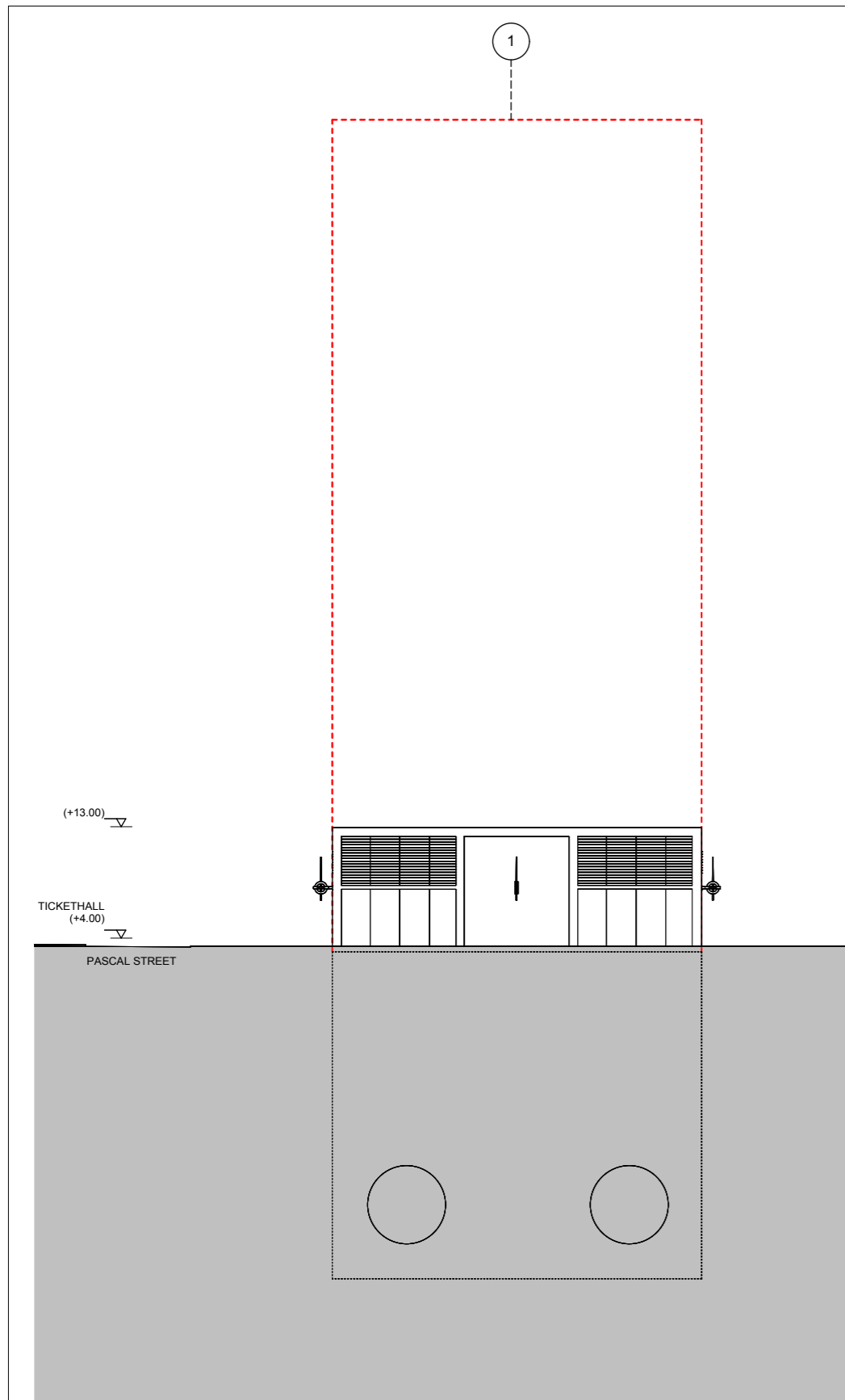
Checked by: FM Date: 04/04/13

Approved by: SL Date: 04/04/13

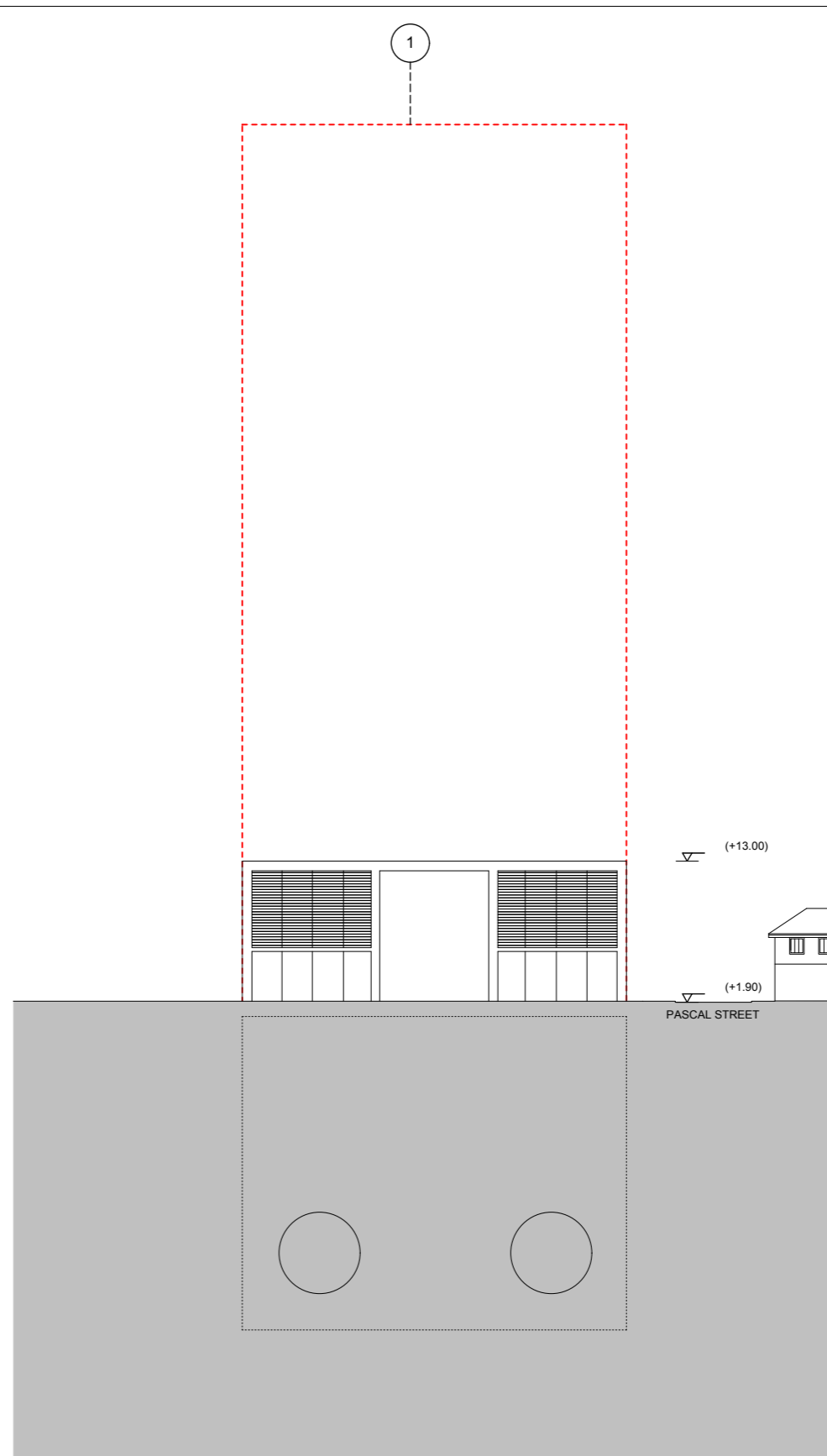
Drawing Scale: 1:250 @ A1 or 1:500 @ A3

Drawing No: GRNLEB-SDA-ST-XX-DR-ARC-42514 Revision: 05

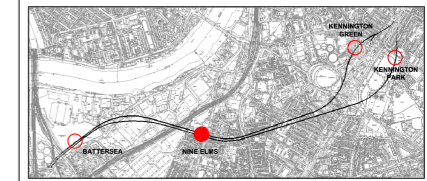
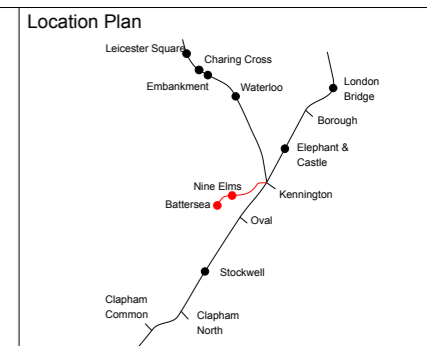
PLANNING DIRECTION DRAWING NUMBER 37



E3: EAST ELEVATION

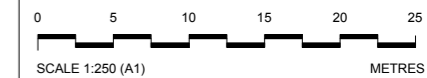


E2: WEST ELEVATION



Canopy / Rooflight
Forecourt / Access
Tickethall / Entrance
Paid Concourse
Internal Accommodation
Ducts / Risers
Lift
Emergency Lift (plant replacement)
Escape Route

1. OUTLINE OF POTENTIAL DEVELOPMENT INCLUDING VENTILATION SHAFTS



Internal layouts are illustrative only. Detailed design for above ground elements will be subject to further approvals

Rev	By	Chkd	Apprvd	Date	Description
05	SM	FM	SL	04/04/13	Elevation reflecting OSD
04	SM	FM	SL	25/03/13	Formal Issue
03	SM	FM	SL	20/03/13	General Update
02	SM	FM	SL	11/03/13	General Update
01	SM	FM	SL	04/03/13	First Drawn

Client
Transport for London



Halcrow Group Ltd.
A CH2M HILL COMPANY
Elms House, 43 Brook Green
Hammermith, London W6 7EF
TEL: 020 3479 8000
FAX: 020 3479 8001
www.halcrow.com



Project:
**NORTHERN LINE EXTENSION TO BATTERSEA
PLANNING DIRECTION DRAWINGS**

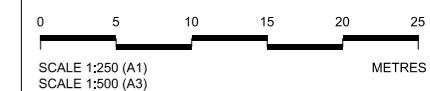
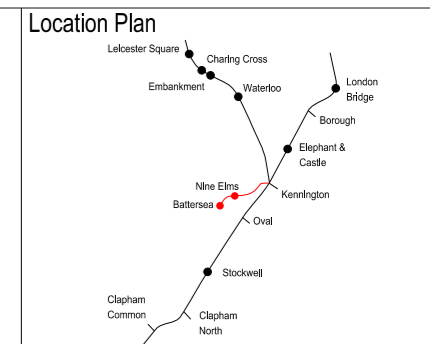
Drawing:
**NINE ELMS STATION
EAST AND WEST ELEVATIONS**

Suitability:
S4 FORMAL ISSUE TO CLIENT

Drawn by: SM Date: 04/04/13
Checked by: FM Date: 04/04/13
Approved by: SL Date: 04/04/13
Drawing Scale: 1:250 @ A1 or 1:500 @ A3

Drawing No.: GRNLEB-SDA-ST-XX-DR-ARC-42515 Revision: 05

PLANNING DIRECTION DRAWING NUMBER 38



This drawing is illustrative only. Detailed design will be subject to further approvals.

--- outline of potential development including ventilation shafts



SOUTH ELEVATION

Station Entrance

Rev	By	Chkd	App	Date	Description
06	RR	KW	KW	04/04/13	Formal Issue
05	LB	KW	KW	25/03/13	Formal Issue
04	KD	KW	KW	15/03/13	Minor Amendments
03	RR	KW	KW	11/03/13	Planning Direction Drawing Number Amended
02	RR	KW	KW	07/03/13	Planning Direction Drawing Number Added
01	RR	KW	KW	04/03/13	Minor Amendments

Client
Transport for London

JOHN MCASLAN + PARTNERS
studiodareARCHITECTS
Buro Happold Consulting Engineers

Halcrow Group Ltd.
A CH2M HILL COMPANY
Elms House, 43 Brook Green
Hammersmith, London W6 7EF
TEL: 020 3479 8000
FAX: 020 3479 8001
www.halcrow.com



Project:
**NORTHERN LINE EXTENSION TO BATTERSEA
PLANNING DIRECTION DRAWINGS**

Drawing:
**NINE ELMS
SOUTH ELEVATION WITH ILLUSTRATIVE OSD**

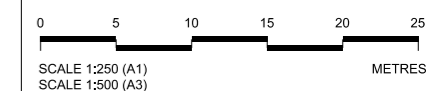
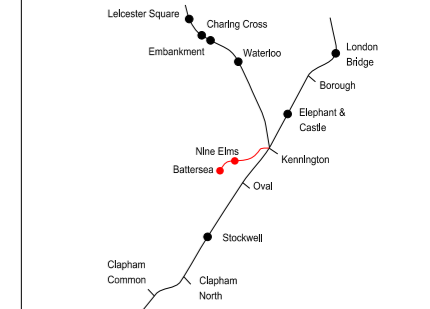
Submittal:
S4 FORMAL ISSUE TO CLIENT

Drawn by: RR Date: 19/02/13
Checked by: KW Date: 19/02/13
Approved by: HA Date: 19/02/13
Drawing Scale: 1:250 @ A1 or 1:500 @ A3

Drawing No.: **1453-NE-F000-E-01** Revision: **06**

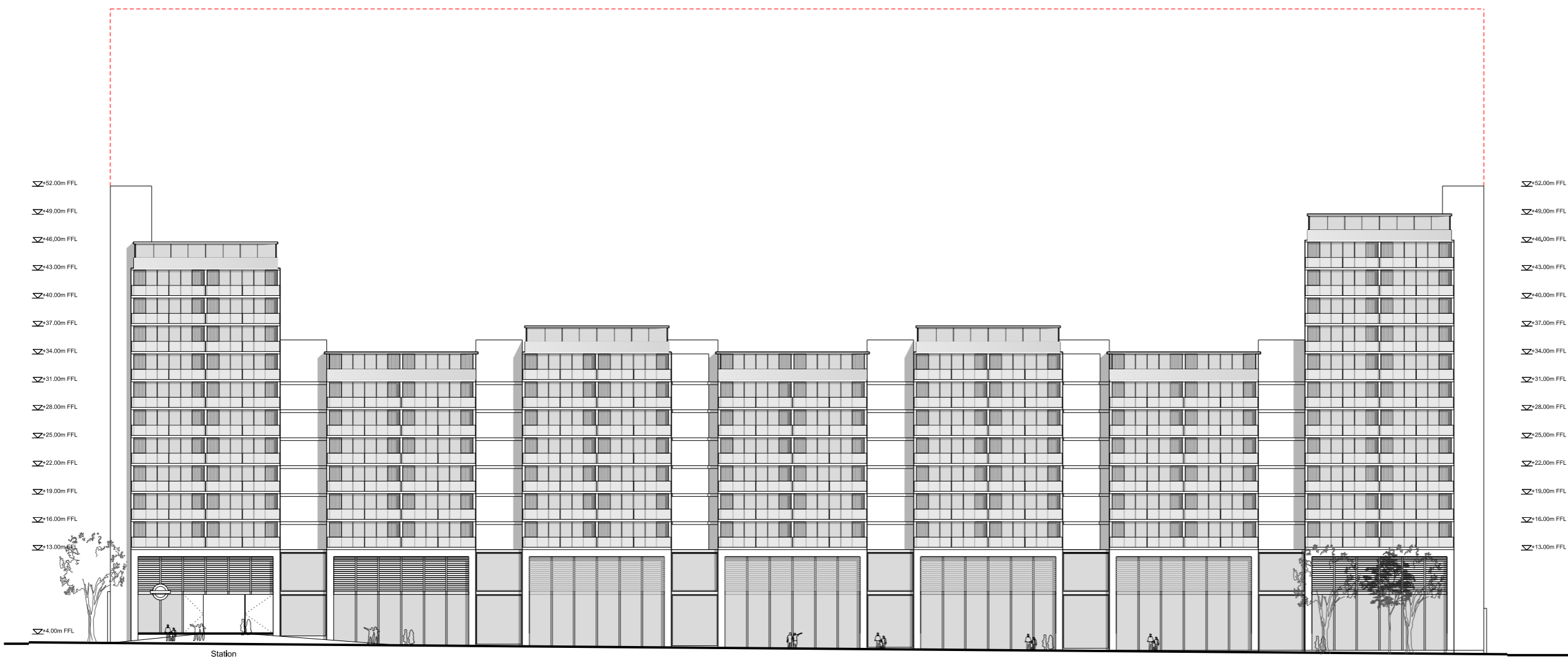
PLANNING DIRECTION DRAWING NUMBER 39

Location Plan



This drawing is illustrative only. Detailed design will be subject to further approvals.

--- outline of potential development including ventilation shafts



NORTH ELEVATION

Rev	By	Chkd	App	Date	Description
06	RR	KW	KW	04/04/13	Formal Issue
05	LB	KW	KW	25/03/13	Formal Issue
04	KD	KW	KW	15/03/13	Minor Amendments
03	RR	KW	KW	11/03/13	Planning Direction Drawing Number Amended
02	RR	KW	KW	07/03/13	Planning Direction Drawing Number Added
01	RR	KW	KW	04/03/13	Minor Amendments

Client
Transport for London

JOHN MCASLAN + PARTNERS

studiodareARCHITECTS

Buro Happold
Consulting Engineers

Halcrow Group Ltd,
A CH2M HILL COMPANY
Elms House, 43 Brook Green
Hammersmith, London W6 7EP
TEL: 020 3479 8000
FAX: 020 3479 8001
www.halcrow.com



Project:
**NORTHERN LINE EXTENSION
TO BATTERSEA
PLANNING DIRECTION DRAWINGS**

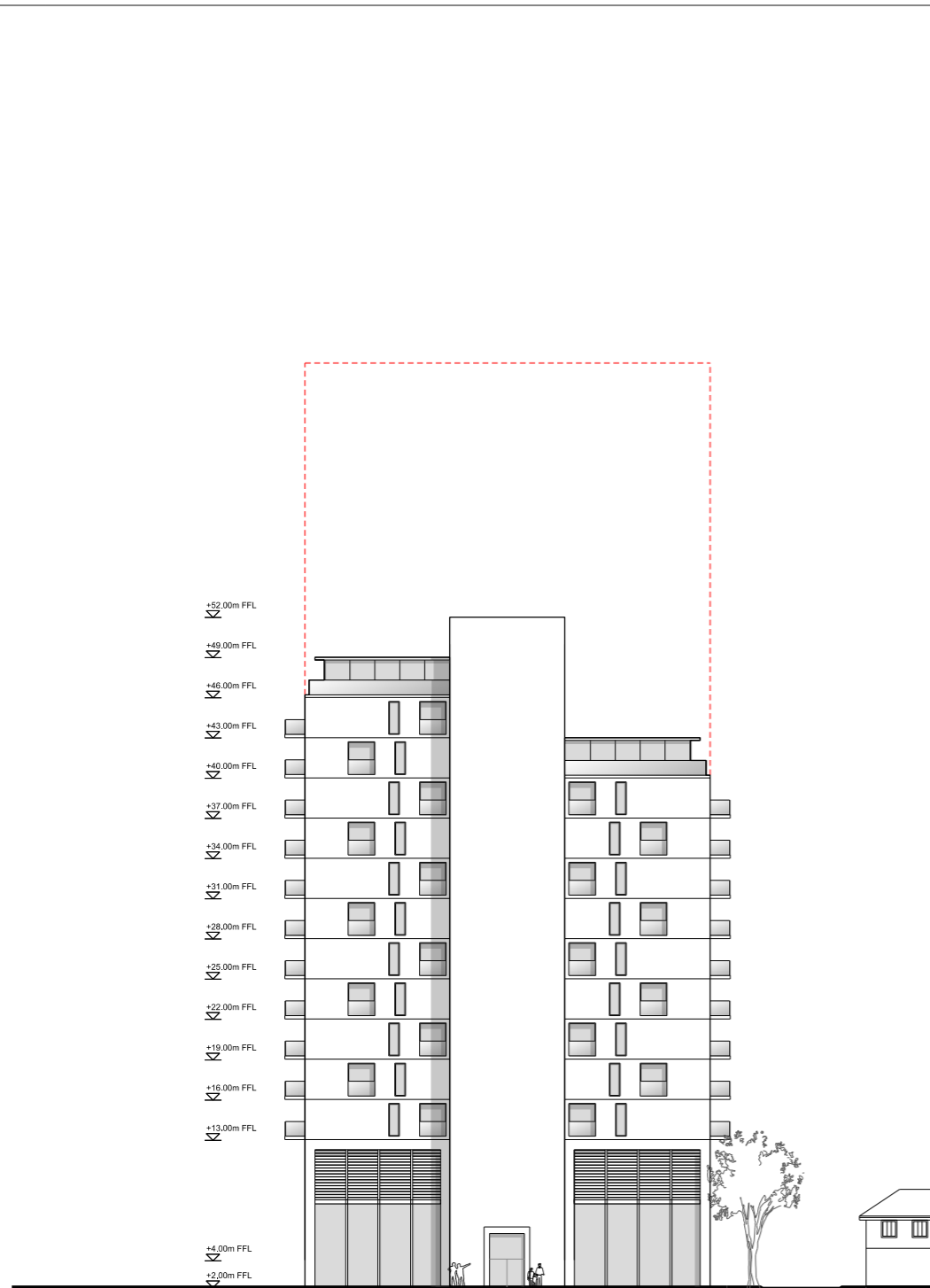
Drawing:
**NINE ELMS
NORTH ELEVATION
WITH ILLUSTRATIVE
OSD**

Submittal:
S4 FORMAL ISSUE TO CLIENT

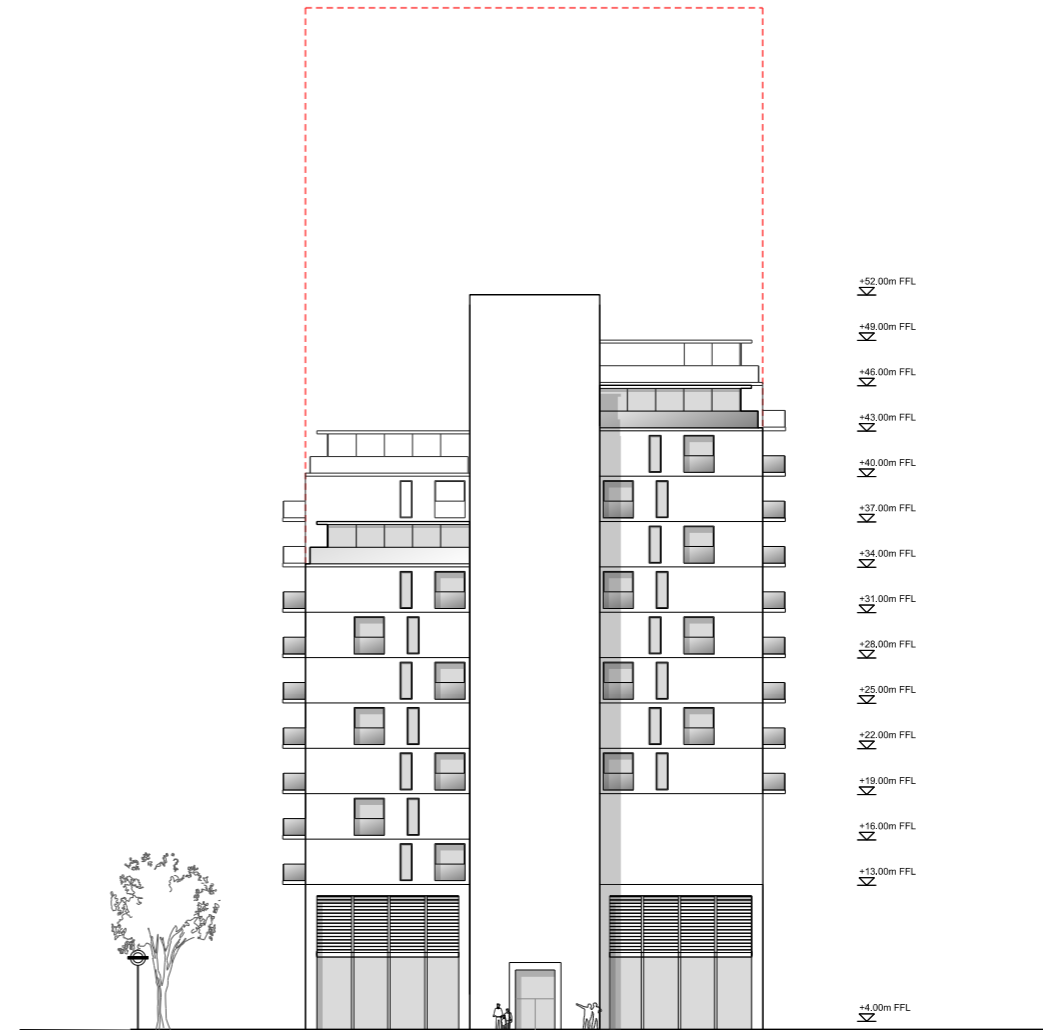
Drawn by: RR Date: 19/02/13
Checked by: KW Date: 19/02/13
Approved by: HA Date: 19/02/13
Drawing Scale: 1:250 @ A1 or 1:500 @ A3

Drawing No.: **1453-NE-F000-E-02** Revision: **06**

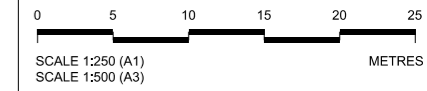
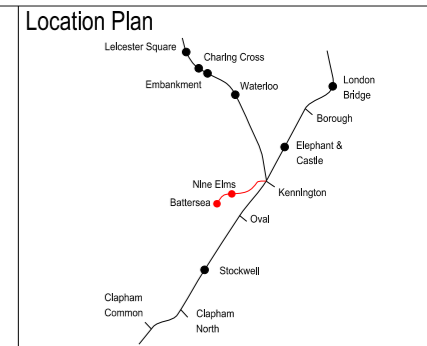
PLANNING DIRECTION DRAWING NUMBER 40



WEST ELEVATION



EAST ELEVATION



This drawing is illustrative only. Detailed design will be subject to further approvals.

--- outline of potential development including ventilation shafts

Rev	By	Chkd	App	Date	Description
06	RR	KW	KW	04/04/13	Formal Issue
05	LB	KW	KW	25/03/13	Formal Issue
04	KD	KW	KW	15/03/13	Minor Amendments
03	RR	KW	KW	11/03/13	Planning Direction Drawing Number Amended
02	RR	KW	KW	07/03/13	Planning Direction Drawing Number Added
01	RR	KW	KW	04/03/13	Minor Amendments

Client
Transport for London

JOHN MCASLAN + PARTNERS
studiodareARCHITECTS
Buro Happold
Consulting Engineers

Halcrow Group Ltd,
A CH2M HILL COMPANY
Elms House, 43 Brook Green
Hammersmith, London W6 7EP
TEL: 020 3479 8000
FAX: 020 3479 8001
www.halcrow.com

Project:
**NORTHERN LINE EXTENSION
TO BATTERSEA
PLANNING DIRECTION DRAWINGS**

Drawing:
**NINE ELMS
WEST AND EAST ELEVATIONS
WITH ILLUSTRATIVE
OSD**

Submittal:
S4 FORMAL ISSUE TO CLIENT

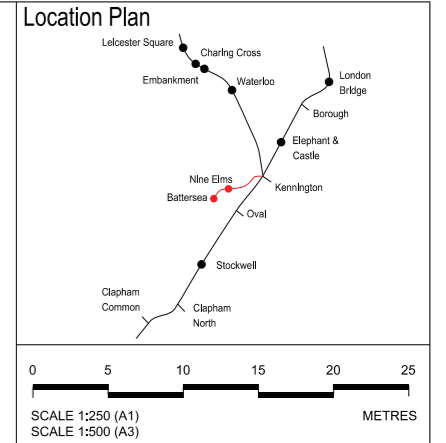
Drawn by: RR Date: 19/02/13
Checked by: KW Date: 19/02/13
Approved by: HA Date: 19/02/13
Drawing Scale: 1:250 @ A1 or 1:500 @ A3

Drawing No.: **1453-NE-F000-E-03** Revision: **06**

PLANNING DIRECTION DRAWING NUMBER 41



- Key**
- 1. Nine Elms Station building
 - 2. Adjacent development
 - 3. Avenue trees
 - 4. Barclays cycle hire
 - 5. Way finding
 - 6. Cycle stands
 - 7. Feature trees
 - 8. Inground lighting and artworks
 - 9. Pedestrian crossing
 - 10. Paved carriageway
 - 11. Security bollards



This drawing is illustrative only. Detailed design will be subject to further approvals.



Rev	By	Chkd	App	Date	Description
08	YT	KW	HA	27/03/13	Formal issue to client
07	YT	KW	HA	25/03/13	Formal issue
06	YT	KW	HA	21/03/13	Minor amendments
05	YT	KW	HA	14/03/13	Minor amendments
04	YT	KW	HA	11/03/13	Planning direction drawing number amended
03	YT	KW	HA	07/03/13	Planning direction drawing number added
02	YT	KW	HA	04/03/13	Engineering changes and minor amendments
01	YT	KW	HA	27/02/13	Draft
00	YT	KW	HA	19/02/13	Draft

Client
Transport for London

JOHN MCASLAN + PARTNERS
studiodareARCHITECTS
Buro Happold
Consulting Engineers

Halcrow Group Ltd.
A CH2M HILL COMPANY
Elma House, 43 Brook Green
Hammersmith, London W6 7EF
TEL: 020 3479 8000
FAX: 020 3479 8001
www.halcrow.com



Project:
**NORTHERN LINE EXTENSION TO BATTERSEA
PLANNING DIRECTION DRAWINGS**

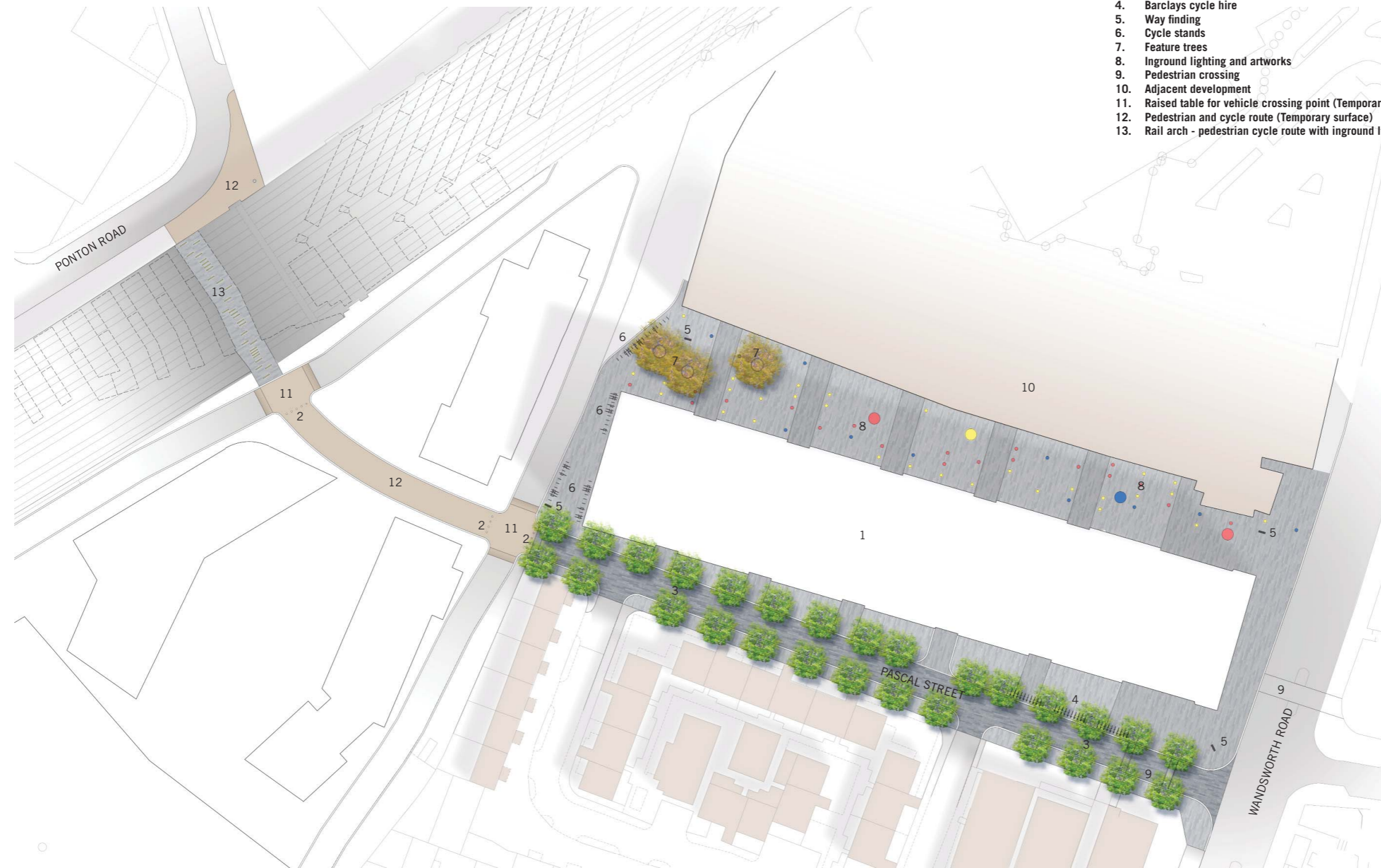
Drawing:
**NINE ELMS STATION PROPOSED
Landscape Masterplan**

Submittal:
S4 FORMAL ISSUE TO CLIENT

Drawn by: KD Date: 06/02/13
Checked by: KW Date: 06/02/13
Approved by: HA Date: 06/02/13
Drawing Scale: 1:250 @ A1 or 1:500 @ A3

Drawing No.: 1453-NE-G710-P-00
Revision: 08

PLANNING DIRECTION DRAWING NUMBER 42



- Key**
1. Nine Elms Station building
 2. Security bollards
 3. Avenue trees
 4. Barclays cycle hire
 5. Way finding
 6. Cycle stands
 7. Feature trees
 8. Inground lighting and artworks
 9. Pedestrian crossing
 10. Adjacent development
 11. Raised table for vehicle crossing point (Temporary surface)
 12. Pedestrian and cycle route (Temporary surface)
 13. Rail arch - pedestrian cycle route with inground lighting feature



This drawing is illustrative only. Detailed design will be subject to further approvals.



Rev	By	Chkd	App	Date	Description
09	YT	KW	HA	27/03/13	Formal Issue to client
08	YT	KW	HA	25/03/13	Formal Issue
07	YT	KW	HA	21/03/13	Minor amendments
06	YT	KW	HA	18/03/13	Minor amendments
05	YT	KW	HA	14/03/13	Minor amendments
04	YT	KW	HA	11/03/13	Planning direction drawing number amended
03	YT	KW	HA	07/03/13	Planning direction drawing number added
02	YT	KW	HA	04/03/13	Engineering changes and minor amendments
01	YT	KW	HA	27/02/13	Draft
00	YT	KW	HA	19/02/13	Draft

Client
Transport for London

JOHN MCASLAN + PARTNERS
studiodareARCHITECTS
Buro Happold
Consulting Engineers

Halcrow Group Ltd.
A CH2M HILL COMPANY
Elms House, 43 Brook Green
Hammersmith, London W6 7EF
TEL: 020 3479 8000
FAX: 020 3479 8001
www.halcrow.com



Project:
**NORTHERN LINE EXTENSION
TO BATTERSEA
PLANNING DIRECTION DRAWINGS**

Drawing:
**NINE ELMS STATION
PROPOSED
CONTEXTUAL LANDSCAPE MASTERPLAN**

Submittal:
S4 FORMAL ISSUE TO CLIENT

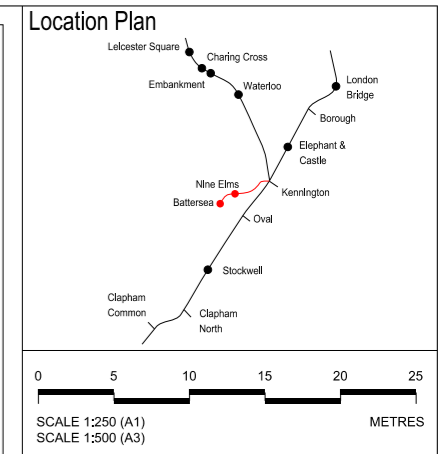
Drawn by: KD Date: 06/02/13
Checked by: KW Date: 06/02/13
Approved by: HA Date: 06/02/13
Drawing Scale: 1:500@A1, 1:1000@A3

Drawing No.: 1453-NE-G710-P-01
Revision: 09

PLANNING DIRECTION DRAWING NUMBER 43



- KEY**
- Building
 - Footpath
 - Grassed Area
 - Park Fences
 - Existing Trees



Rev	By	Chkd	App	Date	Description
06	YT	KW	HA	27/03/13	Formal issue to client
05	YT	KW	HA	25/03/13	Formal issue
04	YT	KW	HA	18/03/13	Planning direction drawing number amended, minor changes
03	YT	KW	HA	11/03/13	Planning direction drawing number amended, minor changes
02	YT	KW	HA	07/03/13	Planning direction drawing number added
01	YT	KW	HA	04/03/13	Minor amendments
00	YT	KW	HA	19/02/13	Draft

Client

Transport for London

JOHN MCASLAN + PARTNERS

studiodareARCHITECTS



Halcrow Group Ltd,
A CH2M HILL COMPANY
Elms House, 43 Brook Green
Hammersmith, London W6 7EP
TEL: 020 3479 8000
FAX: 020 3479 8001
www.halcrow.com



Project: **NORTHERN LINE EXTENSION TO BATTERSEA PLANNING DIRECTION DRAWINGS**

Drawing: **KENNINGTON PARK HEAD HOUSE & COMMUNITY CENTRE EXISTING SITE PLAN**

Submittal: **S4 FORMAL ISSUE TO CLIENT**

Drawn by: WS Date: 19/02/13

Checked by: KW Date: 19/02/13

Approved by: HA Date: 19/02/13

Drawing Scale: 1:250 @ A1 or 1:500 @ A3

Drawing No.: **1453-KP-G710-XP-00** Rev/Issue: **06**

PLANNING DIRECTION DRAWING NUMBER 44



EAST ELEVATION

Lodge



NORTH ELEVATION

Lodge

Bee Keeping Centre



WEST ELEVATION

Bee Keeping Centre

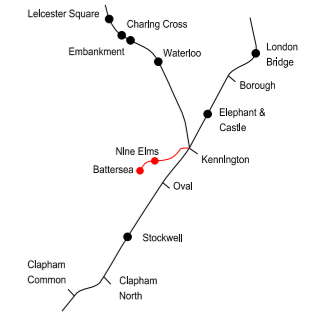
Lodge



SOUTH ELEVATION

Lodge

Location Plan



0 2 4 6 8 10 METRES

SCALE 1:100 (A1)
SCALE 1:200 (A3)

Rev	By	Chkd	App	Date	Description
04	KD	KW	KW	25/03/13	Formal Issue
03	KD	KW	KW	15/03/13	Planning Direction Drawing Number Amended
02	RR	KW	KW	11/03/13	Planning Direction Drawing Number Amended
01	RR	KW	KW	07/03/13	Planning Direction Drawing Number Added

Client

Transport for London

JOHN MCASLAN + PARTNERS

studiodareARCHITECTS



Halcrow Group Ltd.
A CH2M HILL COMPANY
Elms House, 43 Brook Green
Hammersmith, London W6 7EF
TEL: 020 3479 8000
FAX: 020 3479 8001
www.halcrow.com



Project:

NORTHERN LINE EXTENSION
TO BATTERSEA
PLANNING DIRECTION DRAWINGS

Drawing:

KENNINGTON PARK HEAD HOUSE
& COMMUNITY CENTRE
EXISTING LODGE
ELEVATIONS

Suitability:

S4 FORMAL ISSUE TO CLIENT

Drawn by: RR Date: 08/03/13

Checked by: KW Date: 08/03/13

Approved by: HA Date: 08/03/13

Drawing Scale: 1:100 @ A1 or 1:200 @ A3

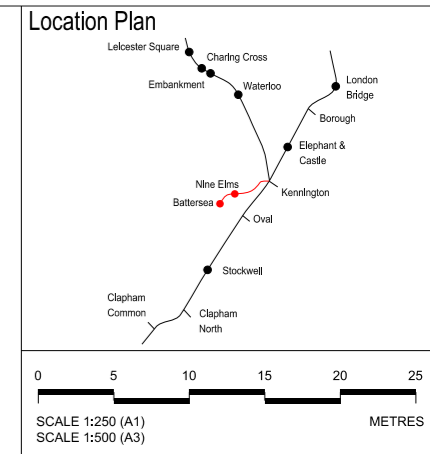
Drawing No.:

1453-KP-F000-XE-01

Revision:

04

PLANNING DIRECTION DRAWING NUMBER 45



This drawing is for approval save for internal layouts which are illustrative only.

Canopy/ Rooflight
Forecourt
Tickethall / Entrance
Paid Concourse
Internal Accommodation
Ducts / Risers
Lift
Emergency Lift (plant replacement)
Escape Route
Community Centre



Rev	By	Chkd	App	Date	Description
08	LB	KW	KW	02/04/13	Formal Issue
07	KD	KW	KW	25/03/13	Formal Issue
06	KD	KW	KW	15/03/13	Minor Amendments
05	RR	KW	KW	13/03/13	Minor Amendments
04	RR	KW	KW	11/03/13	Planning Direction Drawing Number Amended and Minor Amendments
03	RR	KW	KW	07/03/13	Planning Direction Drawing Number Added
02	RR	KW	KW	04/03/13	Engineering Changes and Minor Amendments
01	RR	KW	KW	27/02/13	Engineering Changes

Client
Transport for London

JOHN MCASLAN + PARTNERS
studiodareARCHITECTS
Buro Happold
Consulting Engineers

Halcrow Group Ltd.
A CH2M HILL COMPANY
Elms House, 43 Brook Green
Hammersmith, London W6 7EF
TEL: 020 3479 8000
FAX: 020 3479 8001
www.halcrow.com



Project:
**NORTHERN LINE EXTENSION
TO BATTERSEA
PLANNING DIRECTION DRAWINGS**

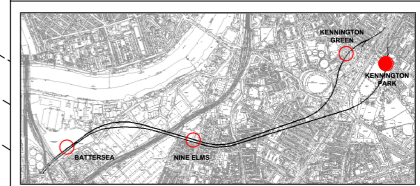
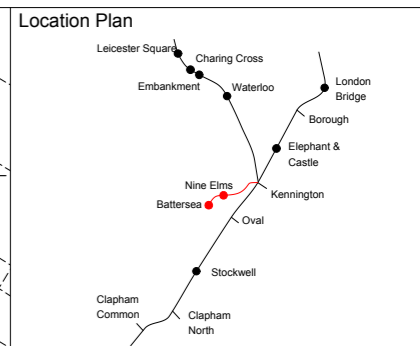
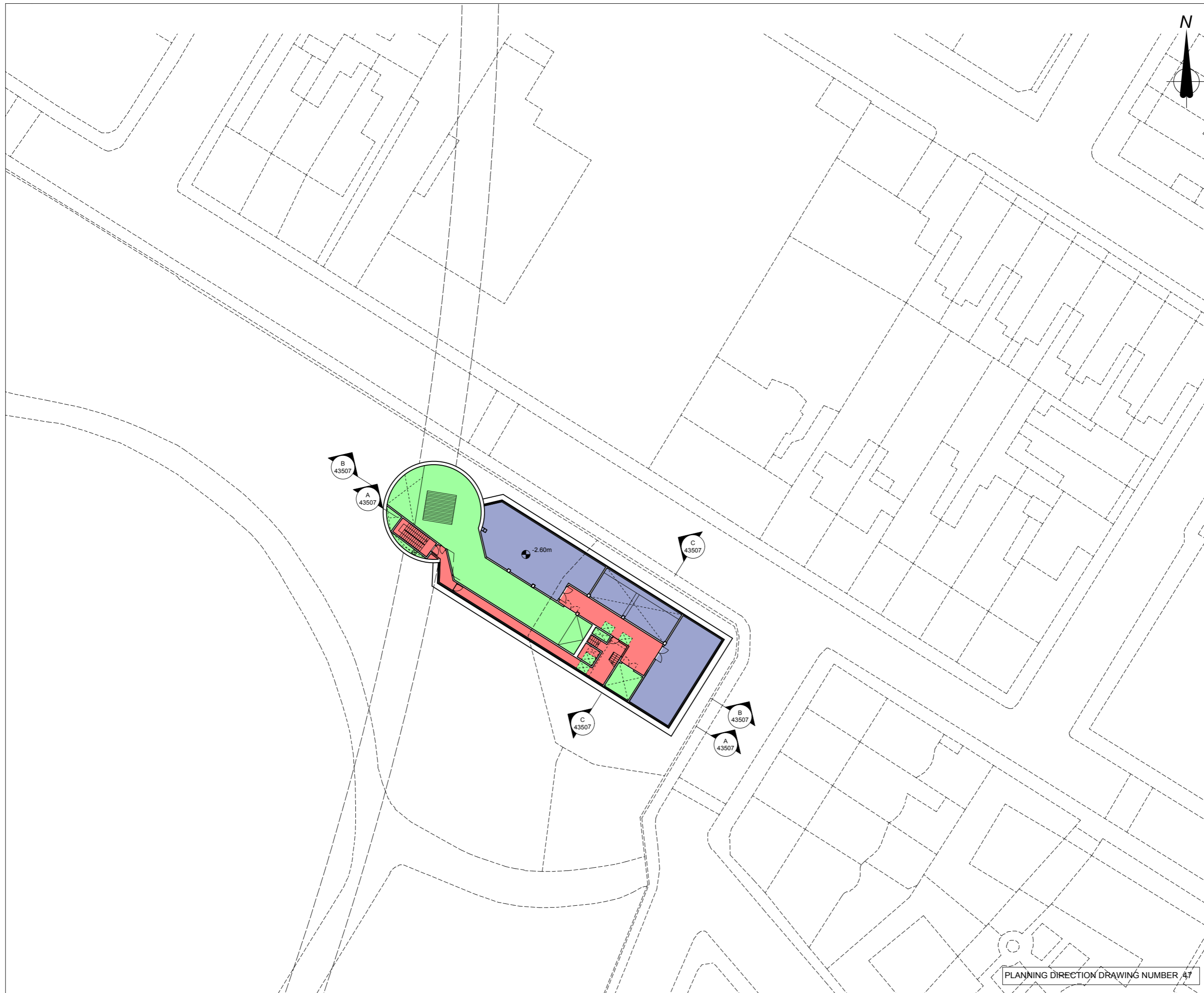
Drawing:
**KENNINGTON PARK HEAD HOUSE
& COMMUNITY CENTRE
PROPOSED
GROUND FLOOR, MEZZANINE PLAN
& ROOF PLAN**

Suitability:
S4 FORMAL ISSUE TO CLIENT

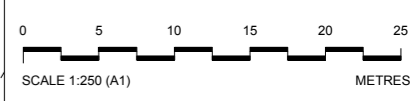
Drawn by: WS Date: 19/02/13
Checked by: KW Date: 19/02/13
Approved by: HA Date: 19/02/13
Drawing Scale: 1:250 @ A1 or 1:500 @ A3

Drawing No.: **1453-KP-F000-P-00** Revision: **08**

PLANNING DIRECTION DRAWING NUMBER 46



Canopy / Rooflight
Forecourt / Access
Tickethall / Entrance
Paid Concourse
Internal Accommodation
Ducts / Risers
Lift
Emergency Lift (plant replacement)
Escape Route



Internal layouts are illustrative only.

Rev	By	Chkd	Apprvd	Date	Description
05	SM	FM	SL	13/04/13	General Update
04	SM	FM	SL	25/03/13	Formal Issue
03	SM	FM	SL	20/03/13	General Update
02	SM	FM	SL	11/03/13	General Update
01	SM	FM	SL	04/03/13	First Drawn

Client
Transport for London



Halcrow Group Ltd.
A CH2M HILL COMPANY
Elms House, 43 Brook Green
HammerSmith, London W6 7EP
TEL: 020 3479 8000
FAX: 020 3479 8001
www.halcrow.com



Project:
**NORTHERN LINE EXTENSION
TO BATTERSEA
PLANNING DIRECTION DRAWINGS**

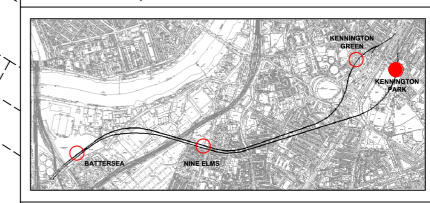
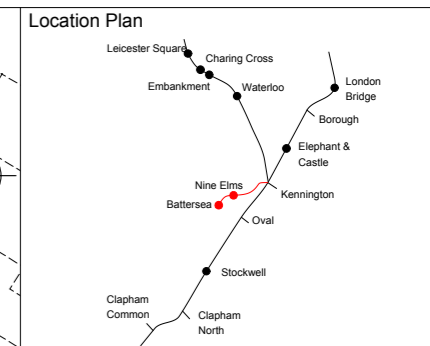
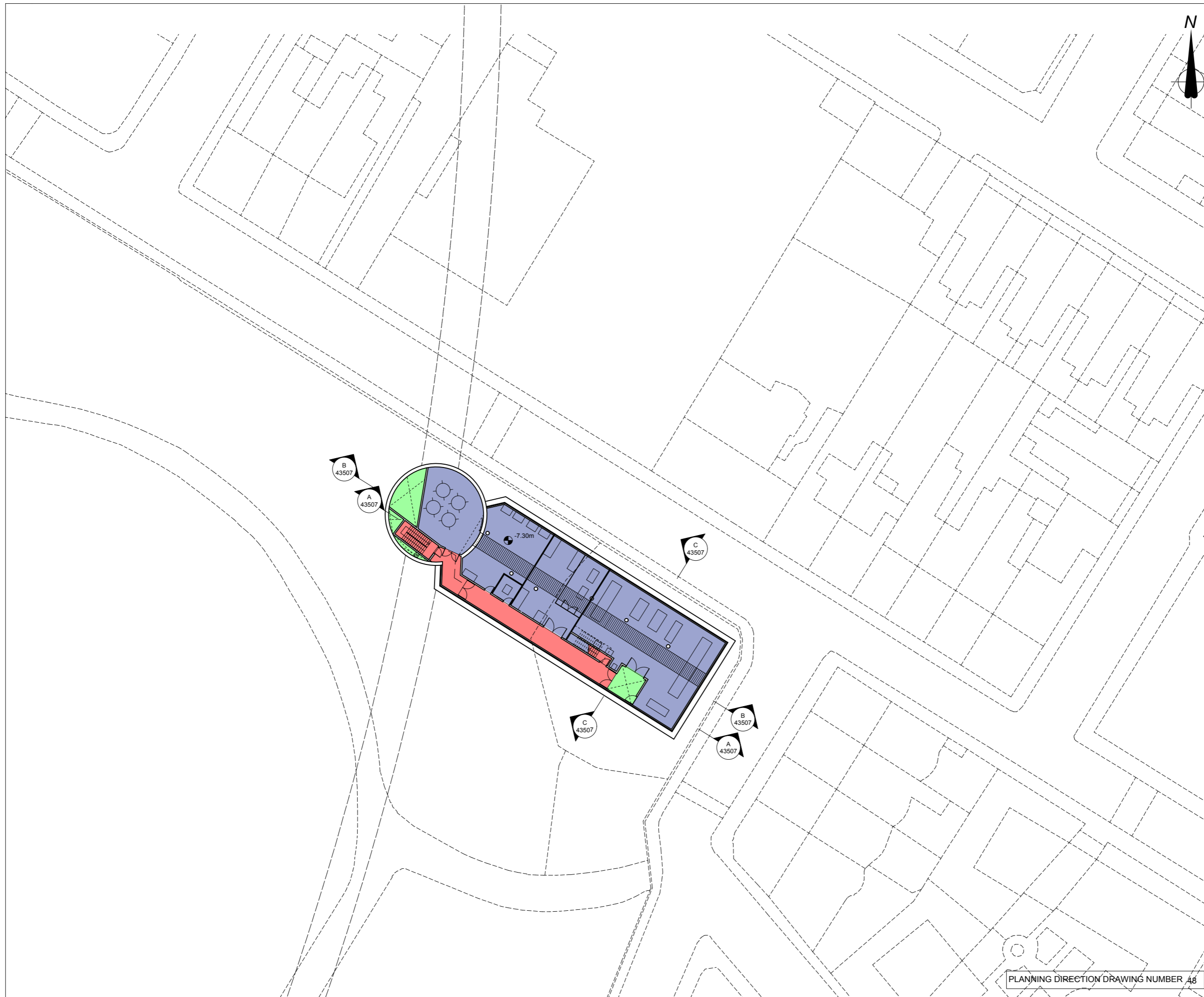
Drawing:
**KENNINGTON PARK
BASEMENT 01 LEVEL**

Suitability:
S4 FORMAL ISSUE TO CLIENT

Drawn by:	SM	Date:	04/03/13
Checked by:	FM	Date:	04/03/13
Approved by:	SL	Date:	04/03/13
Drawing Scale: 1:250 at A1 or 1:500 at A3			

Drawing No:	GRNLEB-SDA-TU-XX-DR-ARC-43503	Revision:	05
-------------	-------------------------------	-----------	----

PLANNING DIRECTION DRAWING NUMBER 47



Blue	Canopy / Rooflight
Grey	Forecourt / Access
Light Blue	Tickethall / Entrance
Dark Blue	Paid Concourse
Purple	Internal Accommodation
Green	Ducts / Risers
Yellow	Lift
Red	Emergency Lift (plant replacement)
Pink	Escape Route



Internal layouts are illustrative only.

Rev	By	Chkd	Apprvd	Date	Description
05	SM	FM	SL	13/04/13	General Update
04	SM	FM	SL	25/03/13	Formal Issue
03	SM	FM	SL	20/03/13	General Update
02	SM	FM	SL	11/03/13	General Update
01	SM	FM	SL	04/03/13	First Drawn

Client
Transport for London



Halcrow Group Ltd.
A CH2M HILL COMPANY
Elms House, 43 Brook Green
HammerSmith, London W6 7EP
TEL: 020 3479 8000
FAX: 020 3479 8001
www.halcrow.com



Project:
**NORTHERN LINE EXTENSION
TO BATTERSEA
PLANNING DIRECTION DRAWINGS**

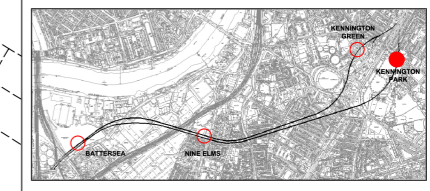
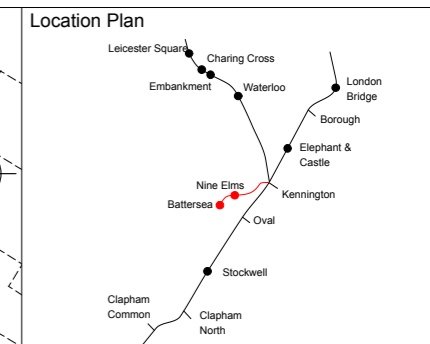
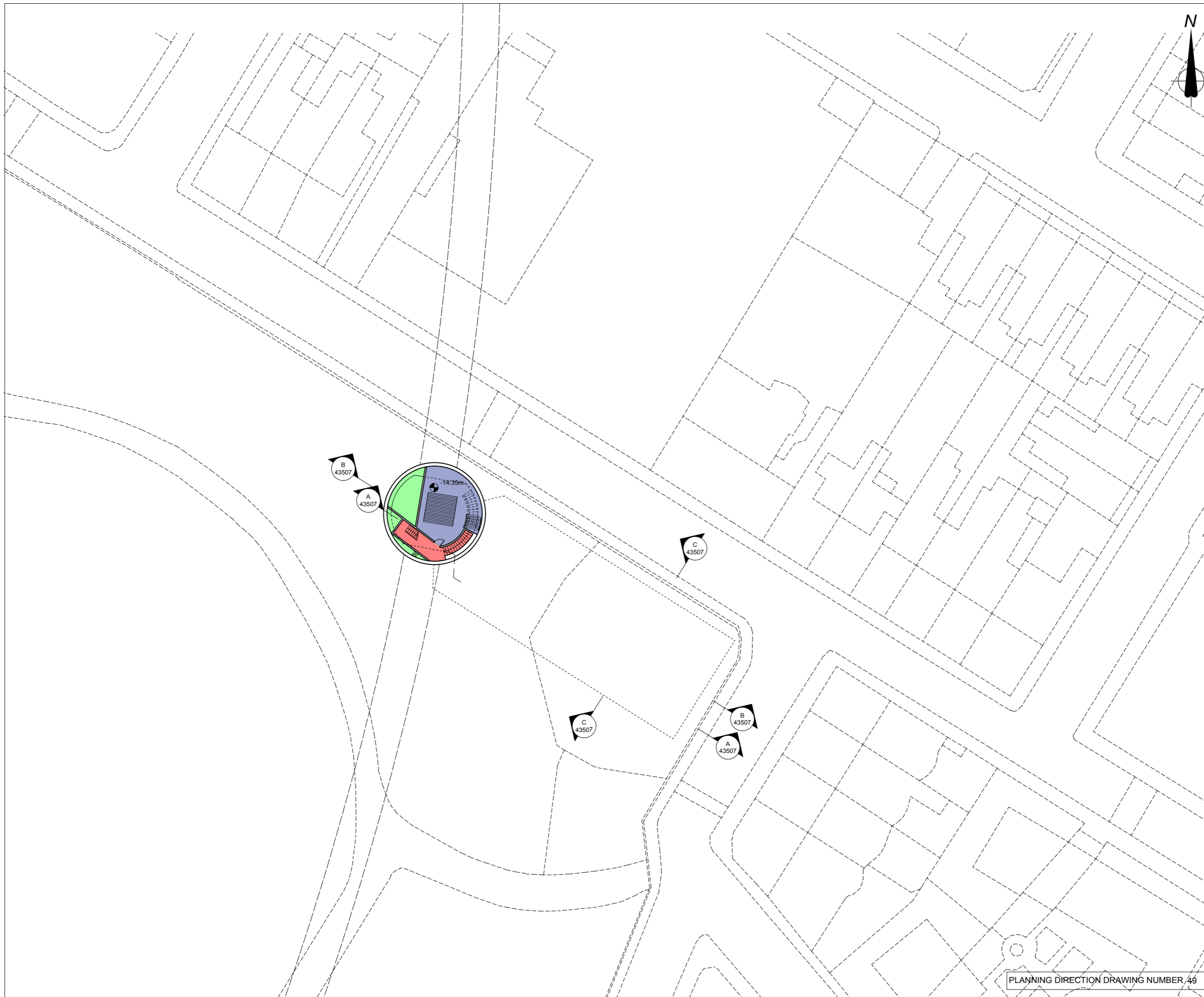
Drawing:
**KENNINGTON PARK
BASEMENT 02 LEVEL**

Suitability:
S4 FORMAL ISSUE TO CLIENT

Drawn by:	SM	Date:	04/03/13
Checked by:	FM	Date:	04/03/13
Approved by:	SL	Date:	04/03/13
Drawing Scale: 1:250 at A1 or 1:500 at A3			

Drawing No:	GRNLEB-SDA-TU-XX-DR-ARC-43504	Revision:	05
-------------	-------------------------------	-----------	----

PLANNING DIRECTION DRAWING NUMBER 48



Canopy / Rooflight
Forecourt / Access
Tickethall / Entrance
Paid Concourse
Internal Accommodation
Ducts / Risers
Lift
Emergency Lift (plant replacement)
Escape Route



Internal layouts are illustrative only.

Rev	By	Chkd	Apprvd	Date	Description
05	SM	FM	SL	13/04/13	General Update
04	SM	FM	SL	25/03/13	Formal Issue
03	SM	FM	SL	20/03/13	General Update
02	SM	FM	SL	11/03/13	General Update
01	SM	FM	SL	04/03/13	First Drawn

Client

Transport for London



Halcrow Group Ltd.
A CH2M HILL COMPANY
Elms House, 43 Brook Green
HammerSmith, London W6 7EF
TEL: 020 3479 8000
FAX: 020 3479 8001
www.halcrow.com



Project: **NORTHERN LINE EXTENSION TO BATTERSEA
PLANNING DIRECTION DRAWINGS**

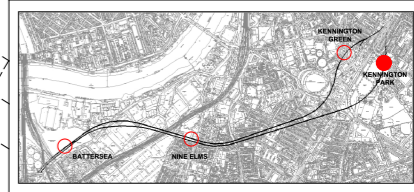
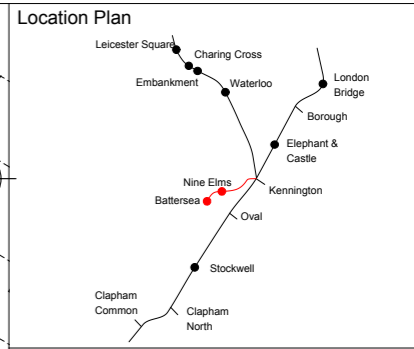
Drawing: **KENNINGTON PARK
BASEMENT 03 LEVEL**

Suitability: **S4 FORMAL ISSUE TO CLIENT**

Drawn by: SM Date: 04/03/13
Checked by: FM Date: 04/03/13
Approved by: SL Date: 04/03/13
Drawing Scale: 1:250 at A1 or 1:500 at A3

Drawing No: **GRNLEB-SDA-TU-XX-DR-ARC-43505** Revision: **05**

PLANNING DIRECTION DRAWING NUMBER 49



Canopy / Rooflight
Forecourt / Access
Tickethall / Entrance
Paid Concourse
Internal Accommodation
Ducts / Risers
Lift
Emergency Lift (plant replacement)
Escape Route



Internal layouts are illustrative only.

Rev	By	Chkd	Apprvd	Date	Description
04	SM	FM	SL	25/03/13	Formal Issue
03	SM	FM	SL	20/03/13	General Update
02	SM	FM	SL	11/03/13	General Update
01	SM	FM	SL	04/03/13	First Drawn

Client
Transport for London



Halcrow Group Ltd.
A CH2M HILL COMPANY
Elms House, 43 Brook Green
Hammersmith, London W6 7EF
TEL: 020 3479 8000
FAX: 020 3479 8001
www.halcrow.com



Project: **NORTHERN LINE EXTENSION TO BATTERSEA**
PLANNING DIRECTION DRAWINGS

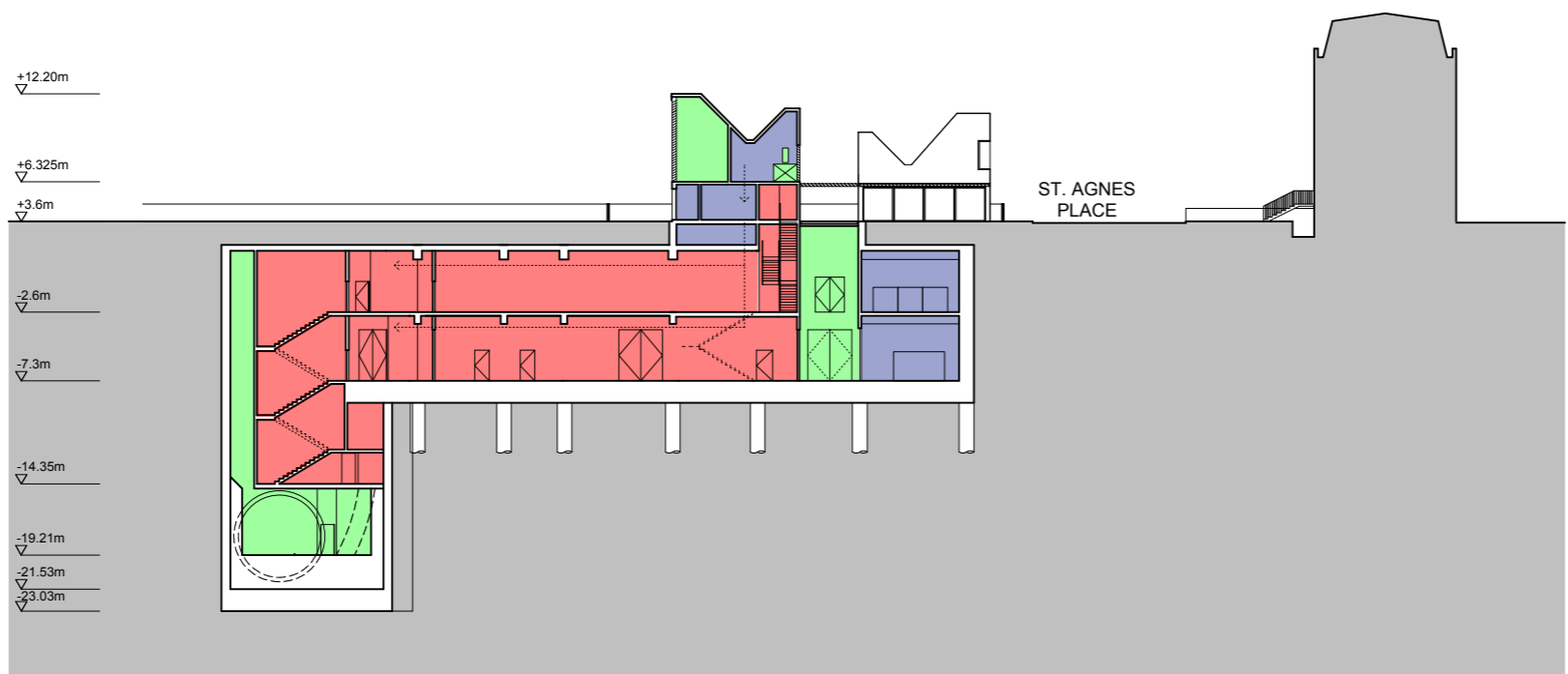
Drawing: **KENNINGTON PARK**
TRACK LEVEL

Suitability: **S4 FORMAL ISSUE TO CLIENT**

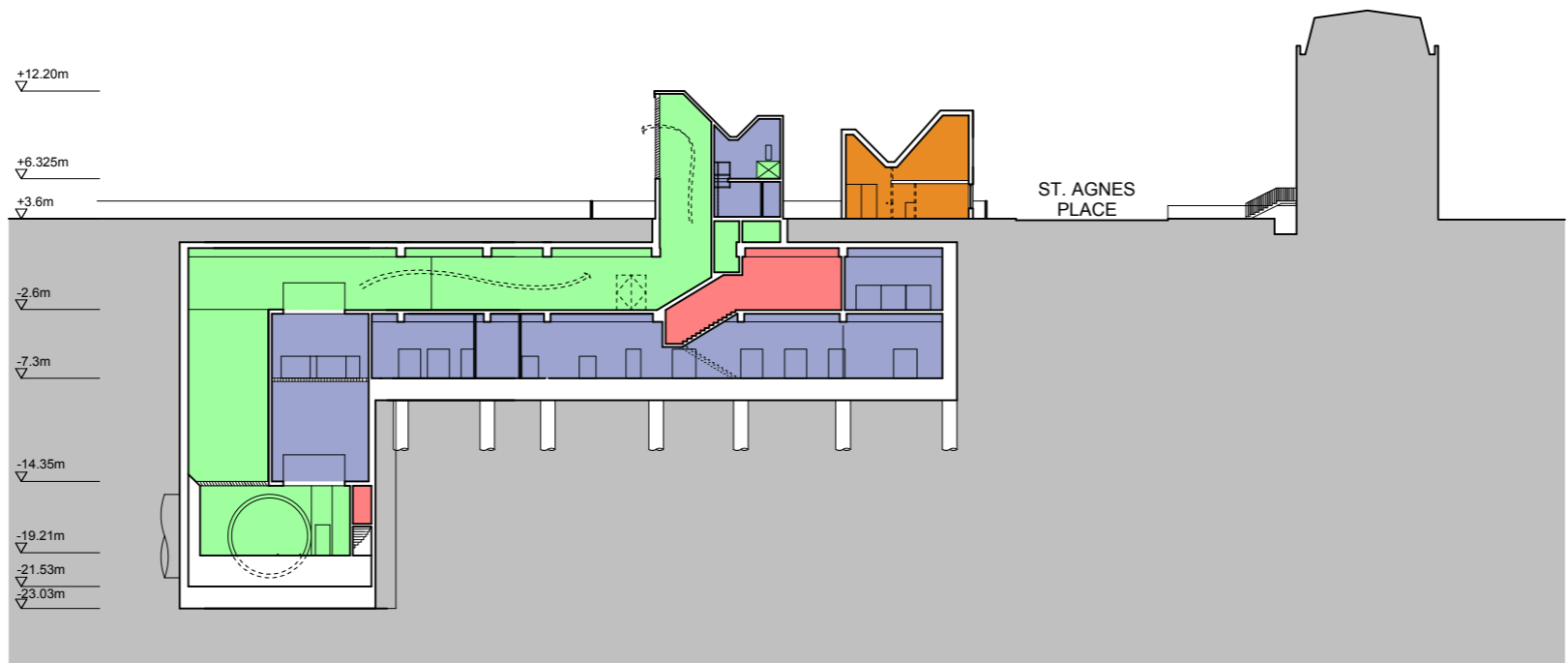
Drawn by: SM	Date: 04/03/13
Checked by: SM	Date: 04/03/13
Approved by: SL	Date: 04/03/13

Drawing No.: GRNLEB-SDA-TU-XX-DR-ARC-43506
Revision: 04

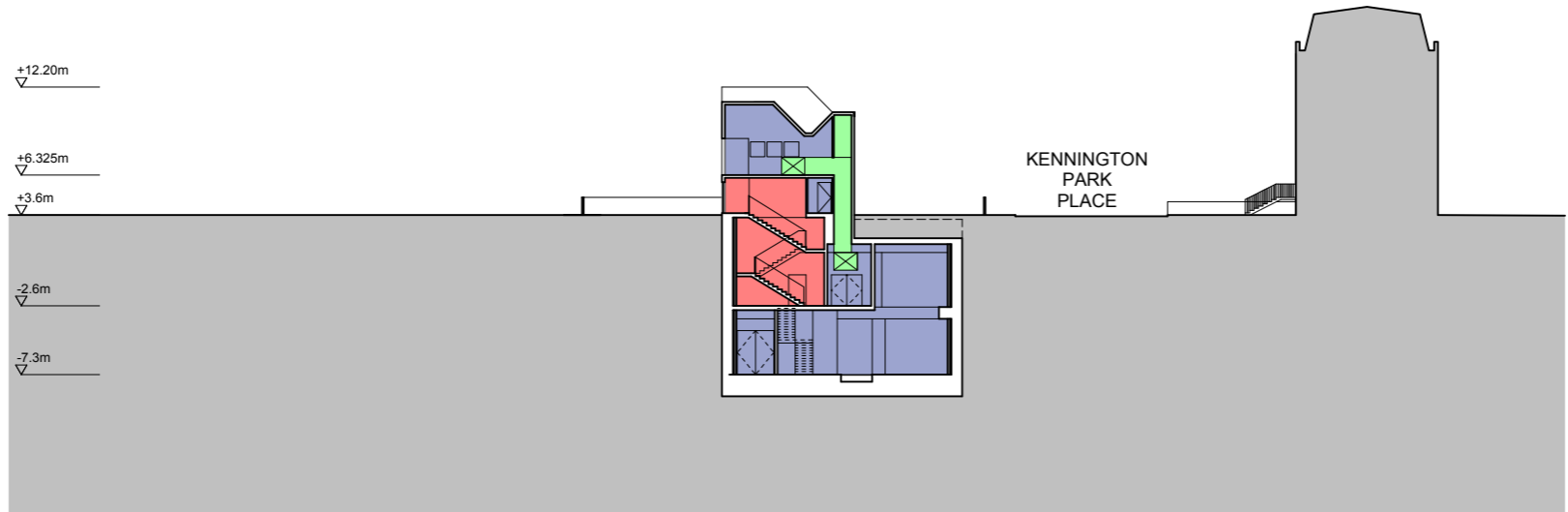
PLANNING DIRECTION DRAWING NUMBER 50



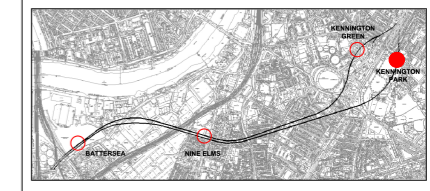
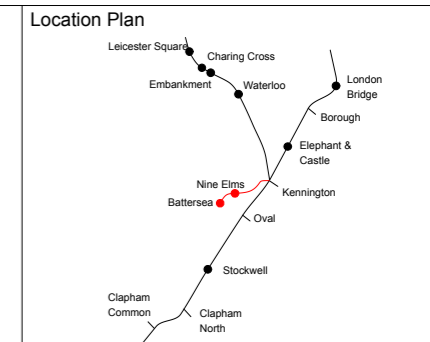
SECTION AA



SECTION BB



SECTION CC



Canopy / Rooflight
Forecourt / Access
Tickethall / Entrance
Paid Concourse
Internal Accommodation
Ducts / Risers
Lift
Emergency Lift (plant replacement)
Escape Route
Community Centre



Internal layouts are illustrative only. Detailed design for above ground elements will be subject to further approvals.

Rev	By	Chkd	Apprvd	Date	Description
05	SM	FM	SL	13/04/13	General Update
04	SM	FM	SL	25/03/13	Formal Issue
03	SM	FM	SL	20/03/13	General Update
02	SM	FM	SL	11/03/13	General Update
01	SM	FM	SL	04/03/13	First Drawn

Client
Transport for London

studiodareARCHITECTS
Buro Happold
Consulting Engineers

Halcrow Group Ltd.
A CH2M HILL COMPANY
Elms House, 43 Brook Green
HammerSmith, London W6 7EF
TEL: 020 3479 8000
FAX: 020 3479 8001
www.halcrow.com



Project:
**NORTHERN LINE EXTENSION
TO BATTERSEA
PLANNING DIRECTION DRAWINGS**

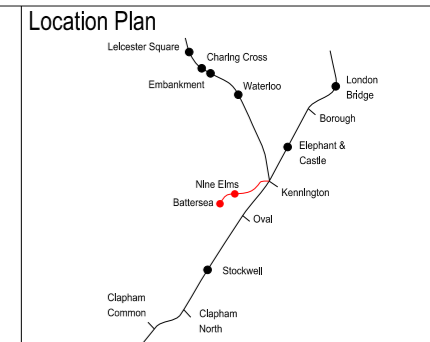
Drawing:
**KENNINGTON PARK
SECTIONS AA, BB, CC**

Suitability:
S4 FORMAL ISSUE TO CLIENT

Drawn by: SM Date: 04/03/13
Checked by: FM Date: 04/03/13
Approved by: SL Date: 04/03/13
Drawing Scale: 1:250 at A1 or 1:500 @ A3

Drawing No.: GRNLEB-SDA-TU-XX-DR-ARC-43507
Revision: 05

PLANNING DIRECTION DRAWING NUMBER 51



0 2 4 6 8 10
 SCALE 1:100 (A1)
 SCALE 1:200 (A3) METRES

This drawing is for approval save for internal layouts which are illustrative only.



SOUTH ELEVATION

Note: Please refer to PDD No. 56 for detail on landscaping

Materials Key

01	London stock brick
02	Protruding headers
03	Metal mesh
04	Pergola screen with climbing plants
05	Metal door
06	Metal frame window
07	Biodiverse sedum roof
08	Lattice Brick

PLANNING DIRECTION DRAWING NUMBER 52

Rev	By	Chkd	App	Date	Description
07	KD	KW	KW	25/03/13	Formal Issue
06	LB	KW	KW	19/03/13	Minor Amendments
05	RR	KW	KW	13/03/13	Minor Amendments
04	RR	KW	KW	11/03/13	Planning Direction Drawing Number Amended
03	RR	KW	KW	07/03/13	Planning Direction Drawing Number Added
02	RR	KW	KW	04/03/13	Engineering Changes and Minor Amendments
01	RR	KW	KW	27/02/13	Engineering Changes

Client
Transport for London

JOHN MCASLAN + PARTNERS
 studiosdareARCHITECTS
 Buro Happold
 Consulting Engineers

Halcrow Group Ltd,
 A CH2M HILL COMPANY
 Elms House, 43 Brook Green
 Hammersmith, London W6 7EF
 TEL: 020 3479 8000
 FAX: 020 3479 8001
 www.halcrow.com

Project:
**NORTHERN LINE EXTENSION
 TO BATTERSEA
 PLANNING DIRECTION DRAWINGS**

Drawing:
**KENNINGTON PARK HEAD HOUSE
 & COMMUNITY CENTRE
 PROPOSED
 SOUTH ELEVATION**

Submittal:
S4 FORMAL ISSUE TO CLIENT

Drawn by: WS Date: 19/02/13
 Checked by: KW Date: 19/02/13
 Approved by: HA Date: 19/02/13
 Drawing Scale: 1:100 @ A1 or 1:200 @ A3

Drawing No.:
1453-KP-F000-E-01 Revision:
07



WEST ELEVATION

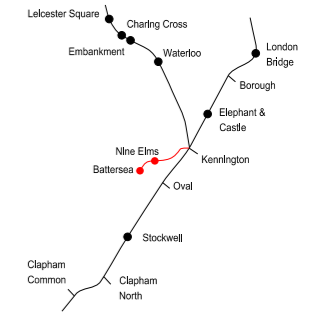
Note: Please refer to PDD No. 56 for detail on landscaping

Materials Key

- 01 London stock brick
- 02 Protruding headers
- 03 Metal mesh
- 04 Pergola screen with climbing plants
- 05 Metal door
- 06 Metal frame window
- 07 Biodiverse sedum roof
- 08 Lattice Brick

PLANNING DIRECTION DRAWING NUMBER 53

Location Plan



SCALE 1:100 (A1)
SCALE 1:200 (A3)

This drawing is for approval save for internal layouts which are illustrative only.

Rev	By	Chkd	App	Date	Description
08	LB	KW	KW	25/03/13	Formal Issue
07	LB	KW	KW	21/03/13	Minor Amendments
06	LB	KW	KW	19/03/13	Minor Amendments
05	RR	KW	KW	13/03/13	Minor Amendments
04	RR	KW	KW	11/03/13	Planning Direction Drawing Number Amended
03	RR	KW	KW	07/03/13	Planning Direction Drawing Number Added
02	RR	KW	KW	04/03/13	Engineering Changes and Minor Amendments
01	RR	KW	KW	27/02/13	Engineering Changes

Client

Transport for London

JOHN MCASLAN + PARTNERS

studiodareARCHITECTS



Halcrow Group Ltd.
A CH2M HILL COMPANY
Elms House, 43 Brook Green
Hammersmith, London W6 7EF
TEL: 020 3479 8000
FAX: 020 3479 8001
www.halcrow.com



Project:

NORTHERN LINE EXTENSION
TO BATTERSEA
PLANNING DIRECTION DRAWINGS

Drawing:

KENNINGTON PARK HEAD HOUSE
& COMMUNITY CENTRE
PROPOSED
WEST ELEVATION

Submittal:

S4 FORMAL ISSUE TO CLIENT

Drawn by: WS Date: 19/02/13

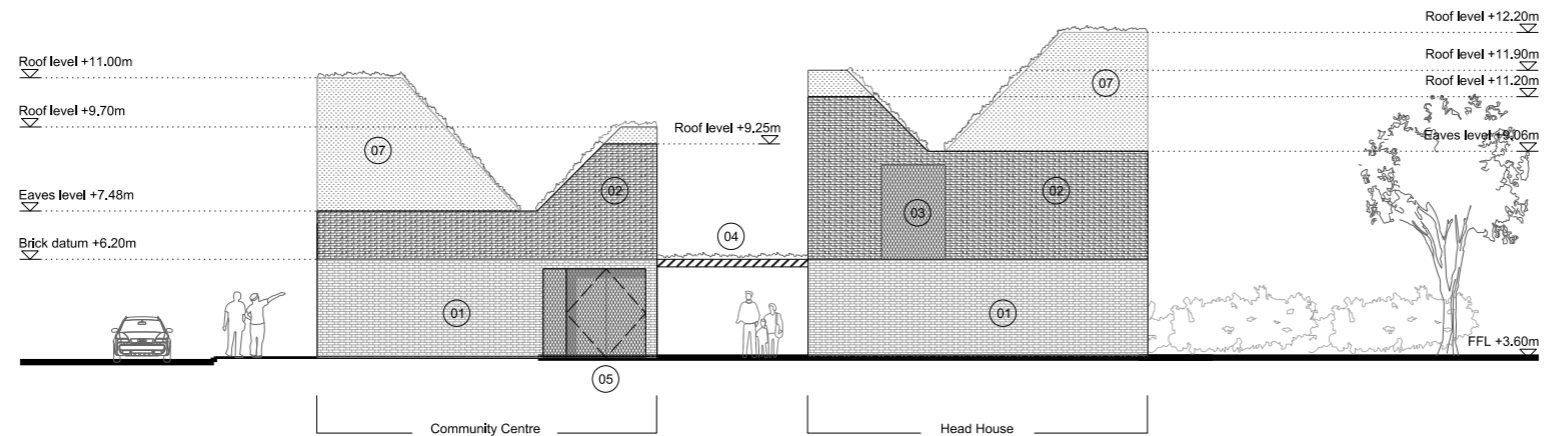
Checked by: KW Date: 19/02/13

Approved by: HA Date: 19/02/13

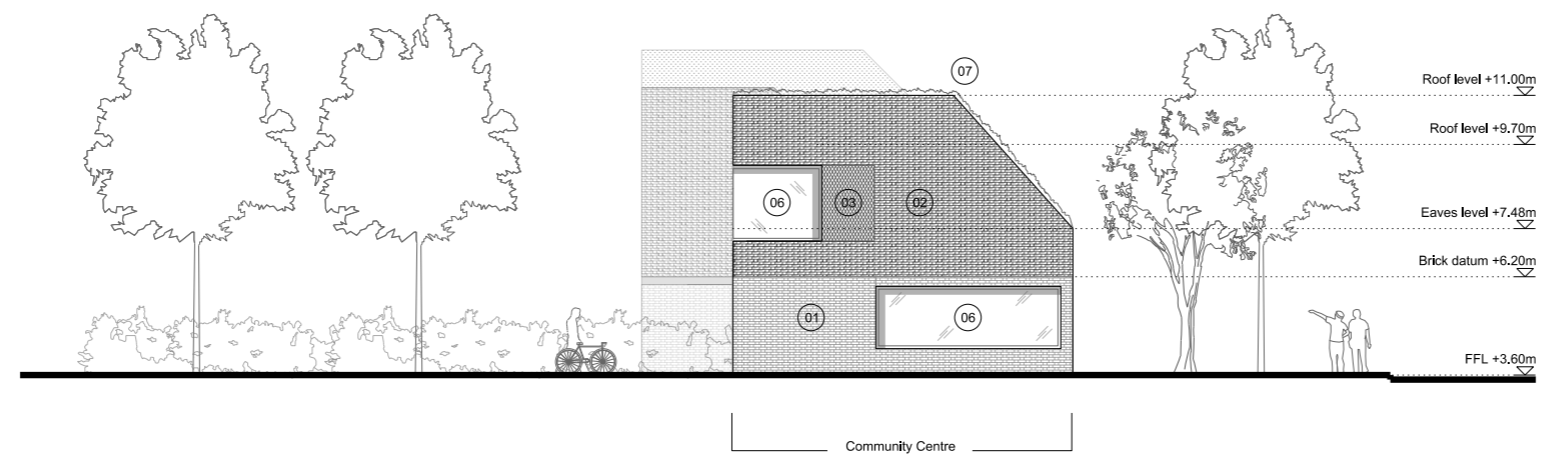
Drawing Scale: 1:100 @ A1 or 1:200 @ A3

Drawing No.:
1453-KP-F000-E-02

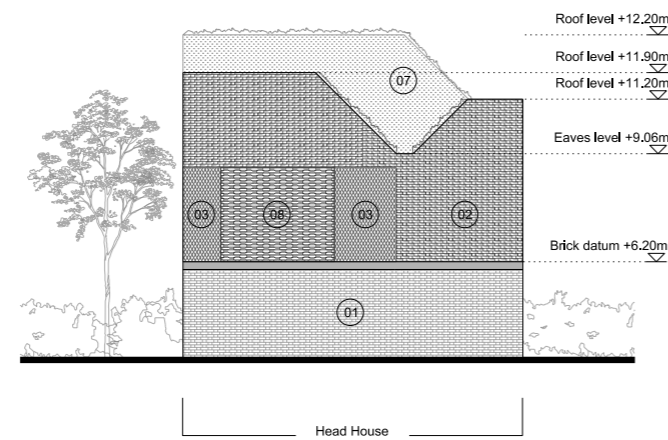
Revision:
08



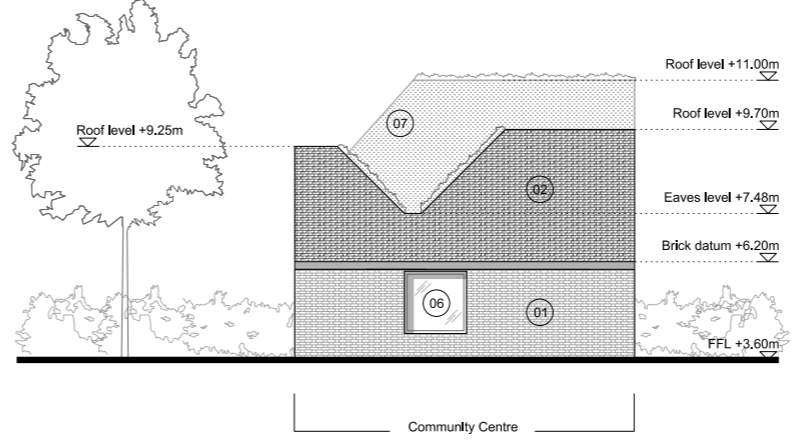
NORTH ELEVATION



EAST ELEVATION



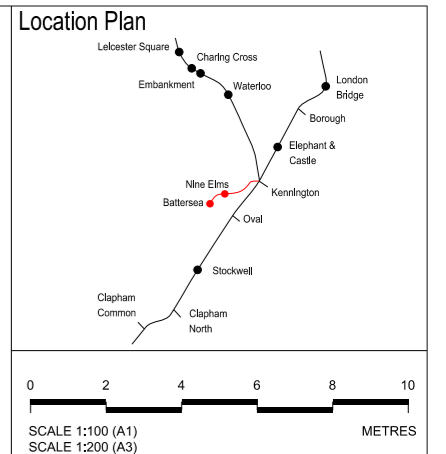
HEAD HOUSE EAST ELEVATION



COMMUNITY CENTRE WEST ELEVATION

- Materials Key**
- 01 London stock brick
 - 02 Protruding headers
 - 03 Metal mesh
 - 04 Pergola screen with climbing plants
 - 05 Metal door
 - 06 Metal frame window
 - 07 Biodiverse sedum roof
 - 08 Lattice Brick

Note: Please refer to PDD No. 56 for detail on landscaping



This drawing is for approval save for internal layouts which are illustrative only.

Rev	By	Chkd	App	Date	Description
07	KD	KW	KW	25/03/13	Formal Issue
06	LB	KW	KW	19/03/13	Minor Amendments
05	RR	KW	KW	13/03/13	Minor Amendments
04	RR	KW	KW	11/03/13	Planning Direction Drawing Number Amended
03	RR	KW	KW	07/03/13	Planning Direction Drawing Number Added
02	RR	KW	KW	04/03/13	Engineering Changes and Minor Amendments
01	RR	KW	KW	27/02/13	Engineering Changes

Client
Transport for London

JOHN MCASLAN + PARTNERS
studiodareARCHITECTS
Buro Happold
Consulting Engineers

Halcrow Group Ltd.
A CH2M HILL COMPANY
Elms House, 43 Brook Green
Hammersmith, London W6 7EP
TEL: 020 3479 8000
FAX: 020 3479 8001
www.halcrow.com

Project:
**NORTHERN LINE EXTENSION
TO BATTERSEA
PLANNING DIRECTION DRAWINGS**

Drawing:
**KENNINGTON PARK HEAD HOUSE
& COMMUNITY CENTRE
PROPOSED ELEVATIONS**

Submittal:
S4 FORMAL ISSUE TO CLIENT

Drawn by: WS Date: 19/02/13
Checked by: KW Date: 19/02/13
Approved by: HA Date: 19/02/13
Drawing Scale: 1:100 @ A1 or 1:200 @ A3

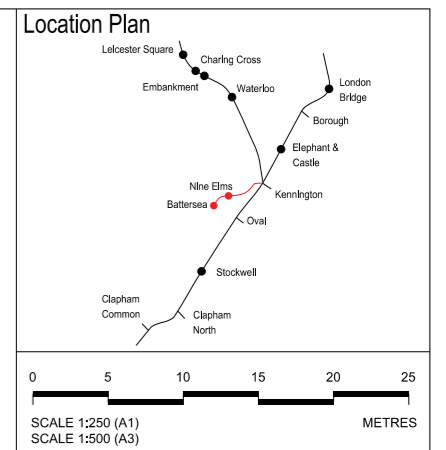
Drawing No.:
1453-KP-F000-E-03

Revision:
07

PLANNING DIRECTION DRAWING NUMBER 54



- Key**
1. Outline of underground structure (in black dotted line)
 2. Head house with sedum roof
 3. Community building with sedum roof
 4. New structure tree
 5. New orchard and flowering trees
 6. Existing evergreen oak trees (topographical survey required for identifying exact locations)
 7. Existing park trees (topographical survey required for identifying exact locations)
 8. Maintenance access to head house
 9. Access to community building
 10. Outdoor garden / apiary
 11. Outdoor learning area
 12. Access from Kennington Park
 13. Dog walking area
 14. Meadow grass / wildflower
 15. Vegetable garden
 16. Retained existing light column (topographical survey required for identifying exact locations)
 17. Shrub planting



This drawing is illustrative only.



Rev	By	Chkd	App	Date	Description
11	YT	KW	HA	02/04/13	Formal issue to client, minor amendments
10	YT	KW	HA	27/03/13	Formal issue to client
09	YT	KW	HA	25/03/13	Formal issue
08	YT	KW	HA	21/03/13	Minor Amendments
07	YT	KW	HA	18/03/13	Minor Amendments
06	YT	KW	HA	13/03/13	Minor Amendments
05	YT	KW	HA	11/03/13	Planning direction drawing number amended, minor changes
04	YT	KW	HA	07/03/13	Planning direction drawing number added
03	YT	KW	HA	04/03/13	Engineering changes and minor amendments
02	YT	KW	HA	27/02/13	Draft
01	YT	KW	HA	21/02/13	Draft
00	YT	KW	HA	19/02/13	Draft

Client
Transport for London

JOHN MCASLAN + PARTNERS
 studiodareARCHITECTS
 Buro Happold
 Consulting Engineers

Halcrow Group Ltd.
 A CH2M HILL COMPANY
 Elma House, 43 Brook Green
 Hammersmith, London W6 7EF
 TEL: 020 3479 8000
 FAX: 020 3479 8001
 www.halcrow.com



Project:
**NORTHERN LINE EXTENSION TO BATTERSEA
 PLANNING DIRECTION DRAWINGS**

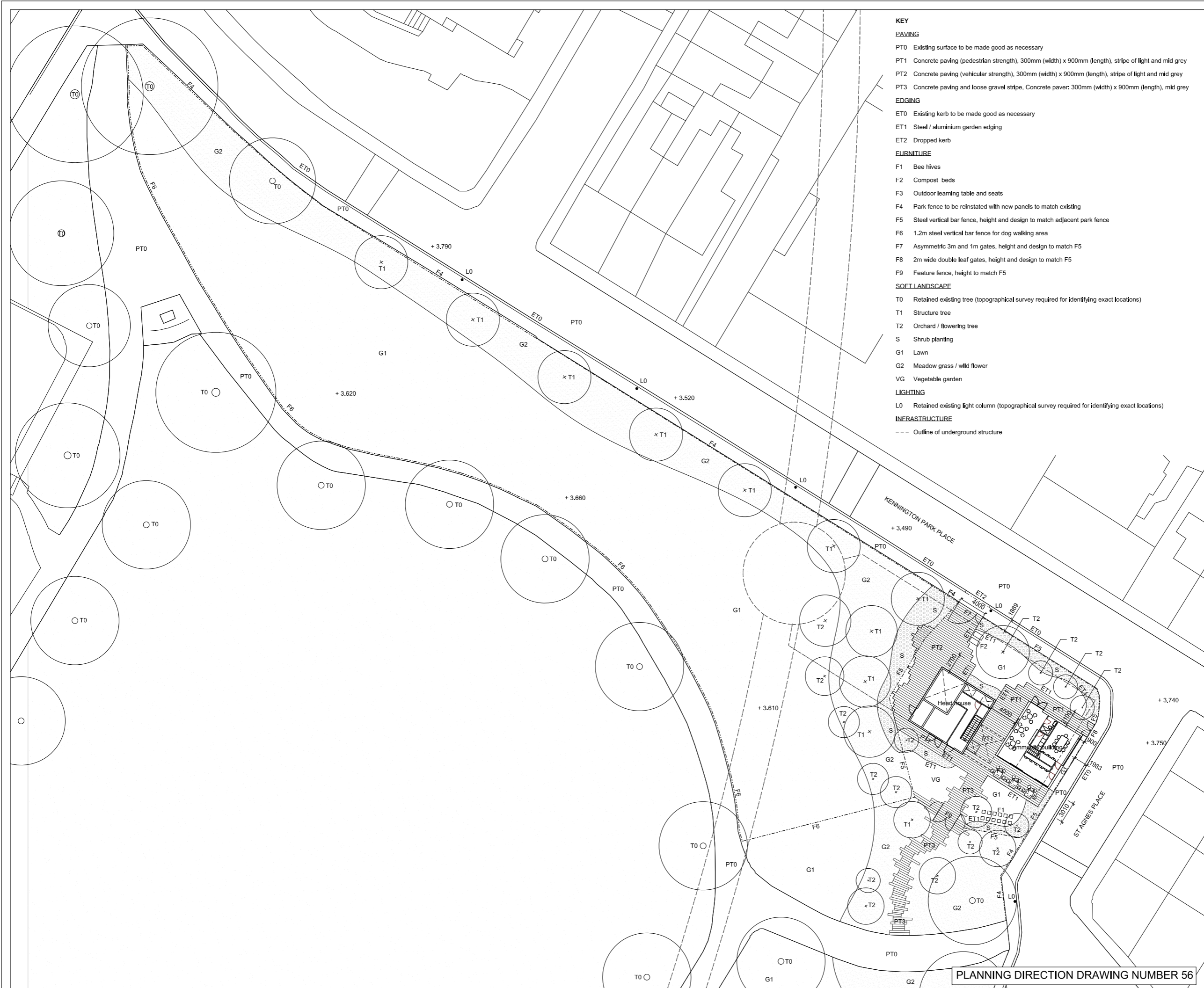
Drawing:
**KENNINGTON PARK HEAD HOUSE & COMMUNITY CENTRE PROPOSED
 LANDSCAPE MASTERPLAN**

Submittal:
S4 FORMAL ISSUE TO CLIENT

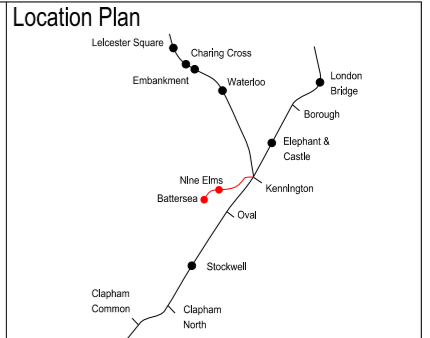
Drawn by: WS Date: 19/02/13
 Checked by: KW Date: 19/02/13
 Approved by: HA Date: 19/02/13
 Drawing Scale: 1:250 @ A1 or 1:500 @ A3

Drawing No.: 1453-KP-G710-P-00
 Revision: 11

PLANNING DIRECTION DRAWING NUMBER 55



- KEY**
- PAVING**
- PT0 Existing surface to be made good as necessary
 - PT1 Concrete paving (pedestrian strength), 300mm (width) x 900mm (length), stripe of light and mid grey
 - PT2 Concrete paving (vehicular strength), 300mm (width) x 900mm (length), stripe of light and mid grey
 - PT3 Concrete paving and loose gravel stripe, Concrete paver: 300mm (width) x 900mm (length), mid grey
- EDGING**
- ET0 Existing kerb to be made good as necessary
 - ET1 Steel / aluminium garden edging
 - ET2 Dropped kerb
- FURNITURE**
- F1 Bee hives
 - F2 Compost beds
 - F3 Outdoor learning table and seats
 - F4 Park fence to be reinstated with new panels to match existing
 - F5 Steel vertical bar fence, height and design to match adjacent park fence
 - F6 1.2m steel vertical bar fence for dog walking area
 - F7 Asymmetric 3m and 1m gates, height and design to match F5
 - F8 2m wide double leaf gates, height and design to match F5
 - F9 Feature fence, height to match F5
- SOFT LANDSCAPE**
- T0 Retained existing tree (topographical survey required for identifying exact locations)
 - T1 Structure tree
 - T2 Orchard / flowering tree
 - S Shrub planting
 - G1 Lawn
 - G2 Meadow grass / wild flower
 - VG Vegetable garden
- LIGHTING**
- L0 Retained existing light column (topographical survey required for identifying exact locations)
- INFRASTRUCTURE**
- Outline of underground structure



0 5 10 15 20 25 METRES

SCALE 1:250 (A1)
SCALE 1:500 (A3)

This drawing is illustrative only.

Rev	By	Chkd	App	Date	Description
10	YT	KW	HA	02/04/13	Formal issue to client, minor amendments
09	YT	KW	HA	27/03/13	Formal issue to client
08	YT	KW	HA	25/03/13	Formal issue
07	YT	KW	HA	18/03/13	Minor changes
06	YT	KW	HA	13/03/13	Minor changes
05	YT	KW	HA	11/03/13	Planning direction drawing number amended, minor changes
04	YT	KW	HA	07/03/13	Planning direction drawing number added
03	YT	KW	HA	04/03/13	Engineering changes and minor amendments
02	YT	KW	HA	27/02/13	Draft
01	YT	KW	HA	21/02/13	Draft
00	YT	KW	HA	19/02/13	Draft

Client

Transport for London

JOHN MCASLAN + PARTNERS

studiodareARCHITECTS

Buro Happold Consulting Engineers

Halcrow Group Ltd,
A CH2M HILL COMPANY
Elms House, 43 Brook Green
Hammersmith, London W6 7EP
TEL: 020 3479 8000
FAX: 020 3479 8001
www.halcrow.com

Project:

**NORTHERN LINE EXTENSION
TO BATTERSEA
PLANNING DIRECTION DRAWINGS**

Drawing:

**KENNINGTON PARK HEAD HOUSE
& COMMUNITY CENTRE PROPOSED
PUBLIC REALM
GENERAL ARRANGEMENT PLAN**

Submittal by:

S4 FORMAL ISSUE TO CLIENT

Drawn by: WS Date: 19/02/13
Checked by: KW Date: 19/02/13
Approved by: HA Date: 19/02/13
Drawing Scale: 1:250 @ A1 or 1:500 @ A3

Drawing No: 1453-KP-G710-P-01 RevB/cor: 10

PLANNING DIRECTION DRAWING NUMBER 56