

# Northern Line Extension

## Battersea Site

### Community Liaison Group

28.06.16

Delivering the Northern line extension with



MAYOR OF LONDON



# Battersea Update April – June 2016



FERROVIAL AGROMAN  
LAING O'ROURKE JV

## ✓ Crossover Box

- Temporary works: complete
- D-walls: complete
- Internal piles: complete
- Excavation in progress
- Capping beam in progress



## ✓ Marine works

- Obstruction removal
- 90,000T spoil (5,000 lorries)
- 100 barges
- CO2 Emissions Savings: 130T
- Loading output: 550t/hr
- Maximum per day: 2,000t



## ✓ Main Station Box

- Temporary works: complete
- D-Walls on going
- Piling in mid July





FLO Camera 2 11th June 2016.mov

# Monitoring April – June 2016

## Environmental Monitoring

Noise : 3 unattended continuous noise monitors

Dust : 2 unattended continuous dust monitors

6 dust slide locations

## Monitoring Results Summary

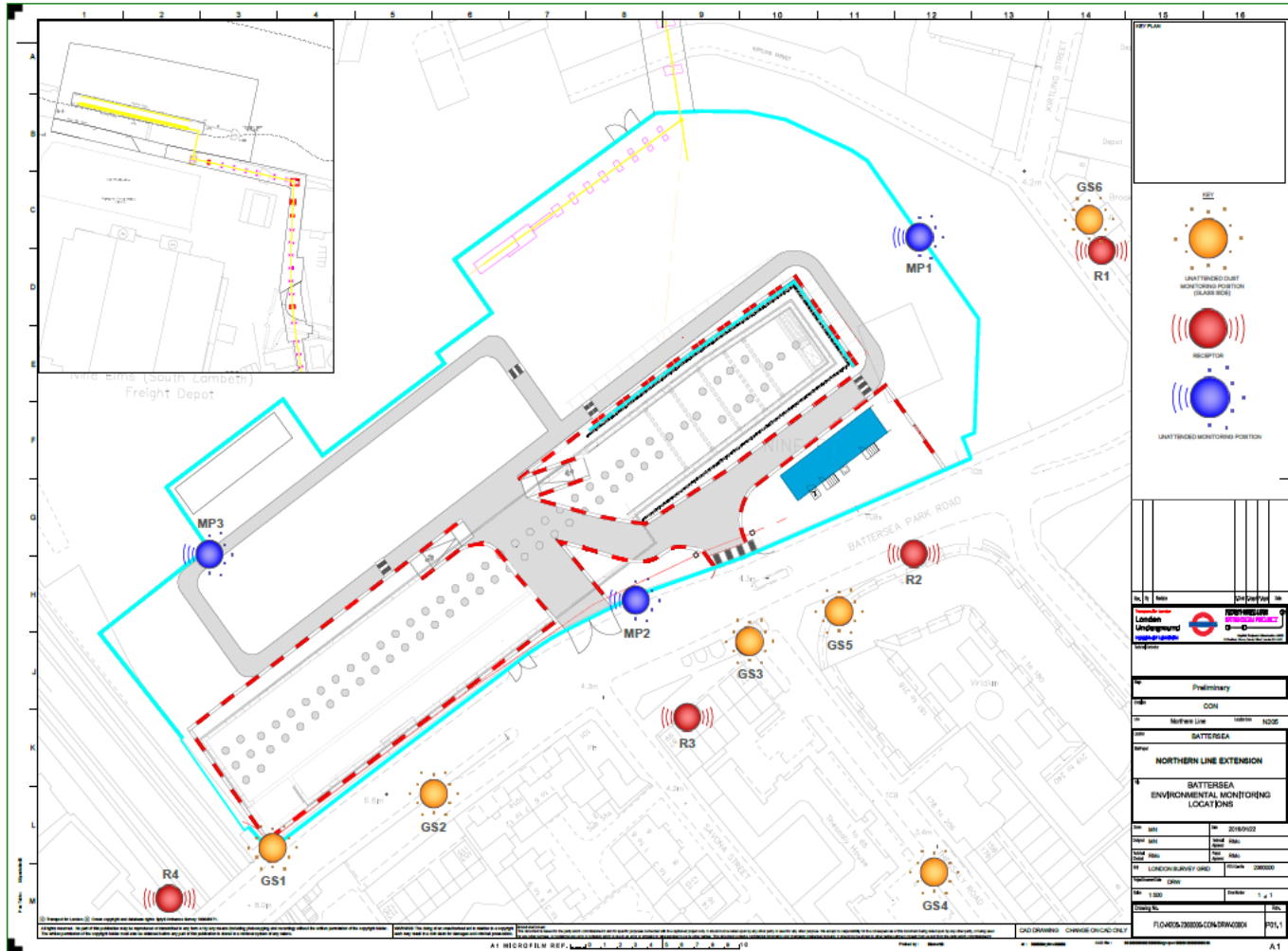
- 2 noise exceedances at MP1 (offsite)
- 9 dust triggers (at MP1)
- 1 dust slides exceedance – (25/04/16 – 09/05/16) GS2 located at the Viridian Apartments. Likely to be due to road traffic



# Monitoring Locations Battersea



FERROVIAL AGROMAN  
LAING O'ROURKE JV



# Summary Update July – Sept 2016

## Battersea Crossover Box

- Continue excavation down to foundation slab
- Reinforced concrete construction at B2 level
- Installation of temporary steel propping

## Battersea Station Box

- Continue diaphragm wall and bored pile construction
- Commence capping beam construction





# Summary Update July – Sept 2016



FERROVIAL AGROMAN  
LAING O'ROURKE JV





# Summary Update July – Sept 2016





# Summary Update July – Sept 2016



Battersea Station.wmv

# Traffic Management / Logistics

Thames Water are starting condition checks work at Kirtling street on Wednesday 29<sup>th</sup> June for approx. 5weeks, Kirtling St will be closed for this period, this is on behalf of the NLE FLO project.

National Grid Gas will be starting minor works at the junction of Thessaly St / Savona St and Battersea P Road for approx 2weeks, although we do not have a start date (ideally 1<sup>st</sup> July 16) until approval is given by TfL & Wandsworth Council. This is also works on behalf of the NLE FLo project.



# Your Feedback



FERROVIAL AGROMAN  
LANC O'BURKE JV

You Suggested	We Did
Opportunities for local organisations	NLE hosted an event on 25 Feb for a group of unemployed young people. "Talent Match" career opportunities
More information to residents	Weekly email bulleting is now delivered every Friday
Light Pollution	NLE redirected the lights on the hoardings and site lighting is under review.
Integrated meetings with major developments in the area	NLE and Tideway are joining their CLG meetings. BPSDC on same date every 6 months
Keep Roads Clean	Road sweepers are working permanently Battersea Park Road Wheel washer being organised
Engagement with Local Schools	Visit to Griffin Primary School last 21 Feb. Follow up visits to be
Suggested that some advanced warning signs would be of great help in forewarning road users of the new signals at our site entrance	Temporary signs have been installed and we have requested additional safety measures be installed. Keep Clear road markings to road surface in the westbound carriageways/ "No U turn" signs in between the new traffic light posts/ Temporary vehicle marshal positive intervention for pedestrians, until mitigation is completed. There are signs for cyclists also.



# Engagement Opportunities

- CLG meetings
- One to one meetings
- Drop in sessions
- School and Youth Engagement
- Stakeholder Activities
- LEAP group meetings
- Cycling safety Events





# Ways to contact us

- It is important that calls are logged through the NLE 24/7 helpdesk on 0343 222 2424 Option 1
- Email [nle@tfl.gov.uk](mailto:nle@tfl.gov.uk)
- Regular Drop In sessions
- Please visit:

<https://tfl.gov.uk/northern-line-extension>