

# Northern Line Extension

## Nine Elms and Oval

### Community Liaison Group

#### 17.10.16

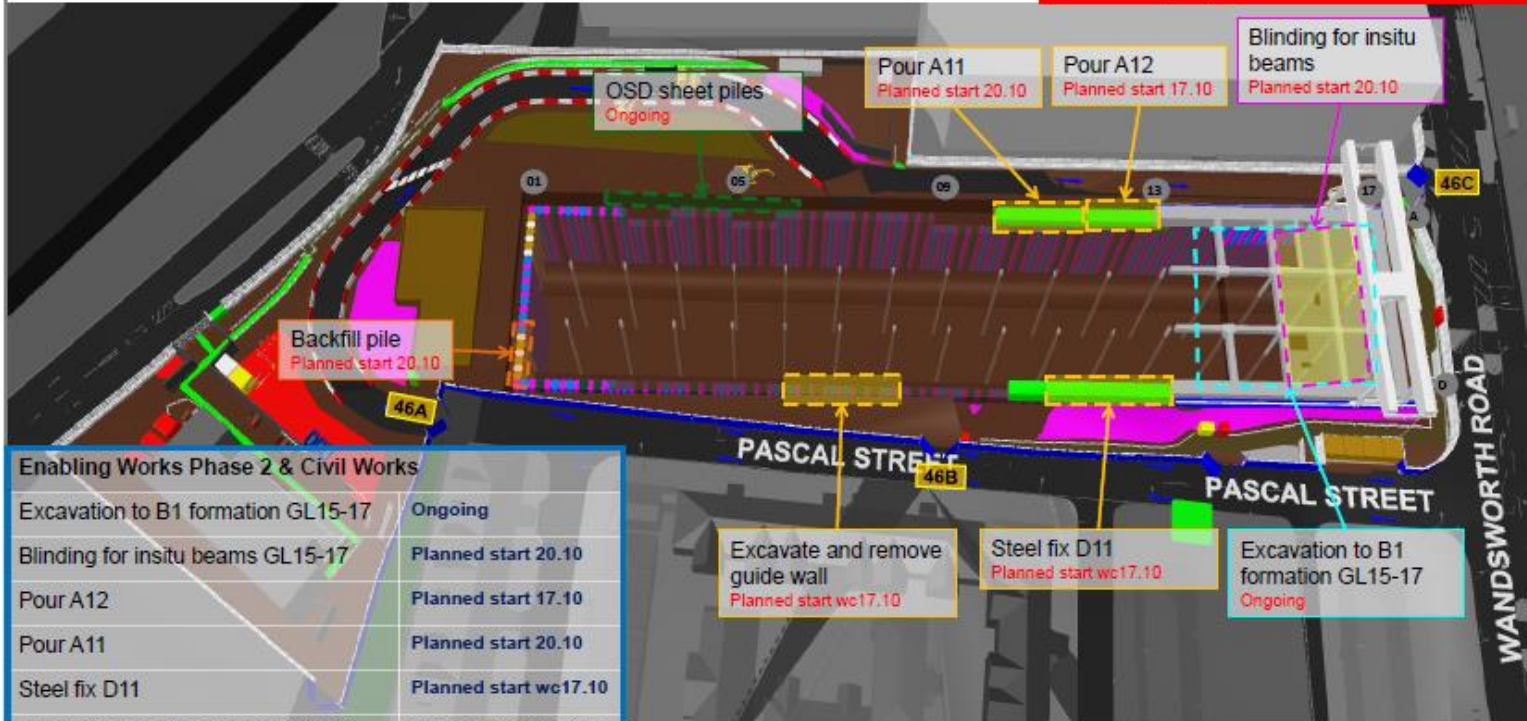
Delivering the Northern line extension with

# NLE Nine Elms Site Map Overview



## Nine Elms – Weekly Look Ahead plan w/c 17/10/16

**PLANNED WORKS (p8w1)**  
 Complete headwall works  
 Backfill headwall pile and demob rig  
 Select – Lighting works on insitu slab



Enabling Works Phase 2 & Civil Works	
Excavation to B1 formation GL15-17	Ongoing
Blinding for insitu beams GL15-17	Planned start 20.10
Pour A12	Planned start 17.10
Pour A11	Planned start 20.10
Steel fix D11	Planned start wc17.10
Excavate and pile cropping GL8-6	Planned start wc17.10
OSD sheet piles	Ongoing
Demob sheet piling team	Planned start 21.10



# Summary Update July - Oct 2016



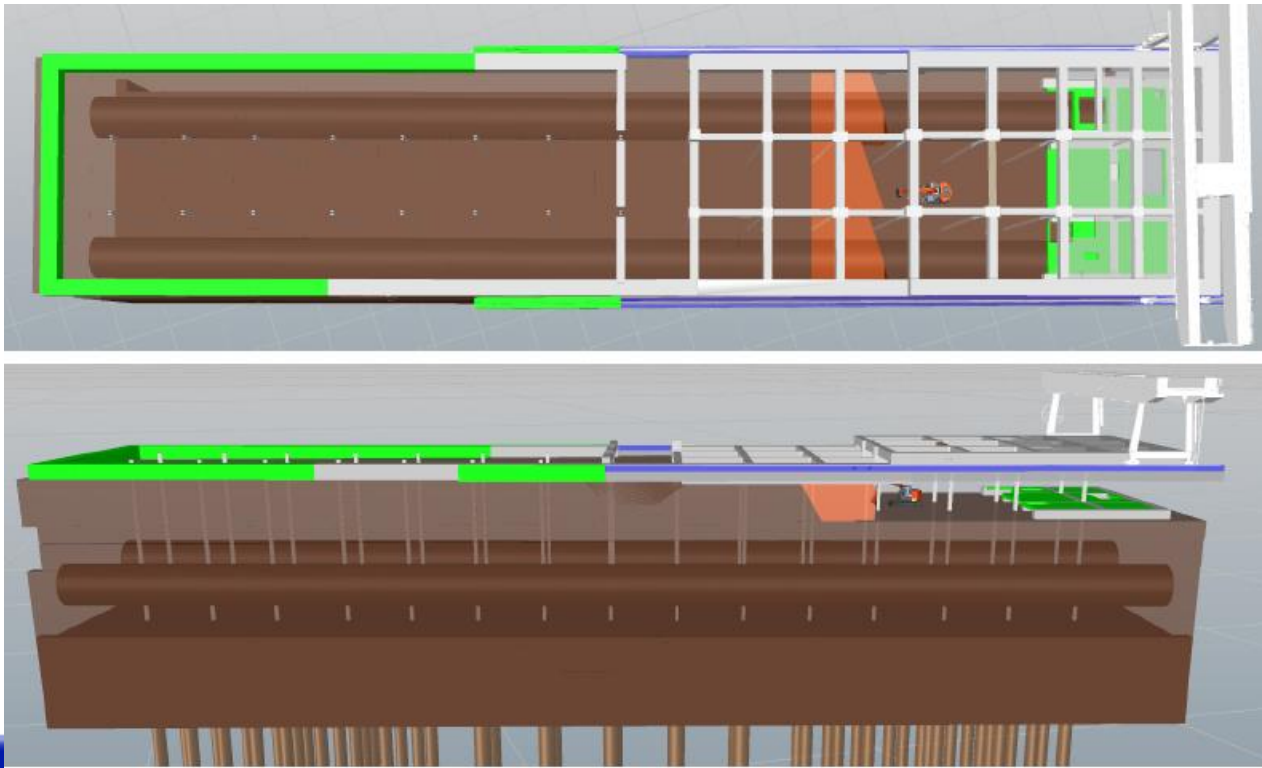
FERROVIAL AGROMAN  
LAING O'ROURKE JV

- Piling works completed
- Precast beams installed at ground level, including in-situ stitches (links between the beams and the columns)
- Concrete slab cast at ground level
- Excavation commenced to Basement 1 level
- Section of capping beam constructed (beam connecting tops of the piles)



# Nine Elms Update Oct – Jan 2017

- Practical completion of the capping beam
- Continue with excavation works to Basement 1 level
- Install more precast beams and construct the in-situ stitch to the columns
- Commence construction of waling beam at Basement 1 level and in-situ beams
- Gantry crane foundation will be extended towards the West

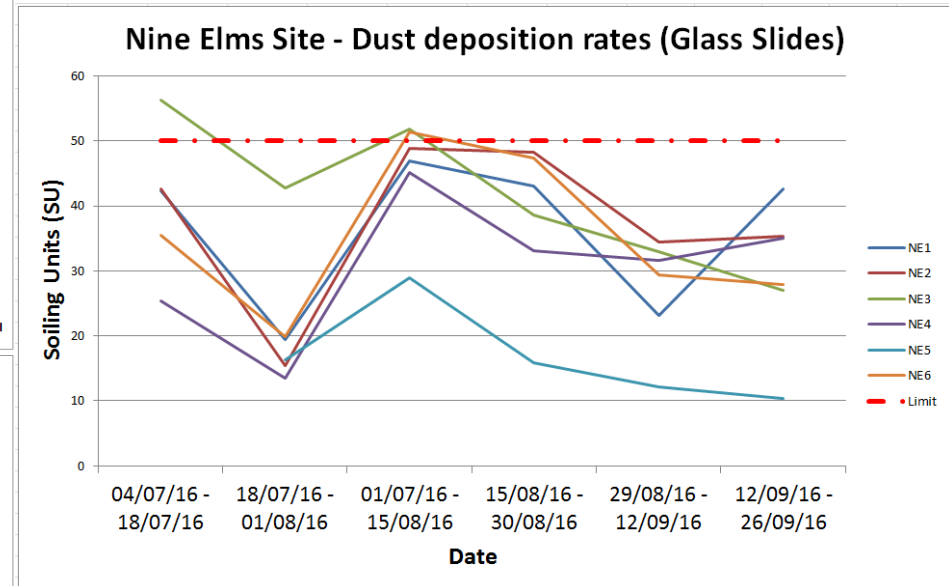
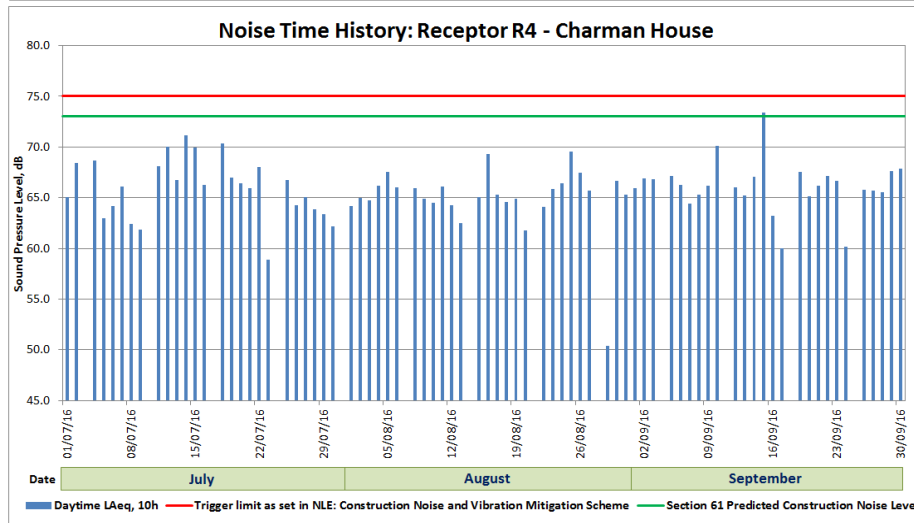
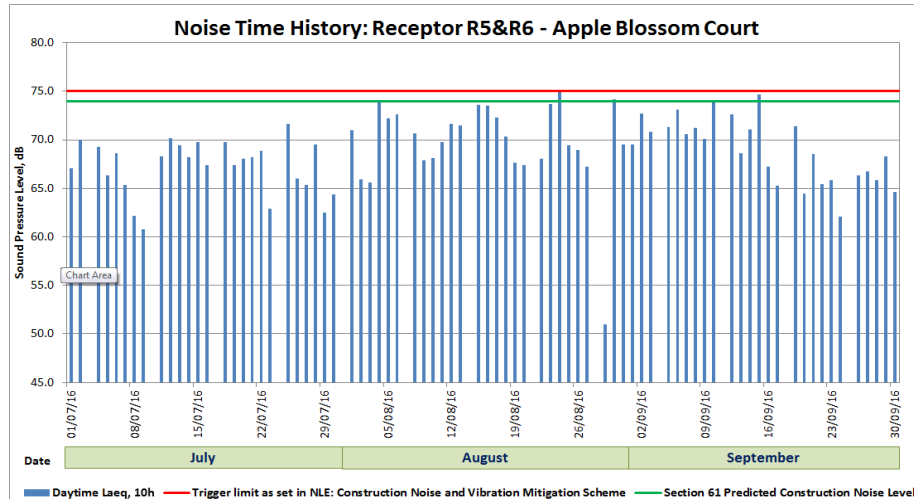


# Monitoring Jul – Oct 2016

## Environmental Monitoring



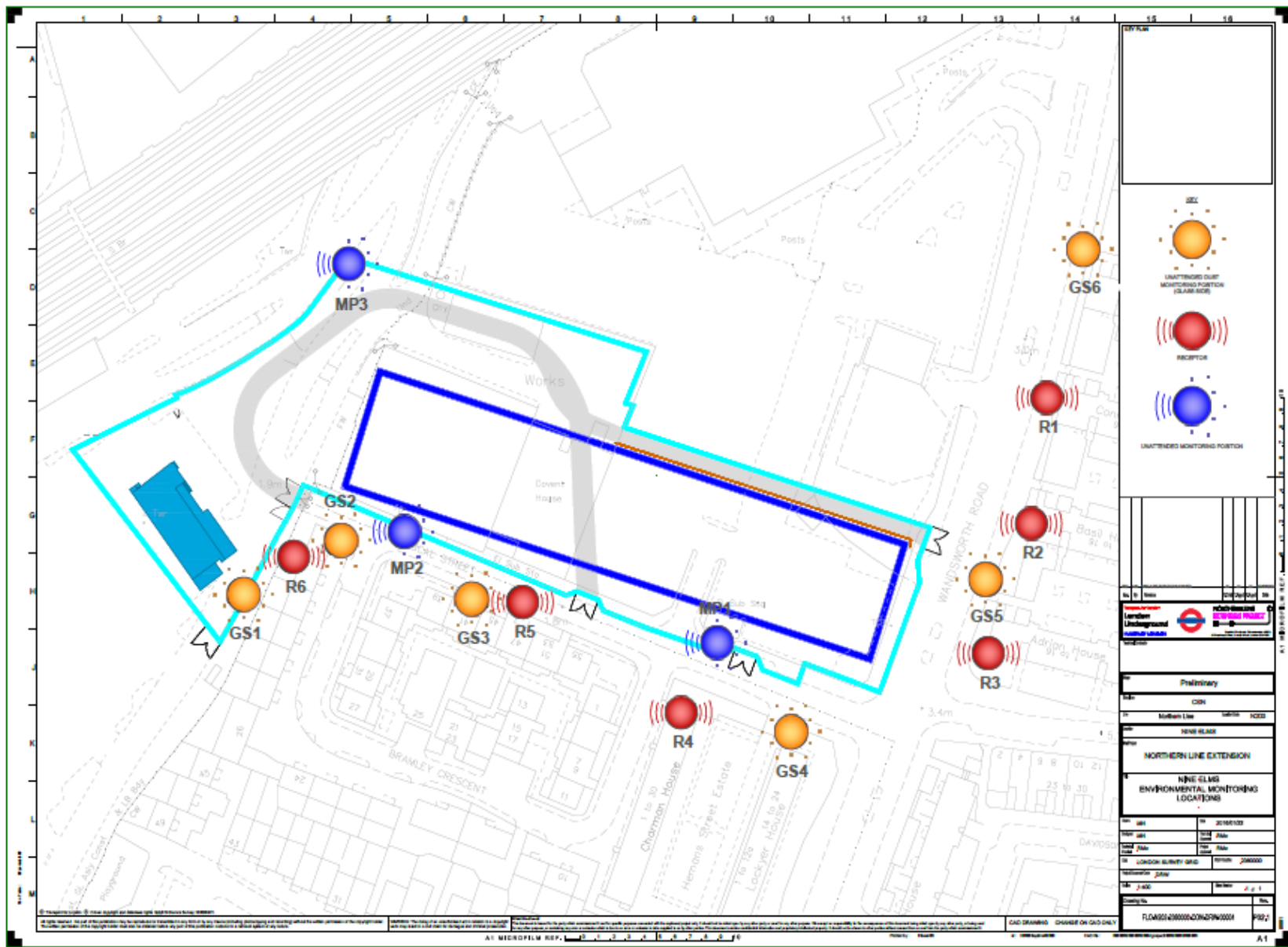
FERROVIAL AGROMAN  
LAING O'ROURKE JV



Glass slide number 3 exceeded twice during the monitoring period. It is located in front of 55 Bramley Crescent and it is mainly influenced by lorry movement exiting the site.

Glass slide number 6 exceeded once. It is located far away of the Nine Ems site and it is mainly influenced by road traffic and other construction sites e.g. Barrats building.





# NLE Environment and Sustainability



FERROVIAL AGROMAN  
LAING O'ROURKE JV

Nine Elms Station

Environmental Benefits of River Transport – Period 7



**1 BARGE = 50 WAGONS**



Excavated material from Nine Elms Station is being sent to the **NLE Waste Transfer Station** and then to Goshems Farm by barge to restore this former landfill site to high grade arable farm land. NLE have taken wagons off the streets of London, reducing local contaminants in the air.

**TOTAL MUCK AWAY** **43,850** TONNES OF SPOIL

**WAGON JOURNEYS AVOIDED** **4,870** WAGONS OFF THE STREETS

**TOTAL BARGES** **44** BARGES

**EMISSIONS SAVINGS** **62** Tonnes of **CO2**



# NLE Environment and Sustainability



FERROVIAL AGROMAN  
LAING O'ROURKE JV

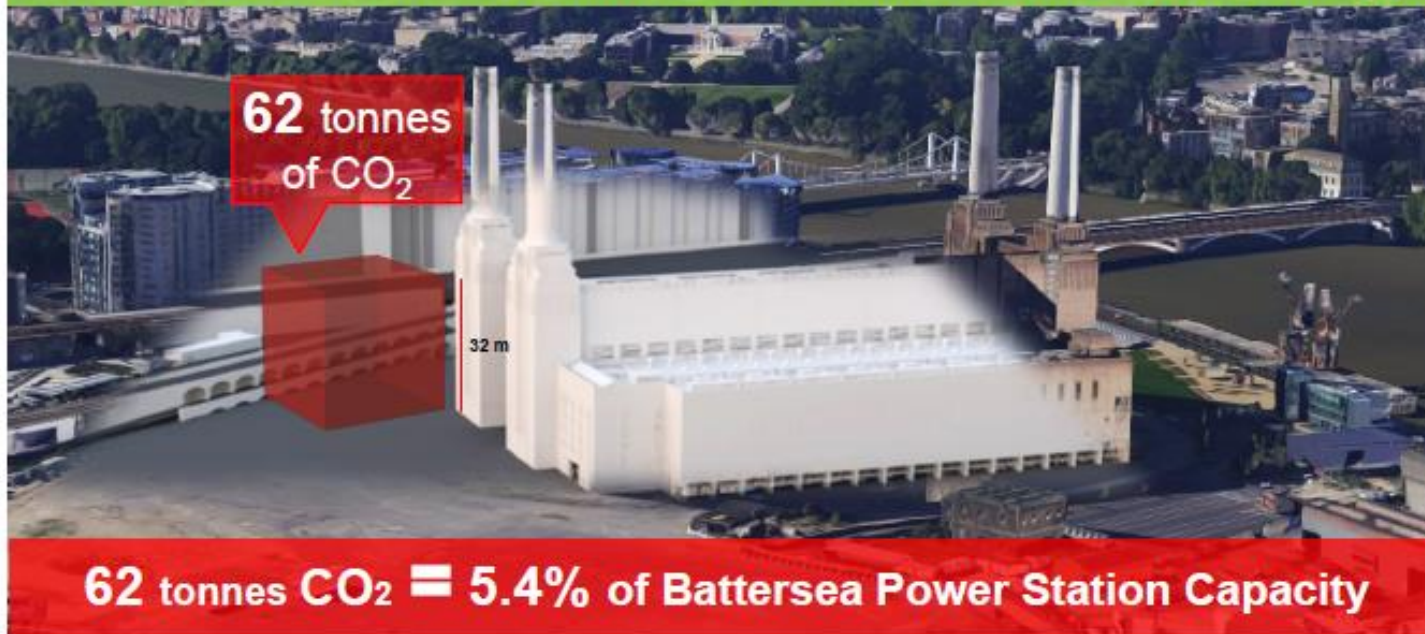
## Nine Elms Station

### Environment – CO<sub>2</sub> Savings up to Period 7



Nine Elms Site has contributed with 17% of the Total CO<sub>2</sub> Savings achieved by the NLE by using River Transport

This is the volume that 62 tonnes of Carbon Dioxide would occupy.





# NLE Environment and Sustainability

## Indirect Benefits



## Safer Roads in London

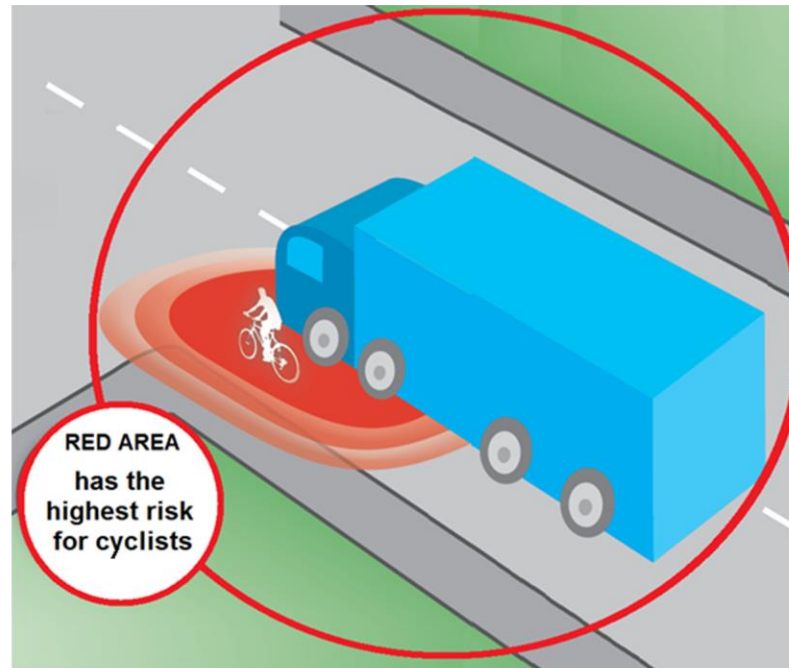
Large lorries are involved in half of the cyclist deaths in London

The Northern  
Line Extension

has **avoided**  
**11,250 wagons** in  
the streets



**270,000 left turns**  
during the wagon  
journeys



# Your Feedback



FERROVIAL AGROMAN  
LANC O'BURKE JV

You Suggested	We Did
Opportunities for local organisations	NLE hosted a meet the buyer event in June with over 30 local business in the area.
More information to residents	Weekly email bulleting is now delivered every Friday
Light Pollution	NLE redirected the lights on the hoardings and site lighting is under review.
Integrated meetings with major developments in the area	NLE and Tideway are joining their CLG meetings. BPSDC on same date every 6 months
Keep Roads Clean	Road sweepers are working permanently Battersea Park Road Wheel washer being organised
Engagement with Local Schools	We continue to get work experience students from the three Boroughs and we have completed 266 days of summer placements
Request from a resident to start noisy work later on Saturdays.	The site team accommodated the most noisy activity to start later on Saturday. Also the road sweeper was instructed to start after 9 am on Saturday.
Petition to assist with the cleaning of the Silver Birch close top Battersea site	FLO got together with Tideway and commissioned an specialist company to clean the both Bridges.



# Engagement Opportunities

- CLG meetings
- One to one meetings
- Drop in sessions
- School and Youth Engagement
- Stakeholder Activities
- LEAP group meetings
- Cycling safety Events

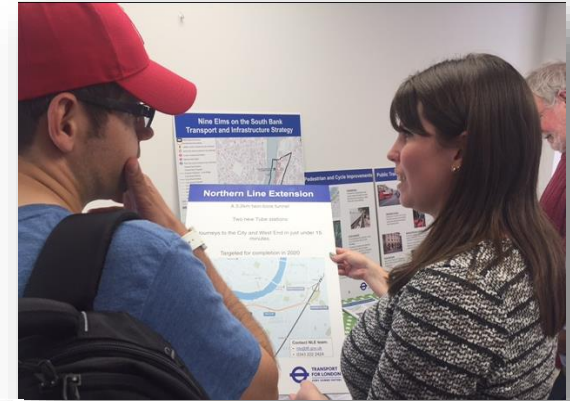


## FLO cleans out the dirt

Major facelift to Network Rail bridges as part of a community initiative in Wandsworth



Nine Elms Communications Manager, Henry Ellis (centre) pictured with FLO's Ignacio Lopez, Carla Arnold and Claudia Quitian.



# Ways to contact us

- It is important that calls are logged through the NLE 24/7 helpdesk on 0343 222 2424 Option 1
- Email [nle@tfl.gov.uk](mailto:nle@tfl.gov.uk)
- Regular Drop In sessions
- Please visit:

<https://tfl.gov.uk/northern-line-extension>