

Northern Line Extension

BI-MONTHLY UPDATE

November-December 2017

Kennington Park

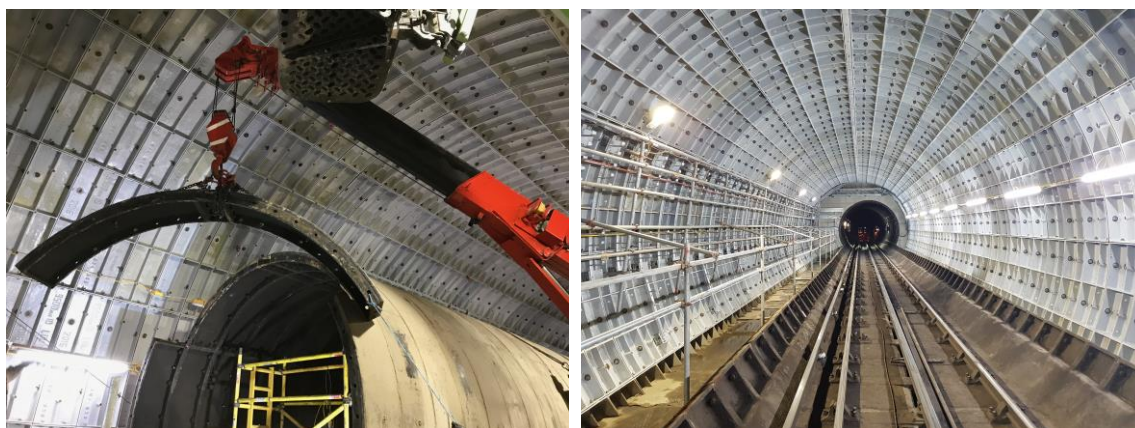
Thank you for your patience whilst we continue with the Northern Line Extension (NLE) works near you. We would like to update you on where we are and what is planned over the next couple of months.

What has been completed:

Over the last two months we have been carrying out works in preparation for the arrival of the Tunnel Boring Machine (TBM) to Kennington Green and works on merging the Step Plate Junction with the new NLE tunnel.

In September we carried out weekend works to remove the top of the loop tunnel which had been in place since 1926. This was carried out successfully and ahead of schedule.

We also completed the secondary lining works and installation of waterproofing within the new NLE tunnel. Preparation works for the arrival of the Tunnel Boring Machines also began during this time.



Above – removal of the tunnel rings and the finished tunnel

What is planned:

During the next two months, we will complete tunnelling at Kennington Green and begin the dismantling of the TBM. This will require the attendance of lorries and a crane to lift the TBM out. Some abnormal loads will be required to attend site to facilitate the removal – these will be planned with the assistance of the Metropolitan Police and will take place outside of peak travel times. We will notify you separately when these are scheduled.

Works to install waterproofing and secondary lining at the openings of the tunnel will also take place during the next two months. This will be followed by delivery of rails and materials in preparation for the Christmas works to replace the existing track and rail bed.

Please see overleaf

Over the Christmas period, we will be carrying out works to remove the remaining lower segments of the old cast iron rings of the Kennington Loop and existing track bed, and replace them with a new track bed and low vibrations rails. Work will commence from **00:30 December 23** and finished on **04:30 2 January 2018**.

During this period we will be carrying out concrete pours from **27 to 29 December**; this will require the attendance of lorries to site throughout the day and the night of the **27/28 December**. We will endeavour to close the shed doors whenever possible outside of core working hours. This will be followed by the installation of the new low vibration rails and testing. We aim to minimise disruption where possible. If you wish to discuss the works further, please contact the NLE at nle@tfl.gov.uk or **0343 222 2424 (option 1)** and we can provide you with information.

On occasion, a delivery of concrete may arrive late, due to circumstances outside our control, such as traffic delays. When this occurs, we will inform you as quickly as possible as to the cause and duration of the delay. We appreciate that a late delivery can be disruptive however once a concrete pour begins, it must continue to avoid the concrete setting. We will continue to notify you and the local authorities of these occasions if they arise.

Our working hours are now **24/7** to support tunnelling. This will continue until the completion of the shaft and tunnel in 2018.



Above – remaining invert tunnel rings to be removed

Our core working hours for non-tunnelling activities are **Mondays to Fridays 08:00 to 18:00** and **Saturdays 08:00 to 13:00** with quiet maintenance allowed between 13:00 and 18:00.

If you have any concerns or queries, please contact us at nle@tfl.gov.uk
or call our 24/7 Helpline.

0343 222 2424 (Option 1)