

Northern Line Extension

PROGRESS UPDATE

September – November 2019

NLE Nine Elms Station

Thank you for your patience whilst we continue with the Northern Line Extension (NLE) works near you. We would like to update you on where we are and what is planned for the next quarter.

What has been completed:

In June, the Nine Elms team constructed an external ramp connecting the Barratt's development car park to the station box. This now provides a vehicle route via Pascal Street, through the station to the parking area.

The utility works are complete on the south and south east sides of site and progressing on the north east corner and on the west end of the site.

As the focus has shifted from structural works to the 'fit out' stage, you will have also noticed the external façade is changing rapidly. The first phase of reconstituted stone cladding has been affixed to the eastern superstructure as shown in fig.1. The same finish will be applied to the western superstructure.

In addition, glass fibre reinforced cladding (the white panels shown in fig.2 below) have been installed at the ticket hall entrance. The ceiling, made up of golden aluminium tubes, also illustrated in fig. 2 has provided the architectural finish to the underside of the canopy. Internally, the mechanical and electrical (M&E) team have been progressing throughout the four station levels installing vast amounts of containments and conduits to house the cable management system required to power the future station. (See fig.3 below).



Fig.1 Stone cladding on the façade of the superstructure



Fig.2 Reinforced cladding at the entrance of the station complete with golden tubular ceiling

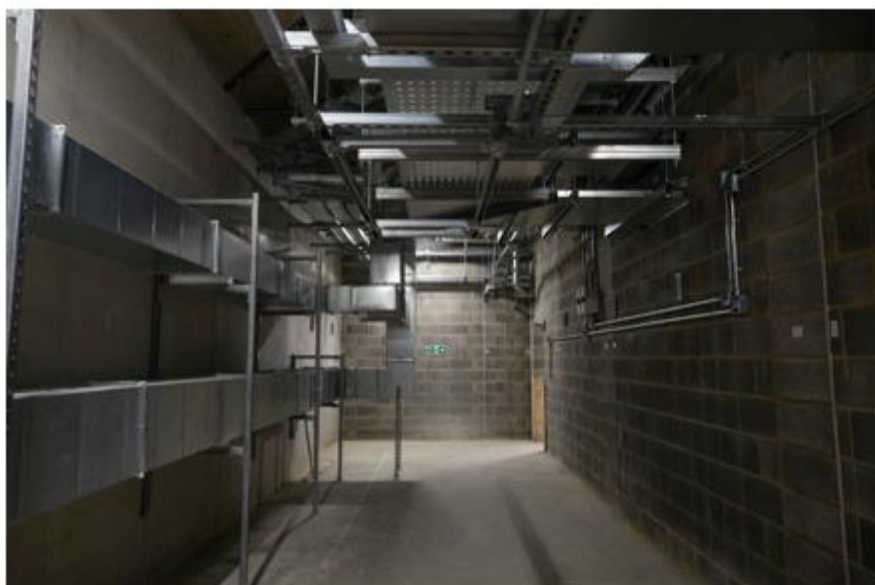


Fig.3 M&E installation of cable management systems



Fig.4 Preparatory works for escalator installation

What is planned:

The start of October will see the installation of the escalators which will transport commuters from the ticket hall entrance to the platform level. These will be positioned over the top of the precast reinforced concrete staircase which will be used for maintenance purposes and in the event of an emergency, see fig. 4 below.

In addition to the three sets of escalators, we expect to complete the lift installation which provides step free access for passengers to reach the platform level. This is located next to the ticket office at the main entrance which will see further transformation in October when glass panels are due to be installed in with the golden canopy to follow.

Over the next quarter, transformers, tunnel ventilation fans and dampers will be put in place within the station and metal works will commence which involves the installation of hand rails, metal doors and metal floors.

Externally, UKPN works will begin towards the end of October to provide power to the station. Access to mains supplies will be through Pascal Street. A specific activity notification will provide further details on this nearer the time.

In November, we will undertake the landscaping works outside the confines of the NLE site, at Arch 42 in Covent Garden Market. Works will initially involve breaking through the railway arch and creating a pedestrian pathway to provide access to the station from the West. This will connect into the Ballymore developments next to the American embassy. Works will take 6 months to complete.

Our core working hours are **08:00 to 18:00 Monday to Friday** and **08:00 to 13:00 Saturdays** on the surface.

For all activities related to fit-out, lifting and deliveries, we may also use the approved extended hours of **07:00 to 21:00 Monday to Friday** and **07:00 to 19:00 on Saturdays**.