

# Northern Line Extension

## PROGRESS UPDATE

November 2018-January 2019

### NLE Kennington Park

Thank you for your patience whilst we continue with the Northern Line Extension (NLE) works near you. We would like to update you on where we are and what is planned over the next three months.

#### What has been completed ?

Since August, the team at Kennington Park have made huge progress by removing nearly 16,000 tonnes of material during excavation to form the basement of the future head house. (See Fig. 1). The remaining section of the secant piled wall is being removed to connect the shaft to the basement and the floor slab is now complete allowing the focus to turn to the construction of the main structure of the head house.

Tunnelling works to construct the four new cross passages at Kennington Station concluded at the end of September when the platforms were reopened to the public on schedule. Fit out works will continue inside the hoarding followed by commissioning during engineering hours until mid-2019.

October saw a big milestone in the project when the first engineering train crossed over the new Northern Line Extension tracks. (See fig.2 below). These trains are being used to deliver sections of rail to complete the final stretch of track installation between Kennington and the future Nine Elms Station, (we have completed 150m at the Kennington Park site so far). This operation is helping to remove a number of heavy lorry movements from the road network in the area.



Fig. 1 Basement excavation and shaft at Kennington Park



Fig. 2 First engineering train to cross NLE tracks

## What is planned ?

Over the coming months, reinforced concrete works will be the main activity on site. This involves building a formation of columns to complete the remaining floor areas in the basement. Please see this work underway in the picture below as well as the digital image of the basement of the future head house. (Fig. 3 and 4).



Fig. 3

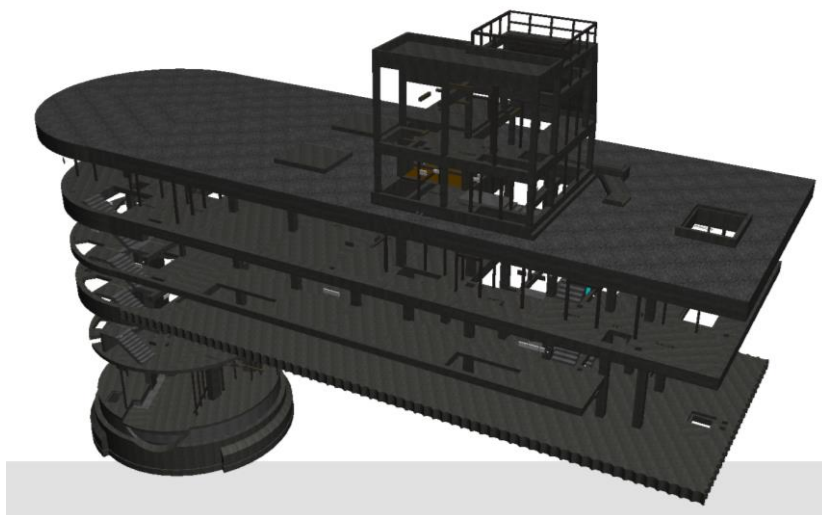


Fig. 4

The head house will start to appear out of the ground from February 2019 and construction will continue to form the main structural frame. Please note that brickwork cladding will follow in the spring to reflect the finished article. Please see the forecast of activities below.

Activity	Start Date	End Date
Removal of secant piles – re-sequenced work	End May	End November
Floor slabs in shaft/ basement (in situ and precast concrete operations)	May 18	January 19
Kennington Park head house - Superstructure - Ground to roof level	January 19	April 19
Mechanical Electrical installation	May 2019	Spring 2020
Hard and soft landscaping at Kennington Park – removal of remaining foundations and concrete surface from site, (this will involve some breaking) removal of hoardings etc.	Summer 2020	

**Please note the site will be closed for Christmas between 21 December and 02 January.**

Our core working hours for non-tunnelling activities are **Mondays to Fridays 08:00 to 18:00** and **Saturdays 08:00 to 13:00** with quiet maintenance allowed between **13:00 and 18:00**  
**Tunnelling works take place 24/7**