

Northern Line Extension

Kennington Park and Newington

Community Liaison Group

24.06.15



NLE Project Draft timetable

Year	Key milestones
2014	Transport and Works Act Order decision, Design & Build contract signed
2015	Agreement on Code of Construction Practice Part B, Start of main works at all sites
2016	Start of Tunnel Boring Machines
2017	Completion of tunnelling
2018	Fit out of new stations, Kennington shafts complete inc reinstatement, work at Kennington station complete
2019	Testing, commissioning, trial operations
2020	NLE complete and in service

Summary Update March-June 2015



1) Hoarding Install



2) Demolition of Lodge



3) Closing of Road for Gas Diversion



4) Laying New Gas main



5) Topsoil strip



6) Piling Mat Install



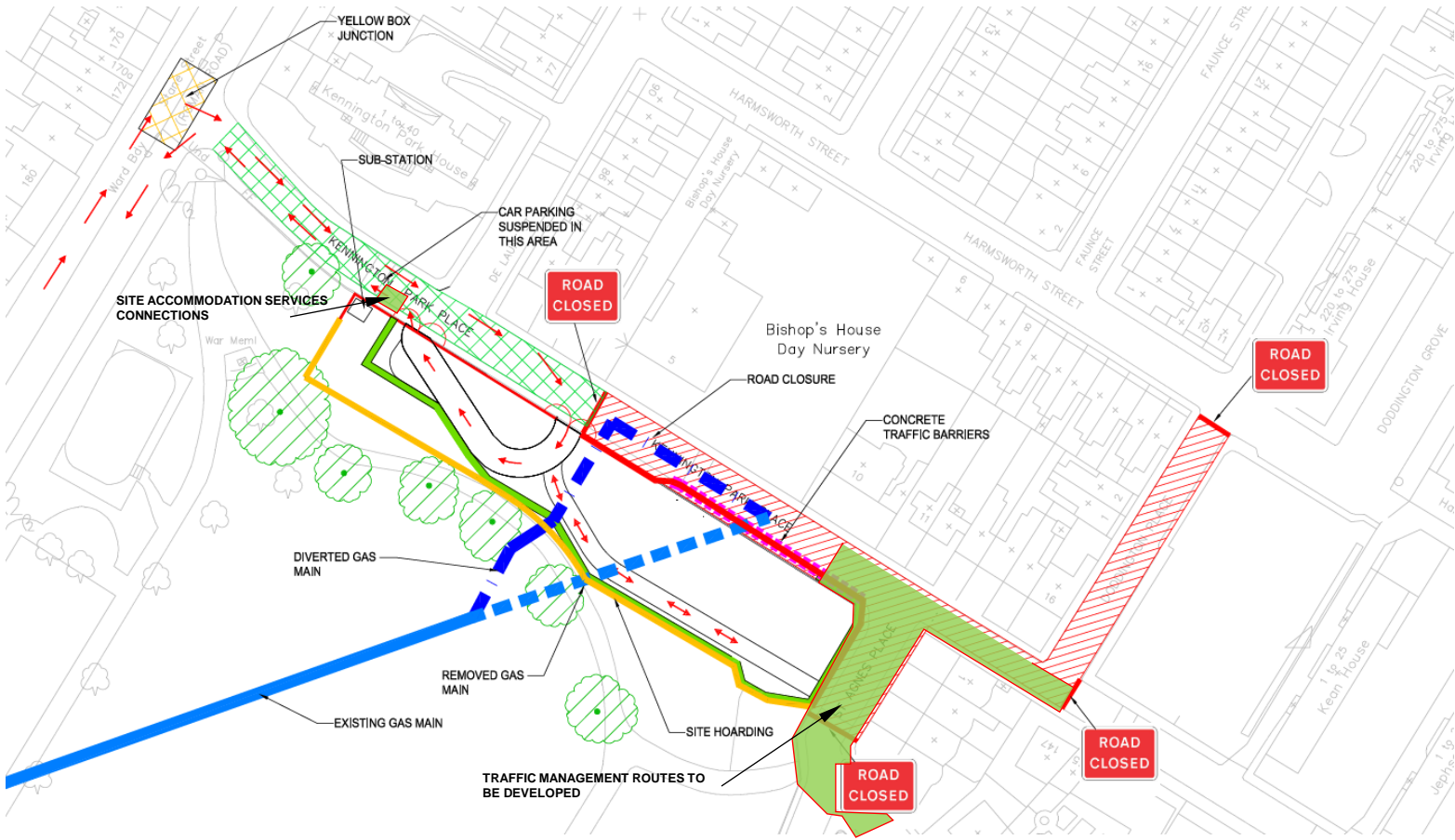
Kennington Park look ahead



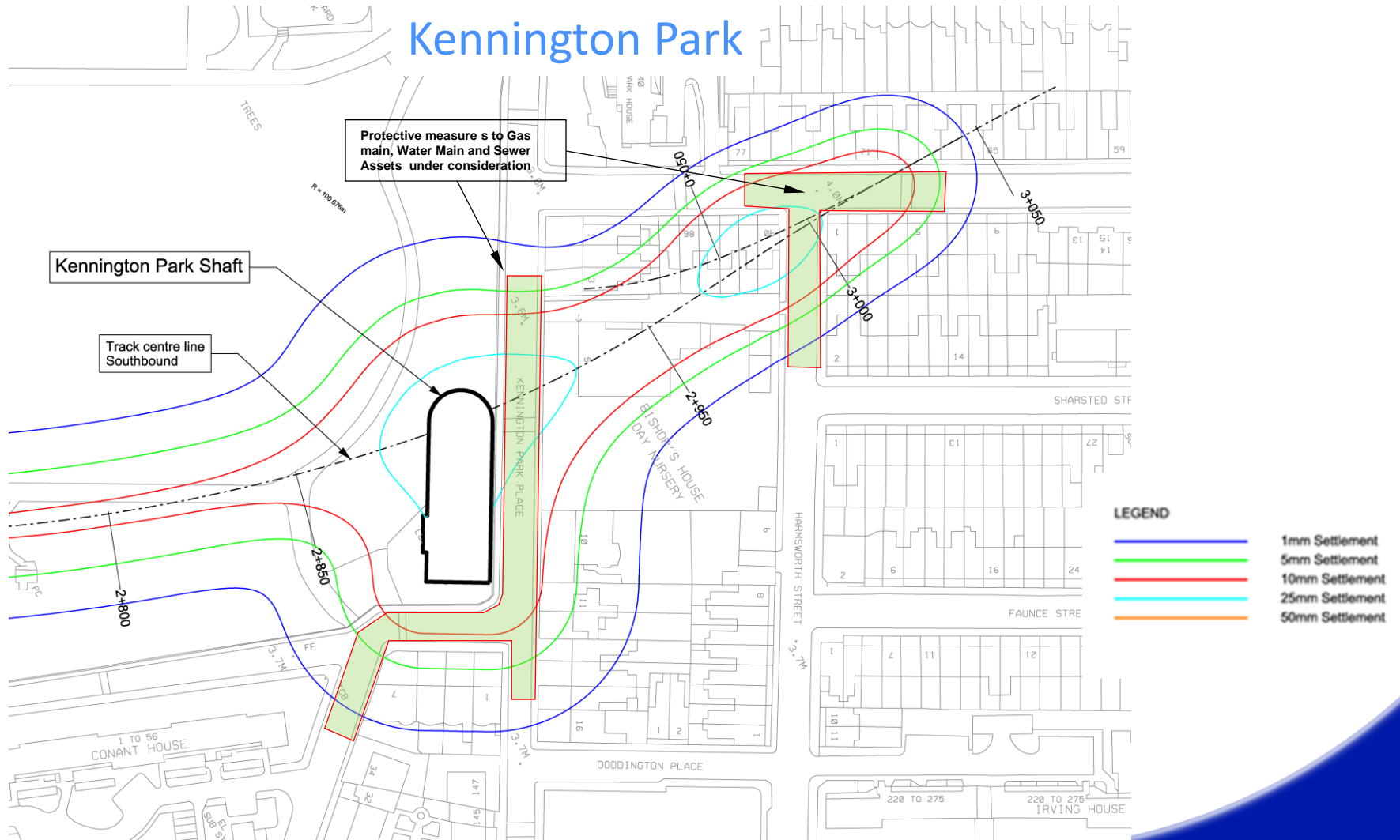
Year	Key milestones
Jun – Aug 15	<ul style="list-style-type: none">• Commence and complete hoarding• Install construction accommodation onsite• Demolish lodge• Lay piling mat• Complete surveys• Appoint piling contractor• Progress utilities diversionary works
Sep – Nov 15	<ul style="list-style-type: none">• Complete pre-construction utilities diversionary works• Install guide walls• Commence Secant Piling



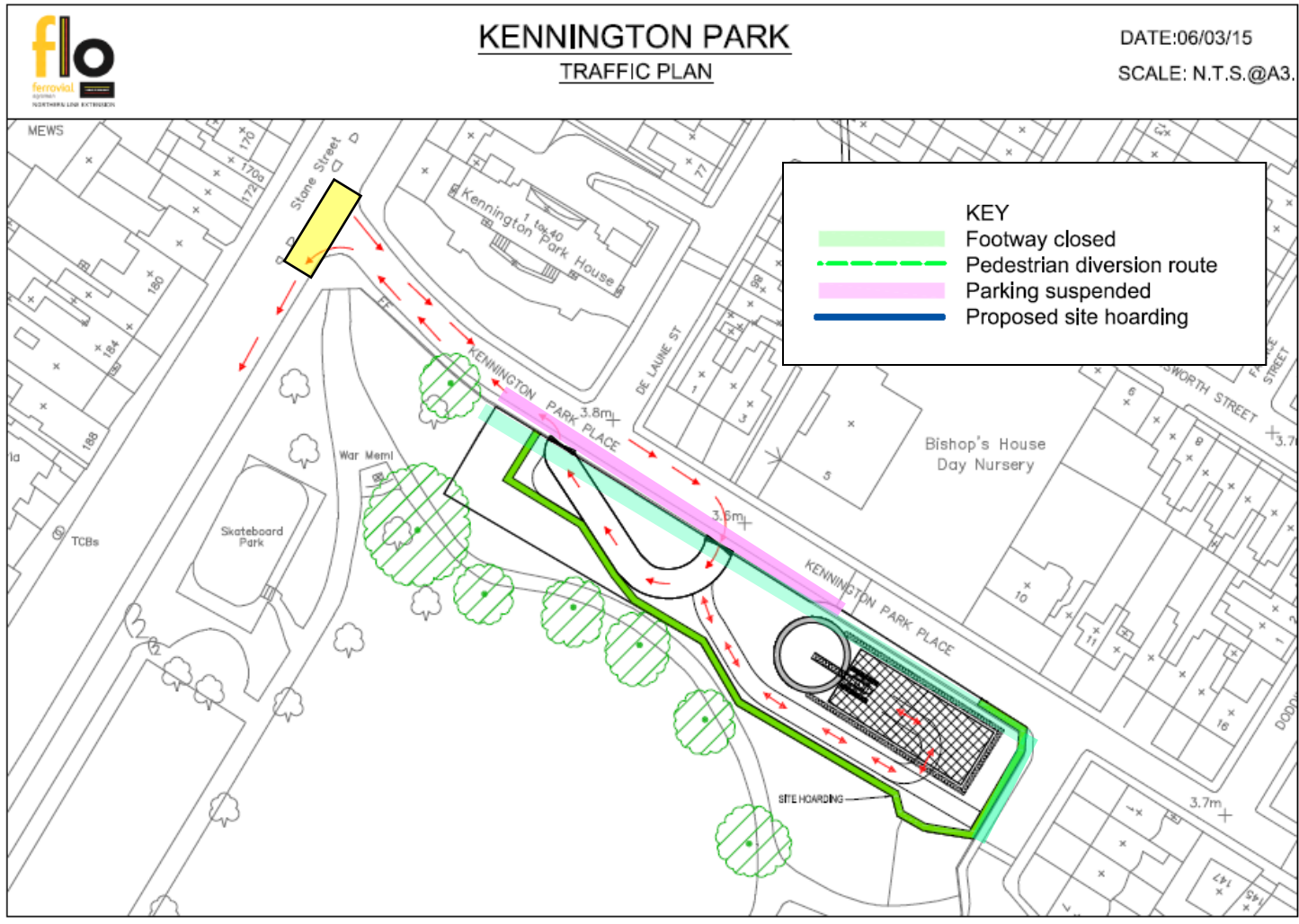
SGN works – Road closure



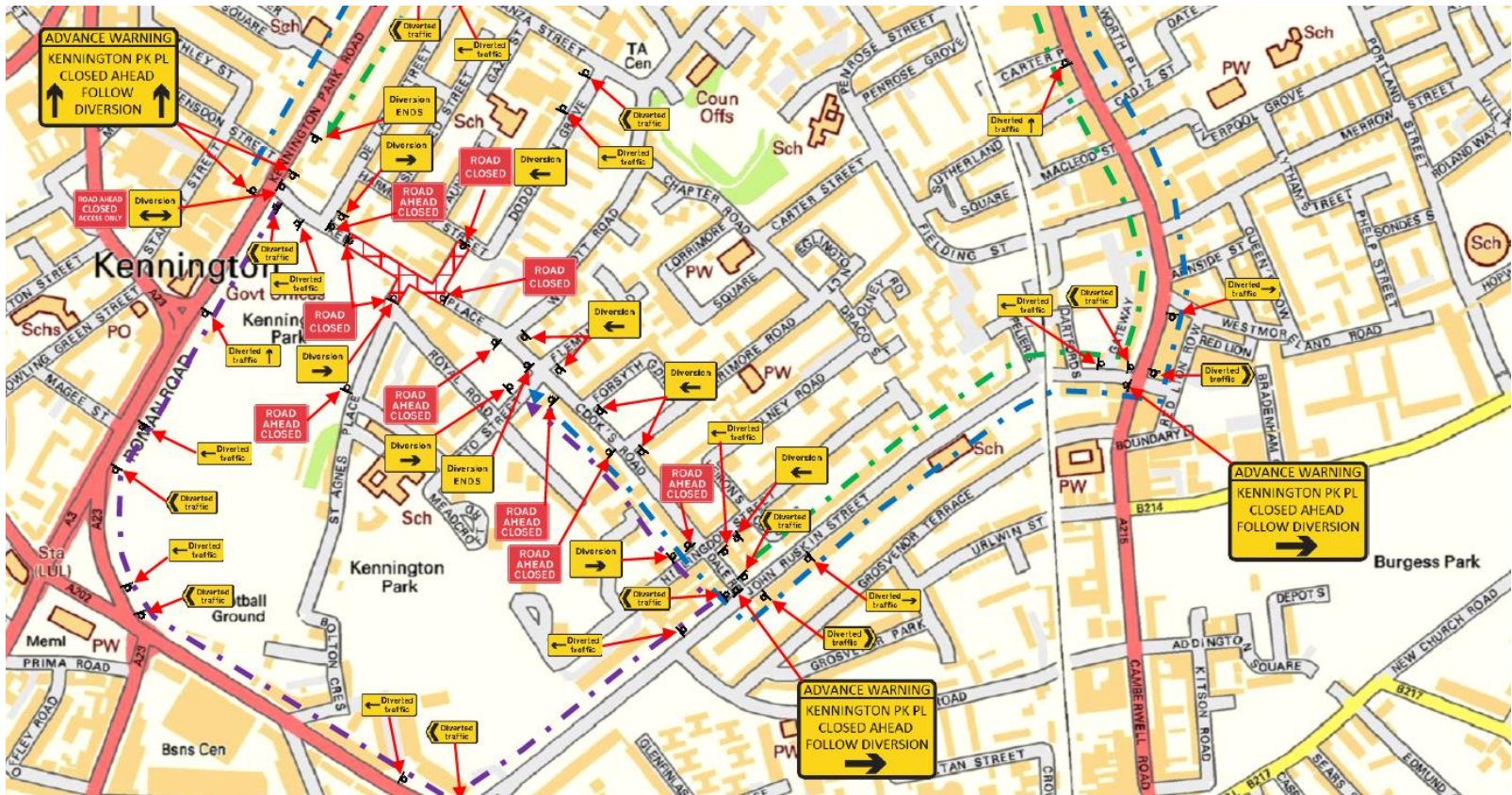
Utilities Protective Measures



Traffic Management Plans



SGN Works – Traffic diversion route



Thank You

Ground Investigation

- FLO is in the RIBA 4 design process with TfL further developing effective solutions for the design and build of the NLE project.
- Compensation grouting has been removed from programme.
- Ground conditions for tunnelling predominantly London Clay. An ideal tunnelling medium.
- Groundwater/ step plate junction within a full face of impermeable London Clay.

Instrumentation & Monitoring



- Consultants finalising damage assessments which will inform the detailed monitoring scope – which is crucial for programme success required in this period.
- Monitoring tender returns are currently under review. Monitoring subcontract award is imminent.
- Installation of ground monitoring studs around shaft area commenced April 2015. Base readings have been taken.
- A minimum of 4 weeks notice will be given to building owners prior to the installation of monitoring equipment.
- Monitoring equipment will comprise Building Research Establishment (BRE) studs (structure levelling studs) and 3D geodetic prisms.



Monitoring techniques

Buildings – Real time data:

3D geodetic prisms



Automatic Total Station (ATS)



Prisms

ATS: an electrical/optical instrument used in modern building construction to measure slope distances from the instrument to a particular point.

Monitoring techniques

Buildings – Manual data:

BRE studs (structure levelling studs)



Hoardings Kennington Park



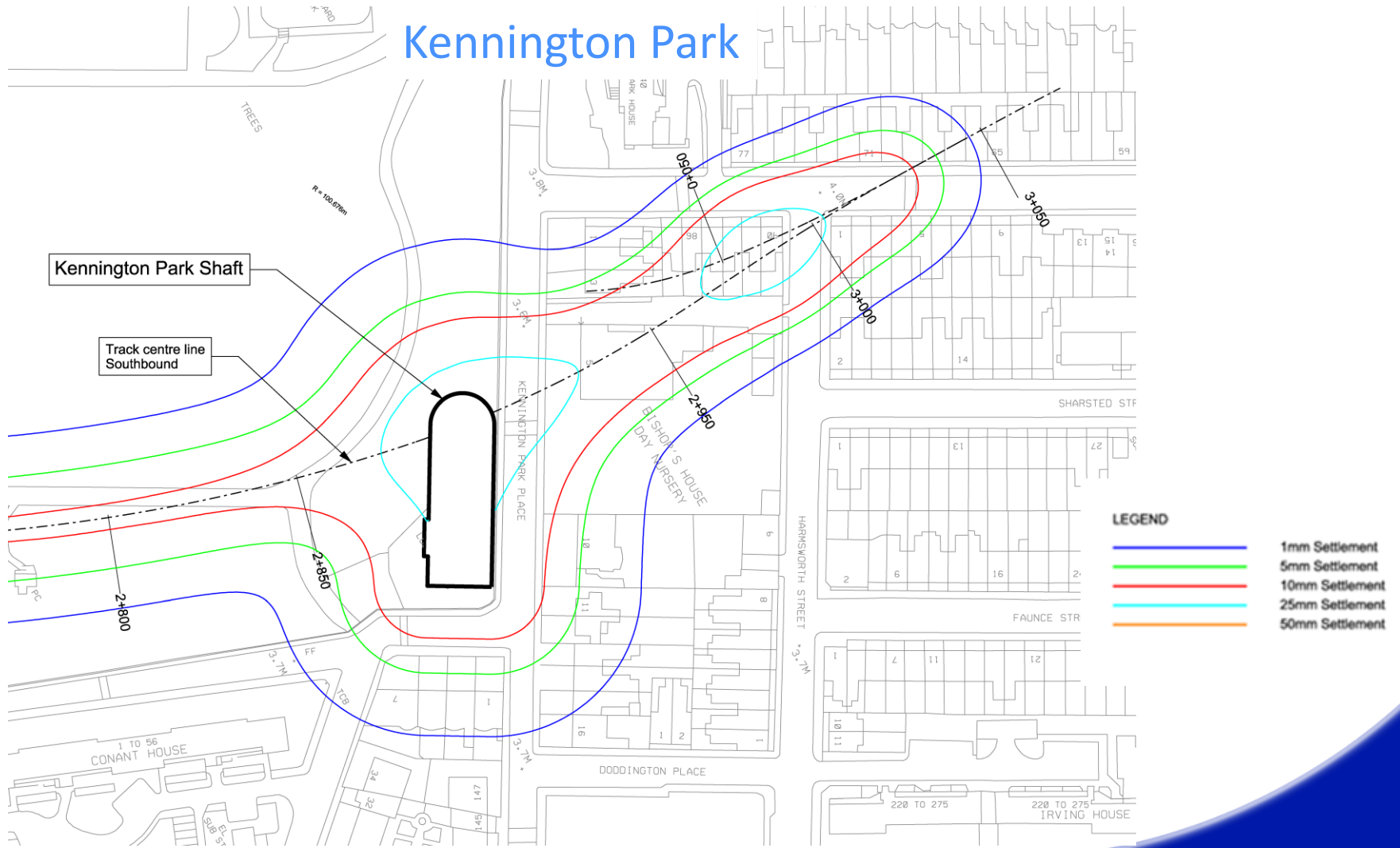
- Permanent hoardings being installed at Kennington Park
- 2.4 metres high
- Corporate TfL standards followed
- 24/7 Helpdesk contact details to be presented at all hoardings / Notice Boards
- Installation of graphic work later in the year. Pattern sympathetic with the environment



Hoardings at Kennington Park



Settlement Contours



Defect / Condition Surveys



- To be undertaken on properties predicted to experience 1mm or more settlement.
- TfL has started contact to affected properties via introductory letter.
- Subcontract has awarded is CPM Surveys Ltd.
- Around shafts, surveys will commence in July/August to ensure they are undertaken no earlier than 12 weeks, and no later than 4 weeks prior to the commencement of construction of the relevant part of the works.
- In areas of Spray Concrete Lining (SCL) works and Step Plate Junctions surveys will be undertaken at a later date in advance of construction (second half of 2016 and first half of 2017)
- Where necessary, a second survey will be undertaken to establish the difference between the two assessments. Photographic and written.



Code of Construction Practice Part B

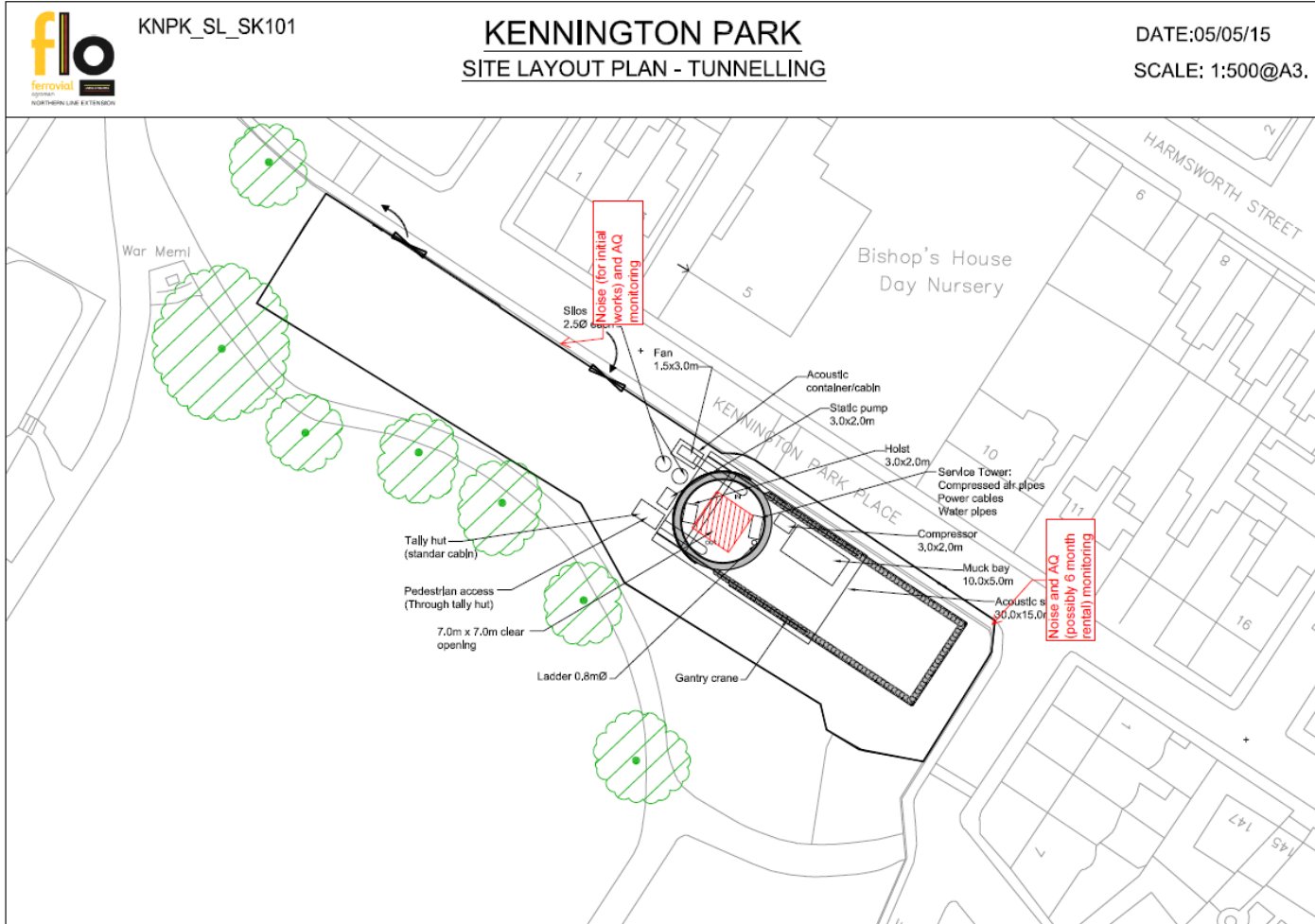
- The Code of Construction Practice was approved by the London Borough of Lambeth in May
- The requirements of the Code of Construction Practice parts A and B have been incorporated into the FLO practices and procedures
- Core working hours are from 08:00 to 18:00hrs Monday to Friday and 08:00 to 13:00hrs on Saturdays



Environmental Monitoring

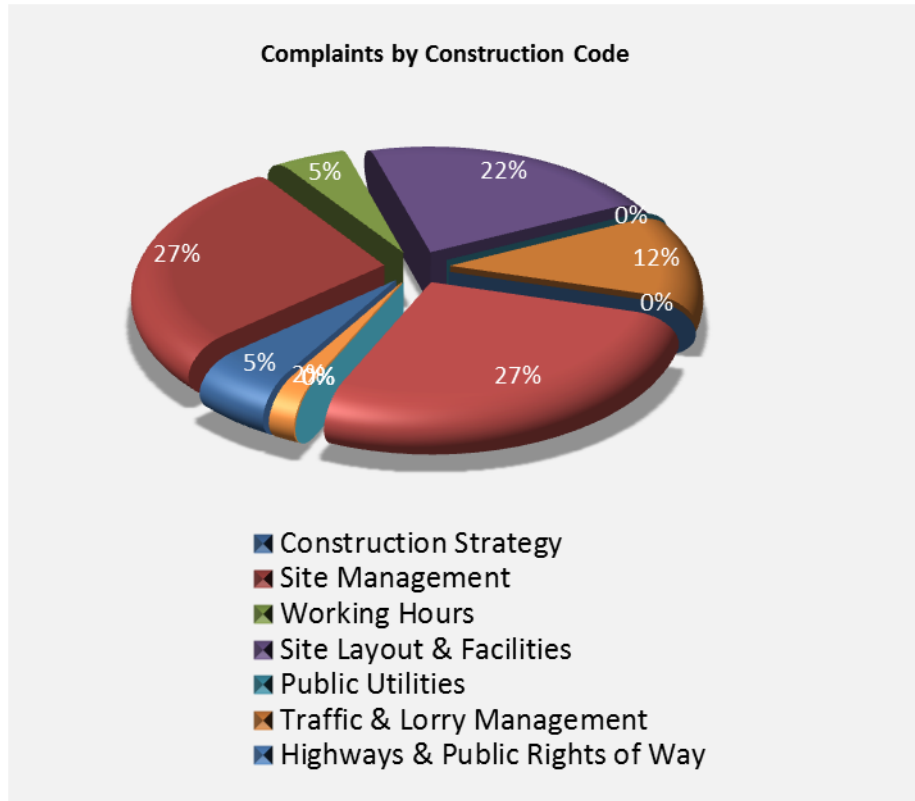
- Noise (and air quality) monitors will be installed on the site hoarding, (once agreed with LB Lambeth). This will complement the attended monitoring currently being undertaken.
- Noise predictions show that an acoustic shed will be needed to minimise the noise associated with 24/7 tunnelling works.
- For all other activities a standard height hoarding (2.4m) will provide sufficient screening to meet the requirements of the NLE Construction Noise Mitigation Scheme

Proposed Monitoring Locations



Kennington Enquiries Summary

March – June 2015



-> 43 enquiries complaints
Kennington Area. From
March - June

-> Road Safety / Traffic
Management Site
management

-> 98% Closed

-> Positive feedback from
Drop-in sessions and
complaints handling

-> Detailed list of complaints
and enquiries with Local
Authorities



Updates and newsletters

- Monthly Activity Updates sent out 29 May and 12 June 12. Invitation for a Drop In sent 15 June
- Via letter drop and emailing list
- NLE Quarterly newsletter to distributed mid June
- Drop in session held at Bishop House Nursery on 18 June
- Positive feedback received from attendants
- Future drop in to be scheduled in due course

Kennington Park Updates / Newsletters



f|o
Kennington

TRANSPORT FOR LONDON
EVERY JOURNEY MATTERS

Northern line extension

MONTHLY UPDATE

June 2015

Kennington Park

Thank you for your patience while we continue to set up the Northern line extension (NLE) Kennington Park worksite. We would like to give you an update on how things are progressing and the main activities planned for June.

In May we progressed with establishing the site including fencing off the main construction area. The Southern Gas Network (SGN) gas diversion across the northern end of the Park has also begun (please see image overleaf).

Enabling works are also progressing within our main site. We are carrying out archaeological surveys, leveling the ground to road level, laying the foundations for an internal site access route for our vehicles and installing a site cabin which will serve as a welfare unit for NLE staff. Please note delivery of this cabin will be carried outside core working hours due to the abnormal size, as instructed by the Metropolitan Police and the Highway Authority. Our vehicle marshals will assist with the operation to ensure this is done safely and in the minimum time. This delivery is planned to take place around the first week of June, exact date will be emailed.

Our core working hours are Monday to Friday 0800 to 1800 and Saturdays 0800 to 1300

Installation of a permanent hoarding (2.4m in height) around the perimeter of our main construction site commenced on the 26 May. This will help to reduce noise emissions and keep the site contained. We are expecting this installation to take up to four weeks. We will also be proceeding with the demolition of the Kennington Park lodge in June.

As gas diversion works progress, we are planning to close Kennington Park Place and Doddington Place in the coming month. We will advise you closer to the date through our Activity Notifications and/or email. We will be holding drop-in sessions for anyone who would like to come along and talk to us about the activities we are carrying out and to get further updates. Dates will be confirmed soon.

We will endeavour to minimise disturbance and will manage the work in accordance with the Code of Construction Practice, including the control of noise, vibration and dust using best practicable means.


Your feedback is important to us. The next Community Liaison Group for Kennington Park and Newington is scheduled for the 24 June (exact location to be confirmed). Please get in touch if you have any questions about these works or would like to attend the next Community Liaison Group meeting.

If you have any concerns or queries, please contact us at nle@tfl.gov.uk
or call our 24/7 helpdesk on 0343 222 2424

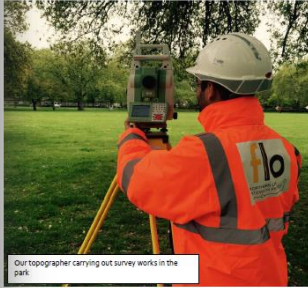
nle@tfl.gov.uk
0343 222 2424
tfl.gov.uk/northern-line-extension

Ref: FLO-N143-2360000-COM-NTF-00006

TRANSPORT FOR LONDON
EVERY JOURNEY MATTERS



Diversion of Gas main



Our topographer carrying out survey works in the park.

nle@tfl.gov.uk
0343 222 2424
tfl.gov.uk/northern-line-extension

f|o
Kennington

TRANSPORT FOR LONDON
EVERY JOURNEY MATTERS

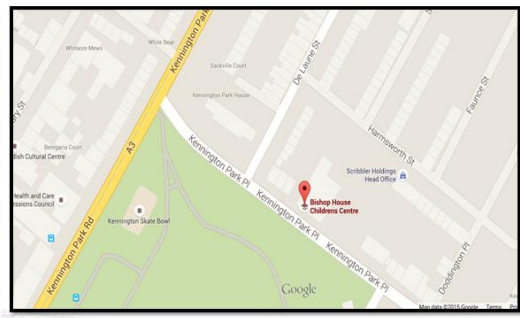
Northern line extension

INVITATION

15 June 2015

Kennington Park & Kennington Green Information Day – Thursday 18 June 2015 – Bishop House Children's Centre, 5 Kennington Park Place – Entrance via Harmsworth Street

The Northern line extension (NLE) site set up has now commenced along the route and we would like to invite our neighbours in the Kennington community to visit our Information Day. This is an opportunity to find out more about the project in general and to talk to representatives from the Project Team. The Information Day will be held between 9:30 am and 6:00 pm in the Foyer of Bishop House Children's Centre, 5 Kennington Park Place, London SE11 4AS (entrance via Harmsworth Street).



If you have any queries, please contact us at nle@tfl.gov.uk
or call our 24/7 helpdesk on 0343 222 2424.



Kennington Park Updates / Newsletters



f|o for roadworks

TRANSPORT FOR LONDON
EVERY JOURNEY MATTERS

Northern line extension

12 June 2015

Update on Southern Gas Networks works around Kennington Park

Dear Residents,

We apologise for any inconvenience caused by the current Southern Gas Networks (SGN) works in the area. As you may be aware, these are enabling works for the Northern line extension.

SGN are relocating a 24" gas main to a safe location outside of the tunnelling worksite. As a part of these works we have had to temporarily close both Doddington Place and Kennington Park Place. This is due to the requirement to "flow stop" the gas stream in two locations in close proximity to the section of pipe that is to be replaced. The "flow stopping" also requires specific safe working areas and the two locations that are most suitable are Kennington Park Place and Doddington Place.

Please find enclosed a copy of the Traffic Management Plan (TMP) which gives the details of the diversions that have been put in place. We assure you that access for local residents will be maintained and further notifications will be sent to update you on the next stage of works. Please note that this stage will be carried out under a traffic light control system – one located on Kennington Park Place and one on St. A. The work will be carried out on one side of the carriageway to allow residents continued access.

Concerns have been raised regarding properties receiving deliveries while the road diversions are in place. We have now placed symbols on the signs for each of the diversion routes. Please note the key on the sign is a blue route (black circle), green route (black triangle) and a purple route (black square) and the signs now have the symbol indicating which route to follow to access the other side of the diversion.

SGN have also requested, from Southwark Council, a few temporary changes within the current roadworks available that are closed or one-way; as soon as updates are available we will pass on the information.

We hope the above measures are of assistance. If you have any further questions please do not hesitate to contact us.

We will endeavour to minimise disturbance and will manage the work in accordance with the Code of Construction Practice, including the control of noise, vibration and dust using best practicable measures.

Thank you for your patience.

Our core working hours are Monday to Friday 08:00 to 18:00 and Saturday from 08:00 to 18:00. If you have any concerns or queries, please contact us at nle@tfl.gov.uk or call our 24/7 helpdesk on 0343 222 2424.

Ref: FLO-NI-43-2360000-COM-NTF-00007

tfl.gov.uk/northern-line-extension

f|o for roadworks

TRANSPORT FOR LONDON
EVERY JOURNEY MATTERS

Ref: FLO-NI-43-2360000-COM-NTF-00007

nle@tfl.gov.uk
0343 222 2424
tfl.gov.uk/northern-line-extension

f|o for roadworks

TRANSPORT FOR LONDON
EVERY JOURNEY MATTERS

Ref: FLO-NI-43-2360000-COM-NTF-00007

nle@tfl.gov.uk
0343 222 2424
tfl.gov.uk/northern-line-extension



NLE Newsletter June 2015



Northern line extension

Issue 3 • June 2015



Prep work starts at all NLE sites

Work to prepare the Kennington Green, Kennington Park, Nine Elms and Battersea Power Station NLE sites began in March. This follows the approval of the Code of Construction Practice Part B by local authorities. The Part Bs are tailored to the nature of the works planned at each site.

This is a major accomplishment for the project team and has been achieved through hard work and collaboration with the local authorities as well as very useful feedback from residents along the route.

Work in the last three months at these sites includes:

- Clearing the site
- Setting up for new site accommodation
- Checking the ground for obstruction
- Archaeological and ordinance surveys
- Utility diversions
- Installing temporary hoardings
- Implementing traffic management schemes

Kennington

We are creating two permanent shafts at Kennington Park and Kennington Green to provide ventilation, cooling and emergency access to the tunnels.

At Kennington Green, temporary fencing has been installed and site offices have been established at the Montford Place support site. Utility diversion works are ongoing and the traffic is being managed accordingly. We have been working closely with utility services and the local authorities to ensure we keep disruption to a minimum.

Work over the next three months includes:

- Continuing utility diversions
- Putting up permanent hoarding
- Tree removal and lopping



Utility diversions

At Kennington Park, we have been busy clearing the site and conducting archaeological and ordinance surveys. Diversion of utilities in this area has also started, including diversion of a major gas main.

Work over the next three months includes:

- Relocating the pedestrian entrance at Bishops House Nursery
- Continuing utility diversions
- Installing permanent hoardings
- Demolishing the Lodge

Nine Elms

We are building a new Underground station at Nine Elms near Pascal Street and Wandsworth Road.

The boiler house on site has now been demolished. Material from the demolished building is now being re-processed to use in the piling mat (which is the base from which the excavation of the station box is formed)

Works over the next three months include:

- Power diversions and installation of a new power feed to the site
- Delivery and fitting out of site offices
- Continuing construction of the piling mat and guide walls
- Demolition of Covent House and Banhams Security building



Demolition of the boiler house



Demolition of the chimney

Community Liaison Groups

The following Community Liaison Groups meet regularly to provide residents, businesses and councillors with an opportunity to find out more about the Northern line extension:

- Kennington Park and Newington
- Kennington Green
- Nine Elms and Oval
- Battersea

- Core Group – An overall liaison group that considers route-wide issues

Residents are welcome. Presentations, minutes and details of upcoming meetings are on our website tfl.gov.uk/northern-line-extension.

Transforming the Northern line

The extension includes more than 3km of new tunnels connecting to the existing Northern line at Kennington and two new Underground stations at Nine Elms and Battersea.

The extension is part of a massive investment programme to transform the Northern line which includes:

- A signalling upgrade which has achieved a 20 per cent increase in capacity through central London
- A 24-hour Tube service on Fridays and Saturdays from September
- Plans to rebuild Tube stations that are critical to improving capacity and supporting regeneration. These include Tottenham Court Road, Bank, Camden Town and Elephant & Castle

Staying in touch

For more information and to register for updates on the scheme, visit tfl.gov.uk/northern-line-extension

You can also email the project team at nle@tfl.gov.uk or call our helpdesk on 0343 222 2424.

Timeline



MAYOR OF LONDON



Skills and apprenticeships



- Skills & Employment Strategy, Delivery Plan for Schools and Young People on-going
- FLO to host 5 Work Experience Students from Ernest Bevin College, Wandsworth. Starting 22 June 2015.

Employment/Skills/Diversity on the NLE programme

- FLO is working in partnership with TfL and the local authorities – including the Nine Elms Vauxhall Strategy Board Employment, Training & Business Charter, Wandsworth Chamber of Commerce and Nine Elms Supply Chain
- Make sure employment/training opportunities are advertised within the job opportunity/brokerage schemes operated by Southwark, Lambeth & Wandsworth councils
- Encourage job starts for workless people in London, placement & taster positions, apprenticeships, skills development for staff, engagement with schools



Jobs and Business Opportunities



- FLO has created a working group with Local Authorities and local brokerages to ensure opportunities are advertised and promoted locally
- **LEAP Group; Local Employment and Procurement Group NLE**
- Small and medium business had the opportunity to meet with major contractors at an event in BPSD. FLO in attendance.
- FLO continues to engage with small and medium companies through events and endeavours to recruit / source locally when possible.



Community engagement strategy



- Draft Strategy 6 month Look Ahead. Tabled.
- Includes community comments and forecast activities
- **6 months look ahead include:**
- Engagement with local groups
- Community Drop-in sessions
- School activities to start within the next period.
- Identification of new resident groups within the Kennington area



Consents



Key approvals granted since the last CLG meeting

Code of Construction Practice Part B (planning condition 7) – all sites	L B Lambeth, Wandsworth
All sites – application to discharge planning condition 10 - Archaeology – all sites	L B Lambeth, Wandsworth
Approval of the Yellow Box Junction (planning condition 18) – Kennington Park	LB Southwark
Marine approvals (TWAO protective provisions) - Battersea	Environment Agency, Marine Management Organisation, Port of London Authority

Current applications under determination

Removal of a single tree (planning condition 5)– Kennington Green	LB Lambeth
Application for the fixing of monitoring to Listed structures (planning condition 11)– Kennington Park and Kennington Green	LB Lambeth and LB Southwark

