

# Northern Line Extension

## PROGRESS UPDATE

November 2018-January 2019

### Kennington Green

Thank you for your patience whilst we continue with the Northern Line Extension (NLE) works near you. We would like to update you on where we are and what is planned over the next three months.

#### What has been completed?

The Kennington Green site has undergone a major transformation since the summer in preparation for the construction of the headhouse. Excavation is complete and the team has successfully removed the secant piles which means that the shaft is now completely connected to the basement. (See fig.1 below of this work in progress). The formation of the internal structure and basement construction is progressing well. With over 50% now complete, you will start to see the removal of the yellow propping system.

Tunnelling works to construct the four new cross passages at Kennington Station concluded at the end of September when the platforms were reopened to the public on schedule. Fit out works will continue inside the hoarding followed by commissioning during engineering hours until mid-2019.

October saw a big milestone in the project when the first engineering train crossed over the new Northern Line Extension tracks. (See fig.2 below). We will be utilising these trains to deliver sections of rail to complete the final stretch of track installation between Kennington and the future Nine Elms Station. This operation is helping to remove a number of heavy lorry movements from the road network in the area.

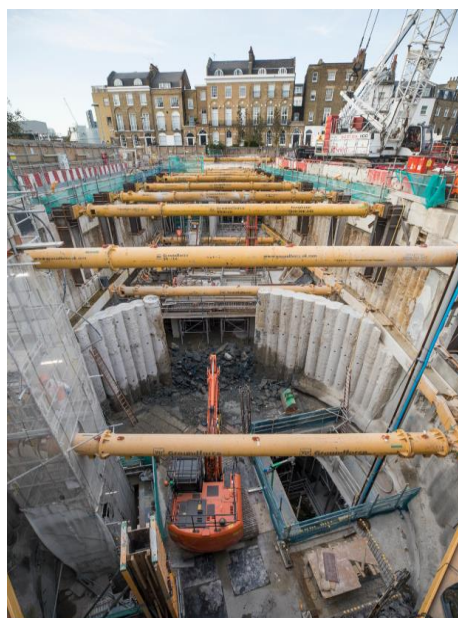


Fig. 1

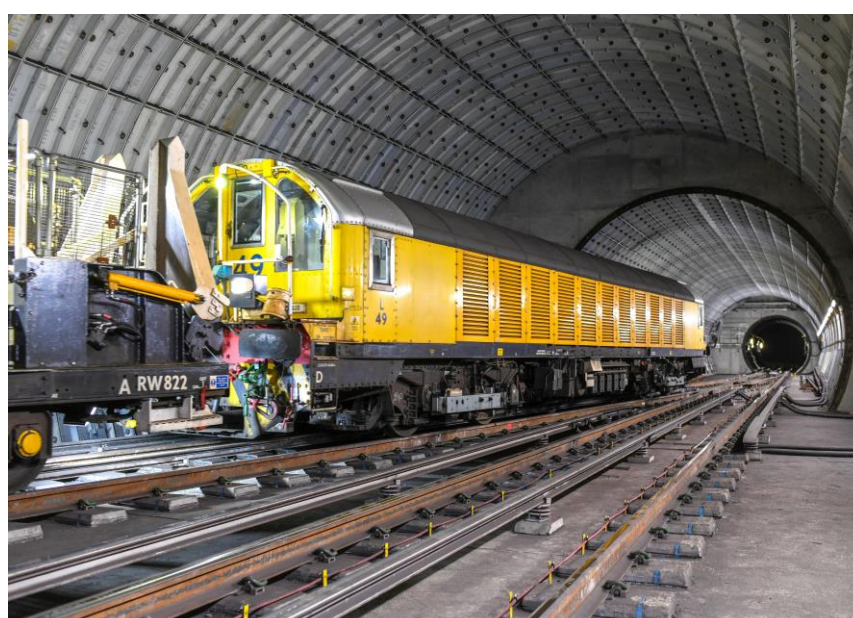


Fig. 2

The basement level -2 and -1 floor slabs are now complete which will see the excavation start to close up. These floors will provide the space and various rooms required for all of the equipment which will be contained within the basement structure to operate the extension safely.

[nle@tfl.gov.uk](mailto:nle@tfl.gov.uk)

0343 222 2424

[tfl.gov.uk/northern-line-extension](http://tfl.gov.uk/northern-line-extension)

## What is planned?

Reinforced concrete works will continue until March 2019 to make the basement water tight and to complete the remaining floor areas in the basement. Lorry movements will remain consistent throughout this period with on average 15 concrete mixer trucks attending site to facilitate these works.

The future Kennington Green head house will start to appear out of the ground before Christmas and construction will continue into the early part of the new year to form the main structural frame. Please note that brickwork cladding will follow in the spring to reflect the finished article. Construction of the basement for the head house will continue throughout the year.

Here is a forecast of activities planned for the NLE Kennington Green site. N.B. these dates are indicative and may change as the work progress:

Activity	Start Date	End Date
Floor slabs within the shaft/ basement (in situ and precast concrete operations)	May 2018	November 2018
Kennington Green Head house – Superstructure - Ground to roof level	November 2018	February 2019
Utility works scheduled to take place at the corner of Montford Place with Kennington Road	February 2019	April 2019
Mechanical & Electrical Installation	February 2019	Spring 2020
Hard and soft landscaping at Kennington Green – removal of remaining foundations and concrete surface from site (this will involve some breaking) , removal of hoardings etc.	Summer 2020	

There might be occasions when the Montford Place site will need to be used to support the works at Kennington Station out of hours. We will endeavour to let you know in advance.

**Please note the site will be closed for Christmas between 21 December and 02 January.**

All above-mentioned works will be carried out diligently and will be monitored to ensure we use best practicable means to minimise impacts. This notification is being communicated to the local authority.

Our core working hours for non-tunnelling activities are **Mondays to Fridays 08:00 to 18:00** and **Saturdays 08:00 to 13:00** with quiet maintenance allowed between **13:00 and 18:00**  
Tunnelling works take place **24/7**

If you have any queries, please contact us at [nle@tfl.gov.uk](mailto:nle@tfl.gov.uk) or call our 24/7 Helpline **0343 222 2424 (Option 1)**