

Northern Line Extension

Core Community Liaison

Group meeting

19 / 07 / 2016

Delivering the Northern line extension with

ferrovial
agroman



MAYOR OF LONDON



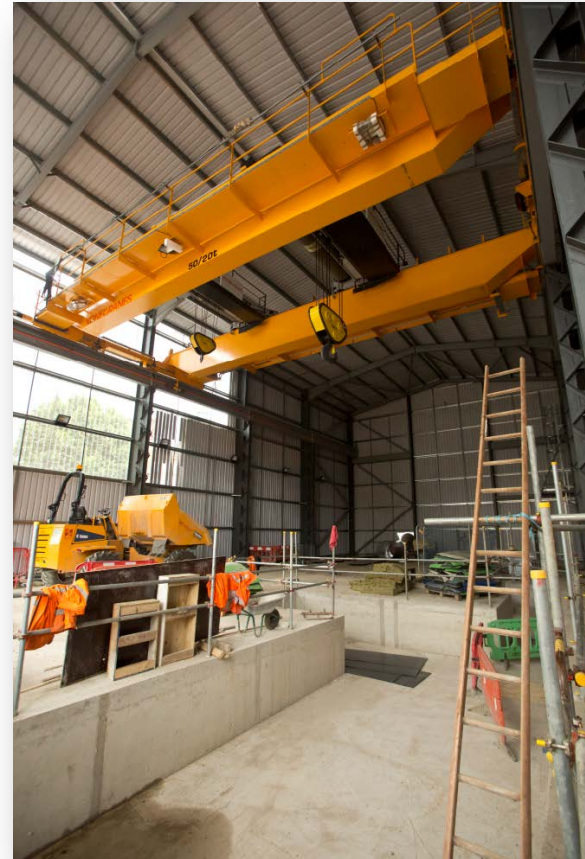
TRANSPORT
FOR LONDON



Kennington sites

Summary Jan - July 2016

- Piling works / capping beam works completed
- Acoustic enclosures installed
- De-watering works completed
- Preparation of the shaft areas
- Ongoing monitoring and surveying around critical areas
- Ongoing development of the landscaping and Head house schemes at both Kennington sites



Kennington Green Head House submission



FERROVIAL AGROMAN
LAING O'ROURKE JV



Kennington Sites Jan – July 2016



FERROVIAL AGROMAN
V

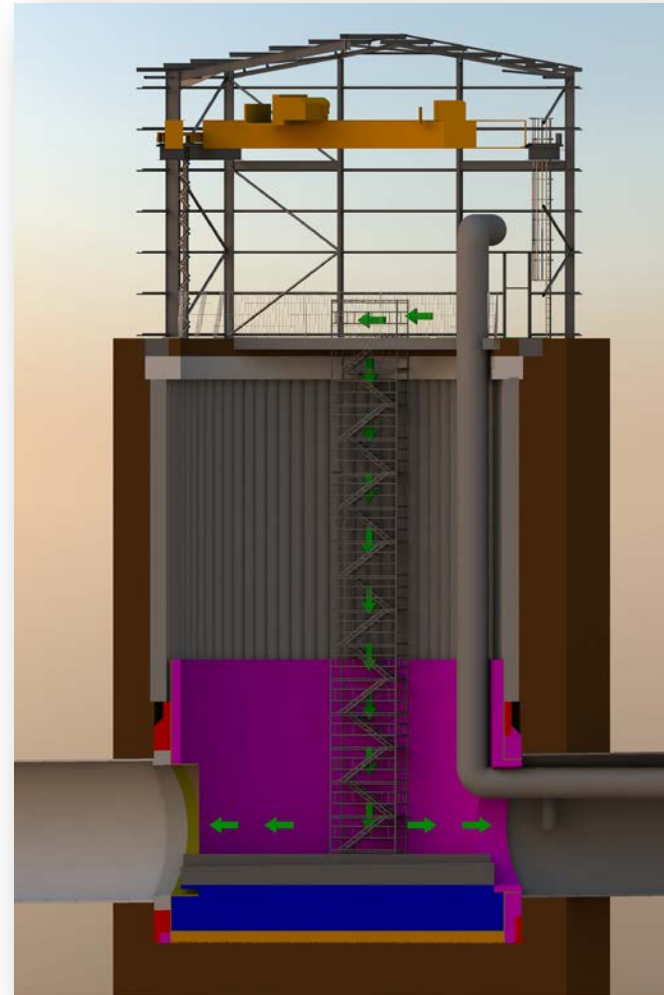


Kennington Look Ahead July- Sep 16



FERROVIAL AGROMAN
LAING O'ROURKE JV

- Excavation of shaft
- Shaft construction & sprayed concrete lining (SCL) tunnelling commenced – 24/7 works
- Ongoing monitoring equipment installation and pre-construction defect surveys
- Temporary crossing installation to south of Green (progressing)



Temporary Noise Enclosures



Receptor	Acoustic Enclosure Noise attenuation predictions L_{Aeq} (dB)		
	No enclosure	With door open (daytime)	With door closed (night time)
KG1	71	65	44
KG2	76	66	35
KG3	70	35	33

Temporary Noise Enclosures



Receptor	Acoustic Enclosure Noise attenuation predictions L_{Aeq} (dB)		
	No Shed	With Shed Door open (daytime)	With shed door closed (night time)
KP1	65	34	32
KP2	69	38	36
KP3	65	63	42

NE & Battersea Jan – July 2016

- Most piling works completed at both Battersea and Nine Elms
- Commencement of capping beam construction at both NE & Bat
- Nine Elms average of 900t of excavated material a week.
- Installation of 40 m long gantry crane at Nine Elms
- On-going monitoring installation



Nine Elms and Battersea



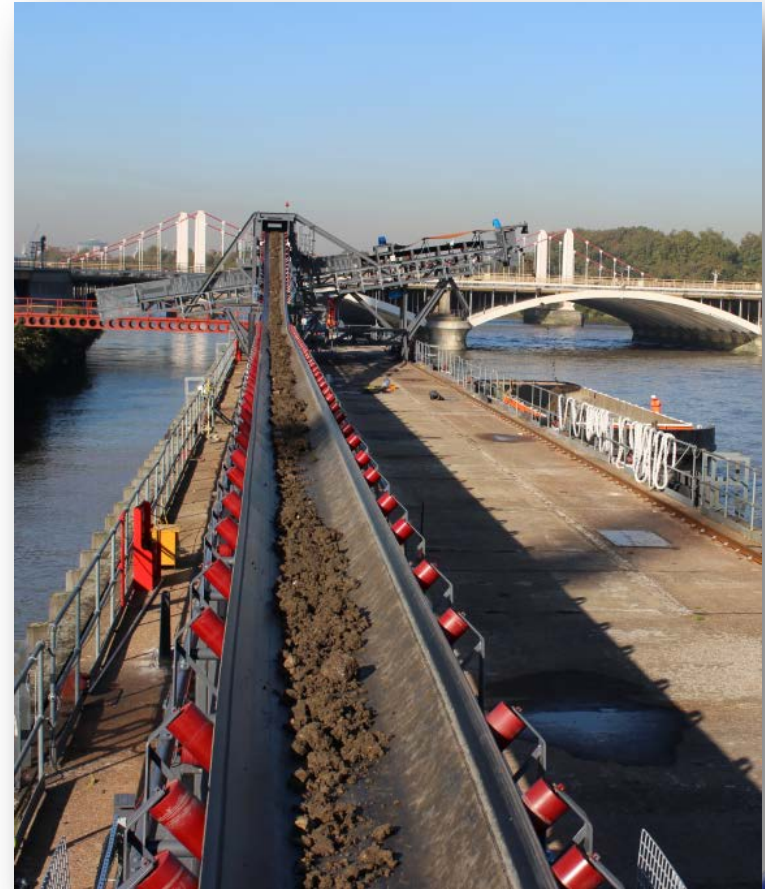
Operatives working on the capping beams at Nine Elms
June 2016



Battersea site overview June 2016

Conveyor and Barge movement

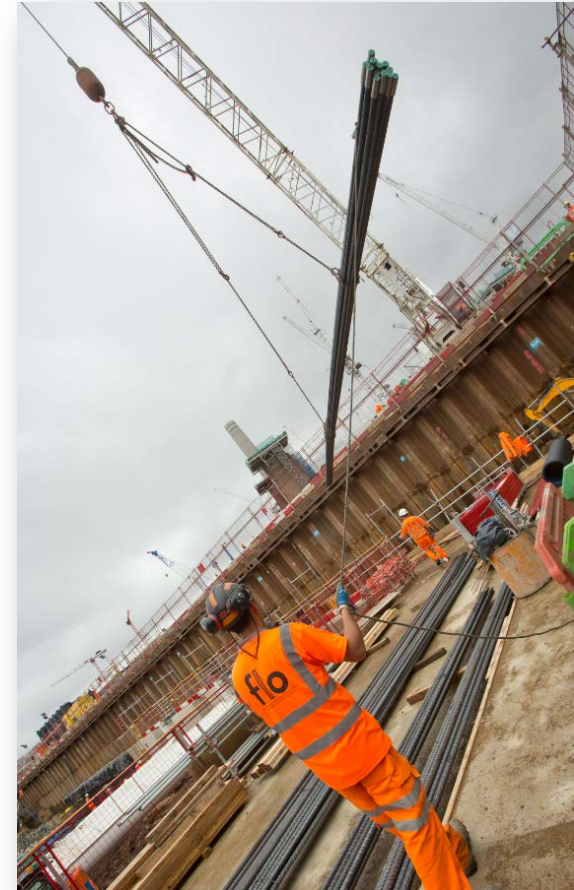
- Obstruction removal
- 90,000T spoil removed by barge (equivalent to 5,000 lorries)
- Over 100 barges loaded
- CO2 Emissions Savings: 130T
- Loading between 0700-1900
- Targets 2016 circa 180,000 tons
- Nine Elms spoil also transported by river since February 2016



Nine Elms and Battersea Look Ahead July - Sept 2016

- **NINE ELMS**
- Precast beams installation
Commencement of Excavation works to Basement 1 level
- Progressing with Capping beam construction
- Piling works completion and demobilization of heavy machinery

- **BATTERSEA**
- Continue excavation at both crossover and station boxes
- Installation of temporary steel propping
- Continue diaphragm wall and bored pile construction
- Commence capping beam construction



Environmental Update since March '16



FERROVIAL AGROMAN
LAING O'ROURKE JV

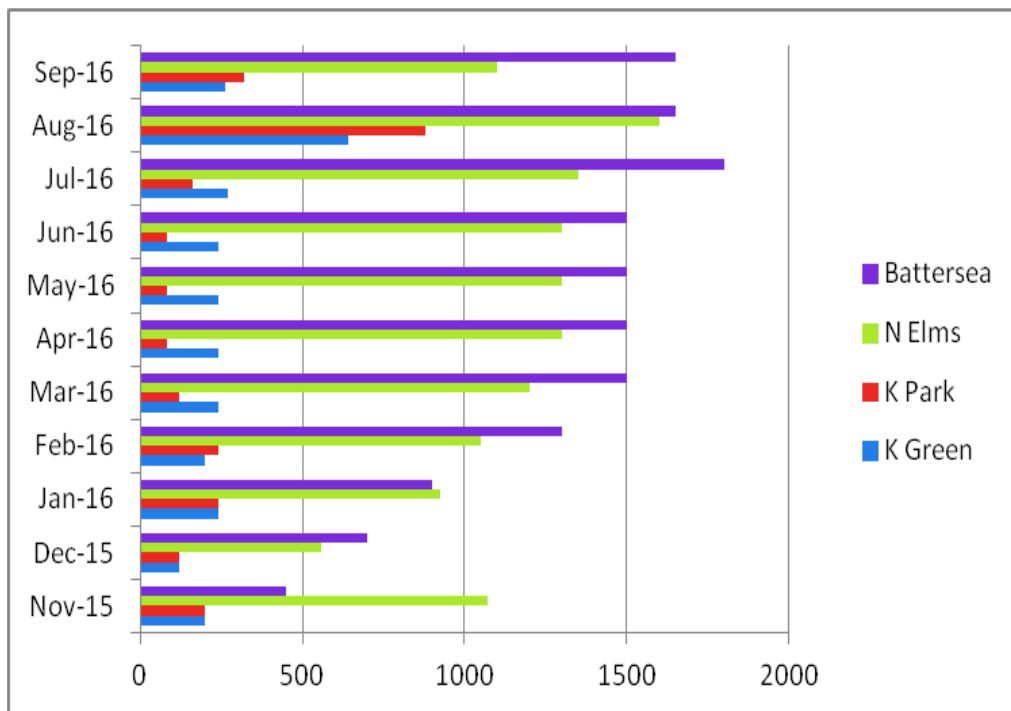
SITE	NOISE	DUST	REASON	GOOD NEWS
KG	1 since March (May)	3 since March	Breaking Piling caps	Mitigation of the dust, window cleaning in place
KP	0 noise exceeds	1 dust exceed offsite away from site		Collaboration with Bee Urban Finalist construction excellence awards
NE	Non since April	non		Team re-briefed and no further exceeds. Working with local community
BATT	2 noise exceeds offsite by Viridian apartments	9 dust triggers 1 dust slide exceeds		Collaboration with imperial College



Traffic Management / Logistics



FERROVIAL AGROMAN
LAING O'ROURKE JV



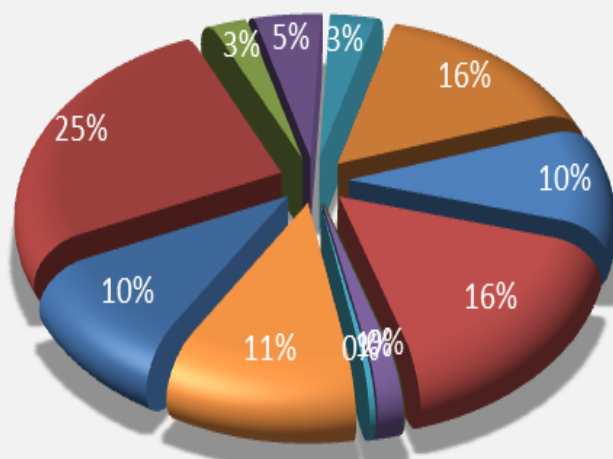
- Kennington Road traffic scheme to be introduced shortly
- FLo NLE at Montford Place & Kenningtons are the first Construction company to reach 100% vehicle safety compliance from an Audit by TfL's Works Related Road Risk. All wagons on site were 100% compliant
- Kirtling St closed for 5 weeks, this is on behalf of the NLE. Thames Water



Helpline / Complaints Stats

Jan – July 2016

Complaints by Construction Code



- Construction Strategy
- Site Management
- Working Hours
- Site Layout & Facilities
- Public Utilities
- Traffic & Lorry Management
- Highways & Public Rights of Way
- Noise & Vibrations
- Vehicle & Plant Emissions
- Dust
- Archaeology & Heritage
- Miscellaneous

ALL CONTACT 111

COMPLAINTS
(closed?) 36

ENQUIRIES 49

NON VALID 26

*358 NLE helpline contacts since start of project

Your Feedback



FERROVIAL AGROMAN
LANC O'BURKE JV

You Suggested	We Did
More information to residents	Weekly email bulleting is now delivered every Friday
More diligence and coordination for Traffic Management Issues	Open meetings between TfL surface, authorities, NLE and community
Opportunities for local businesses	LEAP group is progressing. Site canteen at Nine Elms and Battersea run by local business / Meet the buyer events
Review potential noise sources at Montford Place Logistics Base	Jet Spray equipment moved and noise mitigated where possible. Signage installed on worksite to remind workforce of obligation to respect community close by.
Keep Roads Clean	Road sweepers are working permanently Battersea Park Road Wheel washer being organised
Integrated meetings with major developments	NLE and Tideway are joining their CLG meetings. BPSDC on same date every 6 months
Engagement with Local Schools Lights causing light pollution.	Visit to three primary schools to name the NLE TBMs CRR replied and arranged for lights to be switched off when not required / investigating options



Engagement Opportunities

- CLG meetings
- One to one meetings
- Drop in sessions
- School and Youth Engagement
- Stakeholder Activities
- LEAP group meetings
- Cycling safety Events



NLE Skills and Employment

- We have over 346 days of placements in the project – majority are local residents
- 7 local workless job starts to date from across the 3 boroughs
- Advertised current Laing O'Rourke apprenticeships vacancies & Skanska Apprentice Vacancies with the borough brokerages
- Over 13 Careers Fair's attended in Southwark, Wandsworth & Lambeth over the last few months
- Ongoing engagement through best with local schools
- Signed a commitment with Construction Youth Trust to support their Foundations for the Future programme in local schools in September
- A successful ROTL (released on temporary licence) from HMP Brixton Prison has a permanent position with us following completion of placement



“Donnell Campbell from Southwark after completion of work experience in Northern Line extension project

Ways to contact us

- It is important that calls are logged through the NLE 24/7 helpdesk on 0343 222 2424
- Email nle@tfl.gov.uk
- Regular Drop In sessions
- Please visit:

<https://tfl.gov.uk/northern-line-extension>

Kennington Sites

Step Plate Junction update

Tunnelling Works



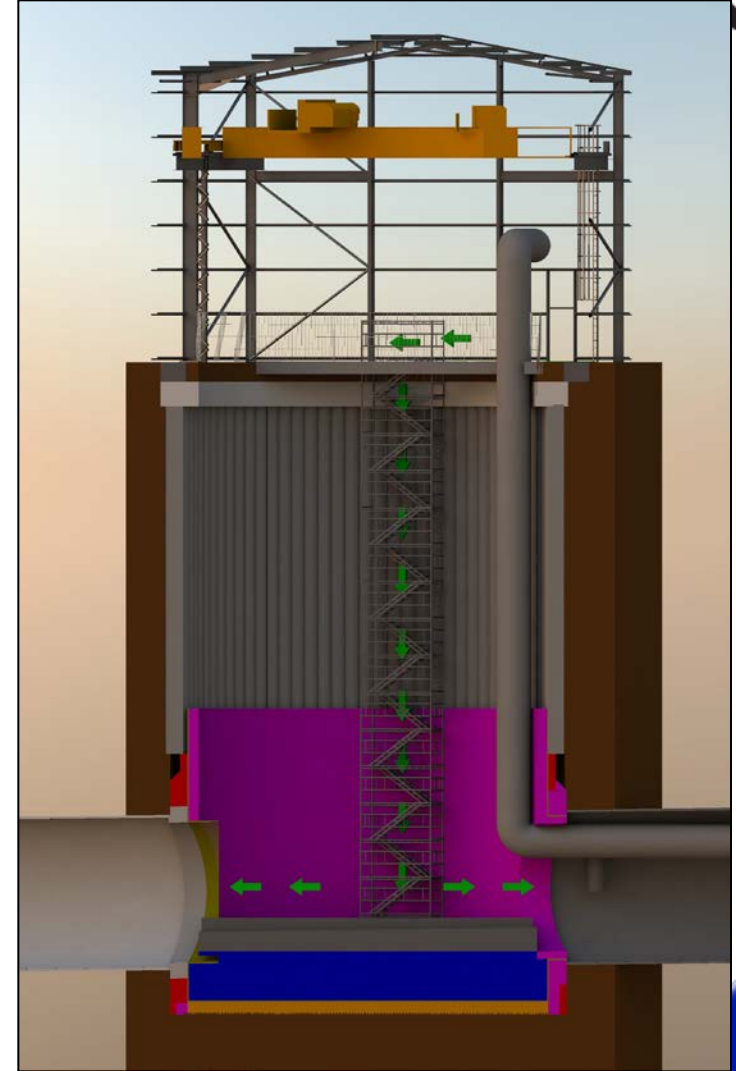
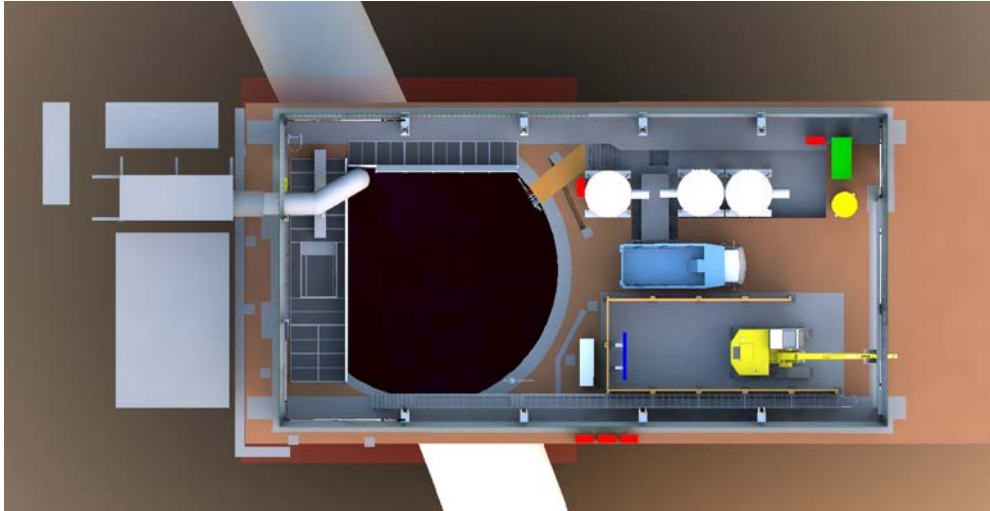
- Works will take place 24/7
- All work will be undertaken by small mechanised plant and hand tunnelling techniques.
- Things that will be monitored while we tunnel:
 - Noise
 - Vibration
 - Dust
 - Ground movement
 - Excavation profile control



Tunnelling scope of works



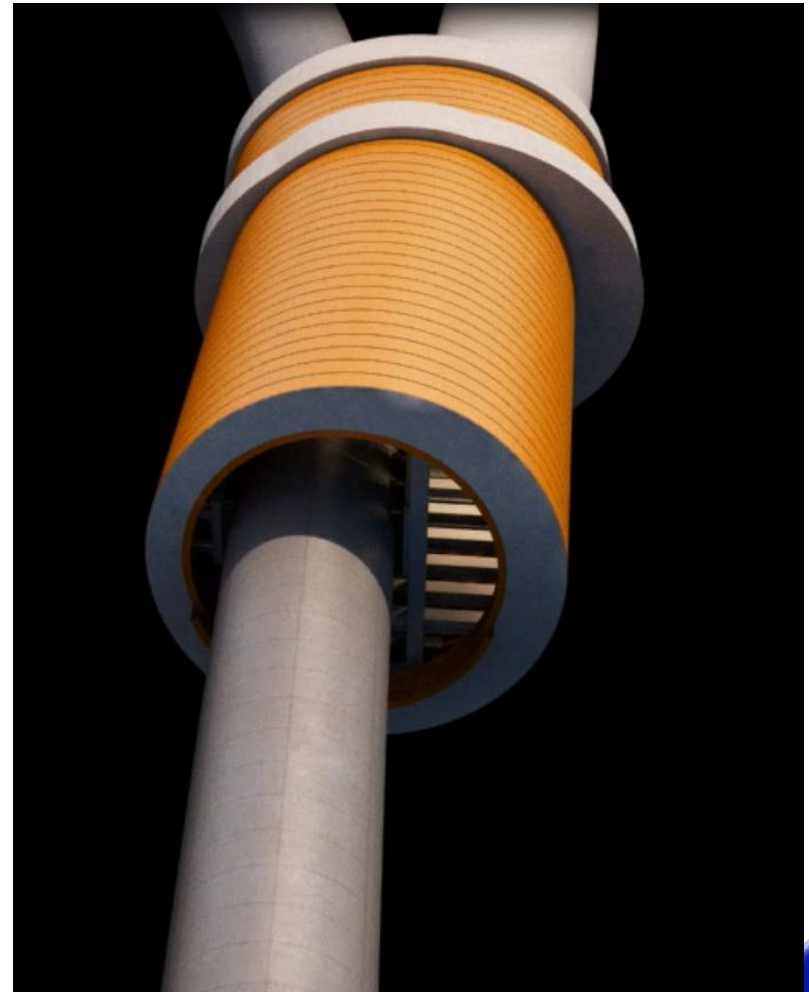
Tunnelling Set-up



Sprayed Concrete Lining Technique



Step plate junction



Step plate junction



Programme and advance rate



- Commence SCL shaft July 2016
- Commence SCL tunnelling September 2016
- Commence SPJ February 2017

