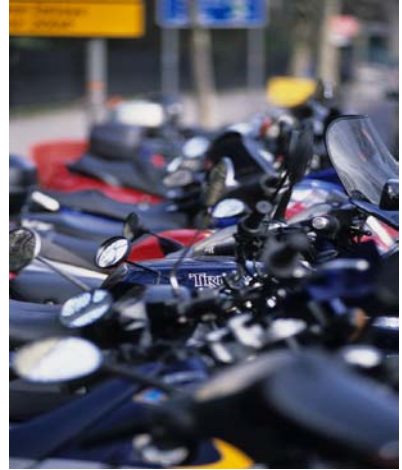


Surface Transport

2011



Collisions and casualties on London's roads



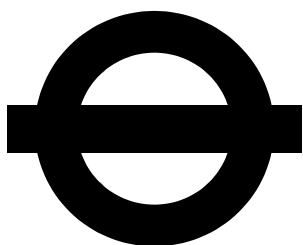
Collisions and Casualties on London's roads 2011

December 2012

This report presents information on road traffic collisions occurring on the public highway involving personal injury in the Greater London area. These are collisions reported to the Metropolitan and City of London police services during 2011 in accordance with the *Stats 19* national reporting system.

The Greater London area comprises the 32 London boroughs and the City of London. It is the largest metropolitan area in Great Britain.

Data is presented on collisions, casualties injured and types of vehicles involved. These are presented in total and also analysed by the range of factors collected about each collision as part of the *Stats 19* system. Data has been presented to show the main collision, casualty and vehicle trends in Greater London during 2011 in each of the London boroughs. These factors include severity of collision and casualty, weather and road surface conditions, junction control, class of road user, age and gender of casualty, vehicle type and vehicle manoeuvre.



Road Safety in London

Copyright
Transport for London
December 2012

Please send any enquiries or requests for collision data or further information about this work to:

Delivery Planning
Transport for London
Palestra
197 Blackfriars Road
London SE1 8NJ

Email: sandra.cowland@tfl.gov.uk or michael.pilch@tfl.gov.uk

Brief extracts of this publication may be reproduced provided the source is fully acknowledged. Proposals for larger extracts should be requested at the above address.

Contents

1 Introduction

2 Collision data 2011

3 Casualty data 2011

4 Vehicle data 2011

5 Collision costs

6 Appendices

Index of tables and figures

Introduction		Page
Fig 1.1	Total casualties 2002-2011	12
Fig 1.2	Killed or seriously injured casualties 2002-2011	12
Fig 1.3	Pedestrian casualties 2002-2011	13
Fig 1.4	Pedal cyclist casualties 2002-2011	13
Fig 1.5	Powered two wheeler casualties 2002-2011	14
Fig 1.6	Car casualties 2002-2011	14
Fig 1.7	Child casualties 2002-2011	15
Fig 1.8	Fatal casualties 1972-2011	15
Fig 1.9	Killed and seriously injured casualties 1972-2011	16
Fig 1.10	Total casualties 1972-2011	16
 Collisions		
Fig 2.1	Collisions 2007-2011 (histogram)	17
Fig 2.2	Pedestrian and non-pedestrian collisions 2007-2011 (histogram)	17
Table 2.3	Collisions by severity and borough 2011	18
Table 2.4	Collisions by severity, borough and month (33 borough tables)	19
Table 2.5	Collisions in 2011 tabulated by severity and month	35
Table 2.6	Collisions by junction detail and borough 2011	36
Fig 2.7a	Fatal collisions 2007-2011 (histogram)	37
Fig 2.7b	Serious collisions 2007-2011 (histogram)	37
Table 2.8	Collisions at junctions by junction control and borough 2011	38

		Page
Table 2.9	Collisions by weather and borough 2011	39
Table 2.10	Collisions involving a parked vehicle 2011	40
Table 2.11	Collisions by road surface condition and borough 2011	41
Fig 2.12	Collisions on a wet road surface 2007-2011 (histogram)	42
Fig 2.13	Collisions in the dark 2007-2011 (histogram)	42
Table 2.14	Collisions by road class and borough 2011	43
Table 2.15	Collisions involving a pedestrian by severity and borough 2011	44
Table 2.16	Pedestrian collisions by month and borough 2011	45
Table 2.17	Collisions involving a pedestrian crossing road by pedestrian action and borough 2011	46
Table 2.18	Collisions by day of week and time of day 2011	47
Table 2.19	Collisions by lighting condition and borough 2011	48
Table 2.20	Collisions by speed limit and borough 2011	49
Table 2.21	Collisions by highway authority and borough 2011	50
Fig 2.22	Collisions by month 2011 (histogram)	53
Fig 2.23	Collisions by day of week 2011 (histogram)	51
Fig 2.24	Collisions by hour of day 2011 (histogram)	52
Casualties		
Table 3.1	Casualties by mode of travel and severity 2011	53
Table 3.2	Casualties by mode of travel, age group and gender 2011	53
Table 3.3	Casualties 2011 by borough and mode of travel percentage change over 2010	54
Fig 3.4	Vehicle casualties by type of road user 2007-2011 (histogram)	55

		Page
Fig 3.5	Pedestrian casualties and age group 2007-2011	56
Fig 3.6	Driver casualties by type of vehicle 2007-2011 (histograms)	57
Fig 3.7	Passenger casualties by type of vehicle (histograms)	58
Table 3.8	Driver and passenger casualties by age group and type of vehicle 2011	59
Table 3.9	Casualties by severity and borough 2011	60
Table 3.10	Casualties by borough, severity and mode of travel 2011 (33 borough tables)	61
Table 3.11	Casualties by severity and mode of travel 2011	77
Table 3.12	Pedestrian casualties by severity and borough 2011	78
Table 3.13	Driver casualties by severity and borough 2011	79
Table 3.14	Passenger casualties by severity and borough 2011	80
Table 3.15	Pedestrian casualties by pedestrian action and borough 2011	81
Table 3.16	Driver casualties by vehicle type and borough 2011	83
Fig 3.17	Pedestrian casualties at or within 50 metres of a crossing 2007-2011 (histogram)	84
Table 3.18	Passenger casualties by vehicle type and borough 2011	85
Table 3.19	Driver casualties by age group and borough 2011	86
Table 3.20	Passenger casualties by age group and borough 2011	87
Table 3.21	Pedestrian casualties by age group and borough 2011	88

		Page
Fig 3.22	Driver casualties with a positive breath test 2007-2011 (histogram)	89
Table 3.23	Bus and coach casualties by age group and borough 2011	90
Table 3.24	Pedestrian casualties by associated vehicle and time of day 2011	91
Table 3.25	Casualties by casualty class, gender and borough 2011	92
Table 3.26	Casualties by highway authority and borough 2011	93
Table 3.27	Pedal cyclist casualties by age group and borough 2011	94
Table 3.28	Powered two-wheeler casualties by age group and borough 2011	95
Table 3.29	Child casualties (0-15 years) by severity, highway authority and borough 2011	96
Table 3.30	Child pedestrian casualties (0-15 years) by severity, highway authority and borough 2011	97
Table 3.31	Casualties in Greater London on the TLRN by mode of travel and borough 2011	98
Table 3.32	Casualties in Greater London on borough roads by mode of travel and borough 2011	99
Table 3.33	Casualties in Greater London on Highways Agency roads by mode of travel and borough 2011	100
Table 3.34	Casualties in Greater London on all roads by mode of travel and borough 2011	101

Vehicles		Page
Table 4.1	Vehicles involved in collisions by vehicle type and borough 2011	102
Table 4.2	Vehicles involved in collisions by age group and borough 2011	103
Table 4.3	Vehicles skidding or overturning by borough 2011	104
Table 4.4	Drivers of motor vehicles by breath test and borough 2011	105
Table 4.5	Vehicles involved in collisions by manoeuvre and borough 2011	106
Table 4.6	Vehicles involved in collisions by manoeuvre and vehicle type 2011	108
Fig 4.7	Age profile of motor vehicle drivers involved in collisions 2011 (histogram)	110
Fig 4.8	Age profile of positive breath tests 2011 (histogram)	110
 Costs		
Table 5.1	Collision costs (£'s at 2010 prices)	111

1

Introduction

1.1 Summary of general trends

In 2011, 24,443 personal injury collisions occurring on the public highway were reported to the Metropolitan and City of London police services within the Greater London area. This represents a slight increase of 1% over the 24,105 collisions recorded in 2010. These resulted in 29,257 casualties, an increase of 1% compared to the 28,889 recorded in 2010.

The previous casualty reduction targets had an end date of 2010. By this date, the number of people killed or seriously injured in road traffic collisions in the Capital had fallen by 57 per cent, the number of reported slight injuries had fallen by 33 per cent, and the number of children killed or seriously injured had fallen by 73 per cent compared to the 1994-8 baseline. This meant that 3,798 fewer people were killed or seriously injured on London's roads and 12,994 fewer slight injuries were reported in 2010 compared to the baseline years. Casualty reduction targets for cyclists and powered two-wheeler users, however, were not met. This may be largely reflected in the increased use of these modes.

While progress continued to be made in reducing killed and seriously injured casualties in 2011, 2,805 people were still killed or seriously injured on London's roads. Pedal cycle and pedestrian killed and seriously injured casualties increased by 22 per cent and 7 per cent respectively between 2010 and 2011. This is why the Mayor's revised Road Safety Action Plan prioritises action to address the issues facing London's vulnerable road users.

The long-term trend in total casualties over the last four decades has been downward, with total casualties in Greater London more than halving from the 1970s to the 2000s (see figure 1.10). The rate of decline has levelled more recently and some increases have been seen in 2010 and 2011 (see figures in section 1). Many factors may influence these increases such as changes in transport choices, behaviour and the effects of the weather.

During 2011, casualties in Greater London accounted for around 14% of those in Great Britain as a whole. KSI casualties represented 11% (source *'Reported Road Casualties Great Britain: Main Results 2011'* Department for Transport 2012).

The collisions and casualties occurred against a background in which total road traffic in London fell by 0.9% between 2009 and 2010 and the volume of traffic on London's roads over the last decade has declined by 6% overall. Whilst the trend towards falling traffic levels has been established in London for almost a decade, 2008 saw the first falls in traffic volume at the national level since the mid 1970s. This was repeated in both 2009 and 2010, with UK traffic in 2010 being 3.3 per cent lower than the high point of 2007. (source *Travel in London Report 4 Transport for London, 2011*).

The cost to the community of collisions in Greater London for the year 2011 is estimated to be around £2.3 billion at 2010 prices (see *Section 5: Collision costs*). Resources will therefore continue to need to be invested in a targeted way in future road safety programmes. This will enable activity to target those audiences and locations suffering from high levels of road casualties.

Developing a London-wide Road Safety Action Plan is one of the proposals in the Mayor's Transport Strategy. In July 2012 Transport for London issued its draft Road Safety Plan for consultation. The Plan proposes to achieve a 40 per cent reduction in the number of people killed and seriously injured measured against a 2005-9 average baseline. More details can be found on TfL's Road Safety website; www.tfl.gov.uk/roadsafety

1.2 Background

This report provides background information on personal injury road traffic collisions on the public highway occurring within the Greater London area and reported to the police. This information will assist in policy formulation for road safety, traffic and transport planning studies, the production of road safety plans, and for reference purposes.

This is the 25th annual report published by Transport for London and its predecessor organisations.

Further analysis of London's collision and casualty data can be found in the various publications produced by TfL and are available via our website; www.tfl.gov.uk/roadsafety

The tables and graphical illustrations are those most commonly requested and not an exhaustive list of possible analyses of the data. Additional tabulations of collision, casualty and vehicle factors associated with personal injury collisions may be available on request (see appendices).

Appendix 6.1 provides information about changes in the coverage and reporting of collisions that it is important to be aware of when considering very long term trends.

Casualty Trends

Please see Section 6: Appendices for important notes about comparing collision data from year to year.

Figure 1.1: Total casualties in Greater London 2002-2011

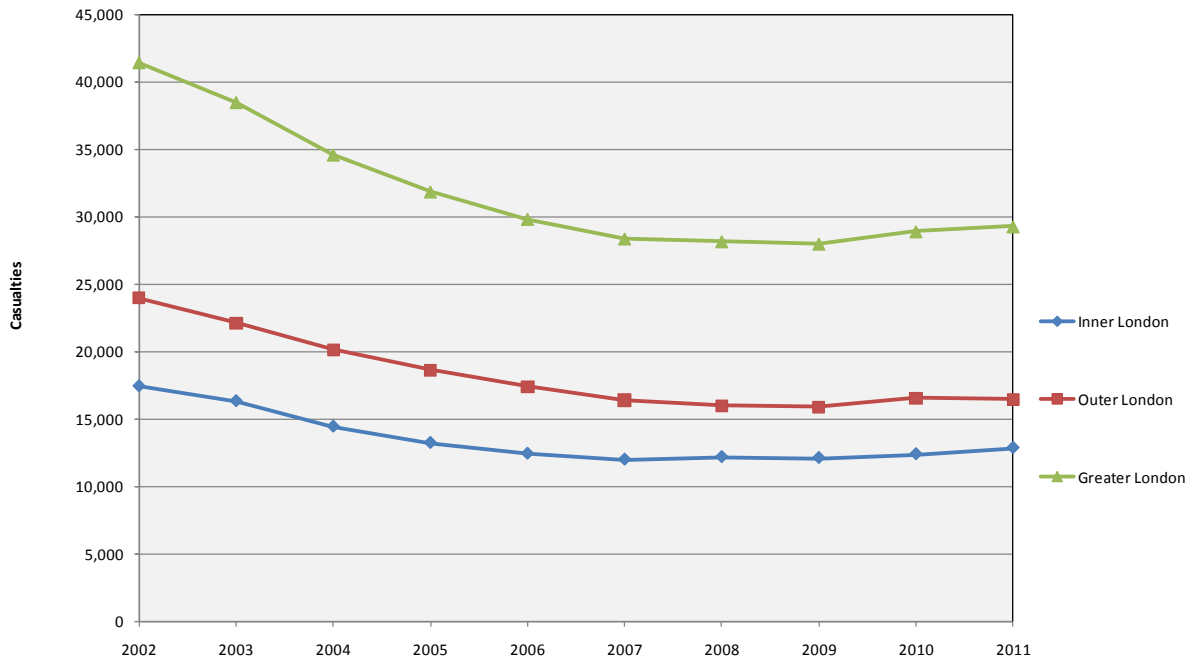


Figure 1.2: Killed and seriously injured casualties in Greater London 2002-2011

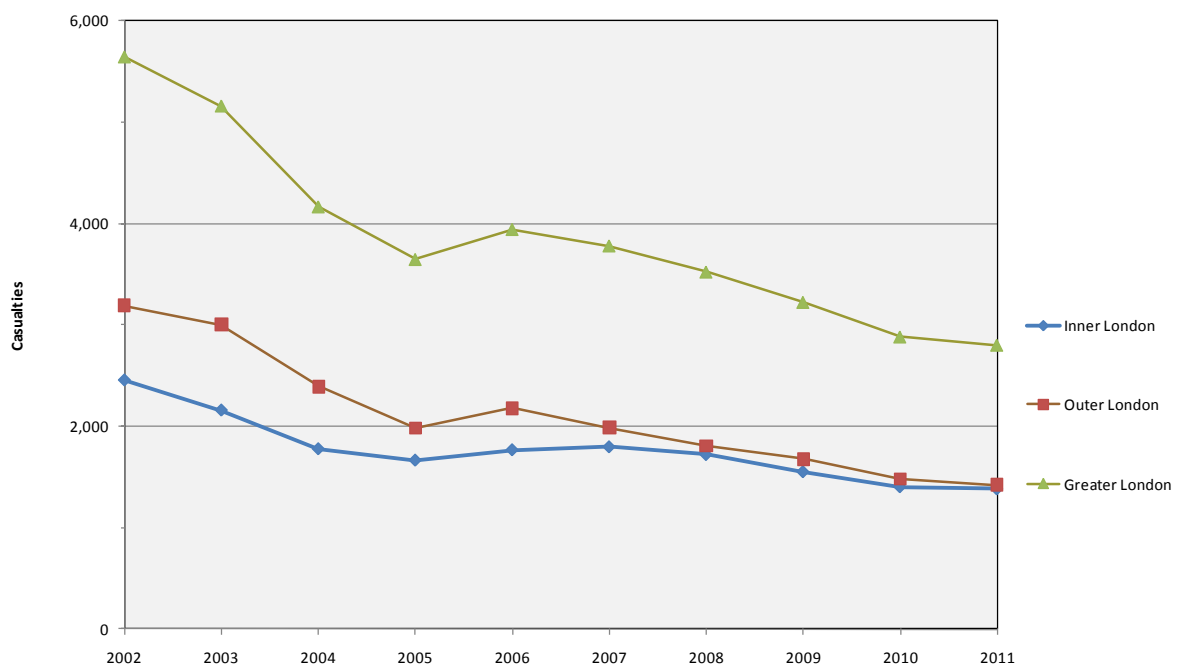


Figure 1.3 Pedestrian casualties in Greater London 2002-2011

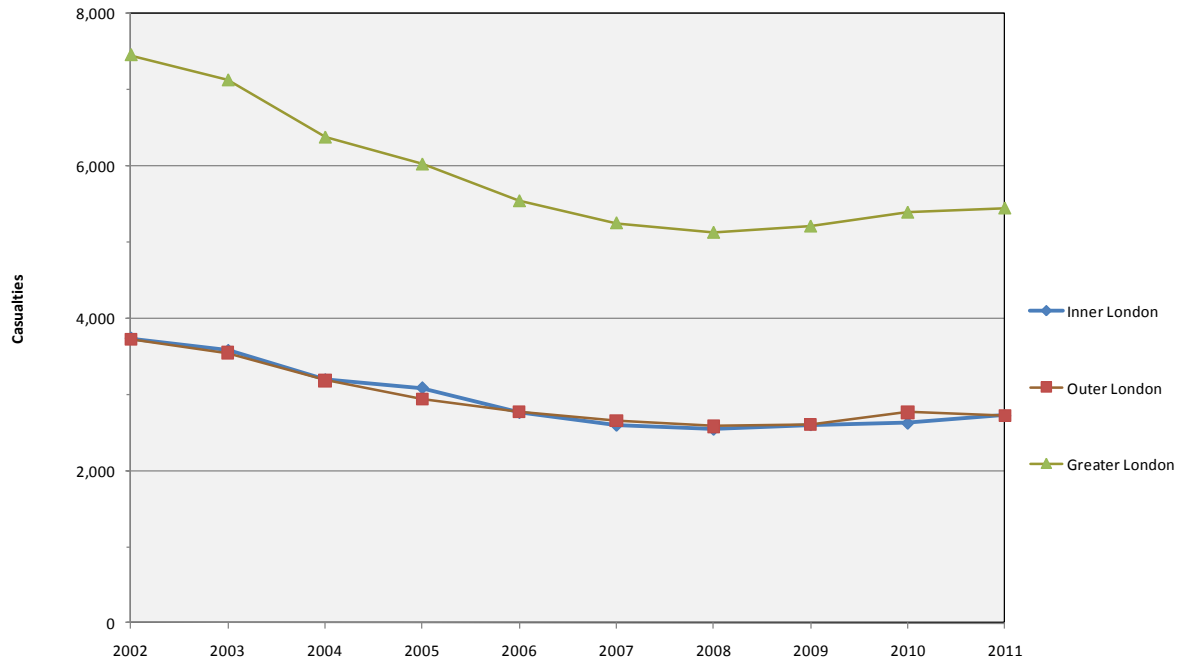


Figure 1.4: Pedal cyclist casualties in Greater London 2002-2011

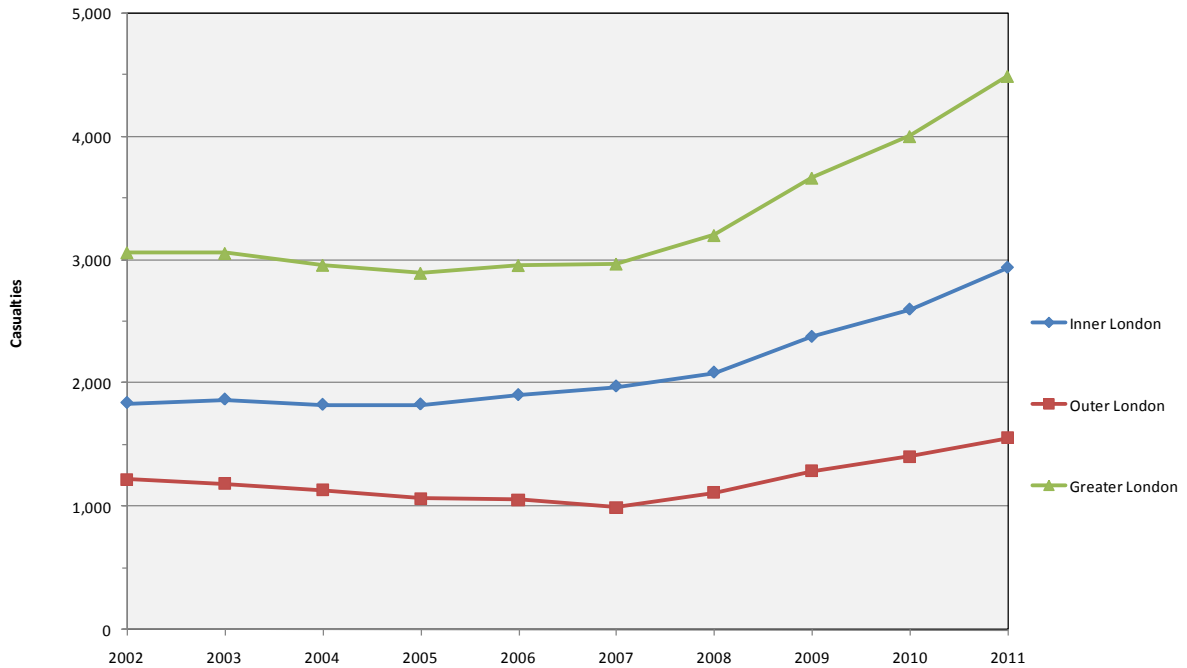


Figure 1.5: Powered two wheeler casualties in Greater London 2002-2011

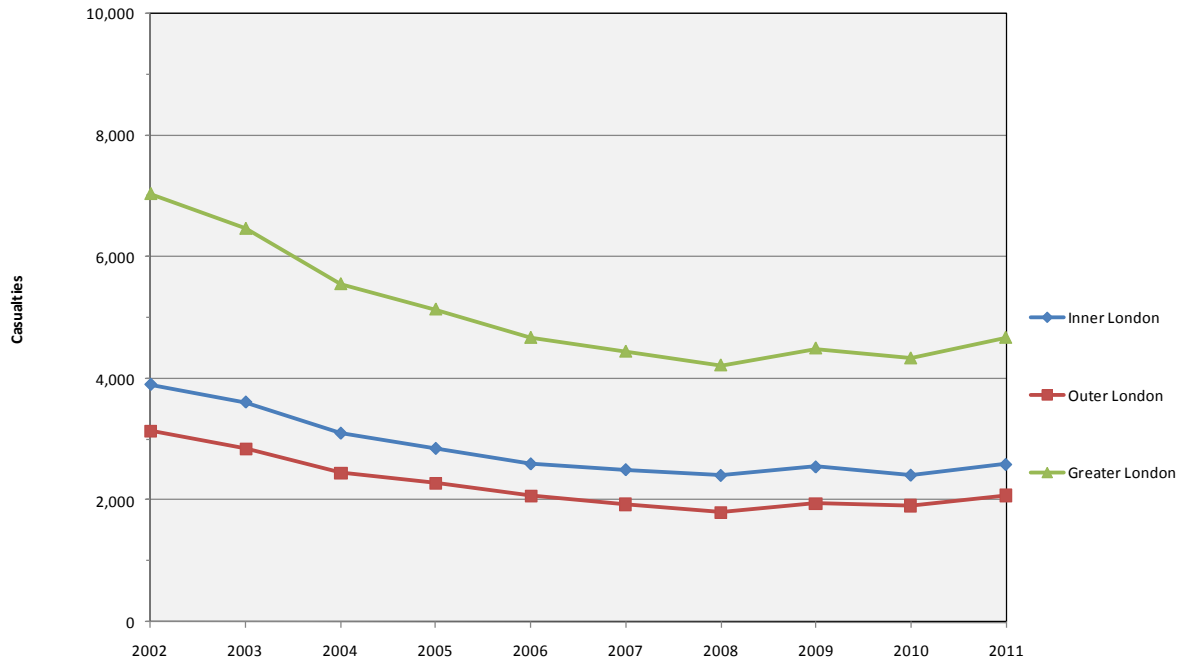


Figure 1.6: Car casualties in Greater London 2002-2011

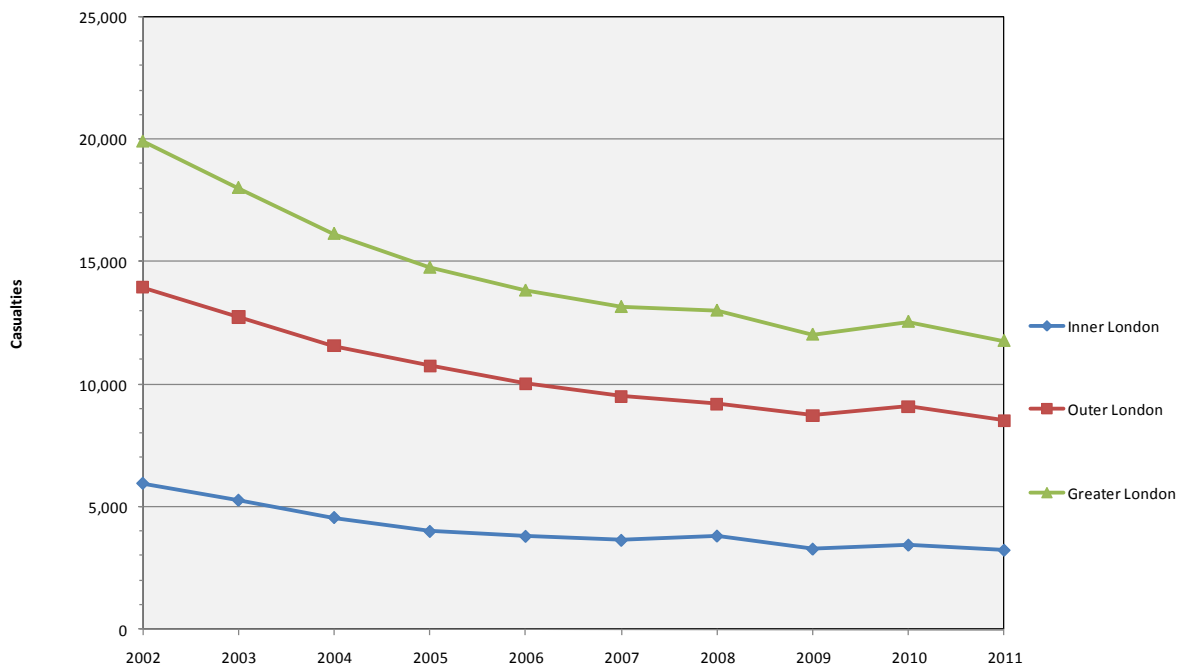


Figure 1.7: Child casualties in Greater London 2002-2011

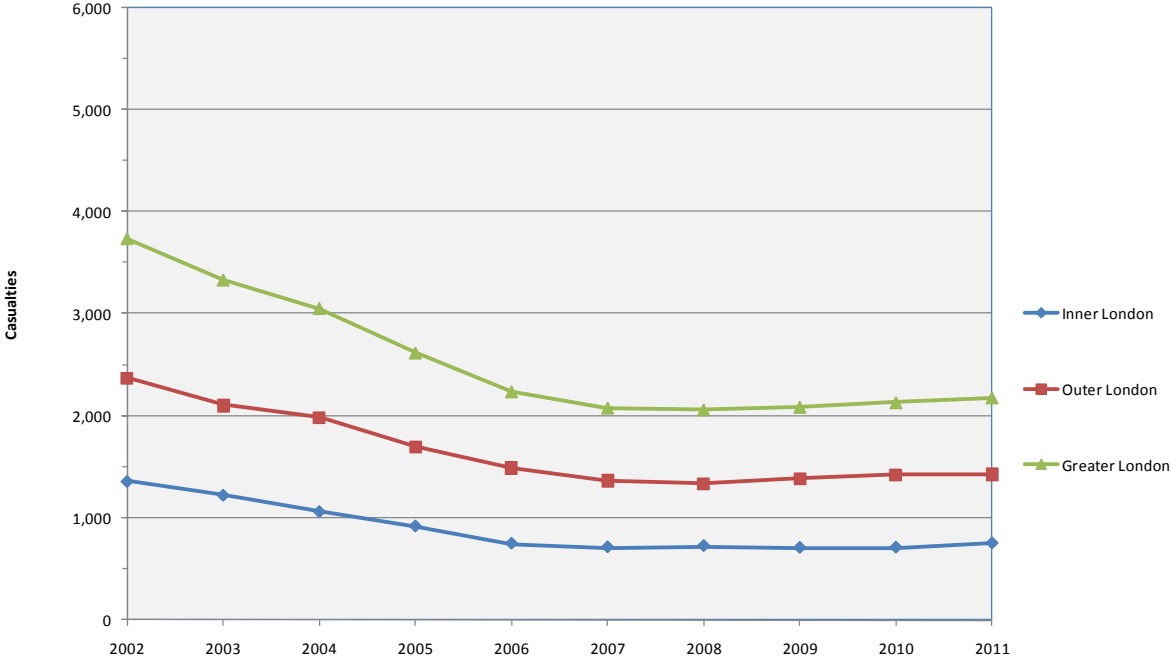


Figure 1.8: Fatal casualties in Greater London 1972-2011

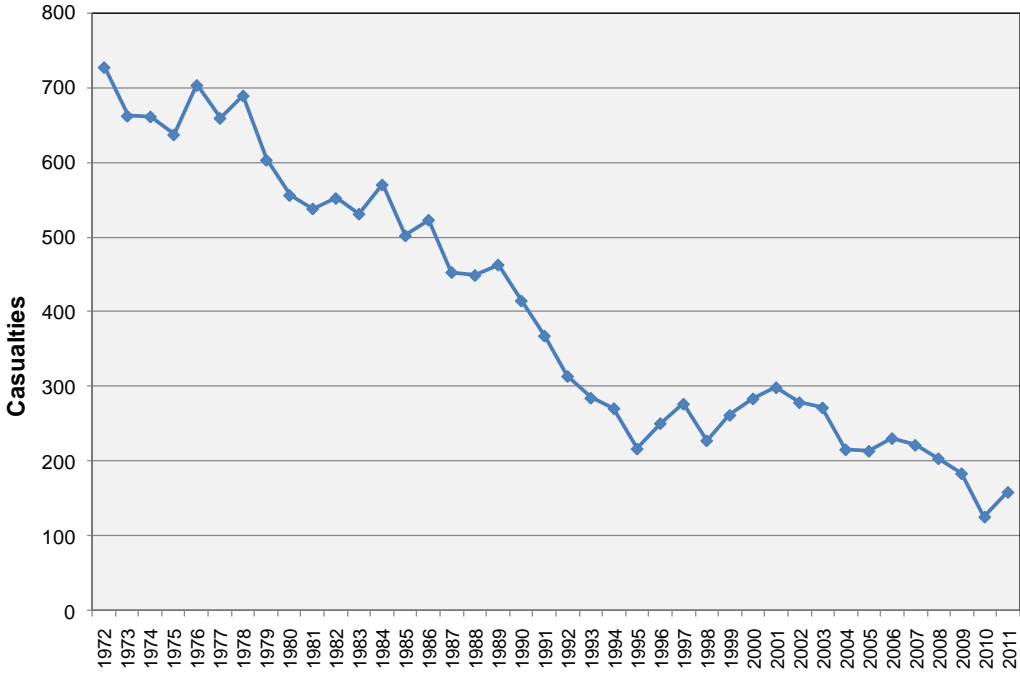


Figure 1.9: Killed and seriously injured casualties in Greater London 1972-2011

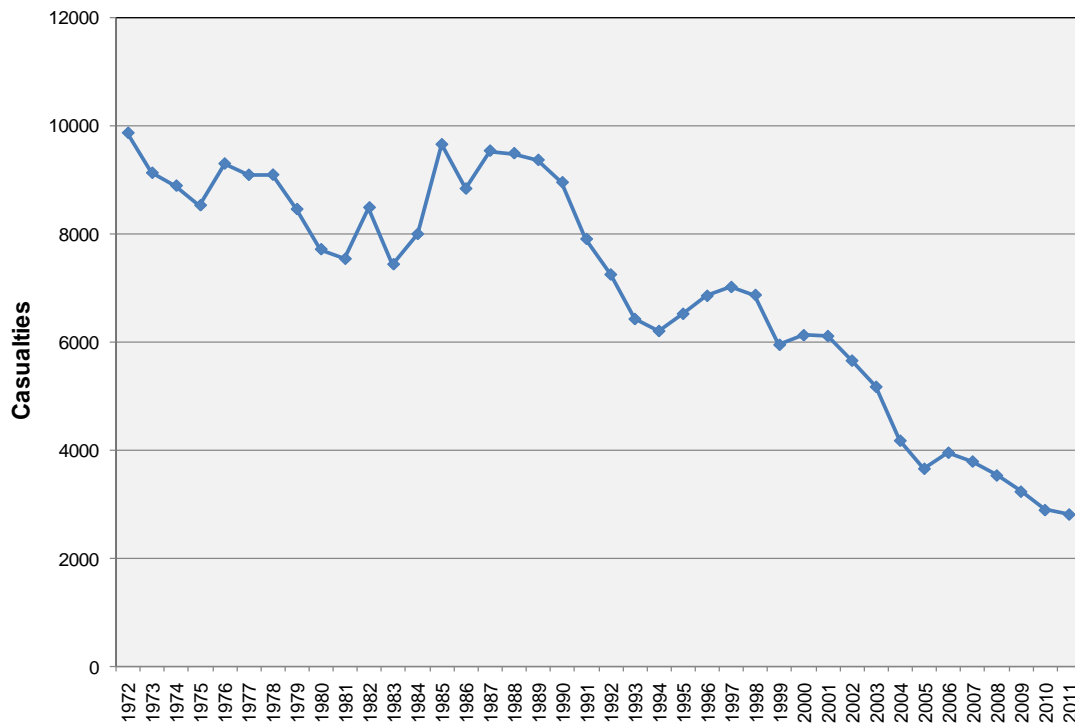


Figure 1.10: Total casualties in Greater London 1972-2011

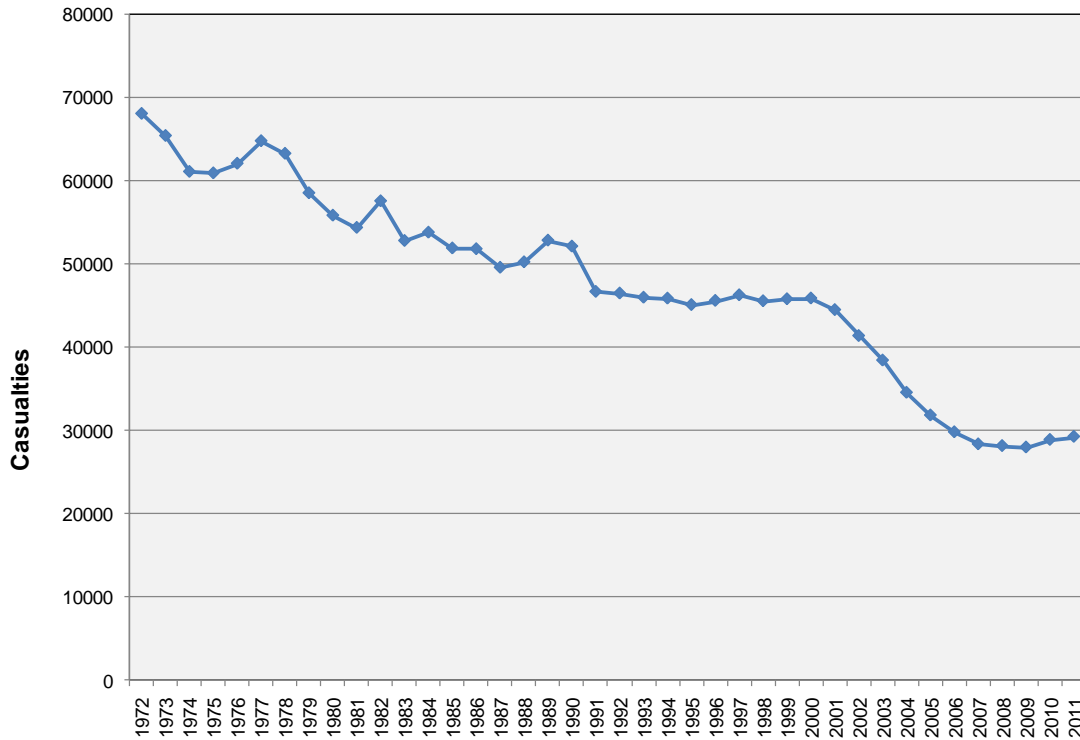


Figure 2.1: Collisions in Greater London 2007-2011

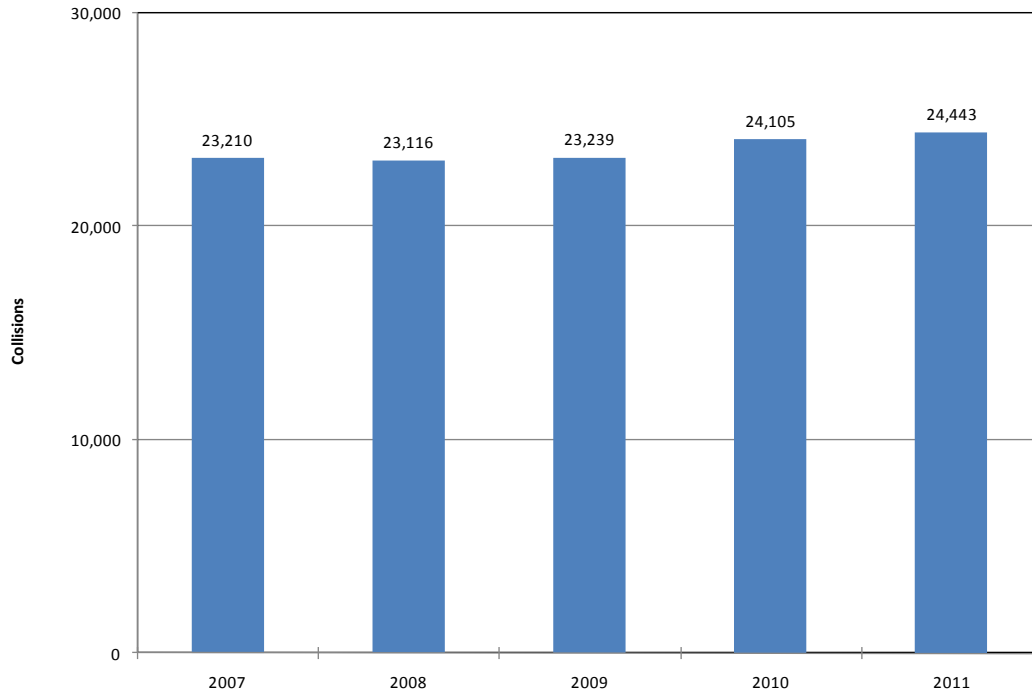


Figure 2.2: Pedestrian and non-pedestrian collisions in Greater London 2007-2011

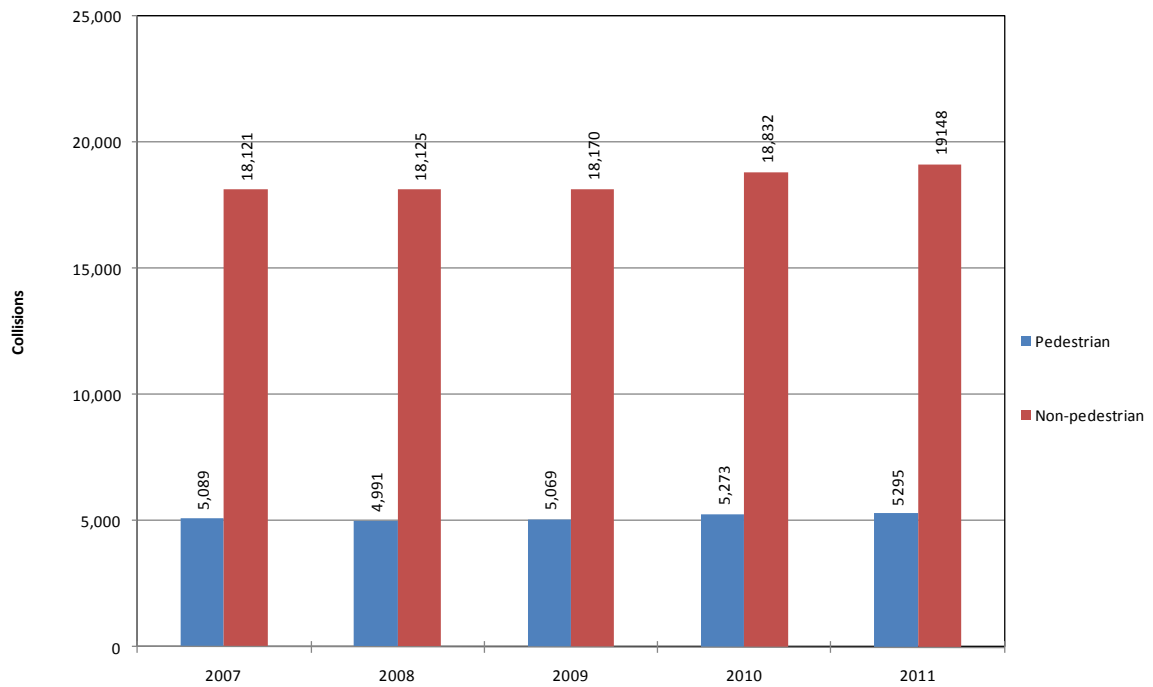


Table 2.3 Collisions in the Greater London area in 2011 tabulated by severity and borough

Borough	Fatal	Serious	Slight	Total
City of London	0	49	306	355
Westminster	6	152	1,298	1,456
Camden	6	92	747	845
Islington	4	92	757	853
Hackney	3	104	694	801
Tower Hamlets	8	95	780	883
Greenwich	2	84	662	748
Lewisham	2	99	789	890
Southwark	5	118	869	992
Lambeth	10	156	951	1,117
Wandsworth	4	105	842	951
Hammersmith and Fulham	3	72	595	670
Kensington and Chelsea	5	75	635	715
Total Inner	58	1,293	9,925	11,276
Waltham Forest	4	63	595	662
Redbridge	2	67	661	730
Havering	8	57	542	607
Barking and Dagenham	4	41	431	476
Newham	3	67	669	739
Bexley	5	43	406	454
Bromley	6	69	625	700
Croydon	9	95	862	966
Sutton	4	38	365	407
Merton	1	45	357	403
Kingston	2	42	332	376
Richmond	2	65	392	459
Hounslow	7	65	716	788
Hillingdon	5	61	684	750
Ealing	5	61	759	825
Brent	3	65	693	761
Harrow	3	33	331	367
Barnet	8	125	980	1,113
Haringey	4	72	663	739
Enfield	12	78	755	845
Total Outer	97	1,252	11,818	13,167
Greater London	155	2,545	21,743	24,443

Table 2.4 Collisions in the Greater London area in 2011 tabulated by borough, severity and month

00 City of London

Month	Fatal	Serious	Slight	Total
January	0	6	25	31
February	0	3	26	29
March	0	3	26	29
April	0	6	19	25
May	0	1	21	22
June	0	3	21	24
July	0	7	22	29
August	0	3	36	39
September	0	4	21	25
October	0	8	33	41
November	0	4	33	37
December	0	1	23	24
Total	0	49	306	355

01 Westminster

Month	Fatal	Serious	Slight	Total
January	0	6	94	100
February	0	13	101	114
March	0	6	103	109
April	0	11	100	111
May	1	19	115	135
June	1	13	112	126
July	0	12	126	138
August	1	21	94	116
September	0	16	130	146
October	0	14	121	135
November	1	11	103	115
December	2	10	99	111
Total	6	152	1,298	1,456

Table 2.4 Collisions in the Greater London area in 2011 tabulated by borough, severity and month

02 Camden

Month	Fatal	Serious	Slight	Total
January	0	5	51	56
February	0	8	60	68
March	0	10	64	74
April	1	7	84	92
May	0	9	51	60
June	0	6	64	70
July	2	2	66	70
August	0	6	50	56
September	1	11	64	76
October	1	10	85	96
November	0	9	60	69
December	1	9	48	58
Total	6	92	747	845

03 Islington

Month	Fatal	Serious	Slight	Total
January	0	6	44	50
February	1	6	53	60
March	0	9	63	72
April	1	8	54	63
May	0	12	65	77
June	1	10	74	85
July	0	8	72	80
August	1	3	73	77
September	0	9	69	78
October	0	7	62	69
November	0	9	56	65
December	0	5	72	77
Total	4	92	757	853

Table 2.4 Collisions in the Greater London area in 2011 tabulated by borough, severity and month

04 Hackney

Month	Fatal	Serious	Slight	Total
January	0	3	44	47
February	1	4	48	53
March	1	7	57	65
April	0	12	73	85
May	0	10	65	75
June	0	11	57	68
July	0	7	69	76
August	0	9	46	55
September	0	13	46	59
October	0	10	68	78
November	1	6	64	71
December	0	12	57	69
Total	3	104	694	801

05 Tower Hamlets

Month	Fatal	Serious	Slight	Total
January	0	5	43	48
February	1	6	46	53
March	1	2	71	74
April	0	7	61	68
May	0	9	71	80
June	2	10	66	78
July	0	5	94	99
August	1	13	49	63
September	1	11	72	84
October	1	10	71	82
November	1	7	70	78
December	0	10	66	76
Total	8	95	780	883

Table 2.4 Collisions in the Greater London area in 2011 tabulated by borough, severity and month

06 Greenwich

Month	Fatal	Serious	Slight	Total
January	0	6	50	56
February	0	6	44	50
March	0	8	44	52
April	1	11	68	80
May	0	8	61	69
June	0	7	61	68
July	0	7	48	55
August	0	4	42	46
September	0	7	55	62
October	0	6	74	80
November	1	8	51	60
December	0	6	64	70
Total	2	84	662	748

07 Lewisham

Month	Fatal	Serious	Slight	Total
January	0	5	47	52
February	0	6	60	66
March	1	11	70	82
April	0	7	69	76
May	0	9	70	79
June	0	11	69	80
July	0	10	74	84
August	0	10	50	60
September	0	9	76	85
October	1	5	76	82
November	0	7	66	73
December	0	9	62	71
Total	2	99	789	890

Table 2.4 Collisions in the Greater London area in 2011 tabulated by borough, severity and month

08 Southwark

Month	Fatal	Serious	Slight	Total
January	0	9	54	63
February	0	10	62	72
March	1	5	77	83
April	0	9	50	59
May	0	7	92	99
June	1	12	91	104
July	0	14	80	94
August	0	9	60	69
September	0	10	78	88
October	1	21	98	120
November	0	6	68	74
December	2	6	59	67
Total	5	118	869	992

09 Lambeth

Month	Fatal	Serious	Slight	Total
January	1	9	63	73
February	0	14	64	78
March	3	9	86	98
April	2	8	58	68
May	0	14	97	111
June	0	19	80	99
July	1	12	81	94
August	0	15	63	78
September	0	15	87	102
October	1	17	107	125
November	2	10	76	88
December	0	14	89	103
Total	10	156	951	1,117

Table 2.4 Collisions in the Greater London area in 2011 tabulated by borough, severity and month

10 Wandsworth

Month	Fatal	Serious	Slight	Total
January	0	2	39	41
February	0	7	63	70
March	0	10	81	91
April	0	11	60	71
May	1	5	84	90
June	0	14	68	82
July	0	5	84	89
August	0	8	60	68
September	1	15	68	84
October	1	5	68	74
November	1	12	97	110
December	0	11	70	81
Total	4	105	842	951

11 Hammersmith and Fulham

Month	Fatal	Serious	Slight	Total
January	0	3	39	42
February	0	3	38	41
March	0	6	54	60
April	1	3	38	42
May	0	5	59	64
June	1	5	70	76
July	0	7	50	57
August	1	6	52	59
September	0	6	55	61
October	0	7	51	58
November	0	13	46	59
December	0	8	43	51
Total	3	72	595	670

Table 2.4 Collisions in the Greater London area in 2011 tabulated by borough, severity and month

12 Kensington and Chelsea

Month	Fatal	Serious	Slight	Total
January	0	6	51	57
February	0	6	46	52
March	2	11	53	66
April	0	1	53	54
May	1	8	49	58
June	0	6	58	64
July	0	7	56	63
August	1	4	53	58
September	0	5	49	54
October	0	7	67	74
November	0	7	51	58
December	1	7	49	57
Total	5	75	635	715

13 Waltham Forest

Month	Fatal	Serious	Slight	Total
January	1	3	42	46
February	1	5	39	45
March	0	3	40	43
April	0	3	61	64
May	0	6	44	50
June	1	9	49	59
July	0	6	59	65
August	0	6	56	62
September	1	6	64	71
October	0	6	57	63
November	0	6	50	56
December	0	4	34	38
Total	4	63	595	662

Table 2.4 Collisions in the Greater London area in 2011 tabulated by borough, severity and month

14 Redbridge

Month	Fatal	Serious	Slight	Total
January	1	7	40	48
February	0	5	46	51
March	1	4	65	70
April	0	3	67	70
May	0	7	60	67
June	0	7	76	83
July	0	5	63	68
August	0	4	33	37
September	0	7	59	66
October	0	6	62	68
November	0	9	43	52
December	0	3	47	50
Total	2	67	661	730

15 Havering

Month	Fatal	Serious	Slight	Total
January	2	6	32	40
February	0	3	41	44
March	2	6	42	50
April	1	3	43	47
May	0	7	47	54
June	0	6	44	50
July	1	5	57	63
August	0	4	35	39
September	1	4	55	60
October	0	4	54	58
November	0	4	48	52
December	1	5	44	50
Total	8	57	542	607

Table 2.4 Collisions in the Greater London area in 2011 tabulated by borough, severity and month

16 Barking and Dagenham

Month	Fatal	Serious	Slight	Total
January	0	3	31	34
February	0	5	22	27
March	0	1	48	49
April	0	5	34	39
May	1	4	42	47
June	1	3	39	43
July	1	5	35	41
August	1	5	40	46
September	0	1	43	44
October	0	5	37	42
November	0	2	34	36
December	0	2	26	28
Total	4	41	431	476

17 Newham

Month	Fatal	Serious	Slight	Total
January	1	5	54	60
February	0	6	42	48
March	0	6	66	72
April	0	6	49	55
May	0	6	60	66
June	1	9	56	66
July	0	5	67	72
August	0	3	36	39
September	0	6	58	64
October	1	7	64	72
November	0	5	55	60
December	0	3	62	65
Total	3	67	669	739

Table 2.4 Collisions in the Greater London area in 2011 tabulated by borough, severity and month

18 Bexley

Month	Fatal	Serious	Slight	Total
January	0	2	30	32
February	0	4	38	42
March	0	6	33	39
April	2	7	33	42
May	2	2	37	41
June	0	0	32	32
July	1	2	31	34
August	0	4	27	31
September	0	5	26	31
October	0	5	38	43
November	0	5	36	41
December	0	1	45	46
Total	5	43	406	454

19 Bromley

Month	Fatal	Serious	Slight	Total
January	0	7	44	51
February	0	7	41	48
March	1	6	45	52
April	0	7	43	50
May	2	2	69	73
June	0	7	55	62
July	0	5	51	56
August	1	1	50	52
September	0	11	51	62
October	0	7	51	58
November	1	2	69	72
December	1	7	56	64
Total	6	69	625	700

Table 2.4 Collisions in the Greater London area in 2011 tabulated by borough, severity and month

20 Croydon

Month	Fatal	Serious	Slight	Total
January	1	4	55	60
February	1	7	60	68
March	1	10	78	89
April	1	4	59	64
May	2	7	76	85
June	1	8	81	90
July	0	7	76	83
August	0	6	74	80
September	0	8	71	79
October	0	9	74	83
November	1	16	78	95
December	1	9	80	90
Total	9	95	862	966

21 Sutton

Month	Fatal	Serious	Slight	Total
January	1	1	21	23
February	0	3	30	33
March	1	3	35	39
April	0	3	33	36
May	0	2	21	23
June	0	3	35	38
July	1	5	28	34
August	0	4	28	32
September	0	1	29	30
October	1	3	38	42
November	0	6	39	45
December	0	4	28	32
Total	4	38	365	407

Table 2.4 Collisions in the Greater London area in 2011 tabulated by borough, severity and month

22 Merton

Month	Fatal	Serious	Slight	Total
January	0	6	22	28
February	0	2	27	29
March	0	3	33	36
April	0	3	27	30
May	0	6	34	40
June	0	2	32	34
July	0	5	42	47
August	0	2	27	29
September	0	2	32	34
October	0	3	32	35
November	1	5	27	33
December	0	6	22	28
Total	1	45	357	403

23 Kingston

Month	Fatal	Serious	Slight	Total
January	0	4	19	23
February	0	4	25	29
March	0	3	28	31
April	1	4	27	32
May	0	4	24	28
June	0	1	41	42
July	1	2	35	38
August	0	2	22	24
September	0	6	30	36
October	0	4	29	33
November	0	7	26	33
December	0	1	26	27
Total	2	42	332	376

Table 2.4 Collisions in the Greater London area in 2011 tabulated by borough, severity and month

24 Richmond

Month	Fatal	Serious	Slight	Total
January	0	3	28	31
February	0	3	26	29
March	0	4	36	40
April	1	10	39	50
May	1	6	33	40
June	0	6	32	38
July	0	7	34	41
August	0	1	21	22
September	0	7	34	41
October	0	6	31	37
November	0	3	38	41
December	0	9	40	49
Total	2	65	392	459

25 Hounslow

Month	Fatal	Serious	Slight	Total
January	1	5	47	53
February	0	6	46	52
March	0	2	59	61
April	0	7	57	64
May	2	8	63	73
June	0	5	79	84
July	0	3	75	78
August	1	4	46	51
September	2	6	68	76
October	0	8	71	79
November	1	5	55	61
December	0	6	50	56
Total	7	65	716	788

Table 2.4 Collisions in the Greater London area in 2011 tabulated by borough, severity and month

26 Hillingdon

Month	Fatal	Serious	Slight	Total
January	1	4	49	54
February	0	7	59	66
March	1	5	61	67
April	0	4	56	60
May	0	5	55	60
June	0	1	54	55
July	0	6	65	71
August	1	2	45	48
September	0	7	50	57
October	1	5	77	83
November	0	4	53	57
December	1	11	60	72
Total	5	61	684	750

27 Ealing

Month	Fatal	Serious	Slight	Total
January	0	2	57	59
February	0	3	39	42
March	0	4	62	66
April	0	6	71	77
May	1	11	54	66
June	0	5	78	83
July	0	5	67	72
August	2	4	72	78
September	2	8	55	65
October	0	3	73	76
November	0	4	72	76
December	0	6	59	65
Total	5	61	759	825

Table 2.4 Collisions in the Greater London area in 2011 tabulated by borough, severity and month

28 Brent

Month	Fatal	Serious	Slight	Total
January	1	2	44	47
February	1	4	42	47
March	0	5	54	59
April	0	8	60	68
May	0	3	55	58
June	0	4	53	57
July	0	3	66	69
August	0	8	55	63
September	0	5	65	70
October	1	8	66	75
November	0	8	74	82
December	0	7	59	66
Total	3	65	693	761

29 Harrow

Month	Fatal	Serious	Slight	Total
January	1	3	26	30
February	0	0	21	21
March	0	3	25	28
April	0	3	23	26
May	1	1	31	33
June	1	2	28	31
July	0	2	27	29
August	0	4	27	31
September	0	4	43	47
October	0	3	28	31
November	0	3	24	27
December	0	5	28	33
Total	3	33	331	367

Table 2.4 Collisions in the Greater London area in 2011 tabulated by borough, severity and month

30 Barnet

Month	Fatal	Serious	Slight	Total
January	0	8	69	77
February	1	8	70	79
March	2	10	99	111
April	2	11	83	96
May	0	14	87	101
June	0	15	93	108
July	1	8	76	85
August	0	5	61	66
September	2	10	98	110
October	0	14	75	89
November	0	15	88	103
December	0	7	81	88
Total	8	125	980	1,113

31 Haringey

Month	Fatal	Serious	Slight	Total
January	0	3	45	48
February	0	7	43	50
March	1	7	60	68
April	0	5	52	57
May	0	4	66	70
June	0	4	64	68
July	2	3	54	59
August	0	7	45	52
September	1	9	46	56
October	0	8	57	65
November	0	5	64	69
December	0	10	67	77
Total	4	72	663	739

Table 2.4 Collisions in the Greater London area in 2011 tabulated by borough, severity and month

32 Enfield

Month	Fatal	Serious	Slight	Total
January	0	2	65	67
February	1	7	66	74
March	3	5	49	57
April	0	6	69	75
May	2	4	68	74
June	0	6	72	78
July	2	10	63	75
August	0	4	51	55
September	1	9	71	81
October	0	8	50	58
November	2	11	56	69
December	1	6	75	82
Total	12	78	755	845

Table 2.5 Collisions in the Greater London area in 2011 tabulated by severity and month

Greater London total

Month	Fatal	Serious	Slight	Total
January	12	151	1,464	1,627
February	8	188	1,534	1,730
March	22	193	1,867	2,082
April	14	209	1,773	1,996
May	17	225	1,926	2,168
June	11	230	1,984	2,225
July	13	202	1,993	2,208
August	11	191	1,579	1,781
September	13	253	1,918	2,184
October	10	249	2,045	2,304
November	13	234	1,870	2,117
December	11	220	1,790	2,021
Total	155	2,545	21,743	24,443

Table 2.6 Collisions in the Greater London area in 2011 tabulated by junction detail and borough

Borough	Round- about	Mini- roundabout	T or staggered	Slip road	Cross- road	Multiple	Private drive or entrance	Other	Not within 20m of junct.	Total
City of London	11	0	192	0	60	16	4	0	72	355
Westminster	43	5	666	2	462	7	18	2	251	1,456
Camden	5	0	420	1	241	13	18	2	145	845
Islington	25	3	442	1	206	13	5	1	157	853
Hackney	14	4	524	4	172	15	2	0	66	801
Tower Hamlets	38	2	582	7	182	3	2	0	67	883
Greenwich	51	16	283	8	113	8	23	0	246	748
Lewisham	24	16	433	0	145	3	40	2	227	890
Southwark	76	5	467	1	180	2	31	0	230	992
Lambeth	22	2	574	1	219	25	29	17	228	1,117
Wandsworth	18	23	480	0	171	4	57	0	198	951
Hammersmith and Fulham	54	13	362	2	110	2	20	0	107	670
Kensington and Chelsea	8	12	372	1	170	7	12	0	133	715
Total Inner	389	101	5,797	28	2,431	118	261	24	2,127	11,276
Waltham Forest	43	12	349	1	84	1	10	0	162	662
Redbridge	67	26	286	8	78	9	5	4	247	730
Havering	56	20	223	6	70	0	16	2	214	607
Barking and Dagenham	34	7	158	5	89	11	5	1	166	476
Newham	45	14	378	1	104	2	7	2	186	739
Bexley	40	21	155	1	48	1	28	4	156	454
Bromley	26	24	271	1	103	2	33	1	239	700
Croydon	50	38	426	3	132	17	69	15	216	966
Sutton	10	21	196	1	80	2	33	3	61	407
Merton	20	9	219	5	45	2	16	0	87	403
Kingston	40	8	175	7	40	6	25	0	75	376
Richmond	36	7	216	1	34	7	25	1	132	459
Hounslow	89	23	293	2	126	5	45	0	205	788
Hillingdon	76	19	310	15	93	2	23	3	209	750
Ealing	42	10	376	8	111	1	38	1	238	825
Brent	45	7	382	7	94	5	21	0	200	761
Harrow	27	14	159	0	49	0	13	1	104	367
Barnet	80	7	513	17	222	2	5	0	267	1,113
Haringey	17	1	455	1	136	1	5	0	123	739
Enfield	61	15	338	5	140	5	26	1	254	845
Total Outer	904	303	5,878	95	1,878	81	448	39	3,541	13,167
Greater London	1,293	404	11,675	123	4,309	199	709	63	5,668	24,443

Figure 2.7a: Fatal collisions 2007-2011

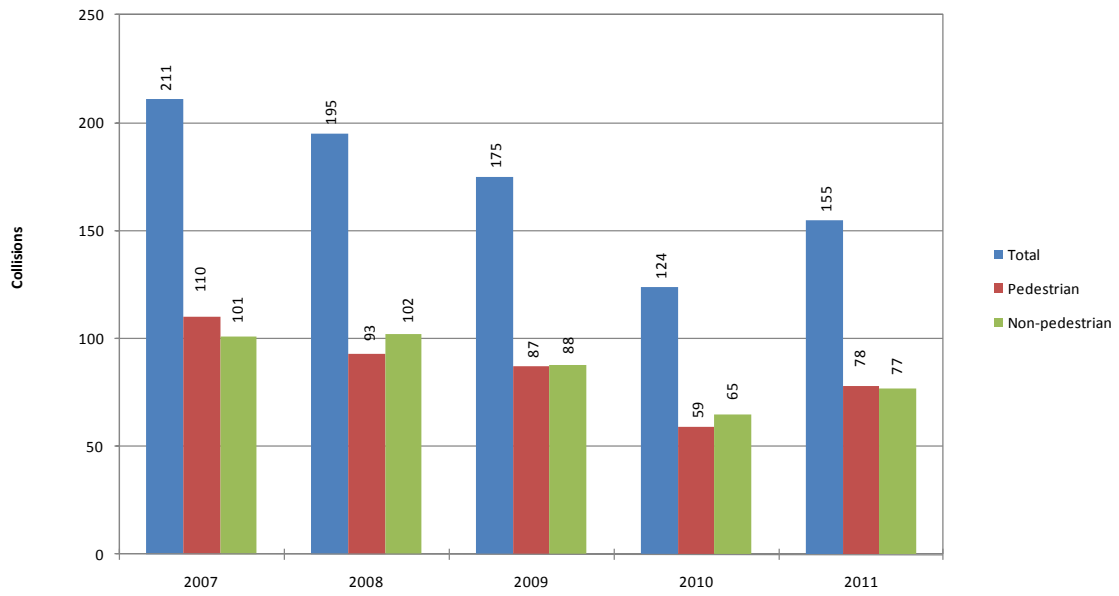


Figure 2.7b: Serious collisions 2007-2011

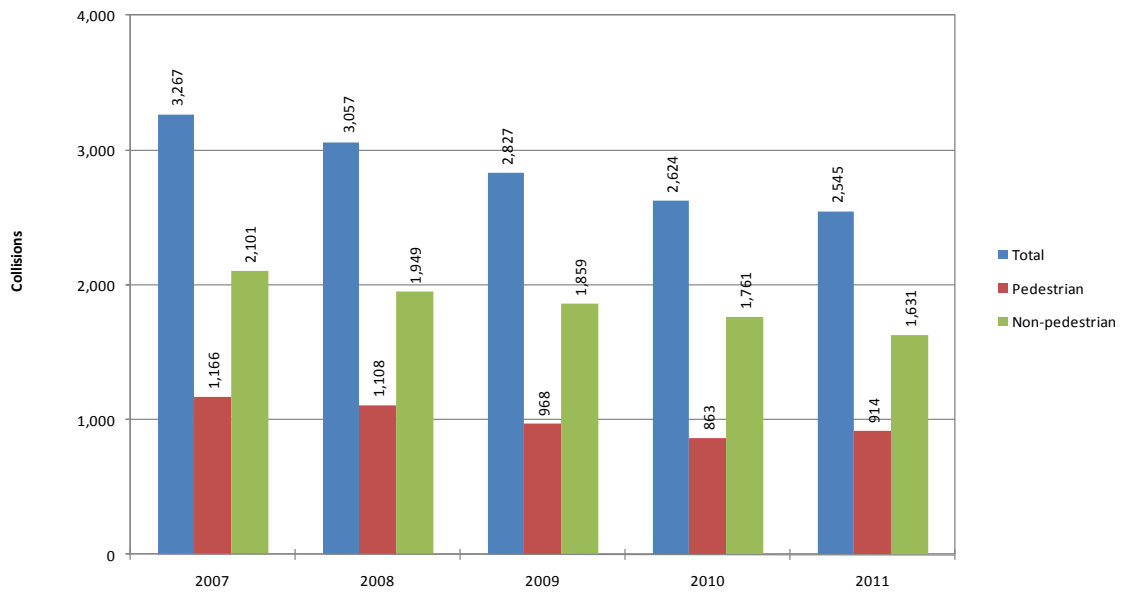


Table 2.8 Collisions at junctions in the Greater London area in 2011 tabulated by junction control and borough

Borough	Authorised person	Automatic traffic signal	Stop sign	Give Way/ Uncontrolled	Not at junction	Total
City of London	1	148	0	134	72	355
Westminster	0	556	0	649	251	1,456
Camden	2	271	2	425	145	845
Islington	1	235	1	459	157	853
Hackney	0	182	0	553	66	801
Tower Hamlets	1	205	0	610	67	883
Greenwich	0	117	1	384	246	748
Lewisham	0	142	1	520	227	890
Southwark	0	210	3	549	230	992
Lambeth	1	323	5	560	228	1,117
Wandsworth	6	168	0	579	198	951
Hammersmith and Fulham	0	116	1	446	107	670
Kensington and Chelsea	0	158	0	424	133	715
Total Inner	12	2,831	14	6,292	2,127	11,276
Waltham Forest	1	93	0	406	162	662
Redbridge	2	118	8	355	247	730
Havering	0	88	0	305	214	607
Barking and Dagenham	2	77	8	223	166	476
Newham	1	135	0	417	186	739
Bexley	0	44	1	253	156	454
Bromley	0	80	1	380	239	700
Croydon	0	133	7	610	216	966
Sutton	0	53	3	290	61	407
Merton	0	60	0	256	87	403
Kingston	0	43	0	258	75	376
Richmond	0	54	0	273	132	459
Hounslow	2	192	0	389	205	788
Hillingdon	0	93	2	446	209	750
Ealing	3	133	0	451	238	825
Brent	0	105	2	454	200	761
Harrow	0	39	0	224	104	367
Barnet	0	202	1	643	267	1,113
Haringey	0	148	1	467	123	739
Enfield	0	152	3	436	254	845
Total Outer	11	2,042	37	7,536	3,541	13,167
Greater London	23	4,873	51	13,828	5,668	24,443

Table 2.9 Collisions in the Greater London area in 2011 tabulated by weather and borough

Borough	Raining	Snowing	Fog	Other	Unknown	Total
City of London	30	0	0	319	6	355
Westminster	137	1	0	1,318	0	1,456
Camden	69	1	1	774	0	845
Islington	75	0	0	776	2	853
Hackney	60	0	0	739	2	801
Tower Hamlets	82	0	1	800	0	883
Greenwich	80	0	1	667	0	748
Lewisham	71	0	1	816	2	890
Southwark	93	0	3	894	2	992
Lambeth	112	0	1	999	5	1,117
Wandsworth	101	0	2	847	1	951
Hammersmith and Fulham	46	0	0	624	0	670
Kensington and Chelsea	57	0	0	658	0	715
Total Inner	1,013	2	10	10,231	20	11,276
Waltham Forest	61	0	1	596	4	662
Redbridge	78	0	2	648	2	730
Havering	63	2	3	534	5	607
Barking and Dagenham	52	0	0	420	4	476
Newham	58	1	2	671	7	739
Bexley	68	0	2	380	4	454
Bromley	77	0	1	621	1	700
Croydon	121	2	1	823	19	966
Sutton	54	0	1	343	9	407
Merton	26	0	1	376	0	403
Kingston	32	0	0	344	0	376
Richmond	36	0	0	423	0	459
Hounslow	80	0	2	706	0	788
Hillingdon	79	2	2	667	0	750
Ealing	84	0	2	739	0	825
Brent	66	0	2	693	0	761
Harrow	45	0	0	322	0	367
Barnet	119	0	1	990	3	1,113
Haringey	69	0	0	670	0	739
Enfield	71	1	1	772	0	845
Total Outer	1,339	8	24	11,738	58	13,167
Greater London	2,352	10	34	21,969	78	24,443

Table 2.10 Collisions involving a parked vehicle in the Greater London area in 2011 tabulated by severity and borough

Borough	Fatal	Serious	Slight	Total
City of London	0	2	11	13
Westminster	0	6	64	70
Camden	1	5	54	60
Islington	2	10	36	48
Hackney	0	5	45	50
Tower Hamlets	0	7	41	48
Greenwich	0	5	28	33
Lewisham	0	4	38	42
Southwark	0	5	42	47
Lambeth	0	8	31	39
Wandsworth	0	5	29	34
Hammersmith and Fulham	1	2	41	44
Kensington and Chelsea	0	3	48	51
Total Inner	4	67	508	579
Waltham Forest	1	6	35	42
Redbridge	0	0	39	39
Havering	1	4	18	23
Barking and Dagenham	1	4	20	25
Newham	0	4	23	27
Bexley	0	8	30	38
Bromley	0	4	39	43
Croydon	2	8	52	62
Sutton	0	3	21	24
Merton	0	2	30	32
Kingston	0	3	19	22
Richmond	0	7	31	38
Hounslow	0	2	22	24
Hillingdon	0	2	34	36
Ealing	0	1	36	37
Brent	0	4	48	52
Harrow	0	1	27	28
Barnet	1	7	66	74
Haringey	0	2	38	40
Enfield	0	2	38	40
Total Outer	6	74	666	746
Greater London	10	141	1,174	1,325

Table 2.11 Collisions in the Greater London area in 2011 tabulated by road surface condition and borough

Borough	Dry	Wet/Damp	Snow	Frost/Ice	Flood	Oil/diesel¹	Mud¹	Total
City of London	304	47	0	4	0	0	0	355
Westminster	1,240	216	0	0	0	1	0	1,456
Camden	730	113	1	1	0	0	1	845
Islington	730	123	0	0	0	0	1	853
Hackney	682	117	0	0	2	0	0	801
Tower Hamlets	741	141	0	0	1	5	0	883
Greenwich	611	137	0	0	0	0	0	748
Lewisham	739	151	0	0	0	2	0	890
Southwark	826	166	0	0	0	1	0	992
Lambeth	914	201	0	2	0	3	0	1,117
Wandsworth	779	171	0	1	0	1	0	951
Hammersmith and Fulham	594	76	0	0	0	0	0	670
Kensington and Chelsea	613	102	0	0	0	1	0	715
Total Inner	9,503	1,761	1	8	3	14	2	11,276
Waltham Forest	547	112	0	3	0	0	0	662
Redbridge	612	117	0	1	0	1	0	730
Havering	480	124	1	2	0	1	0	607
Barking and Dagenham	409	66	0	1	0	0	0	476
Newham	637	101	0	1	0	0	1	739
Bexley	342	111	0	1	0	3	0	454
Bromley	546	152	0	2	0	0	1	700
Croydon	774	189	2	1	0	2	0	966
Sutton	320	87	0	0	0	2	0	407
Merton	354	49	0	0	0	1	0	403
Kingston	322	52	0	2	0	3	0	376
Richmond	400	58	0	1	0	0	0	459
Hounslow	630	153	0	4	1	1	0	788
Hillingdon	603	139	1	7	0	0	0	750
Ealing	676	145	0	4	0	0	0	825
Brent	634	119	0	8	0	1	0	761
Harrow	289	77	0	1	0	0	0	367
Barnet	912	196	1	4	0	4	1	1,113
Haringey	612	126	0	1	0	1	0	739
Enfield	701	143	0	1	0	1	0	845
Total Outer	10,800	2,316	5	45	1	21	3	13,167
Greater London	20,303	4,077	6	53	4	35	5	24,443

¹ Note that data for Oil/Diesel and Mud are obtained from the 'Special conditions at site' variable and consequently are not included in the Total column to avoid double counting of collisions.

Figure 2.12: Collisions on a wet road surface 2007-2011

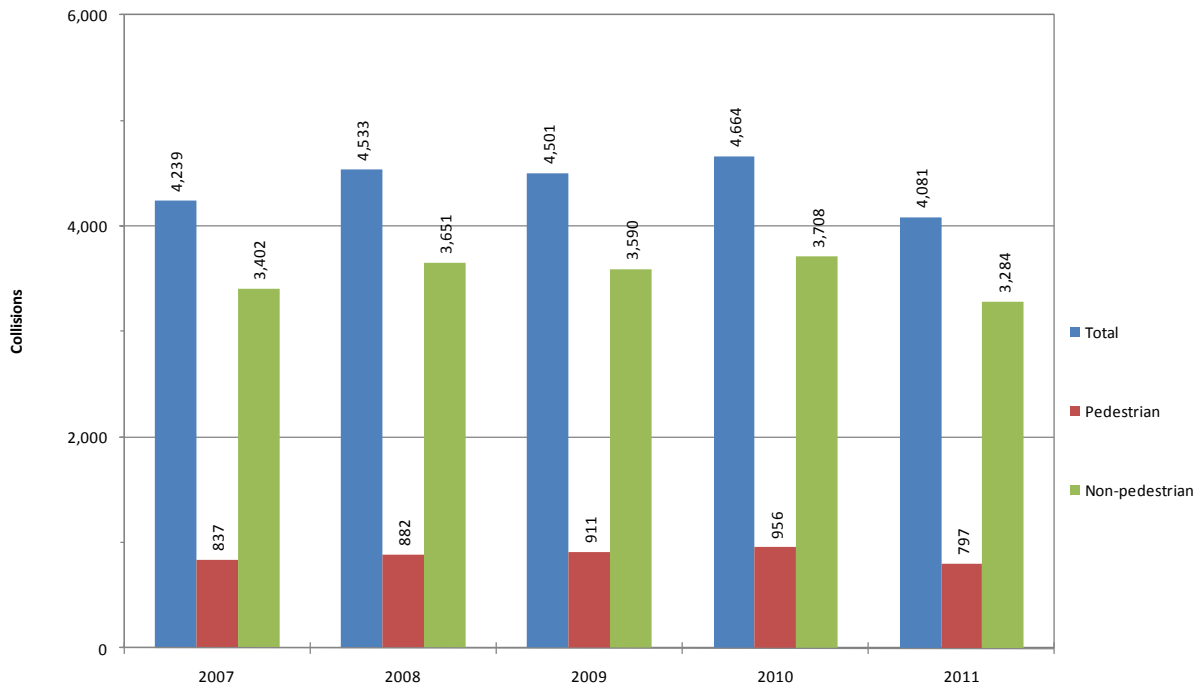


Figure 2.13: Collisions in the dark 2007-2011

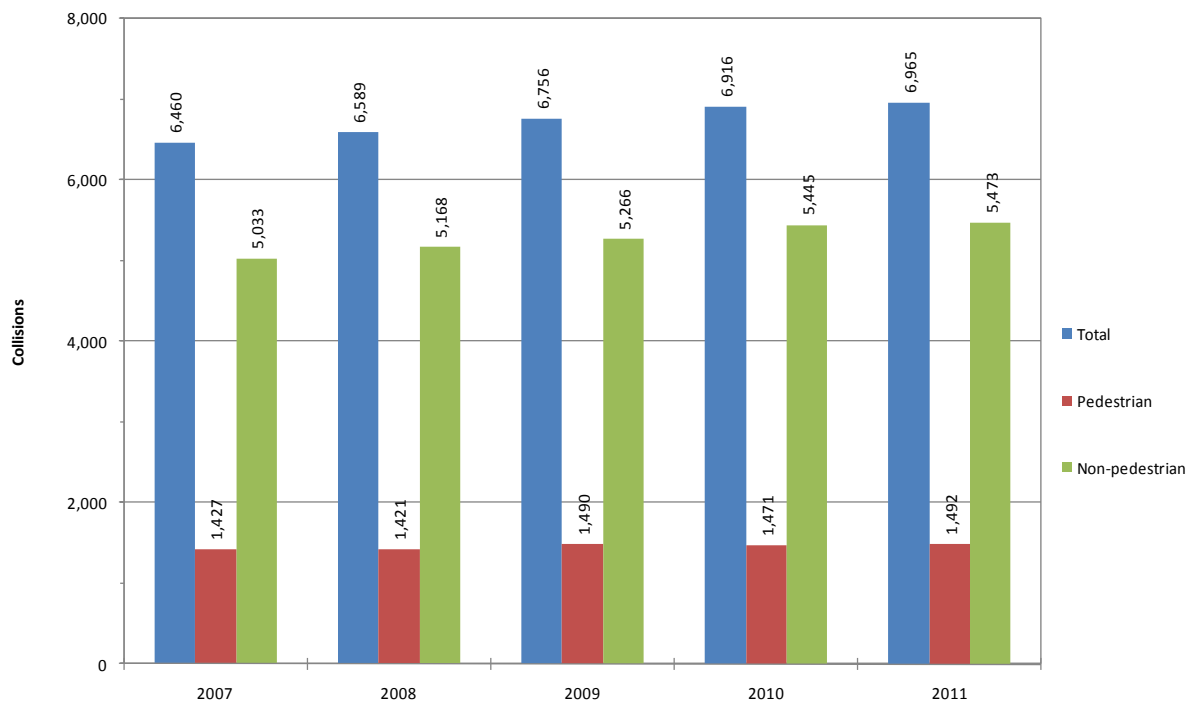


Table 2.14 Collisions in the Greater London area in 2011 tabulated by road class and borough

Borough	Motorway	A	B	C	Unclassified	Total
City of London	0	210	8	133	4	355
Westminster	0	969	145	163	179	1,456
Camden	0	548	117	93	87	845
Islington	0	686	32	61	74	853
Hackney	0	535	61	114	91	801
Tower Hamlets	0	584	115	61	123	883
Greenwich	0	514	37	68	129	748
Lewisham	0	584	96	70	140	890
Southwark	0	737	55	68	132	992
Lambeth	0	885	62	72	98	1,117
Wandsworth	0	695	57	78	121	951
Hammersmith and Fulham	0	474	66	36	94	670
Kensington and Chelsea	0	502	65	70	78	715
Total Inner	0	7,923	916	1,087	1,350	11,276
Waltham Forest	0	441	84	49	88	662
Redbridge	4	464	29	106	127	730
Havering	43	226	54	183	101	607
Barking and Dagenham	0	295	7	88	86	476
Newham	0	508	60	44	127	739
Bexley	0	268	19	90	77	454
Bromley	0	374	66	95	165	700
Croydon	0	545	119	125	177	966
Sutton	0	178	101	38	90	407
Merton	0	264	54	47	38	403
Kingston	0	257	26	48	45	376
Richmond	0	338	48	31	42	459
Hounslow	38	534	43	65	108	788
Hillingdon	53	342	54	172	129	750
Ealing	0	493	94	115	123	825
Brent	0	476	52	98	135	761
Harrow	0	176	21	111	59	367
Barnet	16	747	60	94	196	1,113
Haringey	0	487	81	58	113	739
Enfield	42	523	29	101	150	845
Total Outer	196	7,936	1,101	1,758	2,176	13,167
Greater London	196	15,859	2,017	2,845	3,526	24,443

Note: Road Class is allocated according to the category of the road at which the collisions occurred. For collisions occurring at a junction where the collision cannot be clearly allocated to a particular road the class of the major road is chosen.

Table 2.15 Collisions involving a pedestrian in the Greater London area in 2011 tabulated by severity and borough

Borough	Fatal	Serious	Slight	Total
City of London	0	15	78	93
Westminster	4	76	358	438
Camden	3	33	185	221
Islington	2	27	164	193
Hackney	2	38	153	193
Tower Hamlets	3	36	149	188
Greenwich	0	35	117	152
Lewisham	1	39	156	196
Southwark	3	33	161	197
Lambeth	8	49	183	240
Wandsworth	1	36	147	184
Hammersmith and Fulham	1	27	122	150
Kensington and Chelsea	4	34	159	197
Total Inner	32	478	2,132	2,642
Waltham Forest	2	18	111	131
Redbridge	0	24	116	140
Havering	5	17	77	99
Barking and Dagenham	0	7	69	76
Newham	2	25	183	210
Bexley	2	13	72	87
Bromley	2	22	120	144
Croydon	7	35	157	199
Sutton	2	8	50	60
Merton	0	20	63	83
Kingston	0	12	51	63
Richmond	1	18	67	86
Hounslow	3	28	104	135
Hillingdon	3	21	103	127
Ealing	1	25	169	195
Brent	2	26	137	165
Harrow	1	15	76	92
Barnet	5	42	154	201
Haringey	2	37	144	183
Enfield	6	23	148	177
Total Outer	46	436	2,171	2,653
Greater London	78	914	4,303	5,295

Table 2.16 Pedestrian collisions in the Greater London area in 2011 tabulated by month and borough

Borough	Jan.	Feb.	March	April	May	June	July	August	Sept.	Oct.	Nov.	Dec.	Total
City of London	8	3	9	5	6	5	9	4	7	16	15	6	93
Westminster	31	41	35	27	30	41	42	34	42	38	39	38	438
Camden	20	21	17	19	10	14	9	18	26	27	20	20	221
Islington	19	14	18	14	13	18	21	12	18	12	16	18	193
Hackney	10	22	20	20	15	20	16	13	15	11	13	18	193
Tower Hamlets	11	16	19	14	25	14	17	13	18	11	12	18	188
Greenwich	10	8	13	19	18	12	12	5	15	13	11	16	152
Lewisham	12	15	28	14	16	18	13	9	13	21	18	19	196
Southwark	12	17	16	15	15	17	20	11	18	28	12	16	197
Lambeth	23	15	24	18	21	19	16	13	17	32	12	30	240
Wandsworth	4	18	25	10	18	19	12	16	16	11	19	16	184
Hammersmith and Fulham	14	7	15	9	14	23	12	13	6	16	11	10	150
Kensington and Chelsea	18	13	14	11	15	15	16	14	14	26	16	25	197
Total Inner	192	210	253	195	216	235	215	175	225	262	214	250	2,642
Waltham Forest	12	10	9	15	9	10	14	10	14	8	10	10	131
Redbridge	9	14	18	15	9	17	11	5	9	12	10	11	140
Havering	8	6	6	4	8	4	14	8	12	8	10	11	99
Barking and Dagenham	4	6	6	7	8	8	4	6	8	6	9	4	76
Newham	18	14	25	12	13	20	24	8	23	21	16	16	210
Bexley	9	9	14	5	5	7	3	7	7	10	7	4	87
Bromley	11	9	15	9	12	7	8	9	17	10	19	18	144
Croydon	19	15	21	20	22	12	9	12	11	9	22	27	199
Sutton	2	5	7	9	2	4	5	3	4	7	6	6	60
Merton	8	5	10	4	9	11	8	4	7	7	4	6	83
Kingston	5	4	7	6	8	4	5	2	11	2	3	6	63
Richmond	5	8	5	6	8	9	11	2	7	7	5	13	86
Hounslow	13	4	11	12	16	15	7	8	17	13	9	10	135
Hillingdon	7	15	12	6	14	7	9	4	10	20	9	14	127
Ealing	15	13	15	10	18	24	17	19	12	16	19	17	195
Brent	9	12	17	19	13	11	14	12	14	12	18	14	165
Harrow	12	6	6	8	7	8	5	6	10	9	7	8	92
Barnet	20	19	21	17	13	19	8	11	15	18	19	21	201
Haringey	15	14	17	14	13	14	14	10	10	19	18	25	183
Enfield	15	15	15	19	10	20	18	8	13	13	15	16	177
Total Outer	216	203	257	217	217	231	208	154	231	227	235	257	2,653
Greater London	408	413	510	412	433	466	423	329	456	489	449	507	5,295

Table 2.17 Collisions involving a pedestrian crossing the road in the Greater London area in 2011 tabulated by pedestrian action and borough

Borough	Crossing road at pedestrian crossing	Crossing within 50m of pedestrian crossing	Crossing road elsewhere	Total
City of London	19	24	33	76
Westminster	128	79	162	369
Camden	63	47	75	185
Islington	61	46	74	181
Hackney	26	47	94	167
Tower Hamlets	32	35	92	159
Greenwich	24	23	77	124
Lewisham	34	24	106	164
Southwark	29	40	101	170
Lambeth	51	49	105	205
Wandsworth	36	34	82	152
Hammersmith and Fulham	41	29	60	130
Kensington and Chelsea	47	34	80	161
Total Inner	591	511	1,141	2,243
Waltham Forest	27	18	70	115
Redbridge	22	22	68	112
Havering	10	11	55	76
Barking and Dagenham	14	7	38	59
Newham	43	32	109	184
Bexley	9	8	44	61
Bromley	22	18	72	112
Croydon	29	27	100	156
Sutton	6	9	28	43
Merton	18	13	37	68
Kingston	20	4	23	47
Richmond	25	9	34	68
Hounslow	28	19	64	111
Hillingdon	22	5	76	103
Ealing	31	15	114	160
Brent	39	18	85	142
Harrow	7	11	54	72
Barnet	40	21	119	180
Haringey	39	31	79	149
Enfield	29	11	111	151
Total Outer	480	309	1,380	2,169
Greater London	1,071	820	2,521	4,412

Table 2.18 Collisions in the Greater London area in 2011 tabulated by day of week and time of day

Time of day	Monday	Tuesday	Wednesday	Thursday	Friday	Saturday	Sunday	Total
00.00-00.59	43	35	39	64	66	96	84	427
01.00-01.59	28	30	17	18	43	71	85	292
02.00-02.59	19	11	12	15	22	62	65	206
03.00-03.59	12	21	20	14	20	54	56	197
04.00-04.59	15	13	18	15	13	39	54	167
05.00-05.59	27	20	32	32	20	39	39	209
06.00-06.59	59	72	73	73	52	59	49	437
07.00-07.59	167	206	203	207	181	55	58	1,077
08.00-08.59	324	369	342	322	323	78	55	1,813
09.00-09.59	185	241	270	247	203	111	73	1,330
10.00-10.59	155	127	167	159	170	138	104	1,020
11.00-11.59	148	158	160	161	167	190	123	1,107
12.00-12.59	158	176	174	198	194	200	138	1,238
13.00-13.59	180	202	213	203	221	198	179	1,396
14.00-14.59	174	197	198	196	215	224	172	1,376
15.00-15.59	269	282	243	291	304	164	156	1,709
16.00-16.59	262	276	288	301	318	208	147	1,800
17.00-17.59	295	356	331	300	367	238	156	2,043
18.00-18.59	305	313	314	307	304	188	198	1,929
19.00-19.59	213	253	225	236	243	183	158	1,511
20.00-20.59	135	145	164	170	187	141	120	1,062
21.00-21.59	95	104	100	129	134	137	95	794
22.00-22.59	73	95	91	117	144	124	89	733
23.00-23.59	58	52	66	82	138	111	63	570
Total	3,399	3,754	3,760	3,857	4,049	3,108	2,516	24,443

Table 2.19 Collisions in the Greater London area in 2011 tabulated by lighting condition and borough

Borough	Light	Dark	Total
City of London	254	101	355
Westminster	967	489	1,456
Camden	602	243	845
Islington	601	252	853
Hackney	521	280	801
Tower Hamlets	609	274	883
Greenwich	547	201	748
Lewisham	653	237	890
Southwark	732	260	992
Lambeth	768	349	1,117
Wandsworth	661	290	951
Hammersmith and Fulham	498	172	670
Kensington and Chelsea	472	243	715
Total Inner	7,885	3,391	11,276
Waltham Forest	487	175	662
Redbridge	526	204	730
Havering	453	154	607
Barking and Dagenham	367	109	476
Newham	516	223	739
Bexley	317	137	454
Bromley	528	172	700
Croydon	710	256	966
Sutton	303	104	407
Merton	298	105	403
Kingston	274	102	376
Richmond	320	139	459
Hounslow	580	208	788
Hillingdon	553	197	750
Ealing	600	225	825
Brent	545	216	761
Harrow	274	93	367
Barnet	812	301	1,113
Haringey	533	206	739
Enfield	597	248	845
Total Outer	9,593	3,574	13,167
Greater London	17,478	6,965	24,443

Table 2.20 Collisions in the Greater London area in 2011 tabulated by speed limit and borough

Borough	20 mph or less	30 mph	40 mph	50 mph	60 mph	70 mph	Total
City of London	0	353	1	1	0	0	355
Westminster	0	1,451	4	1	0	0	1,456
Camden	5	837	2	1	0	0	845
Islington	4	848	0	1	0	0	853
Hackney	1	798	1	1	0	0	801
Tower Hamlets	0	869	2	12	0	0	883
Greenwich	0	673	29	44	1	1	748
Lewisham	1	888	0	1	0	0	890
Southwark	6	986	0	0	0	0	992
Lambeth	7	1,105	5	0	0	0	1,117
Wandsworth	2	931	17	1	0	0	951
Hammersmith and Fulham	1	665	4	0	0	0	670
Kensington and Chelsea	0	712	2	1	0	0	715
Total Inner	27	11,116	67	64	1	1	11,276
Waltham Forest	0	631	2	28	0	1	662
Redbridge	4	624	48	52	0	2	730
Havering	0	510	12	27	1	57	607
Barking and Dagenham	3	405	31	32	1	4	476
Newham	0	679	15	44	0	1	739
Bexley	1	410	9	34	0	0	454
Bromley	0	689	8	3	0	0	700
Croydon	11	936	18	1	0	0	966
Sutton	1	388	18	0	0	0	407
Merton	0	402	0	1	0	0	403
Kingston	0	366	0	10	0	0	376
Richmond	1	456	2	0	0	0	459
Hounslow	0	599	154	21	4	10	788
Hillingdon	0	598	63	46	1	42	750
Ealing	1	733	62	29	0	0	825
Brent	0	730	17	14	0	0	761
Harrow	1	361	5	0	0	0	367
Barnet	3	959	55	88	1	7	1,113
Haringey	1	730	4	4	0	0	739
Enfield	0	692	71	42	2	38	845
Total Outer	27	11,898	594	476	10	162	13,167
Greater London	54	23,014	661	540	11	163	24,443

Table 2.21 Collisions in the Greater London area in 2011 tabulated by highway authority and borough

Borough	TLRN ¹	Highways		Total
		Agency	Borough	
City of London	150	0	205	355
Westminster	412	0	1,044	1,456
Camden	229	0	616	845
Islington	440	0	413	853
Hackney	405	0	396	801
Tower Hamlets	486	0	397	883
Greenwich	220	0	528	748
Lewisham	442	0	448	890
Southwark	482	0	510	992
Lambeth	680	0	437	1,117
Wandsworth	502	0	449	951
Hammersmith and Fulham	68	0	602	670
Kensington and Chelsea	222	0	493	715
Total Inner	4,738	0	6,538	11,276
Waltham Forest	69	0	593	662
Redbridge	187	4	539	730
Havering	113	54	440	607
Barking and Dagenham	94	0	382	476
Newham	120	0	619	739
Bexley	42	0	412	454
Bromley	81	0	619	700
Croydon	202	0	764	966
Sutton	116	0	291	407
Merton	65	0	338	403
Kingston	81	0	295	376
Richmond	109	0	350	459
Hounslow	299	36	453	788
Hillingdon	101	54	595	750
Ealing	189	0	636	825
Brent	66	0	695	761
Harrow	0	0	367	367
Barnet	302	13	798	1,113
Haringey	173	0	566	739
Enfield	193	53	599	845
Total Outer	2,602	214	10,351	13,167
Greater London	7,340	214	16,889	24,443

¹ TLRN is the Transport for London Road Network.

Note: the highway authority is allocated according to the category of the road at which the collision occurred. For a collision occurring at a junction where the collision cannot be clearly allocated to a particular road the highway authority of the major road is chosen.

Figure 2.22: Collisions in Greater London by month 2011

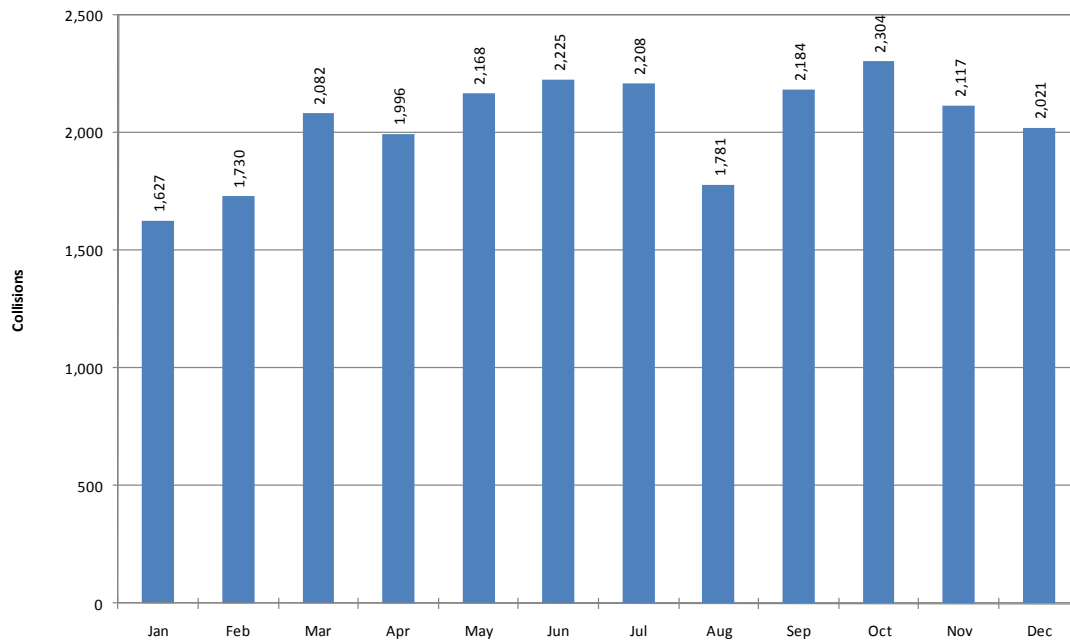


Figure 2.23: Collisions in Greater London by day of week 2011

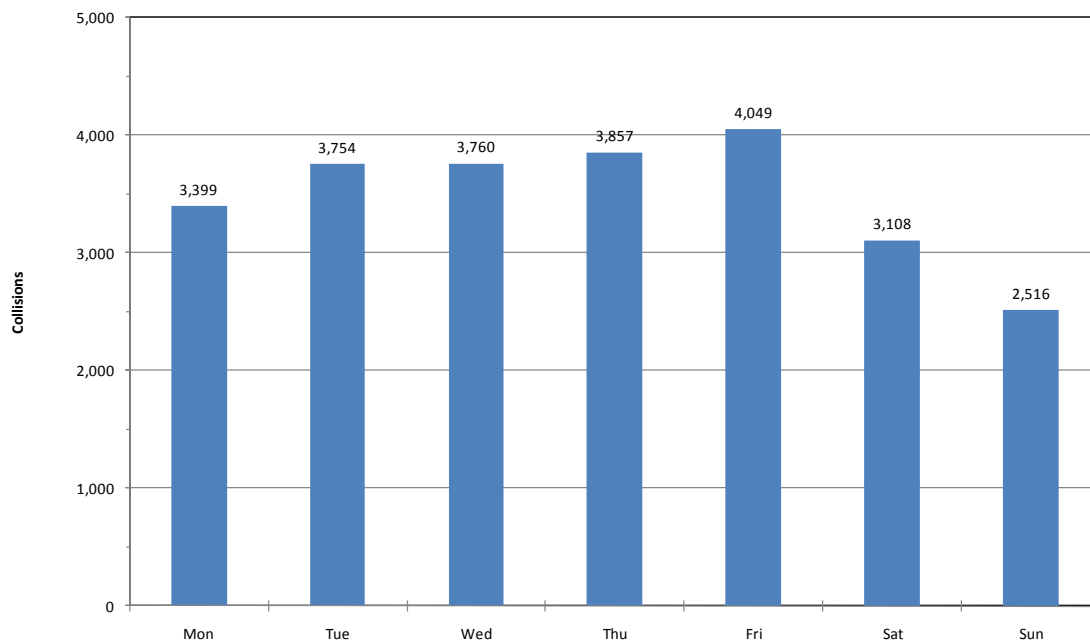
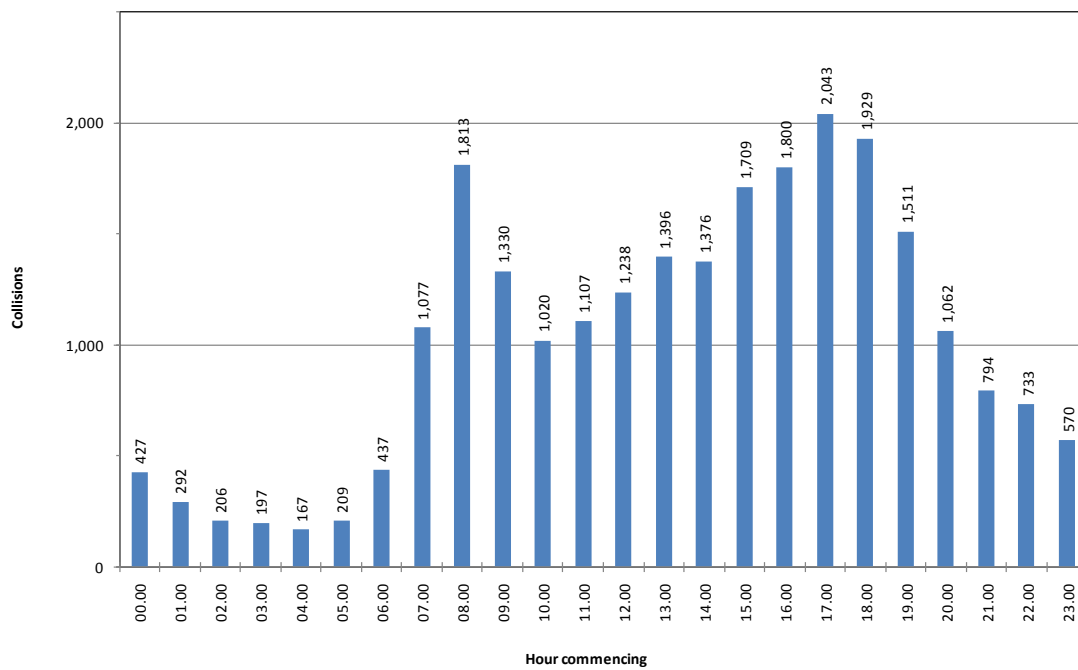


Figure 2.24: Collisions in Greater London by hour of day 2011



3

Casualty data 2011

Table 3.1: Casualties in Greater London 2011 by mode of travel and severity of casualty

Mode of travel				Total	% of total in 2011
	Fatal	Serious	Slight		
Pedestrian	77	903	4,466	5,446	18.6%
Pedal cyclist	16	555	3,926	4,497	15.4%
Powered two-wheeler	30	569	4,077	4,676	16.0%
Car	32	467	11,293	11,792	40.3%
Taxi	0	25	540	565	1.9%
Bus or coach	1	85	1,384	1,470	5.0%
Goods vehicle	1	29	615	645	2.2%
Other vehicle	2	13	151	166	0.6%
Total	159	2,646	26,452	29,257	100.0%
<i>% of total in 2011</i>	<i>0.5%</i>	<i>9.0%</i>	<i>90.4%</i>	<i>100.0%</i>	

Table 3.2: Casualties in Greater London in 2011 by mode of travel, age group and gender

Mode of travel	Age group					Gender		Total
	0-15	16-24	25-59	60+	Unknown	Male	Female	
Pedestrian	1,181	942	2,299	712	312	2,973	2,473	5,446
Pedal cyclist	206	638	3,283	134	236	3,421	1,076	4,497
Powered two-wheeler	9	1,124	3,235	90	218	4,291	385	4,676
Car	575	2,416	7,164	914	723	6,317	5,475	11,792
Taxi	14	60	397	50	44	430	135	565
Bus or coach	181	84	634	424	147	524	946	1,470
Goods vehicle	9	82	491	28	35	568	77	645
Other vehicle	6	24	87	20	29	111	55	166
Total	2,181	5,370	17,590	2,372	1,744	18,635	10,622	29,257
<i>% of total in 2011</i>	<i>7.5%</i>	<i>18.4%</i>	<i>60.1%</i>	<i>8.1%</i>	<i>6.0%</i>	<i>63.7%</i>	<i>36.3%</i>	<i>100.0%</i>

Table 3.3: Casualties in Greater London 2011 by borough and percentage change over 2010

Borough	Total casualties		Pedestrians		Pedal cyclists		Powered two-wheelers		Car occupants		Total vehicle occupants	
City of London	409	(8%)	98	(-13%)	149	(17%)	71	(25%)	41	(24%)	311	(16%)
Westminster	1,638	(2%)	449	(0%)	371	(20%)	304	(-8%)	264	(-6%)	1,189	(3%)
Camden	932	(-3%)	224	(-11%)	284	(21%)	172	(-2%)	159	(-16%)	708	(-1%)
Islington	985	(18%)	195	(3%)	279	(20%)	188	(11%)	218	(34%)	790	(23%)
Hackney	872	(-3%)	201	(17%)	259	(31%)	126	(-2%)	213	(-31%)	671	(-8%)
Tower Hamlets	945	(-3%)	191	(6%)	205	(16%)	202	(28%)	288	(-26%)	754	(-4%)
Greenwich	928	(9%)	158	(7%)	77	(7%)	131	(6%)	464	(16%)	770	(9%)
Lewisham	1,064	(13%)	208	(17%)	142	(15%)	200	(40%)	386	(-4%)	856	(13%)
Southwark	1,134	(-1%)	203	(-1%)	283	(7%)	235	(3%)	274	(-18%)	931	(-1%)
Lambeth	1,307	(1%)	247	(-2%)	285	(4%)	283	(8%)	350	(4%)	1,060	(2%)
Wandsworth	1,058	(3%)	190	(1%)	258	(8%)	286	(17%)	246	(-16%)	868	(4%)
Hammersmith & Fulham	772	(12%)	156	(24%)	171	(2%)	187	(7%)	196	(14%)	616	(9%)
Kensington & Chelsea	802	(1%)	203	(19%)	177	(-5%)	205	(-7%)	146	(-4%)	599	(-4%)
Total Inner London	12,846	(4%)	2,723	(4%)	2,940	(13%)	2,590	(7%)	3,245	(-6%)	10,123	(4%)
Waltham Forest	813	(3%)	133	(3%)	113	(49%)	95	(25%)	400	(-11%)	680	(4%)
Redbridge	946	(1%)	143	(-8%)	60	(43%)	85	(12%)	596	(2%)	803	(3%)
Havering	809	(2%)	100	(1%)	44	(29%)	68	(3%)	531	(1%)	709	(2%)
Barking & Dagenham	607	(11%)	78	(-5%)	44	(0%)	65	(3%)	365	(18%)	529	(14%)
Newham	908	(0%)	218	(1%)	97	(8%)	81	(-6%)	427	(-6%)	690	(-1%)
Bexley	570	(-3%)	89	(2%)	29	(-45%)	79	(25%)	311	(-7%)	481	(-4%)
Bromley	870	(7%)	146	(18%)	88	(0%)	89	(-14%)	461	(4%)	724	(5%)
Croydon	1,231	(10%)	205	(-3%)	115	(62%)	145	(7%)	634	(6%)	1,026	(13%)
Sutton	534	(11%)	60	(-12%)	48	(20%)	78	(11%)	305	(17%)	474	(15%)
Merton	513	(12%)	88	(0%)	66	(3%)	89	(17%)	222	(9%)	425	(15%)
Kingston	443	(4%)	64	(12%)	87	(43%)	77	(33%)	180	(-20%)	379	(2%)
Richmond	518	(9%)	89	(13%)	129	(17%)	105	(8%)	156	(-5%)	429	(8%)
Hounslow	995	(2%)	138	(16%)	120	(9%)	150	(9%)	486	(-11%)	857	(0%)
Hillingdon	946	(-12%)	131	(7%)	63	(-21%)	117	(26%)	561	(-23%)	815	(-15%)
Ealing	984	(-7%)	201	(-5%)	110	(10%)	161	(7%)	411	(-17%)	783	(-7%)
Brent	896	(-3%)	167	(-13%)	81	(0%)	164	(13%)	420	(-5%)	729	(-1%)
Harrow	422	(-23%)	98	(-6%)	30	(0%)	44	(7%)	217	(-38%)	324	(-28%)
Barnet	1,382	(-9%)	204	(-15%)	71	(-13%)	171	(-1%)	825	(-10%)	1,178	(-8%)
Haringey	915	(-7%)	188	(-11%)	95	(-1%)	122	(-4%)	374	(-16%)	727	(-6%)
Enfield	1,109	(3%)	183	(8%)	67	(22%)	101	(19%)	665	(3%)	926	(2%)
Total Outer London	16,411	(-1%)	2,723	(-2%)	1,557	(11%)	2,086	(9%)	8,547	(-6%)	13,688	(0%)
Greater London	29,257	(1%)	5,446	(1%)	4,497	(12%)	4,676	(8%)	11,792	(-6%)	23,811	(1%)

Figure 3.4a: Vehicle casualties by type of road user 2007-2011



Figure 3.4b: Vehicle casualties by type of road user 2007-2011



Figure 3.5a: Pedestrian casualties 2007-2011

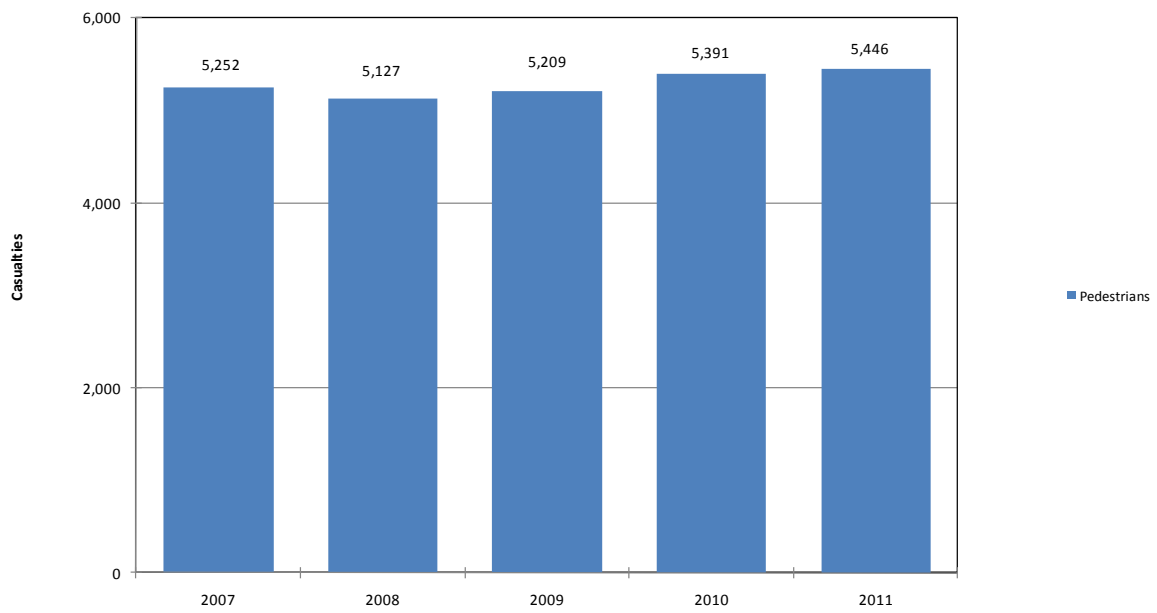


Figure 3.5b: Pedestrian casualties by age groups 2007-2011

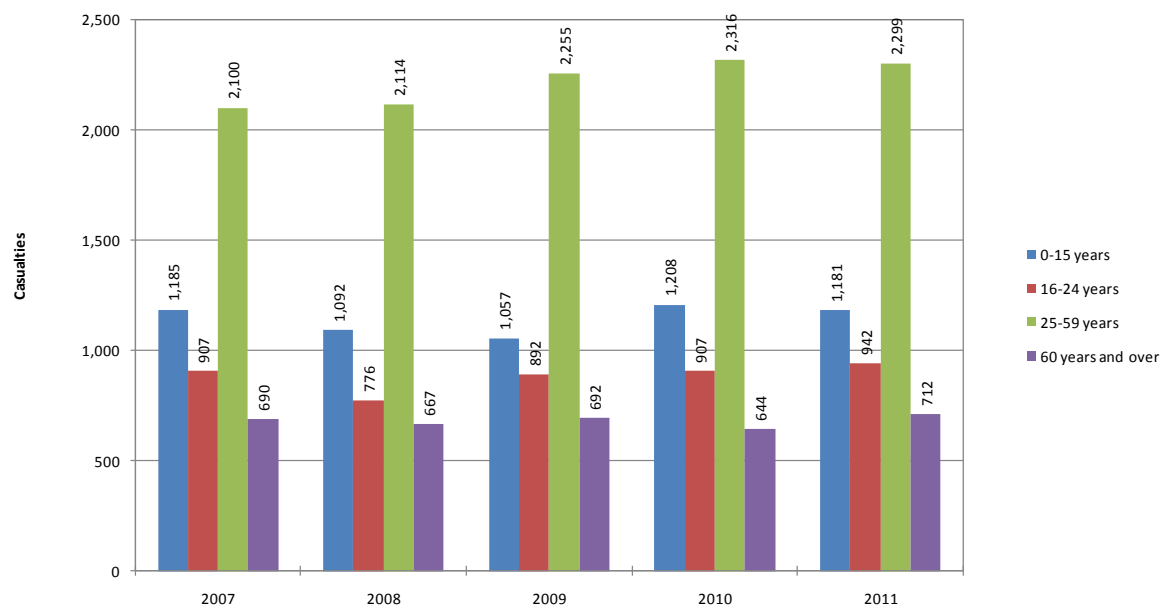


Figure 3.6a: Driver / rider casualties by type of vehicle 2007-2011



Figure 3.6b: Driver / rider casualties by type of vehicle 2007-2011

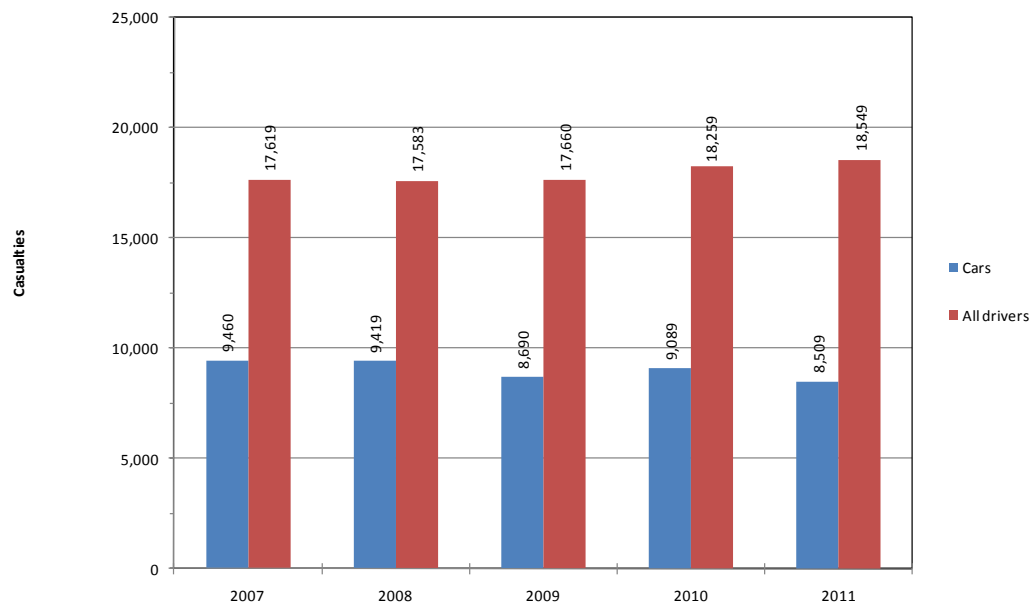


Figure 3.7a: Passenger casualties by type of vehicle 2007-2011

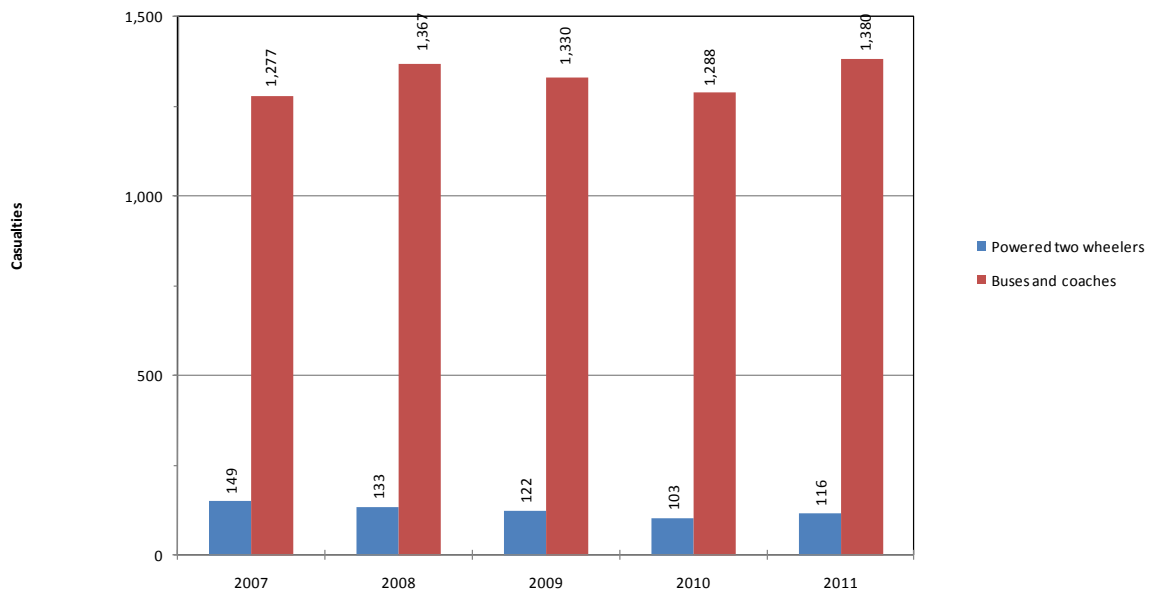


Figure 3.7b: Passenger casualties by type of vehicle 2007-2011

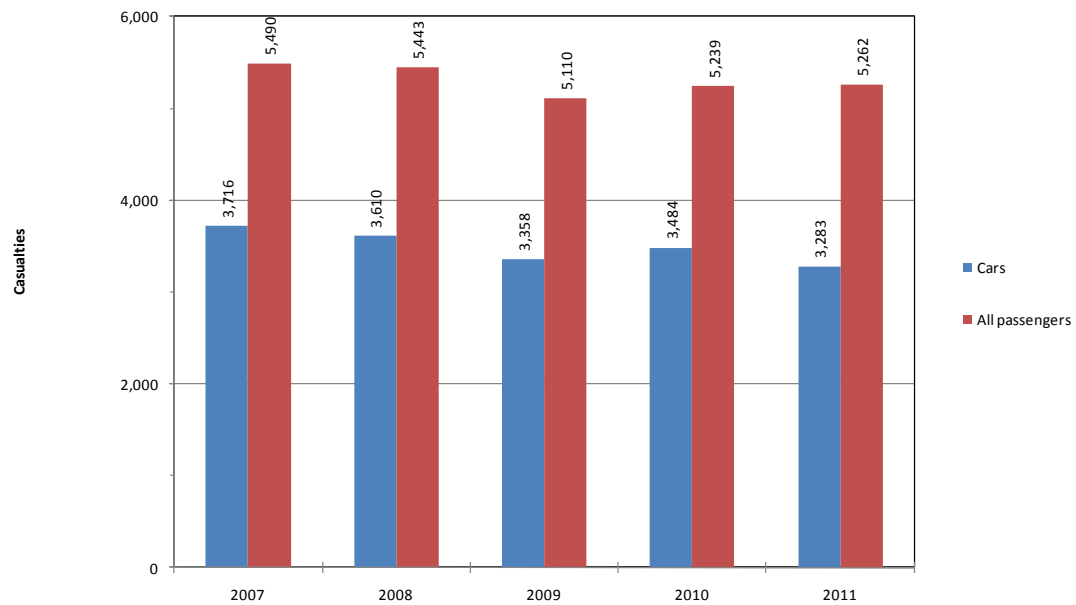


Table 3.8 Driver and passenger casualties in the Greater London area in 2011 tabulated by age group and vehicle occupied

Vehicle type	0-15 years	16-24 years	25-59 years	60+ years	Not known	Total
Pedal cycle	206	638	3,283	134	236	4,497
Motor cycle up to 50cc	2	188	255	5	45	495
Motor cycle 50 to 125cc	4	701	1,383	22	92	2,202
Motor cycle 125 to 500cc	1	73	309	18	25	426
Motor cycle over 500cc	2	162	1,288	45	56	1,553
Car	575	2,416	7,164	914	723	11,792
Taxi	14	60	397	50	44	565
Bus or coach	181	84	634	424	147	1,470
Goods	9	82	491	28	35	645
Other	6	24	87	20	29	166
Total	1,000	4,428	15,291	1,660	1,432	23,811

Table 3.9 Casualties in the Greater London area in 2011 tabulated by severity and borough

Borough	Fatal	Serious	Slight	Total
City of London	0	49	360	409
Westminster	6	154	1,478	1,638
Camden	6	94	832	932
Islington	4	96	885	985
Hackney	3	105	764	872
Tower Hamlets	8	95	842	945
Greenwich	2	92	834	928
Lewisham	2	100	962	1,064
Southwark	5	121	1,008	1,134
Lambeth	10	159	1,138	1,307
Wandsworth	4	108	946	1,058
Hammersmith and Fulham	3	74	695	772
Kensington and Chelsea	5	77	720	802
Total Inner	58	1,324	11,464	12,846
Waltham Forest	4	64	745	813
Redbridge	2	74	870	946
Havering	8	66	735	809
Barking and Dagenham	4	45	558	607
Newham	3	71	834	908
Bexley	5	44	521	570
Bromley	7	74	789	870
Croydon	10	99	1,122	1,231
Sutton	4	41	489	534
Merton	1	45	467	513
Kingston	2	42	399	443
Richmond	2	67	449	518
Hounslow	7	66	922	995
Hillingdon	7	67	872	946
Ealing	5	61	918	984
Brent	3	69	824	896
Harrow	3	34	385	422
Barnet	8	133	1,241	1,382
Haringey	4	74	837	915
Enfield	12	86	1,011	1,109
Total Outer	101	1,322	14,988	16,411
Greater London	159	2,646	26,452	29,257

Table 3.10 Casualties in the Greater London area in 2011 by borough, mode of travel and severity

00 City of London

Mode of travel	Fatal	Serious	Slight	Total
Pedestrians	0	12	86	98
Pedal cycles	0	23	126	149
Powered two wheelers	0	12	59	71
Car occupants	0	1	40	41
Taxi occupants	0	0	16	16
Bus or coach occupants	0	1	21	22
Goods vehicle occupants	0	0	8	8
Other vehicle occupants	0	0	4	4
Total	0	49	360	409

01 Westminster

Mode of travel	Fatal	Serious	Slight	Total
Pedestrians	4	76	369	449
Pedal cycles	0	30	341	371
Powered two wheelers	2	26	276	304
Car occupants	0	9	255	264
Taxi occupants	0	4	83	87
Bus or coach occupants	0	7	118	125
Goods vehicle occupants	0	1	30	31
Other vehicle occupants	0	1	6	7
Total	6	154	1,478	1,638

Table 3.10 Casualties in the Greater London area in 2011 by borough, mode of travel and severity

02 Camden

Mode of travel	Fatal	Serious	Slight	Total
Pedestrians	3	32	189	224
Pedal cycles	2	30	252	284
Powered two wheelers	1	20	151	172
Car occupants	0	10	149	159
Taxi occupants	0	0	20	20
Bus or coach occupants	0	2	55	57
Goods vehicle occupants	0	0	12	12
Other vehicle occupants	0	0	4	4
Total	6	94	832	932

03 Islington

Mode of travel	Fatal	Serious	Slight	Total
Pedestrians	2	27	166	195
Pedal cycles	2	36	241	279
Powered two wheelers	0	14	174	188
Car occupants	0	13	205	218
Taxi occupants	0	4	27	31
Bus or coach occupants	0	2	54	56
Goods vehicle occupants	0	0	10	10
Other vehicle occupants	0	0	8	8
Total	4	96	885	985

Table 3.10 Casualties in the Greater London area in 2011 by borough, mode of travel and severity

04 Hackney

Mode of travel	Fatal	Serious	Slight	Total
Pedestrians	2	38	161	201
Pedal cycles	1	39	219	259
Powered two wheelers	0	14	112	126
Car occupants	0	8	205	213
Taxi occupants	0	0	6	6
Bus or coach occupants	0	6	46	52
Goods vehicle occupants	0	0	15	15
Other vehicle occupants	0	0	0	0
Total	3	105	764	872

05 Tower Hamlets

Mode of travel	Fatal	Serious	Slight	Total
Pedestrians	3	36	152	191
Pedal cycles	3	30	172	205
Powered two wheelers	1	19	182	202
Car occupants	0	9	279	288
Taxi occupants	0	0	12	12
Bus or coach occupants	0	1	29	30
Goods vehicle occupants	0	0	15	15
Other vehicle occupants	1	0	1	2
Total	8	95	842	945

Table 3.10 Casualties in the Greater London area in 2011 by borough, mode of travel and severity

06 Greenwich

Mode of travel	Fatal	Serious	Slight	Total
Pedestrians	0	35	123	158
Pedal cycles	0	8	69	77
Powered two wheelers	1	20	110	131
Car occupants	1	21	442	464
Taxi occupants	0	1	26	27
Bus or coach occupants	0	5	39	44
Goods vehicle occupants	0	1	23	24
Other vehicle occupants	0	1	2	3
Total	2	92	834	928

07 Lewisham

Mode of travel	Fatal	Serious	Slight	Total
Pedestrians	1	38	169	208
Pedal cycles	0	19	123	142
Powered two wheelers	1	24	175	200
Car occupants	0	14	372	386
Taxi occupants	0	1	26	27
Bus or coach occupants	0	3	71	74
Goods vehicle occupants	0	1	22	23
Other vehicle occupants	0	0	4	4
Total	2	100	962	1,064

Table 3.10 Casualties in the Greater London area in 2011 by borough, mode of travel and severity

08 Southwark

Mode of travel	Fatal	Serious	Slight	Total
Pedestrians	2	35	166	203
Pedal cycles	2	39	242	283
Powered two wheelers	1	26	208	235
Car occupants	0	15	259	274
Taxi occupants	0	2	15	17
Bus or coach occupants	0	4	97	101
Goods vehicle occupants	0	0	20	20
Other vehicle occupants	0	0	1	1
Total	5	121	1,008	1,134

09 Lambeth

Mode of travel	Fatal	Serious	Slight	Total
Pedestrians	8	48	191	247
Pedal cycles	1	40	244	285
Powered two wheelers	1	45	237	283
Car occupants	0	18	332	350
Taxi occupants	0	0	22	22
Bus or coach occupants	0	8	90	98
Goods vehicle occupants	0	0	14	14
Other vehicle occupants	0	0	8	8
Total	10	159	1,138	1,307

Table 3.10 Casualties in the Greater London area in 2011 by borough, mode of travel and severity

10 Wandsworth

Mode of travel	Fatal	Serious	Slight	Total
Pedestrians	1	35	154	190
Pedal cycles	0	23	235	258
Powered two wheelers	2	37	247	286
Car occupants	1	7	238	246
Taxi occupants	0	0	20	20
Bus or coach occupants	0	6	38	44
Goods vehicle occupants	0	0	11	11
Other vehicle occupants	0	0	3	3
Total	4	108	946	1,058

11 Hammersmith and Fulham

Mode of travel	Fatal	Serious	Slight	Total
Pedestrians	1	25	130	156
Pedal cycles	1	21	149	171
Powered two wheelers	1	20	166	187
Car occupants	0	5	191	196
Taxi occupants	0	1	7	8
Bus or coach occupants	0	1	30	31
Goods vehicle occupants	0	1	15	16
Other vehicle occupants	0	0	7	7
Total	3	74	695	772

Table 3.10 Casualties in the Greater London area in 2011 by borough, mode of travel and severity

12 Kensington and Chelsea

Mode of travel	Fatal	Serious	Slight	Total
Pedestrians	4	34	165	203
Pedal cycles	0	22	155	177
Powered two wheelers	1	14	190	205
Car occupants	0	2	144	146
Taxi occupants	0	0	28	28
Bus or coach occupants	0	5	32	37
Goods vehicle occupants	0	0	6	6
Other vehicle occupants	0	0	0	0
Total	5	77	720	802

13 Waltham Forest

Mode of travel	Fatal	Serious	Slight	Total
Pedestrians	2	18	113	133
Pedal cycles	0	16	97	113
Powered two wheelers	0	14	81	95
Car occupants	1	16	383	400
Taxi occupants	0	0	16	16
Bus or coach occupants	1	0	36	37
Goods vehicle occupants	0	0	16	16
Other vehicle occupants	0	0	3	3
Total	4	64	745	813

Table 3.10 Casualties in the Greater London area in 2011 by borough, mode of travel and severity

14 Redbridge

Mode of travel	Fatal	Serious	Slight	Total
Pedestrians	0	24	119	143
Pedal cycles	0	6	54	60
Powered two wheelers	0	11	74	85
Car occupants	2	27	567	596
Taxi occupants	0	3	9	12
Bus or coach occupants	0	0	19	19
Goods vehicle occupants	0	3	28	31
Other vehicle occupants	0	0	0	0
Total	2	74	870	946

15 Havering

Mode of travel	Fatal	Serious	Slight	Total
Pedestrians	5	15	80	100
Pedal cycles	0	5	39	44
Powered two wheelers	1	13	54	68
Car occupants	2	31	498	531
Taxi occupants	0	1	3	4
Bus or coach occupants	0	0	30	30
Goods vehicle occupants	0	0	26	26
Other vehicle occupants	0	1	5	6
Total	8	66	735	809

Table 3.10 Casualties in the Greater London area in 2011 by borough, mode of travel and severity

16 Barking and Dagenham

Mode of travel	Fatal	Serious	Slight	Total
Pedestrians	0	7	71	78
Pedal cycles	1	8	35	44
Powered two wheelers	2	15	48	65
Car occupants	1	11	353	365
Taxi occupants	0	0	3	3
Bus or coach occupants	0	2	17	19
Goods vehicle occupants	0	2	24	26
Other vehicle occupants	0	0	7	7
Total	4	45	558	607

17 Newham

Mode of travel	Fatal	Serious	Slight	Total
Pedestrians	2	24	192	218
Pedal cycles	0	11	86	97
Powered two wheelers	0	15	66	81
Car occupants	1	17	409	427
Taxi occupants	0	0	13	13
Bus or coach occupants	0	0	40	40
Goods vehicle occupants	0	1	24	25
Other vehicle occupants	0	3	4	7
Total	3	71	834	908

Table 3.10 Casualties in the Greater London area in 2011 by borough, mode of travel and severity

18 Bexley

Mode of travel	Fatal	Serious	Slight	Total
Pedestrians	2	13	74	89
Pedal cycles	0	5	24	29
Powered two wheelers	1	9	69	79
Car occupants	2	15	294	311
Taxi occupants	0	0	10	10
Bus or coach occupants	0	1	26	27
Goods vehicle occupants	0	1	20	21
Other vehicle occupants	0	0	4	4
Total	5	44	521	570

19 Bromley

Mode of travel	Fatal	Serious	Slight	Total
Pedestrians	2	22	122	146
Pedal cycles	1	12	75	88
Powered two wheelers	0	15	74	89
Car occupants	4	21	436	461
Taxi occupants	0	1	7	8
Bus or coach occupants	0	0	42	42
Goods vehicle occupants	0	1	29	30
Other vehicle occupants	0	2	4	6
Total	7	74	789	870

Table 3.10 Casualties in the Greater London area in 2011 by borough, mode of travel and severity

20 Croydon

Mode of travel	Fatal	Serious	Slight	Total
Pedestrians	7	35	163	205
Pedal cycles	0	14	101	115
Powered two wheelers	1	18	126	145
Car occupants	2	23	609	634
Taxi occupants	0	2	21	23
Bus or coach occupants	0	4	61	65
Goods vehicle occupants	0	3	30	33
Other vehicle occupants	0	0	11	11
Total	10	99	1,122	1,231

21 Sutton

Mode of travel	Fatal	Serious	Slight	Total
Pedestrians	2	8	50	60
Pedal cycles	1	5	42	48
Powered two wheelers	1	12	65	78
Car occupants	0	15	290	305
Taxi occupants	0	0	14	14
Bus or coach occupants	0	0	19	19
Goods vehicle occupants	0	1	9	10
Other vehicle occupants	0	0	0	0
Total	4	41	489	534

Table 3.10 Casualties in the Greater London area in 2011 by borough, mode of travel and severity

22 Merton

Mode of travel	Fatal	Serious	Slight	Total
Pedestrians	0	20	68	88
Pedal cycles	0	8	58	66
Powered two wheelers	1	14	74	89
Car occupants	0	2	220	222
Taxi occupants	0	0	12	12
Bus or coach occupants	0	1	16	17
Goods vehicle occupants	0	0	17	17
Other vehicle occupants	0	0	2	2
Total	1	45	467	513

23 Kingston

Mode of travel	Fatal	Serious	Slight	Total
Pedestrians	0	12	52	64
Pedal cycles	0	15	72	87
Powered two wheelers	2	8	67	77
Car occupants	0	6	174	180
Taxi occupants	0	0	7	7
Bus or coach occupants	0	1	17	18
Goods vehicle occupants	0	0	6	6
Other vehicle occupants	0	0	4	4
Total	2	42	399	443

Table 3.10 Casualties in the Greater London area in 2011 by borough, mode of travel and severity

24 Richmond

Mode of travel	Fatal	Serious	Slight	Total
Pedestrians	1	18	70	89
Pedal cycles	0	27	102	129
Powered two wheelers	1	13	91	105
Car occupants	0	5	151	156
Taxi occupants	0	0	6	6
Bus or coach occupants	0	2	19	21
Goods vehicle occupants	0	0	6	6
Other vehicle occupants	0	2	4	6
Total	2	67	449	518

25 Hounslow

Mode of travel	Fatal	Serious	Slight	Total
Pedestrians	3	28	107	138
Pedal cycles	0	10	110	120
Powered two wheelers	2	15	133	150
Car occupants	2	12	472	486
Taxi occupants	0	0	29	29
Bus or coach occupants	0	0	29	29
Goods vehicle occupants	0	1	26	27
Other vehicle occupants	0	0	16	16
Total	7	66	922	995

Table 3.10 Casualties in the Greater London area in 2011 by borough, mode of travel and severity

26 Hillingdon

Mode of travel	Fatal	Serious	Slight	Total
Pedestrians	3	21	107	131
Pedal cycles	1	3	59	63
Powered two wheelers	0	12	105	117
Car occupants	3	27	531	561
Taxi occupants	0	1	14	15
Bus or coach occupants	0	3	27	30
Goods vehicle occupants	0	0	27	27
Other vehicle occupants	0	0	2	2
Total	7	67	872	946

27 Ealing

Mode of travel	Fatal	Serious	Slight	Total
Pedestrians	1	25	175	201
Pedal cycles	0	9	101	110
Powered two wheelers	1	18	142	161
Car occupants	2	6	403	411
Taxi occupants	0	0	15	15
Bus or coach occupants	0	2	43	45
Goods vehicle occupants	0	1	33	34
Other vehicle occupants	1	0	6	7
Total	5	61	918	984

Table 3.10 Casualties in the Greater London area in 2011 by borough, mode of travel and severity

28 Brent

Mode of travel	Fatal	Serious	Slight	Total
Pedestrians	2	25	140	167
Pedal cycles	0	7	74	81
Powered two wheelers	1	21	142	164
Car occupants	0	11	409	420
Taxi occupants	0	2	9	11
Bus or coach occupants	0	2	32	34
Goods vehicle occupants	0	1	14	15
Other vehicle occupants	0	0	4	4
Total	3	69	824	896

29 Harrow

Mode of travel	Fatal	Serious	Slight	Total
Pedestrians	1	16	81	98
Pedal cycles	0	0	30	30
Powered two wheelers	1	6	37	44
Car occupants	1	9	207	217
Taxi occupants	0	0	3	3
Bus or coach occupants	0	3	18	21
Goods vehicle occupants	0	0	7	7
Other vehicle occupants	0	0	2	2
Total	3	34	385	422

Table 3.10 Casualties in the Greater London area in 2011 by borough, mode of travel and severity

30 Barnet

Mode of travel	Fatal	Serious	Slight	Total
Pedestrians	5	42	157	204
Pedal cycles	0	12	59	71
Powered two wheelers	1	22	148	171
Car occupants	2	46	777	825
Taxi occupants	0	1	10	11
Bus or coach occupants	0	5	51	56
Goods vehicle occupants	0	4	32	36
Other vehicle occupants	0	1	7	8
Total	8	133	1,241	1,382

31 Haringey

Mode of travel	Fatal	Serious	Slight	Total
Pedestrians	2	36	150	188
Pedal cycles	0	12	83	95
Powered two wheelers	1	12	109	122
Car occupants	1	8	365	374
Taxi occupants	0	1	21	22
Bus or coach occupants	0	5	79	84
Goods vehicle occupants	0	0	18	18
Other vehicle occupants	0	0	12	12
Total	4	74	837	915

Table 3.10 Casualties in the Greater London area in 2011 by borough, mode of travel and severity

32 Enfield

Mode of travel	Fatal	Serious	Slight	Total
Pedestrians	6	23	154	183
Pedal cycles	0	10	57	67
Powered two wheelers	1	15	85	101
Car occupants	4	27	634	665
Taxi occupants	0	0	10	10
Bus or coach occupants	0	3	43	46
Goods vehicle occupants	1	6	22	29
Other vehicle occupants	0	2	6	8
Total	12	86	1,011	1,109

Table 3.11 Casualties in the Greater London area in 2011 by borough, mode of travel and severity

Greater London total

Mode of travel	Fatal	Serious	Slight	Total
Pedestrians	77	903	4,466	5,446
Pedal cycles	16	555	3,926	4,497
Powered two wheelers	30	569	4,077	4,676
Car occupants	32	467	11,293	11,792
Taxi occupants	0	25	540	565
Bus or coach occupants	1	85	1,384	1,470
Goods vehicle occupants	1	29	615	645
Other vehicle occupants	2	13	151	166
Total	159	2,646	26,452	29,257

Table 3.12 Pedestrian casualties in the Greater London area in 2011 tabulated by severity and borough

Borough	Fatal	Serious	Slight	Total
City of London	0	12	86	98
Westminster	4	76	369	449
Camden	3	32	189	224
Islington	2	27	166	195
Hackney	2	38	161	201
Tower Hamlets	3	36	152	191
Greenwich	0	35	123	158
Lewisham	1	38	169	208
Southwark	2	35	166	203
Lambeth	8	48	191	247
Wandsworth	1	35	154	190
Hammersmith and Fulham	1	25	130	156
Kensington and Chelsea	4	34	165	203
Total Inner	31	471	2,221	2,723
Waltham Forest	2	18	113	133
Redbridge	0	24	119	143
Havering	5	15	80	100
Barking and Dagenham	0	7	71	78
Newham	2	24	192	218
Bexley	2	13	74	89
Bromley	2	22	122	146
Croydon	7	35	163	205
Sutton	2	8	50	60
Merton	0	20	68	88
Kingston	0	12	52	64
Richmond	1	18	70	89
Hounslow	3	28	107	138
Hillingdon	3	21	107	131
Ealing	1	25	175	201
Brent	2	25	140	167
Harrow	1	16	81	98
Barnet	5	42	157	204
Haringey	2	36	150	188
Enfield	6	23	154	183
Total Outer	46	432	2,245	2,723
Greater London	77	903	4,466	5,446

Table 3.13 Driver casualties in the Greater London area in 2011 tabulated by severity and borough

Borough	Fatal	Serious	Slight	Total
City of London	0	36	232	268
Westminster	2	66	877	945
Camden	3	55	539	597
Islington	2	63	574	639
Hackney	1	58	514	573
Tower Hamlets	5	52	620	677
Greenwich	1	41	525	567
Lewisham	1	57	603	661
Southwark	3	75	674	752
Lambeth	2	90	734	826
Wandsworth	3	67	673	743
Hammersmith and Fulham	2	44	468	514
Kensington and Chelsea	1	36	446	483
Total Inner	26	740	7,479	8,245
Waltham Forest	0	41	474	515
Redbridge	1	37	528	566
Havering	2	42	474	518
Barking and Dagenham	2	34	357	393
Newham	0	38	471	509
Bexley	2	28	335	365
Bromley	2	43	501	546
Croydon	2	52	697	751
Sutton	2	29	324	355
Merton	1	24	309	334
Kingston	2	27	284	313
Richmond	1	44	317	362
Hounslow	3	36	609	648
Hillingdon	2	37	598	637
Ealing	2	34	565	601
Brent	1	36	531	568
Harrow	2	13	234	249
Barnet	2	67	832	901
Haringey	2	32	463	497
Enfield	6	52	618	676
Total Outer	37	746	9,521	10,304
Greater London	63	1,486	17,000	18,549

Table 3.14 Passenger casualties in the Greater London area in 2011 tabulated by severity and borough

Borough	Fatal	Serious	Slight	Total
City of London	0	1	42	43
Westminster	0	12	232	244
Camden	0	7	104	111
Islington	0	6	145	151
Hackney	0	9	89	98
Tower Hamlets	0	7	70	77
Greenwich	1	16	186	203
Lewisham	0	5	190	195
Southwark	0	11	168	179
Lambeth	0	21	213	234
Wandsworth	0	6	119	125
Hammersmith and Fulham	0	5	97	102
Kensington and Chelsea	0	7	109	116
Total Inner	1	113	1,764	1,878
Waltham Forest	2	5	158	165
Redbridge	1	13	223	237
Havering	1	9	181	191
Barking and Dagenham	2	4	130	136
Newham	1	9	171	181
Bexley	1	3	112	116
Bromley	3	9	166	178
Croydon	1	12	262	275
Sutton	0	4	115	119
Merton	0	1	90	91
Kingston	0	3	63	66
Richmond	0	5	62	67
Hounslow	1	2	206	209
Hillingdon	2	9	167	178
Ealing	2	2	178	182
Brent	0	8	153	161
Harrow	0	5	70	75
Barnet	1	24	252	277
Haringey	0	6	224	230
Enfield	0	11	239	250
Total Outer	18	144	3,222	3,384
Greater London	19	257	4,986	5,262

Table 3.15 Pedestrian casualties in the Greater London area in 2011 by pedestrian action and borough

Borough	Crossing road at pedestrian crossing	Crossing within 50m of pedestrian crossing	Crossing road elsewhere	Sub-total
City of London	20	26	34	80
Westminster	131	79	166	376
Camden	65	47	75	187
Islington	61	47	75	183
Hackney	26	50	96	172
Tower Hamlets	33	35	94	162
Greenwich	26	24	79	129
Lewisham	40	24	107	171
Southwark	30	41	104	175
Lambeth	54	49	108	211
Wandsworth	36	34	84	154
Hammersmith and Fulham	43	30	60	133
Kensington and Chelsea	49	34	82	165
Total Inner	614	520	1,164	2,298
Waltham Forest	27	18	71	116
Redbridge	22	22	70	114
Havering	10	11	56	77
Barking and Dagenham	14	7	40	61
Newham	45	32	113	190
Bexley	9	8	45	62
Bromley	23	18	72	113
Croydon	29	29	103	161
Sutton	6	9	28	43
Merton	18	13	41	72
Kingston	21	4	23	48
Richmond	26	10	34	70
Hounslow	29	20	64	113
Hillingdon	22	5	77	104
Ealing	34	15	117	166
Brent	39	18	86	143
Harrow	8	11	55	74
Barnet	41	21	121	183
Haringey	42	31	81	154
Enfield	29	11	114	154
Total Outer	494	313	1,411	2,218
Greater London	1,108	833	2,575	4,516

Note: This table is continued on the next page.

Table 3.15 (cont.) Pedestrian casualties in the Greater London area in 2011 by pedestrian action and borough

Borough	In road not crossing	On footpath or verge	On refuge or central strip	In centre of carriageway	Pedestrian location unknown	Grand total
City of London	3	9	1	0	5	98
Westminster	41	29	0	0	3	449
Camden	18	16	0	0	3	224
Islington	10	2	0	0	0	195
Hackney	13	12	0	0	4	201
Tower Hamlets	16	9	0	1	3	191
Greenwich	14	8	0	0	7	158
Lewisham	10	19	0	1	7	208
Southwark	6	13	1	1	7	203
Lambeth	13	6	0	0	17	247
Wandsworth	19	16	0	0	1	190
Hammersmith and Fulham	11	11	0	0	1	156
Kensington and Chelsea	17	16	0	0	5	203
Total Inner	191	166	2	3	63	2,723
Waltham Forest	5	0	0	0	12	133
Redbridge	8	7	2	1	11	143
Havering	7	3	1	0	12	100
Barking and Dagenham	5	5	0	3	4	78
Newham	6	3	0	1	18	218
Bexley	4	9	0	0	14	89
Bromley	15	10	0	0	8	146
Croydon	19	11	0	0	14	205
Sutton	5	3	0	1	8	60
Merton	4	6	0	0	6	88
Kingston	8	6	0	0	2	64
Richmond	9	8	0	0	2	89
Hounslow	10	11	3	0	1	138
Hillingdon	13	10	0	1	3	131
Ealing	22	12	0	1	0	201
Brent	15	6	0	0	3	167
Harrow	12	11	0	0	1	98
Barnet	13	7	0	1	0	204
Haringey	13	20	0	0	1	188
Enfield	12	14	0	0	3	183
Total Outer	205	162	6	9	123	2,723
Greater London	396	328	8	12	186	5,446

Table 3.16 Driver / rider casualties in the Greater London area in 2011 tabulated by vehicle type and borough

Borough	Pedal cycle	Motor cycle				Car	Taxi	Bus or coach	Goods vehicle	Other	Total
		up to 50cc	50 to 125cc	125 to 500cc	over 500cc						
City of London	149	5	27	13	26	29	12	0	7	0	268
Westminster	371	13	163	28	95	188	44	9	28	6	945
Camden	284	12	87	13	58	116	11	2	10	4	597
Islington	279	24	103	15	43	152	8	3	8	4	639
Hackney	259	18	65	10	30	174	4	3	10	0	573
Tower Hamlets	205	18	91	18	70	248	7	4	14	2	677
Greenwich	77	12	55	3	57	319	17	3	23	1	567
Lewisham	142	24	73	16	83	284	15	3	18	3	661
Southwark	283	17	117	17	77	202	16	3	19	1	752
Lambeth	283	22	118	33	99	240	10	3	13	5	826
Wandsworth	258	36	153	17	74	178	12	1	11	3	743
Hammersmith and Fulham	171	18	110	11	42	137	4	4	12	5	514
Kensington and Chelsea	177	19	109	12	56	89	13	2	6	0	483
Total Inner	2,938	238	1,271	206	810	2,356	173	40	179	34	8,245
Waltham Forest	113	15	46	14	16	290	5	4	10	2	515
Redbridge	60	6	40	11	26	397	5	2	19	0	566
Havering	44	6	31	11	19	380	2	2	20	3	518
Barking and Dagenham	44	8	19	3	30	259	3	1	21	5	393
Newham	96	4	35	16	22	306	8	3	16	3	509
Bexley	29	11	37	9	21	234	4	2	16	2	365
Bromley	88	10	34	4	37	337	3	5	25	3	546
Croydon	115	10	57	25	48	440	18	9	23	6	751
Sutton	48	12	30	9	25	218	7	0	6	0	355
Merton	66	12	33	3	40	157	10	1	12	0	334
Kingston	87	12	30	3	31	137	6	0	4	3	313
Richmond	128	11	46	6	40	119	2	1	6	3	362
Hounslow	119	13	67	7	60	342	20	1	17	2	648
Hillingdon	63	21	44	13	38	425	7	4	20	2	637
Ealing	110	13	85	6	53	293	9	2	28	2	601
Brent	81	24	84	11	43	303	5	2	12	3	568
Harrow	30	8	23	1	11	166	1	1	7	1	249
Barnet	71	12	76	30	49	619	7	3	30	4	901
Haringey	94	24	51	11	33	255	10	5	9	5	497
Enfield	67	16	32	12	40	476	5	2	21	5	676
Total Outer	1,553	248	900	205	682	6,153	137	50	322	54	10,304
Greater London	4,491	486	2,171	411	1,492	8,509	310	90	501	88	18,549

Figure 3.17: Pedestrian casualties at or within 50 metres of a pedestrian crossing 2007-2011



Table 3.18 Passenger casualties in the Greater London area in 2011 tabulated by vehicle type and borough

Borough	Motor cycle					Car	Taxi	Bus or Goods			Total
	Pedal cycle	up to 50cc	50 to 125cc	125 to 500cc	over 500cc			coach	vehicle	Other	
City of London	0	0	0	0	0	12	4	22	1	4	43
Westminster	0	1	1	1	2	76	43	116	3	1	244
Camden	0	1	0	0	1	43	9	55	2	0	111
Islington	0	0	0	2	1	66	23	53	2	4	151
Hackney	0	0	2	0	1	39	2	49	5	0	98
Tower Hamlets	0	1	3	0	1	40	5	26	1	0	77
Greenwich	0	0	2	1	1	145	10	41	1	2	203
Lewisham	0	0	0	0	4	102	12	71	5	1	195
Southwark	0	0	4	0	3	72	1	98	1	0	179
Lambeth	2	0	3	1	7	110	12	95	1	3	234
Wandsworth	0	2	1	3	0	68	8	43	0	0	125
Hammersmith and Fulham	0	0	3	0	3	59	4	27	4	2	102
Kensington and Chelsea	0	1	1	0	7	57	15	35	0	0	116
Total Inner	2	6	20	8	31	889	148	731	26	17	1,878
Waltham Forest	0	0	2	1	1	110	11	33	6	1	165
Redbridge	0	1	0	1	0	199	7	17	12	0	237
Havering	0	0	0	1	0	151	2	28	6	3	191
Barking and Dagenham	0	0	1	1	3	106	0	18	5	2	136
Newham	1	1	2	1	0	121	5	37	9	4	181
Bexley	0	0	0	0	1	77	6	25	5	2	116
Bromley	0	0	1	1	2	124	5	37	5	3	178
Croydon	0	0	0	0	5	194	5	56	10	5	275
Sutton	0	0	2	0	0	87	7	19	4	0	119
Merton	0	0	0	0	1	65	2	16	5	2	91
Kingston	0	0	0	0	1	43	1	18	2	1	66
Richmond	1	0	0	0	2	37	4	20	0	3	67
Hounslow	1	0	0	0	3	144	9	28	10	14	209
Hillingdon	0	0	0	0	1	136	8	26	7	0	178
Ealing	0	0	1	0	3	118	6	43	6	5	182
Brent	0	0	1	0	1	117	6	32	3	1	161
Harrow	0	0	0	0	1	51	2	20	0	1	75
Barnet	0	0	0	1	3	206	4	53	6	4	277
Haringey	1	1	1	0	1	119	12	79	9	7	230
Enfield	0	0	0	0	1	189	5	44	8	3	250
Total Outer	4	3	11	7	30	2,394	107	649	118	61	3,384
Greater London	6	9	31	15	61	3,283	255	1,380	144	78	5,262

Table 3.19 Driver / rider casualties in the Greater London area in 2011 tabulated by age group and borough

Borough	0-15 years	16-24 years	25-59 years	60+ years	Unknown	Total
City of London	1	33	212	8	14	268
Westminster	7	114	737	42	45	945
Camden	1	85	463	21	27	597
Islington	9	132	436	23	39	639
Hackney	7	89	440	12	25	573
Tower Hamlets	6	108	515	16	32	677
Greenwich	9	106	410	19	23	567
Lewisham	15	97	492	32	25	661
Southwark	7	118	580	27	20	752
Lambeth	3	111	647	20	45	826
Wandsworth	7	125	562	29	20	743
Hammersmith and Fulham	4	85	384	18	23	514
Kensington and Chelsea	3	77	363	18	22	483
Total Inner	79	1,280	6,241	285	360	8,245
Waltham Forest	8	106	347	32	22	515
Redbridge	7	111	381	45	22	566
Havering	6	119	321	51	21	518
Barking and Dagenham	7	77	278	18	13	393
Newham	7	95	369	17	21	509
Bexley	5	88	231	32	9	365
Bromley	10	128	317	66	25	546
Croydon	5	176	486	45	39	751
Sutton	7	76	228	28	16	355
Merton	5	58	244	16	11	334
Kingston	8	76	192	25	12	313
Richmond	6	59	257	24	16	362
Hounslow	11	138	444	34	21	648
Hillingdon	7	126	415	45	44	637
Ealing	3	111	440	32	15	601
Brent	7	75	400	32	54	568
Harrow	2	58	150	20	19	249
Barnet	5	171	591	81	53	901
Haringey	3	84	351	18	41	497
Enfield	11	121	448	49	47	676
Total Outer	130	2,053	6,890	710	521	10,304
Greater London	209	3,333	13,131	995	881	18,549

Table 3.20 Passenger casualties in the Greater London area in 2011 tabulated by age group and borough

Borough	0-15 years	16-24 years	25-59 years	60+ years	Unknown	Total
City of London	2	11	19	5	6	43
Westminster	18	41	112	41	32	244
Camden	14	12	56	16	13	111
Islington	17	34	58	21	21	151
Hackney	14	16	38	13	17	98
Tower Hamlets	6	15	35	13	8	77
Greenwich	33	42	107	11	10	203
Lewisham	23	39	89	20	24	195
Southwark	34	19	86	25	15	179
Lambeth	33	30	107	30	34	234
Wandsworth	18	27	53	23	4	125
Hammersmith and Fulham	10	19	48	12	13	102
Kensington and Chelsea	14	19	55	21	7	116
Total Inner	236	324	863	251	204	1,878
Waltham Forest	22	30	81	22	10	165
Redbridge	40	65	95	17	20	237
Havering	32	54	65	26	14	191
Barking and Dagenham	26	31	55	13	11	136
Newham	21	33	90	16	21	181
Bexley	28	18	41	21	8	116
Bromley	34	54	42	30	18	178
Croydon	63	62	84	38	28	275
Sutton	23	31	30	20	15	119
Merton	19	17	37	9	9	91
Kingston	10	19	18	16	3	66
Richmond	4	13	27	14	9	67
Hounslow	36	45	91	13	24	209
Hillingdon	23	50	68	18	19	178
Ealing	21	40	85	24	12	182
Brent	23	30	62	14	32	161
Harrow	14	18	28	10	5	75
Barnet	39	54	119	43	22	277
Haringey	33	45	96	24	32	230
Enfield	44	62	83	26	35	250
Total Outer	555	771	1,297	414	347	3,384
Greater London	791	1,095	2,160	665	551	5,262

Table 3.21 Pedestrian casualties in the Greater London area in 2011 tabulated by age group and borough

Borough	0-15 years	16-24 years	25-59 years	60+ years	Unknown	Total
City of London	1	10	71	14	2	98
Westminster	30	76	249	59	35	449
Camden	23	35	111	28	27	224
Islington	27	37	83	27	21	195
Hackney	40	37	91	21	12	201
Tower Hamlets	42	45	85	13	6	191
Greenwich	52	30	58	15	3	158
Lewisham	53	38	86	20	11	208
Southwark	43	36	97	13	14	203
Lambeth	45	36	118	32	16	247
Wandsworth	30	39	89	25	7	190
Hammersmith and Fulham	28	20	78	26	4	156
Kensington and Chelsea	23	31	108	31	10	203
Total Inner	437	470	1,324	324	168	2,723
Waltham Forest	36	24	50	18	5	133
Redbridge	39	29	49	19	7	143
Havering	24	22	31	18	5	100
Barking and Dagenham	32	10	25	9	2	78
Newham	68	33	91	20	6	218
Bexley	36	15	21	16	1	89
Bromley	44	25	46	24	7	146
Croydon	60	22	80	30	13	205
Sutton	13	11	24	6	6	60
Merton	29	12	23	19	5	88
Kingston	13	12	29	7	3	64
Richmond	22	19	34	14	0	89
Hounslow	35	27	48	25	3	138
Hillingdon	42	35	32	9	13	131
Ealing	45	39	78	31	8	201
Brent	44	23	65	23	12	167
Harrow	22	13	40	14	9	98
Barnet	45	36	62	47	14	204
Haringey	42	34	79	22	11	188
Enfield	53	31	68	17	14	183
Total Outer	744	472	975	388	144	2,723
Greater London	1,181	942	2,299	712	312	5,446

Figure 3.22: Driver / rider casualties with a positive breath test 2007-2011

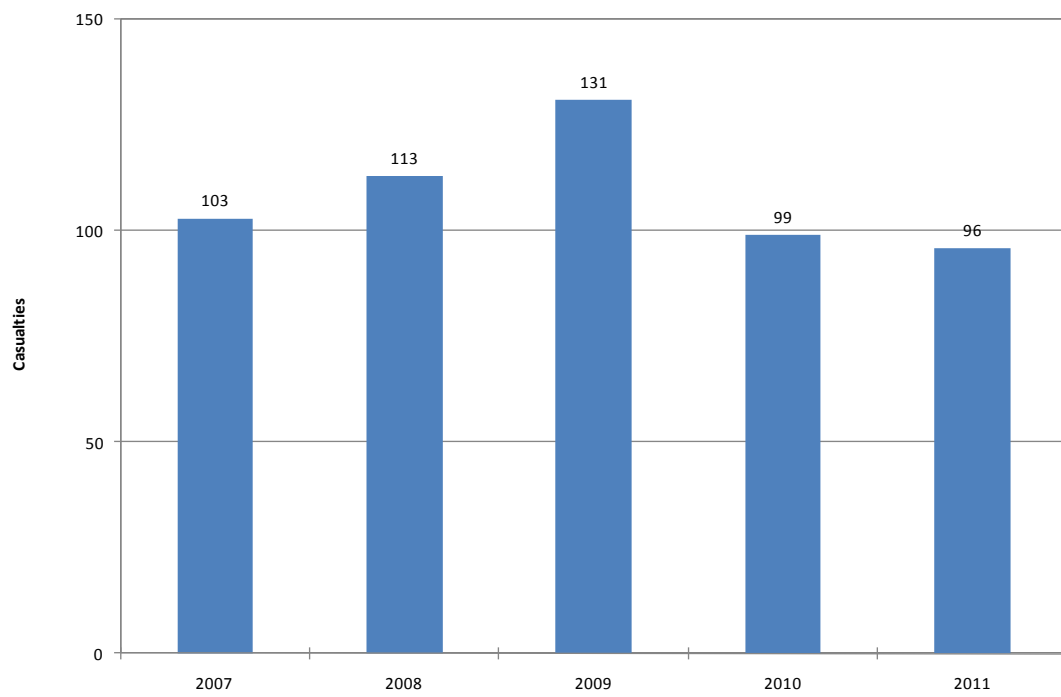


Table 3.23 Bus or coach passenger casualties in the Greater London area in 2011 tabulated by age group and borough

Borough	0-15 years	16-24 years	25-59 years	60+ years	Unknown	Total
City of London	2	1	9	5	5	22
Westminster	9	5	56	34	12	116
Camden	7	0	30	14	4	55
Islington	7	8	17	17	4	53
Hackney	7	3	19	11	9	49
Tower Hamlets	1	3	13	9	0	26
Greenwich	6	5	20	8	2	41
Lewisham	5	3	35	17	11	71
Southwark	19	2	49	19	9	98
Lambeth	9	7	44	21	14	95
Wandsworth	5	4	14	19	1	43
Hammersmith and Fulham	2	4	10	8	3	27
Kensington and Chelsea	3	0	16	14	2	35
Total Inner	82	45	332	196	76	731
Waltham Forest	3	0	13	16	1	33
Redbridge	2	1	6	6	2	17
Havering	10	1	6	9	2	28
Barking and Dagenham	2	1	5	7	3	18
Newham	6	3	19	8	1	37
Bexley	5	0	4	15	1	25
Bromley	3	3	7	16	8	37
Croydon	14	2	12	19	9	56
Sutton	2	1	2	13	1	19
Merton	3	0	4	7	2	16
Kingston	2	2	1	13	0	18
Richmond	1	1	7	10	1	20
Hounslow	6	6	11	2	3	28
Hillingdon	4	3	9	8	2	26
Ealing	2	8	19	13	1	43
Brent	6	1	14	7	4	32
Harrow	6	0	8	5	1	20
Barnet	6	2	16	22	7	53
Haringey	10	3	35	19	12	79
Enfield	6	1	19	10	8	44
Total Outer	99	39	217	225	69	649
Greater London	181	84	549	421	145	1,380

Table 3.24 Pedestrian casualties in the Greater London area in 2011 tabulated by associated vehicle type and time of day

Time	Motor cycle										Goods				Other		Total		
	Pedal cycle		50 to 125cc		over 500cc		Car		Taxi coach		Bus or up to 3.5t		3.5 - 7.5t		over 7.5t			Other motor vehicle	Other non-motor vehicle
	up to 50cc	50cc to 125cc	125cc to 500cc	over 500cc	Car	Taxi coach	MGW	up to 3.5t	MGW	3.5 - 7.5t	MGW	over 7.5t	MGW	over 7.5t					
00.00-00.59	0	2	3	0	0	1	64	11	14	2	0	0	1	0	0	0	0	0	98
01.00-01.59	1	0	0	0	0	0	48	9	5	6	0	0	0	0	1	0	0	0	70
02.00-02.59	0	0	0	0	0	0	42	9	2	2	0	0	2	0	0	0	0	0	57
03.00-03.59	1	0	0	0	0	0	31	7	2	2	0	0	0	0	2	0	0	0	45
04.00-04.59	0	0	0	0	0	0	23	6	5	2	0	0	0	0	0	0	0	0	36
05.00-05.59	0	0	1	0	0	1	11	5	4	4	1	0	0	0	2	0	0	0	29
06.00-06.59	1	0	0	0	0	3	31	1	3	5	0	0	2	1	1	0	0	0	47
07.00-07.59	9	3	9	0	0	10	105	7	6	13	1	2	2	3	0	0	0	0	168
08.00-08.59	26	4	22	7	19	19	273	5	33	29	1	3	3	6	0	0	0	0	428
09.00-09.59	10	1	18	5	12	186	10	12	12	19	6	2	2	4	1	0	0	0	286
10.00-10.59	4	2	5	1	7	120	13	14	14	33	1	4	4	4	0	0	0	0	208
11.00-11.59	8	0	10	3	6	155	6	19	28	4	4	3	4	4	0	0	0	0	246
12.00-12.59	12	8	10	1	8	192	6	17	24	1	2	2	2	5	1	0	0	0	287
13.00-13.59	11	2	12	3	4	210	12	29	29	6	10	6	10	6	0	0	0	0	334
14.00-14.59	10	2	12	5	4	199	14	23	24	2	2	1	1	3	0	0	0	0	299
15.00-15.59	13	5	15	4	8	390	12	42	31	8	3	2	3	2	0	0	0	0	533
16.00-16.59	18	5	21	13	12	305	20	21	35	2	6	2	6	6	0	0	0	0	464
17.00-17.59	15	5	23	7	17	282	23	27	32	2	3	2	3	5	0	0	0	0	441
18.00-18.59	18	4	17	8	20	268	17	30	24	0	2	2	2	3	0	0	0	0	411
19.00-19.59	11	5	16	3	8	213	14	20	17	0	1	1	1	4	0	0	0	0	312
20.00-20.59	5	3	14	2	8	152	16	13	9	0	0	1	1	3	0	0	0	0	226
21.00-21.59	2	1	5	0	7	126	4	9	7	0	0	0	0	1	0	0	0	0	162
22.00-22.59	1	2	4	0	1	107	19	11	2	1	1	0	0	0	0	0	0	0	148
23.00-23.59	2	0	2	1	1	82	5	15	3	0	0	0	0	0	0	0	0	0	111
Total	178	54	219	63	157	3,615	251	376	382	36	48	65	2	5,446					

Table 3.25 Casualties in the Greater London area in 2011 tabulated by casualty class, gender and borough

Borough	Driver		Passenger		Pedestrian		Total
	Male	Female	Male	Female	Male	Female	
City of London	209	59	13	30	44	54	409
Westminster	767	178	87	157	252	197	1,638
Camden	469	128	32	79	118	106	932
Islington	504	135	73	78	96	99	985
Hackney	408	165	47	51	111	90	872
Tower Hamlets	539	138	33	44	113	78	945
Greenwich	403	164	84	119	85	73	928
Lewisham	511	150	71	124	106	102	1,064
Southwark	584	168	68	111	124	79	1,134
Lambeth	632	194	93	141	149	98	1,307
Wandsworth	557	186	37	88	102	88	1,058
Hammersmith and Fulham	411	103	40	62	77	79	772
Kensington and Chelsea	387	96	52	64	104	99	802
Total Inner	6,381	1,864	730	1,148	1,481	1,242	12,846
Waltham Forest	367	148	78	87	76	57	813
Redbridge	396	170	113	124	71	72	946
Havering	322	196	90	101	44	56	809
Barking and Dagenham	267	126	62	74	42	36	607
Newham	391	118	92	89	131	87	908
Bexley	234	131	34	82	51	38	570
Bromley	340	206	70	108	74	72	870
Croydon	518	233	117	158	114	91	1,231
Sutton	216	139	43	76	33	27	534
Merton	222	112	47	44	54	34	513
Kingston	224	89	29	37	30	34	443
Richmond	255	107	23	44	39	50	518
Hounslow	457	191	90	119	70	68	995
Hillingdon	424	213	71	107	69	62	946
Ealing	448	153	69	113	120	81	984
Brent	422	146	69	92	109	58	896
Harrow	157	92	37	38	55	43	422
Barnet	600	301	112	165	115	89	1,382
Haringey	369	128	105	125	94	94	915
Enfield	470	206	101	149	101	82	1,109
Total Outer	7,099	3,205	1,452	1,932	1,492	1,231	16,411
Greater London	13,480	5,069	2,182	3,080	2,973	2,473	29,257

Table 3.26 Casualties in the Greater London area in 2011 tabulated by highway authority and borough

Borough	TLRN ¹	Highways		Total
		Agency	Borough	
City of London	169	0	240	409
Westminster	483	0	1,155	1,638
Camden	270	0	662	932
Islington	528	0	457	985
Hackney	439	0	433	872
Tower Hamlets	523	0	422	945
Greenwich	310	0	618	928
Lewisham	541	0	523	1,064
Southwark	534	0	600	1,134
Lambeth	806	0	501	1,307
Wandsworth	560	0	498	1,058
Hammersmith and Fulham	88	0	684	772
Kensington and Chelsea	260	0	542	802
Total Inner	5,511	0	7,335	12,846
Waltham Forest	97	0	716	813
Redbridge	249	6	691	946
Havering	161	74	574	809
Barking and Dagenham	133	0	474	607
Newham	156	0	752	908
Bexley	54	0	516	570
Bromley	113	0	757	870
Croydon	276	0	955	1,231
Sutton	158	0	376	534
Merton	89	0	424	513
Kingston	99	0	344	443
Richmond	127	0	391	518
Hounslow	404	53	538	995
Hillingdon	137	89	720	946
Ealing	230	0	754	984
Brent	77	0	819	896
Harrow	0	0	422	422
Barnet	414	16	952	1,382
Haringey	216	0	699	915
Enfield	263	83	763	1,109
Total Outer	3,453	321	12,637	16,411
Greater London	8,964	321	19,972	29,257

¹ TLRN is the Transport for London Road Network.

Note: the highway authority is allocated according to the category of the road at which the collision occurred. For a collision occurring at a junction where the collision cannot be clearly allocated to a particular road the highway authority of the major road is chosen.

Table 3.27 Pedal cycle rider and passenger casualties in the Greater London area in 2011 tabulated by age group and borough

Borough	0-15 years	16-24 years	25-59 years	60+ years	Unknown	Total
City of London	1	18	116	2	12	149
Westminster	7	43	288	13	20	371
Camden	0	39	220	6	19	284
Islington	9	50	196	6	18	279
Hackney	7	39	195	6	12	259
Tower Hamlets	6	29	155	4	11	205
Greenwich	6	14	54	1	2	77
Lewisham	15	12	105	3	7	142
Southwark	6	34	229	5	9	283
Lambeth	5	34	224	4	18	285
Wandsworth	7	28	211	4	8	258
Hammersmith and Fulham	4	23	131	7	6	171
Kensington and Chelsea	3	31	128	6	9	177
Total Inner	76	394	2,252	67	151	2,940
Waltham Forest	8	18	80	3	4	113
Redbridge	7	8	37	5	3	60
Havering	6	8	23	2	5	44
Barking and Dagenham	6	9	28	0	1	44
Newham	8	14	71	2	2	97
Bexley	5	5	14	4	1	29
Bromley	10	15	50	7	6	88
Croydon	5	20	77	5	8	115
Sutton	6	3	37	2	0	48
Merton	5	8	51	2	0	66
Kingston	8	15	57	3	4	87
Richmond	6	17	94	6	6	129
Hounslow	12	24	73	6	5	120
Hillingdon	7	8	39	2	7	63
Ealing	3	13	86	6	2	110
Brent	7	11	54	3	6	81
Harrow	2	5	16	3	4	30
Barnet	5	15	45	2	4	71
Haringey	3	14	67	1	10	95
Enfield	11	14	32	3	7	67
Total Outer	130	244	1,031	67	85	1,557
Greater London	206	638	3,283	134	236	4,497

Table 3.28 Powered two wheeler rider and passenger casualties in the Greater London area in 2011 tabulated by age group and borough

Borough	0-15 years	16-24 years	25-59 years	60+ years	Unknown	Total
City of London	0	11	56	2	2	71
Westminster	0	48	239	3	14	304
Camden	1	30	137	0	4	172
Islington	0	58	119	3	8	188
Hackney	0	24	95	1	6	126
Tower Hamlets	0	34	156	4	8	202
Greenwich	2	31	91	1	6	131
Lewisham	0	45	145	4	6	200
Southwark	1	55	167	5	7	235
Lambeth	0	45	218	5	15	283
Wandsworth	2	77	195	5	7	286
Hammersmith and Fulham	1	49	126	1	10	187
Kensington and Chelsea	0	39	151	5	10	205
Total Inner	7	546	1,895	39	103	2,590
Waltham Forest	0	32	54	5	4	95
Redbridge	0	25	54	2	4	85
Havering	0	23	37	7	1	68
Barking and Dagenham	0	21	42	0	2	65
Newham	0	20	58	0	3	81
Bexley	0	41	36	2	0	79
Bromley	0	24	58	3	4	89
Croydon	1	49	83	1	11	145
Sutton	1	24	46	3	4	78
Merton	0	19	62	4	4	89
Kingston	0	20	52	2	3	77
Richmond	0	18	82	1	4	105
Hounslow	0	41	103	2	4	150
Hillingdon	0	37	71	2	7	117
Ealing	0	53	100	2	6	161
Brent	0	29	112	2	21	164
Harrow	0	19	17	3	5	44
Barnet	0	34	119	6	12	171
Haringey	0	27	85	2	8	122
Enfield	0	22	69	2	8	101
Total Outer	2	578	1,340	51	115	2,086
Greater London	9	1,124	3,235	90	218	4,676

Table 3.29 Child casualties (0-15 years) in the Greater London area in 2011 by severity, highway authority and borough

Borough	TLRN ¹				Borough				All roads ²			
	Fatal	Serious	Slight	Total	Fatal	Serious	Slight	Total	Fatal	Serious	Slight	Total
City of London	0	0	0	0	0	1	3	4	0	1	3	4
Westminster	0	2	12	14	1	2	38	41	1	4	50	55
Camden	0	0	13	13	0	4	21	25	0	4	34	38
Islington	0	2	18	20	0	3	30	33	0	5	48	53
Hackney	0	3	27	30	0	4	27	31	0	7	54	61
Tower Hamlets	0	3	11	14	0	6	34	40	0	9	45	54
Greenwich	1	4	15	20	0	15	59	74	1	19	74	94
Lewisham	0	3	19	22	0	6	63	69	0	9	82	91
Southwark	0	2	19	21	0	7	56	63	0	9	75	84
Lambeth	0	1	33	34	1	6	40	47	1	7	73	81
Wandsworth	0	3	23	26	0	5	24	29	0	8	47	55
Hammersmith and Fulham	0	1	2	3	0	6	33	39	0	7	35	42
Kensington and Chelsea	0	1	6	7	0	2	31	33	0	3	37	40
Total Inner	1	25	198	224	2	67	459	528	3	92	657	752
Waltham Forest	0	0	4	4	0	7	55	62	0	7	59	66
Redbridge	0	1	11	12	0	6	67	73	0	7	79	86
Havering	0	0	6	6	1	7	45	53	1	7	54	62
Barking and Dagenham	0	0	4	4	1	6	54	61	1	6	58	65
Newham	0	1	5	6	0	8	82	90	0	9	87	96
Bexley	1	0	0	1	0	6	62	68	1	6	62	69
Bromley	0	0	6	6	0	8	74	82	0	8	80	88
Croydon	0	2	22	24	1	7	96	104	1	9	118	128
Sutton	0	0	7	7	0	4	32	36	0	4	39	43
Merton	0	1	7	8	0	2	43	45	0	3	50	53
Kingston	0	2	3	5	0	0	26	26	0	2	29	31
Richmond	0	1	3	4	0	4	24	28	0	5	27	32
Hounslow	0	0	17	17	0	6	56	62	0	6	76	82
Hillingdon	0	0	2	2	0	9	60	69	0	9	63	72
Ealing	0	0	5	5	0	7	57	64	0	7	62	69
Brent	0	0	1	1	0	4	69	73	0	4	70	74
Harrow	0	0	0	0	0	1	37	38	0	1	37	38
Barnet	0	0	14	14	0	7	68	75	0	7	82	89
Haringey	0	3	9	12	0	9	57	66	0	12	66	78
Enfield	0	1	11	12	0	9	84	93	0	12	96	108
Total Outer	1	12	137	150	3	117	1148	1268	4	131	1294	1429
Greater London	2	37	335	374	5	184	1607	1796	7	223	1951	2181

¹ TLRN is the Transport for London Road Network.

² Includes Highways Agency roads

Note: the highway authority is allocated according to the category of the road at which the collision occurred. For a collision occurring at a junction where the collision cannot be clearly allocated to a particular road the highway authority of the major road is chosen.

Table 3.30 Child pedestrian casualties (0-15 years) in the Greater London area in 2011 by severity, highway authority and borough

Borough	TLRN ¹				Borough				All roads ²			
	Fatal	Serious	Slight	Total	Fatal	Serious	Slight	Total	Fatal	Serious	Slight	Total
City of London	0	0	0	0	0	1	0	1	0	1	0	1
Westminster	0	2	7	9	1	2	18	21	1	4	25	30
Camden	0	0	6	6	0	3	14	17	0	3	20	23
Islington	0	1	10	11	0	2	14	16	0	3	24	27
Hackney	0	3	14	17	0	3	20	23	0	6	34	40
Tower Hamlets	0	3	7	10	0	5	27	32	0	8	34	42
Greenwich	0	2	6	8	0	10	34	44	0	12	40	52
Lewisham	0	2	7	9	0	6	38	44	0	8	45	53
Southwark	0	1	9	10	0	5	28	33	0	6	37	43
Lambeth	0	1	13	14	1	4	26	31	1	5	39	45
Wandsworth	0	1	11	12	0	5	13	18	0	6	24	30
Hammersmith and Fulham	0	0	1	1	0	6	21	27	0	6	22	28
Kensington and Chelsea	0	0	3	3	0	2	18	20	0	2	21	23
Total Inner	0	16	94	110	2	54	271	327	2	70	365	437
Waltham Forest	0	0	0	0	0	6	30	36	0	6	30	36
Redbridge	0	0	1	1	0	4	34	38	0	4	35	39
Havering	0	0	0	0	1	5	18	24	1	5	18	24
Barking and Dagenham	0	0	1	1	0	4	27	31	0	4	28	32
Newham	0	1	0	1	0	6	61	67	0	7	61	68
Bexley	1	0	0	1	0	5	30	35	1	5	30	36
Bromley	0	0	1	1	0	5	38	43	0	5	39	44
Croydon	0	2	5	7	1	6	46	53	1	8	51	60
Sutton	0	0	0	0	0	3	10	13	0	3	10	13
Merton	0	1	1	2	0	2	25	27	0	3	26	29
Kingston	0	1	1	2	0	0	11	11	0	1	12	13
Richmond	0	1	3	4	0	3	15	18	0	4	18	22
Hounslow	0	0	3	3	0	6	26	32	0	6	29	35
Hillingdon	0	0	0	0	0	9	33	42	0	9	33	42
Ealing	0	0	1	1	0	6	38	44	0	6	39	45
Brent	0	0	0	0	0	1	43	44	0	1	43	44
Harrow	0	0	0	0	0	1	21	22	0	1	21	22
Barnet	0	0	3	3	0	4	38	42	0	4	41	45
Haringey	0	3	5	8	0	8	26	34	0	11	31	42
Enfield	0	0	5	5	0	7	41	48	0	7	46	53
Total Outer	1	9	30	40	2	91	611	704	3	100	641	744
Greater London	1	25	124	150	4	145	882	1031	5	170	1006	1181

¹ TLRN is the Transport for London Road Network.

² Includes Highways Agency roads

Note: the highway authority is allocated according to the category of the road at which the collision occurred. For a collision occurring at a junction where the collision cannot be clearly allocated to a particular road the highway authority of the major road is chosen.

Table 3.31 Casualties in Greater London on the TLRN¹ in 2011 by mode of travel and borough

Borough	Pedest- rians	Pedal cyclists	Powered two wheelers	Car	Taxi	Bus or coach	Goods vehicle	Other	Total
City of London	29	59	36	22	7	11	5	0	169
Westminster	88	95	101	108	24	54	10	3	483
Camden	54	56	48	73	13	21	4	1	270
Islington	111	128	95	125	27	37	3	2	528
Hackney	108	114	72	107	2	31	5	0	439
Tower Hamlets	87	109	142	144	9	20	11	1	523
Greenwich	19	20	54	194	11	1	10	1	310
Lewisham	83	74	129	178	13	49	12	3	541
Southwark	86	149	127	109	10	43	10	0	534
Lambeth	132	185	174	219	13	70	6	7	806
Wandsworth	92	138	165	127	13	20	4	1	560
Hammersmith and Fulham	6	8	19	43	2	5	3	2	88
Kensington and Chelsea	48	47	71	67	17	9	1	0	260
Total Inner	943	1,182	1,233	1,516	161	371	84	21	5,511
Waltham Forest	1	4	8	72	3	2	5	2	97
Redbridge	8	4	26	189	1	3	18	0	249
Havering	6	6	16	112	2	2	15	2	161
Barking and Dagenham	2	3	14	96	1	0	15	2	133
Newham	5	4	23	104	3	2	15	0	156
Bexley	1	2	8	40	0	0	3	0	54
Bromley	12	8	13	64	0	11	4	1	113
Croydon	31	23	45	150	5	7	13	2	276
Sutton	15	9	21	104	3	0	6	0	158
Merton	6	14	15	42	1	5	6	0	89
Kingston	8	14	17	51	2	4	3	0	99
Richmond	10	25	40	42	3	1	3	3	127
Hounslow	12	28	64	267	15	3	15	0	404
Hillingdon	5	5	10	105	4	3	5	0	137
Ealing	14	6	47	129	10	5	19	0	230
Brent	1	1	12	56	4	0	3	0	77
Harrow	0	0	0	0	0	0	0	0	0
Barnet	13	11	42	315	3	9	18	3	414
Haringey	43	20	36	89	5	21	1	1	216
Enfield	19	9	28	181	5	6	11	4	263
Total Outer	212	196	485	2,208	70	84	178	20	3,453
Greater London	1,155	1,378	1,718	3,724	231	455	262	41	8,964

¹ TLRN is the Transport for London Road Network.

Note: the highway authority is allocated according to the category of the road at which the collision occurred. For a collision occurring at a junction where the collision cannot be clearly allocated to a particular road the highway authority of the major road is chosen.

Table 3.32 Casualties in Greater London on borough roads in 2011 by mode of travel and borough

Borough	Pedest- rians	Pedal cyclists	Powered two wheelers	Car	Taxi	Bus or coach	Goods vehicle	Other	Total
City of London	69	90	35	19	9	11	3	4	240
Westminster	361	276	203	156	63	71	21	4	1,155
Camden	170	228	124	86	7	36	8	3	662
Islington	84	151	93	93	4	19	7	6	457
Hackney	93	145	54	106	4	21	10	0	433
Tower Hamlets	104	96	60	144	3	10	4	1	422
Greenwich	139	57	77	270	16	43	14	2	618
Lewisham	125	68	71	208	14	25	11	1	523
Southwark	117	134	108	165	7	58	10	1	600
Lambeth	115	100	109	131	9	28	8	1	501
Wandsworth	98	120	121	119	7	24	7	2	498
Hammersmith and Fulham	150	163	168	153	6	26	13	5	684
Kensington and Chelsea	155	130	134	79	11	28	5	0	542
Total Inner	1,780	1,758	1,357	1,729	160	400	121	30	7,335
Waltham Forest	132	109	87	328	13	35	11	1	716
Redbridge	135	56	59	401	11	16	13	0	691
Havering	94	38	50	351	2	28	8	3	574
Barking and Dagenham	76	41	51	269	2	19	11	5	474
Newham	213	93	58	323	10	38	10	7	752
Bexley	88	27	71	271	10	27	18	4	516
Bromley	134	80	76	397	8	31	26	5	757
Croydon	174	92	100	484	18	58	20	9	955
Sutton	45	39	57	201	11	19	4	0	376
Merton	82	52	74	180	11	12	11	2	424
Kingston	56	73	60	129	5	14	3	4	344
Richmond	79	104	65	114	3	20	3	3	391
Hounslow	126	92	81	191	5	26	6	11	538
Hillingdon	125	58	104	377	11	27	16	2	720
Ealing	187	104	114	282	5	40	15	7	754
Brent	166	80	152	364	7	34	12	4	819
Harrow	98	30	44	217	3	21	7	2	422
Barnet	191	60	128	496	8	47	17	5	952
Haringey	145	75	86	285	17	63	17	11	699
Enfield	163	58	68	417	5	40	8	4	763
Total Outer	2,509	1,361	1,585	6,077	165	615	236	89	12,637
Greater London	4,289	3,119	2,942	7,806	325	1,015	357	119	19,972

Note: the highway authority is allocated according to the category of the road at which the collision occurred. For a collision occurring at a junction where the collision cannot be clearly allocated to a particular road the highway authority of the major road is chosen.

Table 3.33 Casualties in Greater London on Highways Agency roads in 2011 by mode of travel and borough

Borough	Pedest- rians	Pedal cyclists	Powered two wheelers	Car	Taxi	Bus or coach	Goods vehicle	Other	Total
City of London	0	0	0	0	0	0	0	0	0
Westminster	0	0	0	0	0	0	0	0	0
Camden	0	0	0	0	0	0	0	0	0
Islington	0	0	0	0	0	0	0	0	0
Hackney	0	0	0	0	0	0	0	0	0
Tower Hamlets	0	0	0	0	0	0	0	0	0
Greenwich	0	0	0	0	0	0	0	0	0
Lewisham	0	0	0	0	0	0	0	0	0
Southwark	0	0	0	0	0	0	0	0	0
Lambeth	0	0	0	0	0	0	0	0	0
Wandsworth	0	0	0	0	0	0	0	0	0
Hammersmith and Fulham	0	0	0	0	0	0	0	0	0
Kensington and Chelsea	0	0	0	0	0	0	0	0	0
Total Inner	0	0	0	0	0	0	0	0	0
Waltham Forest	0	0	0	0	0	0	0	0	0
Redbridge	0	0	0	6	0	0	0	0	6
Havering	0	0	2	68	0	0	3	1	74
Barking and Dagenham	0	0	0	0	0	0	0	0	0
Newham	0	0	0	0	0	0	0	0	0
Bexley	0	0	0	0	0	0	0	0	0
Bromley	0	0	0	0	0	0	0	0	0
Croydon	0	0	0	0	0	0	0	0	0
Sutton	0	0	0	0	0	0	0	0	0
Merton	0	0	0	0	0	0	0	0	0
Kingston	0	0	0	0	0	0	0	0	0
Richmond	0	0	0	0	0	0	0	0	0
Hounslow	0	0	5	28	9	0	6	5	53
Hillingdon	1	0	3	79	0	0	6	0	89
Ealing	0	0	0	0	0	0	0	0	0
Brent	0	0	0	0	0	0	0	0	0
Harrow	0	0	0	0	0	0	0	0	0
Barnet	0	0	1	14	0	0	1	0	16
Haringey	0	0	0	0	0	0	0	0	0
Enfield	1	0	5	67	0	0	10	0	83
Total Outer	2	0	16	262	9	0	26	6	321
Greater London	2	0	16	262	9	0	26	6	321

Note: the highway authority is allocated according to the category of the road at which the collision occurred. For a collision occurring at a junction where the collision cannot be clearly allocated to a particular road the highway authority of the major road is chosen.

Table 3.34 Casualties in Greater London on all roads in 2011 by mode of travel and borough

Borough	Pedest- rians	Pedal cyclists	Powered	Car	Taxi	Bus or coach	Goods vehicle	Other	Total
			two wheelers						
City of London	98	149	71	41	16	22	8	4	409
Westminster	449	371	304	264	87	125	31	7	1,638
Camden	224	284	172	159	20	57	12	4	932
Islington	195	279	188	218	31	56	10	8	985
Hackney	201	259	126	213	6	52	15	0	872
Tower Hamlets	191	205	202	288	12	30	15	2	945
Greenwich	158	77	131	464	27	44	24	3	928
Lewisham	208	142	200	386	27	74	23	4	1,064
Southwark	203	283	235	274	17	101	20	1	1,134
Lambeth	247	285	283	350	22	98	14	8	1,307
Wandsworth	190	258	286	246	20	44	11	3	1,058
Hammersmith and Fulham	156	171	187	196	8	31	16	7	772
Kensington and Chelsea	203	177	205	146	28	37	6	0	802
Total Inner	2,723	2,940	2,590	3,245	321	771	205	51	12,846
Waltham Forest	133	113	95	400	16	37	16	3	813
Redbridge	143	60	85	596	12	19	31	0	946
Havering	100	44	68	531	4	30	26	6	809
Barking and Dagenham	78	44	65	365	3	19	26	7	607
Newham	218	97	81	427	13	40	25	7	908
Bexley	89	29	79	311	10	27	21	4	570
Bromley	146	88	89	461	8	42	30	6	870
Croydon	205	115	145	634	23	65	33	11	1,231
Sutton	60	48	78	305	14	19	10	0	534
Merton	88	66	89	222	12	17	17	2	513
Kingston	64	87	77	180	7	18	6	4	443
Richmond	89	129	105	156	6	21	6	6	518
Hounslow	138	120	150	486	29	29	27	16	995
Hillingdon	131	63	117	561	15	30	27	2	946
Ealing	201	110	161	411	15	45	34	7	984
Brent	167	81	164	420	11	34	15	4	896
Harrow	98	30	44	217	3	21	7	2	422
Barnet	204	71	171	825	11	56	36	8	1,382
Haringey	188	95	122	374	22	84	18	12	915
Enfield	183	67	101	665	10	46	29	8	1,109
Total Outer	2,723	1,557	2,086	8,547	244	699	440	115	16,411
Greater London	5,446	4,497	4,676	11,792	565	1,470	645	166	29,257

Vehicle data 2011

Table 4.1 Vehicles involved in collisions in the Greater London area in 2011 tabulated by vehicle type and borough

Borough	Motor cycle						Goods				Other		Total		
	Pedal cycle		50 to 125cc		over 500cc		Bus or up to 3.5t		3.5 - 7.5t over 7.5t		MGW	MGW		motor vehicle	non-motor vehicle
	50cc	125cc	500cc	500cc	500cc	over 500cc	Car	Taxi	coach	MGW	MGW	MGW		MGW	
City of London	157	5	39	19	30	151	78	45	44	7	10	7	0	592	
Westminster	404	17	185	39	112	903	263	217	184	20	22	18	1	2,385	
Camden	313	15	97	19	69	591	91	93	101	8	22	15	0	1,434	
Islington	298	35	121	19	56	735	47	66	78	6	10	13	1	1,485	
Hackney	266	21	72	15	35	765	31	85	73	6	6	10	0	1,385	
Tower Hamlets	218	19	103	18	80	911	41	51	84	12	15	10	0	1,562	
Greenwich	78	14	57	5	61	883	32	76	99	6	20	12	0	1,343	
Lewisham	144	30	76	19	93	941	38	101	96	8	7	11	0	1,564	
Southwark	291	20	132	23	88	817	64	123	136	6	16	9	0	1,725	
Lambeth	296	28	141	38	112	975	75	126	119	13	13	20	3	1,959	
Wandsworth	270	43	167	22	91	869	47	69	98	5	4	9	0	1,694	
Hammersmith and Fulham	181	19	122	12	48	602	39	52	72	11	12	14	1	1,185	
Kensington and Chelsea	184	21	121	13	64	572	87	60	71	7	11	13	0	1,224	
Total Inner	3,100	287	1,433	261	939	9,715	933	1,164	1,255	115	168	161	6	19,537	
Waltham Forest	114	16	51	15	19	838	23	44	63	8	10	4	0	1,205	
Redbridge	62	6	43	13	28	1,079	15	28	68	8	14	6	0	1,370	
Havering	44	6	33	11	21	869	12	41	56	16	23	9	0	1,141	
Barking and Dagenham	44	10	24	6	32	661	6	27	59	5	16	9	1	900	
Newham	100	4	44	18	23	915	18	58	63	10	14	8	1	1,276	
Bexley	30	11	40	9	22	577	15	32	60	9	12	5	0	822	
Bromley	89	11	34	5	41	883	11	50	83	5	8	10	0	1,230	
Croydon	115	10	63	28	51	1,230	48	72	102	8	17	17	0	1,761	
Sutton	49	13	32	9	28	561	13	21	44	4	4	4	0	782	
Merton	67	12	38	3	41	461	17	30	46	7	6	7	0	735	
Kingston	91	12	34	3	34	451	10	29	18	3	6	7	0	698	
Richmond	134	11	50	6	49	495	9	34	32	3	4	6	1	834	
Hounslow	124	13	70	7	61	947	48	41	111	4	21	8	0	1,455	
Hillingdon	66	23	47	14	45	1,052	14	35	71	6	20	4	1	1,398	
Ealing	113	16	93	6	56	963	25	57	110	5	19	7	0	1,470	
Brent	84	28	87	11	49	948	15	56	63	4	11	8	0	1,364	
Harrow	31	9	25	2	13	480	6	25	22	3	2	3	0	621	
Barnet	73	12	84	31	57	1,545	20	73	88	10	20	36	1	2,050	
Haringey	98	25	65	17	38	806	20	96	54	4	8	25	0	1,256	
Enfield	68	18	32	12	43	1,163	9	54	99	3	23	16	0	1,540	
Total Outer	1,596	266	989	226	751	16,924	354	903	1,312	125	258	199	5	23,908	
Greater London	4,696	553	2,422	487	1,690	26,639	1,287	2,067	2,567	240	426	360	11	43,445	

Table 4.2 Vehicles involved in collisions in the Greater London area in 2011 tabulated by driver age and borough

Borough	under 17 years	17 years	18 years	19 years	20 years	21 years	22-24 years	25-28 years	29-34 years	35-54 years	55-64 years	65+ years	Not known	Total
City of London	1	0	2	2	4	6	33	64	101	241	49	8	81	592
Westminster	12	3	7	17	16	26	108	218	330	879	180	75	514	2,385
Camden	2	2	8	11	18	21	71	158	192	484	100	53	314	1,434
Islington	16	4	14	11	21	19	106	167	223	443	98	38	325	1,485
Hackney	8	4	5	10	27	31	71	163	212	479	79	26	270	1,385
Tower Hamlets	8	6	14	11	29	34	92	178	251	495	61	26	357	1,562
Greenwich	15	8	18	15	20	30	83	120	147	519	95	37	236	1,343
Lewisham	19	5	8	23	25	22	95	147	196	586	95	43	300	1,564
Southwark	11	8	7	17	25	29	102	168	263	649	104	32	310	1,725
Lambeth	10	3	11	13	15	19	112	200	280	736	121	48	391	1,959
Wandsworth	19	8	21	18	22	19	97	179	280	581	94	47	309	1,694
Hammersmith and Fulham	5	12	8	11	9	18	66	120	183	432	64	41	216	1,185
Kensington and Chelsea	5	1	4	12	10	16	63	107	183	446	80	56	241	1,224
Total Inner	131	64	127	171	241	290	1,099	1,989	2,841	6,970	1,220	530	3,864	19,537
Waltham Forest	9	8	10	21	32	17	79	130	145	374	69	38	273	1,205
Redbridge	8	6	11	24	22	24	84	132	177	440	93	51	298	1,370
Havering	7	14	18	24	39	25	57	94	83	387	120	64	209	1,141
Barking and Dagenham	10	5	17	11	24	13	53	85	94	328	68	25	167	900
Newham	8	10	7	20	20	20	87	138	179	393	62	21	311	1,276
Bexley	12	15	19	23	18	15	38	66	92	273	58	46	147	822
Bromley	15	17	27	25	24	18	82	81	122	388	108	94	229	1,230
Croydon	11	17	25	31	36	44	113	125	224	554	102	76	403	1,761
Sutton	14	10	15	12	18	15	50	65	95	251	57	45	135	782
Merton	7	5	7	9	9	10	46	68	99	274	48	25	128	735
Kingston	13	5	10	9	16	21	47	59	89	225	53	41	110	698
Richmond	8	9	12	14	15	10	44	65	113	283	62	51	148	834
Hounslow	15	16	16	18	25	32	94	132	195	501	113	47	251	1,455
Hillingdon	12	9	21	26	19	32	92	123	178	439	109	44	294	1,398
Ealing	7	4	15	21	24	23	87	168	211	485	94	40	291	1,470
Brent	7	3	7	13	18	11	75	137	219	404	88	38	344	1,364
Harrow	5	7	7	12	14	13	46	47	72	172	42	38	146	621
Barnet	8	10	34	16	30	35	138	179	240	682	145	117	416	2,050
Haringey	8	8	9	19	13	16	71	119	184	393	66	36	314	1,256
Enfield	15	10	14	24	34	23	94	137	180	483	92	55	379	1,540
Total Outer	199	188	301	372	450	417	1,477	2,150	2,991	7,729	1,649	992	4,993	23,908
Greater London	330	252	428	543	691	707	2,576	4,139	5,832	14,699	2,869	1,522	8,857	43,445

Table 4.3 Vehicles involved in collisions in the Greater London area in 2011 tabulated by skidding/overturning and borough

Borough	Skidded & Skidded	overturned	Jack-knifed	Jack-knifed & overturned	Overturned	No skid/ overturn	Total
City of London	5	0	0	0	0	587	592
Westminster	43	1	0	0	0	2,341	2,385
Camden	26	1	0	0	2	1,405	1,434
Islington	12	0	0	0	1	1,472	1,485
Hackney	9	0	0	0	2	1,374	1,385
Tower Hamlets	24	0	0	0	4	1,534	1,562
Greenwich	47	0	0	0	3	1,293	1,343
Lewisham	27	0	0	0	1	1,536	1,564
Southwark	31	1	0	0	2	1,691	1,725
Lambeth	62	1	0	0	2	1,894	1,959
Wandsworth	100	0	0	0	3	1,591	1,694
Hammersmith and Fulham	8	1	0	0	0	1,176	1,185
Kensington and Chelsea	9	1	0	0	2	1,212	1,224
Total Inner	403	6	0	0	22	19,106	19,537
Waltham Forest	15	2	0	0	4	1,184	1,205
Redbridge	36	1	0	0	7	1,326	1,370
Havering	28	2	0	0	7	1,104	1,141
Barking and Dagenham	31	1	0	0	8	860	900
Newham	16	1	0	0	1	1,258	1,276
Bexley	32	5	0	0	1	784	822
Bromley	34	4	0	0	3	1,189	1,230
Croydon	88	5	0	0	8	1,660	1,761
Sutton	31	0	0	0	10	741	782
Merton	7	0	0	0	2	726	735
Kingston	9	1	0	0	2	686	698
Richmond	10	2	0	0	3	819	834
Hounslow	81	5	0	0	8	1,361	1,455
Hillingdon	23	1	0	0	2	1,372	1,398
Ealing	79	6	0	0	5	1,380	1,470
Brent	11	0	0	0	2	1,351	1,364
Harrow	10	1	0	0	4	606	621
Barnet	35	3	0	0	5	2,007	2,050
Haringey	17	1	0	0	1	1,237	1,256
Enfield	35	1	0	0	3	1,501	1,540
Total Outer	628	42	0	0	86	23,152	23,908
Greater London	1,031	48	0	0	108	42,258	43,445

Table 4.4 Drivers of motor vehicles involved in collisions in the Greater London area in 2011 tabulated by breath test and borough

Borough	Positive	Negative	Not required to provide	Failed to provide	Driver not contacted	Not provided (medical reasons)	Total
City of London	3	288	27	0	105	12	435
Westminster	10	718	504	0	697	51	1,980
Camden	4	349	313	1	424	30	1,121
Islington	1	542	276	6	331	30	1,186
Hackney	3	767	78	2	257	12	1,119
Tower Hamlets	2	863	81	0	381	17	1,344
Greenwich	8	475	386	1	344	51	1,265
Lewisham	8	567	419	0	381	45	1,420
Southwark	10	481	491	2	394	56	1,434
Lambeth	14	464	591	1	524	66	1,660
Wandsworth	9	521	465	0	365	64	1,424
Hammersmith and Fulham	3	339	378	0	243	40	1,003
Kensington and Chelsea	1	313	424	1	262	39	1,040
Total Inner	76	6,687	4,433	14	4,708	513	16,431
Waltham Forest	9	311	387	1	356	27	1,091
Redbridge	4	352	491	9	420	32	1,308
Havering	10	284	467	3	297	36	1,097
Barking and Dagenham	8	211	390	7	212	27	855
Newham	6	311	415	2	410	31	1,175
Bexley	9	299	250	1	180	53	792
Bromley	14	483	282	1	293	68	1,141
Croydon	5	293	789	1	502	56	1,646
Sutton	4	347	152	1	173	56	733
Merton	2	256	231	0	151	28	668
Kingston	3	238	222	0	116	28	607
Richmond	9	282	212	0	179	17	699
Hounslow	3	451	492	0	324	61	1,331
Hillingdon	9	477	372	0	436	37	1,331
Ealing	3	426	476	0	385	67	1,357
Brent	4	398	366	0	483	29	1,280
Harrow	2	160	208	1	212	7	590
Barnet	7	699	116	2	1,087	65	1,976
Haringey	3	483	54	2	587	29	1,158
Enfield	3	512	382	0	531	44	1,472
Total Outer	117	7,273	6,754	31	7,334	798	22,307
Greater London	193	13,960	11,187	45	12,042	1,311	38,738

Table 4.5 Vehicles involved in collisions in the Greater London area in 2011 by manoeuvre and borough

Note: This table is continued on the next page

Borough	Parked	Stopping	Starting	Turning round	Turning left or waiting to turn	Turning right or waiting to turn	Going ahead but held up	Going ahead overtaking	Sub- total
City of London	13	25	40	16	27	70	38	70	299
Westminster	73	106	118	68	174	254	145	213	1,151
Camden	70	58	72	27	90	171	79	142	709
Islington	56	127	59	23	87	211	75	116	754
Hackney	52	159	55	9	88	153	78	115	709
Tower Hamlets	58	202	44	17	104	157	103	118	803
Greenwich	40	126	50	16	72	159	119	77	659
Lewisham	50	110	44	16	93	238	100	84	735
Southwark	50	88	69	29	96	239	106	123	800
Lambeth	46	203	101	37	126	275	109	156	1,053
Wandsworth	45	117	48	25	107	357	107	210	1,016
Hammersmith and Fulham	49	54	21	18	103	224	41	28	538
Kensington and Chelsea	60	68	15	28	85	166	34	37	493
Total Inner	662	1,443	736	329	1,252	2,674	1,134	1,489	9,719
Waltham Forest	54	58	58	9	56	165	74	97	571
Redbridge	48	160	81	19	52	119	88	62	629
Havering	38	81	42	9	32	137	85	42	466
Barking and Dagenham	28	121	67	11	23	79	59	40	428
Newham	28	92	56	16	56	123	84	93	548
Bexley	54	100	37	8	33	106	44	36	418
Bromley	56	81	56	6	54	200	62	40	555
Croydon	95	232	113	21	102	254	125	88	1,030
Sutton	29	83	43	9	34	150	57	50	455
Merton	38	47	12	9	38	121	47	19	331
Kingston	33	55	9	8	47	112	24	18	306
Richmond	42	50	17	20	36	125	39	38	367
Hounslow	25	216	39	10	115	248	151	80	884
Hillingdon	42	202	58	14	56	171	91	49	683
Ealing	43	209	45	21	82	222	159	120	901
Brent	58	153	65	28	58	150	87	73	672
Harrow	32	57	23	9	22	81	40	26	290
Barnet	92	371	130	26	67	214	82	66	1,048
Haringey	49	190	97	23	48	147	38	50	642
Enfield	48	249	63	17	70	169	112	50	778
Total Outer	932	2,807	1,111	293	1,081	3,093	1,548	1,137	12,002
Greater London	1,594	4,250	1,847	622	2,333	5,767	2,682	2,626	21,721

Table 4.5 (cont.) Vehicles involved in collisions in the Greater London area in 2011 by manoeuvre and borough

Borough	Change lane to left	Change lane to right	Going ahead left bend	Going ahead right bend	Going ahead other	Reversing	Grand total
City of London	7	10	7	8	246	15	592
Westminster	46	31	11	25	1,072	49	2,385
Camden	22	17	8	11	637	30	1,434
Islington	13	18	13	13	656	18	1,485
Hackney	24	12	6	4	617	13	1,385
Tower Hamlets	27	20	7	4	682	19	1,562
Greenwich	14	18	21	48	560	23	1,343
Lewisham	12	13	14	26	740	24	1,564
Southwark	27	12	22	29	815	20	1,725
Lambeth	26	28	19	22	795	16	1,959
Wandsworth	21	14	4	12	601	26	1,694
Hammersmith and Fulham	14	20	25	58	511	19	1,185
Kensington and Chelsea	28	27	12	31	615	18	1,224
Total Inner	281	240	169	291	8,547	290	19,537
Waltham Forest	11	12	20	27	546	18	1,205
Redbridge	21	21	34	27	609	29	1,370
Havering	18	24	25	62	530	16	1,141
Barking and Dagenham	14	9	14	14	410	11	900
Newham	20	13	19	25	619	32	1,276
Bexley	7	6	17	36	318	20	822
Bromley	4	1	23	35	601	11	1,230
Croydon	13	7	19	26	634	32	1,761
Sutton	2	2	7	7	296	13	782
Merton	12	17	13	35	315	12	735
Kingston	5	12	19	23	325	8	698
Richmond	9	6	29	38	371	14	834
Hounslow	17	15	9	11	495	24	1,455
Hillingdon	13	22	24	27	605	24	1,398
Ealing	23	10	6	8	495	27	1,470
Brent	10	10	25	26	579	42	1,364
Harrow	5	4	24	22	268	8	621
Barnet	31	17	33	39	840	42	2,050
Haringey	11	12	15	18	528	30	1,256
Enfield	19	11	14	26	665	27	1,540
Total Outer	265	231	389	532	10,049	440	23,908
Greater London	546	471	558	823	18,596	730	43,445

Table 4.6 Vehicles involved in collisions in the Greater London area in 2011 tabulated by manoeuvre and vehicle type *Note: This table is continued on the next page*

Type of vehicle	Parked	Stopping	Starting	Turning		Turning		Going		Sub-total
				round	waiting to turn	left or right or waiting to turn	ahead but held up	overtaking	Going ahead	
Pedal cycle	7	124	102	4	0	0	0	65	0	302
Motor cycle up to 50cc	0	44	17	1	0	0	0	7	0	69
Motor cycle 50 to 125cc	8	163	35	9	0	0	0	56	0	271
Motor cycle 125 to 500cc	1	27	15	3	0	0	0	15	0	61
Motor cycle over 500cc	7	106	29	2	0	0	0	53	0	197
Car	1,330	2,833	1,082	472	0	0	0	2,025	0	7,742
Taxi	45	125	89	75	0	145	0	113	0	592
Bus or coach	59	471	297	3	0	0	0	164	0	994
Goods up to 3.5 tonnes MGW	90	265	119	41	0	0	0	147	0	662
Goods 3.5 to 7.5 tonnes MGW	18	19	14	5	0	0	0	11	0	67
Goods over 7.5 tonnes MGW	12	40	28	3	0	0	0	13	0	96
Other motor vehicle	16	33	18	4	0	0	0	13	0	84
Other non-motor vehicle	1	0	2	0	0	0	0	0	0	3
Total	1,594	4,250	1,847	622	0	145	0	2,682	0	11,140

Table 4.6 (cont.) Vehicles involved in collisions in the Greater London area in 2011 tabulated by manoeuvre and vehicle type

Type of vehicle	Change lane		Change lane		Going ahead		Going ahead		Grand total	
	to left	to right	to right	to left	left bend	right bend	other	Reversing	Reversing	total
Pedal cycle	13	64	64	55	121	3,216	4	0	0	0
Motor cycle up to 50cc	3	3	3	7	11	304	1	0	0	0
Motor cycle 50 to 125cc	11	13	13	39	54	1,367	2	0	0	0
Motor cycle 125 to 500cc	2	1	1	8	7	261	0	0	0	0
Motor cycle over 500cc	5	9	9	23	46	962	0	0	0	0
Car	369	272	272	335	480	10,023	543	0	0	0
Taxi	23	17	17	17	14	449	19	1,030	19	1,030
Bus or coach	11	12	12	26	24	760	2	0	2	0
Goods up to 3.5 tonnes MGW	58	43	43	35	43	886	121	0	121	0
Goods 3.5 to 7.5 tonnes MGW	11	5	5	4	7	75	13	0	13	0
Goods over 7.5 tonnes MGW	35	24	24	3	11	131	12	0	12	0
Other motor vehicle	5	8	8	6	4	155	13	0	13	0
Other non-motor vehicle	0	0	0	0	1	7	0	0	0	0
Total	546	471	471	558	823	18,596	730	1,030	730	1,030

Figure 4.7: Age profile of motor vehicle drivers involved in collisions in Greater London 2011

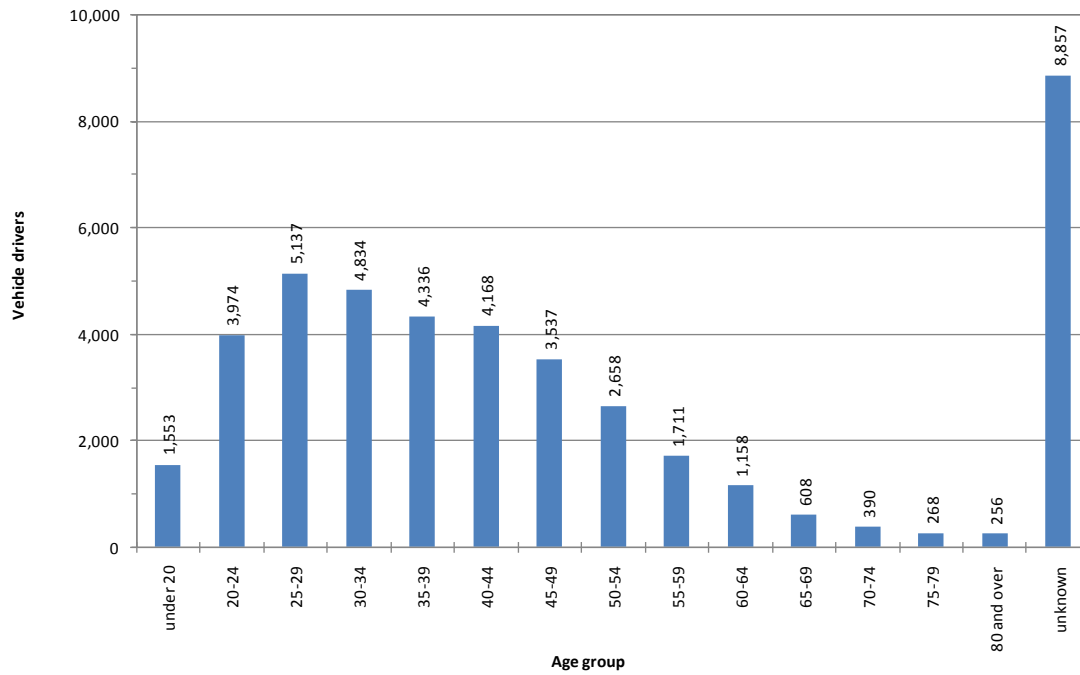
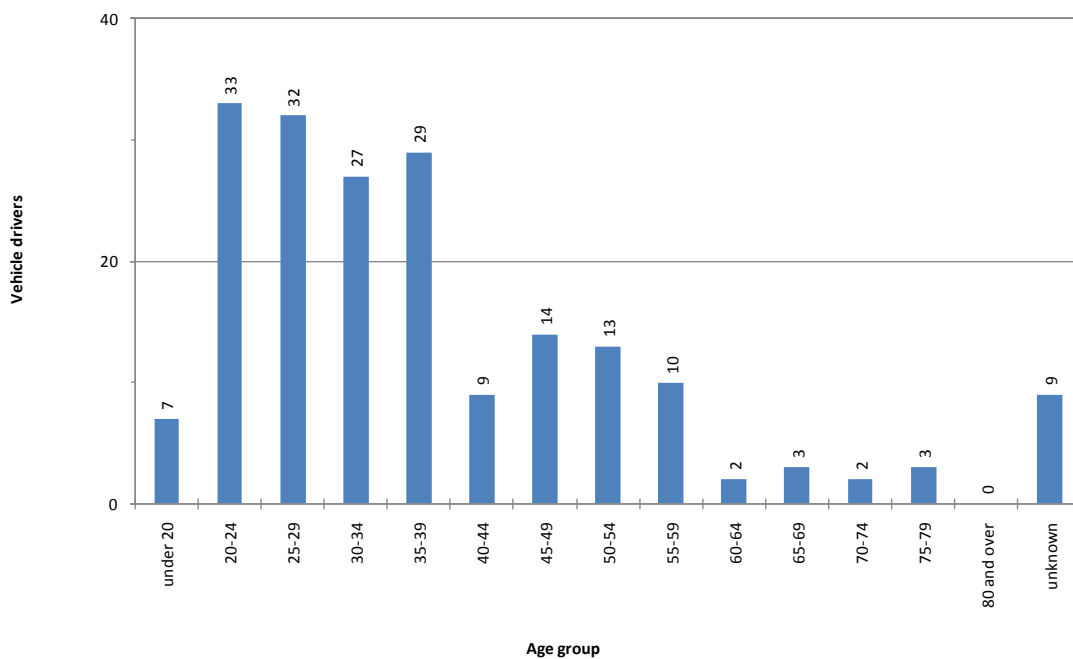


Figure 4.8: Positive breath tests for drivers involved in collisions in Greater London 2011



5

Costs

5.1 DfT collision costs

Table 5.1 shows the latest available road collision costs by severity and road type for all hours of the day, as published by the Department for Transport in the *Accidents Sub-objective TAG Unit 3.4.1* on the *Transport Analysis Guidance (TAG)* web site (www.dft.gov.uk/webtag) in August 2012.

When assessing the potential savings from engineering remedial measures or other road safety schemes, it is normal practice to use the average collision cost, which includes an allowance for *damage only collisions*, (which are not recorded as part of the *Stats 19* national reporting system).

Table 5.1 Collision costs (£'s at 2010 prices)

Type of collision	Urban roads ¹	Rural roads ²	Motorways	All roads
Fatal collision	1,820,760	1,920,646	2,052,377	1,882,872
Serious collision	206,791	232,594	246,217	215,837
Slight collision	21,556	25,638	30,231	22,814
All injury collisions	63,334	120,053	92,312	77,320
Damage only collisions	2,634	4,189	3,686	3,067
All collision cost per injury collision (including an allowance for damage only collisions)	93,809	139,149	110,044	104,720

Source: Department for Transport figures from the *Accidents Sub-objective TAG Unit 3.4.1 Transport Analysis Guidance* web site (www.dft.gov.uk/webtag) August 2012

1. Urban roads are considered those other than motorways with speed limits of 40mph or less

2. Rural roads are considered roads other than motorways with speed limits greater than 40mph

5.2 The cost to London

If the average collision cost for urban roads from Table 5.1 (£93, 809) is applied to the 24,443 personal injury collisions reported in the Greater London area during 2011, then the total cost to the community of all road collisions in Greater London is estimated to be over £2.3 billion at 2010 prices.

6

Appendices

Important notes about collision data

6.1 Comparing collision data from year to year

It is important to be aware of the following points when comparing collision data from year to year:

(a) The increase in serious casualties in 2006, particularly for car occupants, was larger than expected. In conjunction with the Metropolitan Police Service (MPS), TfL investigated possible discrepancies in the 2004/05 casualty data, concentrating on the period between November 2004 and April 2005, when serious injuries were noticeably lower compared to subsequent months. Since then figures have returned to a more consistent trend. During this period there were several organisational changes within the MPS with regards to the collision and casualty data processing. Detailed investigations by MPS have not identified direct links between these changes and the apparent decrease in serious injuries during this period. Consequently, some of the increase in serious injuries in 2006 was probably as a result of comparing the 2006 data with the low data in 2005.

(b) The numbers of collisions and casualties were changed for the years 1991 to 1997 as some previously missing collisions were reported by the City Police. This mainly affects the City of London and adjacent boroughs, as well as figures for inner London. As a result data contained in this annual report is not directly comparable with data in *annual reports* or *Factsheets* prior to 1998.

(c) It should be noted that all the data in this report relates to the post-April 1995 Greater London borough boundaries. Because of this it is not possible to compare current Greater London collision and casualty totals or individual borough figures with those in annual reports prior to 1995.

(d) During 1984, the Metropolitan Police improved their procedures for allocating the level of severity associated with reported collisions and recording fatalities. Changes in coding the level of severity were applied to collisions occurring after September 1984, though action on fatalities was backdated to cover all collisions for the whole of 1984. Consequently, care must be taken when comparing collisions on a year to year basis, particularly serious collisions, casualties and fatalities post 1984 with those occurring before 1984.

(e) Data for the City of London recorded by the City of London Police was added to the TfL database for collisions occurring in 1986 and onwards. Therefore, care must be taken when comparing collision and casualty totals for the whole of London or inner London, before and after 1986. Note that all of the tables and figures within this report, including the ten year trend graphs (Figures 1.1 to 1.7) and longer period trend graphs (Figures 1.8 to 1.10), include data for the City of London.

(f) Due to changes in Metropolitan Police administrative procedures, collision data for Heathrow Airport are not held for 1982 onwards. Care should be taken when comparing long term data on a year to year basis, particularly in the London Borough of Hillingdon, to which these collisions had previously been allocated.

(g) It should also be noted that the Department for Transport in its annual report Road casualties Great Britain include collision data for Heathrow Airport within both the London Borough of Hillingdon total and the Greater London total, up to and including the 2007 report. From the 2008 report, Heathrow is included in the Greater London total but shown as a separate authority.

6.1.2 Reporting levels of collisions and casualties

This report deals only with those collisions notified by the police under the Stats 19 national reporting system. It is well known from a number of hospital-based studies that there is a degree of under-reporting of casualties nationally. It is likely that data for London will be similarly affected. In the case of fatalities the figures contained in this report are almost certainly accurate, but for both serious and slight casualties there is probably a degree of under-reporting. However, because the methods of collection of collision data by the police remain consistent over time, it is reasonable to assume that there is consistency between figures for reported collisions over a period of years.

To try to quantify the amount of under-reporting of collisions in London, TfL commissioned a study *Reporting of Road Traffic Accidents in London: Matching Police Stats 19 records with Hospital Accident and Emergency Department Data* by Transport Research Laboratory Ltd (TRL), which was completed in November 2002. This matched hospital collision and emergency department records of people injured on the roads around three representative hospitals, one each in outer, inner and central London, with police Stats 19 records of reported personal injury collisions. The report provided a best estimate of the reporting rate of 70%. The report is summarised in TfL's Safety Research Report No 1, published in September 2003.

If the best estimate of the reporting rate (70%) is applied to the 29,257 casualties reported to the police during 2011 it can be estimated that there may have been around 42,000 people injured on the roads in London in 2011.

6.1.3 Definitions of casualty severity

The following definitions are taken from *Stats 20: Instructions for the completion of Road Accident Reports – DfT October 2004*:

- **Fatal injury:** 'fatal' injury includes only those cases where death occurs in less than 30 days as a result of the accident. 'Fatal' does not include death from natural causes or suicide.

- **Serious injury:** examples of 'serious' injury are:
 - fracture
 - internal injury
 - severe cuts
 - crushing
 - burns (excluding friction burns)
 - concussion
 - severe general shock requiring hospital treatment
 - detention in hospital as an in-patient, either immediately or later
 - injuries to casualties who die 30 or more days after the accident from injuries sustained in that accident

- **Slight injury:** examples of 'slight' injury are:
 - sprains, not necessarily requiring medical treatment
 - neck whiplash injury
 - bruises
 - slight cuts
 - slight shock requiring roadside attention
 - (persons who are merely shaken and who have no other injury should not be included unless they receive or appear to need medical treatment)

Note: an injured casualty is coded by the police as seriously or slightly injured on the basis of information available within a short time of the collision. This generally will not include the results of a medical examination, but may include the fact of being detained in hospital, the reasons for which may vary somewhat from area to area.

6.1.4 Further information on this report

The processing and analysis of collision and casualty data in TfL is the responsibility of the Research and Data Analysis team, Surface Planning

Requests for collision and casualty information can be made:

- by e-mail :
sandra.cowland@tfl.gov.uk or michael.pilch@tfl.gov.uk
- by telephone: 020 3054 1079 or 1048
- or in writing :
Delivery Planning
Transport for London
Palestra
197 Blackfriars Road
London SE1 8NJ

Other reports prepared by the Research and Data Analysis team may be found here;
www.tfl.gov.uk/roadsafety

Prepared by: Michael Pilch, Principal Research & Data Analysis Officer,
Delivery Planning, TfL Surface Planning

Reviewed by: Joseph Stordy, Research & Data Analysis Manager, Delivery
Planning, TfL Surface Planning

Cleared by: Lilli Matson, Head of Delivery Planning, TfL Surface Planning