

Northern Line Extension

Battersea Site

Community Liaison Group

10.05.17

Delivering the Northern line extension with

ferrovial
agroman



MAYOR OF LONDON

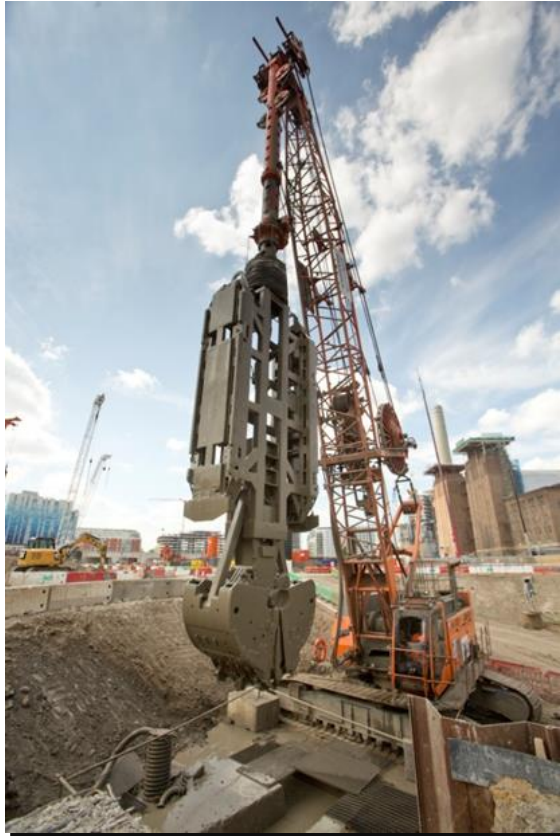


TRANSPORT
FOR LONDON



Battersea Update Feb 17 – May 17

✓ Station Box Diaphragm Wall



Completion of the perimeter Diaphragm wall on 31st March 2017.

470m long, 1.2m wide, up to 60m deep;

Comprising;

- 43,600m³ of concrete
- 5,500tonnes of reinforcement steel
- 49,800 m³ of excavation
- 54.7Km of fibre monitoring cable

Battersea Update Feb 17 – May 17

✓ Station Box Level B1



Key Fact;

- Concrete beams up to 5m deep and 3m wide.
- 815 tonnes of reinforcement
- 2,000m³ of concrete
- 10,000 m³ excavation
- 25 no pre-cast architectural beams up to 29t

Programme targets;

- B1 beams half complete by June 2017
- B1 beams complete by August 2017



Battersea Update Feb 17 – May 17

✓ Station Box Level B2



Key Fact;

- Excavate to 7m below B1 level.
- Concrete beams and slabs up to 3m deep
- 40,700 m³ excavation
- 1337 tonnes of

Programme targets;

- Excavation commenced 7th April 2017
- Excavation complete September 2017
- First non structural concrete May 2017
- B2 Beams commence June 2017
- B2 Beams complete by November 2017



Battersea Update Feb 17 – May 17

✓ Station Box Level B4



Key Fact;

- Excavate to 10m below B2 level.
- Concrete slabs 1.5m deep
- 40,800 m3 excavation
- 1285 tonnes of reinforcement
- 6000 m3 of concrete

Programme targets;

- Excavation commence August 2017
- B4 slab commence October 2017
- B4 slab complete by March 2018



Battersea Update - Lowering TBM Helen



FERROVIAL AGROMAN
LAING O'ROURKE JV



Battersea Update – Lowering TBM Amy



FERROVIAL AGROMAN
LAING O'ROURKE JV



Battersea Update Conveyors & Tower Cranes



FERROVIAL AGROMAN
LAING O'ROURKE JV



Battersea Update - Tunnelling



FERROVIAL AGROMAN
LAING O'ROURKE JV

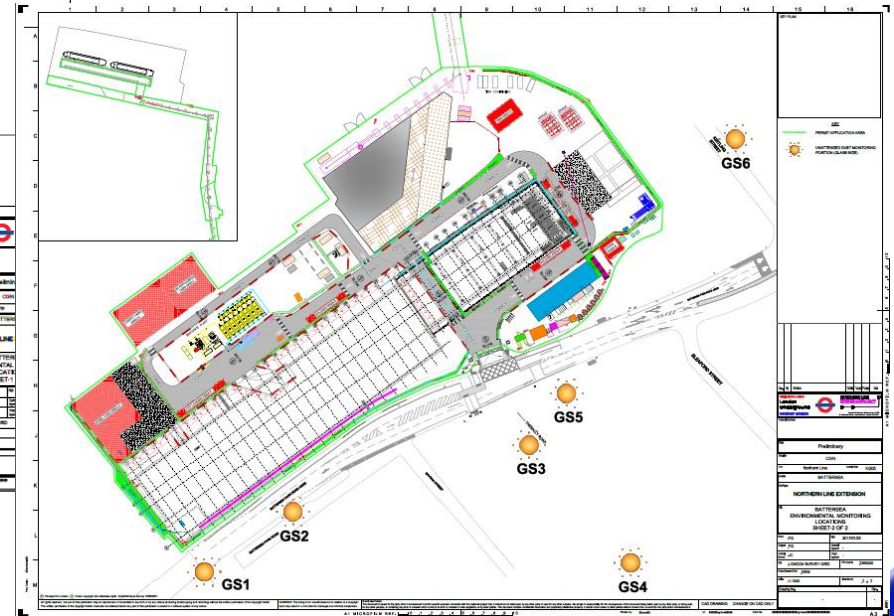
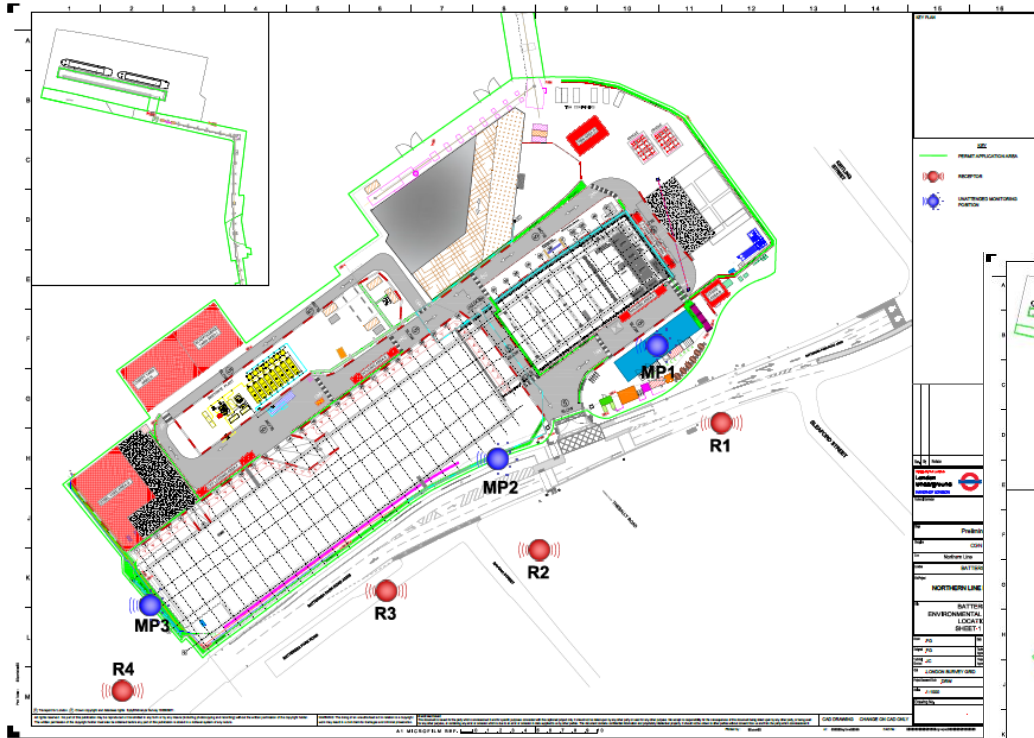


Monitoring Locations Battersea

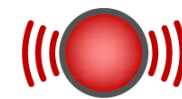
Noise and Air Quality Monitoring



FERROVIAL AGROMAN
LAING O'ROURKE JV



UNATTENDED DUST MONITORING
POSITION (GLASS SIDE)



RECEPTOR

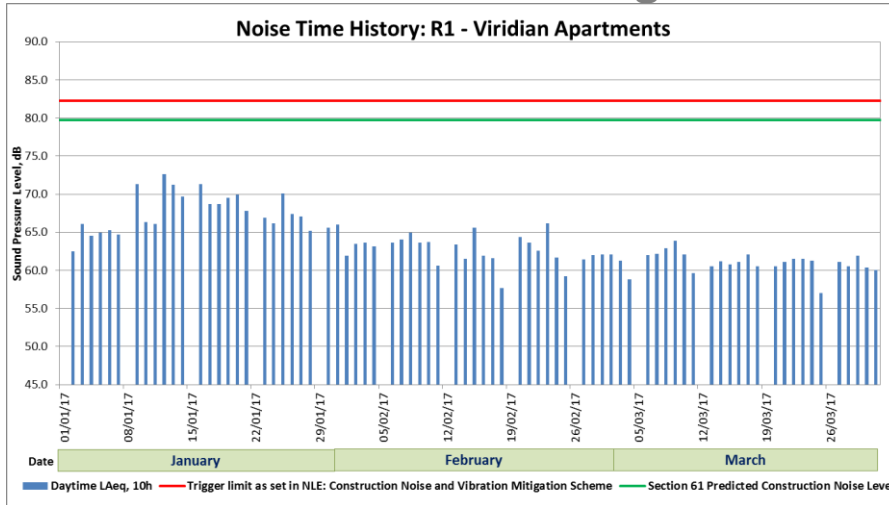


Monitoring Jan – May 17

Environmental Monitoring



FERROVIAL AGROMAN
LAING O'ROURKE JV

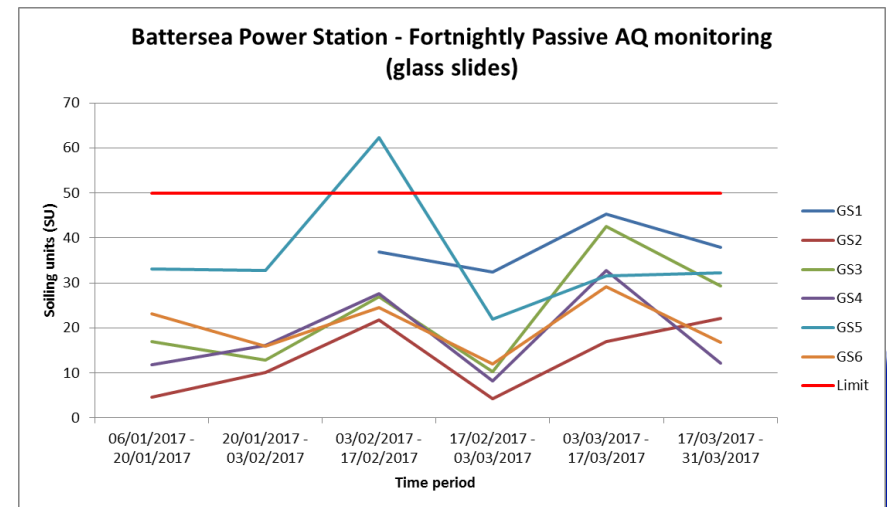
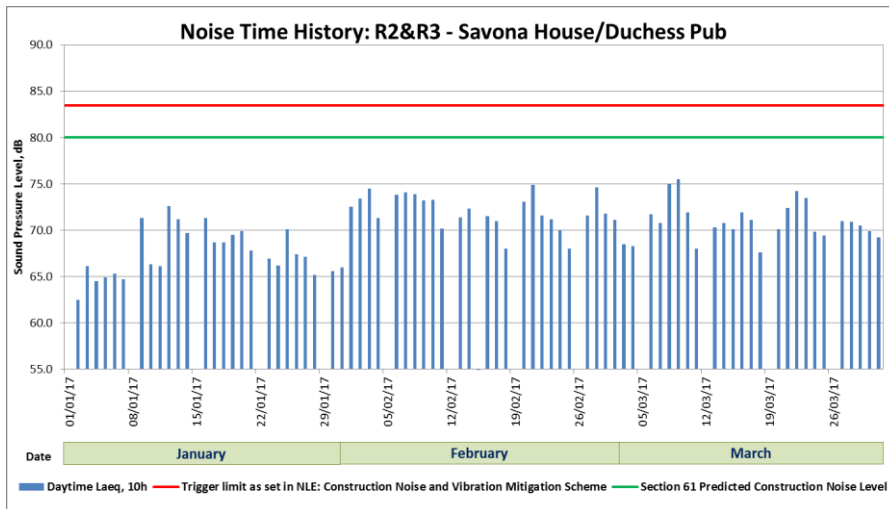


NOISE – During these three months of monitoring there have been no noise triggers associated with the Battersea Power station worksite.

Two noise complaint have been received in April from a resident in the Viridian apartments, with regards to Sunday working. No noise thresholds were exceeded, **the site teams have been re-briefed to minimize noise nuisance.**

GLASS SLIDES– Dust deposition rates have been lower than the guidance criterion of 25 SU per week set out by the Environmental Agency, with the exception of the GS5 presenting 62.3 SU for the period 03-02-17 to 17-02-17. The location of this glass slide is highly influenced by road traffic of Battersea Park Road.

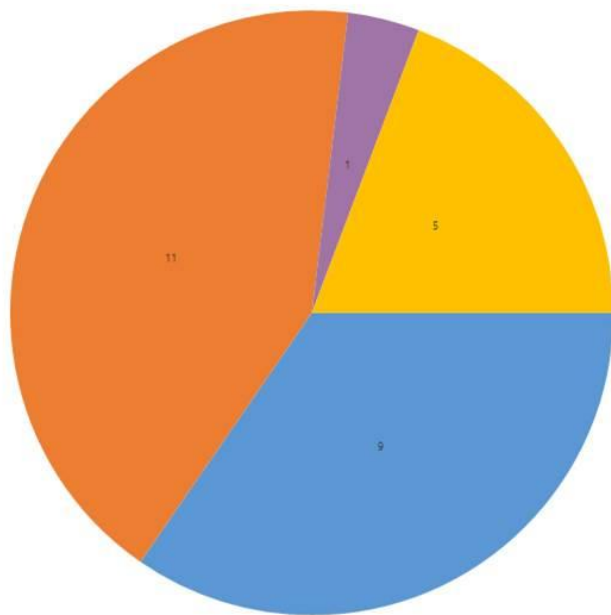
A dust complaint was received on April 21st with regards the stockpile materials at the site entrance. **Additional dust suppression has been implemented and the stockpile is being removed.**



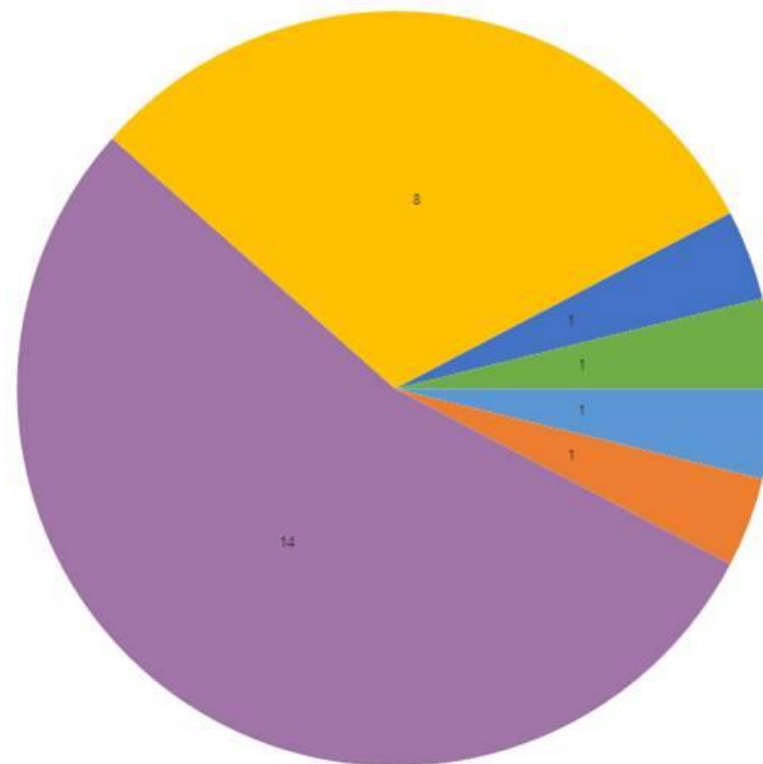
Complaints Summary

Since Feb 17

- 145 cases over all
- 26 of these cases for Battersea
 - 26 resolved
 - 0 are active



Complaint Enquiry Non-valid contact TfL enquiry



Defect Survey Miscellaneous Procurement
Dust Noise and Vibration Traffic Management

Your Feedback

You Suggested	We Did
Repositioning of the lights on the jetty at the previous CLG	NLE redirected the lights along the jetty to shine away from the houseboats.
Noise from the crawler crane	Once the TBMs were fully lifted into the crossover box, we replaced the 250 ton crawler crane with a stationary 100 ton tower crane which did not require reversing alarms.
Keep Roads Clean	Road sweepers clean Battersea Park Road twice a day Wheel washer is operational on site as vehicles enter and leave.
Increased level of dust from mound of earth on site	Investigated, dampened down until lorries arrived to remove earth from site.
Engagement with University students	We hosted a visit for Portsmouth University students as part of a graduate programme.



NLE Skills and Employment



- Attended Wandsworth Work Match employment fair – Jan 17
- Visit by Civil Engineering Students from Portsmouth University to Battersea as part of the graduate programme in March
- Working with HMP Wandsworth Prison to help soon to be released offenders



Engagement Opportunities

- CLG meetings
- One to one meetings
- Drop in sessions
- School and Youth Engage
- Stakeholder Activities
- Cycling safety Events
- Upcoming engagement



session with residents 20th May

Ways to contact us

- It is important that calls are logged through the NLE 24/7 helpdesk on 0343 222 2424 Option 1
- Email nle@tfl.gov.uk
- Regular Drop In sessions
- Please visit:

<https://tfl.gov.uk/northern-line-extension>