

Transport for London

2017/2018 Crime statistics bulletin

Quarter 3 2017/18 (1 October – 31 December 2017)

Transport for London Crime and anti-social behaviour quarterly statistics bulletin

Quarter 3 (1 October– 31 December) 2017/18

Table of Contents

1. Introduction	3
1.1. Overview	3
2. Summary of Quarterly statistics.....	4
2.1. Quarterly crime results	5
3. Monthly breakdown.....	6
4. Bus-related crime levels – breakdown by major crime category	7
5. London Underground crime levels.....	10
6. Docklands Light Railway crime levels	11
7. London Overground crime levels	12
8. TfL Rail crime levels.....	13
9. London Tramlink crime levels.....	14
10. Useful links	15

I. Introduction

I.1. Overview

This quarterly bulletin brings together crime and incident statistics from the Metropolitan Police Service (MPS) and British Transport Police (BTP) for Transport for London (TfL) services during Q3 2017/18 (October–December 2017). The bulletin provides crime statistics for the London Bus network, London Underground (LU), Docklands Light Railway (DLR), London Tramlink, TfL Rail and London Overground (LO) services.

The BTP is responsible for policing the rail network in London, including TfL’s LU, DLR, London Tramlink, TfL Rail and the LO services. Crime figures for LU, DLR, London Tramlink, TfL Rail and LO have been provided by the BTP. The BTP only deals with crime relating to the rail and Tramlink networks.

The MPS is responsible for policing the rest of London’s transport network, including the bus network. The figures reported in this bulletin for the bus network are based on official MPS figures for bus-related crime unless otherwise stated. There is no distinct category of “bus crime” in the MPS crime recording system. Recorded crime data is extracted from the MPS system using a complex query that searches all MPS crime for transport venue codes and those that have the word bus, bus stop, bus station and transport related words somewhere in the electronic case file. For this reason, some crimes that did not occur on the bus network will be included in the figures. This is different from the BTP as all crimes dealt with by the BTP and included on their crime recording system relate directly to the rail network.

Recorded crime figures relate to crime recorded by the MPS and BTP in the quarterly period. The figures do not include crimes that have not been reported to the police or those that the police decide not to record. Crime figures reported in this bulletin are consistent with Home Office counting rules and are subject to revision in future updates. At the end of the financial year, crime and passenger journey figures contained in this report will be adjusted to reflect the most accurate and up to date data available. Some of the figures and percentage changes published in this report may change. The adjusted figures will be published in the annual statistical bulletin (See 2016/2017 Crime Statistics Bulletin for recent annual statistics - available here

<https://tfl.gov.uk/cdn/static/cms/documents/crime-statistics-bulletin-1617.pdf>)

2. Summary of Quarterly statistics

Public transport in London continues to be a relatively safe and low crime environment. Currently, over ten million passengers travel on the TfL's public transport services each day with very few of them ever experiencing or witnessing crime.

Overall, the level of pan-modal transport related crime¹ in Q3 2017/18 is 7.3% higher than Q3 2016/17 (586 more offences) and the rate of crime has increased to 8.5 crimes per million passenger journeys (from 7.8 in Q3 2016/17).

While levels of transport crime remain low, TfL and its transport policing partners remain focussed on those networks and crime types that have seen an increase.

Measures have been put in place to deal with the upward trend in violence / serious public order offences seen on some rail modes, most notably LU, DLR, LO and the Tramlink networks. The rise is largely due to an increase in low level violence, pushing and shoving, verbal disputes and threatening behaviour at busy commuter times when services are at peak capacity. Despite the upward trend in recorded incidents, overall there remain a very low number of offences. Concerted action is underway to address these offences. Some of the key measures include high visibility policing and targeted action against offenders combined with TfL's travel demand management and communications activities to encourage improved passenger behaviour. However, targeting violence/serious public order offences on transport networks remains challenging given their sporadic nature.

It should also be noted, that there were some changes to the way that some offences were recorded within the VAP and serious public order offences throughout the 2016/17, hence for the purposes of comparison with previous years, these categories should be combined for crime upon rail modes. Levels of violence on the bus network are stable but it remains a priority and efforts to drive this down continue.

TfL continues to work with the BTP, City of London Police and the MPS on Project Guardian, a partnership initiative to increase the confidence in reporting sexual offences which occur on the London's public transport system, reduce the risk of becoming a victim, challenge unwelcome sexual behaviour and target offenders. In line with expectations, there has been an increase in the number of sexual offences reported to the police on the transport networks.

These low levels of crime have been driven by a range of initiatives undertaken by TfL in partnership with the police forces in London. TfL's significant investment in transport policing and commitment to improving safety and security has ensured the system remains a low crime environment.

¹ The pan-modal transport crime figure and rate is based on the aggregate crime and passenger journey figures for the bus, LU, DLR, Tramlink, LO and TfL Rail networks.

2.1. Quarterly crime results

Table I shows the number of recorded crimes and the rate of crime per million passenger journeys for Q3 2016/17 and Q3 2017/18². The last column of the table shows the percentage change in the number of crimes between Q3 2016/17 and Q3 2017/18.

Table I

Network	Q3 2016/17		Q3 2017/18		% change in Crimes
	Crimes	Rate	Crimes	Rate	
Bus	4,281	7.5	4,173	7.3	-2.5%
London Underground	3,144	8.8	3,748	10.7	19.2%
Docklands Light Railway	142	4.6	141	4.6	-0.7%
London Overground	268	5.6	353	7.8	31.7%
TfL Rail	105	8.8	101	8.6	-3.8%
London Tramlink	61	8.4	71	9.4	16.4%
Pan-Modal	8,001	7.8	8,587	8.5	7.3%

² Quarterly and monthly crime figures published in this bulletin are based on figures produced by the MPS and BTP at the end of each month as a snapshot of recorded crime. These figures are then aggregated to create quarterly values for this quarterly bulletin. These figures are not updated retrospectively until the end of the financial year when adjusted figures are published in the annual statistical bulletin.

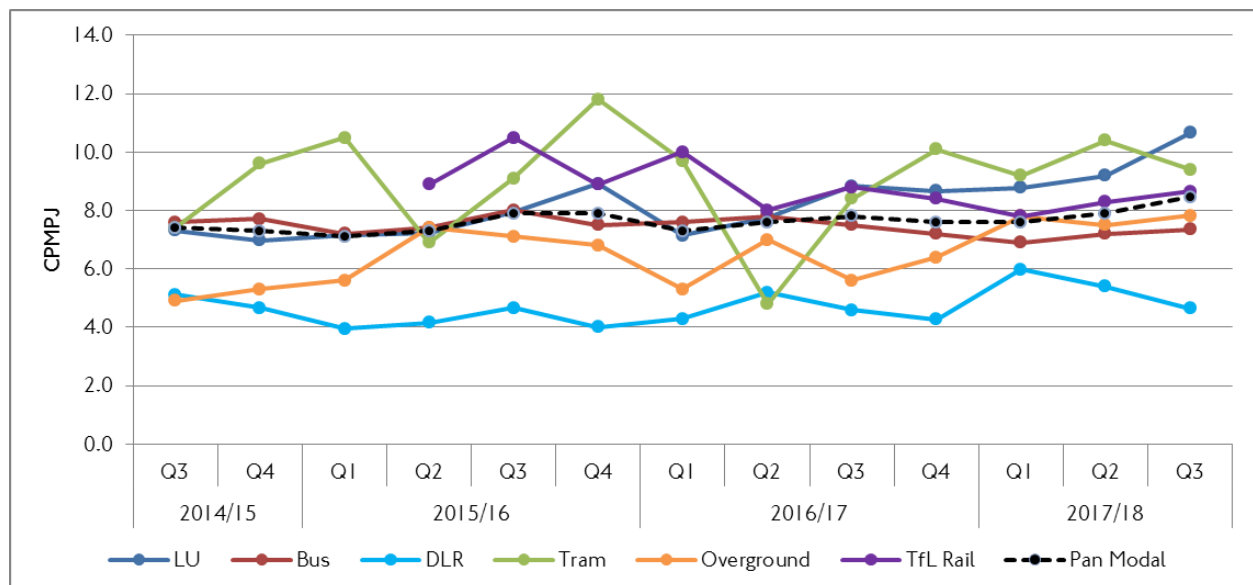
3. Monthly breakdown

Table 2 shows the total number of crimes for each month in Q3 2017/18. Chart 1 shows the crime rate on each mode and pan-modally since October 2014.

Table 2

Network	October		November		December	
	Crimes	Rate	Crimes	Rate	Crimes	Rate
Bus	1,403	7.1	1,543	7.8	1,227	7.1
London Underground	1,209	10.0	1,257	10.3	1,282	11.9
Docklands Light Railway	50	4.7	57	5.3	34	3.8
London Overground	142	9.2	102	6.5	109	7.8
TfL Rail	49	11.8	28	6.7	24	7.1
Tramlink	35	13.3	17	6.5	19	8.3
Pan-Modal	2,888	8.2	3,004	8.5	2,695	8.7

Chart 1



4. Bus-related crime levels – breakdown by major crime category

Table 3 shows the breakdown of MPS bus-related crime by the major crime categories used by the MPS for Q3 2017/18 the table includes the number of crimes, the crime rates per million passenger journeys and makes comparisons with Q3 2016/17. Table 4, overleaf, shows the same breakdown by borough.

Table 3

Offence	Q3 2016/17		Q3 2017/18		% change in Crimes
	Crimes	Rate	Crimes	Rate	
Criminal Damage	314	Less than 1	239	Less than 1	-23.9%
Other notifiable crime ³	110	Less than 1	100	Less than 1	-9.1%
Robbery	207	Less than 1	349	Less than 1	68.6%
Sexual offences	182	Less than 1	179	Less than 1	-1.6%
Theft and Handling	1,847	3.3	1,677	3.0	-9.2%
VAP	1,621	2.9	1,629	2.9	0.5%
Total Offences	4,281	7.5	4,173	7.3	-2.5%

³ Other notifiable crime includes burglary, fraud and forgery, drugs and other serious offences.

Table 4 - Borough breakdown of bus-related crime for Q3 2017/18 (October–December 2017)

	Criminal Damage	Other Notifiable Offences	Robbery	Sexual Offences	Theft and Handling	Violence Against the Person	Q3 2017/18 Total	Q3 2016/17 Total	% Change
Barking & Dagenham	6	3	8	4	26	21	68	60	13.3%
Barnet	10	6	11	10	53	56	146	138	5.8%
Bexley	9	2	1	3	6	26	47	83	-43.4%
Brent	7	3	26	5	56	80	177	122	45.1%
Bromley	7	3	7	6	19	52	94	102	-7.8%
Camden	4	2	24	7	151	70	258	187	38.0%
Croydon	6	3	15	9	27	67	127	163	-22.1%
Ealing	9	5	8	9	42	58	131	128	2.3%
Enfield	4	4	20	4	49	54	135	118	14.4%
Greenwich	7	5	7	11	31	57	118	147	-19.7%
Hackney	11	3	11	6	102	68	201	192	4.7%
Hammersmith & Fulham	5	5	6	2	38	58	114	91	25.3%
Haringey	10	4	25	6	100	70	215	221	-2.7%
Harrow	4	3	0	2	15	25	49	60	-18.3%
Havering	12	0	11	4	18	38	83	102	-18.6%
Hillingdon	30	2	5	4	33	61	135	129	4.7%
Hounslow	4	3	2	4	29	26	68	92	-26.1%
Islington	12	1	13	3	97	43	169	221	-23.5%

Continued on next page

	Criminal Damage	Other Notifiable Offences	Robbery	Sexual Offences	Theft and Handling	Violence Against the Person	Q3 2017/18 Total	Q3 2016/17 Total	% Change
Kensington & Chelsea	1	0	1	5	35	26	68	74	-8.1%
Kingston upon Thames	3	1	1	3	10	30	48	52	-7.7%
Lambeth	6	14	16	8	97	92	233	259	-10.0%
Lewisham	9	3	12	9	56	49	138	179	-22.9%
Merton	2	0	4	3	9	29	47	58	-19.0%
Newham	11	5	31	14	65	59	185	230	-19.6%
Redbridge	6	0	10	0	46	24	86	64	34.4%
Richmond upon Thames	1	3	3	0	15	18	40	51	-21.6%
Southwark	10	0	25	9	103	115	262	258	1.6%
Sutton	2	1	5	3	5	17	33	43	-23.3%
Tower Hamlets	8	0	10	6	39	44	107	102	4.9%
Waltham Forest	7	9	8	7	54	54	139	113	23.0%
Wandsworth	2	2	12	7	57	52	132	127	3.9%
Westminster	14	5	11	6	194	90	320	315	1.6%
Q3 2017/18 Total	239	100	349	179	1,677	1,629	4,173	4,281	-2.5%
Q3 2016/17 Total	314	110	207	182	1,847	1,621			
% change	-23.9%	-9.1%	68.6%	-1.6%	-9.2%	0.5%			

Key		
Volume	Low	High
% Change	Reduction	Increase

5. London Underground crime levels

Table 5 shows the breakdown of crime on the LU network by the major crime categories used by the BTP for Q3 2017/18. The table includes the number of crimes and the crime rates per million passenger journeys made on the LU and makes comparisons with Q3 2016/17.

Table 5

Offence	Q3 2016/17		Q3 2017/18		% change in Crimes
	Crimes	Rate	Crimes	Rate	
Violence Against the Person and Serious Public Order	1,133	3.2	1,498	4.3	32.2%
Sexual Offences	267	Less than 1	326	Less than 1	22.1%
Criminal Damage	278	Less than 1	249	Less than 1	-10.4%
Line of Route	15	Less than 1	14	Less than 1	-6.7%
Theft of Passenger Property	1,157	3.2	1,413	4.0	22.1%
Motor Vehicle/Cycle Offences	129	Less than 1	85	Less than 1	-34.1%
Robbery	28	Less than 1	35	Less than 1	25.0%
Theft of Railway Property / Burglary	36	Less than 1	48	Less than 1	33.3%
Serious Fraud	25	Less than 1	21	Less than 1	-16.0%
Drugs	56	Less than 1	37	Less than 1	-33.9%
Other Serious Offences	20	Less than 1	22	Less than 1	10.0%
Total Notifiable Offences	3,144	8.8	3,748	10.7	19.2%

Note: there were some changes to the way that some offences were recorded within the VAP and serious public order offences throughout 2016/17. For the purposes of comparison with 2016/17, these categories have been combined in the above table. The combined level of VAP/serious public order offences increased by 32.2% (365 more offences) compared with the previous year.

6. Docklands Light Railway crime levels

Table 6 shows the breakdown of crime on the DLR network by the major crime categories used by the BTP for Q3 2017/18. The table includes the number of crimes and the crime rates per million passenger journeys made on the DLR and makes comparisons with Q3 2016/17.

Table 6

Offence	Q3 2016/17		Q3 2017/18		% change in Crimes
	Crimes	Rate	Crimes	Rate	
Violence Against the Person and Serious Public Order	53	1.7	62	2.0	17.0%
Sexual Offences	10	Less than 1	10	Less than 1	0.0%
Criminal Damage	8	Less than 1	7	Less than 1	-12.5%
Line of Route	3	Less than 1	1	Less than 1	-66.7%
Theft of Passenger Property	50	1.6	44	1.4	-12.0%
Motor Vehicle/Cycle Offences	8	Less than 1	7	Less than 1	-12.5%
Robbery	3	Less than 1	6	Less than 1	100.0%
Theft of Railway Property / Burglary	2	Less than 1	2	Less than 1	0.0%
Serious Fraud	0	N/A	0	N/A	N/A
Drugs	4	Less than 1	2	Less than 1	-50.0%
Other Serious Offences	1	Less than 1	0	N/A	-100.0%
Total Notifiable Offences	142	4.6	141	4.6	0.7%

Note: there were some changes to the way that some offences were recorded within the VAP and serious public order offences throughout 2016/17. For the purposes of comparison with 2016/17, these categories have been combined in the above table. The combined level of VAP/serious public order offences increased by 17.0% (9 more offences) compared with the previous year.

7. London Overground crime levels

Table 7 shows the breakdown of crime on the LO network by the major crime categories used by the BTP for Q3 2017/18. The table includes the number of crimes and the crime rates per million passenger journeys made on the London Overground and makes comparisons with Q3 2016/17.

Table 7

Offence	Q3 2016/17		Q3 2017/18		% change in Crimes
	Crimes	Rate	Crimes	Rate	
Violence Against the Person and Serious Public Order	115	2.4	167	3.7	45.2%
Sexual Offences	16	Less than 1	31	Less than 1	93.8%
Criminal Damage	31	Less than 1	41	Less than 1	32.3%
Line of Route	7	Less than 1	1	Less than 1	-85.7%
Theft of Passenger Property	52	1.1	63	1.4	21.2%
Motor Vehicle/Cycle Offences	28	Less than 1	31	Less than 1	10.7%
Robbery	4	Less than 1	5	Less than 1	25.0%
Theft of Railway Property / Burglary	4	Less than 1	7	Less than 1	75.0%
Serious Fraud	3	Less than 1	1	Less than 1	-66.7%
Drugs	7	Less than 1	4	Less than 1	-42.9%
Other Serious Offences	1	Less than 1	2	Less than 1	100.0%
Total Notifiable Offences	268	5.6	353	7.8	31.7%

Note: there were some changes to the way that some offences were recorded within the VAP and serious public order offences throughout 2016/17. For the purposes of comparison with 2016/17, these categories have been combined in the above table. The combined level of VAP/serious public order offences decreased by 45.2% (52 more offences) compared with the previous year.

8. TfL Rail crime levels

Table 8 shows the breakdown of crime on the TfL rail network by the major crime categories used by the BTP for Q3 2017/18. The table includes the number of crimes and the crime rates per million passenger journeys made on the TfL rail and makes comparisons with Q3 2016/17.

Table 8

Offence	Q3 2016/17		Q3 2017/18		% change in Crimes
	Crimes	Rate	Crimes	Rate	
Violence Against the Person and Serious Public Order	46	3.8	55	4.7	19.6%
Sexual Offences	10	Less than 1	10	Less than 1	0.0%
Criminal Damage	8	Less than 1	6	Less than 1	-25.0%
Line of Route	2	Less than 1	1	Less than 1	-50.0%
Theft of Passenger Property	16	1.3	9	Less than 1	-43.8%
Motor Vehicle/Cycle Offences	16	1.3	8	Less than 1	-50.0%
Robbery	1	Less than 1	1	Less than 1	0.0%
Theft of Railway Property / Burglary	4	Less than 1	9	Less than 1	125.0%
Serious Fraud	0	N/A	0	N/A	N/A
Drugs	1	Less than 1	1	Less than 1	0.0%
Other Serious Offences	1	Less than 1	1	Less than 1	0.0%
Total Notifiable Offences	105	8.8	101	8.6	-3.8%

Note: there were some changes to the way that some offences were recorded within the VAP and serious public order offences throughout 2016/17. For the purposes of comparison with 2016/17, these categories have been combined in the above table. The combined level of VAP/serious public order offences decreased by 19.6% (9 more offences) compared with the previous year.

9. London Tramlink crime levels

Table 9 shows the breakdown of crime on the London Tramlink network by the major crime categories used by the BTP for Q3 2017/18. The table includes the number of crimes and makes comparisons with Q3 2016/17.

Table 9

Offence	Q3 2016/17		Q3 2017/18		% change in Crimes
	Crimes	Rate	Crimes	Rate	
Violence Against the Person and Serious Public Order	29	4.0	40	5.3	37.9%
Sexual Offences	6	Less than 1	1	Less than 1	-83.3%
Criminal Damage	5	Less than 1	8	1.1	60.0%
Line of Route	4	Less than 1	3	Less than 1	-25.0%
Theft of Passenger Property	4	Less than 1	5	Less than 1	25.0%
Motor Vehicle/Cycle Offences	5	Less than 1	5	Less than 1	0.0%
Robbery	2	Less than 1	6	Less than 1	200.0%
Theft of Railway Property / Burglary	1	Less than 1	1	Less than 1	0.0%
Serious Fraud	0	N/A	0	N/A	N/A
Drugs	5	Less than 1	2	Less than 1	-60.0%
Other Serious Offences	0	N/A	0	N/A	N/A
Total Notifiable Offences	61	8.4	71	9.4	16.4%

Note: there were some changes to the way that some offences were recorded within the VAP and serious public order offences throughout 2016/17. For the purposes of comparison with 2016/17, these categories have been combined in the above table. The combined level of VAP/serious public order offences increased by 37.9% (11 more offences) compared with the previous year.

10. Useful links

Transport for London

- <http://www.tfl.gov.uk>

Metropolitan Police Service - <http://www.met.police.uk>

- Crime figures - <https://www.met.police.uk/stats-and-data/>

British Transport Police <http://www.btp.police.uk/>

- Crime figures - http://www.btp.police.uk/about_us/your_right_to_information/publications.aspx

For more information on this report please contact TfL at EOScommunications@tfl.gov.uk. For other general TfL enquiries please telephone +44 (0)343 222 1234, textphone: +44 (0)20 7918 3015 or use the relevant contact form of TfL's website <http://www.tfl.gov.uk/contact/default.aspx>