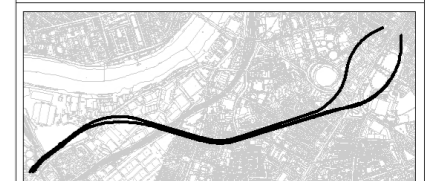
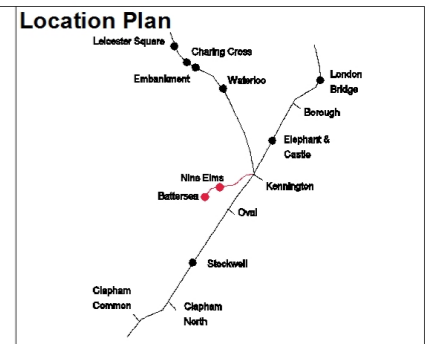




STATION BOX  
CROSS-OVER BOX  
For Continuation See PDD No. 16



- Canopy / Rooflight
- Forecourt / Access
- Tickethall / Entrance
- Paid Concourse
- Internal Accommodation
- Ducts / Risers
- Lift
- Emergency Lift (plant replacement)
- Escape Route

1. LOCATION OF BELOW GROUND UNDERGROUND STATION BOX AND TUNNELS



This drawing is illustrative only. Detailed design will be subject to further approvals

Rev	By	Chkd	Apprvd	Date	Description
06	KK	FM	SL	13/04/13	General Updates
05	KK	FM	SL	10/04/13	General Updates
04	KK	FM	SL	25/03/13	Formal Issue
03	KK	FM	SL	20/03/13	General Update
02	KK	FM	SL	11/03/13	General Update
01	KK	FM	SL	04/03/13	First Drawn

Client:  
**Transport for London**



Halcrow Group Ltd  
A CH2M HILL COMPANY  
Elms House, 43 Brock Green  
Hammersmith, London W6 7EF  
TEL: 020 3479 8000  
FAX: 020 3479 8001  
www.halcrow.com

Project:  
**NORTHERN LINE EXTENSION TO BATTERSEA TO AVOID TIL**

Drawing:  
**ILLUSTRATIVE BATTERSEA STATION - GROUND LEVEL**

Suitability:  
**S4 FORMAL ISSUE TO CLIENT**

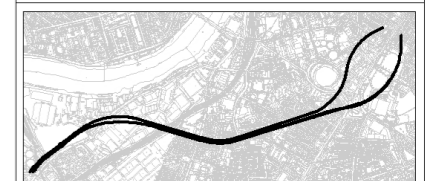
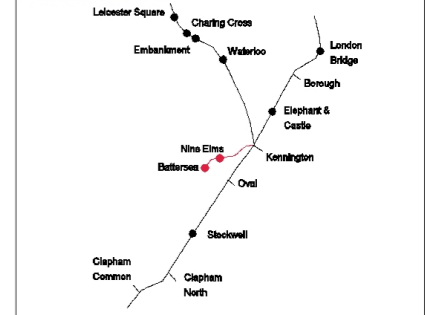
Drawn by: DT Date: 24/03/2013  
Checked by: TW Date: 24/03/2013  
Approved by: HW Date: 24/03/2013  
Drawing Scale: As indicated @ A1

Drawing Ref: GRNLEB-SDA-ST-XX-DR-ARC-41502-05-01  
Revision: 01  
Drawing No: Figure 4-13

PLANNING DIRECTION DRAWING NUMBER 11

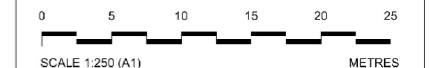
1

**Location Plan**



Canopy / Rooflight
Forecourt / Access
Tickethall / Entrance
Paid Concourse
Internal Accommodation
Ducts / Risers
Lift
Emergency Lift (plant replacement)
Escape Route

1. OUTLINE OF POTENTIAL BATTERSEA POWER STATION DEVELOPMENT

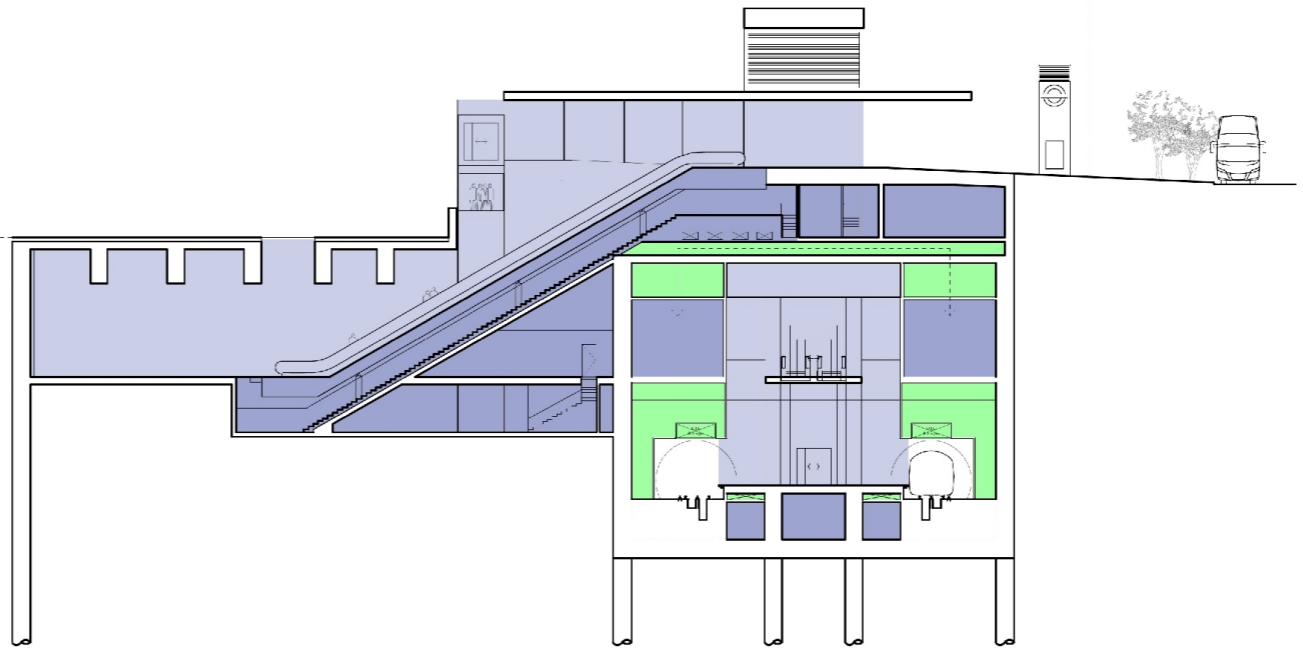


SCALE 1:250 (A1)

Internal layouts are illustrative only. Detailed design for above ground elements will be subject to further approvals.

Rev	By	Chkd	Apprvd	Date	Description
04	KK	FM	SL	25/03/13	Formal Issue
03	KK	FM	SL	23/03/13	General Update
02	KK	FM	SL	11/03/13	General Update
01	KK	FM	SL	04/03/13	First Drawn

- UPPER MALL (+8.00)
- ENTRANCE LEVEL(+7.50)
- LEVEL B1 LOWER MALL (+3.00)
- LEVEL B3 TICKETHALL (-6.00)
- LEVEL B5 PLATFORM (-13.00)
- LEVEL B6 (-16.50) SUB-PLATFORM



SECTION AA

Client: **Transport for London**



Halcrow Group Ltd  
A CH2M HILL COMPANY  
Elms House, 43 Brock Green  
Hammersmith, London W6 7EF  
TEL: 020 3479 8000  
FAX: 020 3479 8001  
www.halcrow.com

Project: **NORTHERN LINE EXTENSION TO BATTERSEA TWAO FOR TfL**

**ILLUSTRATIVE BATTERSEA STATION - SECTION AA**

Suitability: **S4 FORMAL ISSUE TO CLIENT**

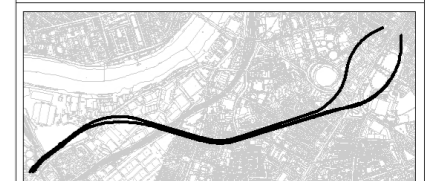
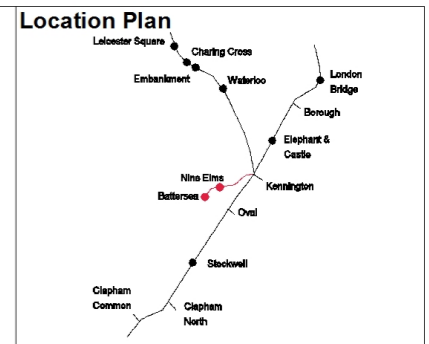
Drawn by: DT	Date: 24/03/2013
Checked by: TW	Date: 24/03/2013
Approved by: HW	Date: 24/03/2013
Drawing Scale: As indicated @ A1	

Drawing Ref: GRNLEB-SDA-ST-XX-DR-ARC-41510	Revision: 01
Drawing No: Figure 4-14	

**PLANNING DIRECTION DRAWING NUMBER 18**



- Key**
1. London underground station entrance
  2. Entrance to lower retail level
  3. Maintenance access and services
  4. Security bollards
  5. Feature paving
  6. Raised planter
  7. Urban street furniture
  8. Totem
  9. Barclays cycle hire
  10. Outline of underground station box (in black dotted line)
  11. Limit of interim landscape etc prior to over site development (in red dotted line)
  12. Wayfinding
  13. New avenue tree
  14. New avenue tree to be planted as part of over site development
  15. Barclays cycle hire stands to be placed as part of over site development
  16. New plaza trees



0 5 10 15 20 25 METRES  
 SCALE 1:250 (A1)  
 SCALE 1:500 (A3)

This drawing is illustrative only. Detailed design for above ground elements will be subject to further approvals

Rev	By	Chkd	App	Date	Description
11	YT	KW	HA	27/03/13	Formal issue to client
10	YT	KW	HA	25/03/13	Formal issue
09	YT	KW	HA	21/03/13	Minor amendments
08	YT	KW	HA	18/03/13	Minor amendments
07	YT	KW	HA	14/03/13	Minor amendments
06	YT	KW	HA	13/03/13	Minor amendments
05	YT	KW	HA	11/03/13	Planning direction drawing number amended, minor changes
04	YT	KW	HA	07/03/13	Planning direction drawing number added
03	YT	KW	HA	04/03/13	Engineering changes and minor amendments
02	YT	KW	HA	27/02/13	Draft
01	YT	KW	HA	21/02/13	Draft
00	YT	KW	HA	19/02/13	Draft

Client: **Transport for London**

**URS**

**JOHN MCASLAN + PARTNERS**

studiodareARCHITECTS

Buro Happold Consulting Engineers

Halcrow Group Ltd  
 A CH2M HILL COMPANY  
 Elms House, 43 Brock Green  
 Hammersmith, London W6 7EF  
 TEL: 020 3479 8000  
 FAX: 020 3479 8001  
 www.halcrow.com

Project: **NORTHERN LINE EXTENSION TO BATTERSEA TWAO FOR TfL**

Drawing: **ILLUSTRATIVE BATTERSEA STATION PROPOSED LANDSCAPE MASTERPLAN**

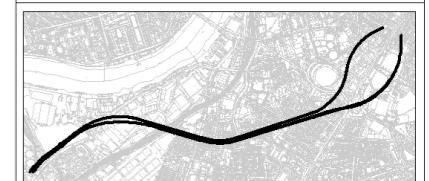
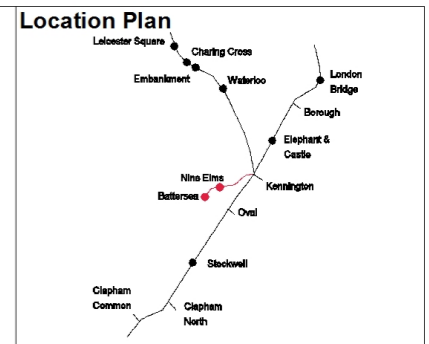
Suitability: **S4 FORMAL ISSUE TO CLIENT**

Drawn by: DT Date: 24/03/2013  
 Checked by: TW Date: 24/03/2013  
 Approved by: HW Date: 24/03/2013

Drawing Scale: **As indicated @ A1**

Drawing Ref:	1453-BA-G710-P-00	Revision:	01
--------------	-------------------	-----------	----

Drawing No: **Figure 4-15**



Canopy / Rooflight
Forecourt / Access
Tickethall / Entrance
Paid Concourse
Internal Accommodation
Ducts / Risers
Lift
Emergency Lift (plant replacement)
Escape Route

1. SAINBURYS BASEMENT CAR PARK ENTRANCE

SCALE 1:250 (A1)

This drawing is illustrative only. Detailed design will be subject to further approvals.

Rev	By	Chkd	Apprvd	Date	Description
05	SM	FM	SL	13/03/13	General Update
04	SM	FM	SL	25/03/13	Formal Issue
03	SM	FM	SL	20/03/13	General Update
02	SM	FM	SL	11/03/13	General Update
01	SM	FM	SL	04/03/13	First Drawn

Client:  
**Transport for London**



Halcrow Group Ltd.  
A CH2M HILL COMPANY  
Elms House, 43 Brock Green  
Hammersmith, London W6 7EF  
TEL: 020 3479 8000  
FAX: 020 3479 8001  
www.halcrow.com

Project:  
**NORTHERN LINE EXTENSION TO BATTERSEA TWA0 FOR T1L**

Drawing:  
**ILLUSTRATIVE NINE ELMS STATION - STREET LEVEL**

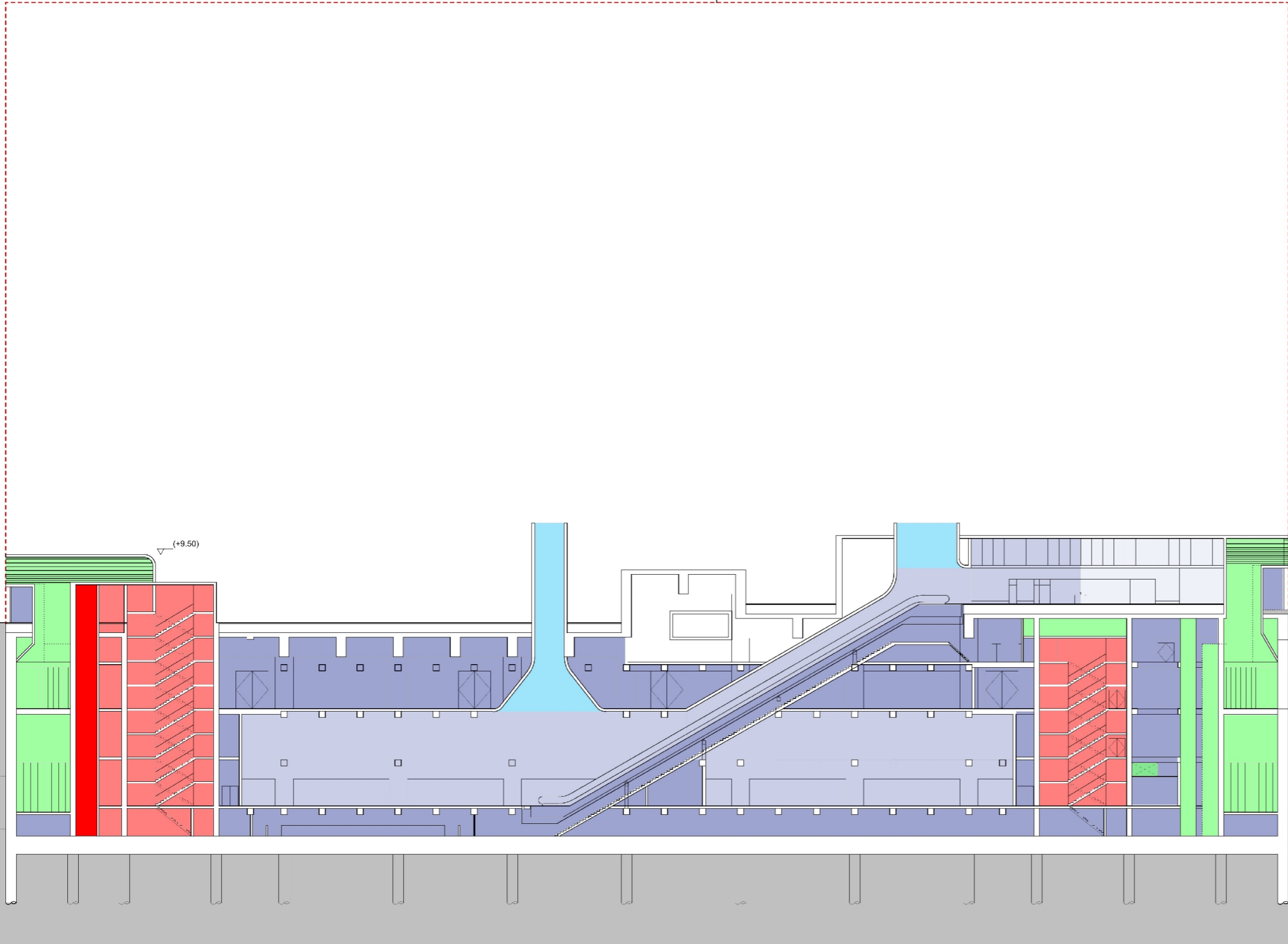
Suitability:  
**S4 FORMAL ISSUE TO CLIENT**

Drawn by: DT Date: 24/03/2013  
Checked by: TW Date: 24/03/2013  
Approved by: HW Date: 24/03/2013  
Drawing Scale: As indicated @ A1

Drawing Ref: GRNLEB-SDA-ST-XX-DR-ARC-42501  
Revision: 01  
Drawing No: Figure 4-16

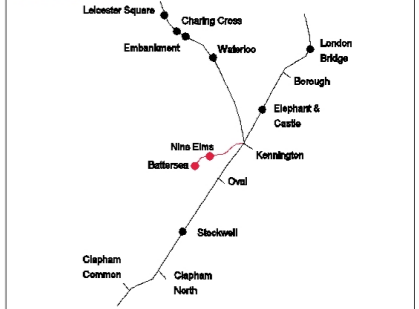
**PLANNING DIRECTION DRAWING NUMBER 28**

1



SECTION AA

### Location Plan



Canopy / Rooflight
Forecourt / Access
Tickethall / Entrance
Paid Concourse
Internal Accommodation
Ducts / Risers
Lift
Emergency Lift (plant replacement)
Escape Route

### 1. OUTLINE OF POTENTIAL DEVELOPMENT INCLUDING VENTILATION SHAFTS



Internal layouts are illustrative only. Detailed design for above ground elements will be subject to further approvals

Rev	By	Chkd	Apprvd	Date	Description
06	SM	FM	SL	13/04/13	General Update
05	SM	FM	SL	10/04/13	General Update
04	SM	FM	SL	28/03/13	Formal Issue
03	SM	FM	SL	20/03/13	General Update
02	SM	FM	SL	11/03/13	General Update
01	SM	FM	SL	04/03/13	First Drawn

Client: **Transport for London**



studiodareARCHITECTS



Halcrow Group Ltd  
 A CH2M HILL COMPANY  
 Elms House, 43 Brock Green  
 Hammersmith, London W6 7EF  
 TEL: 020 3479 8000  
 FAX: 020 3479 8001  
 www.halcrow.com



Project: **NORTHERN LINE EXTENSION TO BATTERSEA TWA0 FOR TfL**

ILLUSTRATIVE NINE ELMS STATION - SECTION AA

Suitability: **S4 FORMAL ISSUE TO CLIENT**

Drawn by: DT	Date: 24/03/2013
Checked by: TW	Date: 24/03/2013
Approved by: HW	Date: 24/03/2013

Drawing Scale: As indicated @ A1

Drawing Ref: GRNLEB-SDA-ST-XX-DR-ARC-42507

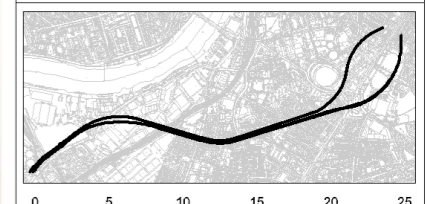
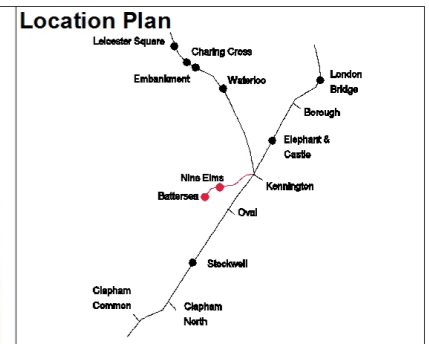
Revision: 01

Drawing No: Figure 4-17

PLANNING DIRECTION DRAWING NUMBER 34



- Key**
1. Nine Elms Station building
  2. Adjacent development
  3. Avenue trees
  4. Barclays cycle hire
  5. Way finding
  6. Cycle stands
  7. Feature trees
  8. Inground lighting and artworks
  9. Pedestrian crossing
  10. Paved carriageway
  11. Security bollards



0 5 10 15 20 25 METRES

SCALE 1:250 (A1)  
SCALE 1:500 (A3)

This drawing is illustrative only. Detailed design will be subject to further approvals.

Rev	By	Chkd	App	Date	Description
08	YT	KW	HA	27/03/13	Formal issue to client
07	YT	KW	HA	25/03/13	Formal issue
06	YT	KW	HA	21/03/13	Minor amendments
05	YT	KW	HA	14/03/13	Minor amendments
04	YT	KW	HA	11/03/13	Planning direction drawing number amended
03	YT	KW	HA	07/03/13	Planning direction drawing number added
02	YT	KW	HA	04/03/13	Engineering changes and minor amendments
01	YT	KW	HA	27/02/13	Draft
00	YT	KW	HA	19/02/13	Draft

Client: **Transport for London**



**JOHN MCASLAN + PARTNERS**



**Halcrow**

Halcrow Group Ltd.  
A CH2M HILL COMPANY  
Elms House, 43 Brock Green  
Hammersmith, London W6 7EF  
TEL: 020 3479 8000  
FAX: 020 3479 8001  
www.halcrow.com

Project: **NORTHERN LINE EXTENSION TO BATTERSEA TWAO FOR TIL**

Drawing: **ILLUSTRATIVE NINE ELMS STATION - PROPOSED LANDSCAPE MASTERPLAN**

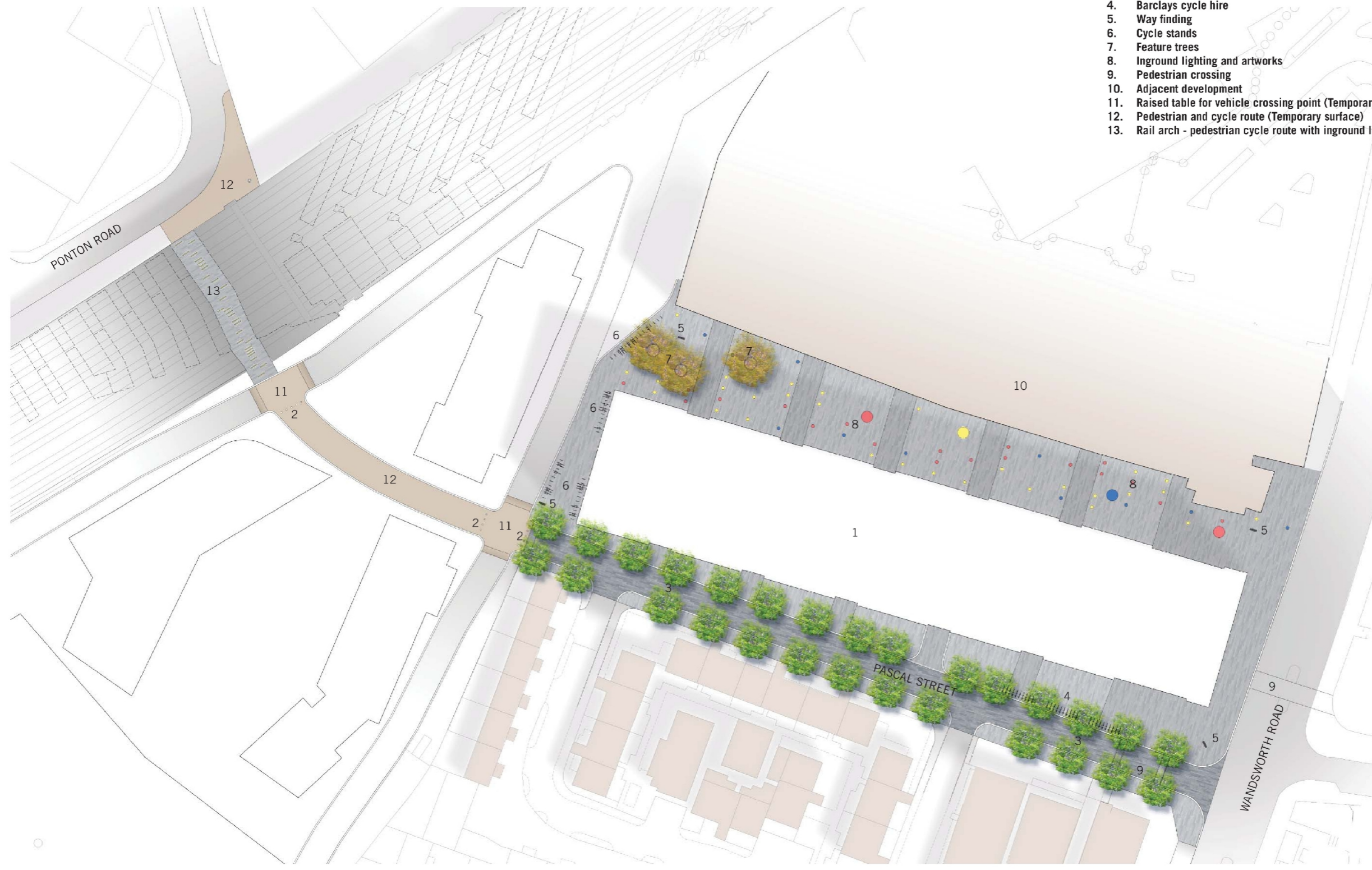
Suitability: **S4 FORMAL ISSUE TO CLIENT**

Drawn by: DT Date: 24/03/2013  
Checked by: TW Date: 24/03/2013  
Approved by: HW Date: 24/03/2013  
Drawing Scale: As indicated @ A1

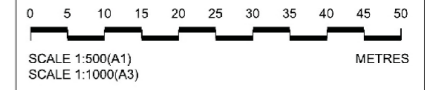
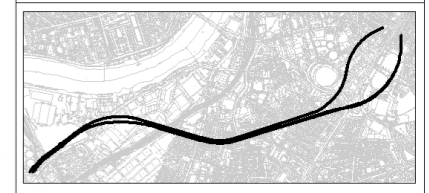
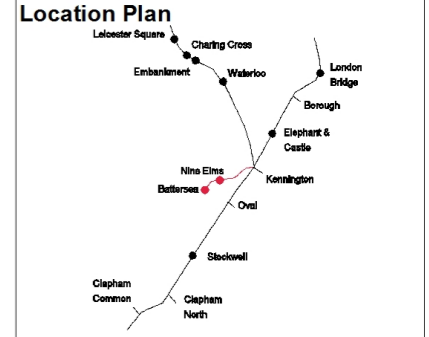
Drawing Ref: 1453-NE-G710-P-00 Revision: 01

**PLANNING DIRECTION DRAWING NUMBER 42**

Drawing No: Figure 4-18



- Key**
1. Nine Elms Station building
  2. Security bollards
  3. Avenue trees
  4. Barclays cycle hire
  5. Way finding
  6. Cycle stands
  7. Feature trees
  8. Inground lighting and artworks
  9. Pedestrian crossing
  10. Adjacent development
  11. Raised table for vehicle crossing point (Temporary surface)
  12. Pedestrian and cycle route (Temporary surface)
  13. Rail arch - pedestrian cycle route with inground lighting feature



This drawing is illustrative only. Detailed design will be subject to further approvals.

Rev	By	Chk'd	App	Date	Description
09	YT	KW	HA	27/03/13	Formal issue to client
08	YT	KW	HA	25/03/13	Formal issue
07	YT	KW	HA	21/03/13	Minor amendments
06	YT	KW	HA	18/03/13	Minor amendments
05	YT	KW	HA	14/03/13	Minor amendments
04	YT	KW	HA	11/03/13	Planning direction drawing number amended
03	YT	KW	HA	07/03/13	Planning direction drawing number added
02	YT	KW	HA	04/03/13	Engineering changes and minor amendments
01	YT	KW	HA	27/02/13	Draft
00	YT	KW	HA	19/02/13	Draft

Client:  
**Transport for London**

**URS**

**JOHN MCASLAN + PARTNERS**

studiodareARCHITECTS

Halcrow Group Ltd.  
A CH2M HILL COMPANY  
Elms House, 43 Brock Green  
Hammersmith, London W6 7EF  
TEL: 020 3479 8000  
FAX: 020 3479 8001  
www.halcrow.com

**Halcrow**

Project:  
NORTHERN LINE EXTENSION  
TO BATTERSEA  
TWO FOR TIL

Drawing:  
**ILLUSTRATIVE  
NINE ELMS STATION -  
PROPOSED CONTEXTUAL  
LANDSCAPE MASTERPLAN**

Suitability:  
**S4 FORMAL ISSUE TO CLIENT**

Drawn by: DT Date: 24/03/2013  
Checked by: TW Date: 24/03/2013  
Approved by: HW Date: 24/03/2013  
Drawing Scale: As indicated @ A1

Drawing Ref: 1453-NE-G710-P-01 Revision: 01

**PLANNING DIRECTION DRAWING NUMBER 43**

Drawing No: Figure 4-19