

Northern Line Extension

END OF YEAR UPDATE

December 2020

Nine Elms Station

2020 has certainly been a challenging year! We have, though, been able to continue work on-site by implementing social distancing and other Public Health England safety measures. Through the great efforts of our team we have recently switched on power to the track along the entire extension. This major milestone represents a shift from construction site to a live railway environment and allows us to start testing and commissioning the track systems.

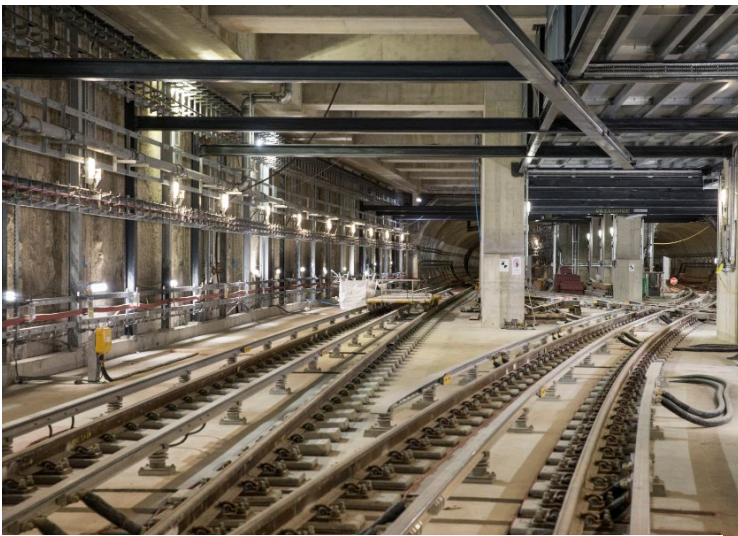


Figure 1 - Battersea Crossover box

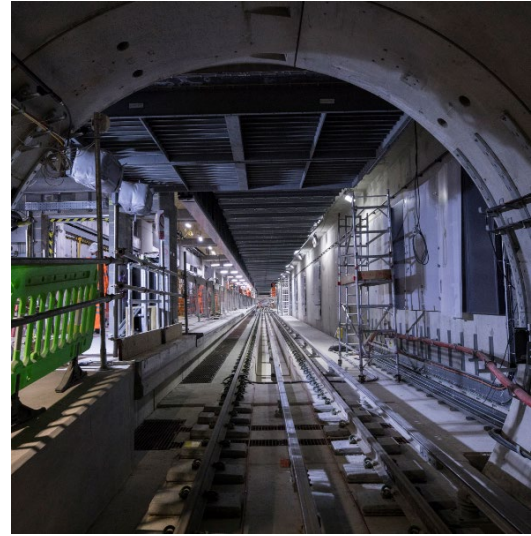


Figure 2 Approach into Nine Elms Station

We appreciate that many more people have been working from home since March and we thank you for your continued patience whilst we continue to build the new station and supporting infrastructure. Over the Christmas period you can expect minimal activities to take place on site between the 24th December and the 4th January. You may however still see some personnel entering and exiting the site; they will be carrying out maintenance checks, inspecting the track or performing other test-related tasks.

Looking ahead to early 2021, we will continue working above ground on the new landscaping including the new pedestrian route through railway Arch 42, fitting-out the station entrance and installing external cladding.

Below ground the fit-out works will continue and we'll also begin commissioning the systems and equipment, including the tunnel ventilation system, and start running test trains along the extension in preparation for the start of operational trials. We remain on target to open the new extension in autumn next year; so, an exciting year to come!



Figure 3 - Tunnel ventilation fan

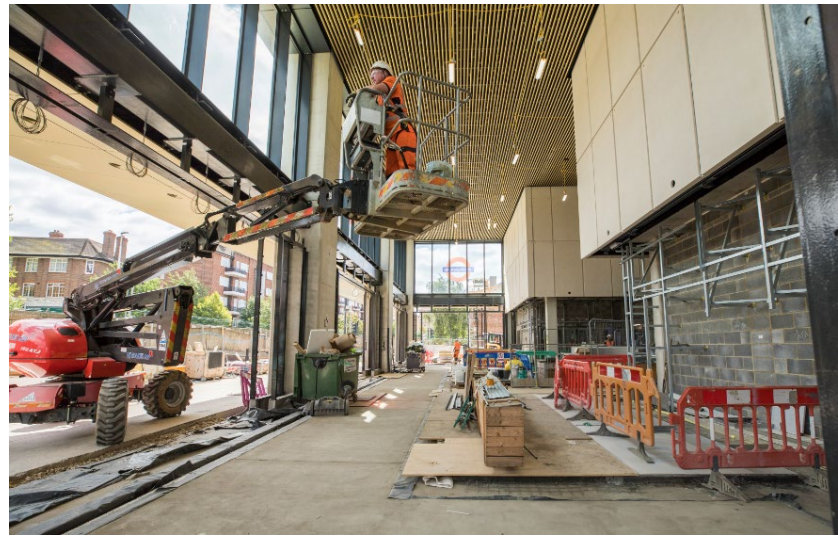


Figure 4 – Nine Elms Station entrance

We will continue providing written updates like this next year. If you are interested in taking part in a virtual Community Liaison Group one evening in January, please let us know by emailing nle@tfl.gov.uk with the subject line NINE ELMS VIRTUAL CLG. We will respond with further information in January.

The Northern Line Extension helpline remains open 24/7. Please do get in touch via the contact details below should you have any queries or questions.

Whatever you plan over the Christmas period we hope you enjoy it, stay safe and we wish you all the best for 2021!

Our core working hours are **08:00 to 18:00** Monday to Friday and **08.00 to 13.00** on Saturday. For certain activities on the surface, we may also work until **21.00**. Works underground will take place **24/7**.