

Northern Line Extension

**QUARTERLY UPDATE
2018**

January-March

NLE Nine Elms Station

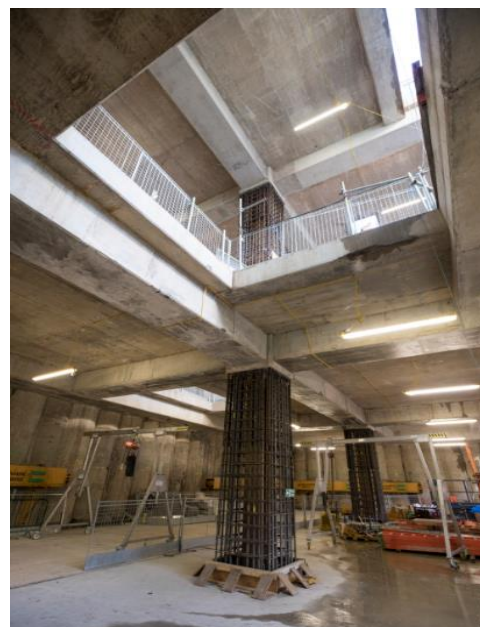
Thank you for your patience whilst we continue with the Northern Line Extension (NLE) works near you. We would like to update you on where we are and what is planned for the next quarter.

What has been completed:

In December all of the concrete slabs were poured to form part of the final flooring at basement level -2 within the future station box. The columns supporting basement level -1 have also been filled with concrete. (See image below). Over 80% of the pre-fabricated concrete beams that create the structural grid of the station have been installed at basement level -2.



Reinforced column being prepared for concrete pour. (basement level -1)



Basement level - 2

Excavation works from basement level -2 to -4 are underway. The basement level -4 will form the track level for the final station.

What is planned:

The concrete columns supporting basement level -1 will be completed. Shotcrete (a form of sprayed concrete) will be applied to the secant piled wall at basement level -2 to provide a smooth layer for the installation of a waterproofing membrane against the piled wall. See this activity in action overleaf. We will also be pouring the structural reinforced concrete wall that lines the secant pile wall. Lorries will attend site to facilitate this activity.

As part of the excavation works to reach basement level -4, the demolition of both the tunnels that run through the station will be undertaken. (See the photo below showing the partially exposed tunnel after excavation has commenced). These tunnels were built temporarily to allow the tunnel boring machines (TBM's) to safely pass through the operational site.

The demolition will involve the use of a robotic breaker to split the tunnels into smaller segments. This material will then be lifted out of the station box by the gantry crane and transferred to lorries for removal by road. Please note that demolition is taking place below ground but may be audible on the surface. This activity is due to complete by the end of March.



Application of sprayed concrete



Demolition of the tunnel underway

At both the east and the west ends of the station, temporary works will take place in early February to support the ground that surrounds the tunnels. This is done by installing timber boards. Please note due to the nature of this activity and the need for continuity, these works will take place **24/7** throughout the month of February and early March.

Please be assured that the work will be carried out diligently and will be monitored to ensure that it is within agreed environmental limits. We will endeavour to minimise disturbance in accordance with the Code of Construction Practice, including the control of noise and vibration using best practicable means.

Our core working hours are **08:00 to 18:00 Monday to Friday** and **08:00 to 13:00 Saturdays** on the surface. For deliveries and removal of excavated material we may on occasion also use the approved extended hours of **08:00 to 21:00 Monday to Friday** and **08:00 to 19:00 on Saturdays**

If you have any concerns or queries, please contact us at nle@tfl.gov.uk
or call our 24/7 Helpline on

0343 222 2424 (Option 1)

nle@tfl.gov.uk

0343 222 2424 (option 1)

tfl.gov.uk/northern-line-extension