

# End of year report 2008/2009 London Cycle Training Partnership



Cycling Centre of Excellence

Transport for London

June 2009

## Contents

1. Introduction .....	3
2. Current Appraisal of Cycle Training in London .....	8
3. Models for delivery of cycle training .....	12
4. Conclusions & Future Plans.....	18
5. Appendices: London borough cycle training outputs.....	19
Barking & Dagenham .....	20
Bexley .....	25
Brent.....	27
Bromley .....	29
Camden.....	31
City of London .....	33
Croydon .....	36
Ealing .....	38
Enfield.....	40
Greenwich.....	42
Hackney .....	44
Hammersmith & Fulham .....	46
Haringey .....	48
Harrow .....	50
Havering.....	52
Hillingdon.....	54
Hounslow.....	56
Islington .....	58
Kensington & Chelsea.....	60
Kingston upon Thames.....	63
Lambeth.....	65
Lewisham.....	67
Merton .....	69
Newham .....	71
Redbridge .....	73
Richmond upon Thames.....	75
Southwark .....	77
Sutton .....	79
Tower Hamlets.....	81
Waltham Forest.....	83
Wandsworth.....	85
Westminster.....	87

## 1. Introduction

This end of year 2008/2009 report summarises the delivery of cycle training by each London borough. The report is based on data collected by the Cycling Centre of Excellence (CCE) from the boroughs.

The aim of this report to enable transparency and clarity on the actual delivery and outputs of cycle training, both to identify and publicise excellent ground-breaking work going on in London, as well as to highlight areas for development. With future changes in Local Implementation Plan (LIP) funding from Transport for London (TfL) to the London boroughs after 2010/2011, decisions on funding for child and adult cycle training will be made locally. It is hoped that boroughs will use the information collated in this report to inform their plans for cycle training in the future.

CCE holds annual stakeholder meetings with all of the London boroughs and private sector cycle training companies operating in London so that current issues relating to delivery of the training can be addressed through joint working. The outputs from the most recent round of these meetings held in November/December 2008 were published by CCE for the London Cycle Training Partnership (LCTP) in January 2009.

### 1.1 Funding for cycle training

Reforms to the LIP process by which boroughs receive funding from TfL will take place from 2010/11 and beyond. These will have significant impacts, since decisions about funding for cycle training and other cycling activities will in future be made locally by individual boroughs. There will be no ongoing funding set aside or allocated by TfL for borough cycle training, although there may be some ring-fenced money linked with specific projects e.g. Cycle Hire Scheme.

A total of £168m funding is provided to London boroughs each year, managed through the LIP process. As of 2009/10 over 20 separate programmes existed, e.g. Cycling, Road Safety, Bus Priority, Walking, School Travel Planning etc for which boroughs have sought funding on an annual basis. These funded over 2 000 separate schemes across the capital. Boroughs have raised concerns for some time over the level of resource required and the bureaucracy and lack of flexibility within the current system. Therefore in line with the objectives of the City Charter signed by the Mayor with London Councils, TfL set up a working group in 2008 with London Travel Advisory Group (LoTAG) representatives, London Councils and the GLA to implement a series of reforms in advance of the Mayors Transport Strategy 2.

The LIP reforms that were identified and are being taken forward are:

- Reduced bureaucracy – cancelling the need for annual progress reports.
- Less ring-fenced spend – new payments of £100k per borough for transport activities of their choice.

- Greater certainty of funding over several years – traditionally TfL has allocated funding to the boroughs for one year. Future funding will be allocated on a 3 year basis.
- Fewer programmes – agreement with the boroughs to reduce the number of programmes from in excess of 20 down to 5 for 2010/11 and beyond.
- Needs based funding – informing boroughs in advance of the likely allocations available to them so they can work up an appropriate programme of measures, and thereby reduce abortive work.

The LIP reforms timetable for 2010/11 is shown in the Table 1.

Date	Actions
April 2009	Allocations for Roads and Bridges, Corridors, Neighbourhoods and Smarter Travel programmes given to boroughs
April – September 2009	Plan schemes Interventions to implement in 2010/11 Attend workshops for advice regarding planning for corridors and best practice regarding Smarter Travel programmes Liaise with TfL regarding the programming of signal schemes
September 2009	Submit planning information to TfL by September 21 2009
September – December 2009	TfL review planning information in relation to Mayoral priorities Signal slot availability Impact on Olympics and Crossrail Possible proposals to remove infrastructure previously funded by TfL Discuss with boroughs any issues arising from this review process
December 2009	Confirm boroughs' plans for scheme/intervention delivery Annual Progress Reports for 2008/09 to be issued to each borough

Table 1: Timetable for 2010/11 reform LIPs process

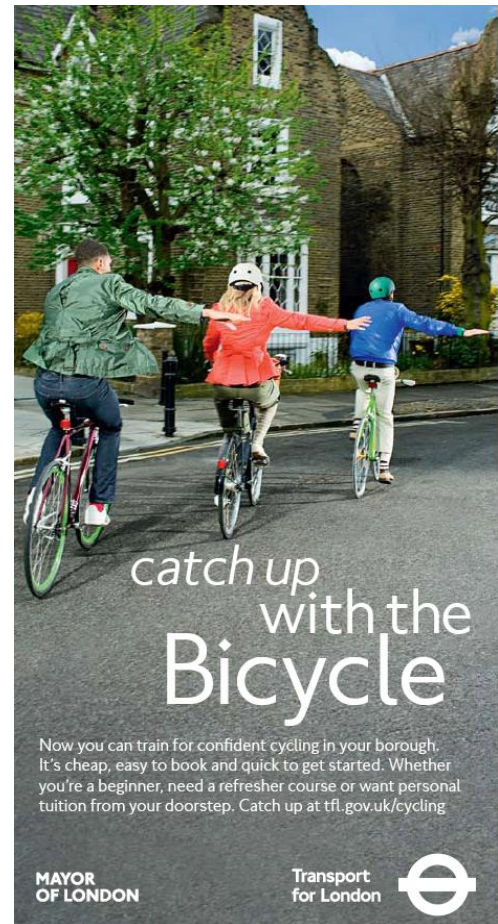
The Cycle Training will remain within the Cycling programme and will therefore form part of the Corridors programme in 2010/11. However, there may be options for Cycle Training funding to move into the Smarter Travel Programme along with other behavioural and education measures, after LIPs2 2011 onwards after consultation with borough cycle training officers.

Current programmes	New programmes
Bridge Strengthening & Assessment	Maintenance – Continue to allocate on the basis of condition survey information
Principal Road Renewal	
Bus priority i/c 3G	Corridors – Change to a formula
Bus stop Accessibility	
LCN Plus	
Cycling	
Walking	
Local Safety Schemes	
20 mph zones	Neighbourhoods – change to a formula
Freight	
Regeneration	
Environment	
Accessibility	
Controlled Parking Zones	
School Travel Plans	Smarter Travel – change to a formula
Travel Awareness	
Education, Training & Publicity	
Workplace Travel Plans	
Station Access	Area based schemes – Continue to use bidding process designed with the boroughs, but only for schemes over £250k
Streets for People	
Town Centres	

Table 2: New consolidated programmes

## 1.2 TfL Marketing of cycling and cycle training

### “Catch up with the bicycle” Summer 2009





catch up  
with the  
**Bicycle**

To get started  
visit [tfl.gov.uk/cycling](http://tfl.gov.uk/cycling)

MAYOR OF LONDON

Transport for London 



catch up  
with the  
**Bicycle**

To get started  
visit [tfl.gov.uk/cycling](http://tfl.gov.uk/cycling)

MAYOR OF LONDON

Transport for London 

## 2. Current Appraisal of Cycle Training in London

Cycle training in London has developed well in London and all boroughs now offer free cycle training to children and subsidised cycle training to adults. The quality of the training was assessed by CCE during 2008 and demonstrates that the National Standards for Cycle training have reached every borough in London. There is also a large pool of individual National Standard Trained Instructors delivering cycle training across the city, details of whom can be found online<sup>1</sup>. All training offered in London is therefore known to be of excellent quality.

### 2.1 National Standard Instructors

In order to qualify as a National Standards Instructor, an individual must complete a 4 day training course, followed by a mentoring session 6 months later. There are currently five Instructor Training Providers (ITPs) in London who can train new cycling instructors to National Standards; Royal borough of Kingston upon Thames, London borough of Bromley, Cycle Training UK (CTUK), Cyclinginstructor.com and Cycle Experience.

The course costs approx £600 per person and there is a national bursary administered by Cycling England which covers half the cost of attendance<sup>2</sup>. In 2009/10 as in previous years TfL/CCE will match fund the remaining cost of the course to an individual but only on the recommendation of a London borough or public sector organisation e.g. the Metropolitan or City of London police. From 2010/11 onwards, boroughs can decide whether to match fund individuals the remaining half of the cost of the National Standards training course.

There are also a number of other ITPs close to London that train instructors. Some National Standards instructors operating in London have previously trained at ITPs in York and Bristol. An up to date list of all ITPs in England is available online<sup>3</sup>.

### 2.2 Bikeability

Bikeability cycle training was launched in April 2007 and national estimates as of May 2009 that 77% of Local Authorities outside of London are either Bikeability registered or contracting to a registered provider. This is made up of 46% Bikeability registered and 31% contracting out to a registered supplier. There have been a number of boundary changes and the number of Authorities has gone up although the change has only slightly affected the comparability of the data. By the end of the 2008/2009 financial year the number was 76%

---

<sup>1</sup> [ctc.org.uk/DesktopDefault.aspx?TabID=4747](http://ctc.org.uk/DesktopDefault.aspx?TabID=4747)

<sup>2</sup> [bikeability.org.uk/professionals/instructor\\_bursaries.php](http://bikeability.org.uk/professionals/instructor_bursaries.php)

<sup>3</sup> [ctc.org.uk/DesktopDefault.aspx?TabID=4211](http://ctc.org.uk/DesktopDefault.aspx?TabID=4211)



79% i.e. 26 of the 33 London boroughs can also offer Bikeability badges and materials to child trainees. Many boroughs contract all or part of their cycle training service to private companies, and nearly all of the private sector cycle training companies operating in London are also staffed by National Standards Instructors. Many of these companies are also Bikeability registered, and so are also able to offer Bikeability materials to their trainees.

Bikeability schemes nationally are quality assured by assessing the documents provided during the registration process and in some cases through assessment visits. In London, all boroughs were assessed independently either through visits to the borough itself and observation of cycle training, or through assessment of their outsourced private cycle training company. Bikeability registration enables the borough to offer the national award scheme of badges and packs to trainees and access to other resources. The Bikeability website now has a full set of teaching resources including interactive games and downloadable activities [bikeability.org.uk](http://bikeability.org.uk)

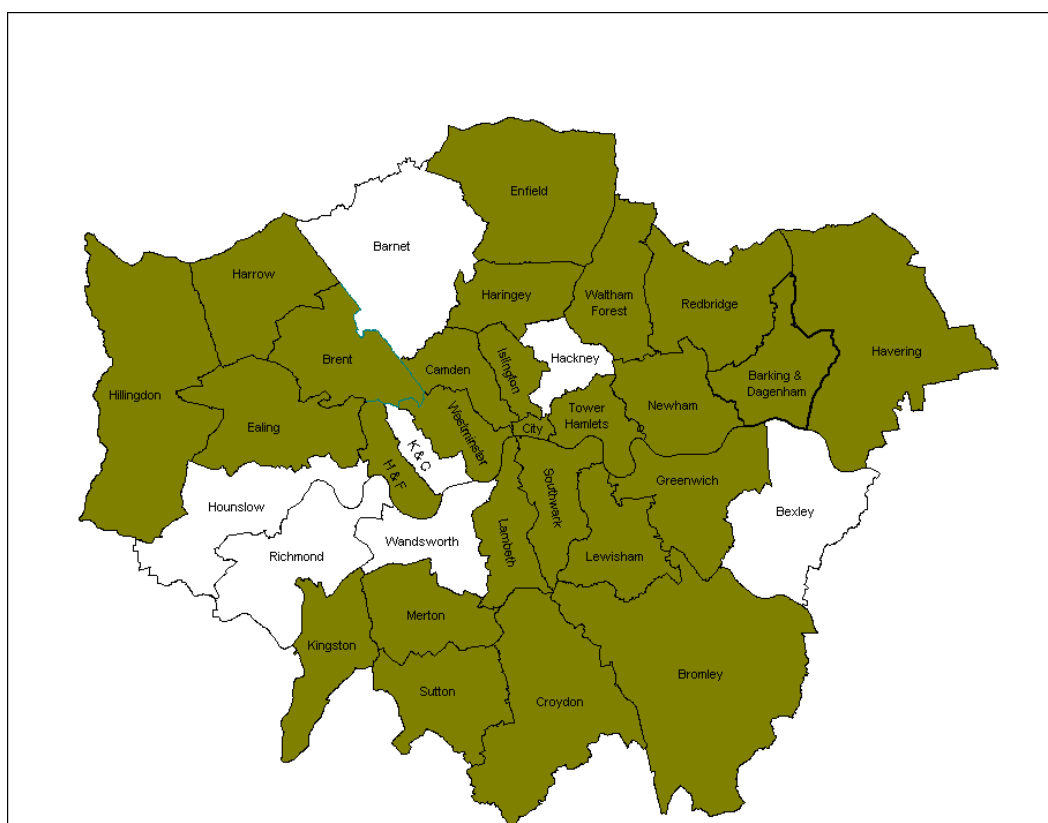


Figure 1: Bikeability cycle training in London 08/09

### 2.3 Assessment of Child cycle training

Free child cycle training is offered in all 33 London boroughs. The appendices show borough by borough delivery of cycle training, but overall in 2008/09 over 39 118 children received some cycle training, with over half of these trainees 22,565 receiving Level 2 i.e. on road training. This equates to 48% eligible Year 6 children receiving some cycle training, while 28% of eligible Year 6 children received Level 2 on-road training in 2008/09

Targets for the London Cycle Training Partnership and individual London boroughs can be set after consultation with stakeholders. In principle TfL/CCE suggest that all eligible Year 6 children should receive at least Level 2 cycle training by 2012. Furthermore in London locally boroughs should offer Level 3 cycle training if necessary to enable them to cycle to primary and then secondary school.

## 2.4 Schools and cycle training

TfL/CCE have requested boroughs to provide information on the number of schools that have been offered and have received cycle training in 08/09 This data can be compared with the number of schools that have requested cycle training as part of their School Travel Plan and forms the basis for an assessment of the demand for school cycle training in each borough.

2576 schools were described by the London boroughs as eligible for cycle training. 2144 (83%) were offered cycle training and 1209 (47%) received training. These figures are broken down on a borough by borough basis in the appendices.

## 2.5 Adult cycle training

Adult cycle training is offered in all the London boroughs, although there is some variation across the boroughs as to whether the training is free or at a cost to the individual, and to whom it is available, e.g. if you live and/or work in the borough. 5875 adults received cycle training in 2008/09 through the London boroughs a significant increase on previous years. TfL will be promoting adult cycle training further as part of the summer marketing campaign in 2009 and further resource for cycle training will be made available in May 2010 linked with the launch of the Cycle Hire scheme in central London and the Cycling Highways routes.

The average cost of adult cycle training where an individual has 2 sessions can be estimated at £100, although there is considerable variation both between the number of sessions that an individual might require, as well as the cost per session to the local authority

Year	2006/07	2007/08	2008/09
Number of adults received training	2983	3989	5875

Table 3: Number of adults that have received cycle training

## 2.6 Cycle training for individuals with special needs

Cycle training for individuals with special needs is offered in 26 of the 33 boroughs, either directly through the borough and TfL Local Implementation Plan (LIP) funding, or through TfL Community Cycling Fund for London (CCfFL) managed by London Cycling Campaign (LCC). TfL is also represented on the London Disabled Cycling Forum (LDCF) which discusses issues related to special needs cycling.

When collating 2007/08 figures it was noted that there was considerable variation in the reporting and definitions used to assess special needs training. Therefore it was agreed that special needs cycle training is not a specific output that should be collected or monitored and that in principle all eligible children in London should be offered cycle training, including children attending special schools.

Cycling for individuals with special needs may also be supported through other sources e.g. Health and Social funding and opportunities for this resource should be sought by London boroughs to complement their transport budgets for cycle training.

### 3. Cycle training models and outputs

There are a number of different models for the delivery of cycle training, and in London, these are split almost exactly evenly across the boroughs. Thirteen boroughs outsource their cycle training completely to external private providers, while a further six retain all of their training in-house, mostly run by borough Road Safety staff. The remaining ten boroughs use a combination of both methods, outsourcing in part and retaining some training in-house.

In general the cost per head child trained is greater when the borough chooses to outsource to an external provider. This is likely to be explained by the fact that overheads such as administration facilities, telephone and email access and possibly staffing costs are being absorbed internally by London boroughs.

Individual London boroughs decide on their model for delivery of cycle training, and each model has both advantages and disadvantages. As of 2009/10, TfL has allocated cycle training funding of £2.8m across the London boroughs and has been unable to meet all funding requests for increased support. However, from 2010/11 onwards boroughs will decide locally how they decide to offer and fund cycle training. It is hoped that the information presented in this report will enable boroughs to assess the different models of delivery of adult and child cycle training and make an assessment of the differential value for money offered by different approaches.

It should be noted that outside of London, Cycling England offers funding to Local Authorities for cycle training of £40 per head to train a child to Level 2 with any extra costs to be covered by the Local Authority itself. TfL will engage in discussions with Cycling England in the light of changes in LIP funding to determine if there are opportunities for the £40 funding to also be made available to London boroughs after 2009/10.

London Borough	£ ,000's				
	LIP funding 05/06	LIP funding 06/07	LIP funding 07/08	LIP funding 08/09	LIP funding 09/10
Barking & Dagenham	30	35	100	75	75
Barnet	40	43	93	107	107
Bexley	42	21	30	20	55
Brent	80	80	80	130	110
Bromley	71	71	111	150	150
Camden	58	48	55	82	70
City of London	5	0	30	30	32
Croydon	57	42	65.9	147	147
Ealing	105	99	87	135	135
Enfield	20	25	25	20	60
Greenwich	80	43	100	110	110
Hackney	188	188	234	200	200
Hammersmith & Fulham	65	21	60	60	60
Haringey	60	60	80	80	80
Harrow	25	32	48.5	92.5	45
Havering	0	0	20	35	60
Hillingdon	20	18	40	79	85
Hounslow	80	79	81.1	165	160
Islington	60	60	78	110	100
Kensington & Chelsea	30	22	36.1	49.28	55
Kingston upon Thames	79	100	100	100	100
Lambeth	95	95	185.2	190	170
Lewisham	45	45	84.8	104	100
Merton	20	34	42.2	48	48
Newham	30	55	110	135	135
Redbridge	15	22	17	37	20
Richmond upon Thames	45	30	52.2	53	70
Southwark	85	85	93.8	127	125
Sutton	52	43	87.5	125.34	125
Tower Hamlets	47	18	90	150	150
Waltham Forest	30	36	86.5	110	110
Wandsworth	30	25	25	40	60
Westminster	25	20	25	25	45
<b>Total</b>	<b>1714</b>	<b>1595</b>	<b>2453.8</b>	<b>3121.12</b>	<b>3154</b>

Table 4: A summary of the LIP funding for each borough since 2005 to 2010.

London Borough	Total number of children trained 06/07	Total number of children trained 07/08	Total number of children trained 08/09	Changes in children trained since 07/08
Barking & Dagenham	752	2000	2795	↑
Barnet	500	518	682	↑
Bexley	482	287	837	↑
Brent	311	419	455	↑
Bromley	1096	2091	2450	↑
Camden	449	556	825	↑
City of London	132	228	125	↓
Croydon	1200	872	971	↑
Ealing	528	552	755	↑
Enfield	145	276	692	↑
Greenwich	750	1093	1204	↑
Hackney	1083	1072	1028	↓
Hammersmith & Fulham	200	374	206	↓
Haringey	311	515	630	↑
Harrow	240	375	936	↑
Havering	36	580	709	↑
Hillingdon	600	1500	1700	↑
Hounslow	1700	1581	1796	↑
Islington	350	826	2076	↑
Kensington & Chelsea	200	666	759	↑
Kingston upon Thames	1249	1216	1262	↑
Lambeth	468	382	1068	↑
Lewisham	350	837	546	↓
Merton	666	552	1056	↑
Newham	25	352	760	↑
Redbridge	250	327	336	↑
Richmond upon Thames	1750	3605	4014	↑
Southwark	412	765	544	↓
Sutton	1142	1152	1495	↑
Tower Hamlets	1500	3283	4000	↑
Waltham Forest	520	987	1180	↑
Wandsworth	400	653	999	↑
Westminster	220	201	297	↑

Table 5: Summary of the number of children trained each year by each borough from 2006 – 2009.

Key: ↑ - Increase; ↓ - Decrease; → - No change

London Borough	2006/07	2007/08	2008/09
	% Yr 6 received L2 training	% Yr6 received L2 training	% Yr6 received L2 training
Barking & Dagenham	12%	25%	37%
Barnet	10%	11%	15%
Bexley	16%	7%	21%
Brent	9%	10%	7%
Bromley	19%	37%	46%
Camden	17%	30%	42%
City of London	0%	100%	83%
Croydon	5%	5%	25%
Ealing	15%	10%	15%
Enfield	4%	4%	5%
Greenwich	15%	27%	31%
Hackney	15%	28%	27%
Hammersmith & Fulham	16%	255	17%
Haringey	11%	14%	19%
Harrow	8%	10%	28%
Havering	1%	20%	23%
Hillingdon	11%	22%	16%
Hounslow	17%	15%	29%
Islington	11%	15%	47%
Kensington & Chelsea	13%	18%	39%
Kingston upon Thames	75%	73%	84%
Lambeth	17%	14%	25%
Lewisham	3%	22%	18%
Merton	23%	18%	32%
Newham	4%	6%	13%
Redbridge	0%	4%	6%
Richmond upon Thames	91%	91%	100%
Southwark	3%	26%	17%
Sutton	38%	39%	60%
Tower Hamlets	4%	22%	58%
Waltham Forest	8%	31%	21%
Wandsworth	4%	20%	21%
Westminster	15%	14%	21%

Table 6: Summary of the percentage of Year 6 children that have received Level 2 training across each borough.

London Borough	2008/09 % Schools offered training	2008/09 % Schools received training
Barking & Dagenham	100%	39%
Barnet	95%	95%
Bexley	73%	34%
Brent	n/k	n/k
Bromley	77%	66%
Camden	67%	46%
City of London	100%	60%
Croydon	100%	37%
Ealing	77%	134%
Enfield	83%	26%
Greenwich	100%	45%
Hackney	35%	35%
Hammersmith & Fulham	53%	24%
Haringey	0%	44%
Harrow	45%	39%
Havering	100%	41%
Hillingdon	75%	37%
Hounslow	85%	71%
Islington	91%	82%
Kensington & Chelsea	100%	38%
Kingston upon Thames	78%	62%
Lambeth	69%	34%
Lewisham	100%	46%
Merton	100%	81%
Newham	85%	26%
Redbridge	72%	13%
Richmond upon Thames	91%	80%
Southwark	100%	57%
Sutton	82%	61%
Tower Hamlets	100%	30%
Waltham Forest	100%	60%
Wandsworth	100%	48%
Westminster	64%	18%

Table 7: Number of schools offered and received cycle training



London Borough	Total number of adults trained 2006/07	Total number of adults trained 2007/08	Total number of adults trained 2008/09	Changes in adults trained since 07/08
Barking & Dagenham	100	7	29	↑
Barnet	0	43	109	↑
Bexley	0	5	12	↑
Brent	60	229	438	↑
Bromley	120	68	63	↓
Camden	154	253	354	↑
City of London	100	91	186	↑
Croydon	25	22	197	↑
Ealing	251	254	618	↑
Enfield	57	40	21	↓
Greenwich	15	115	198	↑
Hackney	372	252	235	↓
Hammersmith & Fulham	100	133	150	↑
Haringey	238	138	123	↓
Harrow	0	100	200	↑
Havering	0	0	1	↑
Hillingdon	0	0	0	→
Hounslow	45	35	63	↑
Islington	85	120	233	↑
Kensington & Chelsea	36	30	50	↑
Kingston upon Thames	90	199	121	↓
Lambeth	328	272	469	↑
Lewisham	100	306	389	↑
Merton	70	47	56	↑
Newham	100	115	250	↑
Redbridge	0	56	75	↑
Richmond upon Thames	70	60	60	→
Southwark	100	458	549	↑
Sutton	9	14	27	↑
Tower Hamlets	0	131	226	↑
Waltham Forest	64	105	88	↓
Wandsworth	54	42	80	↑
Westminster	240	249	205	↓

Table 8: Adults training outputs from each of the boroughs.

Key: ↑ - Increase; ↓ - Decrease; → - No change

## 4. Conclusions & Future Plans

The data presented in this report summarises the funding and individual outputs for cycle training from all 33 London boroughs. It is based on data provided and verified by boroughs and collated by TfL/CCE.

Cycle training in London is of excellent quality overall and almost all cycle training is being delivered by qualified National Standards instructors. Bikeability registration of schemes is also progressing very well in London, and most of those boroughs who have not yet registered would be able to get through the process with relative ease. TfL strongly encourages the remaining boroughs to register for Bikeability to enable all boroughs to move towards offering Bikeability materials to child trainees in 09/10 and capitalise on Cycling England promotional campaigns during their “Year of Bikeability 2009”

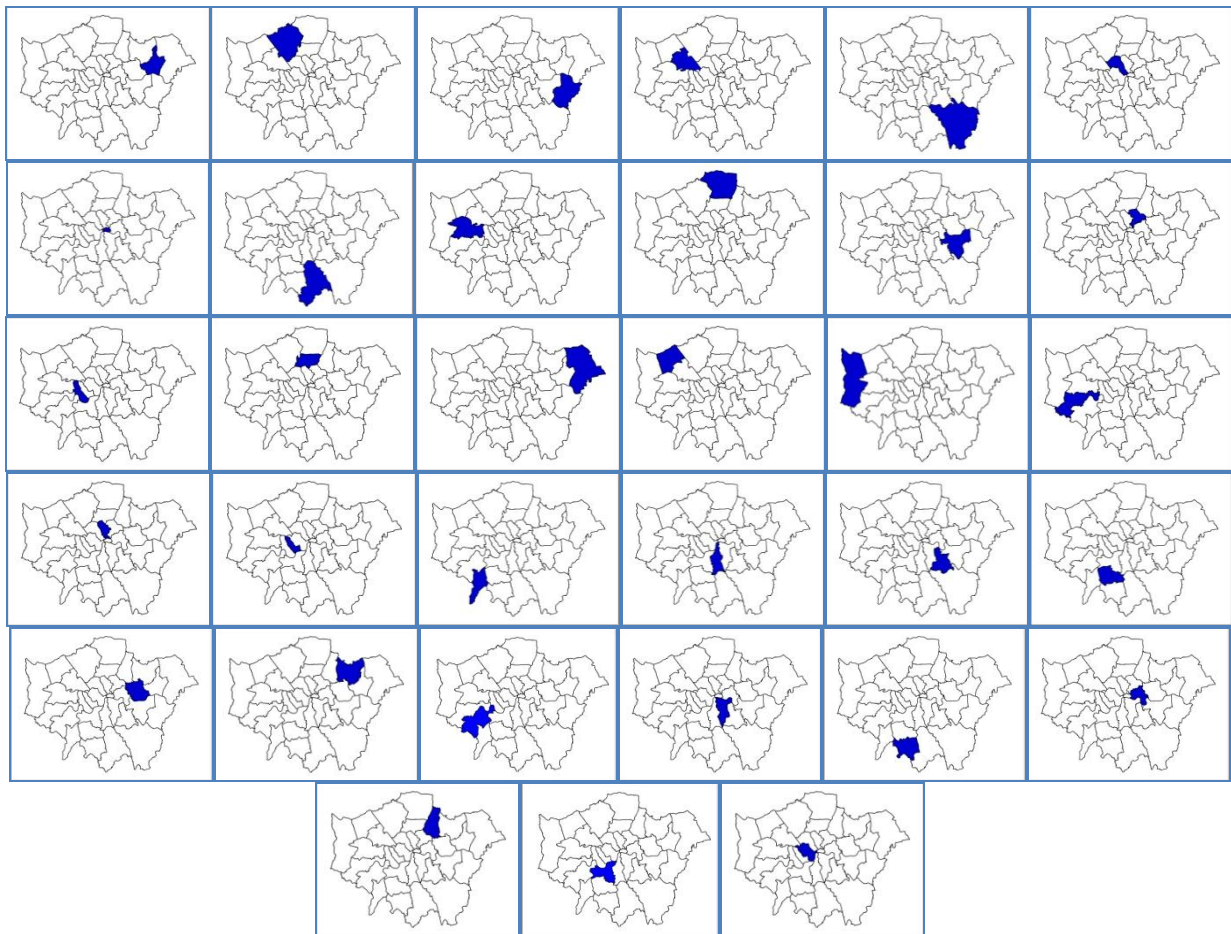
### 4.1 Target setting for child and adult cycle training

After 2010/11 boroughs will be responsible for their own funding allocations and there will be no ring-fenced resource from TfL specifically for cycle training. Some sources of short-term resource may be made available linked for example with the launch of the Cycle Hire scheme in central London, but in the main, cycle training resource will be allocated from within the LIP allocation for Corridors. In terms of target setting, TfL/CCE recommends that boroughs adopt the national Cycling England target that all Year 6 children should receive at least Level 2 cycle training by 2012. This means that all schools that request cycle training in their School Travel Plans should be offered it, and then the number of children in each school that receive it should also be increased so that all Year 6 children are offered training by 2012.

For adult cycle training it is more difficult to set specific targets, as this type of service is very often demand led. However since all London boroughs now have the capacity to offer cycle training to adults, TfL/CCE recommends that future funding allocations be made on a demand led rolling annual basis. It is hoped that the summary data presented in this report may assist in the suitable allocation of funding for training within each borough. Furthermore, resources may be available through public health sector, particularly for tackling problems of obesity, and boroughs are advised to look into opportunities for Health Sector funding through their local Primary Care Trust.

In principle, cycle training should also be available to all, regardless of any specific needs or abilities. This can sometimes present difficulties where specialised equipment or modified bicycles are required to assist with training. Boroughs are advised to consult the London Disabled Cycling Forum (LDCF), a group made up of representatives from a number of all ability cycle trainers and who have considerable expertise in this area.

## 5. Appendices: London borough cycle training outputs





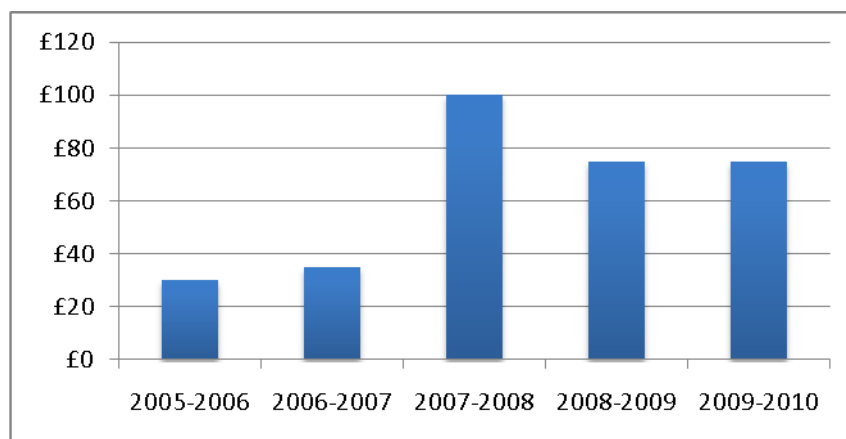
## Barking & Dagenham

**Contact:** Craig Elliott, Cycle Training Officer T: 020 8227 3950 E:craig.elliott@lbbd.gov.uk

**Delivery model:** Part outsourcing to Cycle Experience

**Bikeability:** Borough scheme and provider are both Bikeability registered

### LIP funding for cycle training



2005-2006	2006-2007	2007-2008	2008-2009	2009-2010
£30,000	£35,000	£100,000	£75,000	£75,000

### Cycle training outputs – schools

2008/09	Total eligible schools	Total offered	% offered	Total received	% received
Total number schools	64	64	100%	25	39%

### Cycle training outputs – children

Total LIP spend on child training 08/09 £70k

Year	Total children trained	Total children trained to Level 2	% children trained to Level 2
2006/07	752	300	40%
2007/08	2000	603	30%
2008/09	2795	900	32%

### Progress on targets

Year	Total number children eligible for training in Yr 6	Total number children trained to Level 2	% eligible children that received training to Level 2
2007/08	2459	603	25%
2008/09	2459	900	37%

### Cycle training outputs – adults

Total LIP spend on adult cycle training 08/09 = £5k

100 adults requested training

Year	Total adults trained
2006/07	100
2007/08	7
2008/09	29

### Suggested action plan

- Currently 37% of Year 6 receive Level 2 training. Increase towards 100% by 2012.
- Assess capacity to meet adult cycle training demand



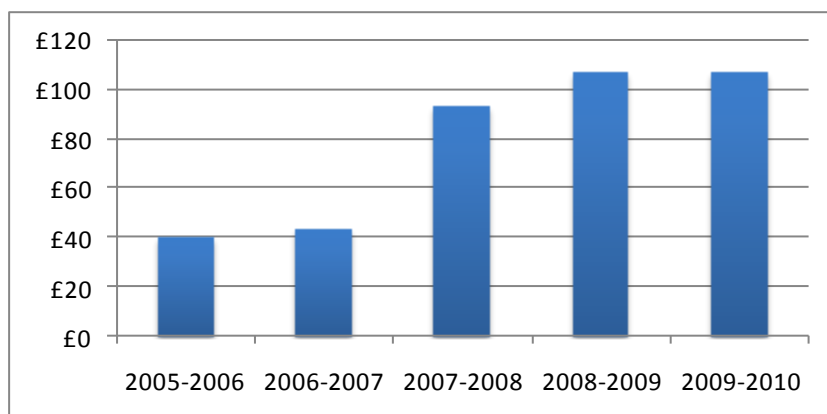
## Barnet

**Contact:** Ilias Ioannou, Road Safety Officer T: 020 8359 7108 E: [ilias.ioannou@barnet.gov.uk](mailto:ilias.ioannou@barnet.gov.uk)

**Delivery model:** Part in house delivery and part outsourced to The Cycle School

**Bikeability:** Barnet scheme is in progress

### LIP funding for cycle training



2005-2006	2006-2007	2007-2008	2008-2009	2009-2010
£40,000	£43,000	£93,000	£107,000	£107,000

### Cycle training outputs – schools

2008/09	Total eligible schools	Total offered	% offered	Total received	% received
Schools & cycle training	150	143	95%	2 <sup>4</sup>	1%

<sup>4</sup> Year 6 cycle training in Barnet takes during half term holidays at 2 schools, and pupils travel to these 2 schools.

## Cycle training outputs - child

Total LIP spend on child cycle training 2008/09 = £94k

Year	Total children trained	Total children trained to L2	% children trained to L2
2006/07	500	349	70%
2007/08	518	398	77%
2008/09	682	519	76%

## Progress on targets

Year	Total number eligible Yr 6 children	Total number children trained to L2	% eligible Yr 6 that received L 2
2007/08	3470	398	12%
2008/09	4000	519	13%

## Cycle training outputs – adults

Total LIP spend on adult cycle training 08/09 = £13k

189 adults requested cycle training in 08/09

Year	Total adults trained
2006/07	0
2007/08	43
2008/09	109

## Synopsis

Barnet's Year 6 cycle training takes place in the holidays and peer education is used for these sessions. Barnet have also put together cycle route audits for 5 secondary schools. SEN numbers have been included in pupil figures and 81 SEN pupils were trained up to level 2 at 3 special schools. 174 secondary pupils were trained above level 2, 345 Year 6 pupils to level 2 and 82 Year 5 pupils to level 1.

"It should be recognised that this training scheme with its emphasis on empowering peer education is extremely valuable and a model that to my knowledge is not seen anywhere else in cycle training schemes" Pete Z, SDG

---

Primary schools receive cycle training through the borough Road Safety scheme, and secondary school cycle training, SEN school cycle training, adult cycle training and school cycle audits are outsourced to The Cycle School, headed by two National standards accredited instructors.

### **Suggested action plan**

- Barnet to apply for Bikeability registration during 2009/10
- The Cycle School to apply for Bikeability registration during 2009/10.
- Currently 13% of Year 6 receive Level 2 training. Increase towards 100% of Year 6 by 2012
- Assess capacity to meet potentially increasing adult cycle training demand





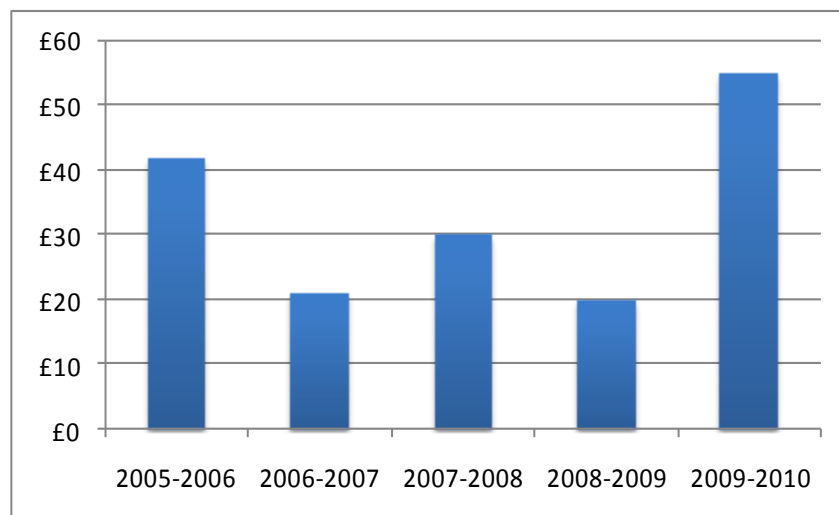
## Bexley

**Contact:** Chris King, Interim Road Safety Officer T: 020 8308 7855 E: [chris.king@bexley.gov.uk](mailto:chris.king@bexley.gov.uk)

**Delivery model:** All cycle training delivered by borough Road Safety team

**Bikeability:** In progress.

### LIP funding for cycle training



2005-2006	2006-2007	2007-2008	2008-2009	2009-2010
£42,000	£21,000	£30,000	£20,000	£55,000

### Cycle training outputs – schools

2008/09	Total eligible schools	Total offered	% offered	Total received	% received
Schools & cycle training	85	62	73%	29	34%

### Cycle training outputs – child

Year	Total children trained	Total children trained to L2	% children trained to L2
2006/07	482	482	100%
2007/08	287	200	70%
2008/09	837	595	71%

### Progress on targets

Year	Total number eligible Yr 6 children	Total number children trained to L2	% eligible Yr 6 children that received L2
2007/08	3002	200	7%
2008/09	2710	595	22%

### Cycle training outputs – adults

Year	Total adults trained
2006/07	0
2007/08	5
2008/09	12

### Synopsis

Cyclist training in Bexley has fallen short of its potential in the past but during the year 2008/09 Bexley have recruited and trained an extra five National Standards Instructors. Bexley has significantly increased the number of children trained in mainstream schools and have also delivered one course in a special needs school. They are also offering training to adults and for family groups and training courses also run during half term and the Easter and Summer breaks.

### Suggested action plan

- Bexley to register for Bikeability, so all materials issued can be Bikeability.
- Currently 22% Year 6 children receive Level 2 training. Increase towards 100% by 2012.
- Assess capacity to meet potentially increasing adult cycle training demand



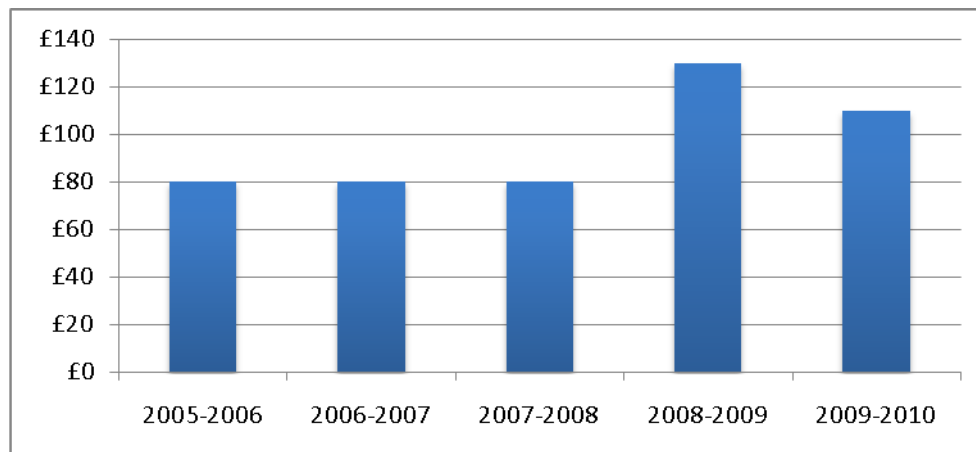
## Brent

**Contact:** Adrian Pigott, Principal Transport Planner T: 020 8937 5168 E: Adrian.Pigott@brent.gov.uk

**Delivery model:** Outsourced in full to CTUK

**Bikeability:** CTUK courses are Bikeability

### LIP funding for cycle training



2005-2006	2006-2007	2007-2008	2008-2009	2009-2010
80	80	80	95	110

### Cycle training outputs – schools

2008/09	Total eligible schools	Total offered	% offered	Total received	% received
Schools & cycle training	n/k	57	n/k	18	n/k

### Cycle training outputs – child

Total LIP spend on child cycle training = £34k

Year	Total children trained	Total children trained to L2	% children trained to L2
2006/07	311	280	90%
2007/08	419	300	72%
2008/09	455	232	51%

### Progress on targets

Year	Total number eligible Yr 6 children	Total number children trained to L2	% eligible Yr 6 children that received L2
2007/08	3101	300	10%
2008/09	3101 <sup>5</sup>	232	8%

### Cycle training outputs – adults

Total LIP spend on adult cycle training = £34k

Year	Total adults trained
2006/07	60
2007/08	229
2008/09	438

### Synopsis

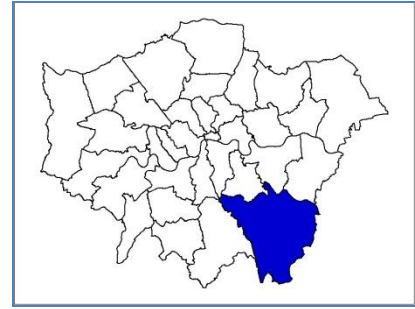
All of Brent cycle training is outsourced to CTUK who deliver high quality Bikeability training. Brent has also offered cycle training to Woodfield Special School, BETS (Brent Educational Tuition Service – for young people outside of the school system) 3<sup>rd</sup> Kenton Scouts, St Gregory's Science College. The SwamiNarayan Hindu temple and school is making plans to develop and become a cycling school with NS instructors for the local Hindu community.

### Suggested action plan

- Currently 8% of eligible Year 6 pupils receive Level 2 training. Increase towards 100% by 2012.
- Assess capacity to meet adult cycle training demand

---

<sup>5</sup> Number eligible Yr 6 in Brent in 08/09 estimated from DfT 07/08 figures



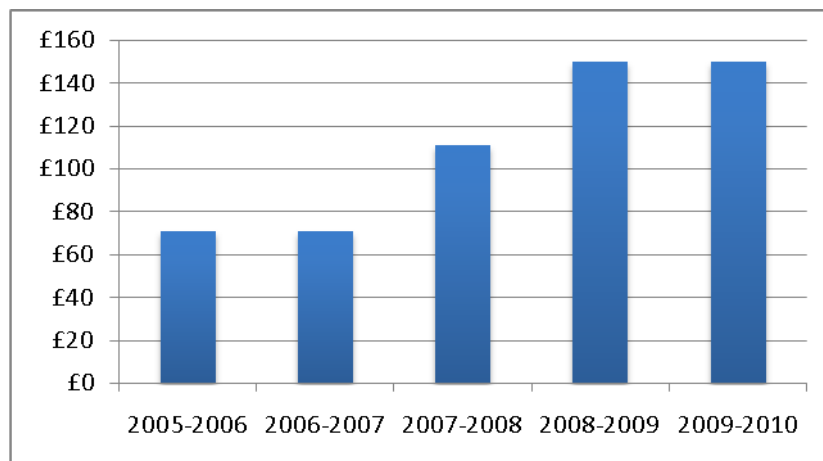
## Bromley

**Contact:** Sarah Baker and Jo Luff, Cycle Team Leaders, Environmental Services Department T: 020 8313 4975 E: [sarah.baker@bromley.gov.uk](mailto:sarah.baker@bromley.gov.uk) & [jo.luff@bromley.gov.uk](mailto:jo.luff@bromley.gov.uk)

**Delivery model:** All training is delivered through the borough Road Safety team

**Bikeability:** LB Bromley is a registered Bikeability scheme

### LIP funding for cycle training



2005-2006	2006-2007	2007-2008	2008-2009	2009-2010
71	71	111	155	150

### Cycle training outputs – schools

2008/09	Total eligible schools	Total offered	% offered	Total received	% received
Schools & cycle training	111	86	77%	73	66%

### Cycle training outputs – child

Total LIP spend on child cycle training = £143.7k

	Total children trained	Total children trained to L2	% children trained to L2
2006/07	1096	658	60%
2007/08	2091	1270	61%
2008/09	2450	1570	64%

### Progress on targets

Year	Total number eligible Yr 6 children	Total number children trained to L2	% eligible Yr 6 children that received L2
2007/08	3434	1270	37%
2008/09	3725	1570	42%

### Cycle training outputs – adults

Total LIP spend on adult cycle training = £6.3k

Year	Total adults trained
2006/07	120
2007/08	68
2008/09	63

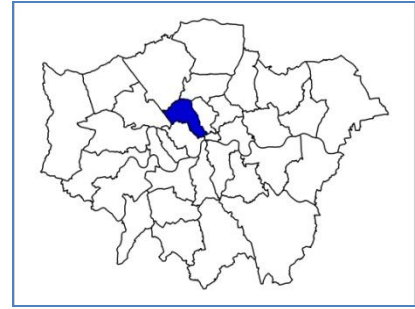
### Synopsis

Bromley delivers flagship in house Bikeability cycle training. Their bespoke data management system enables excellent partnership working with School Travel Advisors to ensure all schools that request cycle training in their travel plans receive it.

Bromley also became accredited as an Instructor Training Centre Provider and ran their first pilot courses to train National Standards instructors in September 2008 and £5k of their LIP allocation in 08/09 was spent on ITP course development. Bromley now joins Kingston as the only other London borough ITP.

### Suggested action plan

- Currently 42% of Year 6 receive Level 2 training. Increase towards 100% by 2012
- Assess capacity to meet adult cycle training demand



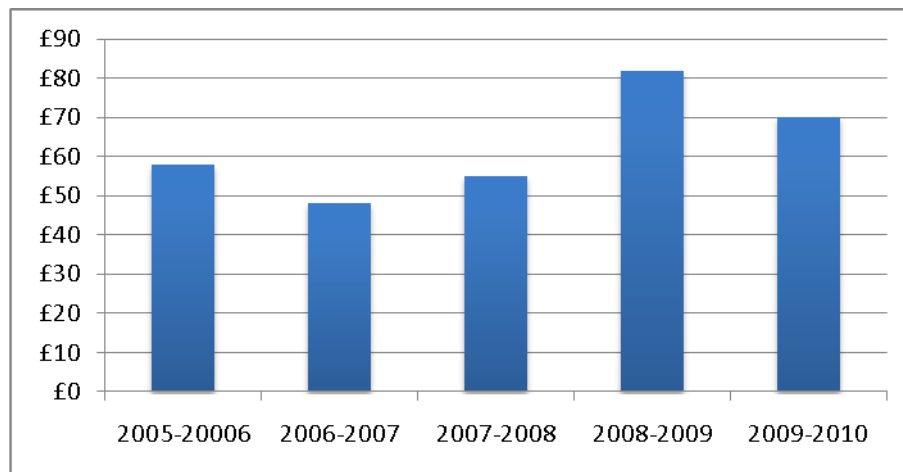
## Camden

**Contact:** Richard Riddle, Cycle Training Officer T: 020 7974 5537 E: richard.riddle@camden.gov.uk

**Delivery model:** Mixed – delivered both in house and by cyclinginstructor.com

**Bikeability:** LB Camden and cyclinginstructor.com are both registered Bikeability schemes

### LIP funding for cycle training



2005-2006	2006-2007	2007-2008	2008-2009	2009-2010
58	48	55	86.5	70

### Cycle training outputs – schools

2008/09	Total eligible schools	Total offered	% offered	Total received	% received
Schools & cycle training	67	45	67%	31	46%

### Cycle training outputs – child

Total LIP spend on child cycle training = £52k

Year	Total children trained	Total children trained to L2	% children trained to L2
2006/07	449	245	55%
2007/08	556	432	78%
2008/09	825	599	73%

### Progress on targets

Year	Total number eligible Yr 6 children	Total number children trained to L2	% eligible Yr 6 children that received L2
2007/08	1455	432	30%
2008/09	1410	599	42%?

### Cycle training outputs – adults

Total LIP spend on adult cycle training = £30k

Year	Total adults trained
2006/07	154
2007/08	253
2008/09	354

### Synopsis

Camden was one of the first London Boroughs to register for Bikeability and the borough continues to be a flagship Bikeability scheme. Camden trains children in Year 5 and 7 as well as 6 and in 08/09 have also contracted some cycle training work to cyclinginstructor.com. There are circa 18 independent schools in Camden all of which are very reluctant to book cycle training. Camden also runs summer schools, works with community centres and offers after school clubs. Pool bike training is also provided to Camden employees.

### Suggested action plan

- Currently 42% of Year 6 children receive Level 2 training. Increase towards 100% by 2012.
- Assess capacity to meet potentially increasing adult cycle training demand





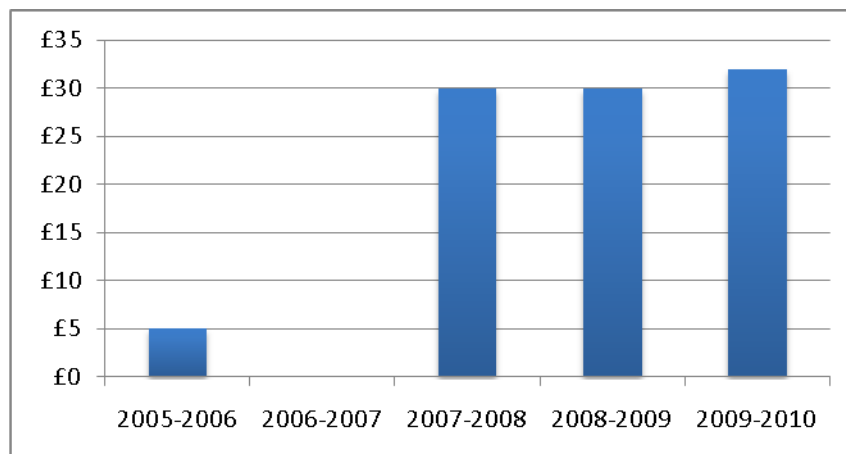
## City of London

**Contact:** Jereme McKaskill T: 020 7582 3535 E: jereme.mckaskill@cityoflondon.gov.uk

**Delivery model:** Adult cycle training is outsourced to CTUK while City of London police offer training to children

**Bikeability:** CTUK courses are registered Bikeability

### LIP funding for cycle training



2005-2006	2006-2007	2007-2008	2008-2009	2009-2010
5	0	30	37	32

### Cycle training outputs – schools

2008/09	Total eligible schools	Total offered	% offered	Total received	% received
Schools & cycle training	5	5	100%	3	60%

## Cycle training outputs

Year	Total children trained	Total children trained to L2	% children trained to L2
2006/07	132	0	0%
2007/08	228	56	25%
2008/09	125	25	20%

## Progress on targets

Year	Total number eligible Yr 6 children	Total number children trained to L2	% eligible Yr 6 children that received L2
2007/08	30	56	187%
2008/09	105	25	24%

## Cycle training outputs – adults

Year	Total adults trained
2006/07	100
2007/08	91
2008/09	186

## Synopsis:

Given the small number of schools in the City of London, the main focus of resource is on adult cycle training. This is offered to any individual who lives or works in the City and is outsourced to CTUK. The Road Safety Team and the City of London Police deliver training to Year 5 and Year 6 students. Holiday training was arranged on Middlesex Street Estate and with Golden Lane Leisure Centre. Bikeability Level 1 and 2 training was done with the City of London Scouts. We engaged with 369 individuals in total through workplace and public events throughout the year working with 11 workplaces.

## Suggested action plan

- City of London and/or City of London police to register their child cycle training with Bikeability.
- Currently 24% of Year 6 children receive Level 2 training. Increase towards 100% by 2012

- Assess capacity to meet potentially increasing adult cycle training demand. CTUK to continue to focus on adult and youth cycle training.
- Further marketing to City businesses planned

## Croydon

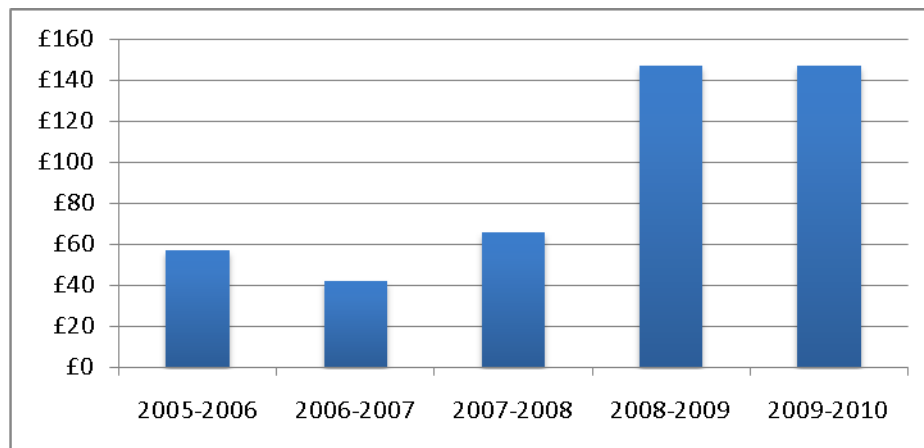


**Contact:** Cliff Olliffe, Road Safety Officer T: 020 8760 5484 E: Clifford.Olliffe@croydon.gov.uk

**Delivery model:** Mixed: Some cycle training is outsourced to cyclinginstructor.com

**Bikeability:** cyclinginstructor.com courses are registered Bikeability

### LIP funding for cycle training



2005-2006	2006-2007	2007-2008	2008-2009	2009-2010
57	42	65.9	147	147

### Cycle training outputs – schools

2008/09	Total eligible schools	Total offered	% offered	Total received	% received
Schools & cycle training	134	134	100%	50	37%

### Cycle training outputs – children

Total LIP spend on child cycle training = £115.7k

Year	Total children trained	Total children trained to L2	% children trained to L2
2006/07	1200	200	17%
2007/08	872	217	25%
2008/09	971	971	100%

### Progress on targets

Year	Total number eligible Yr 6 children	Total number children trained to L2	% eligible Yr 6 children that received L 2
2007/08	4042	217	5%
2008/09	4000	971	24%

### Cycle training outputs – adults

Total LIP spend on adult cycle training = £11.5k

250 adults requested cycle training in 08/09

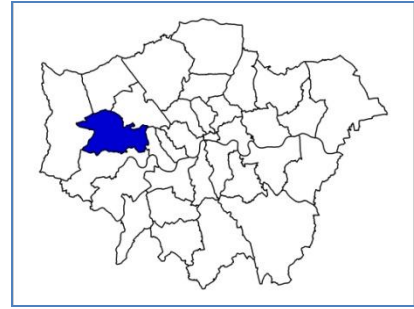
Year	Total adults trained
06/07	25
07/08	83
08/09	197

### Synopsis:

Croydon moved from in house to mixed delivery in 08/09 with [yclinginstructor.com](http://yclinginstructor.com) and deliver excellent Bikeability cycle training. Croydon's special needs training is delivered by Cycling for All and Croydon fund them £20,000, the last year in an agreed 3 year funding program. Cycle day with Police at Harris Academy, South Norwood £1,200. Active Lifestyles £8,200 allocation use LIP support

### Suggested action plan

- Currently 24% Year 6 received Level 2 cycle training. Increase towards 100% by 2012
- Assess capacity for meeting potentially increasing adult cycle training demand



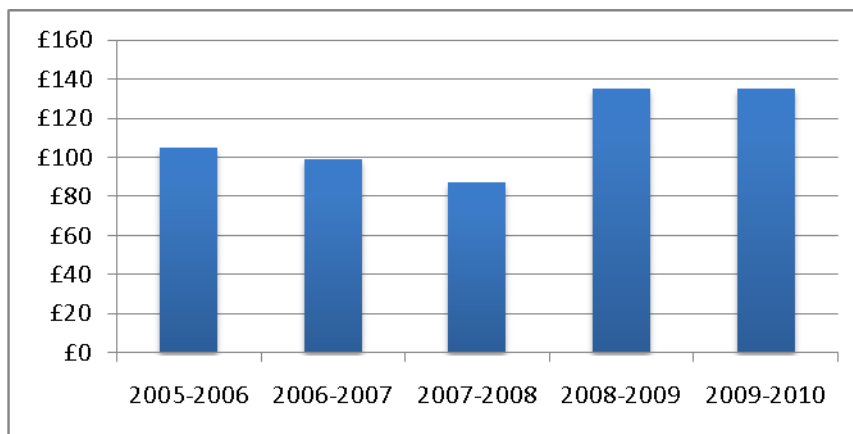
## Ealing

**Contact:** Robert Davis, Cycling Officer T: 020 8825 5771 E: davisr@ealing.gov.uk

**Delivery model:** All training is outsourced to CTUK

**Bikeability:** CTUK courses are registered Bikeability

### LIP funding for cycle training



2005-2006	2006-2007	2007-2008	2008-2009	2009-2010
£105,000	£99,000	£87,000	£135,000	£135,000

### Cycle training outputs – schools

2008/09	Total eligible schools	Total offered	% offered	Total received	% received
Schools & cycle training	100	77	77%	34	34%

### Cycle training outputs – children

Total LIP funding for child cycle training = £94.3k

Year	Total children trained	Total children trained to L2	% children trained to L2
2006/07	528	528	100%
2007/08	552	350	63%
2008/09	755	546	72%

### Progress on targets

Year	Total number eligible Yr 6 children	Total number children trained to L2	% eligible Yr 6 children that received L2
2007/08	3579	350	10%
2008/09	3579	546	15%

### Cycle training outputs – adults

Total LIP funding for adult cycle training = £40.7k

Year	Total adults trained
2006/07	251
2007/08	254
2008/09	618

### Synopsis:

All of Ealing cycle training is outsourced to CTUK who deliver excellent Bikeability cycle training. The reported figure for adult cycle training includes approx 140 contacts in after school drop in sessions – mainly parents and some teachers.

### Suggested action plan

- Currently 15% Year 2 receive Level 2 training. Increase towards 100% by 2012
- Assess capacity for meeting adult cycle training demand



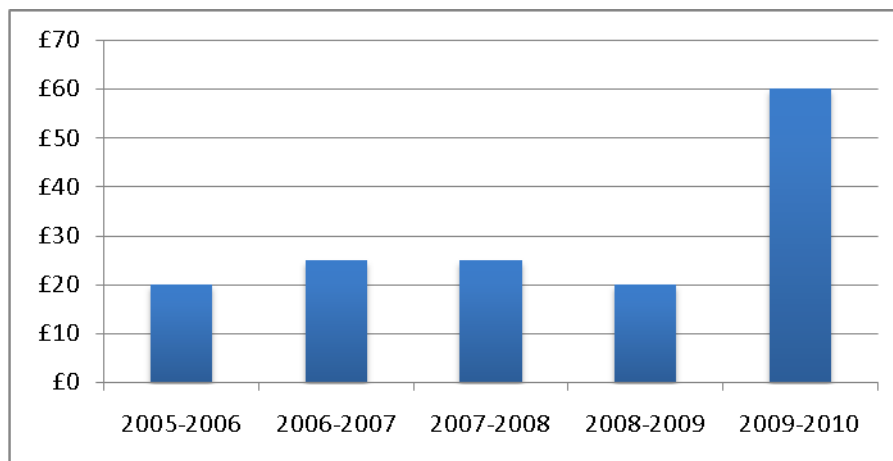
## Enfield

**Contact:** Roger Miles, Road Safety & Sustainable transport manager T: 020 8379 8546 E: roger.miles@enfield.gov.uk

**Delivery model:** All training is delivered in house

**Bikeability:** LB Enfield is a registered Bikeability scheme

### LIP funding for cycle training



2005-2006	2006-2007	2007-2008	2008-2009	2009-2010
£20,000	£25,000	£25,000	£24,000	£60,000

### Cycle training outputs – schools

2008/09	Total eligible schools	Total offered	% offered	Total received	% received
Schools & cycle training	72	60	83%	19	26%



## Cycle training outputs – children

Year	Total children trained	Total children trained to L2	% children trained to L2
2006/07	145	145	100%
2007/08	276	138	50%
2008/09	692	169	24%

## Progress on targets

Year	Total number eligible Yr 6 children	Total number children trained to L2	% eligible Yr 6 children that received L2
2007/08	3811	138	4%
2008/09	3736	169	5%

## Cycle training outputs – adults

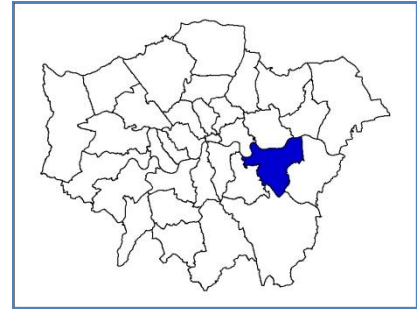
Year	Total adults trained
2006/07	57
2007/08	40
2008/09	21

## Synopsis:

Enfield school of cycling is Bikeability registered and began Bikeability training in 07/08. Providing training for adults to learn to ride from scratch (17 adults and 6 children with special needs). Running a pilot scheme where we are training groups of parents from schools taking part in Level 1/2 Bikeability training.

## Suggested action plan

- Currently 5% of Year 6 receive Level 2 training. Increase towards 100% by 2012
- Assess capacity for meeting adult cycle training demand



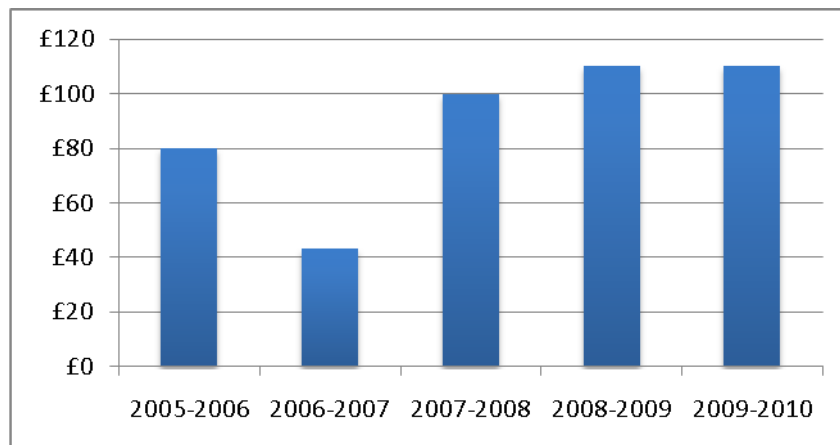
## Greenwich

**Contact:** Michael Attride, Cycle Training Officer T: 020 8921 8074  
E:michael.attride@greenwich.gov.uk

**Delivery model:** All cycle training is delivered in house

**Bikeability:** LB Greenwich is registered Bikeability scheme

### LIP funding for cycle training



2005-2006	2006-2007	2007-2008	2008-2009	2009-2010
£80,000	£43,000	£100,000	£110,000	£110,000

### Cycle training outputs – schools

2008/09	Total eligible schools	Total offered	% offered	Total received	% received
Schools & cycle training	97	97	100%	44	45%

### Cycle training outputs – children

Total LIP funding for child cycle training = £84k

Year	Total children trained	Total children trained to L2	% children trained to L2
2006/07	750	400	53%
2007/08	1093	732	67%
2008/09	1204	827	69%

### Progress on targets

Year	Total number eligible Yr 6 children	Total number children trained to L2	% eligible Yr 6 children that received L2
2007/08	2706	732	27%
2008/09	2200	827	38%

### Cycle training outputs – adults

Total LIP funding for adult cycle training = £26k

Year	Total adults trained
2006/07	15
2007/08	115
2008/09	198

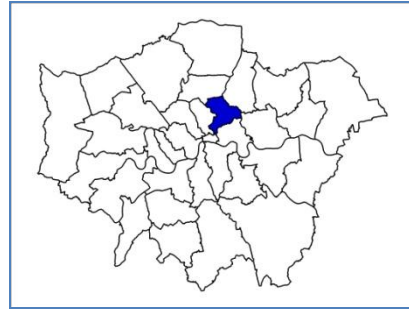
### Synopsis:

Greenwich continues to be a flagship Bikeability scheme. All schools in the borough are offered cycle training and 44 took up the offer in 08/09.

Students from schools that haven't participated in term time programs often take our holiday courses – so more schools than reported are actually benefiting from the service. Easter and summer training courses are also run open to both children and adults. Adult training was also offered to the fire service in support of their cycle to work scheme.

### Suggested action plan

- Currently 38% of Year 6 receive Level 2 training. Increase towards 100% by 2012.
- Assess capacity for meeting adult cycle training demand



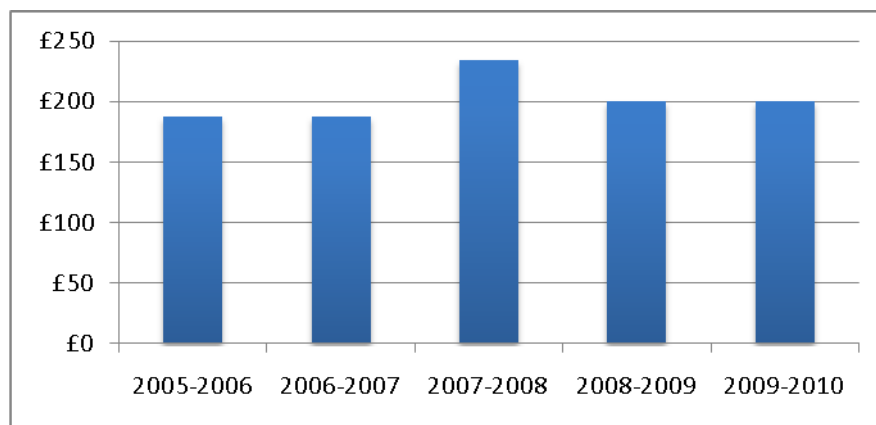
## Hackney

**Contact:** Maryann Allen, Road Safety Team Leader T: 020 8356 8184  
E:maryann.allen@hackney.gov.uk

**Delivery model:** All cycle training is outsourced to STA bikes who have CTUK, London school of cycling and Pedal Power as their subcontractors.

**Bikeability:** STA bikes are in the process of registering for Bikeability

### LIP funding for cycle training



2005-2006	2006-2007	2007-2008	2008-2009	2009-2010
£188,000	£188,000	£234,000	£200,000	£200,000

### Cycle training outputs – schools

2008/09	Total eligible schools	Total offered	% offered	Total received	% received
Schools & cycle training	93	33	36%	33	36%

### Cycle training outputs – children

Total LIP spend on child cycle training = £143.3k

Year	Total children trained	Total children trained to L2	% children trained to L2
2006/07	1083	322	30%
2007/08	1072	600	56%
2008/09	1028	585	57%

### Progress on targets

Year	Total number eligible Yr 6 children	Total number children trained to L2	% eligible Yr 6 children that received L2
2007/08	2158	600	28%
2008/09	2200	585	27%

### Cycle training outputs – adults

Total LIP spend on adult cycle training = £24.6k

Year	Total adults trained
2006/07	372
2007/08	252
2008/09	235

### Synopsis:

Hackney has focused on delivering cycle training to hard to reach groups in their diverse community e.g. through family training. Tyssen Community Primary school in Hackney is individually registered as Bikeability

### Suggested action plan

- LB Hackney to register for Bikeability, so that all materials issued can be Bikeability.
- Currently 27% Year 6 receive Level 2 training. Increase towards 100% by 2012.
- Assess capacity for meeting adult cycle training demand



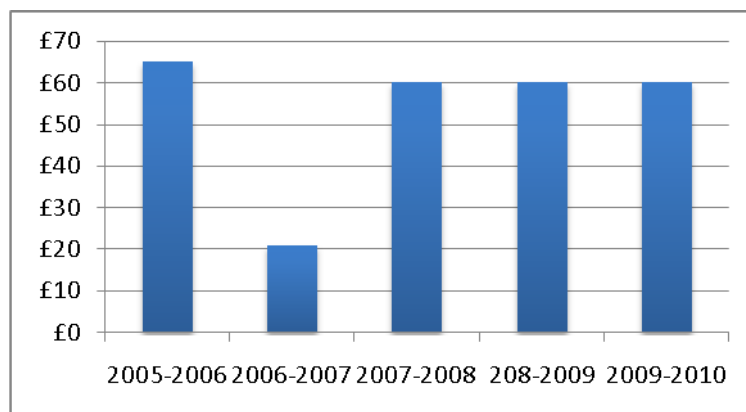
## Hammersmith & Fulham

**Contact:** Simon Franklin, Transportation and Road Safety Manager T: 020 87533353 E: simon.franklin@lbhf.gov.uk

**Delivery model:** Cycle training is outsourced to cyclinginstructor.com and CTUK

**Bikeability:** cyclinginstructor.com and CTUK are both Bikeability

### LIP funding for cycle training



2005-2006	2006-2007	2007-2008	2008-2009	2009-2010
£65,000	£21,000	£60,000	£60,000	£60,000

### Cycle training outputs – schools

2008/09	Total eligible schools	Total offered	% offered	Total received	% received
Schools & cycle training	74	39	53%	18	24%

### Cycle training outputs – children

Total LIP funding for child cycle training = £45k

Year	Total children trained	Total children trained to L2	% children trained to L2
2006/07	200	200	100%
2007/08	374	316	85%
2008/09	206	206	100%

### Progress on targets

Year	Total number eligible Yr 6 children	Total children trained to L2	% eligible Yr 6 children that received L2
2007/08	1246	316	25%
2008/09	1100	206	19%

### Cycle training outputs – adults

Total LIP funding for adult cycle training = £15k

Year	Total adults trained
2006/07	100
2007/08	133
2008/09	150

### Synopsis

School courses are offered at 12 students per course and on a first come first served basis, providing the school has an approved school travel plan. As more and more schools have approved travel plans demand is increasing and they are looking at ways of managing this demand within available resources. They often get larger schools requesting multiple courses or multiple years. Individual training is provided to anyone living, working or studying in the borough. The individual training offer is well advertised on the council website, through leaflets at all civic buildings and at the many community events held within the borough.

### Suggested action plan

- Currently 19% Year 6 receive Level 2 training. Increase towards 100% by 2012
- Assess capacity for meeting adult cycle training demand



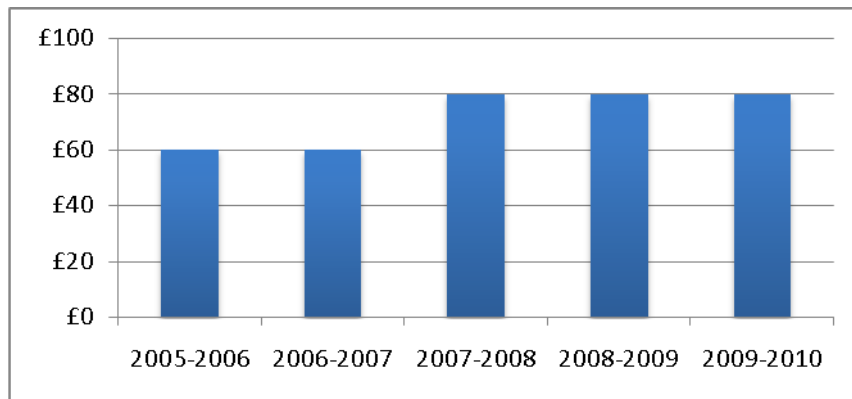
## Haringey

**Contact:** Maurice Richards, Transportation Department T: 020 8489 5575 E: maurice.richards@haringey.gov.uk

**Delivery model:** All cycle training is outsourced to CTUK

**Bikeability:** CTUK courses are registered Bikeability

### LIP funding for cycle training



2005-2006	2006-2007	2007-2008	2008-2009	2009-2010
60	60	80	108	80

### Cycle training outputs – schools

2008/09	Total eligible schools	Total offered	% offered	Total received	% received
Schools & cycle training	78	n/k	n/k	34	44%



### Cycle training outputs – children

Total LIP funding for child training = £86k

Year	Total children trained	Total children trained to L2	% children trained to L2
2006/07	311	311	100%
2007/08	515	398	77%
2008/09	630	536	85%

### Progress on targets

Year	Total number eligible Yr 6 children	Total children trained to L2	% eligible Yr 6 children that received L2
2007/08	2829	398	14%
2008/09	2760	238	9%

### Cycle training outputs – adults

Total LIP funding for adult training = £15.5k

146 adults requested cycle training in 08/09

Year	Total adults trained
2006/07	238
2007/08	138
2008/09	123

### Synopsis:

LB Haringey outsources to CTUK who deliver Bikeability cycle training. Schools are prioritised using school travel plans, while a few schools received additional training as part of the Sustrans Bike it project, namely Chestnuts Primary School, Devonshire Hill Primary School, Highgate School, Seven Sisters Primary School and Weston Park Primary School.

### Suggested action plan

- Currently 9% Year 6 receive Level 2 training. Increase towards 100% by 2012.
- Assess capacity for meeting adult cycle training demand



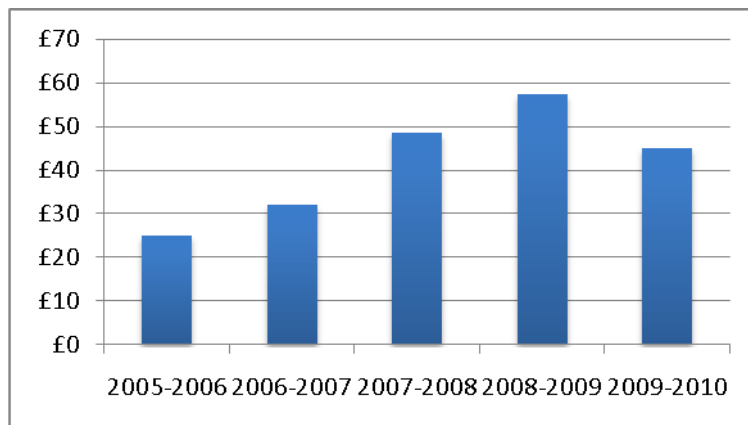
## Harrow

**Contact:** Peter Wenham, Senior Road Safety T: 020 8424 1640 E: peter.wenham@harrow.gov.uk

**Delivery model:** All cycle training is outsourced to Cycle Experience

**Bikeability:** Cycle Experience courses are Bikeability

### LIP funding for cycle training



2005-2006	2006-2007	2007-2008	2008-2009	2009-2010
£25,000	£32,000	£48,500	£88,000	£45,000

### Cycle training outputs – schools

2008/09	Total eligible schools	Total offered	% offered	Total received	% received
Schools & cycle training	84	38	45%	33	39%

### Cycle training outputs – children

Total LIP spend on child cycle training = £70k

Year	Total children trained	Total children trained to L2	% children trained to L2
2006/07	240	200	83%
2007/08	375	260	69%
2008/09	936	700	75%

### Progress on targets

Year	Total number eligible Yr 6 children	Total number children trained to L2	% eligible Yr 6 children that received L2
2007/08	2573	260	10%
2008/09	2750	700	26%

### Cycle training outputs – adults

Total LIP spend on adult cycle training = £18k

Year	Total adults trained
2006/07	0
2007/08	100
2008/09	200

### Synopsis:

Harrow cycle training is delivered by Cycle Experience who Bikeability cycle training. Other areas of work include School Travel Plans, Primary Care Trust, School Try Cycle days, Bike week event and with private schools

### Suggested action plan

- Currently 26% of Year 6 receive Level 2 training. Increase towards 100% by 2012.
- Assess capacity for meeting adult cycle training demand



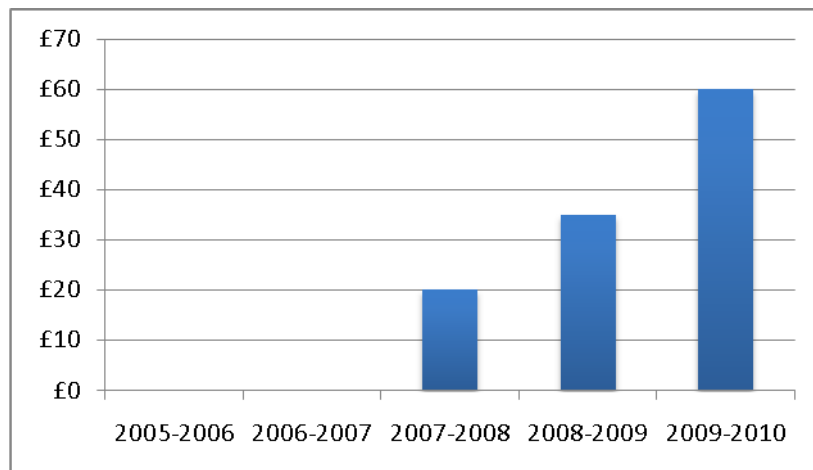
## Havering

**Contact:** Martin Day, School Travel Advisor T: 01708 432 869 E: martin.day@haverling.gov.uk

**Delivery model:** All cycle training is outsourced to Cycle Training East

**Bikeability:** Cycle Training East courses are Bikeability

### LIP funding for cycle training



2005-2006	2006-2007	2007-2008	2008-2009	2009-2010
£0	£0	£20,000	£35,000	£60,000

### Cycle training outputs – schools

2008/09	Total eligible schools	Total offered	% offered	Total received	% received
Schools & cycle training	94	94	100%	33	35%

### Cycle training outputs – children

Year	Total children trained	Total children trained to L2	% children trained to L2
2006/07	36	36	100%
2007/08	580	567	98%
2008/09	709	648	91%

### Progress on targets

Year	Total number eligible Yr 6 children	Total number children trained to L2	% eligible Yr 6 children that received L2
2007/08	2862	603	21%
2008/09	2816	648	23%

### Cycle training outputs – adults

10 adults requested cycle training in 08/09

Year	Total adults trained
2006/07	0
2007/08	0
2008/09	1

### Synopsis

The outsourcing of Havering's cycle training to Cycle Training East is managed by the School Travel advisors and has been developed over the past few years from no previous cycle training delivery in the borough. Teachers at schools in the borough were offered training this year, and there has been small take up. Havering now offer free or subsidised adult cycle training to residents in the borough as of April 2009.

### Suggested action plan

- Currently 23% Year 6 receive Level 2 training. Increase towards 100% by 2012.
- Assess capacity for meeting potentially increasing adult cycle training demand



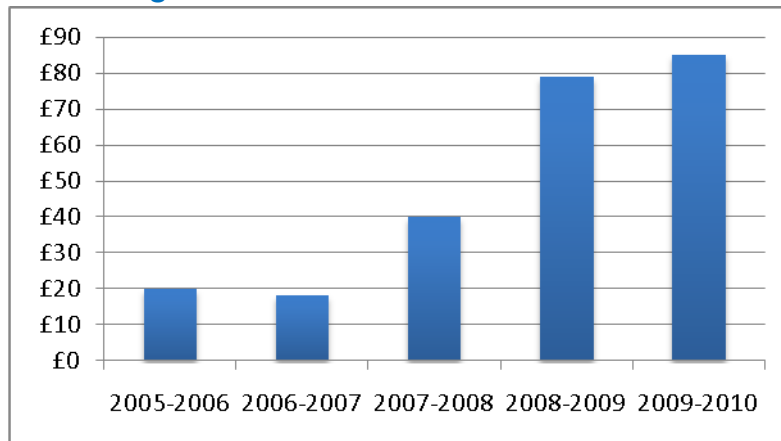
## Hillingdon

**Contact:** Ken Smithson, Principle Road Safety Officer T: 01895 556 336 E: ksmithson@hillington.gov.uk and Carlo Galluzzo, Road Safety Officer T: 01895 250 950 E: cgalluzzo@hillington.gov.uk

**Delivery model:** All cycle training is delivered in house

**Bikeability:** LB Hillingdon is a registered Bikeability scheme

### LIP funding for cycle training



2005-2006	2006-2007	2007-2008	2008-2009	2009-2010
£20,000	£18,000	£40,000	£55,000	£85,000

### Cycle training outputs – schools

08/09	Total eligible schools	Total offered	% offered	Total received	% received
Schools & cycle training	73	55	75%	27	37%

## Cycle training outputs – children

Year	Total children trained	Total children trained to Level 2	% children trained to Level 2
2006/07	600	350	58%
2007/08	1500	700	47%
2008/09	1700	500	29%

## Progress on targets

Year	Total number eligible Yr 6 children	Total number children trained to L2	% eligible Yr 6 children that received L2
2007/08	3143	700	22%
2008/09	3000	500	17%

## Cycle training outputs – adults

Year	Total adults trained
2006/07	0
2007/08	0
2008/09	0

## Synopsis

Hillingdon is Bikeability registered and is a very highly skilled professional team delivering very high quality training. Hillingdon began offering Level 3 training as of 1<sup>st</sup> Jan 09 and began their adult cycle training programme in April 09.

## Suggested action plan

- Currently 17% Year 6 receive Level 2 training. Increase towards 100% by 2012
- Assess capacity for meeting potentially increasing adult cycle training demand



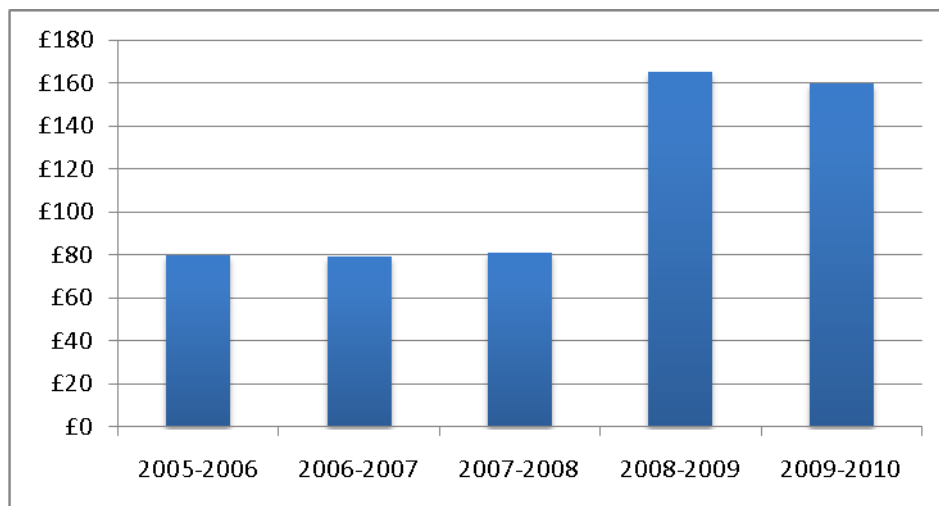
## Hounslow

**Contact:** Susan Guichard, Cycle Training coordinator T: 020 8583 5039 E: Susan.Guichard@hounslow.gov.uk

**Delivery model:** Cycle training outsourced to Cycling Tuition and Cycle Experience

**Bikeability:** Cycle Experience offer Bikeability

### LIP funding for cycle training



2005-2006	2006-2007	2007-2008	2008-2009	2009-2010
£80,000	£79,000	£81,100	£165,000	£160,000

### Cycle training outputs – schools

2008/09	Total eligible schools	Total offered	% offered	Total received	% received
Schools & cycle training	68	58	85%	48	71%



## Cycle training outputs

Total LIP spend on child cycle training = £135k

Year	Total children trained	Total children trained to L2	% children trained to L2
2006/07	1700	450	26%
2007/08	1581	402	25%
2008/09	1796	736	41%

## Progress on targets

Year	Total number eligible Yr 6 children	Total number children trained to L2	% eligible Yr 6 children that received L2
2007/08	2651	402	15%
2008/09	2500	736	29%

## Cycle training outputs – adults

Total LIP spend on adult cycle training = £35k

80 adults requested cycle training in 08/09

Year	Total adults trained
2006/07	45
2007/08	35
2008/09	63

## Synopsis

The provision of cycle training in the Borough is very well organised and there is a clear and effective strategy with a service clearly focused on increasing cycling to school. Hounslow's introduction of bike clubs as part of the Extended Schools program have been a great success and their Cyclicious program aimed at girl's schools has contributed to the overall success of Hounslow's Level 2 and 3 cycle training.

## Suggested action plan

- LB Hounslow and/or Cycle Tuition to register for Bikeability so all materials issued can be Bikeability
- Currently 29% Year 6 receive Level 2 training. Increase towards 100% by 2012
- Assess capacity to meet demand for adult cycle training



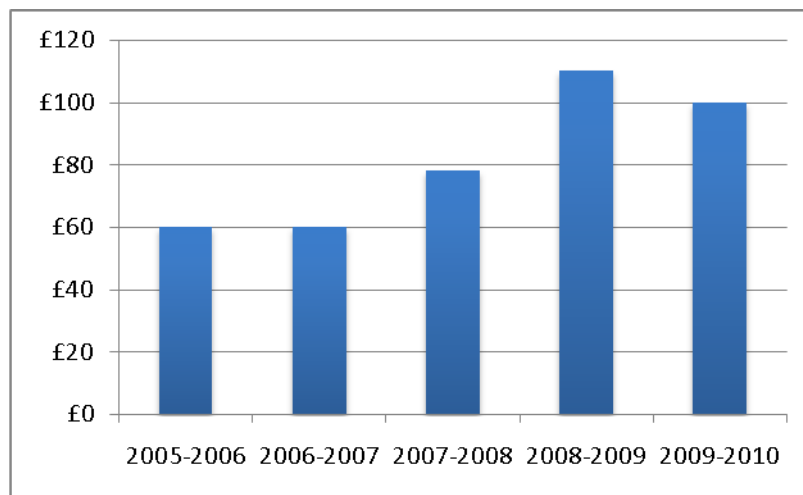
## Islington

**Contact:** William Pountney, Cycling Officer T: 020 7527 4082 E:William.pountney@islington.gov.uk

**Delivery model:** Cycle training is predominantly delivered in house, although some short term courses are outsourced to Go-by-Bike and Bikeworks

**Bikeability:** Islington offers Bikeability

### LIP funding for cycle training



2005-2006	2006-2007	2007-2008	2008-2009	2009-2010
£60,000	£60,000	£78,000	£110,000	£100,000

### Cycle training outputs – schools

2008/09	Total eligible schools	Total offered	% offered	Total received	% received
Schools & cycle training	55	50	91%	45	82%

### Cycle training outputs – children

Total LIP spend on child cycle training = £85k

Year	Total children trained	Total children trained to L2	% children trained to L2
2006/07	350	200	57%
2007/08	826	292	35%
2008/09	2076	854	41%

### Progress on targets

Year	Total number eligible Yr 6 children	Total number children trained to L2	% eligible Yr 6 children that received L2
2007/08	1902	292	15%
2008/09	1902	854	45%

### Cycle training outputs – adults

Total LIP spend on adult cycle training = £25k

260 adults requested cycle training in 08/09

Year	Total adults trained
2006/07	85
2007/08	120
2008/09	233

### Synopsis

Islington's scheme is Bikeability and delivers a very high standard of instruction. They also have an excellent strategy for ongoing delivery of cycle training.

### Suggested action plan

- Currently 45% Year 6 receive Level 2 training. Increase towards 100% by 2012
- Assess capacity for increasing adult cycle training demand



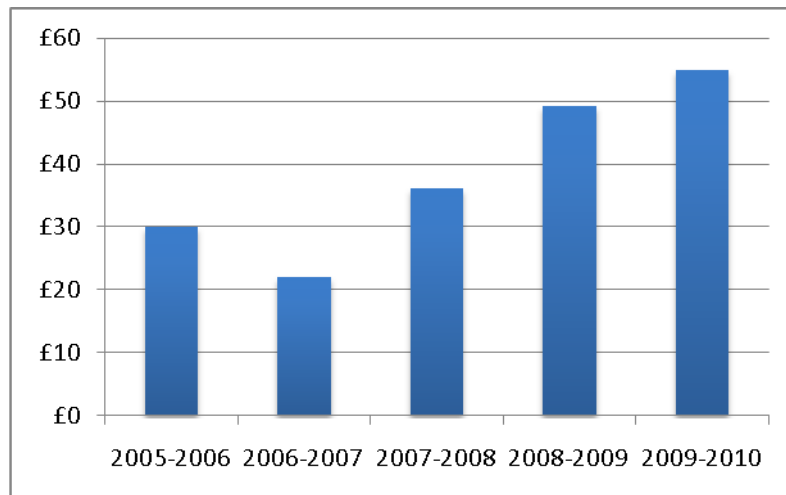
## Kensington & Chelsea

**Contact:** Neil Simpson, Road Safety Officer T: 020 7361 3628 E: neil.simpson@rbkc.gov.uk

**Delivery model:** Cycle training is outsourced to Technicolour Tyres

**Bikeability:** In progress

### LIP funding for cycle training



2005-2006	2006-2007	2007-2008	2008-2009	2009-2010
£30,000	£22,000	£36,100	48.8	£55,000

### Cycle training outputs – schools

2008/09	Total eligible schools	Total offered	% offered	Total received	% received
Schools & cycle training	66	66	100%	25	38%

### Cycle training outputs – children

Total LIP spend on child cycle training = £46k

Year	Total children trained	Total children trained to L2	% children trained to L2
2006/07	200	200	100%
2007/08	666	276	41%
2008/09	759	357	47%

### Progress on targets

Year	Total number eligible Yr 6 children	Total number children trained to L2	% eligible Yr 6 children that received L2
2007/08	1521	276	18%
2008/09	1160	357	31%

### Cycle training outputs – adults

Total LIP spend on adult cycle training = £2.8k

60 adults requested cycle training in 08/09

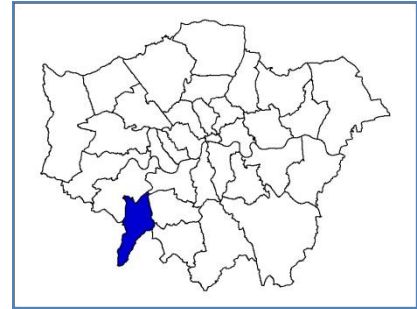
Year	Total adults trained
2006/07	36
2007/08	30
2008/09	50

### Synopsis

Kensington and Chelsea's scheme is based on a very good long term relationship between the Borough and the outsourced provider Technicolour tyres. The strategy for cycle training is evolving between them but a strong clear principle for the training is that the young people get as much cycling experience as possible and that the course is enjoyable and empowering. K&C are currently preparing to register with Bikeability. They provide Level I courses in summer activity programme and Level I introductions to Year 3 and 4 pupils.

### Suggested action plan

- Kensington and Chelsea and Technicolour Tyres to register for Bikeability so all materials issued can be Bikeability.
- Currently 31% of Year 6 receive Level 2 training. Increase towards 100% by 2012
- Assess capacity for meeting adult cycle training demand



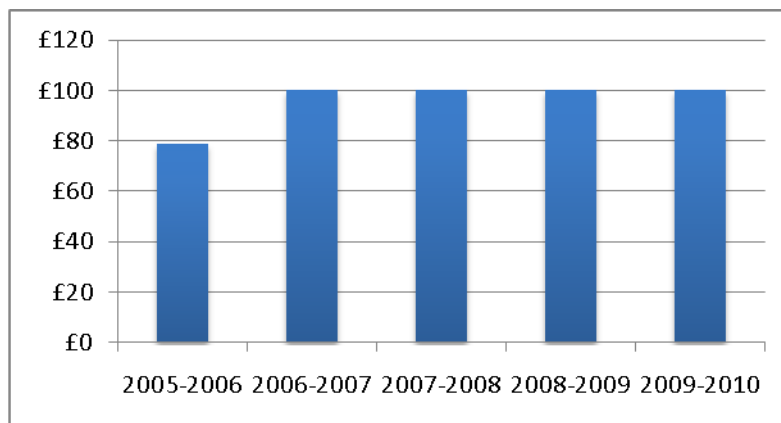
## Kingston upon Thames

**Contact:** Eric Chasseray, Road Safety & Travel awareness T: 020 8547 5923 E: eric.chasseray@rbk.kingston.gov.uk

**Delivery model:** All cycle training is delivered in house

**Bikeability:** RB Kingston is a registered Bikeability scheme

### LIP funding for cycle training



2005-2006	2006-2007	2007-2008	2008-2009	2009-2010
79	100	100	101.5	100

### Cycle training outputs – schools

2008/09	Total eligible schools	Total offered	% offered	Total received	% received
Schools & cycle training	63	49	77%	39	62%

### Cycle training outputs – children

Total LIP spend on child cycle training = £96.4k

Year	Total children trained	Total children trained to L2	% children trained to L2
2006/07	1249	1135	91%
2007/08	1216	1115	92%
2008/09	1262	1262	100%

### Progress on targets

Year	Total number eligible Yr 6 children	Total number children trained to L2	% eligible Yr 6 children that received L2
2007/08	1521	1115	73%
2008/09	1500	1262	84%

### Cycle training outputs – adults

Total LIP spend on adult cycle training = £5.1k

Year	Total adults trained
2006/07	90
2007/08	199
2008/09	121

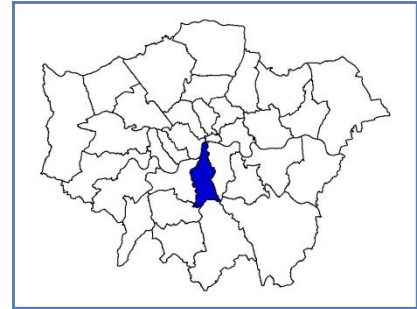
### Synopsis:

Kingston is a flagship Bikeability borough and was the first London borough Instructor Training Provider (ITP) in London. All Kingston's primary and junior state schools are engaged in their cycle training programme. They are also providing the following: Free maintenance courses: 11 courses, 102 participants. They have delivered Level 3 training to three Secondary Schools, 28 participants (included in totals). Social rides for Women every month, 60 participants. Staff cycle training courses in 2 schools and 1 workplace. "Recycling Bicycles to the Community" in partnership with the Police and the Kingston Refugee Action, 12 participants. As an ITP they have trained 39 National Standards instructors in London.

### Suggested action plan

- Currently 84% Year 6 receive Level 2 training. Increase towards 100% by 2012
- Assess capacity for meeting adult cycle training demand





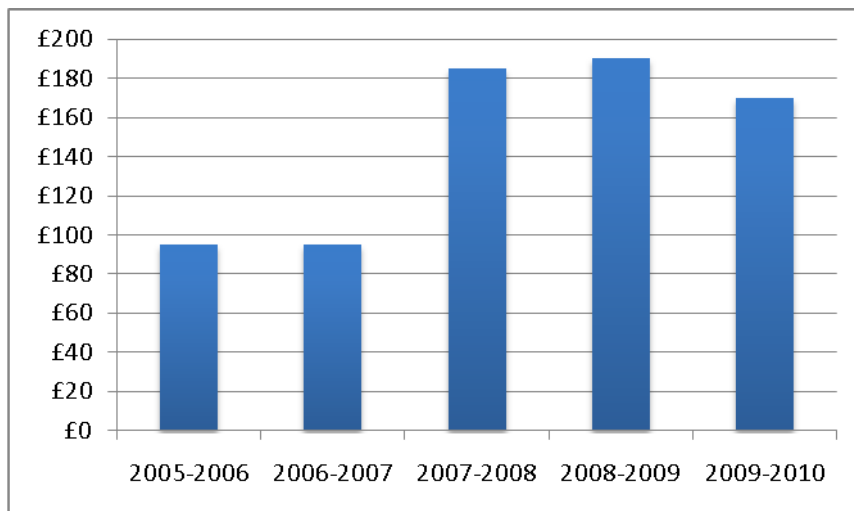
## Lambeth

**Contact:** Richard Ambler, Cycling Projects Manager T: 020 7926 1240 E: rambler@lambeth.gov.uk

**Delivery model:** All cycle training is outsourced to CTUK

**Bikeability:** CTUK courses are Bikeability

### LIP funding for cycle training



2005-2006	2006-2007	2007-2008	2008-2009	2009-2010
95	95	185.2	139.2	170

### Cycle training outputs – schools

2008/09	Total eligible schools	Total offered	% offered	Total received	% received
Schools & cycle training	99	68	69%	34	34%

### Cycle training outputs – children

Total LIP spend on child cycle training = £139.2k

Year	Total children trained	Total children trained to L2	% children trained to L2
2006/07	468	432	92%
2007/08	382	349	91%
2008/09	1068	624	58%

### Progress on targets

Year	Total number eligible Yr 6 children	Total number children trained to L2	% eligible Yr 6 children that received L2
2007/08	2498	349	14%
2008/09	2498	624	25%

### Cycle training outputs – adults

Total LIP spend on adult cycle training = £27.6k

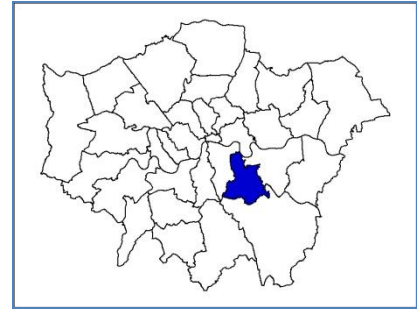
Year	Total adults trained
2006/07	328
2007/08	272
2008/09	469

### Synopsis:

Lambeth cycle training is outsourced to CTUK who deliver Bikeability training. Lambeth has also piloted a number of approaches to offering training such as after-school sessions involving parents and is currently delivering a project which provides cycle training to HGV drivers. In 2008 Lambeth conducted research on the impacts of cycle training. They also offer Bikeability Level 1 training with Larkhall Centre for Autism. Bikeability Level 2 training with the Clapham Park Project, Adult cycle training is offered to Lambeth Parking Wardens and Veolia (dustcart) drivers, Maintenance training with Brixton Bicycle Art.

### Suggested action plan

- Currently 25% Year 6 receive Level 2 training. Increase towards 100% by 2012
- Assess capacity for meeting adult cycle training demand



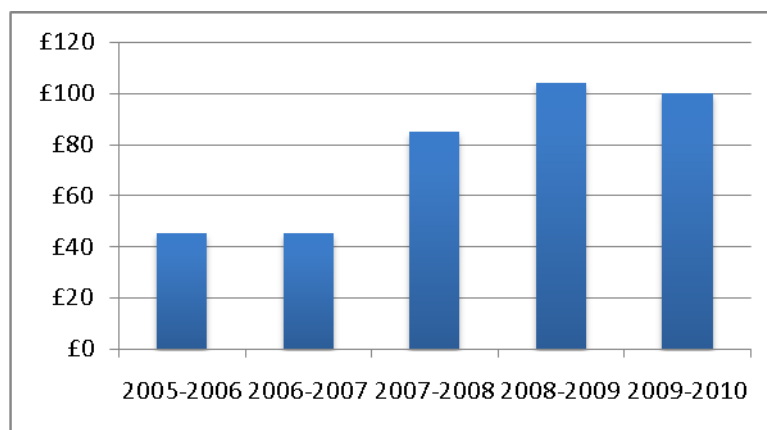
## Lewisham

**Contact:** Liz Brooker, Road Safety Manager T: 020 8314 2254 E: [liz.brooker@lewisham.gov.uk](mailto:liz.brooker@lewisham.gov.uk)

**Delivery model:** Some cycle training is delivered in house and some is outsourced to cycling instructor.com

**Bikeability:** Cyclinginstructor.com courses are Bikeability, and LB Lewisham is a registered Bikeability scheme

### LIP funding for cycle training



2005-2006	2006-2007	2007-2008	2008-2009	2009-2010
45	45	84.8	103.3	100

### Cycle training outputs – schools

08/09	Total number schools	Total offered	% offered	Total received	% received
Schools & cycle training	65	65	100%	30	46%

### Cycle training outputs – children

Total LIP spend on child cycle training = £78.1k

Year	Total children trained	Total children trained to L2	% children trained to L2
2006/07	350	100	29%
2007/08	837	667	80%
2008/09	546	522	96%

### Progress on targets

Year	Total number eligible Yr 6 children	Total children trained to L2	% eligible Yr 6 children that received L2
2007/08	3025	837	28%
2008/09	3189	522	16%

### Cycle training outputs – adults

Total LIP spend on adult cycle training = £25.2k

Year	Total adults trained
2006/07	100
2007/08	306
2008/09	389

### Synopsis:

Lewisham in house courses are Bikeability as are their courses outsourced to cyclinginstructor.com  
John Ball primary school in Lewisham is also registered separately to deliver Bikeability

School and holiday training courses are offered; Cycle to work initiative such as London to Brighton ride for 75+ staff; Group cycle rides for confidence building and buddying, School travel plans, special events, Blackheath Bike and Kite event.

### Suggested action plan

- Currently 16% of Year 6 receive Level 2 training. Increase towards 100% by 2012
- Assess capacity for meeting adult cycle training demand



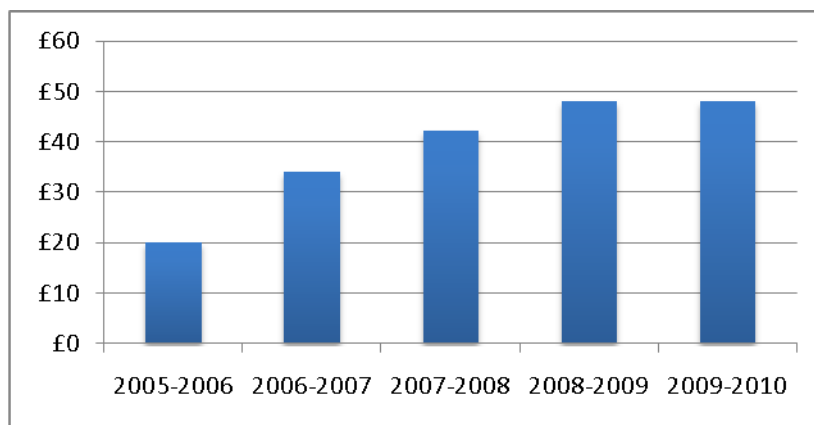
## Merton

**Contact:** Keith Filby, Road Safety Officer T: 020 8545 3206 E: keith.filby@merton.gov.uk

**Delivery model:** All cycle training is delivered in house by the Road Safety team

**Bikeability:** Merton offers Bikeability courses

### LIP funding for cycle training



2005/06	2006/07	2007/08	2008/09	2009/10
20	34	42.2	55	55

### Cycle training outputs – schools

2008/09	Total number schools	Total offered	% offered	Total received	% received
Schools & cycle training	43	43	100%	35	81%

### Cycle training outputs – children

Total LIP spend on child cycle training = £47k

Year	Total children trained	Total children trained to L2	% children trained to L2
2006/07	666	414	62%
2007/08	552	326	59%
2008/09	1056	572	54%

### Progress on targets

Year	Total number eligible Yr 6 children	Total children trained to L2	% eligible Yr 6 children that received L2
2007/08	1830	326	18%
2008/09	1762	572	33%

### Cycle training outputs – adults

Total LIP spend on adult cycle training = £7k

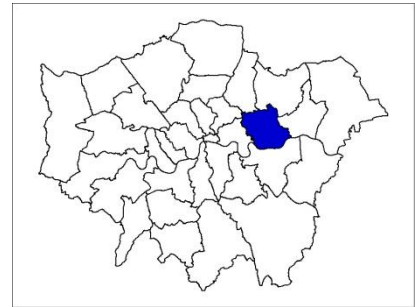
Year	Total adults trained
2006/07	70
2007/08	47
2008/09	56

### Synopsis

Provided cycle maintenance days, training for special needs children, training for community wardens, plus public cycle training schemes for children during Easter and summer holidays. Merton supports those requiring special needs cycle training by referring them to the 'Cycling for All' scheme as individual cycles can cost £4-5k each.

### Suggested action plan

- Currently 33% of Year 6 receive Level 2 training. Increase towards 100% by 2012
- Assess capacity for meeting adult cycle training demand



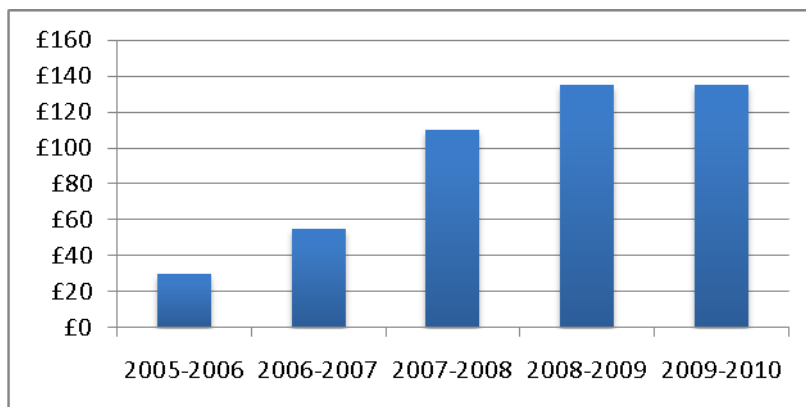
## Newham

**Contact:** Chris Heaton T: 020 8430 2754 E:chris.heaton@newham.gov.uk

**Delivery model:** Some cycle training is delivered in house and some outsourced to Bikeworks

**Bikeability:** Bikeworks courses are Bikeability

### LIP funding for cycle training



2005-2006	2006-2007	2007-2008	2008-2009	2009-2010
30	55	110	135	135

### Cycle training outputs – schools

2008/09	Total number schools	Total offered	% offered	Total received	% received
Schools & cycle training	100	85	85%	26	26%

### Cycle training outputs – children

Total LIP spend on child cycle training = £80k

Year	Total children trained	Total children trained to L2	% children trained to L2
2006/07	251	160	64%
2007/08	352	218	62%
2008/09	760	500	66%

### Progress on targets

Year	Total number eligible Yr 6 children	Total children trained to L2	% eligible Yr 6 children that received L2
2007/08	3851	218	6%
2008/09	4000	500	13%

### Cycle training outputs – adults

Total LIP spend on adult cycle training = £10k

270 adults requested cycle training in 08/09

Year	Total adults trained
2006/07	100
2007/08	115
2008/09	250

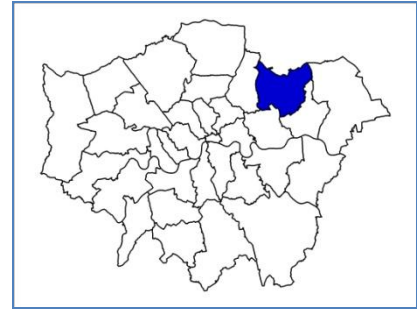
### Synopsis:

Newham cycle training is outsourced to Bikeworks delivering Bikeability cycle training. Chris Heaton is in the process of developing a much wider range of cycling activities to support the training done by the Road Safety Team. Cycling is promoted with physical activity team, school travel, parks and events, local traders and is closely tied to the local LCC branch Newham Cyclists. Newham also hope to have a dedicated cycling (and maybe walking) centre by the end of the summer.

### Suggested action plan

- Currently 13% Year 6 receive Level 2 training. Increase towards 100% by 2012
- Assess capacity for meeting adult cycle training demand





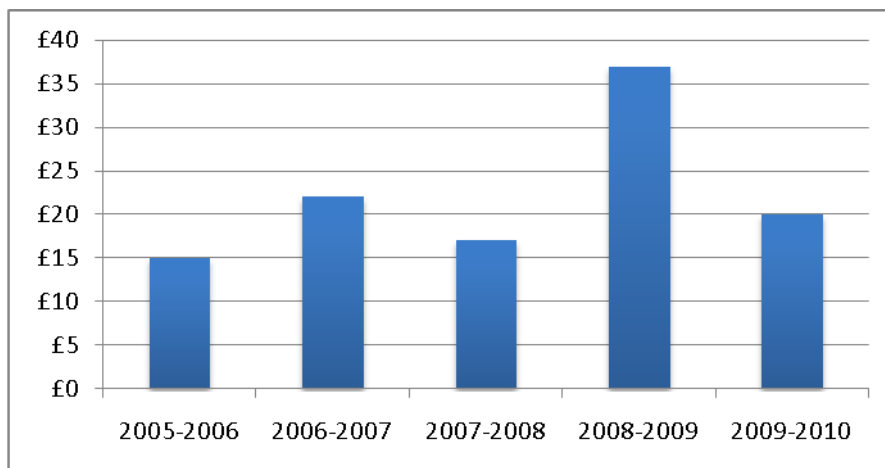
## Redbridge

**Contact:** Jane Arthur, Cycle Training Officer T: 020 8108 3577 E: jane.arthur@redbridge.gov.uk

**Delivery model:** Schools receive cycle training through outsourcing to CTUK, while holiday courses are delivered by the Borough road safety team

**Bikeability:** CTUK courses are Bikeability

### LIP funding for cycle training



2005-2006	2006-2007	2007-2008	2008-2009	2009-2010
15	22	17	35.2	20

### Cycle training outputs – schools

2008/09	Total number schools	Total offered	% offered	Total received	% received
Schools & cycle training	83	60	72%	11	13%

### Cycle training outputs – children

Total LIP spend on child cycle training = £27.1k

Year	Total children trained	Total children trained to L2	% children trained to L2
2006/07	250	0	0
2007/08	327	128	39%
2008/09	336	204	61%

### Progress on targets

Year	Total number eligible Yr 6 children	Total children trained to L2	% eligible Yr 6 children that received L2
2007/08	3388	128	4%
2008/09	3388	204	6%

### Cycle training outputs – adults

Total Lip spend on adult cycle training = £8.1k

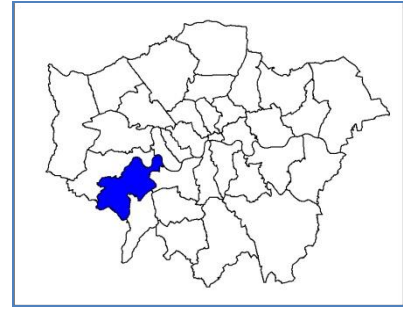
Year	Total adults trained
2006/07	0
2007/08	56
2008/09	75

### Synopsis

Redbridge cycle training strategy is very sound and run by a well bonded team. CTUK train during term time, while Redbridge train during school holidays along with CTUK. The borough road safety team train mostly year 6 children and only take them up to level 2 off road. We do take the children on the road but only as a snaking exercise and as an introduction of what it is like to be in traffic. We encourage the children and parents to get further training through their school with CTUK.

### Suggested action plan

- Redbridge to register for Bikeability so materials issued can be Bikeability by end 08/09.
- Currently 6% of Year 6 receive Level 2 training. Increase towards 100% by 2012
- Assess capacity for meeting adult cycle training demand



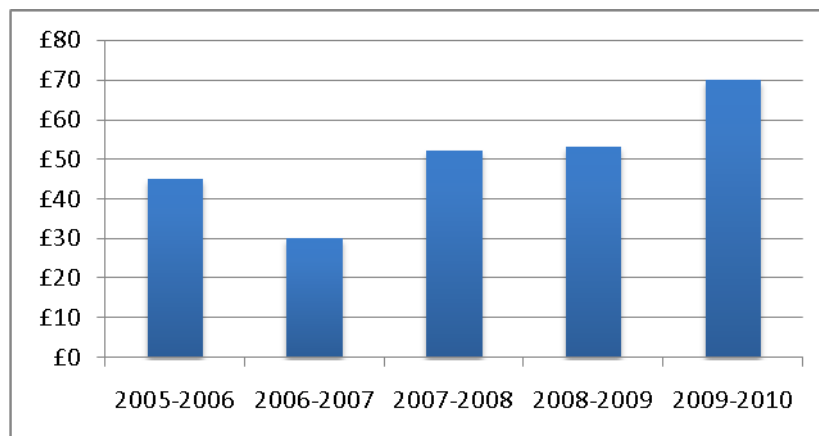
## Richmond upon Thames

**Contact:** Cameron Stewart, Safety education department T: 020 8487 5133 E: Cameron.stewart@richmond.gov.uk

**Delivery model:** All cycle training is delivered in house

**Bikeability:** LB Richmond is in process of registering as a Bikeability scheme

### LIP funding for cycle training



2005-2006	2006-2007	2007-2008	2008-2009	2009-2010
£45,000	£30,000	£52,200	£53,000	£70,000

Note: Additional funding for cycle training is supplied directly by the borough in addition to TfL LIP funding.

### Cycle training outputs – schools

2008/09	Total number schools	Total offered	% offered	Total received	% received
Schools & cycle training	54	49	91%	43	80%

### Cycle training outputs – children

Total LIP spend on child cycle training = £51k

Year	Total children trained	Total children trained to L2	% children trained to L2
2006/07	1750	1750	100%
2007/08	3605	1756	49%
2008/09	4014	2116	53%

### Progress on targets

Year	Total number eligible Yr 6 children	Total number children trained to L2	% eligible Yr 6 children that received L2
2007/08	1929	1756	91%
2008/09	2267	2116	93%

### Cycle training outputs – adults

Total LIP spend on adult cycle training = £2k

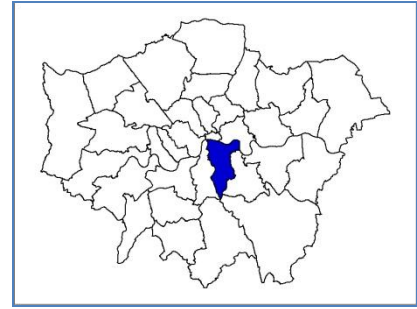
Year	Total adults trained
2006/07	70
2007/08	60
2008/09	60

### Synopsis

Richmond is offering a very high standard of cycle training to a very high proportion of eligible Year 6 children in the borough. Richmond's exemplary numbers are a model not only in London but also nationally. Richmond also offer half term and summer training courses and are now receiving further funding through the TfL funded Smarter Travel Richmond programme.

### Suggested action plan

- Richmond to register for Bikeability so all materials issued can be Bikeability.
- Currently 93% of Year 6 receive Level 2 cycle training. Increase provision beyond primary to secondary schools
- Assess capacity to meet potentially increasing demand for adult cycle training.



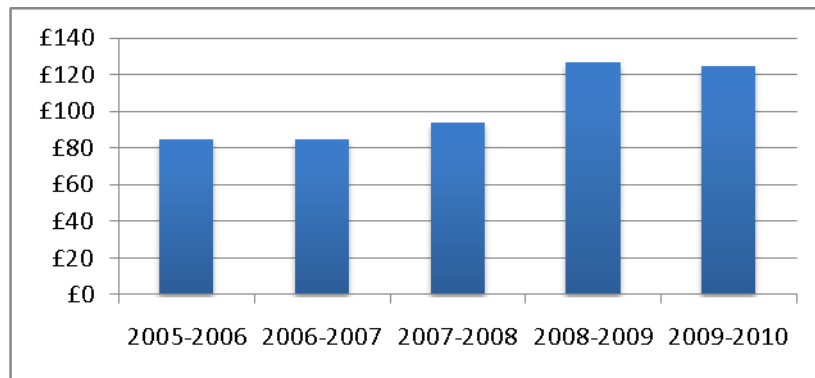
## Southwark

**Contact:** Gareth Tuffery, Cycle Training Officer T: 020 7525 5566 E: Gareth.tuffery@southwark.gov.uk

**Delivery model:** All cycle training is outsourced to cyclinginstructor.com

**Bikeability:** Cyclinginstructor.com courses are registered Bikeability

### LIP funding for cycle training



2005-2006	2006-2007	2007-2008	2008-2009	2009-2010
£85,000	£85,000	£93,800	£127,000	£125,000

### Cycle training outputs – schools

2008/09	Total number schools	Total offered	% offered	Total received	% received
Schools & cycle training	70	70	100%	40	57%

### Cycle training outputs – children

Year	Total children trained	Total children trained to L2	% children trained to L2
2006/07	412	100	24%
2007/08	765	765	100%
2008/09	544	500	92%

### Progress on targets

Year	Total number eligible Yr 6 children	Total number children trained to L2	% eligible Yr 6 children that received L2
2007/08	2966	765	26%
2008/09	2966	500	17%

### Cycle training outputs – adults

680 adults requested cycle training in 08/09

Year	Total adults trained
2006/07	100
2007/08	458
2008/09	549

### Synopsis

Southwark cycle training is outsourced to cyclinginstructor.com who Bikeability cycle training. 51 courses carried out over 08/09 some multiple courses at the same school. Additional half term and holiday courses are also offered. All adults are offered one to one sessions and the high numbers trained are attributed to the ease use of the online booking system for adult one to one training.

### Suggested action plan

- Currently 17% of Year 6 receive Level 2 training. Increase towards 100% by 2012.
- Assess capacity to meet increasing demand for adult cycle training

## Sutton

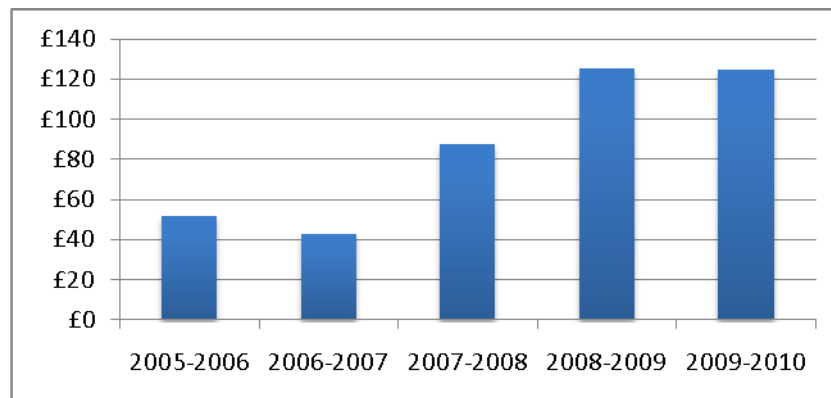


**Contact:** Steve Wright, Chief Cycling Officer T: 020 87706231 E: [stephen.wright@sutton.gov.uk](mailto:stephen.wright@sutton.gov.uk)

**Delivery model:** All cycle training is delivered in house

**Bikeability:** Sutton scheme is Bikeability

### LIP funding for cycle training



2005-2006	2006-2007	2007-2008	2008-2009	2009-2010
£52,000	£43,000	£87,500	£117,000	£125,000

### Cycle training outputs – schools

2008/09	Total number schools	Total offered	% offered	Total received	% received
Schools & cycle training	51	42	82%	31	61%

### Cycle training outputs – children

Total LIP spend on child cycle training = £113k

Year	Total children trained	Total children trained to L2	% children trained to L2
2006/07	1142	1126	99%
2007/08	1757	1152	66%
2008/09	1495	1215	81%

### Progress on targets

Year	Total number eligible Yr 6 children	Total number children trained to L2	% eligible Yr 6 children that received L2
2007/08	2966	1152	39%
2008/09	2000	1215	61%

### Cycle training outputs – adults

Total LIP spend on adult cycle training = £4.7k

39 adults requested cycle training in 2008/09

Year	Total adults trained
2006/07	9
2007/08	14
2008/09	27

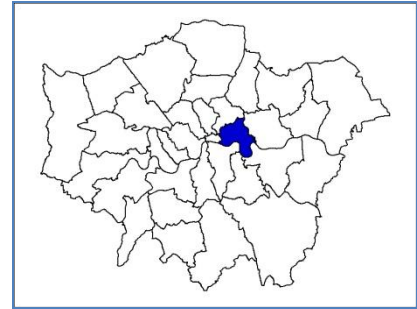
### Synopsis

Sutton's cycle training is Bikeability and they offer standard half term and holiday training, Cycle Road shows, partnership working with British Cycling, Sutton Primary Schools Cycling Championships, adult and family training days with the PCT. Local events and fetes.

### Suggested action plan

- Currently 61% Year 6 receive Level 2 training. Increase towards 100% by 2012.
- Assess capacity to meet potentially increasing demand for adult cycle training





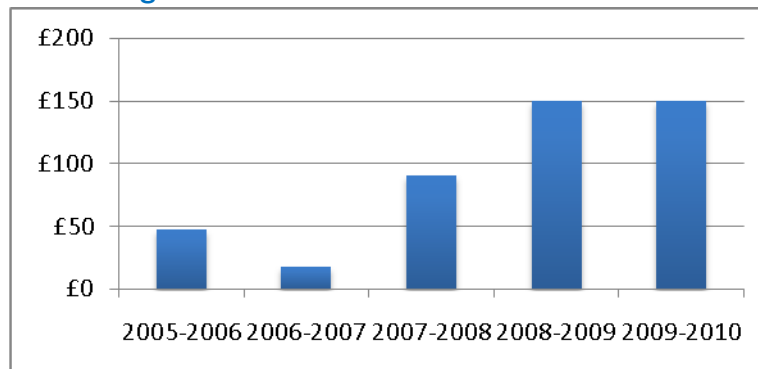
## Tower Hamlets

**Contact:** Ashraf Ali, Cycling Officer T: 020 7364 6793 E: ashraf.ali@towerhamlets.gov.uk

**Delivery model:** Cycle training is outsourced to a number of local providers including TH Ensign Youth, Mayers Partnership and Bikeworks

**Bikeability:** Bikeworks courses are registered Bikeability

### LIP funding for cycle training



2005-2006	2006-2007	2007-2008	2008-2009	2009-2010
47	18	90	150	150

### Cycle training outputs – schools

2008/09	Total number schools	Total offered	% offered	Total received	% received
Schools & cycle training	112	112	100%	34	30%

### Cycle training outputs – children

Total LIP spend on child cycle training = £140k

Year	Total children trained	Total children trained to L2	% children trained to L2
2006/07	1500	120	8%
2007/08	3283	639	19%
2008/09	4000	1622	41%

### Progress on targets

Year	Total number eligible Yr 6 children	Total number children trained to L2	% eligible Yr 6 children that received L2
2007/08	2873	639	22%
2008/09	5500	1622	30%

### Cycle training outputs – adults

Total LIP spend on adult cycle training = £10k

Year	Total adults trained
2006/07	0
2007/08	131
2008/09	226

### Synopsis

Tower Hamlets have a strategy to develop local expertise through community groups and social enterprises and all instructors are National Standards. Their strategy develops local skills and social cohesion and delivers high quality training that is accessible and relevant to the pupils. TH employs 3 separate cycle training providers. Ensign is a youth group that so far employs 4 NS Instructors. Maze Partnership is a local small business engaged in cycle training through joint partnership at a event held with a Bangladeshi youth movement and has 2 instructors at present. Cycle training is a small strand of their overall work programme. Bikeworks – a Bikeability registered independent cycle training provider. Many of the courses provide bikes for trainees to ensure a high level of take up.

### Suggested action plan

- Ensign/Maze and/or TH to register for Bikeability so all courses can offer Bikeability materials
- Currently 30% Year 6 receive Level 2 training. Increase towards 100% by 2012.
- Assess capacity to meet demand for adult cycle training



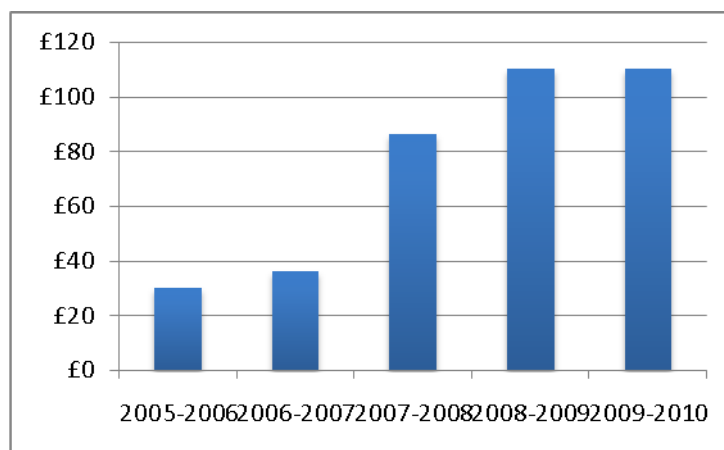
## Waltham Forest

**Contact:** Linda Webb, Senior Transport Planner T: 020 8496 6781 E: linda.webb@walthamforest.gov.uk

**Delivery model:** Most cycle training for children is outsourced to Bikeworks, and all cycle training for over 16s is outsourced to CTUK

**Bikeability:** Bikeworks and CTUK courses are both Bikeability

### LIP funding for cycle training



2005-2006	2006-2007	2007-2008	2008-2009	2009-2010
£30,000	£36,000	£86,500	£82,000	£110,000

### Cycle training outputs – schools

2008/09	Total number schools	Total offered	% offered	Total received	% received
Schools & cycle training	88	88	100%	53	60%

### Cycle training outputs – children

Total LIP spend on child cycle training = £71.7k

Year	Total children trained	Total children trained to L2	% children trained to L2
2006/07	520	244	47%
2007/08	987	906	92%
2008/09	1180	597	51%

### Progress on targets

Year	Total number eligible Yr 6 children	Total number children trained to L2	% eligible Yr 6 children that received L2
2007/08	2881	906	31%
2008/09	2855	597	21%

### Cycle training outputs – adults

Total LIP spend on adult cycle training = £10.3k

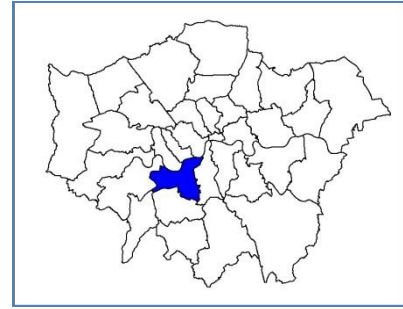
Year	Total adults trained
2006/07	64
2007/08	105
2008/09	88

### Synopsis

Waltham Forest cycle training is currently outsourced to Bikeworks and CTUK who are both registered and deliver high quality Bikeability cycle training.

### Suggested action plan

- Currently 21% Year 6 receive Level 2 training. Increase towards 100% by 2012.
- Assess capacity to meet demand for adult cycle training



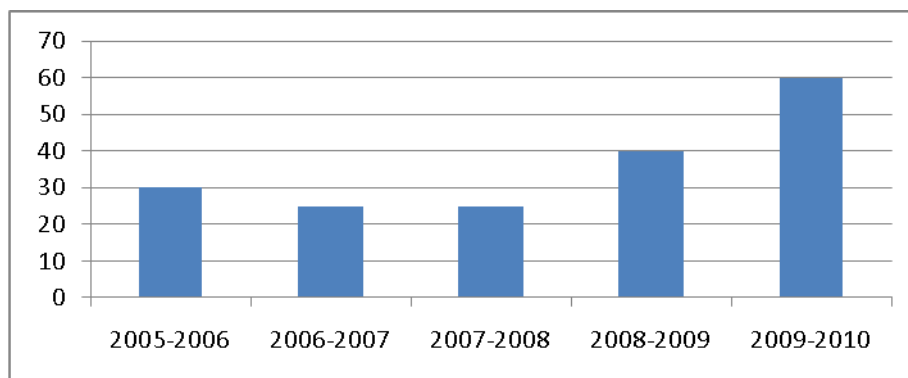
## Wandsworth

**Contact:** Martin Andrews, Road Safety Officer T: 020 8871 6670 E: mandrews@wandsworth.gov.uk

**Delivery model:** All cycle training delivered in house by contracted staff

**Bikeability:** In progress

### LIP funding for cycle training



2005-2006	2006-2007	2007-2008	2008-2009	2009-2010
£30,000	£25,000	£25,000	£40,000	£60,000

### Cycle training outputs – schools

2008/09	Total number schools	Total offered	% offered	Total received	% received
Schools & cycle training	100	100	100%	48	48%

### Cycle training outputs – children

Total LIP spend on child cycle training = £20k

Year	Total children trained	Total children trained to L2	% children trained to L2
2006/07	400	100	25%
2007/08	653	449	69%
2008/09	999	459	46%

### Progress on targets

Year	Total number eligible Yr 6 children	Total number children trained to L2	% eligible Yr 6 children that received L2
2007/08	2252	449	20%
2008/09	1000	459	46%

### Cycle training outputs – adults

Total LIP spend on adult cycle training = £20k

89 adults requested cycle training in 08/09

Year	Total adults trained
2006/07	54
2007/08	42
2008/09	80

### Synopsis

The local Wandsworth scheme uses National Standards Instructors to deliver a course that is very close to a Bikeability standard. The staff in Wandsworth have worked hard to maintain the independence of their course when developing it, and the course and materials are compliant with Bikeability.

### Suggested action plan

- Wandsworth to register for Bikeability so all materials issued can be Bikeability.
- Currently 46% Year 6 receive Level 2 training. Increase towards 100% by 2012.
- Assess capacity to meet demand for adult cycle training



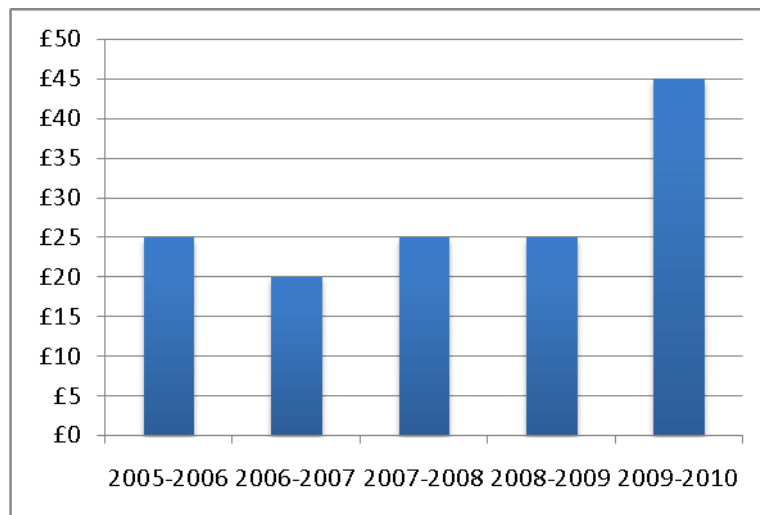
## Westminster

**Contact:** Peter Wilson, Cycle Training Officer T: 020 7641 2016 E: [pwilson@westminster.gov.uk](mailto:pwilson@westminster.gov.uk)

**Delivery model:** Some courses are delivered in house and some are outsourced to Cycle Confident

**Bikeability:** Cycle Confident and LB Westminster are Bikeability

### LIP funding for cycle training



2005-2006	2006-2007	2007-2008	2008-2009	2009-2010
£25,000	£20,000	£25,000	£25,000	£45,000

### Cycle training outputs – schools

08/09	Total number schools	Total offered	% offered	Total received	% received
Schools & cycle training	78	50	64%	14	18%

### Cycle training outputs – children

Total LIP spend on child cycle training = £17.5k

Year	Total children trained	Total children trained to L2	% children trained to L2
2006/07	220	220	100%
2007/08	201	201	100%
2008/09	297	297	100%

### Progress on targets

Year	Total number eligible Yr 6 children	Total number children trained to L2	% eligible Yr 6 children that received L2
2007/08	1445	201	14%
2008/09	1200	297	25%

### Cycle training outputs – adults

Total LIP spend on adult cycle training = £7.5k

220 adults requested cycle training in 08/09

Year	Total adults trained
2006/07	240
2007/08	249
2008/09	205

### Synopsis

Promoting cyclist training through travel plans to businesses and companies will generate an interest in cycling and the demand for maintenance courses. Westminster recognise that a London Cycle hire scheme will generate interest in cycling for many adults who in the past would use public transport, and not have their own cycles in London, and they are developing resources to promote training to this new market.

### Suggested action plan

- Currently 25% Year 6 receive Level 2 training. Increase towards 100% by 2012.
- Assess capacity to meet potentially increasing demand for adult cycle training