



FERROVIAL AGROMAN
LAING O'ROURKE JV

Kennington Green head house & landscaping

Delivering the Northern line extension with

ferrovial
agroman



MAYOR OF LONDON



TRANSPORT
FOR LONDON



Engagement summary

- 23 March-20 April
- c.5,000 letters sent
- Emails to 218 local stakeholders
- Information placed on NLE noticeboards
- Public exhibitions on 23, 24 & 25 March
- Reminder letters to c.5,000 properties
- Door knocking around the Green
- Information displayed on NLE web pages

Engagement summary
















- 64 attendees at the public exhibition
- 104 feedback forms received
- Clear community steer on some options presented
 - Brick type
 - Raised kerb to form a bench
 - Ornamental trees
- Range of views on other options
- Percentages on the following slides have been rounded and may not total to 100%

Head house bricks

External Materials - Options

We would like to hear your views on which option you prefer

Brick Options:

	Option 1	Option 2	Option 3	Option 4	Option 5
Brick Options:	 Smeed Dean Islington Yellow Rustics	 Smeed Dean London Stock	 Hammersmith London Stock	 Lambeth Yellow Multi	 Mystique (previously rejected at Planning Committee)
Brick Options:	 The Rowan SARC, Antrim	 Duke of York Square, Chelsea	 Residential Boundary Wall, London	 Private Residence, Croydon	 Chelsea Academy, Lots Road, Chelsea
Louvre Metal Finish:	 Bronze metallic anodised aluminium louvre (UA Analok 545)	 Bronze metallic anodised aluminium louvre (UA Analok 547)	 Bronze metallic anodised aluminium louvre (UA Analok 543)	 Bronze metallic anodised aluminium louvre (UA Analok 547)	 Bronze metallic anodised aluminium louvre (UA Analok 545)
	36 (35%)	22 (21%)	17 (17%)	7 (7%)	7 (7%)

No preference: 5 (5%)

Do not like any: 9 (9%)

Eastern edge: Kennington Road



FERROVIAL AGROMAN
LAING O'ROURKE JV

Landscape - Options

We would like to hear your views on which option you prefer

We have looked at options for the landscaping along the eastern edge of the Green on Kennington Road.

Option 1:

- Perimeter Kerb

Option 2:

- Raised Kerb to form a bench



Option 1:

- Perimeter granite kerb to grassed area at height of grass
- Height of perimeter kerb 200mm above pavement
- Depth of perimeter kerb 200mm
- Grass level with perimeter kerb
- In alignment with the 2014 approved Initial scheme

19 (18%)



Option 2:

- Perimeter granite kerb raised to form a bench on eastern perimeter of Kennington Green along length of Kennington Road
- Height of bench 400mm above pavement
- Depth of bench 400mm
- Grass level 200mm below surface of bench
- Feature lighting strip flush with pavement below bench

57 (55%)

No preference: 3 (3%)

Do not like any: 24 (23%)



Tree options on the Green

Landscape - Tree Options

We would like to hear your views on which option you prefer

40
(39%)



Option 1: June Berry:

• Image shows tree at circa 5 years



Option 2: Silver Birch:

• Image shows tree at circa 5 years

We have investigated options for a number of different tree species suitable for the Green. Indicative tree ages are provided.

Option 3:

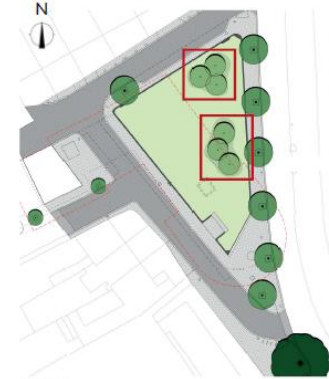
18
(17%)

Option 4:

• Medlar

4 approved

14 approved



Key Plan

Location of tree options

13
(13%)



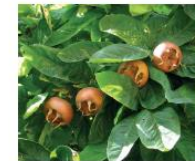
Option 3: Quince:

• Image shows tree at circa 15 years



Option 4: Medlar:

• Image shows tree at circa 10 years



2
(2%)

No preference: 3 (3%)

Do not like any: 27 (26%)

Southern tip of the Green

Landscape - Options

We would like to hear your views on which option you prefer

5
(5%)



Option 1:
Hard landscaped area to southern corner of the Green

We have looked at options for the landscaping at the southern corner of the Green.

Option 1:

- Hard landscaped area to southern corner of the Green
- In alignment with the 2014 approved Initial scheme

Option 2:

- Kennington Green landscaping extended into southern corner, with a planted perennial bed

Option 3:

- Kennington Green landscaping extended into southern corner, with an extension of the grassed area

Option 4:

- Hard landscaped area to southern corner of the Green, with raised planters maintained by the community



Option 2:
Kennington Green landscaping extended into southern corner, with a planted perennial bed

34 (33%)



Option 3:
Kennington Green landscaping extended into southern corner, with an extension of the grassed area

25 (25%)



Option 4:
Hard landscaped area to southern corner of the Green, with raised planters maintained by the community [indicative]

7 (7%)

No preference: 4 (4%)

Do not like any: 27 (26%)



Engagement summary

Head House Facade - Options

We would like to hear your views on which option you prefer

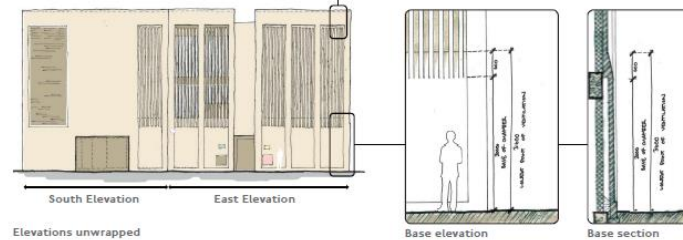
29
(28%)



Option 1: Vertical brick fin patterning recessed

Option 1:

- Outline of brick fin panel extended to ground level as recess
- Face of brick fins recessed 50mm within cavity



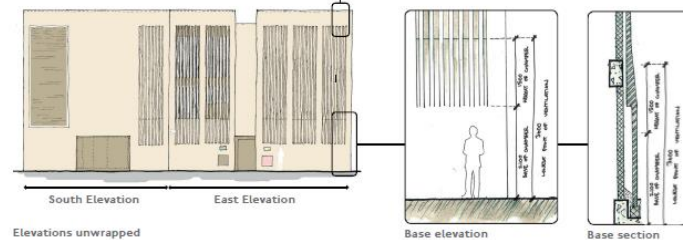
26
(25%)



Option 2: Vertical brick fin patterning lowered

Option 2:

- More subtle sloped brickwork from brick fins to the base (chamfer)
- Lowered point of chamfer to reduced height of building base



No preference: 10 (10%)

Do not like any: 38 (37%)

West facade of head house

West Facade - Options

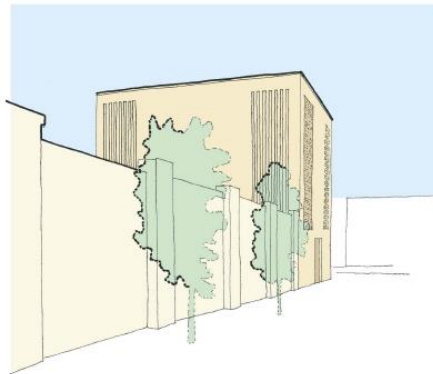
We would like to hear your views on which option you prefer

7
(7%)



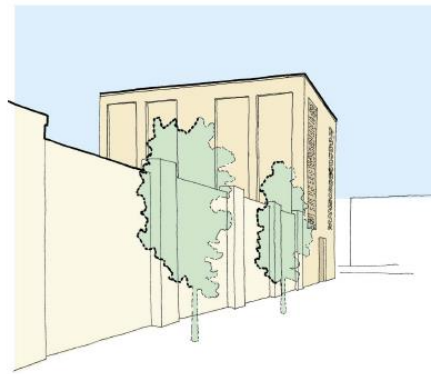
We have sketched up some indicative designs for the back wall. This wall faces west on to Montford Place.

Option 1: Free of patterning



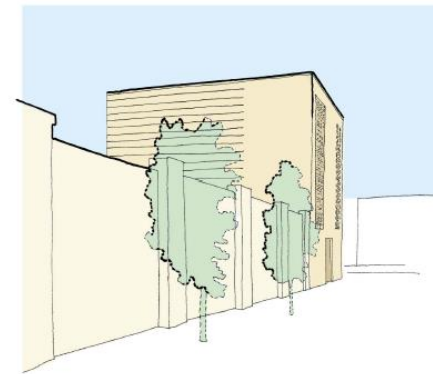
Option 2: Vertical brick fin patterning

26 (25%)



Option 3: Recessed rectangular vertical areas

19 (19%)



Option 4: Projecting brick courses

8 (8%)

No preference: 7 (7%) Do not like any: 35 (34%)

Next steps

- All responses will be reviewed and a full engagement report will be compiled
- The report will be issued to members of this CLG group, respondents who left their contact details
- The report will also be available online
- We will use feedback received, Lambeth feedback and our own considerations to help inform our final designs
- We will submit to Lambeth for determination