



Northern Line Extension

Battersea

Community Liaison Group 17.03.15



Summary Update

- following award of design and build contract and submission of Code of Construction Part Bs to Local Authorities, we have started enabling works at all four sites, including Battersea.
- Main works to start during 2015 following approval of Code of Construction Practice part Bs (CoCP B)
- Community Drop in sessions held for COCP B consultation in December 2014. Comments received from local residents.
- Ongoing engagement with third parties

NLE Project Draft timetable

Year	Key milestones
2014	Transport and Works Act Order decision, Design & Build contract signed
2015	Agreement on Code of Construction Practice Part B, Start of main works at all sites
2016	Start of Tunnel Boring Machines
2017	Completion of tunnelling
2018	Fit out of new stations, Kennington shafts complete inc reinstatement, work at Kennington station complete
2019	Testing, commissioning, trial operations
2020	NLE complete and in service

Battersea look ahead



Year	Key milestones
Jan- Feb 15	<ul style="list-style-type: none">• Topographical surveys of station, crossover box, Battersea Park Road, NR Lines and conveyor route.• Trial holes/GRP (Ground Penetrating Radar) surveys to confirm exact locations of existing service installations• Obtaining ground and water samples• Enabling works
Mar - May 15	<ul style="list-style-type: none">• Undertaking a UXO survey (Unexploded Ordnance). Radar detection from ground level• Construction of conveyor foundations• Establishment of office accommodation• Hoarding Survey• Hoarding Installation• Preparation of site for sheet piling operations• Diversion of services



Battersea Summary Update



Office established and moved in

Demolition completed at northern end of FLO site by BPSDC



Historical survey of jetty



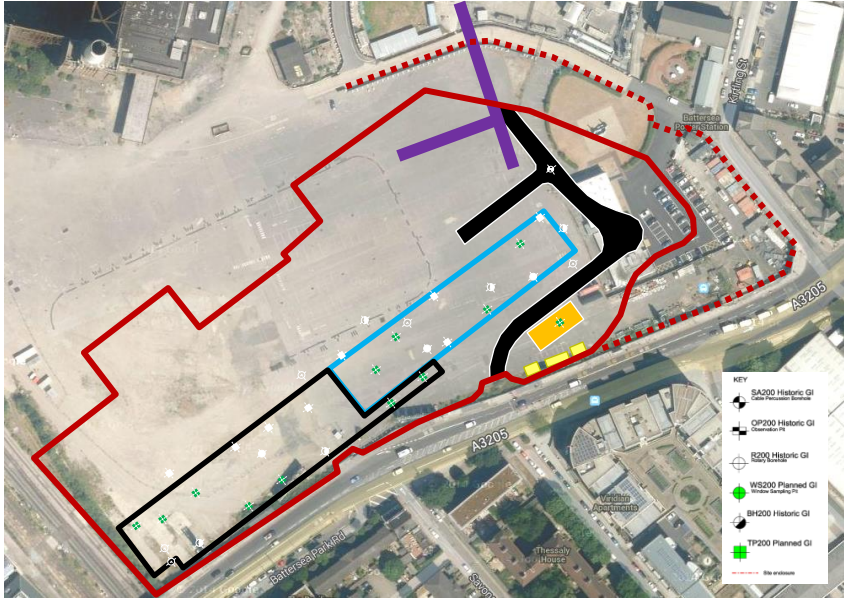
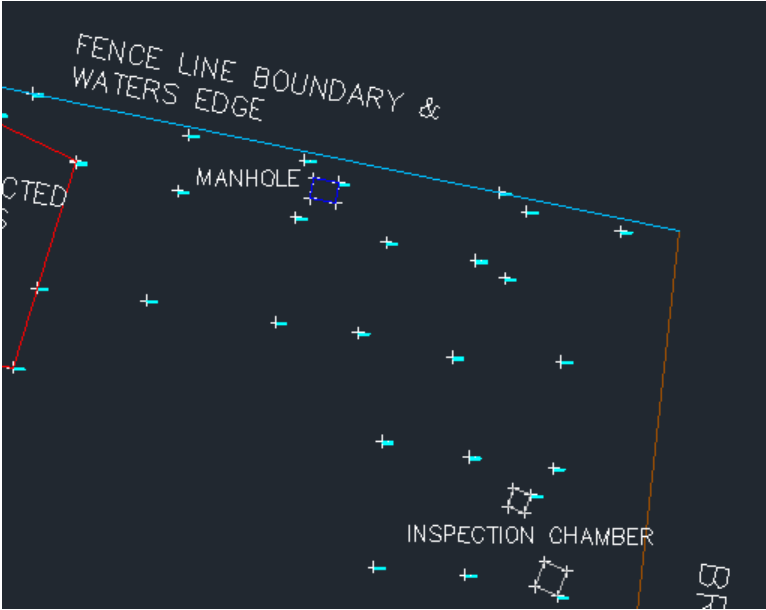
Site clearance throughout FLO site by BPSDC



Summary Update

Topographical survey completed

Land clearance and subsequent trial holes on Network Rail boundary, south-west corner of site



Ground Investigation

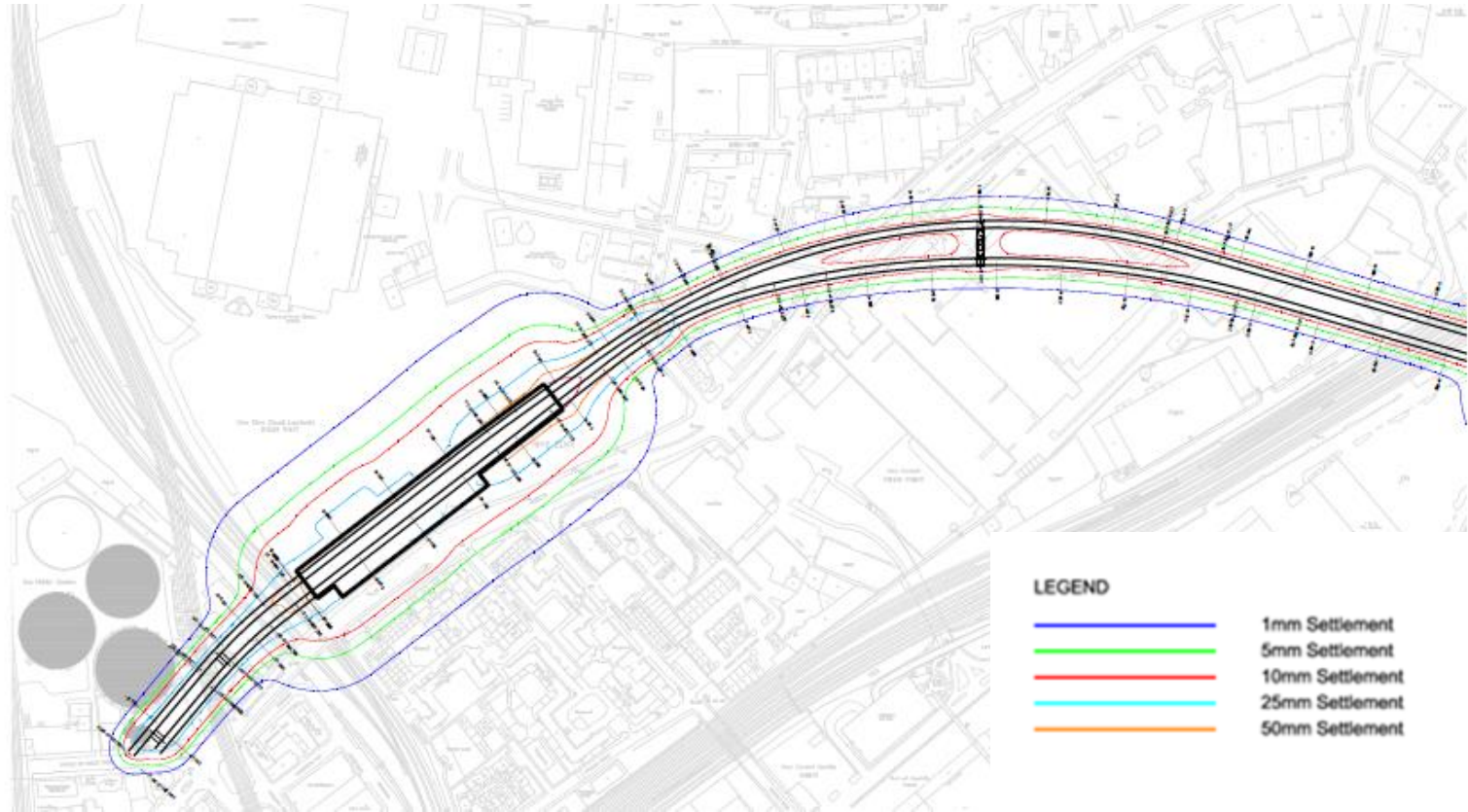


- The teams are undergoing concept design, which aims to develop effective solutions for the design and build of the NLE project
- Ground conditions for tunnelling predominantly London Clay. An ideal tunnelling medium.



Preliminary Settlement Contours

Battersea



Defect Surveys



- Defect Surveys to be undertaken by a qualified chartered building surveyor or engineer on properties predicted to experience 1mm or more settlement.
- TfL to contact affected properties via letter.
- A minimum of 4 weeks notice will be given to building owners prior to the defect survey being carried out.
- Where necessary a second survey will be undertaken to establish the difference between the two assessments.
- There will be a written and photographic record and a copy will be available to the property owner.



Measuring & Monitoring



- Monitoring outline design completed February 2015.
- Consultants currently carrying out damage assessments which will inform the detailed monitoring scope.
- Monitoring tender package to market during March, and award to follow during April/May 2015.
- Installation of ground monitoring studs to commence March/April 2015.
- A minimum of 4 weeks notice will be given to building owners prior to the installation of monitoring equipment.
- Envisaged that the monitoring equipment will comprise Building Research Establishment (BRE) studs (structure levelling studs) and 3D geodetic prisms.



Monitoring techniques

Buildings – Real time data:

3D geodetic prisms



Automatic Total Station (ATS)



Prisms

ATS: an electrical/optical instrument used in modern building construction to measure slope distances from the instrument to a particular point.

Monitoring techniques

Buildings – Manual data:

BRE studs (structure levelling studs)



Code of Construction Practice

Part B



- Plans have been updated with comments from December drop in sessions as appropriate
- Individual response to feedback to be sent imminently
- CoCP Bs submitted to London Boroughs of Wandsworth and Lambeth for discharge of planning condition in January
- The CoCP B are with Local Authorities awaiting approval



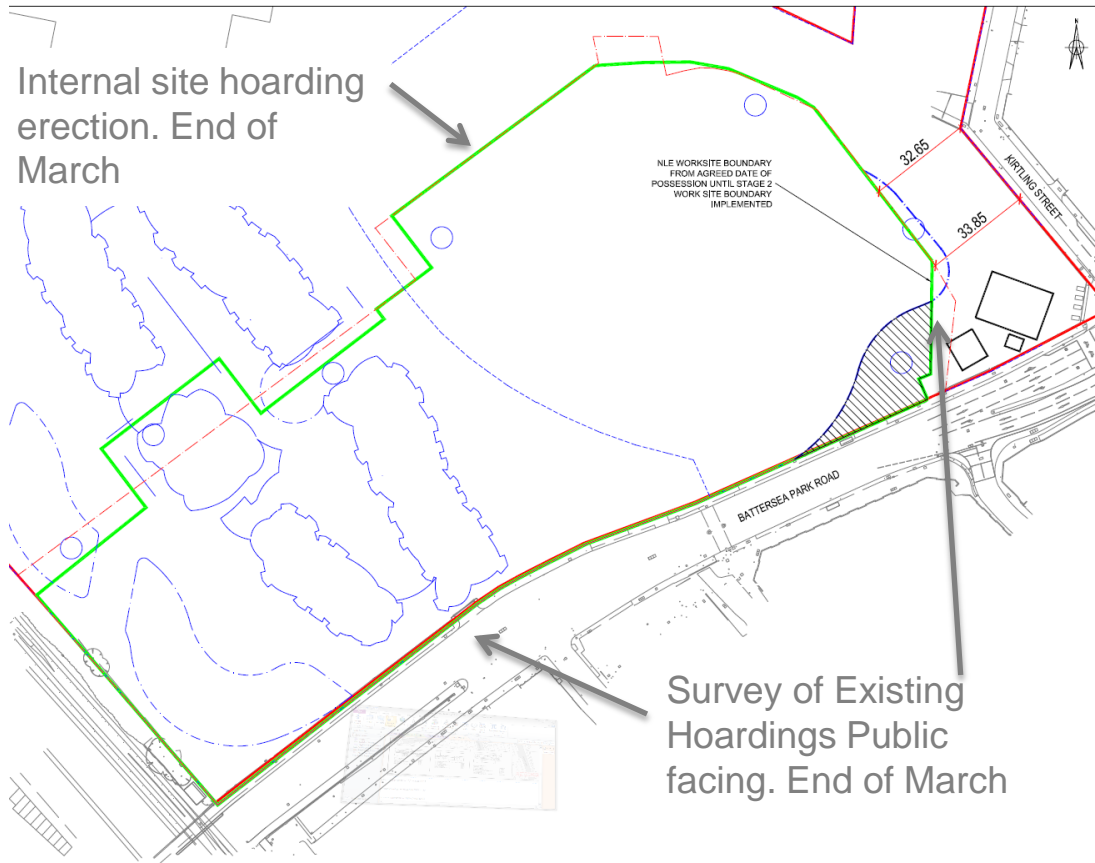
Construction Noise Assessment



- Noise modelling has been updated from the Environmental Statement, to include methodologies and mitigation
- Predictions will be reviewed on a 6 monthly basis to capture any design changes



Hoardings at Battersea

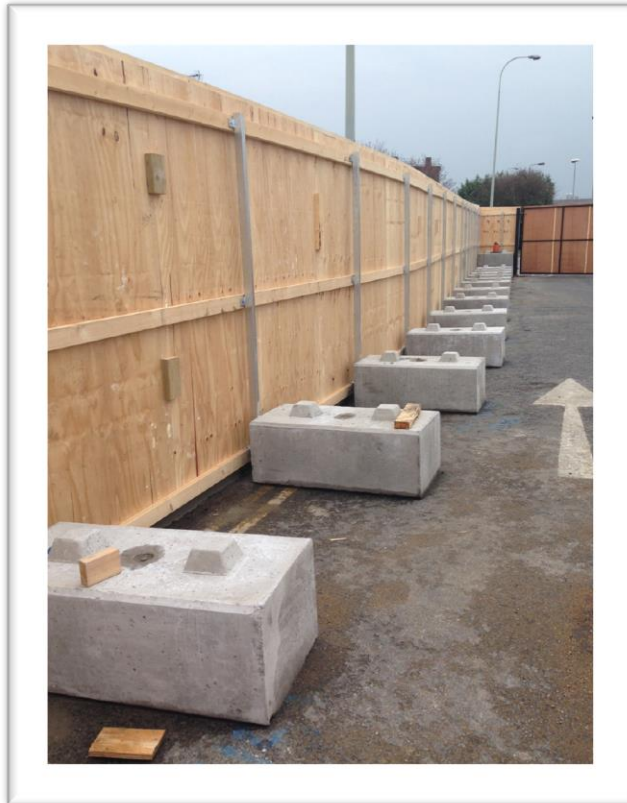


- Hoardings procured for all sites
- Hoardings will be 2.4 metres high
- Corporate TfL standards to be followed
- A survey is to be carried out at Battersea to establish the suitability of the existing hoardings

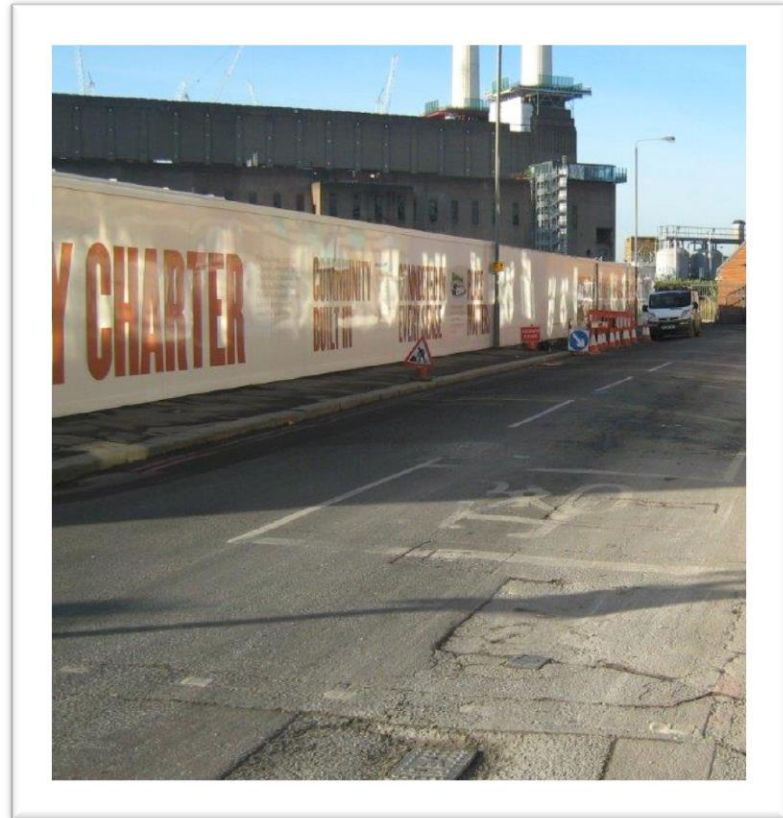


Hoardings at Battersea

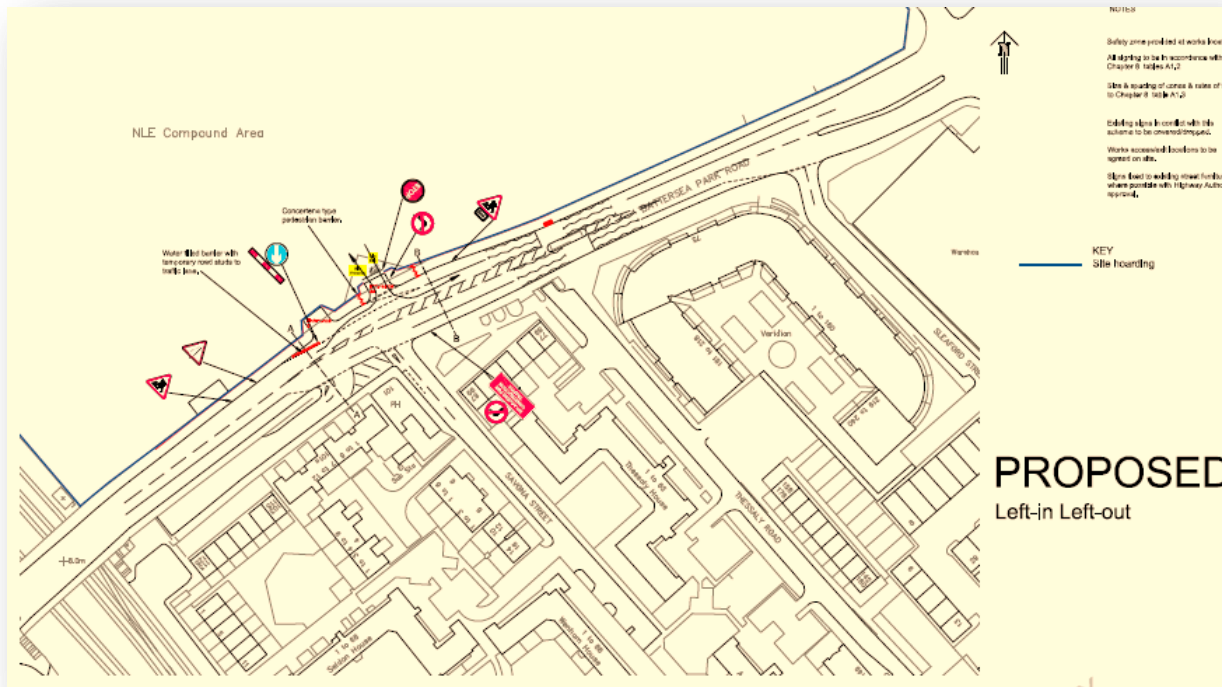
Internal Hoarding



External Hoarding



Traffic Management Plans



- Traffic Management Plans are with Local Authorities. Approval sought within next few weeks
- Vehicles entering and leaving are being modelled to minimise disruption
- Vehicles leaving site will be jet washed and road sweepers will operate in the area
- All vehicles drivers will be trained and vehicles will be fitted for cycle safety



NLE Complaints / Enquiries Summary

- 5 valid complaints received from December 14 – February 15

Date	Organisation	Address	Details of complaint	Response	Status
08/01/2015	Resident	Kennington Road	Reported wrong tree removal notifications at Kennington Green	Lambeth is dealing with the mistake at Lambeth and referred to the tree officer at Lambeth. Notification removed from incorrect tree.	Closed
16/01/2015	Resident	Imperial Court	Noise and nuisance near her property	Not related to our works, Chivas. Dealt within 24h. Though her initial contact was December 2014 Meeting held with resident and representative. Resident satisfied with outcomes.	Closed
26/01/2015	Resident	Kennington Road	Plants outside the green being removed.	The plants were removed by LBL and with no possibility of being reinstalled	Closed
22/01/2015	Resident	Imperial Court	Hoardings around the Montford Place site	Two visits have been held with resident and solutions are being investigated.	Open
02/02/2015	Resident	N/A	Works relative to Compass around Kennington Park	An email was sent to the complainant, explaining that Compass are not directly employ by FLO. Team liaises with Compass and make them aware of the issue.	Closed



Battersea Updates / Newsletters



Transport for London



Northern line extension

March 2015

Boosting jobs in the local economy



Careers expo at South Bank University

The Northern line extension will support the regeneration of Vauxhall, Nine Elms and Battersea and help create up to 25,000 jobs and 18,000 homes.

Local jobs and apprenticeships are a key priority. We have spoken with local authorities, job brokerages and our supply chain to staff the construction of the Northern line extension. The project will support around 1,000 jobs and 50 apprenticeships.

Our contractor Ferrovial Agroman Laing O'Rourke (FLO) will have a team of around 500 people at the busiest period of construction.

We recently attended a careers expo at South Bank University where Wandsworth and Lambeth school and college students were able to find out about career opportunities and apprenticeships. We also attended a similar event for students in Southwark and Lambeth at Goldsmith's University of London.

- NLE quarterly newsletter sent 13.03.2015
- Updates presented at BDCH and BPSD community liaison meetings in March
- Activity notification update for Battersea neighbours coming out early April

MAYOR OF LONDON



Consents



Approvals granted

Planning Condition 5 - removal of trees at Kennington Green and Kennington Park	L B Lambeth	Granted February 2014
Nine Elms Section 61 Consent (Control of Pollution Act – noise and vibration)	L B Wandsworth	Granted February 2014
Battersea Section 61 Consent (Control of Pollution Act – noise and vibration)	L B Wandsworth	Granted February 2014

Current applications under determination

All sites – application to discharge planning condition 10 - Archaeology	LB Lambeth and LB Wandsworth	Submitted February 2015
All sites – application to discharge planning condition 7 – CoCP pt B	LB Lambeth and LB Wandsworth	Submitted January 2015
Kennington Park, Kennington Green – applications for a Section 61 consent under the Control of Pollution Act - the minimisation of construction noise and vibration	LB Lambeth	Submitted March 2015



Consents (continued)



Current applications under determination

Kennington Park - application to discharge planning condition 18 – yellow hatched box junction – Kennington Park Place/Road	LB Southwark	Submitted January 2015
Kennington Park and Kennington Green – application to (initially) discharge Conservation Area Consent condition C (reinstatement)	L B Lambeth	Submitted January 2015
Nine Elms and Battersea - application to discharge planning condition 9 – Contaminated Land	LB Lambeth and LB Wandsworth	Submitted February 2015
Battersea – applications for approvals under Schedule 8 (Protective Provisions) of the TWAO – works within the river.	Marine Management Organisation	Submitted March 2015

Key forthcoming applications for approval

Battersea – applications for approvals under Schedule 8 (Protective Provisions) of the TWAO – works within the river.	EA, PLA	Planned be submitted March 2015
Kennington Station - application to discharge planning condition 19 – Kennington Station passenger flow monitoring protocols	LB Southwark	Planned be submitted early 2015 (direct by TfL)
Kennington Park and Kennington Green - application to discharge planning condition 9 – Contaminated Land	LB Lambeth	Planned be submitted March 2015



Jobs and apprenticeships



TfL's existing programmes

- Skills & Employment Strategy, Delivery Plan for Schools and Young People

Employment/Skills/Diversity on the NLE programme

- FLO is working in partnership with TfL and the local authorities – including the Nine Elms Vauxhall Strategy Board Employment, Training & Business Charter, Wandsworth Chamber of Commerce and Nine Elms Supply Chain
- Make sure employment/training opportunities are advertised within the job opportunity/brokerage schemes operated by Southwark, Lambeth & Wandsworth councils
- Encourage job starts for workless people in London, placement & taster positions, apprenticeships, skills development for staff, engagement with schools
- A Strategic Labour Needs and Training Plan is being developed with Local Authorities



Jobs and Business Opportunities



- FLO attended a Lambeth organised “How to be the best bet for buyers” event
- 19 February at the Kia Oval
- This was to present opportunities at the NLE and procedures on how to enter for tender packages
- Small and medium business had the opportunity to meet with major contractors



Lambeth

How to be the Best Bet for Buyers

Where:
Kia Oval
Kennington
London SE11 5SS

When:
Thursday
19 February 2015
9am – 3pm

Do you want to...
• Hear about major vehicle maintenance contracts
• Network with other businesses to develop partnerships to bid for larger contracts?
• Get expert advice on preparing and submitting tenders?
• Find out about major developments and work packages available for local subcontractors?
• Sign up with major housing contractors looking to contract with local subcontractors?
• Network with potential clients?

Hear from developers looking to work with businesses like you. Hear from industry experts and get free advice from the many exhibitors attending on the day. From understanding the pre-qualification process including health and safety, to financing major contract wins, to recruitment/employment, to gearing up to taking on large contracts. Throughout the day you will have the opportunity to speed network with other businesses and speak to exhibitors about live contracts and what you need to do to win that contract.

Programme

9.00am	Event opens and registration
9.15am	Cllr Jack Hopkins – Cabinet Member for Jobs and Growth
9.30am	Introducing South London Procurement Network
9.45am	Break – Attendees visit exhibitor stands
10.30am	Introducing Lambeth Procurement
11.00am	Julie Harmer – Member of CIPS
11.15am	Break – Attendees visit exhibitor stands
12.00pm	Lunch and Networking
1.00pm	Mears Group – How to win that contract
1.15pm	Break – Attendees visit exhibitor stands
1.30pm	Ferrovial Agroman Laing O'Rourke (FLO)
1.45pm	Break – Attendees visit exhibitor stands
2.00pm	St. James/Berkeley Group
2.15pm	Networking
2.00pm	Close

South London Procurement Network

To confirm your attendance please email info@slpn.org.uk with company and attendee's names.



Skills and Youth Engagement



Careers Expo for students 4-5 of March, at Goldsmith University



- Co-ordinated by Southwark Council.
- Hosted at Goldsmith University NLE in attendance at the event.
- More than 150 students attended NLE workshop.
- Encourage young people to consider construction as professional option.
- Promote the NLE benefits and awareness amongst young people.



Community engagement strategy



- Draft Strategy discussed at the June – July cycle of CLG’s
- Core CLG received all comments made
- Strategy and site specific engagement forecast tabled
- Southwark Career Expo March 2015.
- **6 months look ahead include:**
- Preparation and approval of a SLNT Plan.
- Preparation and approval of Youth and School Engagement Plan
- Preparation and approval of a Arts and Culture Strategy
- Activities around all four sites to ensure communication and engagement: Drop in sessions / Visits / Events / School Liaison



Thank you