


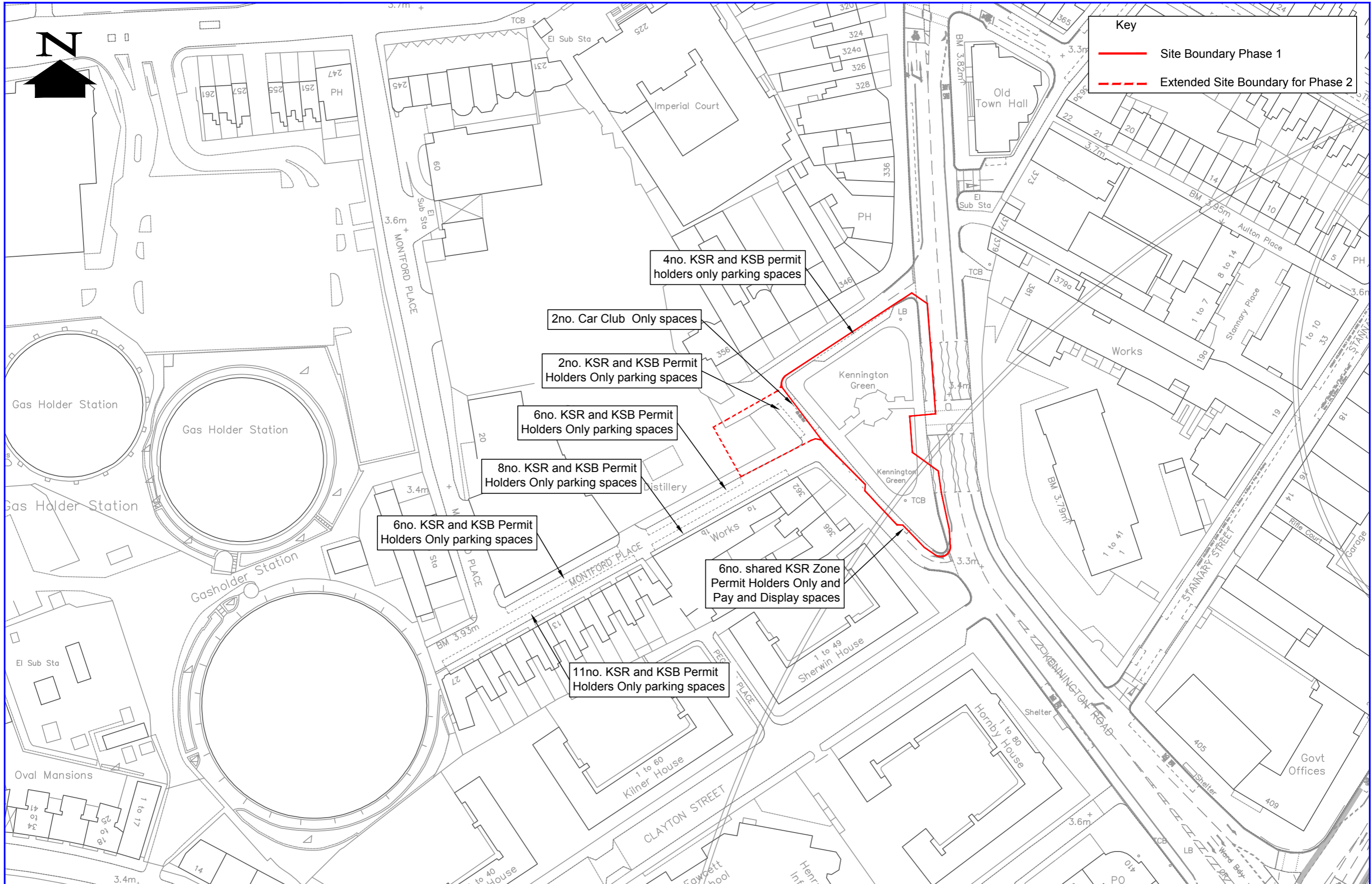


Key

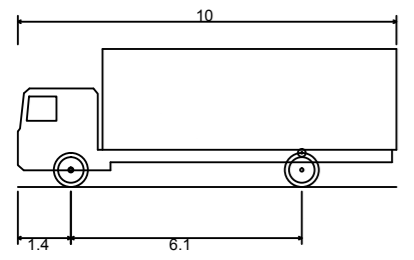
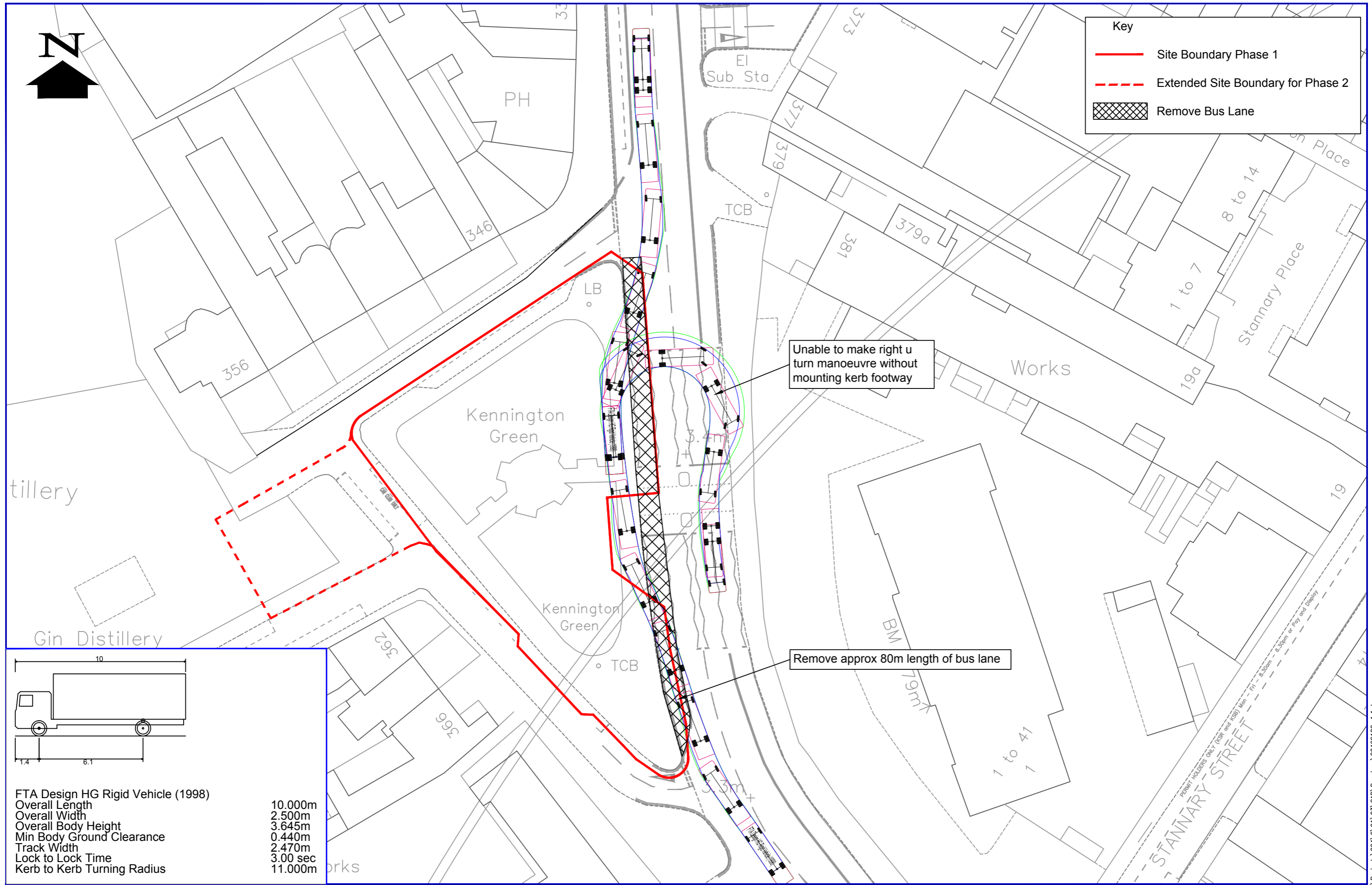
-  Access and Egress Routes
-  Site Boundary Phase 1
-  Extended Site Boundary for Phase 2





Key

- Site Boundary Phase 1
- - - Extended Site Boundary for Phase 2
- Remove Bus Lane



FTA Design HG Rigid Vehicle (1998)	
Overall Length	10.000m
Overall Width	2.500m
Overall Body Height	3.645m
Min Body Ground Clearance	0.440m
Track Width	2.470m
Lock to Lock Time	3.00 sec
Kerb to Kerb Turning Radius	11.000m

Northern Line Extension
Kennington Green - 10m Rigid Track Analysis

steer davis gleave

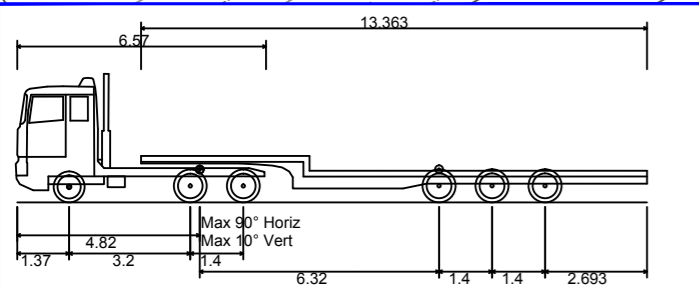
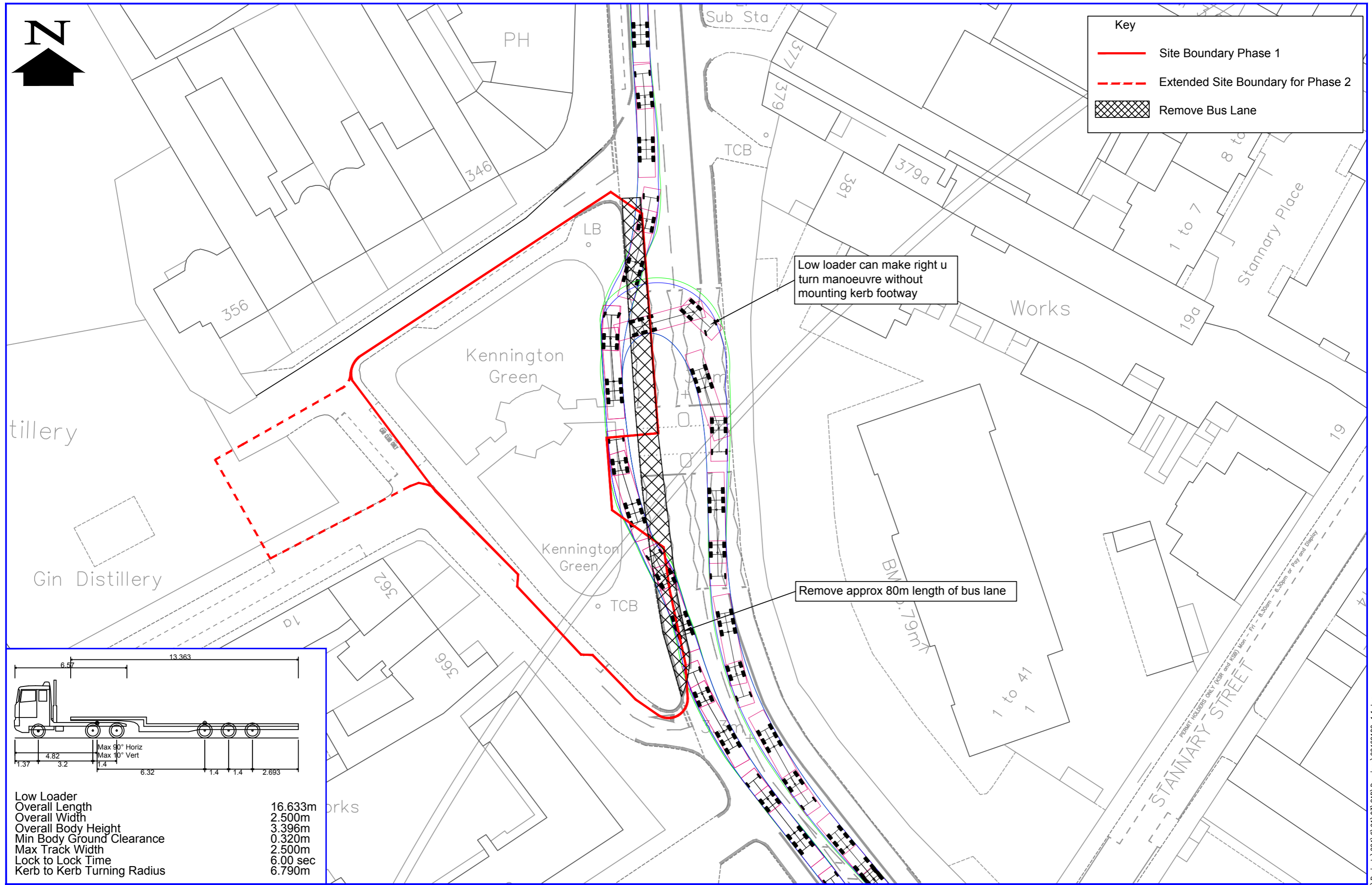
Drawn: CJP	Date: 02/04/13	Scale: 1:500	Figure No: 3-3
---------------	-------------------	-----------------	-------------------

CAD REFERENCE: F:\Projects\224\6\91\03\CAD\Drawings\22469102-1.1.dwg



Key

- Site Boundary Phase 1
- - - Extended Site Boundary for Phase 2
- Remove Bus Lane



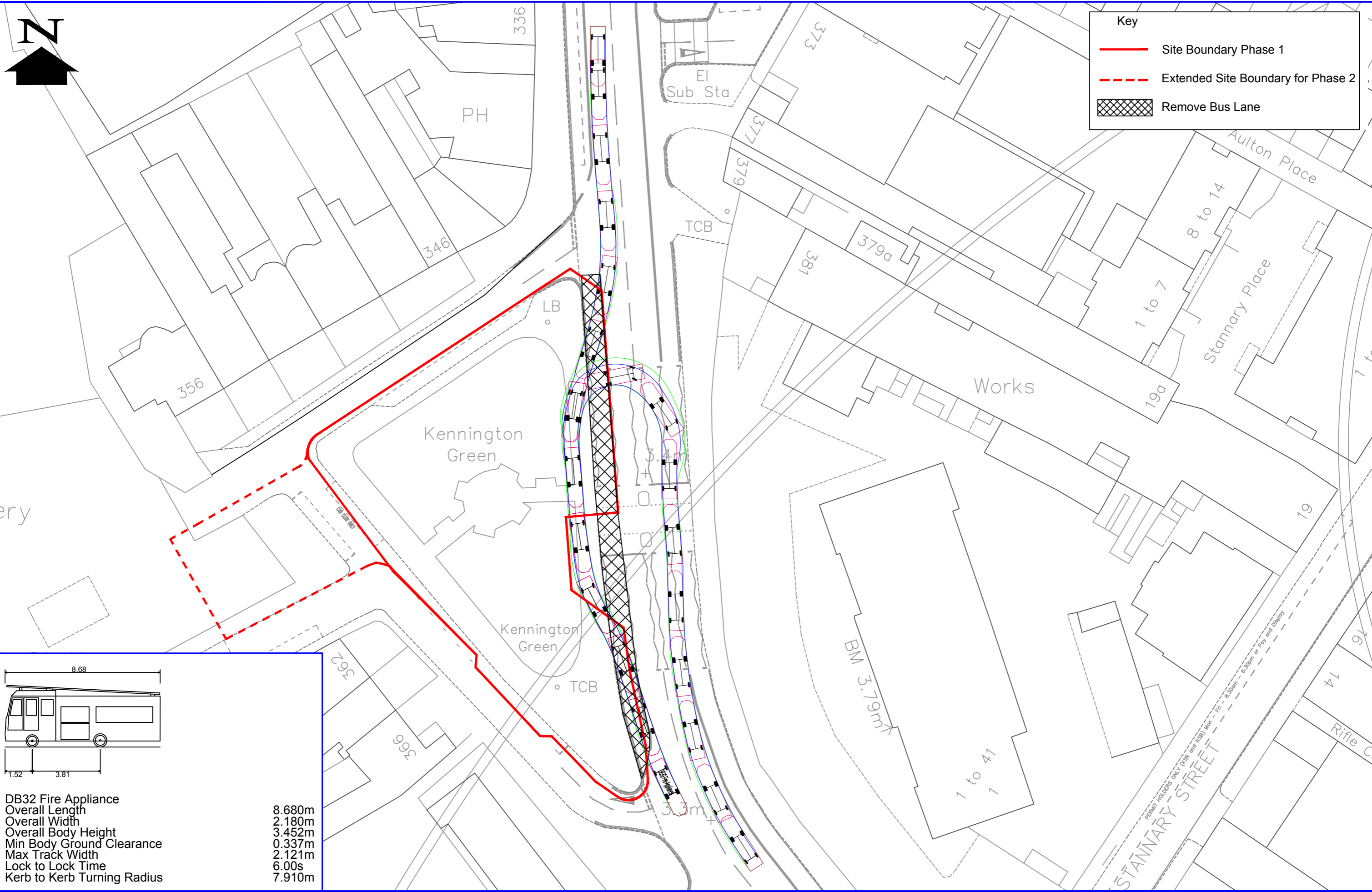
Low Loader	16.633m
Overall Length	2.500m
Overall Width	3.396m
Overall Body Height	0.320m
Min Body Ground Clearance	2.500m
Max Track Width	6.00 sec
Lock to Lock Time	6.790m
Kerb to Kerb Turning Radius	

Northern Line Extension
Kennington Green - Low Loader Track Analysis

steer davis gleave

Drawn: CJP	Date: 02/04/13	Scale: 1:500	Figure No: 3-5
---------------	-------------------	-----------------	-------------------

CAD REFERENCE: F:\Projects\224\6\91\03\CAD\Drawings\22469102-1.1.dwg



DB32 Fire Appliance	
Overall Length	8.680m
Overall Width	2.180m
Overall Body Height	3.452m
Min Body Ground Clearance	0.337m
Max Track Width	2.121m
Lock to Lock Time	6.00s
Kerb to Kerb Turning Radius	7.910m

Northern Line Extension
 Kennington Green - Emergency Vehicle Track Analysis

steer davis gleave

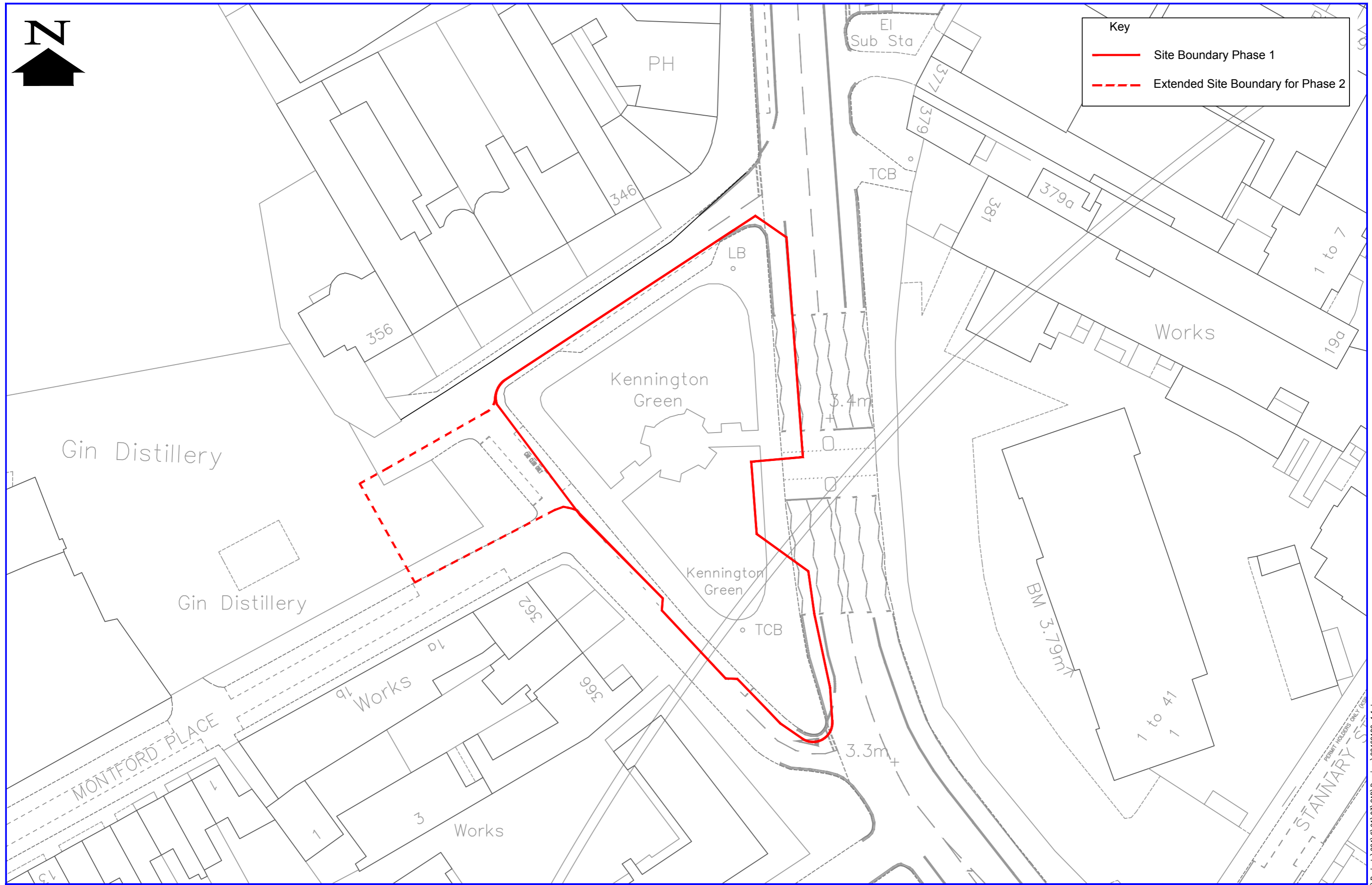
Drawn: CJP	Date: 10/01/13	Scale: 1:500	Figure No: 3-6
---------------	-------------------	-----------------	-------------------

CAD REFERENCE: F:\Projects\224\6\91\03\CAD\Drawings\22469102-1.1.dwg



Key

- Site Boundary Phase 1
- - - Extended Site Boundary for Phase 2





Key

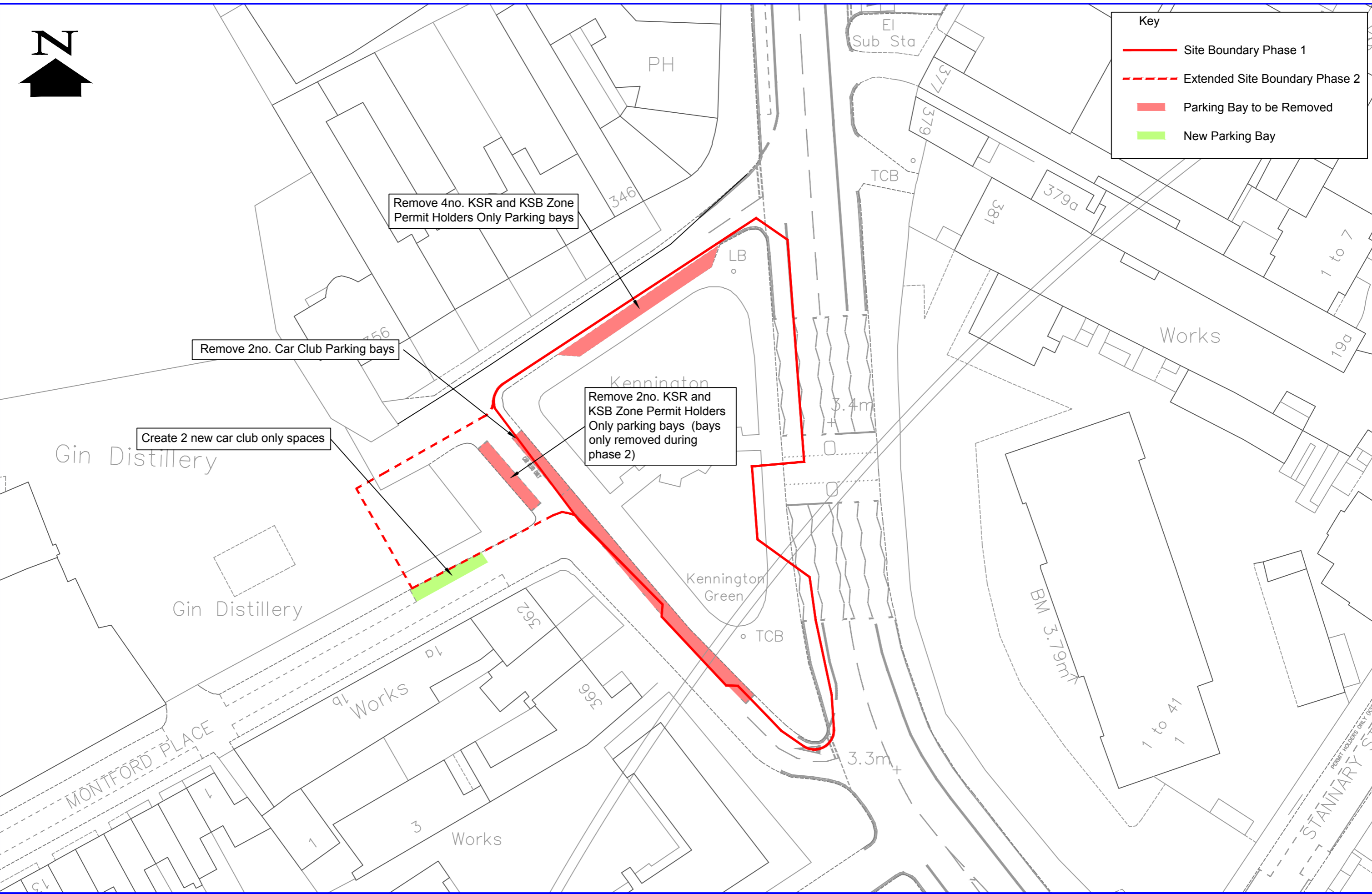
- Site Boundary Phase 1
- - - Extended Site Boundary Phase 2
- Parking Bay to be Removed
- New Parking Bay

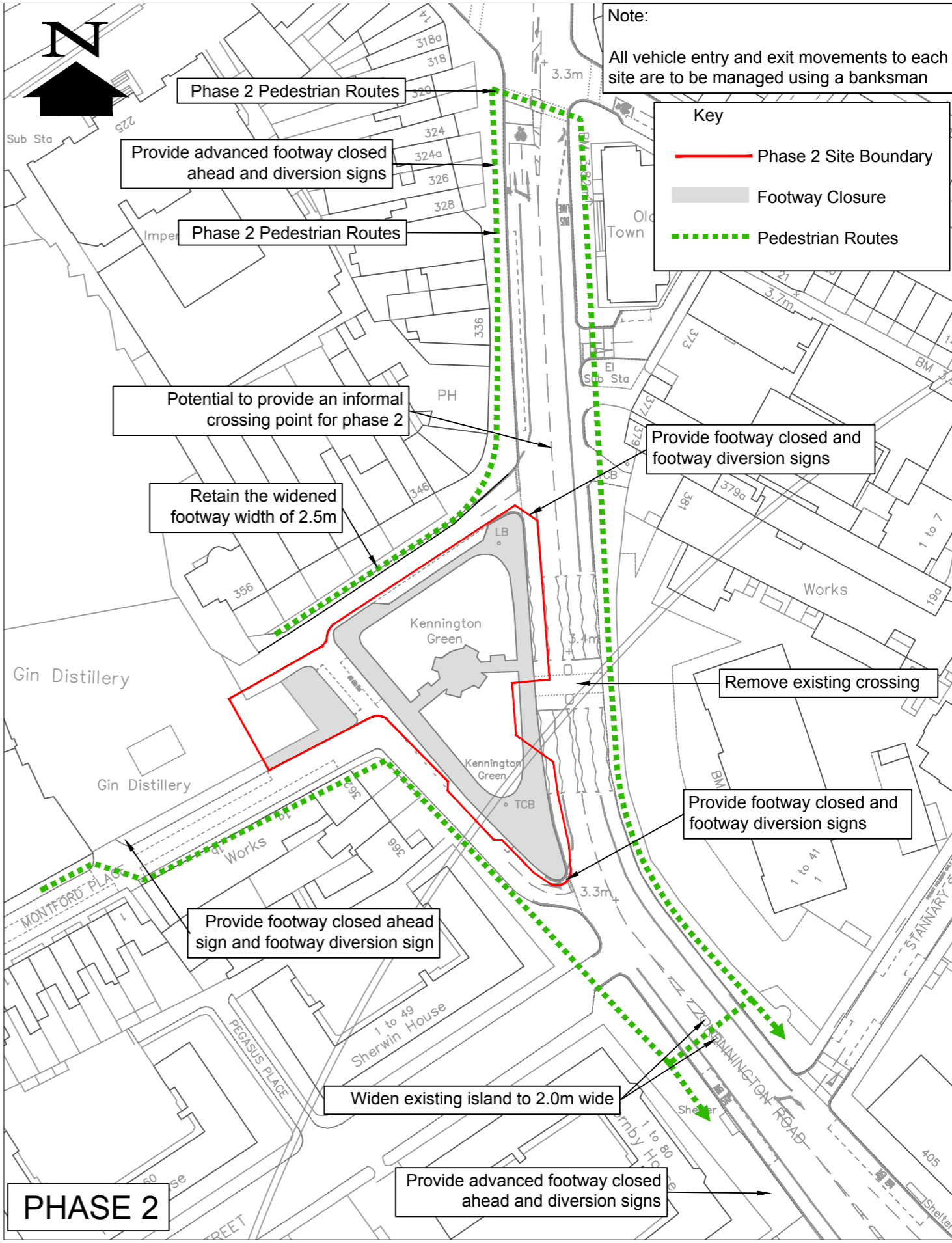
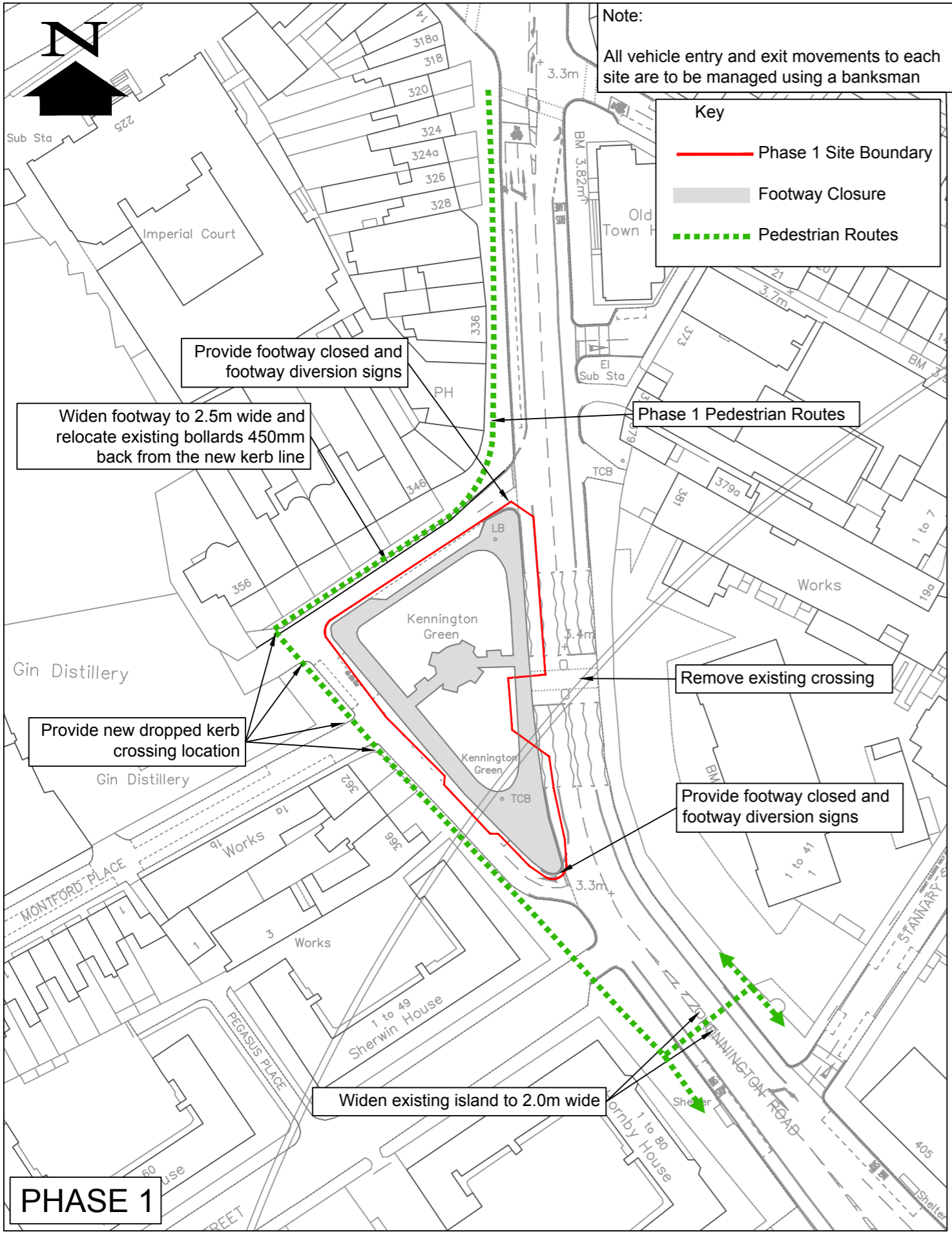
Remove 4no. KSR and KSB Zone Permit Holders Only Parking bays

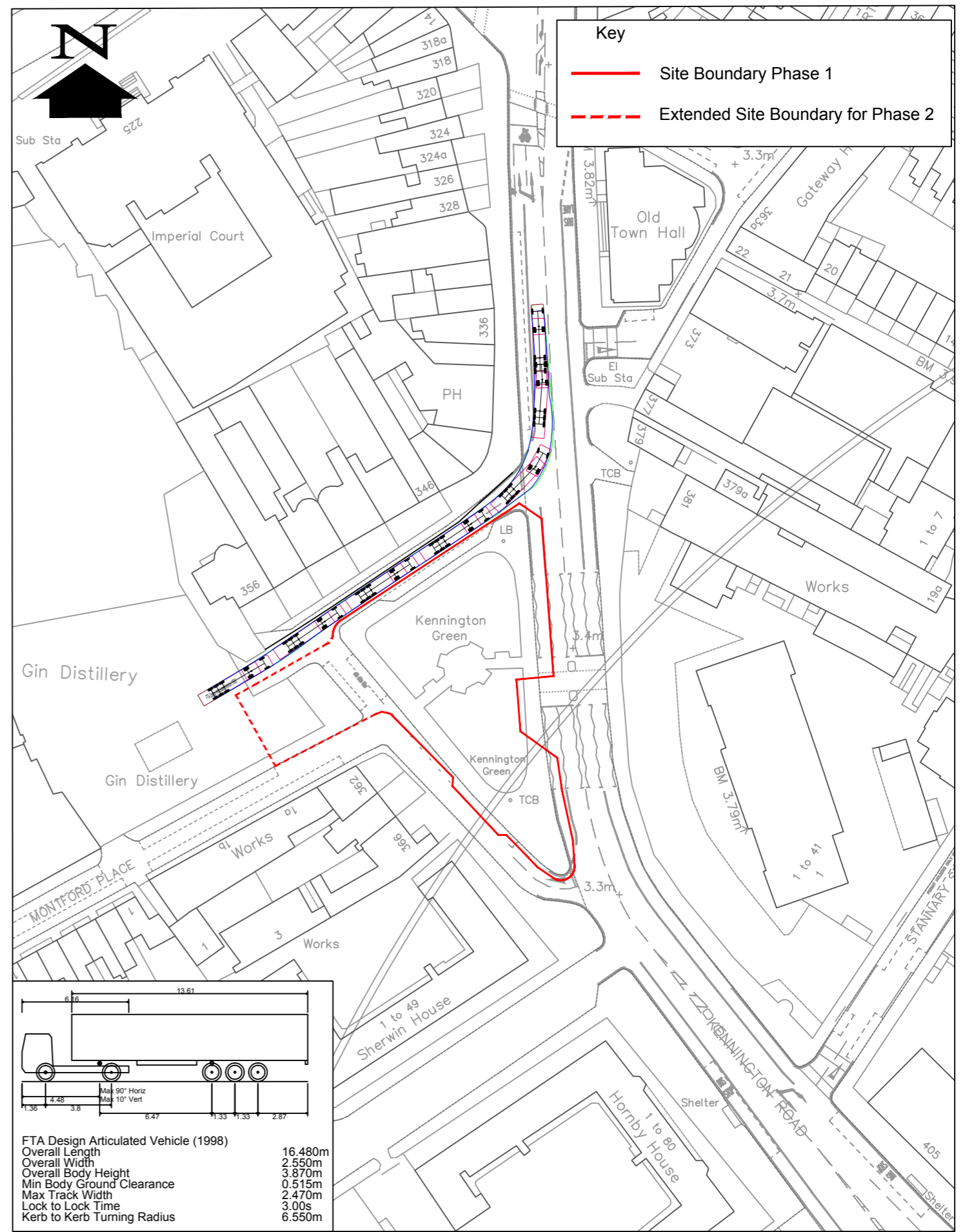
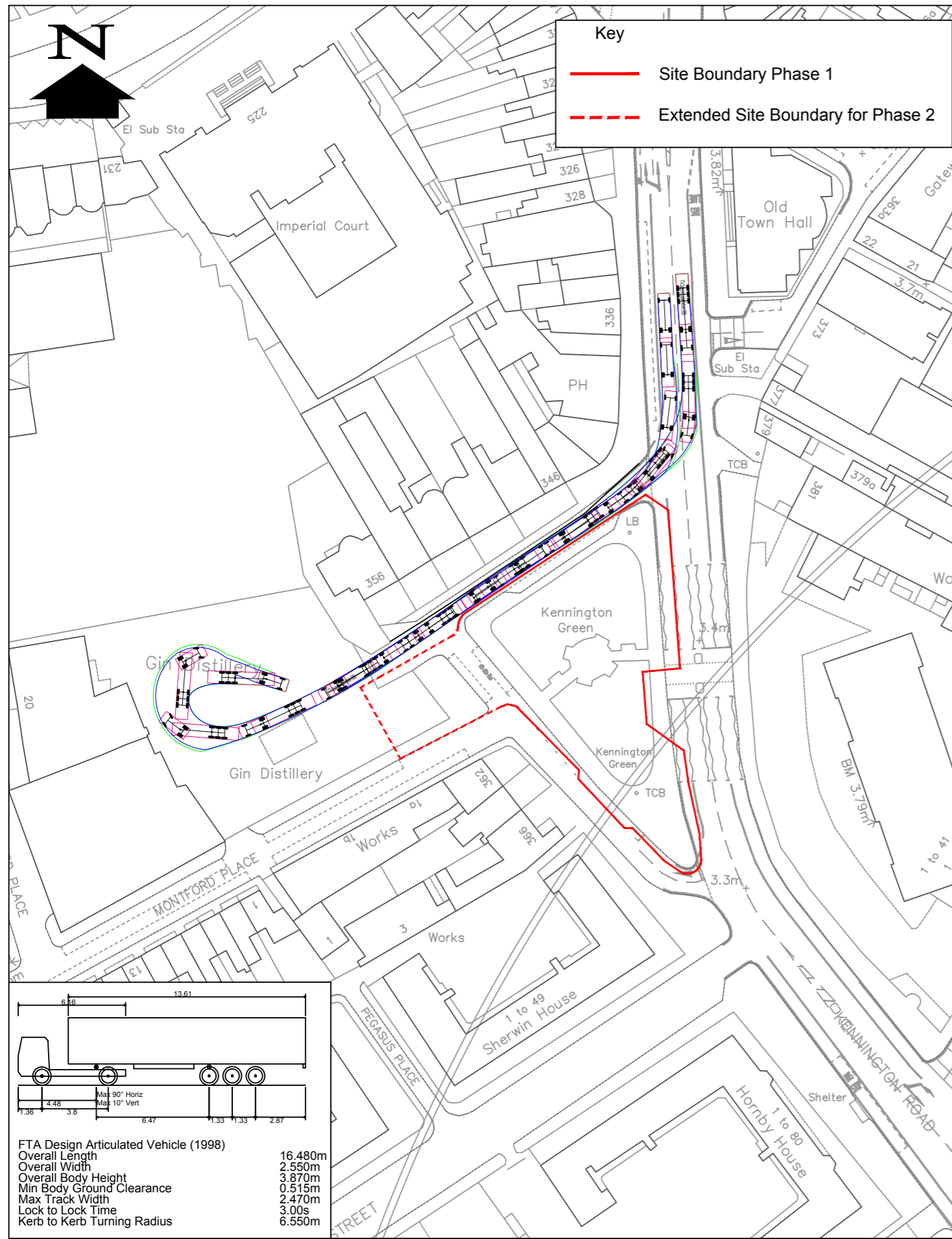
Remove 2no. Car Club Parking bays

Create 2 new car club only spaces

Remove 2no. KSR and KSB Zone Permit Holders Only parking bays (bays only removed during phase 2)

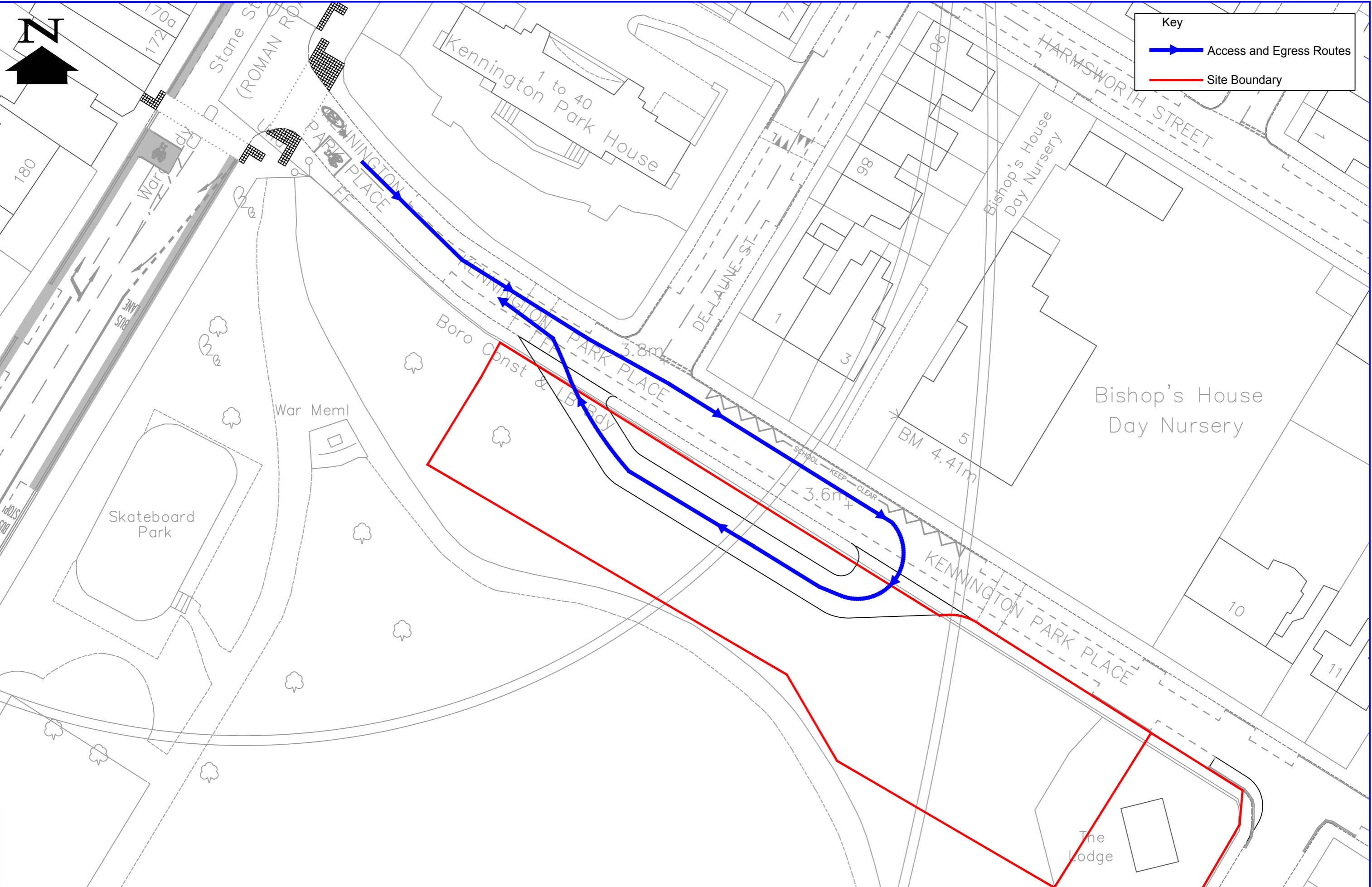


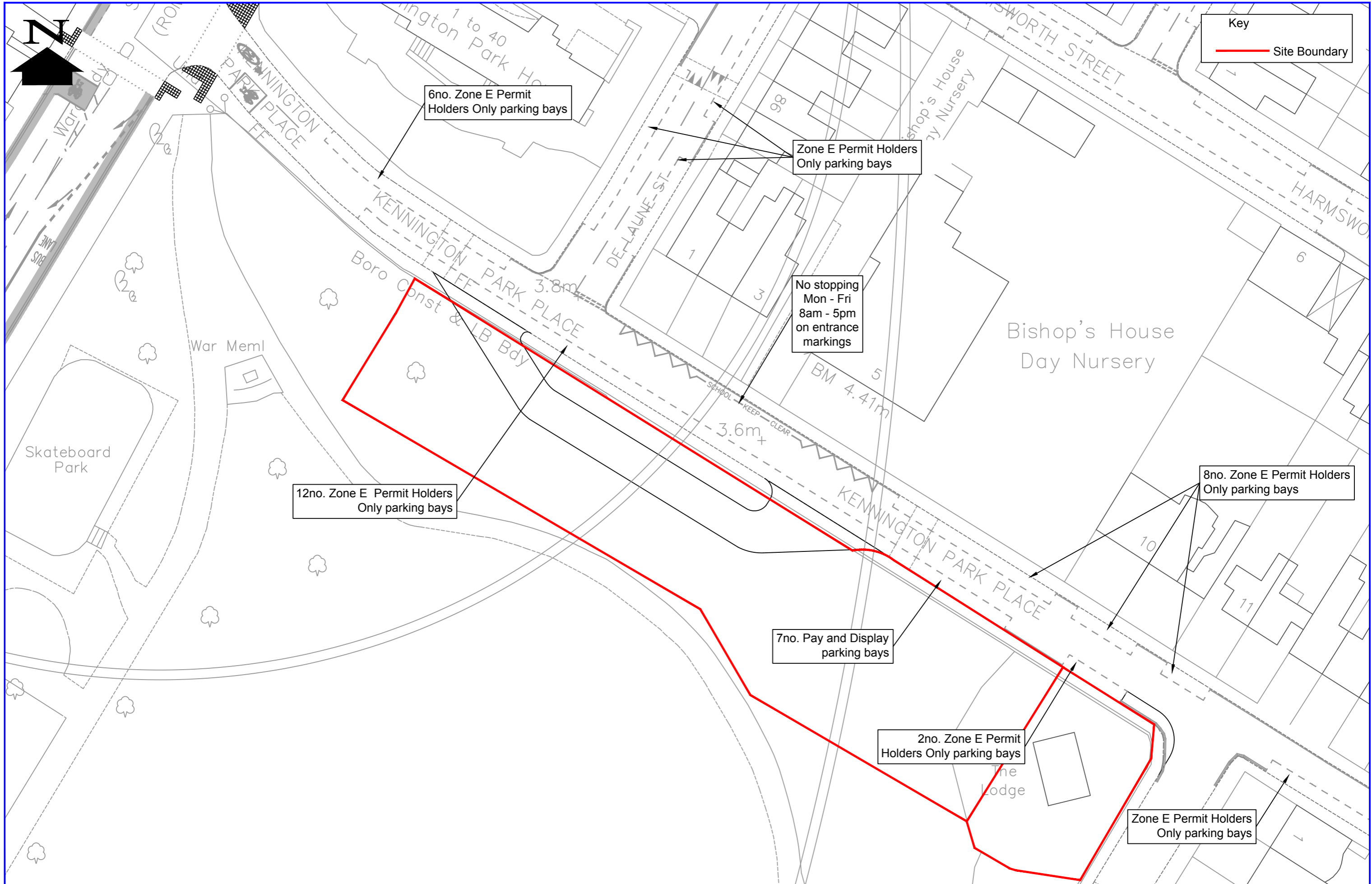




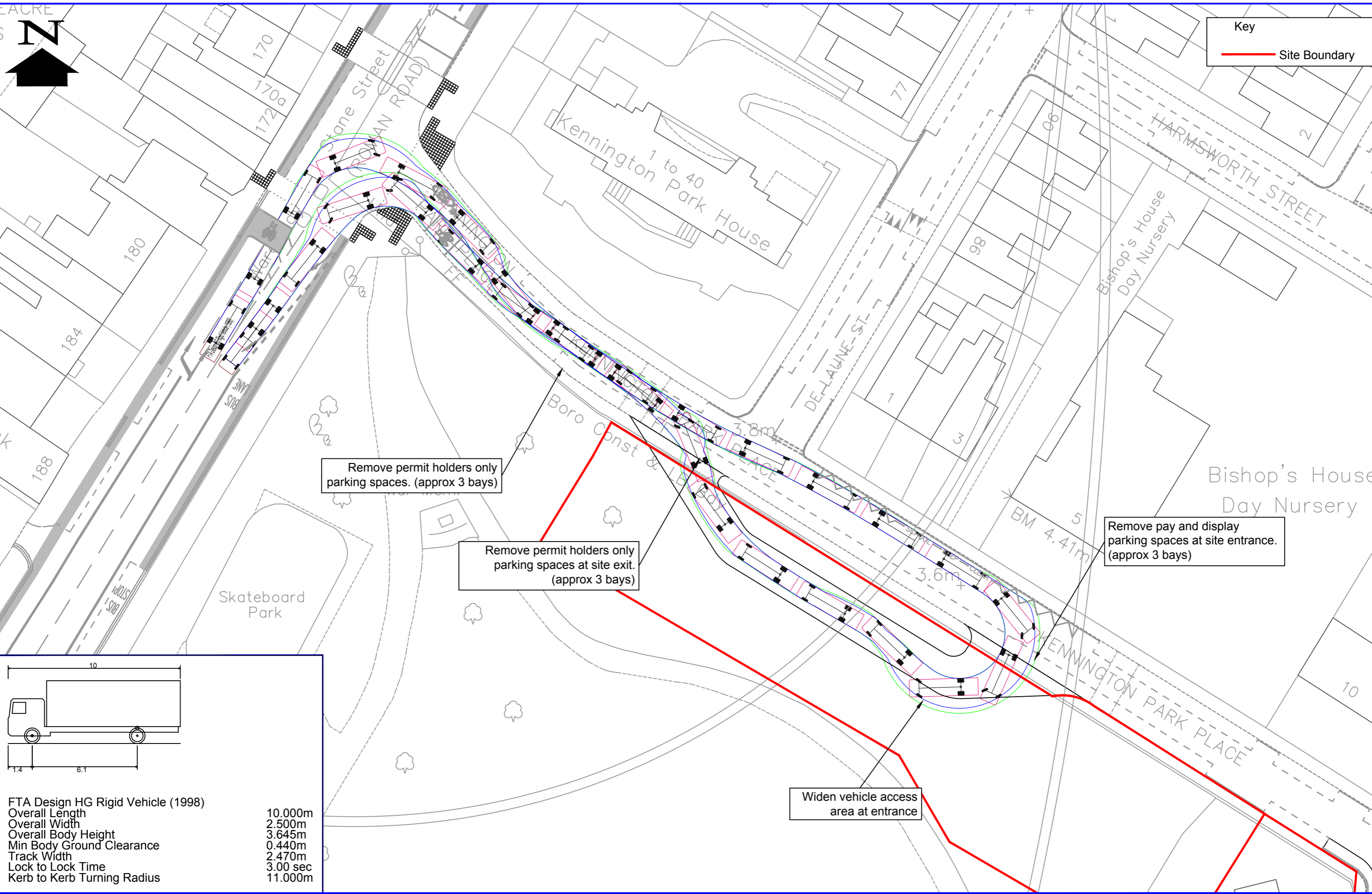
Northern Line Extension

Kennington Green - Distillery Access - 16.5m Articulated Lorry Track Analysis





Key
 — Site Boundary

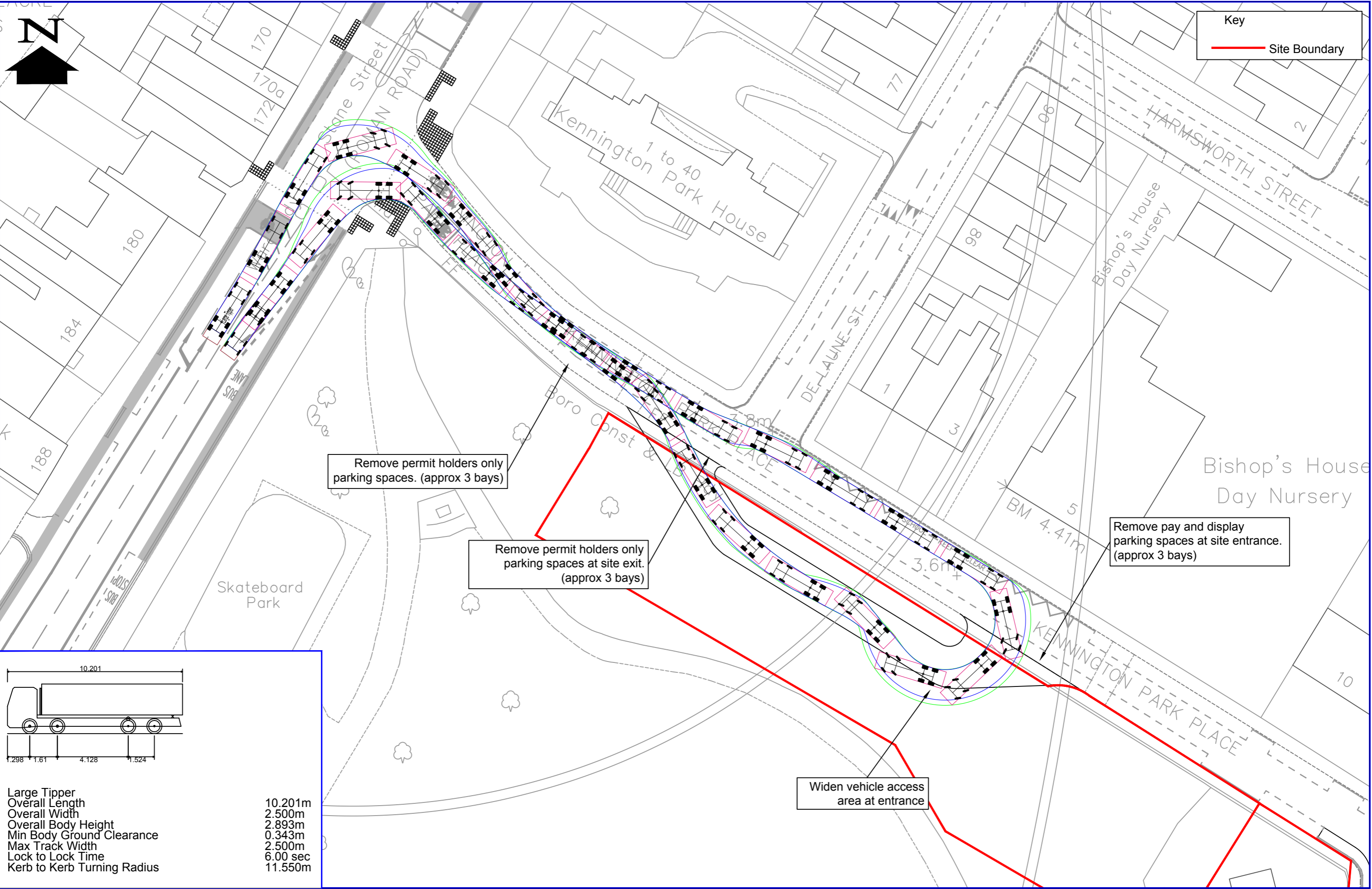


Key
— Site Boundary

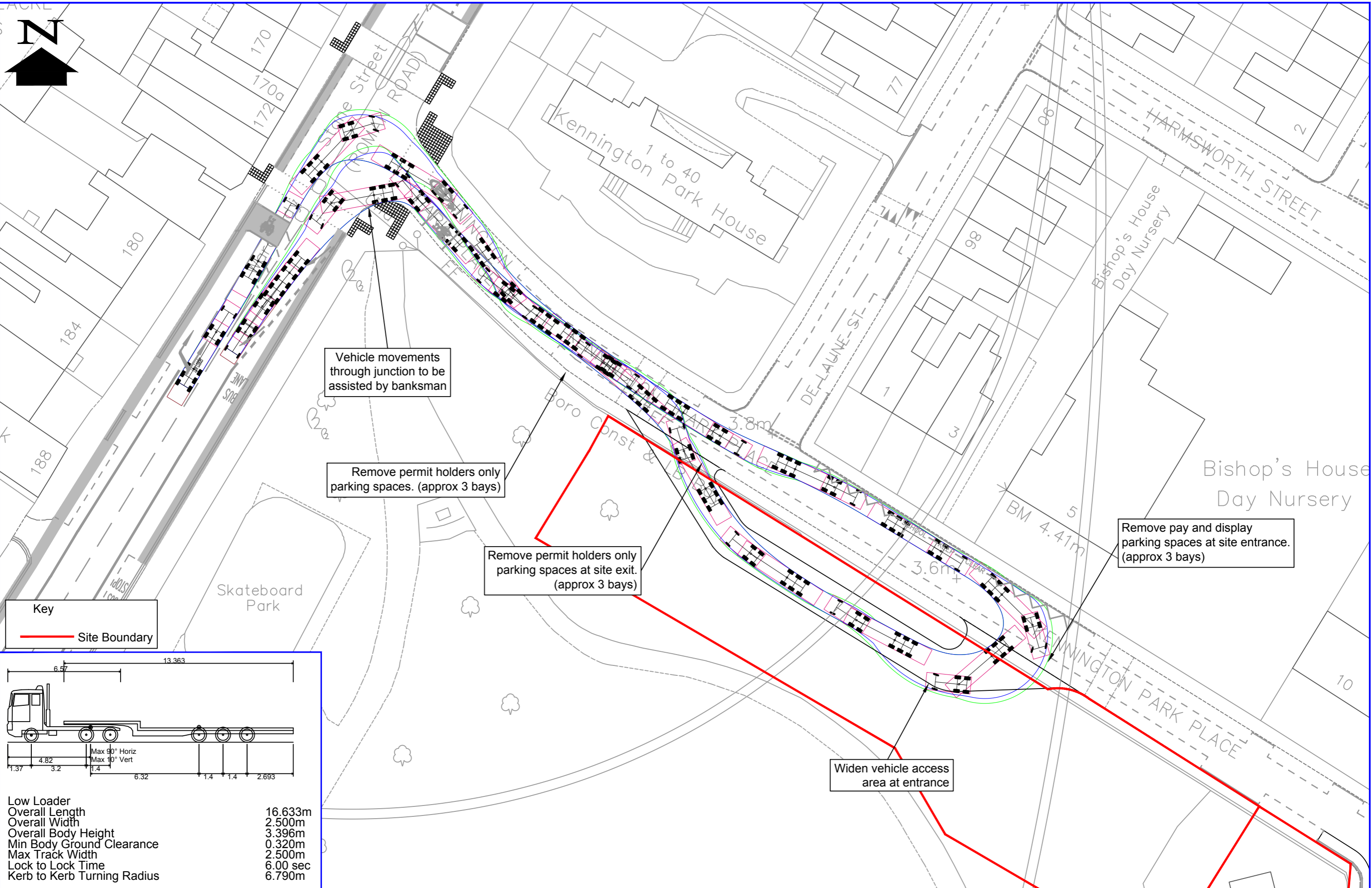


FTA Design HG Rigid Vehicle (1998)
 Overall Length 10.000m
 Overall Width 2.500m
 Overall Body Height 3.645m
 Min Body Ground Clearance 0.440m
 Track Width 2.470m
 Lock to Lock Time 3.00 sec
 Kerb to Kerb Turning Radius 11.000m

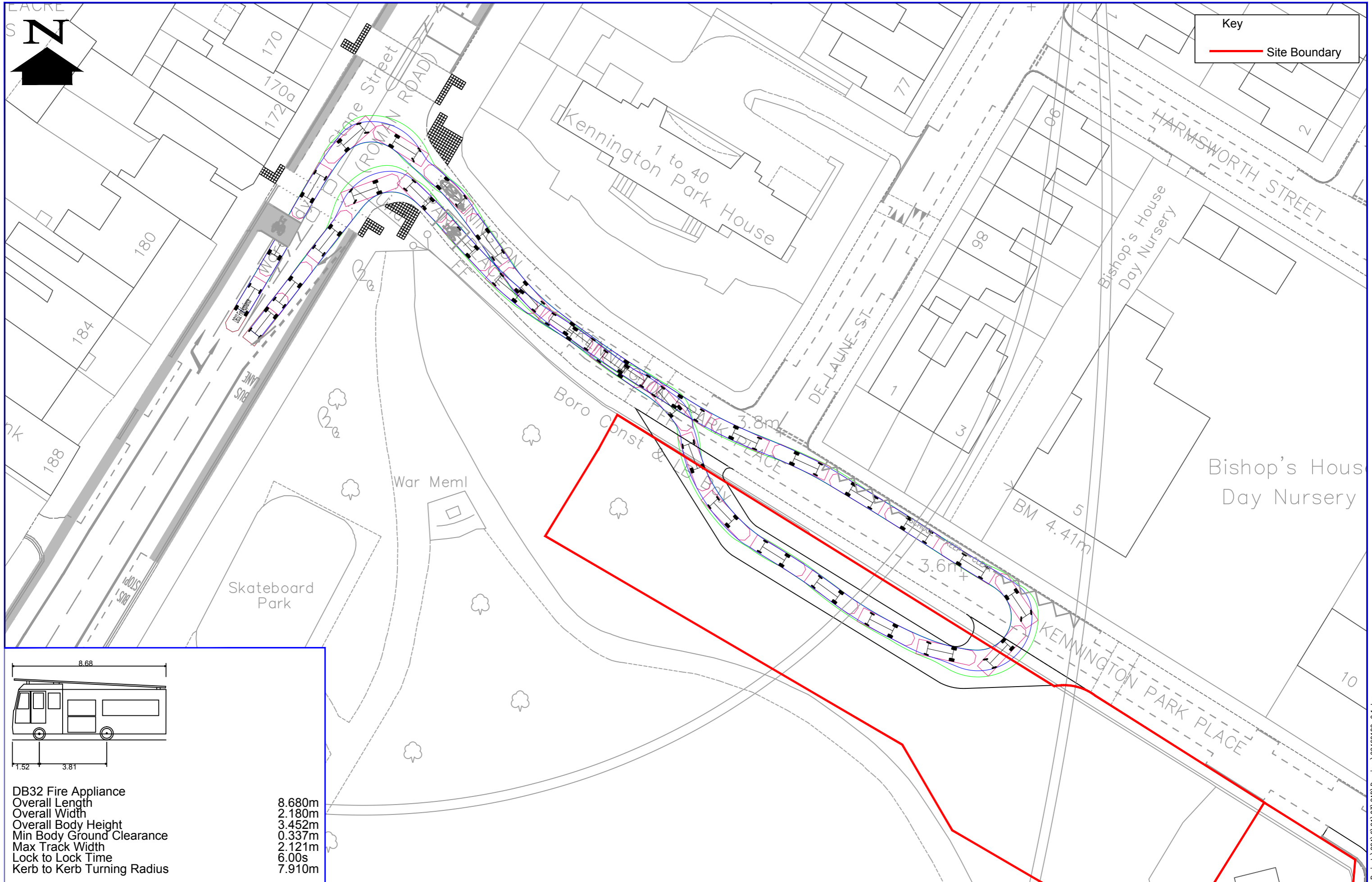
CAD REFERENCE: F:\Projects\224\6\91\03\CAD\Drawings\22469102-2.1.dwg



Large Tipper
 Overall Length 10.201m
 Overall Width 2.500m
 Overall Body Height 2.893m
 Min Body Ground Clearance 0.343m
 Max Track Width 2.500m
 Lock to Lock Time 6.00 sec
 Kerb to Kerb Turning Radius 11.550m

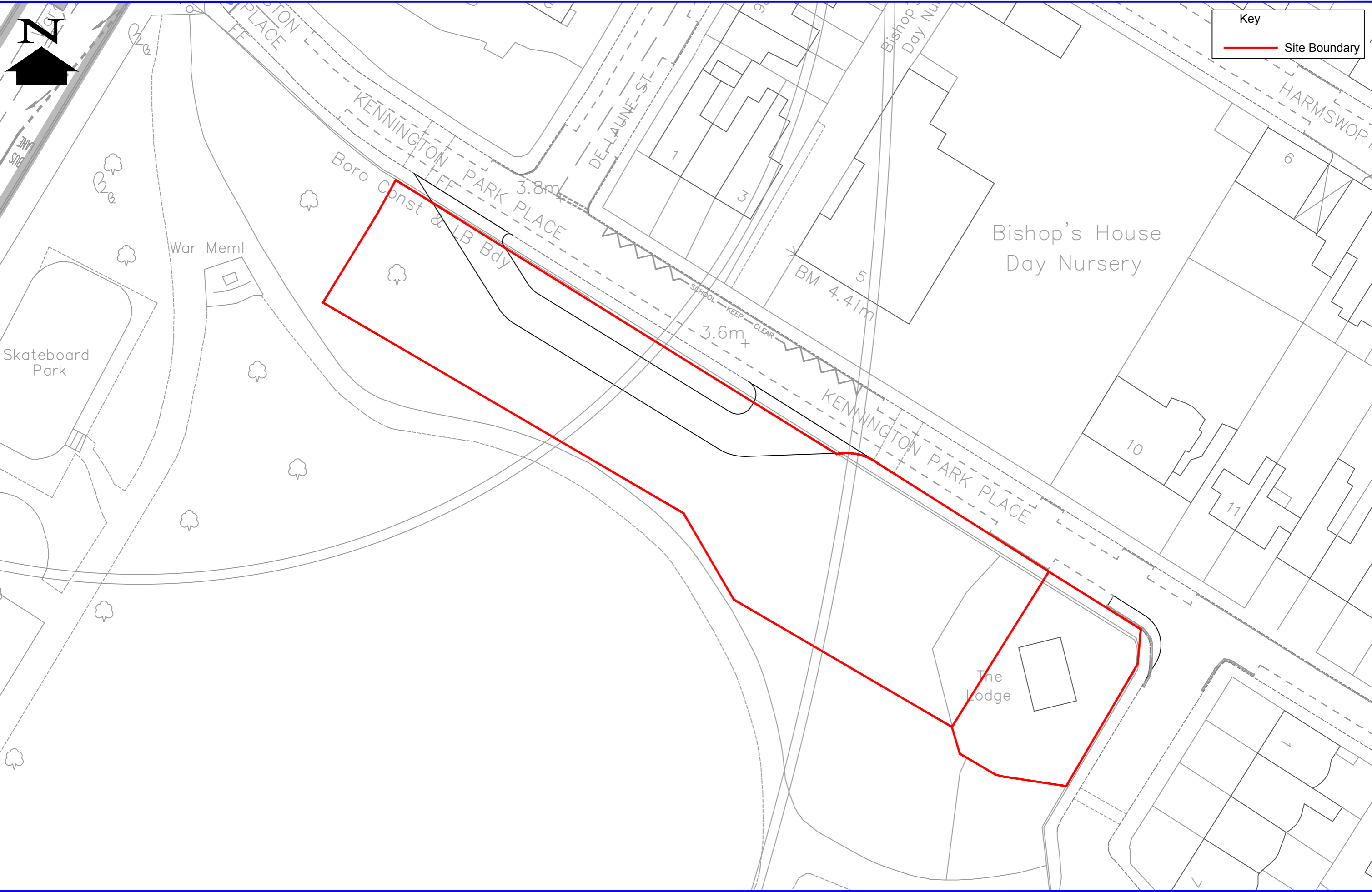


Northern Line Extension
 Kennington Park - Low Loader Track Analysis



DB32 Fire Appliance	
Overall Length	8.680m
Overall Width	2.180m
Overall Body Height	3.452m
Min Body Ground Clearance	0.337m
Max Track Width	2.121m
Lock to Lock Time	6.00s
Kerb to Kerb Turning Radius	7.910m

Northern Line Extension
 Kennington Park - Emergency Vehicle Track Analysis



Northern Line Extension
 Kennington Park - Site Boundary

steer davis gleave

Drawn: CJP	Date: 10/01/13	Scale: 1:500	Figure No: 4-7
---------------	-------------------	-----------------	-------------------

CAD REFERENCE: F:\Projects\224\6\91\03\CAD\Drawings\22469102-2.1.dwg

